

FAO World Reference Laboratory for Foot-and-Mouth Disease (WRLFMD)

Genotyping Report

FMDV serotype: O
Country: Turkiye
Year: 2024
Batch: WRLMEG/2024/000007
No. of sequences: 1
Report date: 9th May 2024
Report generated by: Nick Knowles
Report checked by: Don King

This report is prepared on behalf of the Şap Enstitüsü (Ankara, Turkiye) and covers a VP1 sequence submitted to the WRLFMD on 09 May 2024.



Copyright © 2024 The Pirbright Institute, Ash Road, Pirbright, Woking GU24 0NF, United Kingdom.

www: <http://www.wrlfmd.org/>

email: reporting@pirbright.ac.uk

The contents of this report should not be reproduced without permission.

Virus sample name:	IRQ-TUR/24
Sender reference:	O/IRQ-TUR/24
Location of origin:	Mamras Border Patrol Cross border to Iraq; in Hakkari
Country of origin:	Turkiye
Date of collection:	02/04/2024
Host species:	cattle
Serotype:	O
Topotype:	ME-SA
Lineage:	PanAsia-2
Sublineage:	ANT-10
Sequence length:	633
Ambiguities:	0
Material submitted for sequencing:	n/a
Harvest date of material:	n/a
Primers:	n/a
Received for sequencing:	n/a
Created:	09/05/2024
Last updated:	09/05/2024

VIBASys IDs: sample 55149, genome 55150, sequence viba_55151, sequencing info 55152

Most Closely Related Sequences

sequence	virus name	Host	% Id.	# Ambig.	serotype	topotype	lineage	sublineage
viba_54153	PAK/2/2023	cattle	98.1	0	O	ME-SA	PanAsia-2	ANT-10
viba_54149	PAK/1/2023	cattle	97.8	0	O	ME-SA	PanAsia-2	ANT-10
viba_50385	PAK/40/2021	cattle	95.9	0	O	ME-SA	PanAsia-2	ANT-10
viba_50357	PAK/16/2021	cattle	95.9	0	O	ME-SA	PanAsia-2	ANT-10
viba_54121	PAK/5/2022	water buffalo	95.7	0	O	ME-SA	PanAsia-2	ANT-10
viba_50341	PAK/12/2021	water buffalo	95.7	0	O	ME-SA	PanAsia-2	ANT-10
viba_50317	PAK/3/2021	cattle	95.7	0	O	ME-SA	PanAsia-2	ANT-10
viba_50325	PAK/6/2021	cattle	95.7	0	O	ME-SA	PanAsia-2	ANT-10
viba_50950	UAE/1/2021	Arabian oryx	95.7	0	O	ME-SA	PanAsia-2	ANT-10
viba_50954	UAE/2/2021	Arabian oryx	95.7	0	O	ME-SA	PanAsia-2	ANT-10

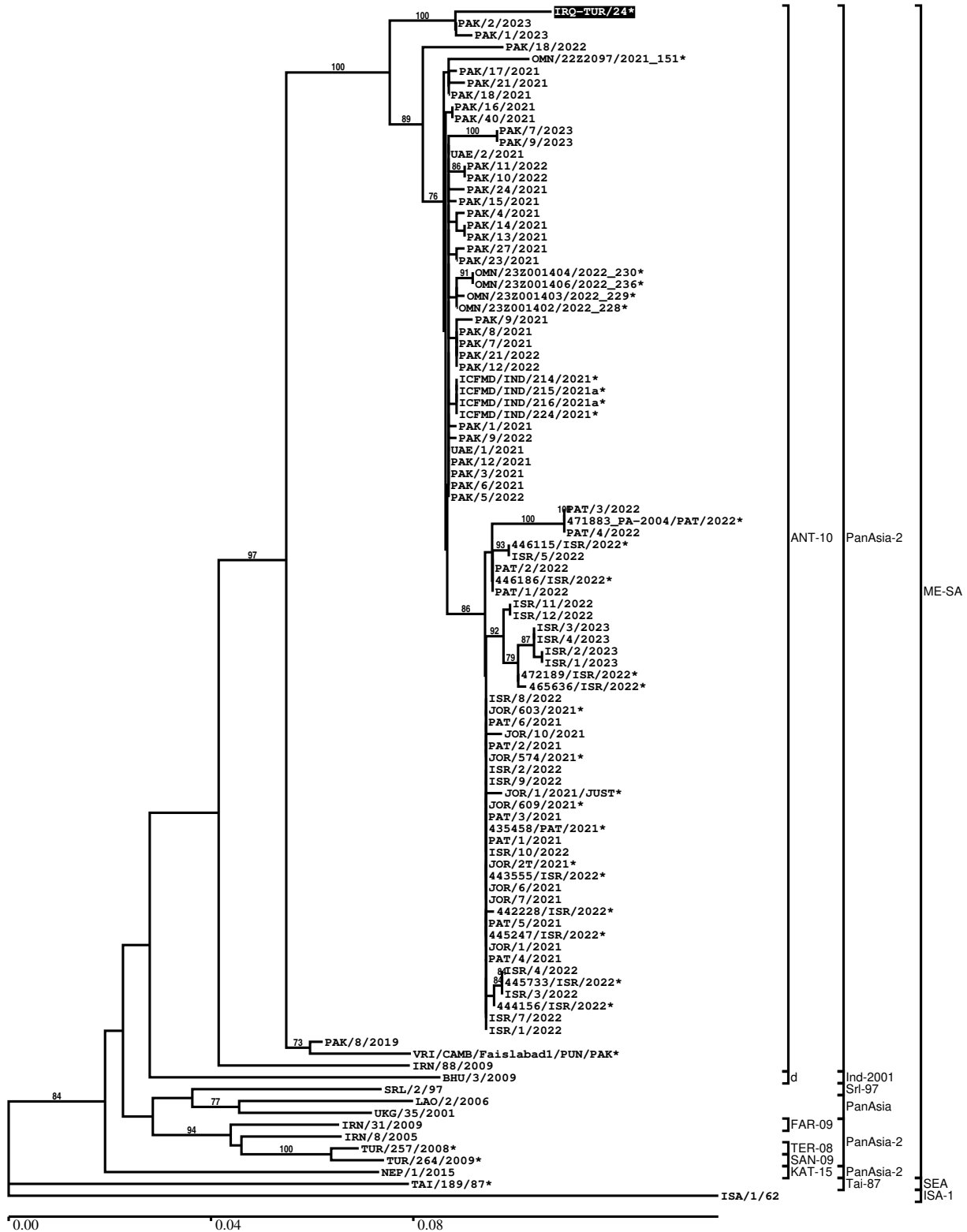
Most Closely Related Prototype Sequences

see <http://www.wrlfmd.org/fmdv-genome/fmd-prototype-strains>

sequence	virus name	Host	% Id.	# Ambig.	serotype	topotype	lineage	sublineage
viba_719	IRN/88/2009		89.5	0	O	ME-SA	PanAsia-2	ANT-10
viba_27877	SRL/2/97	bovine	88.8	0	O	ME-SA	Srl-97	
viba_650	IRN/8/2005	ovine	88.2	0	O	ME-SA	PanAsia-2	
viba_766	IRN/31/2009	cattle	88.0	0	O	ME-SA	PanAsia-2	FAR-09
viba_285	UKG/35/2001	porcine	88.0	0	O	ME-SA	PanAsia	
viba_850	NEP/1/2015	cattle	87.7	1	O	ME-SA	PanAsia-2	KAT-15
viba_9021	LAO/2/2006	cattle	87.5	0	O	ME-SA	PanAsia	
viba_293	BHU/3/2009	cattle	87.5	0	O	ME-SA	Ind-2001	d
viba_491	TUR/257/2008		87.4	0	O	ME-SA	PanAsia-2	TER-08
viba_505	TUR/264/2009		87.4	0	O	ME-SA	PanAsia-2	SAN-09

Report on FMDV O in Turkiye in 2024

Batch: WRLMEG/2024/000007



*, not a WRLFMD Reference Number

Analysis Parameters

VP1 subsequence extractor:	vp1_O
Query sequence set:	WRLMEG/2024/000007-Turkiye-O (1 sequences)
Sequence database set:	allseqs_O (6210 sequences)
Prototype sequence set:	!prototypes_O (58 sequences)
Number of related sequences reported:	10
Minimal VP1 subsequence match length	600
Sequence alignment method:	muscle (default parameters)
Sequence alignment length:	636
Phylogeny reconstruction method:	fdnadist, fneighbor
Number of bootstrap samples:	1000
Random seed for bootstrapping:	1
Displaying bootstrap values above:	70.0%
Number of sequences in tree capped at:	100
Number of prototype sequences in tree:	10
VIBASys version:	reflabs-1.1.2

Sequences in the Phylogenetic Tree

All sequences in the tree are in taxonomic group FMDV/O

label	accession	host(s)	lab	country	taxonomic information
IRQ-TUR/24*	n/a	cattle	FMDI	Turkiye	ME-SA/PanAsia-2/ANT-10
PAK/2/2023	n/a	cattle	WRLFMD	Pakistan	ME-SA/PanAsia-2/ANT-10
PAK/1/2023	n/a	cattle	WRLFMD	Pakistan	ME-SA/PanAsia-2/ANT-10
PAK/18/2022	n/a	water buffalo	WRLFMD	Pakistan	ME-SA/PanAsia-2/ANT-10
OMN/22Z2097/2021_151*	n/a	cattle	ANSES	Oman	ME-SA/PanAsia-2/ANT-10
PAK/17/2021	n/a	cattle	WRLFMD	Pakistan	ME-SA/PanAsia-2/ANT-10
PAK/21/2021	n/a	cattle	WRLFMD	Pakistan	ME-SA/PanAsia-2/ANT-10
PAK/18/2021	n/a	cattle	WRLFMD	Pakistan	ME-SA/PanAsia-2/ANT-10
PAK/16/2021	n/a	cattle	WRLFMD	Pakistan	ME-SA/PanAsia-2/ANT-10
PAK/40/2021	n/a	cattle	WRLFMD	Pakistan	ME-SA/PanAsia-2/ANT-10
PAK/7/2023	n/a	cattle	WRLFMD	Pakistan	ME-SA/PanAsia-2/ANT-10
PAK/9/2023	n/a	cattle	WRLFMD	Pakistan	ME-SA/PanAsia-2/ANT-10
UAE/2/2021	n/a	Arabian oryx	WRLFMD	United Arab Emirates	ME-SA/PanAsia-2/ANT-10
PAK/11/2022	n/a	cattle	WRLFMD	Pakistan	ME-SA/PanAsia-2/ANT-10
PAK/10/2022	n/a	cattle	WRLFMD	Pakistan	ME-SA/PanAsia-2/ANT-10
PAK/24/2021	n/a	cattle	WRLFMD	Pakistan	ME-SA/PanAsia-2/ANT-10
PAK/15/2021	n/a	cattle	WRLFMD	Pakistan	ME-SA/PanAsia-2/ANT-10
PAK/4/2021	n/a	water buffalo	WRLFMD	Pakistan	ME-SA/PanAsia-2/ANT-10
PAK/14/2021	n/a	cattle	WRLFMD	Pakistan	ME-SA/PanAsia-2/ANT-10
PAK/13/2021	n/a	cattle	WRLFMD	Pakistan	ME-SA/PanAsia-2/ANT-10
PAK/27/2021	n/a	cattle	WRLFMD	Pakistan	ME-SA/PanAsia-2/ANT-10
PAK/23/2021	n/a	cattle	WRLFMD	Pakistan	ME-SA/PanAsia-2/ANT-10
OMN/23Z001404/2022_230*	n/a	cattle	ANSES	Oman	ME-SA/PanAsia-2/ANT-10
OMN/23Z001406/2022_236*	n/a	cattle	ANSES	Oman	ME-SA/PanAsia-2/ANT-10
OMN/23Z001403/2022_229*	n/a	cattle	ANSES	Oman	ME-SA/PanAsia-2/ANT-10
OMN/23Z001402/2022_228*	n/a	cattle	ANSES	Oman	ME-SA/PanAsia-2/ANT-10
PAK/9/2021	n/a	cattle	WRLFMD	Pakistan	ME-SA/PanAsia-2/ANT-10
PAK/8/2021	n/a	cattle	WRLFMD	Pakistan	ME-SA/PanAsia-2/ANT-10
PAK/7/2021	n/a	cattle	WRLFMD	Pakistan	ME-SA/PanAsia-2/ANT-10
PAK/21/2022	n/a	water buffalo	WRLFMD	Pakistan	ME-SA/PanAsia-2/ANT-10
PAK/12/2022	n/a	cattle	WRLFMD	Pakistan	ME-SA/PanAsia-2/ANT-10
ICFMD/IND/214/2021*	OQ847002	cattle	ICAR-DFMD	India	ME-SA/PanAsia-2/ANT-10
ICFMD/IND/215/2021a*	OQ847008	cattle	ICAR-DFMD	India	ME-SA/PanAsia-2/ANT-10

continued on next page

label	accession	host(s)	lab	country	taxonomic information
ICFMD/IND/216/2021a*	OQ847009	cattle	ICAR-DFMD	India	ME-SA/PanAsia-2/ANT-10
ICFMD/IND/224/2021*	OQ847003	cattle	ICAR-DFMD	India	ME-SA/PanAsia-2/ANT-10
PAK/1/2021	n/a	cattle	WRLFMD	Pakistan	ME-SA/PanAsia-2/ANT-10
PAK/9/2022	n/a	cattle	WRLFMD	Pakistan	ME-SA/PanAsia-2/ANT-10
UAE/1/2021	n/a	Arabian oryx	WRLFMD	United Arab Emirates	ME-SA/PanAsia-2/ANT-10
PAK/12/2021	n/a	water buffalo	WRLFMD	Pakistan	ME-SA/PanAsia-2/ANT-10
PAK/3/2021	n/a	cattle	WRLFMD	Pakistan	ME-SA/PanAsia-2/ANT-10
PAK/6/2021	n/a	cattle	WRLFMD	Pakistan	ME-SA/PanAsia-2/ANT-10
PAK/5/2022	n/a	water buffalo	WRLFMD	Pakistan	ME-SA/PanAsia-2/ANT-10
PAT/3/2022	n/a	sheep	WRLFMD	Palestinian AT	ME-SA/PanAsia-2/ANT-10
471883_PA-2004/PAT/2022*	n/a	sheep	KVI	Palestinian AT	ME-SA/PanAsia-2/ANT-10
PAT/4/2022	n/a	sheep	WRLFMD	Palestinian AT	ME-SA/PanAsia-2/ANT-10
446115/ISR/2022*	n/a	cattle	KVI	Israel	ME-SA/PanAsia-2/ANT-10
ISR/5/2022	n/a	cattle	WRLFMD	Israel	ME-SA/PanAsia-2/ANT-10
PAT/2/2022	n/a	sheep	WRLFMD	Palestinian AT	ME-SA/PanAsia-2/ANT-10
446186/ISR/2022*	n/a	cattle	KVI	Israel	ME-SA/PanAsia-2/ANT-10
PAT/1/2022	n/a	sheep	WRLFMD	Palestinian AT	ME-SA/PanAsia-2/ANT-10
ISR/11/2022	n/a	cattle	WRLFMD	Israel	ME-SA/PanAsia-2/ANT-10
ISR/12/2022	n/a	cattle	WRLFMD	Israel	ME-SA/PanAsia-2/ANT-10
ISR/3/2023	n/a	cattle	WRLFMD	Israel	ME-SA/PanAsia-2/ANT-10
ISR/4/2023	n/a	cattle	WRLFMD	Israel	ME-SA/PanAsia-2/ANT-10
ISR/2/2023	n/a	cattle	WRLFMD	Israel	ME-SA/PanAsia-2/ANT-10
ISR/1/2023	n/a	cattle	WRLFMD	Israel	ME-SA/PanAsia-2/ANT-10
472189/ISR/2022*	n/a	cattle	KVI	Israel	ME-SA/PanAsia-2/ANT-10
465636/ISR/2022*	n/a	cattle	KVI	Israel	ME-SA/PanAsia-2/ANT-10
ISR/8/2022	n/a	cattle	WRLFMD	Israel	ME-SA/PanAsia-2/ANT-10
JOR/603/2021*	n/a	cattle	JUST	Jordan	ME-SA/PanAsia-2/ANT-10
PAT/6/2021	n/a	goat	WRLFMD	Palestinian AT	ME-SA/PanAsia-2/ANT-10
JOR/10/2021	n/a	sheep	WRLFMD	Jordan	ME-SA/PanAsia-2/ANT-10
PAT/2/2021	n/a	cattle	WRLFMD	Palestinian AT	ME-SA/PanAsia-2/ANT-10
JOR/574/2021*	n/a	cattle	JUST	Jordan	ME-SA/PanAsia-2/ANT-10
ISR/2/2022	n/a	cattle	WRLFMD	Israel	ME-SA/PanAsia-2/ANT-10
ISR/9/2022	n/a	cattle	WRLFMD	Israel	ME-SA/PanAsia-2/ANT-10
JOR/1/2021/JUST*	n/a	cattle	JUST	Jordan	ME-SA/PanAsia-2/ANT-10
JOR/609/2021*	n/a	cattle	JUST	Jordan	ME-SA/PanAsia-2/ANT-10
PAT/3/2021	n/a	sheep	WRLFMD	Palestinian AT	ME-SA/PanAsia-2/ANT-10
435458/PAT/2021*	n/a	sheep	KVI	Palestinian AT	ME-SA/PanAsia-2/ANT-10
PAT/1/2021	n/a	cattle	WRLFMD	Palestinian AT	ME-SA/PanAsia-2/ANT-10
ISR/10/2022	n/a	cattle	WRLFMD	Israel	ME-SA/PanAsia-2/ANT-10
JOR/27/2021*	n/a	sheep	JUST	Jordan	ME-SA/PanAsia-2/ANT-10
443555/ISR/2022*	n/a	sheep	KVI	Israel	ME-SA/PanAsia-2/ANT-10
JOR/6/2021	n/a	cattle	WRLFMD	Jordan	ME-SA/PanAsia-2/ANT-10
JOR/7/2021	n/a	cattle	WRLFMD	Jordan	ME-SA/PanAsia-2/ANT-10
442228/ISR/2022*	n/a	cattle	KVI	Israel	ME-SA/PanAsia-2/ANT-10
PAT/5/2021	n/a	goat	WRLFMD	Palestinian AT	ME-SA/PanAsia-2/ANT-10
445247/ISR/2022*	n/a	cattle	KVI	Israel	ME-SA/PanAsia-2/ANT-10
JOR/1/2021	n/a	cattle	WRLFMD	Jordan	ME-SA/PanAsia-2/ANT-10
PAT/4/2021	n/a	sheep	WRLFMD	Palestinian AT	ME-SA/PanAsia-2/ANT-10
ISR/4/2022	n/a	cattle	WRLFMD	Israel	ME-SA/PanAsia-2/ANT-10
445733/ISR/2022*	n/a	cattle	KVI	Israel	ME-SA/PanAsia-2/ANT-10
ISR/3/2022	n/a	cattle	WRLFMD	Israel	ME-SA/PanAsia-2/ANT-10
444156/ISR/2022*	n/a	cattle	KVI	Israel	ME-SA/PanAsia-2/ANT-10
ISR/7/2022	n/a	cattle	WRLFMD	Israel	ME-SA/PanAsia-2/ANT-10

continued on next page

label	accession	host(s)	lab	country	taxonomic information
ISR/1/2022	n/a	cattle	WRLFMD	Israel	ME-SA/PanAsia-2/ANT-10
PAK/8/2019	n/a	cattle	WRLFMD	Pakistan	ME-SA/PanAsia-2/ANT-10
VRI/CAMB/Faislabad1/PUN/PAK*	MK292142	cattle	VRI-CAMB	Pakistan	ME-SA/PanAsia-2/ANT-10
IRN/88/2009	KY091282	n/a	WRLFMD	Iran	ME-SA/PanAsia-2/ANT-10
BHU/3/2009	KM921814	cattle	WRLFMD	Bhutan	ME-SA/Ind-2001/d
SRL/2/97	AJ303531	bovine	WRLFMD	Sri Lanka	ME-SA/Sri-97
LAO/2/2006	EU667451	cattle	WRLFMD	Laos	ME-SA/PanAsia
UKG/35/2001	AJ539141	porcine	PIADC	United Kingdom	ME-SA/PanAsia
IRN/31/2009	KY091284	cattle	WRLFMD	Iran	ME-SA/PanAsia-2/FAR-09
IRN/8/2005	KY091281	ovine	WRLFMD	Iran	ME-SA/PanAsia-2
TUR/257/2008*	n/a	n/a	FMDI-Ankara	Turkiye	ME-SA/PanAsia-2/TER-08
TUR/264/2009*	n/a	n/a	FMDI-Ankara	Turkiye	ME-SA/PanAsia-2/SAN-09
NEP/1/2015	MN276045	cattle	WRLFMD	Nepal	ME-SA/PanAsia-2/KAT-15
TAI/189/87*	KY091288	bovine	TRRL	Thailand	SEA/Tai-87
ISA/1/62	AJ303500	n/a	WRLFMD	Indonesia	ISA-1

*, not a WRLFMD Reference Number

n/a, not available