

FAO World Reference Laboratory for Foot-and-Mouth Disease (WRLFMD)

Genotyping Report v.2

FMDV serotype: O
Country: Indonesia
Year: 2023-2024
Batch: WRLMEG/2024/000003
No. of sequences: 9
Report date: 15th March 2024
Report generated by: Nick Knowles
Report checked by: Don King



Copyright © 2024 The Pirbright Institute, Ash Road, Pirbright, Woking GU24 0NF, United Kingdom.

www: <http://www.wrlfmd.org/>

email: reporting@pirbright.ac.uk

The contents of this report should not be reproduced without permission.

| | |
|---|----------------------------|
| Virus sample name: | ISA/Nganjuk/PVT/Pls-5/2023 |
| Sender reference: | ISA/Nganjuk/PVT/Pls-5/2023 |
| Location of origin: | Nganjuk, Jawa Timur |
| Country of origin: | Indonesia |
| Date of collection: | 24/01/2023 |
| Host species: | cattle |
| Serotype: | O |
| Topotype: | ME-SA |
| Lineage: | Ind-2001 |
| Sublineage: | e |
| Sequence length: | 633 |
| Ambiguities: | 0 |
| Material submitted for sequencing: | n/a |
| Harvest date of material: | n/a |
| Primers: | n/a |
| Received for sequencing: | n/a |
| Created: | 11/03/2024 |
| Last updated: | 11/03/2024 |
| VIBASys IDs: sample 55029, genome 55030, sequence viba_55031, sequencing info 55032 | |

Most Closely Related Sequences

| sequence | virus name | Host | % Id. | # Ambig. | serotype | topotype | lineage | sublineage |
|------------|--------------------------------|--------|-------|----------|----------|----------|----------|------------|
| viba_55047 | ISA/Gresik/PVT/Sw-11/2023 | cattle | 99.8 | 0 | O | ME-SA | Ind-2001 | e |
| viba_55039 | ISA/Bojonegoro/PVT/Pls-14/2023 | cattle | 99.8 | 0 | O | ME-SA | Ind-2001 | e |
| viba_55035 | ISA/Nganjuk/PVT/Sw-1/2023 | cattle | 99.7 | 0 | O | ME-SA | Ind-2001 | e |
| viba_55043 | ISA/Bojonegoro/PVT/Pls-2/2023 | cattle | 99.7 | 0 | O | ME-SA | Ind-2001 | e |
| viba_50631 | PVT-S2AN/ISA/2022 | cattle | 98.6 | 0 | O | ME-SA | Ind-2001 | e |
| viba_51223 | ISA/Probolinggo/PVT/2022 | cattle | 98.6 | 0 | O | ME-SA | Ind-2001 | e |
| viba_51207 | ISA/Lamongan/PVT-VL6/2022 | cattle | 98.6 | 0 | O | ME-SA | Ind-2001 | e |
| viba_51024 | ISA/6/2022 | cattle | 98.6 | 0 | O | ME-SA | Ind-2001 | e |
| viba_51271 | ISA/Gresik/PVT-KBMS/2022 | cattle | 98.6 | 0 | O | ME-SA | Ind-2001 | e |
| viba_51235 | ISA/Pasuruan/A04222583/2022 | cattle | 98.6 | 0 | O | ME-SA | Ind-2001 | e |

Most Closely Related Prototype Sequences

see <http://www.wrlfmd.org/fmdv-genome/fmd-prototype-strains>

| sequence | virus name | Host | % Id. | # Ambig. | serotype | topotype | lineage | sublineage |
|------------|-------------|---------|-------|----------|----------|----------|-----------|------------|
| viba_30238 | MUR/19/2016 | cattle | 95.4 | 0 | O | ME-SA | Ind-2001 | e |
| viba_293 | BHU/3/2009 | cattle | 92.4 | 0 | O | ME-SA | Ind-2001 | d |
| viba_541 | OMN/7/2001 | bovine | 91.3 | 0 | O | ME-SA | Ind-2001 | b |
| viba_705 | KUW/3/97 | bovine | 91.3 | 0 | O | ME-SA | Ind-2001 | a |
| viba_397 | UAE/4/2008 | gazelle | 89.6 | 0 | O | ME-SA | Ind-2001 | c |
| viba_27877 | SRL/2/97 | bovine | 89.3 | 0 | O | ME-SA | Srl-97 | |
| viba_285 | UKG/35/2001 | porcine | 88.3 | 0 | O | ME-SA | PanAsia | |
| viba_9021 | LAO/2/2006 | cattle | 88.0 | 0 | O | ME-SA | PanAsia | |
| viba_38646 | SYR/18/62 | | 87.7 | 0 | O | WCSA-1 | Syr-62 | |
| viba_650 | IRN/8/2005 | ovine | 87.7 | 0 | O | ME-SA | PanAsia-2 | |

| | |
|---|---------------------------|
| Virus sample name: | ISA/Nganjuk/PVT/Sw-1/2023 |
| Sender reference: | ISA/Nganjuk/PVT/Sw-1/2023 |
| Location of origin: | Nganjuk, Jawa Timur |
| Country of origin: | Indonesia |
| Date of collection: | 24/01/2023 |
| Host species: | cattle |
| Serotype: | O |
| Topotype: | ME-SA |
| Lineage: | Ind-2001 |
| Sublineage: | e |
| Sequence length: | 633 |
| Ambiguities: | 0 |
| Material submitted for sequencing: | n/a |
| Harvest date of material: | n/a |
| Primers: | n/a |
| Received for sequencing: | n/a |
| Created: | 11/03/2024 |
| Last updated: | 11/03/2024 |
| VIBASys IDs: sample 55033, genome 55034, sequence viba_55035, sequencing info 55036 | |

Most Closely Related Sequences

| sequence | virus name | Host | % Id. | # Ambig. | serotype | topotype | lineage | sublineage |
|------------|--------------------------------|--------|-------|----------|----------|----------|----------|------------|
| viba_55047 | ISA/Gresik/PVT/Sw-11/2023 | cattle | 99.8 | 0 | O | ME-SA | Ind-2001 | e |
| viba_55039 | ISA/Bojonegoro/PVT/Pls-14/2023 | cattle | 99.8 | 0 | O | ME-SA | Ind-2001 | e |
| viba_55043 | ISA/Bojonegoro/PVT/Pls-2/2023 | cattle | 99.7 | 0 | O | ME-SA | Ind-2001 | e |
| viba_55031 | ISA/Nganjuk/PVT/Pls-5/2023 | cattle | 99.7 | 0 | O | ME-SA | Ind-2001 | e |
| viba_50631 | PVT-S2AN/ISA/2022 | cattle | 98.6 | 0 | O | ME-SA | Ind-2001 | e |
| viba_51223 | ISA/Probolinggo/PVT/2022 | cattle | 98.6 | 0 | O | ME-SA | Ind-2001 | e |
| viba_51207 | ISA/Lamongan/PVT-VL6/2022 | cattle | 98.6 | 0 | O | ME-SA | Ind-2001 | e |
| viba_51024 | ISA/6/2022 | cattle | 98.6 | 0 | O | ME-SA | Ind-2001 | e |
| viba_51271 | ISA/Gresik/PVT-KBMS/2022 | cattle | 98.6 | 0 | O | ME-SA | Ind-2001 | e |
| viba_51235 | ISA/Pasuruan/A04222583/2022 | cattle | 98.6 | 0 | O | ME-SA | Ind-2001 | e |

Most Closely Related Prototype Sequences

see <http://www.wrlfmd.org/fmdv-genome/fmd-prototype-strains>

| sequence | virus name | Host | % Id. | # Ambig. | serotype | topotype | lineage | sublineage |
|------------|-------------|---------|-------|----------|----------|----------|-----------|------------|
| viba_30238 | MUR/19/2016 | cattle | 95.4 | 0 | O | ME-SA | Ind-2001 | e |
| viba_293 | BHU/3/2009 | cattle | 92.4 | 0 | O | ME-SA | Ind-2001 | d |
| viba_541 | OMN/7/2001 | bovine | 91.3 | 0 | O | ME-SA | Ind-2001 | b |
| viba_705 | KUW/3/97 | bovine | 91.3 | 0 | O | ME-SA | Ind-2001 | a |
| viba_397 | UAE/4/2008 | gazelle | 89.7 | 0 | O | ME-SA | Ind-2001 | c |
| viba_27877 | SRL/2/97 | bovine | 89.3 | 0 | O | ME-SA | Srl-97 | |
| viba_285 | UKG/35/2001 | porcine | 88.3 | 0 | O | ME-SA | PanAsia | |
| viba_9021 | LAO/2/2006 | cattle | 88.0 | 0 | O | ME-SA | PanAsia | |
| viba_38646 | SYR/18/62 | | 87.9 | 0 | O | WCSA-1 | Syr-62 | |
| viba_650 | IRN/8/2005 | ovine | 87.7 | 0 | O | ME-SA | PanAsia-2 | |

| | |
|---|--------------------------------|
| Virus sample name: | ISA/Bojonegoro/PVT/Pls-14/2023 |
| Sender reference: | ISA/Bojonegoro/PVT/Pls-14/2023 |
| Location of origin: | Bojonegoro, Jawa Timur |
| Country of origin: | Indonesia |
| Date of collection: | 26/01/2023 |
| Host species: | cattle |
| Serotype: | O |
| Topotype: | ME-SA |
| Lineage: | Ind-2001 |
| Sublineage: | e |
| Sequence length: | 633 |
| Ambiguities: | 0 |
| Material submitted for sequencing: | n/a |
| Harvest date of material: | n/a |
| Primers: | n/a |
| Received for sequencing: | n/a |
| Created: | 11/03/2024 |
| Last updated: | 11/03/2024 |
| VIBASys IDs: sample 55037, genome 55038, sequence viba_55039, sequencing info 55040 | |

Most Closely Related Sequences

| sequence | virus name | Host | % Id. | # Ambig. | serotype | topotype | lineage | sublineage |
|------------|-------------------------------|--------|-------|----------|----------|----------|----------|------------|
| viba_55047 | ISA/Gresik/PVT/Sw-11/2023 | cattle | 100.0 | 0 | O | ME-SA | Ind-2001 | e |
| viba_55035 | ISA/Nganjuk/PVT/Sw-1/2023 | cattle | 99.8 | 0 | O | ME-SA | Ind-2001 | e |
| viba_55043 | ISA/Bojonegoro/PVT/Pls-2/2023 | cattle | 99.8 | 0 | O | ME-SA | Ind-2001 | e |
| viba_55031 | ISA/Nganjuk/PVT/Pls-5/2023 | cattle | 99.8 | 0 | O | ME-SA | Ind-2001 | e |
| viba_50631 | PVT-S2AN/ISA/2022 | cattle | 98.7 | 0 | O | ME-SA | Ind-2001 | e |
| viba_51223 | ISA/Probolinggo/PVT/2022 | cattle | 98.7 | 0 | O | ME-SA | Ind-2001 | e |
| viba_51207 | ISA/Lamongan/PVT-VL6/2022 | cattle | 98.7 | 0 | O | ME-SA | Ind-2001 | e |
| viba_51024 | ISA/6/2022 | cattle | 98.7 | 0 | O | ME-SA | Ind-2001 | e |
| viba_51271 | ISA/Gresik/PVT-KBMS/2022 | cattle | 98.7 | 0 | O | ME-SA | Ind-2001 | e |
| viba_51235 | ISA/Pasuruan/A04222583/2022 | cattle | 98.7 | 0 | O | ME-SA | Ind-2001 | e |

Most Closely Related Prototype Sequences

see <http://www.wrlfmd.org/fmdv-genome/fmd-prototype-strains>

| sequence | virus name | Host | % Id. | # Ambig. | serotype | topotype | lineage | sublineage |
|------------|-------------|---------|-------|----------|----------|----------|-----------|------------|
| viba_30238 | MUR/19/2016 | cattle | 95.6 | 0 | O | ME-SA | Ind-2001 | e |
| viba_293 | BHU/3/2009 | cattle | 92.6 | 0 | O | ME-SA | Ind-2001 | d |
| viba_541 | OMN/7/2001 | bovine | 91.5 | 0 | O | ME-SA | Ind-2001 | b |
| viba_705 | KUW/3/97 | bovine | 91.5 | 0 | O | ME-SA | Ind-2001 | a |
| viba_397 | UAE/4/2008 | gazelle | 89.7 | 0 | O | ME-SA | Ind-2001 | c |
| viba_27877 | SRL/2/97 | bovine | 89.4 | 0 | O | ME-SA | Srl-97 | |
| viba_285 | UKG/35/2001 | porcine | 88.5 | 0 | O | ME-SA | PanAsia | |
| viba_9021 | LAO/2/2006 | cattle | 88.2 | 0 | O | ME-SA | PanAsia | |
| viba_38646 | SYR/18/62 | | 87.9 | 0 | O | WCSA-1 | Syr-62 | |
| viba_650 | IRN/8/2005 | ovine | 87.9 | 0 | O | ME-SA | PanAsia-2 | |

| | |
|---|-------------------------------|
| Virus sample name: | ISA/Bojonegoro/PVT/Pls-2/2023 |
| Sender reference: | ISA/Bojonegoro/PVT/Pls-2/2023 |
| Location of origin: | Bojonegoro, Jawa Timur |
| Country of origin: | Indonesia |
| Date of collection: | 26/01/2023 |
| Host species: | cattle |
| Serotype: | O |
| Topotype: | ME-SA |
| Lineage: | Ind-2001 |
| Sublineage: | e |
| Sequence length: | 633 |
| Ambiguities: | 0 |
| Material submitted for sequencing: | n/a |
| Harvest date of material: | n/a |
| Primers: | n/a |
| Received for sequencing: | n/a |
| Created: | 11/03/2024 |
| Last updated: | 11/03/2024 |
| VIBASys IDs: sample 55041, genome 55042, sequence viba_55043, sequencing info 55044 | |

Most Closely Related Sequences

| sequence | virus name | Host | % Id. | # Ambig. | serotype | topotype | lineage | sublineage |
|------------|--------------------------------|--------|-------|----------|----------|----------|----------|------------|
| viba_55047 | ISA/Gresik/PVT/Sw-11/2023 | cattle | 99.8 | 0 | O | ME-SA | Ind-2001 | e |
| viba_55039 | ISA/Bojonegoro/PVT/Pls-14/2023 | cattle | 99.8 | 0 | O | ME-SA | Ind-2001 | e |
| viba_55035 | ISA/Nganjuk/PVT/Sw-1/2023 | cattle | 99.7 | 0 | O | ME-SA | Ind-2001 | e |
| viba_55031 | ISA/Nganjuk/PVT/Pls-5/2023 | cattle | 99.7 | 0 | O | ME-SA | Ind-2001 | e |
| viba_50631 | PVT-S2AN/ISA/2022 | cattle | 98.9 | 0 | O | ME-SA | Ind-2001 | e |
| viba_51223 | ISA/Probolinggo/PVT/2022 | cattle | 98.9 | 0 | O | ME-SA | Ind-2001 | e |
| viba_51207 | ISA/Lamongan/PVT-VL6/2022 | cattle | 98.9 | 0 | O | ME-SA | Ind-2001 | e |
| viba_51024 | ISA/6/2022 | cattle | 98.9 | 0 | O | ME-SA | Ind-2001 | e |
| viba_51271 | ISA/Gresik/PVT-KBMS/2022 | cattle | 98.9 | 0 | O | ME-SA | Ind-2001 | e |
| viba_51235 | ISA/Pasuruan/A04222583/2022 | cattle | 98.9 | 0 | O | ME-SA | Ind-2001 | e |

Most Closely Related Prototype Sequences

see <http://www.wrlfmd.org/fmdv-genome/fmd-prototype-strains>

| sequence | virus name | Host | % Id. | # Ambig. | serotype | topotype | lineage | sublineage |
|------------|-------------|---------|-------|----------|----------|----------|-----------|------------|
| viba_30238 | MUR/19/2016 | cattle | 95.4 | 0 | O | ME-SA | Ind-2001 | e |
| viba_293 | BHU/3/2009 | cattle | 92.4 | 0 | O | ME-SA | Ind-2001 | d |
| viba_541 | OMN/7/2001 | bovine | 91.3 | 0 | O | ME-SA | Ind-2001 | b |
| viba_705 | KUW/3/97 | bovine | 91.3 | 0 | O | ME-SA | Ind-2001 | a |
| viba_397 | UAE/4/2008 | gazelle | 89.6 | 0 | O | ME-SA | Ind-2001 | c |
| viba_27877 | SRL/2/97 | bovine | 89.3 | 0 | O | ME-SA | Srl-97 | |
| viba_285 | UKG/35/2001 | porcine | 88.3 | 0 | O | ME-SA | PanAsia | |
| viba_9021 | LAO/2/2006 | cattle | 88.0 | 0 | O | ME-SA | PanAsia | |
| viba_650 | IRN/8/2005 | ovine | 88.0 | 0 | O | ME-SA | PanAsia-2 | |
| viba_666 | IRN/18/2010 | cattle | 88.0 | 0 | O | ME-SA | PanAsia-2 | BAL-09 |

| | |
|---|---------------------------|
| Virus sample name: | ISA/Gresik/PVT/Sw-11/2023 |
| Sender reference: | ISA/Gresik/PVT/Sw-11/2023 |
| Location of origin: | Gresik, Jawa Timur |
| Country of origin: | Indonesia |
| Date of collection: | 26/01/2023 |
| Host species: | cattle |
| Serotype: | O |
| Topotype: | ME-SA |
| Lineage: | Ind-2001 |
| Sublineage: | e |
| Sequence length: | 633 |
| Ambiguities: | 0 |
| Material submitted for sequencing: | n/a |
| Harvest date of material: | n/a |
| Primers: | n/a |
| Received for sequencing: | n/a |
| Created: | 11/03/2024 |
| Last updated: | 11/03/2024 |
| VIBASys IDs: sample 55045, genome 55046, sequence viba_55047, sequencing info 55048 | |

Most Closely Related Sequences

| sequence | virus name | Host | % Id. | # Ambig. | serotype | topotype | lineage | sublineage |
|------------|--------------------------------|--------|-------|----------|----------|----------|----------|------------|
| viba_55039 | ISA/Bojonegoro/PVT/Pls-14/2023 | cattle | 100.0 | 0 | O | ME-SA | Ind-2001 | e |
| viba_55035 | ISA/Nganjuk/PVT/Sw-1/2023 | cattle | 99.8 | 0 | O | ME-SA | Ind-2001 | e |
| viba_55043 | ISA/Bojonegoro/PVT/Pls-2/2023 | cattle | 99.8 | 0 | O | ME-SA | Ind-2001 | e |
| viba_55031 | ISA/Nganjuk/PVT/Pls-5/2023 | cattle | 99.8 | 0 | O | ME-SA | Ind-2001 | e |
| viba_50631 | PVT-S2AN/ISA/2022 | cattle | 98.7 | 0 | O | ME-SA | Ind-2001 | e |
| viba_51223 | ISA/Probolinggo/PVT/2022 | cattle | 98.7 | 0 | O | ME-SA | Ind-2001 | e |
| viba_51207 | ISA/Lamongan/PVT-VL6/2022 | cattle | 98.7 | 0 | O | ME-SA | Ind-2001 | e |
| viba_51024 | ISA/6/2022 | cattle | 98.7 | 0 | O | ME-SA | Ind-2001 | e |
| viba_51271 | ISA/Gresik/PVT-KBMS/2022 | cattle | 98.7 | 0 | O | ME-SA | Ind-2001 | e |
| viba_51235 | ISA/Pasuruan/A04222583/2022 | cattle | 98.7 | 0 | O | ME-SA | Ind-2001 | e |

Most Closely Related Prototype Sequences

see <http://www.wrlfmd.org/fmdv-genome/fmd-prototype-strains>

| sequence | virus name | Host | % Id. | # Ambig. | serotype | topotype | lineage | sublineage |
|------------|-------------|---------|-------|----------|----------|----------|-----------|------------|
| viba_30238 | MUR/19/2016 | cattle | 95.6 | 0 | O | ME-SA | Ind-2001 | e |
| viba_293 | BHU/3/2009 | cattle | 92.6 | 0 | O | ME-SA | Ind-2001 | d |
| viba_541 | OMN/7/2001 | bovine | 91.5 | 0 | O | ME-SA | Ind-2001 | b |
| viba_705 | KUW/3/97 | bovine | 91.5 | 0 | O | ME-SA | Ind-2001 | a |
| viba_397 | UAE/4/2008 | gazelle | 89.7 | 0 | O | ME-SA | Ind-2001 | c |
| viba_27877 | SRL/2/97 | bovine | 89.4 | 0 | O | ME-SA | Srl-97 | |
| viba_285 | UKG/35/2001 | porcine | 88.5 | 0 | O | ME-SA | PanAsia | |
| viba_9021 | LAO/2/2006 | cattle | 88.2 | 0 | O | ME-SA | PanAsia | |
| viba_38646 | SYR/18/62 | | 87.9 | 0 | O | WCSA-1 | Syr-62 | |
| viba_650 | IRN/8/2005 | ovine | 87.9 | 0 | O | ME-SA | PanAsia-2 | |

| | |
|------------------------------------|--------------------------|
| Virus sample name: | ISA/Kediri/PVT/Pr-6/2024 |
| Sender reference: | ISA/Kediri/PVT/Pr-6/2024 |
| Location of origin: | Kediri, Jawa Timur |
| Country of origin: | Indonesia |
| Date of collection: | 23/02/2024 |
| Host species: | cattle |
| Serotype: | O |
| Topotype: | ME-SA |
| Lineage: | Ind-2001 |
| Sublineage: | e |
| Sequence length: | 633 |
| Ambiguities: | 0 |
| Material submitted for sequencing: | n/a |
| Harvest date of material: | n/a |
| Primers: | n/a |
| Received for sequencing: | n/a |
| Created: | 11/03/2024 |
| Last updated: | 11/03/2024 |

VIBASys IDs: sample 55053, genome 55054, sequence viba_55055, sequencing info 55056

Most Closely Related Sequences

| sequence | virus name | Host | % Id. | # Ambig. | serotype | topotype | lineage | sublineage |
|------------|-----------------------------|--------|-------|----------|----------|----------|----------|------------|
| viba_55063 | ISA/Pasuruan/PVT/Pls-6/2024 | cattle | 99.8 | 0 | O | ME-SA | Ind-2001 | e |
| viba_55067 | ISA/Pasuruan/PVT/Sw-2/2024 | cattle | 99.7 | 0 | O | ME-SA | Ind-2001 | e |
| viba_55059 | ISA/Kediri/PVT/Sw-Kb/2024 | goat | 99.4 | 3 | O | ME-SA | Ind-2001 | e |
| viba_50631 | PVT-S2AN/ISA/2022 | cattle | 97.8 | 0 | O | ME-SA | Ind-2001 | e |
| viba_51223 | ISA/Probolinggo/PVT/2022 | cattle | 97.8 | 0 | O | ME-SA | Ind-2001 | e |
| viba_51207 | ISA/Lamongan/PVT-VL6/2022 | cattle | 97.8 | 0 | O | ME-SA | Ind-2001 | e |
| viba_51024 | ISA/6/2022 | cattle | 97.8 | 0 | O | ME-SA | Ind-2001 | e |
| viba_51271 | ISA/Gresik/PVT-KBMS/2022 | cattle | 97.8 | 0 | O | ME-SA | Ind-2001 | e |
| viba_51235 | ISA/Pasuruan/A04222583/2022 | cattle | 97.8 | 0 | O | ME-SA | Ind-2001 | e |
| viba_51291 | ISA/HSU/A0522099-5/2022 | goat | 97.8 | 0 | O | ME-SA | Ind-2001 | e |

Most Closely Related Prototype Sequences

see <http://www.wrlfmd.org/fmdv-genome/fmd-prototype-strains>

| sequence | virus name | Host | % Id. | # Ambig. | serotype | topotype | lineage | sublineage |
|------------|---------------|---------|-------|----------|----------|----------|-----------|------------|
| viba_30238 | MUR/19/2016 | cattle | 94.0 | 0 | O | ME-SA | Ind-2001 | e |
| viba_293 | BHU/3/2009 | cattle | 90.5 | 0 | O | ME-SA | Ind-2001 | d |
| viba_541 | OMN/7/2001 | bovine | 90.5 | 0 | O | ME-SA | Ind-2001 | b |
| viba_705 | KUW/3/97 | bovine | 89.9 | 0 | O | ME-SA | Ind-2001 | a |
| viba_397 | UAE/4/2008 | gazelle | 88.6 | 0 | O | ME-SA | Ind-2001 | c |
| viba_27877 | SRL/2/97 | bovine | 88.6 | 0 | O | ME-SA | Srl-97 | |
| viba_359 | Manisa/TUR/69 | | 88.2 | 0 | O | ME-SA | | |
| viba_9021 | LAO/2/2006 | cattle | 87.7 | 0 | O | ME-SA | PanAsia | |
| viba_285 | UKG/35/2001 | porcine | 87.6 | 0 | O | ME-SA | PanAsia | |
| viba_650 | IRN/8/2005 | ovine | 87.4 | 0 | O | ME-SA | PanAsia-2 | |

| | |
|---|---------------------------|
| Virus sample name: | ISA/Kediri/PVT/Sw-Kb/2024 |
| Sender reference: | ISA/Kediri/PVT/Sw-Kb/2024 |
| Location of origin: | Kediri, Jawa Timur |
| Country of origin: | Indonesia |
| Date of collection: | 23/02/2024 |
| Host species: | goat |
| Serotype: | O |
| Topotype: | ME-SA |
| Lineage: | Ind-2001 |
| Sublineage: | e |
| Sequence length: | 633 |
| Ambiguities: | 3 |
| Material submitted for sequencing: | n/a |
| Harvest date of material: | n/a |
| Primers: | n/a |
| Received for sequencing: | n/a |
| Created: | 11/03/2024 |
| Last updated: | 11/03/2024 |
| VIBASys IDs: sample 55057, genome 55058, sequence viba_55059, sequencing info 55060 | |

Most Closely Related Sequences

| sequence | virus name | Host | % Id. | # Ambig. | serotype | topotype | lineage | sublineage |
|------------|-----------------------------|--------|-------|----------|----------|----------|----------|------------|
| viba_55055 | ISA/Kediri/PVT/Pr-6/2024 | cattle | 99.4 | 0 | O | ME-SA | Ind-2001 | e |
| viba_55063 | ISA/Pasuruan/PVT/Pls-6/2024 | cattle | 99.4 | 0 | O | ME-SA | Ind-2001 | e |
| viba_55067 | ISA/Pasuruan/PVT/Sw-2/2024 | cattle | 99.2 | 0 | O | ME-SA | Ind-2001 | e |
| viba_50631 | PVT-S2AN/ISA/2022 | cattle | 97.3 | 0 | O | ME-SA | Ind-2001 | e |
| viba_51223 | ISA/Probolinggo/PVT/2022 | cattle | 97.3 | 0 | O | ME-SA | Ind-2001 | e |
| viba_51207 | ISA/Lamongan/PVT-VL6/2022 | cattle | 97.3 | 0 | O | ME-SA | Ind-2001 | e |
| viba_51024 | ISA/6/2022 | cattle | 97.3 | 0 | O | ME-SA | Ind-2001 | e |
| viba_51271 | ISA/Gresik/PVT-KBMS/2022 | cattle | 97.3 | 0 | O | ME-SA | Ind-2001 | e |
| viba_51235 | ISA/Pasuruan/A04222583/2022 | cattle | 97.3 | 0 | O | ME-SA | Ind-2001 | e |
| viba_51291 | ISA/HSU/A0522099-5/2022 | goat | 97.3 | 0 | O | ME-SA | Ind-2001 | e |

Most Closely Related Prototype Sequences

see <http://www.wrlfmd.org/fmdv-genome/fmd-prototype-strains>

| sequence | virus name | Host | % Id. | # Ambig. | serotype | topotype | lineage | sublineage |
|------------|---------------|---------|-------|----------|----------|----------|-----------|------------|
| viba_30238 | MUR/19/2016 | cattle | 93.5 | 0 | O | ME-SA | Ind-2001 | e |
| viba_293 | BHU/3/2009 | cattle | 90.2 | 0 | O | ME-SA | Ind-2001 | d |
| viba_541 | OMN/7/2001 | bovine | 90.2 | 0 | O | ME-SA | Ind-2001 | b |
| viba_705 | KUW/3/97 | bovine | 89.6 | 0 | O | ME-SA | Ind-2001 | a |
| viba_397 | UAE/4/2008 | gazelle | 88.3 | 0 | O | ME-SA | Ind-2001 | c |
| viba_27877 | SRL/2/97 | bovine | 88.3 | 0 | O | ME-SA | Srl-97 | |
| viba_359 | Manisa/TUR/69 | | 88.0 | 0 | O | ME-SA | | |
| viba_9021 | LAO/2/2006 | cattle | 87.7 | 0 | O | ME-SA | PanAsia | |
| viba_285 | UKG/35/2001 | porcine | 87.2 | 0 | O | ME-SA | PanAsia | |
| viba_650 | IRN/8/2005 | ovine | 87.1 | 0 | O | ME-SA | PanAsia-2 | |

| | |
|---|-----------------------------|
| Virus sample name: | ISA/Pasuruan/PVT/Pls-6/2024 |
| Sender reference: | ISA/Pasuruan/PVT/Pls-6/2024 |
| Location of origin: | Pasuruan, Jawa Timur |
| Country of origin: | Indonesia |
| Date of collection: | 23/02/2024 |
| Host species: | cattle |
| Serotype: | O |
| Topotype: | ME-SA |
| Lineage: | Ind-2001 |
| Sublineage: | e |
| Sequence length: | 633 |
| Ambiguities: | 0 |
| Material submitted for sequencing: | n/a |
| Harvest date of material: | n/a |
| Primers: | n/a |
| Received for sequencing: | n/a |
| Created: | 11/03/2024 |
| Last updated: | 11/03/2024 |
| VIBASys IDs: sample 55061, genome 55062, sequence viba_55063, sequencing info 55064 | |

Most Closely Related Sequences

| sequence | virus name | Host | % Id. | # Ambig. | serotype | topotype | lineage | sublineage |
|------------|-----------------------------|--------|-------|----------|----------|----------|----------|------------|
| viba_55055 | ISA/Kediri/PVT/Pr-6/2024 | cattle | 99.8 | 0 | O | ME-SA | Ind-2001 | e |
| viba_55067 | ISA/Pasuruan/PVT/Sw-2/2024 | cattle | 99.8 | 0 | O | ME-SA | Ind-2001 | e |
| viba_55059 | ISA/Kediri/PVT/Sw-Kb/2024 | goat | 99.4 | 3 | O | ME-SA | Ind-2001 | e |
| viba_50631 | PVT-S2AN/ISA/2022 | cattle | 97.9 | 0 | O | ME-SA | Ind-2001 | e |
| viba_51223 | ISA/Probolinggo/PVT/2022 | cattle | 97.9 | 0 | O | ME-SA | Ind-2001 | e |
| viba_51207 | ISA/Lamongan/PVT-VL6/2022 | cattle | 97.9 | 0 | O | ME-SA | Ind-2001 | e |
| viba_51024 | ISA/6/2022 | cattle | 97.9 | 0 | O | ME-SA | Ind-2001 | e |
| viba_51271 | ISA/Gresik/PVT-KBMS/2022 | cattle | 97.9 | 0 | O | ME-SA | Ind-2001 | e |
| viba_51235 | ISA/Pasuruan/A04222583/2022 | cattle | 97.9 | 0 | O | ME-SA | Ind-2001 | e |
| viba_51291 | ISA/HSU/A0522099-5/2022 | goat | 97.9 | 0 | O | ME-SA | Ind-2001 | e |

Most Closely Related Prototype Sequences

see <http://www.wrlfmd.org/fmdv-genome/fmd-prototype-strains>

| sequence | virus name | Host | % Id. | # Ambig. | serotype | topotype | lineage | sublineage |
|------------|---------------|---------|-------|----------|----------|----------|-----------|------------|
| viba_30238 | MUR/19/2016 | cattle | 94.2 | 0 | O | ME-SA | Ind-2001 | e |
| viba_293 | BHU/3/2009 | cattle | 90.7 | 0 | O | ME-SA | Ind-2001 | d |
| viba_541 | OMN/7/2001 | bovine | 90.7 | 0 | O | ME-SA | Ind-2001 | b |
| viba_705 | KUW/3/97 | bovine | 90.1 | 0 | O | ME-SA | Ind-2001 | a |
| viba_397 | UAE/4/2008 | gazelle | 88.5 | 0 | O | ME-SA | Ind-2001 | c |
| viba_27877 | SRL/2/97 | bovine | 88.5 | 0 | O | ME-SA | Srl-97 | |
| viba_359 | Manisa/TUR/69 | | 88.0 | 0 | O | ME-SA | | |
| viba_9021 | LAO/2/2006 | cattle | 87.9 | 0 | O | ME-SA | PanAsia | |
| viba_285 | UKG/35/2001 | porcine | 87.7 | 0 | O | ME-SA | PanAsia | |
| viba_650 | IRN/8/2005 | ovine | 87.5 | 0 | O | ME-SA | PanAsia-2 | |

| | |
|---|----------------------------|
| Virus sample name: | ISA/Pasuruan/PVT/Sw-2/2024 |
| Sender reference: | ISA/Pasuruan/PVT/Sw-2/2024 |
| Location of origin: | Pasuruan, Jawa Timur |
| Country of origin: | Indonesia |
| Date of collection: | 23/02/2024 |
| Host species: | cattle |
| Serotype: | O |
| Topotype: | ME-SA |
| Lineage: | Ind-2001 |
| Sublineage: | e |
| Sequence length: | 633 |
| Ambiguities: | 0 |
| Material submitted for sequencing: | n/a |
| Harvest date of material: | n/a |
| Primers: | n/a |
| Received for sequencing: | n/a |
| Created: | 11/03/2024 |
| Last updated: | 11/03/2024 |
| VIBASys IDs: sample 55065, genome 55066, sequence viba_55067, sequencing info 55068 | |

Most Closely Related Sequences

| sequence | virus name | Host | % Id. | # Ambig. | serotype | topotype | lineage | sublineage |
|------------|-----------------------------|--------|-------|----------|----------|----------|----------|------------|
| viba_55063 | ISA/Pasuruan/PVT/Pls-6/2024 | cattle | 99.8 | 0 | O | ME-SA | Ind-2001 | e |
| viba_55055 | ISA/Kediri/PVT/Pr-6/2024 | cattle | 99.7 | 0 | O | ME-SA | Ind-2001 | e |
| viba_55059 | ISA/Kediri/PVT/Sw-Kb/2024 | goat | 99.2 | 3 | O | ME-SA | Ind-2001 | e |
| viba_50631 | PVT-S2AN/ISA/2022 | cattle | 98.1 | 0 | O | ME-SA | Ind-2001 | e |
| viba_51223 | ISA/Probolinggo/PVT/2022 | cattle | 98.1 | 0 | O | ME-SA | Ind-2001 | e |
| viba_51207 | ISA/Lamongan/PVT-VL6/2022 | cattle | 98.1 | 0 | O | ME-SA | Ind-2001 | e |
| viba_51024 | ISA/6/2022 | cattle | 98.1 | 0 | O | ME-SA | Ind-2001 | e |
| viba_51271 | ISA/Gresik/PVT-KBMS/2022 | cattle | 98.1 | 0 | O | ME-SA | Ind-2001 | e |
| viba_51235 | ISA/Pasuruan/A04222583/2022 | cattle | 98.1 | 0 | O | ME-SA | Ind-2001 | e |
| viba_51291 | ISA/HSU/A0522099-5/2022 | goat | 98.1 | 0 | O | ME-SA | Ind-2001 | e |

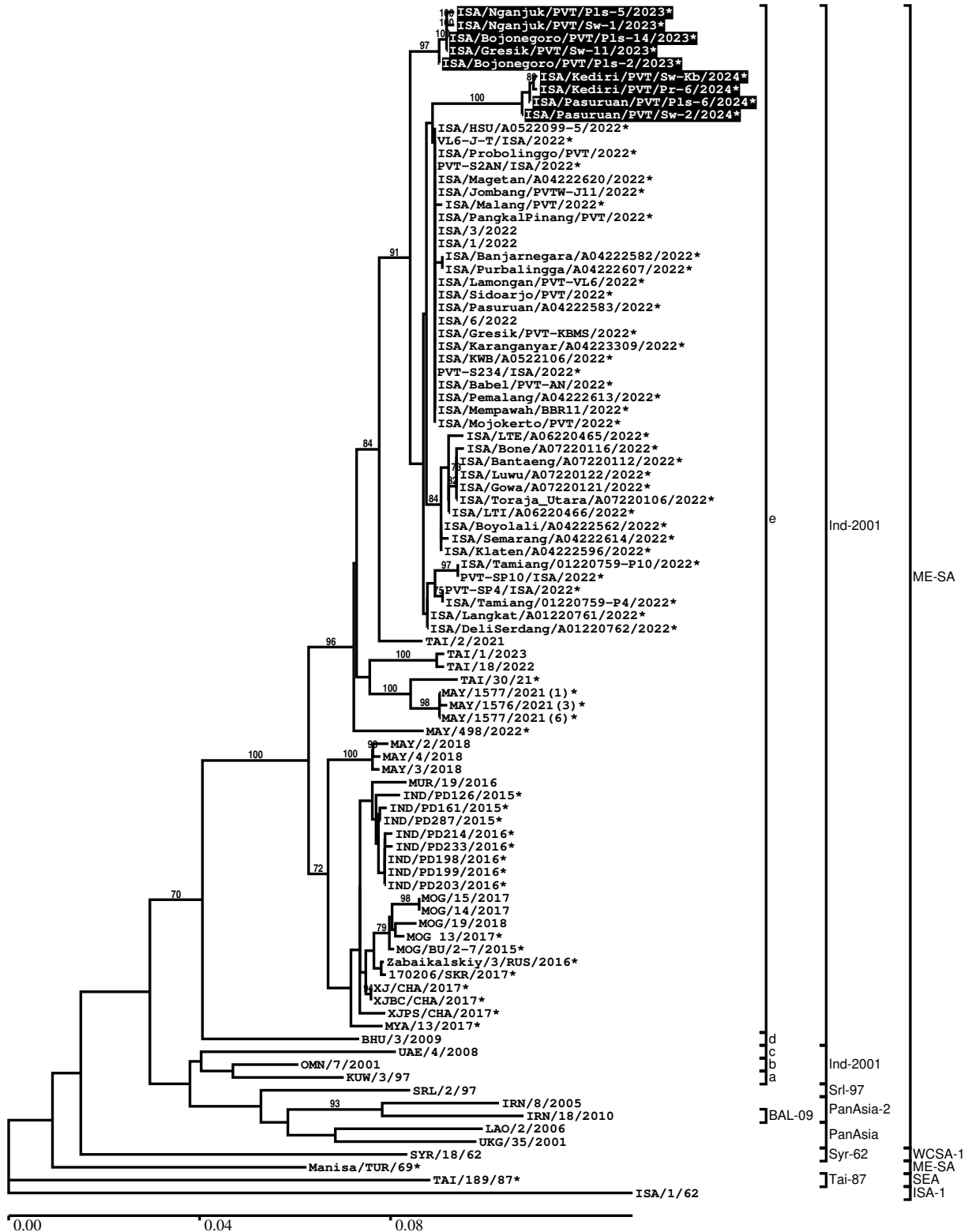
Most Closely Related Prototype Sequences

see <http://www.wrlfmd.org/fmdv-genome/fmd-prototype-strains>

| sequence | virus name | Host | % Id. | # Ambig. | serotype | topotype | lineage | sublineage |
|------------|---------------|---------|-------|----------|----------|----------|-----------|------------|
| viba_30238 | MUR/19/2016 | cattle | 94.3 | 0 | O | ME-SA | Ind-2001 | e |
| viba_541 | OMN/7/2001 | bovine | 90.9 | 0 | O | ME-SA | Ind-2001 | b |
| viba_293 | BHU/3/2009 | cattle | 90.8 | 0 | O | ME-SA | Ind-2001 | d |
| viba_705 | KUW/3/97 | bovine | 90.2 | 0 | O | ME-SA | Ind-2001 | a |
| viba_397 | UAE/4/2008 | gazelle | 88.6 | 0 | O | ME-SA | Ind-2001 | c |
| viba_27877 | SRL/2/97 | bovine | 88.6 | 0 | O | ME-SA | Srl-97 | |
| viba_359 | Manisa/TUR/69 | | 88.2 | 0 | O | ME-SA | | |
| viba_9021 | LAO/2/2006 | cattle | 88.0 | 0 | O | ME-SA | PanAsia | |
| viba_285 | UKG/35/2001 | porcine | 87.9 | 0 | O | ME-SA | PanAsia | |
| viba_650 | IRN/8/2005 | ovine | 87.7 | 0 | O | ME-SA | PanAsia-2 | |

Report on FMDV O in Indonesia in 2024

Batch: WRLMEG/2024/000003



*, not a WRLFMD Reference Number

Analysis Parameters

| | |
|--|--|
| VP1 subsequence extractor: | vp1_O |
| Query sequence set: | WRLMEG/2024/000003-Indonesia-O (9 sequences) |
| Sequence database set: | allseqs_O (6196 sequences) |
| Prototype sequence set: | !prototypes_O (58 sequences) |
| Number of related sequences reported: | 10 |
| Minimal VP1 subsequence match length | 600 |
| Sequence alignment method: | muscle (default parameters) |
| Sequence alignment length: | 636 |
| Phylogeny reconstruction method: | fdnadist, fneighbor |
| Number of bootstrap samples: | 1000 |
| Random seed for bootstrapping: | 1 |
| Displaying bootstrap values above: | 70.0% |
| Number of sequences in tree capped at: | 100 |
| Number of prototype sequences in tree: | 12 |
| VIBASys version: | reflabs-1.1.2 |

Sequences in the Phylogenetic Tree

All sequences in the tree are in taxonomic group FMDV/O

| label | accession | host(s) | lab | country | taxonomic information |
|----------------------------------|-----------|---------|----------|-----------|-----------------------|
| ISA/Nganjuk/PVT/Pls-5/2023* | n/a | cattle | PUSVETMA | Indonesia | ME-SA/Ind-2001/e |
| ISA/Nganjuk/PVT/Sw-1/2023* | n/a | cattle | PUSVETMA | Indonesia | ME-SA/Ind-2001/e |
| ISA/Bojonegoro/PVT/Pls-14/2023* | n/a | cattle | PUSVETMA | Indonesia | ME-SA/Ind-2001/e |
| ISA/Gresik/PVT/Sw-11/2023* | n/a | cattle | PUSVETMA | Indonesia | ME-SA/Ind-2001/e |
| ISA/Bojonegoro/PVT/Pls-2/2023* | n/a | cattle | PUSVETMA | Indonesia | ME-SA/Ind-2001/e |
| ISA/Kediri/PVT/Sw-Kb/2024* | n/a | goat | PUSVETMA | Indonesia | ME-SA/Ind-2001/e |
| ISA/Kediri/PVT/Pr-6/2024* | n/a | cattle | PUSVETMA | Indonesia | ME-SA/Ind-2001/e |
| ISA/Pasuruan/PVT/Pls-6/2024* | n/a | cattle | PUSVETMA | Indonesia | ME-SA/Ind-2001/e |
| ISA/Pasuruan/PVT/Sw-2/2024* | n/a | goat | PUSVETMA | Indonesia | ME-SA/Ind-2001/e |
| ISA/HSU/A0522099-5/2022* | ON854957 | goat | DICWY | Indonesia | ME-SA/Ind-2001/e |
| VL6-J-T/ISA/2022* | n/a | n/a | Pusvetma | Indonesia | ME-SA/Ind-2001/e |
| ISA/Probolinggo/PVT/2022* | ON854940 | cattle | DICWY | Indonesia | ME-SA/Ind-2001/e |
| PVT-S2AN/ISA/2022* | n/a | cattle | Pusvetma | Indonesia | ME-SA/Ind-2001/e |
| ISA/Magetan/A04222620/2022* | ON854956 | cattle | DICWY | Indonesia | ME-SA/Ind-2001/e |
| ISA/Jombang/PVTW-J11/2022* | ON854951 | goat | DICWY | Indonesia | ME-SA/Ind-2001/e |
| ISA/Malang/PVT/2022* | ON854941 | cattle | DICWY | Indonesia | ME-SA/Ind-2001/e |
| ISA/Pangkalpinang/PVT/2022* | ON854944 | cattle | DICWY | Indonesia | ME-SA/Ind-2001/e |
| ISA/3/2022 | n/a | cattle | WRLFMD | Indonesia | ME-SA/Ind-2001/e |
| ISA/1/2022 | n/a | cattle | WRLFMD | Indonesia | ME-SA/Ind-2001/e |
| ISA/Banjarnegara/A04222582/2022* | ON854949 | cattle | DICWY | Indonesia | ME-SA/Ind-2001/e |
| ISA/Purbalingga/A04222607/2022* | ON854953 | cattle | DICWY | Indonesia | ME-SA/Ind-2001/e |
| ISA/Lamongan/PVT-VL6/2022* | ON854936 | cattle | DICWY | Indonesia | ME-SA/Ind-2001/e |
| ISA/Sidoarjo/PVT/2022* | ON854937 | cattle | DICWY | Indonesia | ME-SA/Ind-2001/e |
| ISA/Pasuruan/A04222583/2022* | ON854943 | cattle | DICWY | Indonesia | ME-SA/Ind-2001/e |
| ISA/6/2022 | n/a | cattle | WRLFMD | Indonesia | ME-SA/Ind-2001/e |
| ISA/Gresik/PVT-KBMS/2022* | ON854952 | cattle | DICWY | Indonesia | ME-SA/Ind-2001/e |
| ISA/Karanganyar/A04223309/2022* | n/a | n/a | PUSVETMA | Indonesia | ME-SA/Ind-2001/e |
| ISA/KWB/A0522106/2022* | ON854948 | cattle | DICWY | Indonesia | ME-SA/Ind-2001/e |
| PVT-S234/ISA/2022* | n/a | cattle | Pusvetma | Indonesia | ME-SA/Ind-2001/e |
| ISA/Babel/PVT-AN/2022* | ON854939 | cattle | DICWY | Indonesia | ME-SA/Ind-2001/e |
| ISA/Pemalang/A04222613/2022* | ON854954 | cattle | DICWY | Indonesia | ME-SA/Ind-2001/e |
| ISA/Mempawah/BBR11/2022* | ON854947 | goat | DICWY | Indonesia | ME-SA/Ind-2001/e |
| ISA/Mojokerto/PVT/2022* | ON854938 | cattle | DICWY | Indonesia | ME-SA/Ind-2001/e |
| ISA/LTE/A06220465/2022* | ON854945 | cattle | DICWY | Indonesia | ME-SA/Ind-2001/e |
| ISA/Bone/A07220116/2022* | n/a | n/a | PUSVETMA | Indonesia | ME-SA/Ind-2001/e |
| ISA/Bantaeng/A07220112/2022* | n/a | n/a | PUSVETMA | Indonesia | ME-SA/Ind-2001/e |

continued on next page

| label | accession | host(s) | lab | country | taxonomic information |
|----------------------------------|-----------|---------|------------|---------------------------------|------------------------|
| ISA/Luwu/A07220122/2022* | n/a | n/a | PUSVETMA | Indonesia | ME-SA/Ind-2001/e |
| ISA/Gowa/A07220121/2022* | n/a | n/a | PUSVETMA | Indonesia | ME-SA/Ind-2001/e |
| ISA/Toraja_Utara/A07220106/2022* | n/a | n/a | PUSVETMA | Indonesia | ME-SA/Ind-2001/e |
| ISA/LTI/A06220466/2022* | ON854946 | cattle | DICWY | Indonesia | ME-SA/Ind-2001/e |
| ISA/Boyolali/A04222562/2022* | ON854942 | cattle | DICWY | Indonesia | ME-SA/Ind-2001/e |
| ISA/Semarang/A04222614/2022* | ON854955 | cattle | DICWY | Indonesia | ME-SA/Ind-2001/e |
| ISA/Klaten/A04222596/2022* | ON854950 | cattle | DICWY | Indonesia | ME-SA/Ind-2001/e |
| ISA/Tamiang/01220759-P10/2022* | ON783874 | cattle | DICWY | Indonesia | ME-SA/Ind-2001/e |
| PVT-SP10/ISA/2022* | n/a | cattle | Pusvetma | Indonesia | ME-SA/Ind-2001/e |
| PVT-SP4/ISA/2022* | n/a | cattle | Pusvetma | Indonesia | ME-SA/Ind-2001/e |
| ISA/Tamiang/01220759-P4/2022* | ON783873 | cattle | DICWY | Indonesia | ME-SA/Ind-2001/e |
| ISA/Langkat/A01220761/2022* | ON854934 | cattle | DICWY | Indonesia | ME-SA/Ind-2001/e |
| ISA/DeliSerdang/A01220762/2022* | ON854935 | cattle | DICWY | Indonesia | ME-SA/Ind-2001/e |
| TAI/2/2021 | n/a | cattle | WRLFMD | Thailand | ME-SA/Ind-2001/e |
| TAI/1/2023 | n/a | cattle | WRLFMD | Thailand | ME-SA/Ind-2001/e |
| TAI/18/2022 | n/a | cattle | WRLFMD | Thailand | ME-SA/Ind-2001/e |
| TAI/30/21* | n/a | bovine | TRRL | Thailand | ME-SA/Ind-2001/e |
| MAY/1577/2021(1)* | n/a | cattle | MNFMDL | Malaysia | ME-SA/Ind-2001/e |
| MAY/1576/2021(3)* | n/a | cattle | MNFMDL | Malaysia | ME-SA/Ind-2001/e |
| MAY/1577/2021(6)* | n/a | cattle | MNFMDL | Malaysia | ME-SA/Ind-2001/e |
| MAY/498/2022* | n/a | cattle | MNFMDL | Malaysia | ME-SA/Ind-2001/e |
| MAY/2/2018 | n/a | cattle | WRLFMD | Malaysia | ME-SA/Ind-2001/e |
| MAY/4/2018 | n/a | cattle | WRLFMD | Malaysia | ME-SA/Ind-2001/e |
| MAY/3/2018 | n/a | cattle | WRLFMD | Malaysia | ME-SA/Ind-2001/e |
| MUR/19/2016 | MG972510 | cattle | WRLFMD | Mauritius | ME-SA/Ind-2001/e |
| IND/PD126/2015* | MT909626 | cattle | PD-FMD | India | ME-SA/Ind-2001/e |
| IND/PD161/2015* | MT909637 | cattle | PD-FMD | India | ME-SA/Ind-2001/e |
| IND/PD287/2015* | MT909659 | cattle | PD-FMD | India | ME-SA/Ind-2001/e |
| IND/PD214/2016* | MT909675 | cattle | PD-FMD | India | ME-SA/Ind-2001/e |
| IND/PD233/2016* | MT909676 | cattle | PD-FMD | India | ME-SA/Ind-2001/e |
| IND/PD198/2016* | MT909672 | cattle | PD-FMD | India | ME-SA/Ind-2001/e |
| IND/PD199/2016* | MT909673 | cattle | PD-FMD | India | ME-SA/Ind-2001/e |
| IND/PD203/2016* | MT909674 | cattle | PD-FMD | India | ME-SA/Ind-2001/e |
| MOG/15/2017 | n/a | cattle | WRLFMD | Mongolia | ME-SA/Ind-2001/e |
| MOG/14/2017 | n/a | cattle | WRLFMD | Mongolia | ME-SA/Ind-2001/e |
| MOG/19/2018 | n/a | sheep | WRLFMD | Mongolia | ME-SA/Ind-2001/e |
| MOG 13/2017* | n/a | cattle | ARRIAH | Mongolia | ME-SA/Ind-2001/e |
| MOG/BU/2-7/2015* | LC320038 | cattle | NIAH-Japan | Mongolia | ME-SA/Ind-2001/e |
| Zabaikalskiy/3/RUS/2016* | MG972584 | cattle | ARRIAH | Russia | ME-SA/Ind-2001/e |
| 170206/SKR/2017* | n/a | cattle | QIA | Republic of Korea (South Korea) | ME-SA/Ind-2001/e |
| XJ/CHA/2017* | MF461724 | cattle | LVRI | China | ME-SA/Ind-2001/e |
| XJBC/CHA/2017* | KY696708 | n/a | LVRI | China | ME-SA/Ind-2001/e |
| XJPS/CHA/2017* | KY696707 | n/a | LVRI | China | ME-SA/Ind-2001/e |
| MYA/13/2017* | MG972527 | cattle | TRRL | Myanmar | ME-SA/Ind-2001/e |
| BHU/3/2009 | KM921814 | cattle | WRLFMD | Bhutan | ME-SA/Ind-2001/d |
| UAE/4/2008 | KM921876 | gazelle | WRLFMD | United Arab Emirates | ME-SA/Ind-2001/c |
| OMN/7/2001 | DQ164941 | bovine | WRLFMD | Oman | ME-SA/Ind-2001/b |
| KUW/3/97 | DQ164904 | bovine | WRLFMD | Kuwait | ME-SA/Ind-2001/a |
| SRL/2/97 | AJ303531 | bovine | WRLFMD | Sri Lanka | ME-SA/Sri-97 |
| IRN/8/2005 | KY091281 | ovine | WRLFMD | Iran | ME-SA/PanAsia-2 |
| IRN/18/2010 | KY091283 | cattle | WRLFMD | Iran | ME-SA/PanAsia-2/BAL-09 |
| LAO/2/2006 | EU667451 | cattle | WRLFMD | Laos | ME-SA/PanAsia |
| UKG/35/2001 | AJ539141 | porcine | PIADC | United Kingdom | ME-SA/PanAsia |
| SYR/18/62 | MK390935 | n/a | WRLFMD | Syria | WC-SA-1/Syr-62 |
| Manisa/TUR/69* | AY593823 | n/a | PIADC | Turkiye | ME-SA |
| TAI/189/87* | KY091288 | bovine | TRRL | Thailand | SEA/Tai-87 |
| ISA/1/62 | AJ303500 | n/a | WRLFMD | Indonesia | ISA-1 |

*, not a WRLFMD Reference Number

n/a, not available