

FAO World Reference Laboratory for Foot-and-Mouth Disease (WRLFMD)

Genotyping Report

FMDV serotype: SAT2
Country: Ethiopia
Year: 2022, 2023
Batch: WRLFMD/2024/000005
No. of sequences: 44
Report date: 30th June 2024
Report generated by: Nick Knowles
Report checked by: Jemma Wadsworth



Copyright © 2024 The Pirbright Institute, Ash Road, Pirbright, Woking GU24 0NF, United Kingdom.

www: <http://www.wrlfmd.org/>

email: reporting@pirbright.ac.uk

The contents of this report should not be reproduced without permission.

Virus sample name:	ETH/75/2022a
Sender reference:	28518
Location of origin:	Negele Arsi, East Shoa, Oromia
Country of origin:	Ethiopia
Date of collection:	24/10/2022
Host species:	cattle
Serotype:	SAT2
Topotype:	XIV
Lineage:	
Sublineage:	
Sequence length:	642
Ambiguities:	0
Material submitted for sequencing:	WRL-LFBK2
Harvest date of material:	14/05/2024
Primers:	SAT2-P1-1223F/SAT-2B208R
Received for sequencing:	30/05/2024
Created:	30/06/2024
Last updated:	30/06/2024
VIBASys IDs: sample 55366, genome 55367, sequence viba_55368, sequencing info 55369	

Most Closely Related Sequences

sequence	virus name	Host	% Id.	# Ambig.	serotype	topotype	lineage	sublineage
viba_55356	ETH/77/2022	cattle	100.0	0	SAT2	XIV		
viba_55336	ETH/61/2022	cattle	100.0	0	SAT2	XIV		
viba_55288	ETH/28/2022	cattle	98.6	0	SAT2	XIV		
viba_55292	ETH/29/2022	cattle	98.6	0	SAT2	XIV		
viba_55240	ETH/109/2022	cattle	98.4	0	SAT2	XIV		
viba_55380	ETH/2/2023	cattle	98.4	0	SAT2	XIV		
viba_53250	BAR/2/2022	cattle	98.4	0	SAT2	XIV		
viba_55376	ETH/1/2023	cattle	98.4	0	SAT2	XIV		
viba_55388	ETH/4/2023	cattle	98.4	0	SAT2	XIV		
viba_55248	ETH/110/2022	cattle	98.4	0	SAT2	XIV		

Most Closely Related Prototype Sequences

see <http://www.wrlfmd.org/fmdv-genome/fmd-prototype-strains>

sequence	virus name	Host	% Id.	# Ambig.	serotype	topotype	lineage	sublineage
viba_51516	ETH/2/2022	bovine	97.8	0	SAT2	XIV		
viba_724	ETH/2/91	cattle	83.7	0	SAT2	XIV		
viba_500	NIG/2/75	bovine	74.5	0	SAT2	V		
viba_193	SUD/6/77		74.4	0	SAT2	XIII		
viba_139	ETH/2/2007	cattle	74.3	0	SAT2	XIII		
viba_728	GHA/2/90	bovine	74.0	0	SAT2	V		
viba_470	KEN/2/84	bovine	73.9	0	SAT2	IX		
viba_752	SA/106/59		73.7	0	SAT2	I		
viba_111	MAL/1/2003	bovine	73.6	0	SAT2	I		
viba_380	RHO/1/48		72.7	0	SAT2	III		

Virus sample name:	ETH/75/2022b
Sender reference:	28518
Location of origin:	Negele Arsi, East Shoa, Oromia
Country of origin:	Ethiopia
Date of collection:	24/10/2022
Host species:	cattle
Serotype:	SAT2
Topotype:	XIV
Lineage:	
Sublineage:	
Sequence length:	642
Ambiguities:	0
Material submitted for sequencing:	WRL-LFBK2
Harvest date of material:	14/05/2024
Primers:	SAT2-1C445F/SAT-2B208R
Received for sequencing:	30/05/2024
Created:	30/06/2024
Last updated:	30/06/2024
VIBASys IDs: sample 55370, genome 55371, sequence viba_55372, sequencing info 55373	

Most Closely Related Sequences

sequence	virus name	Host	% Id.	# Ambig.	serotype	topotype	lineage	sublineage
viba_55348	ETH/64/2022	cattle	99.8	0	SAT2	XIV		
viba_55352	ETH/66/2022	cattle	99.4	0	SAT2	XIV		
viba_55332	ETH/57/2022	cattle	99.2	0	SAT2	XIV		
viba_55344	ETH/63/2022	cattle	99.2	0	SAT2	XIV		
viba_55340	ETH/62/2022	cattle	99.2	0	SAT2	XIV		
viba_55272	ETH/17/2022	cattle	99.1	0	SAT2	XIV		
viba_55268	ETH/16/2022	cattle	98.9	0	SAT2	XIV		
viba_51520	ETH/3/2022	bovine	98.8	0	SAT2	XIV		
viba_51516	ETH/2/2022	bovine	98.6	0	SAT2	XIV		
viba_55264	ETH/13/2022	cattle	98.4	0	SAT2	XIV		

Most Closely Related Prototype Sequences

see <http://www.wrlfmd.org/fmdv-genome/fmd-prototype-strains>

sequence	virus name	Host	% Id.	# Ambig.	serotype	topotype	lineage	sublineage
viba_51516	ETH/2/2022	bovine	98.6	0	SAT2	XIV		
viba_724	ETH/2/91	cattle	84.0	0	SAT2	XIV		
viba_139	ETH/2/2007	cattle	75.4	0	SAT2	XIII		
viba_470	KEN/2/84	bovine	75.1	0	SAT2	IX		
viba_111	MAL/1/2003	bovine	74.9	0	SAT2	I		
viba_193	SUD/6/77		74.5	0	SAT2	XIII		
viba_500	NIG/2/75	bovine	74.4	0	SAT2	V		
viba_752	SA/106/59		74.2	0	SAT2	I		
viba_183	ZIM/14/2002	bovine	73.9	0	SAT2	I		
viba_728	GHA/2/90	bovine	73.7	0	SAT2	V		

Virus sample name:	ETH/9/2022
Sender reference:	21905
Location of origin:	Gibe, Hadiya, SNNPR
Country of origin:	Ethiopia
Date of collection:	28/05/2022
Host species:	cattle
Serotype:	SAT2
Topotype:	XIV
Lineage:	
Sublineage:	
Sequence length:	642
Ambiguities:	0
Material submitted for sequencing:	WRL-LFBK1
Harvest date of material:	24/04/2024
Primers:	SAT2-1C445F; SAT2-P1-1223F; SAT2VP3-AB/SAT-2B208R
Received for sequencing:	30/05/2024
Created:	30/06/2024
Last updated:	30/06/2024
VIBASys IDs: sample 55214, genome 55215, sequence viba_55216, sequencing info 55217	

Most Closely Related Sequences

sequence	virus name	Host	% Id.	# Ambig.	serotype	topotype	lineage	sublineage
viba_55220	ETH/10/2022	cattle	100.0	0	SAT2	XIV		
viba_55288	ETH/28/2022	cattle	99.4	0	SAT2	XIV		
viba_55292	ETH/29/2022	cattle	99.4	0	SAT2	XIV		
viba_55256	ETH/112/2022	cattle	99.2	1	SAT2	XIV		
viba_55240	ETH/109/2022	cattle	99.2	0	SAT2	XIV		
viba_53250	BAR/2/2022	cattle	99.2	0	SAT2	XIV		
viba_55248	ETH/110/2022	cattle	99.2	0	SAT2	XIV		
viba_55236	ETH/108/2022	cattle	99.2	0	SAT2	XIV		
viba_55232	ETH/107/2022	cattle	99.2	0	SAT2	XIV		
viba_55224	ETH/105/2022	cattle	99.2	0	SAT2	XIV		

Most Closely Related Prototype Sequences

see <http://www.wrlfmd.org/fmdv-genome/fmd-prototype-strains>

sequence	virus name	Host	% Id.	# Ambig.	serotype	topotype	lineage	sublineage
viba_51516	ETH/2/2022	bovine	98.9	0	SAT2	XIV		
viba_724	ETH/2/91	cattle	84.0	0	SAT2	XIV		
viba_470	KEN/2/84	bovine	75.0	0	SAT2	IX		
viba_139	ETH/2/2007	cattle	74.8	0	SAT2	XIII		
viba_193	SUD/6/77		74.8	0	SAT2	XIII		
viba_752	SA/106/59		74.4	0	SAT2	I		
viba_111	MAL/1/2003	bovine	74.4	0	SAT2	I		
viba_500	NIG/2/75	bovine	74.2	0	SAT2	V		
viba_183	ZIM/14/2002	bovine	74.0	0	SAT2	I		
viba_728	GHA/2/90	bovine	73.5	0	SAT2	V		

Virus sample name:	ETH/10/2022
Sender reference:	21906
Location of origin:	Gibe, Hadiya, SNNPR
Country of origin:	Ethiopia
Date of collection:	28/05/2022
Host species:	cattle
Serotype:	SAT2
Topotype:	XIV
Lineage:	
Sublineage:	
Sequence length:	642
Ambiguities:	0
Material submitted for sequencing:	WRL-LFBK1
Harvest date of material:	24/04/2024
Primers:	SAT2-1C445F; SAT2-P1-1223F; SAT2VP3-AB/SAT-2B208R
Received for sequencing:	30/05/2024
Created:	30/06/2024
Last updated:	30/06/2024
VIBASys IDs: sample 55218, genome 55219, sequence viba_55220, sequencing info 55221	

Most Closely Related Sequences

sequence	virus name	Host	% Id.	# Ambig.	serotype	topotype	lineage	sublineage
viba_55216	ETH/9/2022	cattle	100.0	0	SAT2	XIV		
viba_55288	ETH/28/2022	cattle	99.4	0	SAT2	XIV		
viba_55292	ETH/29/2022	cattle	99.4	0	SAT2	XIV		
viba_55256	ETH/112/2022	cattle	99.2	1	SAT2	XIV		
viba_55240	ETH/109/2022	cattle	99.2	0	SAT2	XIV		
viba_53250	BAR/2/2022	cattle	99.2	0	SAT2	XIV		
viba_55248	ETH/110/2022	cattle	99.2	0	SAT2	XIV		
viba_55236	ETH/108/2022	cattle	99.2	0	SAT2	XIV		
viba_55232	ETH/107/2022	cattle	99.2	0	SAT2	XIV		
viba_55224	ETH/105/2022	cattle	99.2	0	SAT2	XIV		

Most Closely Related Prototype Sequences

see <http://www.wrlfmd.org/fmdv-genome/fmd-prototype-strains>

sequence	virus name	Host	% Id.	# Ambig.	serotype	topotype	lineage	sublineage
viba_51516	ETH/2/2022	bovine	98.9	0	SAT2	XIV		
viba_724	ETH/2/91	cattle	84.0	0	SAT2	XIV		
viba_470	KEN/2/84	bovine	75.0	0	SAT2	IX		
viba_139	ETH/2/2007	cattle	74.8	0	SAT2	XIII		
viba_193	SUD/6/77		74.8	0	SAT2	XIII		
viba_752	SA/106/59		74.4	0	SAT2	I		
viba_111	MAL/1/2003	bovine	74.4	0	SAT2	I		
viba_500	NIG/2/75	bovine	74.2	0	SAT2	V		
viba_183	ZIM/14/2002	bovine	74.0	0	SAT2	I		
viba_728	GHA/2/90	bovine	73.5	0	SAT2	V		

Virus sample name:	ETH/11/2022
Sender reference:	20779
Location of origin:	Dedo, Jima, Oromia
Country of origin:	Ethiopia
Date of collection:	31/05/2022
Host species:	cattle
Serotype:	SAT2
Topotype:	XIV
Lineage:	
Sublineage:	
Sequence length:	642
Ambiguities:	0
Material submitted for sequencing:	WRL-LFBK2
Harvest date of material:	26/04/2024
Primers:	SAT2-1C445F; SAT2-P1-1223F; SAT2VP3-AB/SAT-2B208R
Received for sequencing:	30/05/2024
Created:	30/06/2024
Last updated:	30/06/2024
VIBASys IDs: sample 55242, genome 55243, sequence viba_55244, sequencing info 55245	

Most Closely Related Sequences

sequence	virus name	Host	% Id.	# Ambig.	serotype	topotype	lineage	sublineage
viba_55264	ETH/13/2022	cattle	100.0	0	SAT2	XIV		
viba_55260	ETH/12/2022	cattle	100.0	0	SAT2	XIV		
viba_51516	ETH/2/2022	bovine	99.2	0	SAT2	XIV		
viba_55364	ETH/90/2022	cattle	99.2	0	SAT2	XIV		
viba_51520	ETH/3/2022	bovine	99.1	0	SAT2	XIV		
viba_54473	TUR/20/2023a	cattle	98.8	0	SAT2	XIV		
viba_52881	OMN/1434/2023		98.8	0	SAT2	XIV		
viba_52593	IRQ/7/2023	cattle	98.8	0	SAT2	XIV		
viba_55304	ETH/43/2022	cattle	98.8	0	SAT2	XIV		
viba_55308	ETH/44/2022	cattle	98.8	0	SAT2	XIV		

Most Closely Related Prototype Sequences

see <http://www.wrlfmd.org/fmdv-genome/fmd-prototype-strains>

sequence	virus name	Host	% Id.	# Ambig.	serotype	topotype	lineage	sublineage
viba_51516	ETH/2/2022	bovine	99.2	0	SAT2	XIV		
viba_724	ETH/2/91	cattle	84.3	0	SAT2	XIV		
viba_139	ETH/2/2007	cattle	75.4	0	SAT2	XIII		
viba_470	KEN/2/84	bovine	75.1	0	SAT2	IX		
viba_193	SUD/6/77		75.0	0	SAT2	XIII		
viba_500	NIG/2/75	bovine	74.6	0	SAT2	V		
viba_183	ZIM/14/2002	bovine	74.4	0	SAT2	I		
viba_728	GHA/2/90	bovine	74.2	0	SAT2	V		
viba_111	MAL/1/2003	bovine	74.0	0	SAT2	I		
viba_752	SA/106/59		73.9	0	SAT2	I		

Virus sample name:	ETH/12/2022
Sender reference:	20781
Location of origin:	Dedo, Jima, Oromia
Country of origin:	Ethiopia
Date of collection:	31/05/2022
Host species:	cattle
Serotype:	SAT2
Topotype:	XIV
Lineage:	
Sublineage:	
Sequence length:	642
Ambiguities:	0
Material submitted for sequencing:	WRL-LFBK2
Harvest date of material:	30/04/2024
Primers:	SAT2-1C445F; SAT2-P1-1223F; SAT2VP3-AB/SAT-2B208R
Received for sequencing:	30/05/2024
Created:	30/06/2024
Last updated:	30/06/2024
VIBASys IDs: sample 55258, genome 55259, sequence viba_55260, sequencing info 55261	

Most Closely Related Sequences

sequence	virus name	Host	% Id.	# Ambig.	serotype	topotype	lineage	sublineage
viba_55264	ETH/13/2022	cattle	100.0	0	SAT2	XIV		
viba_55244	ETH/11/2022	cattle	100.0	0	SAT2	XIV		
viba_51516	ETH/2/2022	bovine	99.2	0	SAT2	XIV		
viba_55364	ETH/90/2022	cattle	99.2	0	SAT2	XIV		
viba_51520	ETH/3/2022	bovine	99.1	0	SAT2	XIV		
viba_54473	TUR/20/2023a	cattle	98.8	0	SAT2	XIV		
viba_52881	OMN/1434/2023		98.8	0	SAT2	XIV		
viba_52593	IRQ/7/2023	cattle	98.8	0	SAT2	XIV		
viba_55304	ETH/43/2022	cattle	98.8	0	SAT2	XIV		
viba_55308	ETH/44/2022	cattle	98.8	0	SAT2	XIV		

Most Closely Related Prototype Sequences

see <http://www.wrlfmd.org/fmdv-genome/fmd-prototype-strains>

sequence	virus name	Host	% Id.	# Ambig.	serotype	topotype	lineage	sublineage
viba_51516	ETH/2/2022	bovine	99.2	0	SAT2	XIV		
viba_724	ETH/2/91	cattle	84.3	0	SAT2	XIV		
viba_139	ETH/2/2007	cattle	75.4	0	SAT2	XIII		
viba_470	KEN/2/84	bovine	75.1	0	SAT2	IX		
viba_193	SUD/6/77		75.0	0	SAT2	XIII		
viba_500	NIG/2/75	bovine	74.6	0	SAT2	V		
viba_183	ZIM/14/2002	bovine	74.4	0	SAT2	I		
viba_728	GHA/2/90	bovine	74.2	0	SAT2	V		
viba_111	MAL/1/2003	bovine	74.0	0	SAT2	I		
viba_752	SA/106/59		73.9	0	SAT2	I		

Virus sample name:	ETH/13/2022
Sender reference:	20784
Location of origin:	Dedo, Jima, Oromia
Country of origin:	Ethiopia
Date of collection:	31/05/2022
Host species:	cattle
Serotype:	SAT2
Topotype:	XIV
Lineage:	
Sublineage:	
Sequence length:	642
Ambiguities:	0
Material submitted for sequencing:	WRL-LFBK1
Harvest date of material:	25/04/2024
Primers:	SAT2-1C445F; SAT2-P1-1223F; SAT2VP3-AB/SAT-2B208R
Received for sequencing:	30/05/2024
Created:	30/06/2024
Last updated:	30/06/2024
VIBASys IDs: sample 55262, genome 55263, sequence viba_55264, sequencing info 55265	

Most Closely Related Sequences

sequence	virus name	Host	% Id.	# Ambig.	serotype	topotype	lineage	sublineage
viba_55244	ETH/11/2022	cattle	100.0	0	SAT2	XIV		
viba_55260	ETH/12/2022	cattle	100.0	0	SAT2	XIV		
viba_51516	ETH/2/2022	bovine	99.2	0	SAT2	XIV		
viba_55364	ETH/90/2022	cattle	99.2	0	SAT2	XIV		
viba_51520	ETH/3/2022	bovine	99.1	0	SAT2	XIV		
viba_54473	TUR/20/2023a	cattle	98.8	0	SAT2	XIV		
viba_52881	OMN/1434/2023		98.8	0	SAT2	XIV		
viba_52593	IRQ/7/2023	cattle	98.8	0	SAT2	XIV		
viba_55304	ETH/43/2022	cattle	98.8	0	SAT2	XIV		
viba_55308	ETH/44/2022	cattle	98.8	0	SAT2	XIV		

Most Closely Related Prototype Sequences

see <http://www.wrlfmd.org/fmdv-genome/fmd-prototype-strains>

sequence	virus name	Host	% Id.	# Ambig.	serotype	topotype	lineage	sublineage
viba_51516	ETH/2/2022	bovine	99.2	0	SAT2	XIV		
viba_724	ETH/2/91	cattle	84.3	0	SAT2	XIV		
viba_139	ETH/2/2007	cattle	75.4	0	SAT2	XIII		
viba_470	KEN/2/84	bovine	75.1	0	SAT2	IX		
viba_193	SUD/6/77		75.0	0	SAT2	XIII		
viba_500	NIG/2/75	bovine	74.6	0	SAT2	V		
viba_183	ZIM/14/2002	bovine	74.4	0	SAT2	I		
viba_728	GHA/2/90	bovine	74.2	0	SAT2	V		
viba_111	MAL/1/2003	bovine	74.0	0	SAT2	I		
viba_752	SA/106/59		73.9	0	SAT2	I		

Virus sample name:	ETH/16/2022
Sender reference:	20795
Location of origin:	Goro, Southwest Shoa, Oromia
Country of origin:	Ethiopia
Date of collection:	31/05/2022
Host species:	cattle
Serotype:	SAT2
Topotype:	XIV
Lineage:	
Sublineage:	
Sequence length:	642
Ambiguities:	0
Material submitted for sequencing:	WRL-LFBK1
Harvest date of material:	25/04/2024
Primers:	SAT2-1C445F; SAT2-P1-1223F; SAT2VP3-AB/SAT-2B208R
Received for sequencing:	30/05/2024
Created:	30/06/2024
Last updated:	30/06/2024

VIBASys IDs: sample 55266, genome 55267, sequence viba_55268, sequencing info 55269

Most Closely Related Sequences

sequence	virus name	Host	% Id.	# Ambig.	serotype	topotype	lineage	sublineage
viba_55272	ETH/17/2022	cattle	99.8	0	SAT2	XIV		
viba_55352	ETH/66/2022	cattle	99.5	0	SAT2	XIV		
viba_55332	ETH/57/2022	cattle	99.4	0	SAT2	XIV		
viba_55344	ETH/63/2022	cattle	99.4	0	SAT2	XIV		
viba_55340	ETH/62/2022	cattle	99.4	0	SAT2	XIV		
viba_51520	ETH/3/2022	bovine	99.2	0	SAT2	XIV		
viba_51516	ETH/2/2022	bovine	99.1	0	SAT2	XIV		
viba_55348	ETH/64/2022	cattle	99.1	0	SAT2	XIV		
viba_52881	OMN/1434/2023		98.9	0	SAT2	XIV		
viba_55372	ETH/75/2022b	cattle	98.9	0	SAT2	XIV		

Most Closely Related Prototype Sequences

see <http://www.wrlfmd.org/fmdv-genome/fmd-prototype-strains>

sequence	virus name	Host	% Id.	# Ambig.	serotype	topotype	lineage	sublineage
viba_51516	ETH/2/2022	bovine	99.1	0	SAT2	XIV		
viba_724	ETH/2/91	cattle	84.2	0	SAT2	XIV		
viba_139	ETH/2/2007	cattle	75.6	0	SAT2	XIII		
viba_470	KEN/2/84	bovine	75.2	0	SAT2	IX		
viba_193	SUD/6/77		74.9	0	SAT2	XIII		
viba_111	MAL/1/2003	bovine	74.7	0	SAT2	I		
viba_500	NIG/2/75	bovine	74.6	0	SAT2	V		
viba_752	SA/106/59		73.9	0	SAT2	I		
viba_728	GHA/2/90	bovine	73.7	0	SAT2	V		
viba_369	UGA/51/75	bovine	73.4	0	SAT2	XII		

Virus sample name:	ETH/17/2022
Sender reference:	20799
Location of origin:	Goro, Southwest Shoa, Oromia
Country of origin:	Ethiopia
Date of collection:	31/05/2022
Host species:	cattle
Serotype:	SAT2
Topotype:	XIV
Lineage:	
Sublineage:	
Sequence length:	642
Ambiguities:	0
Material submitted for sequencing:	WRL-LFBK1
Harvest date of material:	26/04/2024
Primers:	SAT2-1C445F; SAT2-P1-1223F; SAT2VP3-AB/SAT-2B208R
Received for sequencing:	30/05/2024
Created:	30/06/2024
Last updated:	30/06/2024

VIBASys IDs: sample 55270, genome 55271, sequence viba_55272, sequencing info 55273

Most Closely Related Sequences

sequence	virus name	Host	% Id.	# Ambig.	serotype	topotype	lineage	sublineage
viba_55268	ETH/16/2022	cattle	99.8	0	SAT2	XIV		
viba_55352	ETH/66/2022	cattle	99.7	0	SAT2	XIV		
viba_55332	ETH/57/2022	cattle	99.5	0	SAT2	XIV		
viba_55344	ETH/63/2022	cattle	99.5	0	SAT2	XIV		
viba_55340	ETH/62/2022	cattle	99.5	0	SAT2	XIV		
viba_51520	ETH/3/2022	bovine	99.4	0	SAT2	XIV		
viba_51516	ETH/2/2022	bovine	99.2	0	SAT2	XIV		
viba_55348	ETH/64/2022	cattle	99.2	0	SAT2	XIV		
viba_52881	OMN/1434/2023		99.1	0	SAT2	XIV		
viba_55372	ETH/75/2022b	cattle	99.1	0	SAT2	XIV		

Most Closely Related Prototype Sequences

see <http://www.wrlfmd.org/fmdv-genome/fmd-prototype-strains>

sequence	virus name	Host	% Id.	# Ambig.	serotype	topotype	lineage	sublineage
viba_51516	ETH/2/2022	bovine	99.2	0	SAT2	XIV		
viba_724	ETH/2/91	cattle	84.2	0	SAT2	XIV		
viba_139	ETH/2/2007	cattle	75.6	0	SAT2	XIII		
viba_470	KEN/2/84	bovine	75.1	0	SAT2	IX		
viba_193	SUD/6/77		74.8	0	SAT2	XIII		
viba_500	NIG/2/75	bovine	74.7	0	SAT2	V		
viba_111	MAL/1/2003	bovine	74.7	0	SAT2	I		
viba_183	ZIM/14/2002	bovine	74.4	0	SAT2	I		
viba_752	SA/106/59		73.9	0	SAT2	I		
viba_728	GHA/2/90	bovine	73.9	0	SAT2	V		

Virus sample name:	ETH/20/2022
Sender reference:	22449
Location of origin:	Sheno, North Shoa, Oromia
Country of origin:	Ethiopia
Date of collection:	05/07/2022
Host species:	cattle
Serotype:	SAT2
Topotype:	XIV
Lineage:	
Sublineage:	
Sequence length:	642
Ambiguities:	0
Material submitted for sequencing:	WRL-LFBK1
Harvest date of material:	26/04/2024
Primers:	SAT2-1C445F; SAT2-P1-1223F; SAT2VP3-AB/SAT-2B208R
Received for sequencing:	30/05/2024
Created:	30/06/2024
Last updated:	30/06/2024
VIBASys IDs: sample 55274, genome 55275, sequence viba_55276, sequencing info 55277	

Most Closely Related Sequences

sequence	virus name	Host	% Id.	# Ambig.	serotype	topotype	lineage	sublineage
viba_55216	ETH/9/2022	cattle	99.1	0	SAT2	XIV		
viba_55288	ETH/28/2022	cattle	99.1	0	SAT2	XIV		
viba_55220	ETH/10/2022	cattle	99.1	0	SAT2	XIV		
viba_55292	ETH/29/2022	cattle	99.1	0	SAT2	XIV		
viba_55256	ETH/112/2022	cattle	98.9	1	SAT2	XIV		
viba_55240	ETH/109/2022	cattle	98.9	0	SAT2	XIV		
viba_53250	BAR/2/2022	cattle	98.9	0	SAT2	XIV		
viba_55248	ETH/110/2022	cattle	98.9	0	SAT2	XIV		
viba_55236	ETH/108/2022	cattle	98.9	0	SAT2	XIV		
viba_55232	ETH/107/2022	cattle	98.9	0	SAT2	XIV		

Most Closely Related Prototype Sequences

see <http://www.wrlfmd.org/fmdv-genome/fmd-prototype-strains>

sequence	virus name	Host	% Id.	# Ambig.	serotype	topotype	lineage	sublineage
viba_51516	ETH/2/2022	bovine	98.6	0	SAT2	XIV		
viba_724	ETH/2/91	cattle	84.2	0	SAT2	XIV		
viba_193	SUD/6/77		74.8	0	SAT2	XIII		
viba_470	KEN/2/84	bovine	74.8	0	SAT2	IX		
viba_139	ETH/2/2007	cattle	74.5	0	SAT2	XIII		
viba_752	SA/106/59		74.4	0	SAT2	I		
viba_111	MAL/1/2003	bovine	74.1	0	SAT2	I		
viba_183	ZIM/14/2002	bovine	74.1	0	SAT2	I		
viba_728	GHA/2/90	bovine	73.7	0	SAT2	V		
viba_380	RHO/1/48		73.1	0	SAT2	III		

Virus sample name:	ETH/26/2022
Sender reference:	27752
Location of origin:	Gawane, Kilelu, Afar
Country of origin:	Ethiopia
Date of collection:	09/09/2022
Host species:	cattle
Serotype:	SAT2
Topotype:	VII
Lineage:	Alx-12
Sublineage:	
Sequence length:	642
Ambiguities:	0
Material submitted for sequencing:	WRL-LFBK1
Harvest date of material:	01/05/2024
Primers:	SAT2-1C445F; SAT2-P1-1223F; SAT2VP3-AB/SAT-2B208R
Received for sequencing:	30/05/2024
Created:	30/06/2024
Last updated:	30/06/2024

VIBASys IDs: sample 55278, genome 55279, sequence viba_55280, sequencing info 55281

Most Closely Related Sequences

sequence	virus name	Host	% Id.	# Ambig.	serotype	topotype	lineage	sublineage
viba_23623	ETH/22/2014	bovine	100.0	0	SAT2	VII	Alx-12	
viba_26378	ETH/18/2015	bovine	98.4	0	SAT2	VII	Alx-12	
viba_26382	ETH/20/2015	bovine	98.1	0	SAT2	VII	Alx-12	
viba_26370	ETH/15/2015	bovine	97.7	0	SAT2	VII	Alx-12	
viba_55284	ETH/27/2022	cattle	97.5	0	SAT2	VII	Alx-12	
viba_23619	ETH/21/2014	bovine	97.5	0	SAT2	VII	Alx-12	
viba_23615	ETH/19/2014	bovine	97.5	0	SAT2	VII	Alx-12	
viba_26362	ETH/10/2015	caprine	97.4	0	SAT2	VII	Alx-12	
viba_26366	ETH/14/2015	bovine	97.4	0	SAT2	VII	Alx-12	
viba_25720	OMN/3/2015	cattle	97.2	0	SAT2	VII	Alx-12	

Most Closely Related Prototype Sequences

see <http://www.wrlfmd.org/fmdv-genome/fmd-prototype-strains>

sequence	virus name	Host	% Id.	# Ambig.	serotype	topotype	lineage	sublineage
viba_424	SAU/6/2000	bovine	90.3	1	SAT2	VII		
viba_742	CAR/8/2005	cattle	86.9	0	SAT2	VII		
viba_127	KEN/3/57		74.7	0	SAT2	IX		
viba_470	KEN/2/84	bovine	73.4	0	SAT2	IX		
viba_724	ETH/2/91	cattle	72.9	0	SAT2	XIV		
viba_248	KEN/1/84	bovine	72.3	0	SAT2	IV		
viba_111	MAL/1/2003	bovine	72.3	0	SAT2	I		
viba_374	ZAI/1/74		72.2	0	SAT2	VIII		
viba_369	UGA/51/75	bovine	72.2	0	SAT2	XII		
viba_189	RWA/1/2000		72.1	0	SAT2	VIII		

Virus sample name:	ETH/27/2022
Sender reference:	27754
Location of origin:	Gawane, Kilelu, Afar
Country of origin:	Ethiopia
Date of collection:	09/09/2022
Host species:	cattle
Serotype:	SAT2
Topotype:	VII
Lineage:	Alx-12
Sublineage:	
Sequence length:	642
Ambiguities:	0
Material submitted for sequencing:	WRL-LFBK1
Harvest date of material:	30/04/2024
Primers:	SAT2-1C445F; SAT2-P1-1223F; SAT2VP3-AB/SAT-2B208R
Received for sequencing:	30/05/2024
Created:	30/06/2024
Last updated:	30/06/2024

VIBASys IDs: sample 55282, genome 55283, sequence viba_55284, sequencing info 55285

Most Closely Related Sequences

sequence	virus name	Host	% Id.	# Ambig.	serotype	topotype	lineage	sublineage
viba_23619	ETH/21/2014	bovine	100.0	0	SAT2	VII	Alx-12	
viba_23615	ETH/19/2014	bovine	100.0	0	SAT2	VII	Alx-12	
viba_26362	ETH/10/2015	caprine	98.9	0	SAT2	VII	Alx-12	
viba_26366	ETH/14/2015	bovine	98.9	0	SAT2	VII	Alx-12	
viba_26358	ETH/7/2015	bovine	98.8	0	SAT2	VII	Alx-12	
viba_25659	ETH/2/2015	cattle	98.8	0	SAT2	VII	Alx-12	
viba_26370	ETH/15/2015	bovine	98.6	0	SAT2	VII	Alx-12	
viba_25720	OMN/3/2015	cattle	98.4	0	SAT2	VII	Alx-12	
viba_25724	OMN/4/2015	cattle	98.4	0	SAT2	VII	Alx-12	
viba_25716	OMN/2/2015	cattle	98.3	0	SAT2	VII	Alx-12	

Most Closely Related Prototype Sequences

see <http://www.wrlfmd.org/fmdv-genome/fmd-prototype-strains>

sequence	virus name	Host	% Id.	# Ambig.	serotype	topotype	lineage	sublineage
viba_424	SAU/6/2000	bovine	90.7	1	SAT2	VII		
viba_742	CAR/8/2005	cattle	87.9	0	SAT2	VII		
viba_127	KEN/3/57		74.6	0	SAT2	IX		
viba_470	KEN/2/84	bovine	74.0	0	SAT2	IX		
viba_111	MAL/1/2003	bovine	73.2	0	SAT2	I		
viba_456	ZAI/1/82	bovine	72.7	1	SAT2	X		
viba_248	KEN/1/84	bovine	72.6	0	SAT2	IV		
viba_374	ZAI/1/74		72.6	0	SAT2	VIII		
viba_724	ETH/2/91	cattle	72.6	0	SAT2	XIV		
viba_451	BOT/P3/98 VUM-29	African buffalo	72.5	1	SAT2	III		

Virus sample name:	ETH/28/2022
Sender reference:	28147
Location of origin:	Degam, North Shoa, Oromia
Country of origin:	Ethiopia
Date of collection:	14/09/2022
Host species:	cattle
Serotype:	SAT2
Topotype:	XIV
Lineage:	
Sublineage:	
Sequence length:	642
Ambiguities:	0
Material submitted for sequencing:	WRL-LFBK2
Harvest date of material:	02/05/2024
Primers:	SAT2-1C445F; SAT2-P1-1223F; SAT2VP3-AB/SAT-2B208R
Received for sequencing:	30/05/2024
Created:	30/06/2024
Last updated:	30/06/2024
VIBASys IDs: sample 55286, genome 55287, sequence viba_55288, sequencing info 55289	

Most Closely Related Sequences

sequence	virus name	Host	% Id.	# Ambig.	serotype	topotype	lineage	sublineage
viba_55292	ETH/29/2022	cattle	100.0	0	SAT2	XIV		
viba_55240	ETH/109/2022	cattle	99.8	0	SAT2	XIV		
viba_53250	BAR/2/2022	cattle	99.8	0	SAT2	XIV		
viba_55248	ETH/110/2022	cattle	99.8	0	SAT2	XIV		
viba_55236	ETH/108/2022	cattle	99.8	0	SAT2	XIV		
viba_55232	ETH/107/2022	cattle	99.8	0	SAT2	XIV		
viba_55224	ETH/105/2022	cattle	99.8	0	SAT2	XIV		
viba_55256	ETH/112/2022	cattle	99.7	1	SAT2	XIV		
viba_55228	ETH/106/2022	cattle	99.7	0	SAT2	XIV		
viba_55252	ETH/111/2022	cattle	99.7	0	SAT2	XIV		

Most Closely Related Prototype Sequences

see <http://www.wrlfmd.org/fmdv-genome/fmd-prototype-strains>

sequence	virus name	Host	% Id.	# Ambig.	serotype	topotype	lineage	sublineage
viba_51516	ETH/2/2022	bovine	98.9	0	SAT2	XIV		
viba_724	ETH/2/91	cattle	84.0	0	SAT2	XIV		
viba_470	KEN/2/84	bovine	74.8	0	SAT2	IX		
viba_111	MAL/1/2003	bovine	74.6	0	SAT2	I		
viba_139	ETH/2/2007	cattle	74.6	0	SAT2	XIII		
viba_193	SUD/6/77		74.3	0	SAT2	XIII		
viba_500	NIG/2/75	bovine	74.2	0	SAT2	V		
viba_183	ZIM/14/2002	bovine	74.1	0	SAT2	I		
viba_752	SA/106/59		74.0	0	SAT2	I		
viba_728	GHA/2/90	bovine	73.5	0	SAT2	V		

Virus sample name:	ETH/29/2022
Sender reference:	28148
Location of origin:	Degam, North Shoa, Oromia
Country of origin:	Ethiopia
Date of collection:	14/09/2022
Host species:	cattle
Serotype:	SAT2
Topotype:	XIV
Lineage:	
Sublineage:	
Sequence length:	642
Ambiguities:	0
Material submitted for sequencing:	WRL-LFBK1
Harvest date of material:	30/04/2024
Primers:	SAT2-1C445F; SAT2-P1-1223F; SAT2VP3-AB/SAT-2B208R
Received for sequencing:	30/05/2024
Created:	30/06/2024
Last updated:	30/06/2024
VIBASys IDs: sample 55290, genome 55291, sequence viba_55292, sequencing info 55293	

Most Closely Related Sequences

sequence	virus name	Host	% Id.	# Ambig.	serotype	topotype	lineage	sublineage
viba_55288	ETH/28/2022	cattle	100.0	0	SAT2	XIV		
viba_55240	ETH/109/2022	cattle	99.8	0	SAT2	XIV		
viba_53250	BAR/2/2022	cattle	99.8	0	SAT2	XIV		
viba_55248	ETH/110/2022	cattle	99.8	0	SAT2	XIV		
viba_55236	ETH/108/2022	cattle	99.8	0	SAT2	XIV		
viba_55232	ETH/107/2022	cattle	99.8	0	SAT2	XIV		
viba_55224	ETH/105/2022	cattle	99.8	0	SAT2	XIV		
viba_55256	ETH/112/2022	cattle	99.7	1	SAT2	XIV		
viba_55228	ETH/106/2022	cattle	99.7	0	SAT2	XIV		
viba_55252	ETH/111/2022	cattle	99.7	0	SAT2	XIV		

Most Closely Related Prototype Sequences

see <http://www.wrlfmd.org/fmdv-genome/fmd-prototype-strains>

sequence	virus name	Host	% Id.	# Ambig.	serotype	topotype	lineage	sublineage
viba_51516	ETH/2/2022	bovine	98.9	0	SAT2	XIV		
viba_724	ETH/2/91	cattle	84.0	0	SAT2	XIV		
viba_470	KEN/2/84	bovine	74.8	0	SAT2	IX		
viba_111	MAL/1/2003	bovine	74.6	0	SAT2	I		
viba_139	ETH/2/2007	cattle	74.6	0	SAT2	XIII		
viba_193	SUD/6/77		74.3	0	SAT2	XIII		
viba_500	NIG/2/75	bovine	74.2	0	SAT2	V		
viba_183	ZIM/14/2002	bovine	74.1	0	SAT2	I		
viba_752	SA/106/59		74.0	0	SAT2	I		
viba_728	GHA/2/90	bovine	73.5	0	SAT2	V		

Virus sample name:	ETH/31/2022
Sender reference:	28150
Location of origin:	Degam, North Shoa, Oromia
Country of origin:	Ethiopia
Date of collection:	14/09/2022
Host species:	cattle
Serotype:	SAT2
Topotype:	XIV
Lineage:	
Sublineage:	
Sequence length:	642
Ambiguities:	0
Material submitted for sequencing:	WRL-LFBK1
Harvest date of material:	30/04/2024
Primers:	SAT2-1C445F; SAT2-P1-1223F; SAT2VP3-AB/SAT-2B208R
Received for sequencing:	30/05/2024
Created:	30/06/2024
Last updated:	30/06/2024
VIBASys IDs: sample 55294, genome 55295, sequence viba_55296, sequencing info 55297	

Most Closely Related Sequences

sequence	virus name	Host	% Id.	# Ambig.	serotype	topotype	lineage	sublineage
viba_55288	ETH/28/2022	cattle	99.7	0	SAT2	XIV		
viba_55292	ETH/29/2022	cattle	99.7	0	SAT2	XIV		
viba_55300	ETH/34/2022	cattle	99.7	0	SAT2	XIV		
viba_55240	ETH/109/2022	cattle	99.5	0	SAT2	XIV		
viba_53250	BAR/2/2022	cattle	99.5	0	SAT2	XIV		
viba_55248	ETH/110/2022	cattle	99.5	0	SAT2	XIV		
viba_55236	ETH/108/2022	cattle	99.5	0	SAT2	XIV		
viba_55232	ETH/107/2022	cattle	99.5	0	SAT2	XIV		
viba_55224	ETH/105/2022	cattle	99.5	0	SAT2	XIV		
viba_55256	ETH/112/2022	cattle	99.4	1	SAT2	XIV		

Most Closely Related Prototype Sequences

see <http://www.wrlfmd.org/fmdv-genome/fmd-prototype-strains>

sequence	virus name	Host	% Id.	# Ambig.	serotype	topotype	lineage	sublineage
viba_51516	ETH/2/2022	bovine	98.6	0	SAT2	XIV		
viba_724	ETH/2/91	cattle	84.3	0	SAT2	XIV		
viba_139	ETH/2/2007	cattle	74.7	0	SAT2	XIII		
viba_111	MAL/1/2003	bovine	74.6	0	SAT2	I		
viba_470	KEN/2/84	bovine	74.5	0	SAT2	IX		
viba_193	SUD/6/77		74.2	0	SAT2	XIII		
viba_752	SA/106/59		74.0	0	SAT2	I		
viba_183	ZIM/14/2002	bovine	73.9	0	SAT2	I		
viba_451	BOT/P3/98 VUM-29	African buffalo	73.8	1	SAT2	III		
viba_728	GHA/2/90	bovine	73.5	0	SAT2	V		

Virus sample name:	ETH/34/2022
Sender reference:	28153
Location of origin:	Degam, North Shoa, Oromia
Country of origin:	Ethiopia
Date of collection:	14/09/2022
Host species:	cattle
Serotype:	SAT2
Topotype:	XIV
Lineage:	
Sublineage:	
Sequence length:	642
Ambiguities:	0
Material submitted for sequencing:	WRL-LFBK1
Harvest date of material:	30/04/2024
Primers:	SAT2-1C445F; SAT2-P1-1223F; SAT2VP3-AB/SAT-2B208R
Received for sequencing:	30/05/2024
Created:	30/06/2024
Last updated:	30/06/2024
VIBASys IDs: sample 55298, genome 55299, sequence viba_55300, sequencing info 55301	

Most Closely Related Sequences

sequence	virus name	Host	% Id.	# Ambig.	serotype	topotype	lineage	sublineage
viba_55288	ETH/28/2022	cattle	99.7	0	SAT2	XIV		
viba_55292	ETH/29/2022	cattle	99.7	0	SAT2	XIV		
viba_55296	ETH/31/2022	cattle	99.7	0	SAT2	XIV		
viba_55240	ETH/109/2022	cattle	99.5	0	SAT2	XIV		
viba_53250	BAR/2/2022	cattle	99.5	0	SAT2	XIV		
viba_55248	ETH/110/2022	cattle	99.5	0	SAT2	XIV		
viba_55236	ETH/108/2022	cattle	99.5	0	SAT2	XIV		
viba_55232	ETH/107/2022	cattle	99.5	0	SAT2	XIV		
viba_55224	ETH/105/2022	cattle	99.5	0	SAT2	XIV		
viba_55256	ETH/112/2022	cattle	99.4	1	SAT2	XIV		

Most Closely Related Prototype Sequences

see <http://www.wrlfmd.org/fmdv-genome/fmd-prototype-strains>

sequence	virus name	Host	% Id.	# Ambig.	serotype	topotype	lineage	sublineage
viba_51516	ETH/2/2022	bovine	98.9	0	SAT2	XIV		
viba_724	ETH/2/91	cattle	84.0	0	SAT2	XIV		
viba_139	ETH/2/2007	cattle	74.8	0	SAT2	XIII		
viba_470	KEN/2/84	bovine	74.5	0	SAT2	IX		
viba_183	ZIM/14/2002	bovine	74.1	0	SAT2	I		
viba_752	SA/106/59		74.0	0	SAT2	I		
viba_111	MAL/1/2003	bovine	73.9	0	SAT2	I		
viba_451	BOT/P3/98 VUM-29	African buffalo	73.9	1	SAT2	III		
viba_728	GHA/2/90	bovine	73.4	0	SAT2	V		
viba_193	SUD/6/77		73.1	0	SAT2	XIII		

Virus sample name:	ETH/43/2022
Sender reference:	28311
Location of origin:	Arero, Borana, Oromia
Country of origin:	Ethiopia
Date of collection:	05/10/2022
Host species:	cattle
Serotype:	SAT2
Topotype:	XIV
Lineage:	
Sublineage:	
Sequence length:	642
Ambiguities:	0
Material submitted for sequencing:	WRL-LFBK1
Harvest date of material:	01/05/2024
Primers:	SAT2-1C445F; SAT2-P1-1223F; SAT2VP3-AB/SAT-2B208R
Received for sequencing:	30/05/2024
Created:	30/06/2024
Last updated:	30/06/2024
VIBASys IDs: sample 55302, genome 55303, sequence viba_55304, sequencing info 55305	

Most Closely Related Sequences

sequence	virus name	Host	% Id.	# Ambig.	serotype	topotype	lineage	sublineage
viba_55308	ETH/44/2022	cattle	100.0	0	SAT2	XIV		
viba_54473	TUR/20/2023a	cattle	99.7	0	SAT2	XIV		
viba_52593	IRQ/7/2023	cattle	99.7	0	SAT2	XIV		
viba_54409	TUR/4/2023	cattle	99.7	0	SAT2	XIV		
viba_52577	IRQ/3/2023	cattle	99.7	0	SAT2	XIV		
viba_52597	IRQ/8/2023	cattle	99.7	0	SAT2	XIV		
viba_52765	JOR/23/2023	cattle	99.5	0	SAT2	XIV		
viba_52701	JOR/5/2023	cattle	99.5	0	SAT2	XIV		
viba_52693	JOR/3/2023	cattle	99.5	0	SAT2	XIV		
viba_52717	JOR/9/2023	cattle	99.5	0	SAT2	XIV		

Most Closely Related Prototype Sequences

see <http://www.wrlfmd.org/fmdv-genome/fmd-prototype-strains>

sequence	virus name	Host	% Id.	# Ambig.	serotype	topotype	lineage	sublineage
viba_51516	ETH/2/2022	bovine	98.9	0	SAT2	XIV		
viba_724	ETH/2/91	cattle	84.1	0	SAT2	XIV		
viba_139	ETH/2/2007	cattle	75.6	0	SAT2	XIII		
viba_500	NIG/2/75	bovine	75.0	0	SAT2	V		
viba_470	KEN/2/84	bovine	74.9	0	SAT2	IX		
viba_111	MAL/1/2003	bovine	74.3	0	SAT2	I		
viba_752	SA/106/59		74.1	0	SAT2	I		
viba_183	ZIM/14/2002	bovine	74.1	0	SAT2	I		
viba_451	BOT/P3/98 VUM-29	African buffalo	73.9	1	SAT2	III		
viba_728	GHA/2/90	bovine	73.7	0	SAT2	V		

Virus sample name:	ETH/44/2022
Sender reference:	28312
Location of origin:	Arero, Borana, Oromia
Country of origin:	Ethiopia
Date of collection:	05/10/2022
Host species:	cattle
Serotype:	SAT2
Topotype:	XIV
Lineage:	
Sublineage:	
Sequence length:	642
Ambiguities:	0
Material submitted for sequencing:	WRL-LFBK1
Harvest date of material:	01/05/2024
Primers:	SAT2-1C445F; SAT2-P1-1223F; SAT2VP3-AB/SAT-2B208R
Received for sequencing:	30/05/2024
Created:	30/06/2024
Last updated:	30/06/2024
VIBASys IDs: sample 55306, genome 55307, sequence viba_55308, sequencing info 55309	

Most Closely Related Sequences

sequence	virus name	Host	% Id.	# Ambig.	serotype	topotype	lineage	sublineage
viba_55304	ETH/43/2022	cattle	100.0	0	SAT2	XIV		
viba_54473	TUR/20/2023a	cattle	99.7	0	SAT2	XIV		
viba_52593	IRQ/7/2023	cattle	99.7	0	SAT2	XIV		
viba_54409	TUR/4/2023	cattle	99.7	0	SAT2	XIV		
viba_52577	IRQ/3/2023	cattle	99.7	0	SAT2	XIV		
viba_52597	IRQ/8/2023	cattle	99.7	0	SAT2	XIV		
viba_52765	JOR/23/2023	cattle	99.5	0	SAT2	XIV		
viba_52701	JOR/5/2023	cattle	99.5	0	SAT2	XIV		
viba_52693	JOR/3/2023	cattle	99.5	0	SAT2	XIV		
viba_52717	JOR/9/2023	cattle	99.5	0	SAT2	XIV		

Most Closely Related Prototype Sequences

see <http://www.wrlfmd.org/fmdv-genome/fmd-prototype-strains>

sequence	virus name	Host	% Id.	# Ambig.	serotype	topotype	lineage	sublineage
viba_51516	ETH/2/2022	bovine	98.9	0	SAT2	XIV		
viba_724	ETH/2/91	cattle	84.1	0	SAT2	XIV		
viba_139	ETH/2/2007	cattle	75.6	0	SAT2	XIII		
viba_500	NIG/2/75	bovine	75.0	0	SAT2	V		
viba_470	KEN/2/84	bovine	74.9	0	SAT2	IX		
viba_111	MAL/1/2003	bovine	74.3	0	SAT2	I		
viba_752	SA/106/59		74.1	0	SAT2	I		
viba_183	ZIM/14/2002	bovine	74.1	0	SAT2	I		
viba_451	BOT/P3/98 VUM-29	African buffalo	73.9	1	SAT2	III		
viba_728	GHA/2/90	bovine	73.7	0	SAT2	V		

Virus sample name:	ETH/47/2022
Sender reference:	28489
Location of origin:	Gidu kombolcha, East Shoa, Oromia
Country of origin:	Ethiopia
Date of collection:	22/10/2022
Host species:	cattle
Serotype:	SAT2
Topotype:	XIV
Lineage:	
Sublineage:	
Sequence length:	642
Ambiguities:	1
Material submitted for sequencing:	WRL-LFBK1
Harvest date of material:	01/05/2024
Primers:	SAT2-1C445F; SAT2-P1-1223F; SAT2VP3-AB/SAT-2B208R
Received for sequencing:	30/05/2024
Created:	30/06/2024
Last updated:	30/06/2024
VIBASys IDs: sample 55310, genome 55311, sequence viba_55312, sequencing info 55313	

Most Closely Related Sequences

sequence	virus name	Host	% Id.	# Ambig.	serotype	topotype	lineage	sublineage
viba_55324	ETH/50/2022	cattle	99.7	0	SAT2	XIV		
viba_55328	ETH/51/2022	cattle	99.7	1	SAT2	XIV		
viba_55316	ETH/48/2022	cattle	99.7	0	SAT2	XIV		
viba_55320	ETH/49/2022	cattle	99.7	0	SAT2	XIV		
viba_51516	ETH/2/2022	bovine	98.8	0	SAT2	XIV		
viba_52881	OMN/1434/2023		98.6	0	SAT2	XIV		
viba_51520	ETH/3/2022	bovine	98.6	0	SAT2	XIV		
viba_55352	ETH/66/2022	cattle	98.6	0	SAT2	XIV		
viba_55272	ETH/17/2022	cattle	98.6	0	SAT2	XIV		
viba_55268	ETH/16/2022	cattle	98.4	0	SAT2	XIV		

Most Closely Related Prototype Sequences

see <http://www.wrlfmd.org/fmdv-genome/fmd-prototype-strains>

sequence	virus name	Host	% Id.	# Ambig.	serotype	topotype	lineage	sublineage
viba_51516	ETH/2/2022	bovine	98.8	0	SAT2	XIV		
viba_724	ETH/2/91	cattle	84.2	0	SAT2	XIV		
viba_193	SUD/6/77		75.7	0	SAT2	XIII		
viba_470	KEN/2/84	bovine	74.9	0	SAT2	IX		
viba_500	NIG/2/75	bovine	74.4	0	SAT2	V		
viba_111	MAL/1/2003	bovine	74.4	0	SAT2	I		
viba_752	SA/106/59		73.8	0	SAT2	I		
viba_728	GHA/2/90	bovine	73.7	0	SAT2	V		
viba_139	ETH/2/2007	cattle	73.7	0	SAT2	XIII		
viba_380	RHO/1/48		73.6	0	SAT2	III		

Virus sample name:	ETH/48/2022
Sender reference:	28490
Location of origin:	Gidu kombolcha, East Shoa, Oromia
Country of origin:	Ethiopia
Date of collection:	22/10/2022
Host species:	cattle
Serotype:	SAT2
Topotype:	XIV
Lineage:	
Sublineage:	
Sequence length:	642
Ambiguities:	0
Material submitted for sequencing:	WRL-LFBK1
Harvest date of material:	01/05/2024
Primers:	SAT2-1C445F; SAT2-P1-1223F; SAT2VP3-AB/SAT-2B208R
Received for sequencing:	30/05/2024
Created:	30/06/2024
Last updated:	30/06/2024

VIBASys IDs: sample 55314, genome 55315, sequence viba_55316, sequencing info 55317

Most Closely Related Sequences

sequence	virus name	Host	% Id.	# Ambig.	serotype	topotype	lineage	sublineage
viba_55324	ETH/50/2022	cattle	100.0	0	SAT2	XIV		
viba_55320	ETH/49/2022	cattle	100.0	0	SAT2	XIV		
viba_55312	ETH/47/2022	cattle	99.7	1	SAT2	XIV		
viba_55328	ETH/51/2022	cattle	99.7	1	SAT2	XIV		
viba_51516	ETH/2/2022	bovine	99.1	0	SAT2	XIV		
viba_52881	OMN/1434/2023		98.9	0	SAT2	XIV		
viba_51520	ETH/3/2022	bovine	98.9	0	SAT2	XIV		
viba_55352	ETH/66/2022	cattle	98.9	0	SAT2	XIV		
viba_55272	ETH/17/2022	cattle	98.9	0	SAT2	XIV		
viba_55268	ETH/16/2022	cattle	98.8	0	SAT2	XIV		

Most Closely Related Prototype Sequences

see <http://www.wrlfmd.org/fmdv-genome/fmd-prototype-strains>

sequence	virus name	Host	% Id.	# Ambig.	serotype	topotype	lineage	sublineage
viba_51516	ETH/2/2022	bovine	99.1	0	SAT2	XIV		
viba_724	ETH/2/91	cattle	84.3	0	SAT2	XIV		
viba_193	SUD/6/77		76.0	0	SAT2	XIII		
viba_470	KEN/2/84	bovine	75.1	0	SAT2	IX		
viba_500	NIG/2/75	bovine	74.7	0	SAT2	V		
viba_111	MAL/1/2003	bovine	74.6	0	SAT2	I		
viba_728	GHA/2/90	bovine	74.0	0	SAT2	V		
viba_752	SA/106/59		73.9	0	SAT2	I		
viba_139	ETH/2/2007	cattle	73.8	0	SAT2	XIII		
viba_380	RHO/1/48		73.7	0	SAT2	III		

Virus sample name:	ETH/49/2022
Sender reference:	28491
Location of origin:	Gidu kombolcha, East Shoa, Oromia
Country of origin:	Ethiopia
Date of collection:	22/10/2022
Host species:	cattle
Serotype:	SAT2
Topotype:	XIV
Lineage:	
Sublineage:	
Sequence length:	642
Ambiguities:	0
Material submitted for sequencing:	WRL-LFBK1
Harvest date of material:	02/05/2024
Primers:	SAT2-1C445F; SAT2-P1-1223F; SAT2VP3-AB/SAT-2B208R
Received for sequencing:	30/05/2024
Created:	30/06/2024
Last updated:	30/06/2024
VIBASys IDs: sample 55318, genome 55319, sequence viba_55320, sequencing info 55321	

Most Closely Related Sequences

sequence	virus name	Host	% Id.	# Ambig.	serotype	topotype	lineage	sublineage
viba_55324	ETH/50/2022	cattle	100.0	0	SAT2	XIV		
viba_55316	ETH/48/2022	cattle	100.0	0	SAT2	XIV		
viba_55312	ETH/47/2022	cattle	99.7	1	SAT2	XIV		
viba_55328	ETH/51/2022	cattle	99.7	1	SAT2	XIV		
viba_51516	ETH/2/2022	bovine	99.1	0	SAT2	XIV		
viba_52881	OMN/1434/2023		98.9	0	SAT2	XIV		
viba_51520	ETH/3/2022	bovine	98.9	0	SAT2	XIV		
viba_55352	ETH/66/2022	cattle	98.9	0	SAT2	XIV		
viba_55272	ETH/17/2022	cattle	98.9	0	SAT2	XIV		
viba_55268	ETH/16/2022	cattle	98.8	0	SAT2	XIV		

Most Closely Related Prototype Sequences

see <http://www.wrlfmd.org/fmdv-genome/fmd-prototype-strains>

sequence	virus name	Host	% Id.	# Ambig.	serotype	topotype	lineage	sublineage
viba_51516	ETH/2/2022	bovine	99.1	0	SAT2	XIV		
viba_724	ETH/2/91	cattle	84.3	0	SAT2	XIV		
viba_193	SUD/6/77		76.0	0	SAT2	XIII		
viba_470	KEN/2/84	bovine	75.1	0	SAT2	IX		
viba_500	NIG/2/75	bovine	74.7	0	SAT2	V		
viba_111	MAL/1/2003	bovine	74.6	0	SAT2	I		
viba_728	GHA/2/90	bovine	74.0	0	SAT2	V		
viba_752	SA/106/59		73.9	0	SAT2	I		
viba_139	ETH/2/2007	cattle	73.8	0	SAT2	XIII		
viba_380	RHO/1/48		73.7	0	SAT2	III		

Virus sample name:	ETH/50/2022
Sender reference:	28492
Location of origin:	Gidu kombolcha, East Shoa, Oromia
Country of origin:	Ethiopia
Date of collection:	22/10/2022
Host species:	cattle
Serotype:	SAT2
Topotype:	XIV
Lineage:	
Sublineage:	
Sequence length:	642
Ambiguities:	0
Material submitted for sequencing:	WRL-LFBK1
Harvest date of material:	01/05/2024
Primers:	SAT2-1C445F; SAT2-P1-1223F; SAT2VP3-AB/SAT-2B208R
Received for sequencing:	30/05/2024
Created:	30/06/2024
Last updated:	30/06/2024
VIBASys IDs: sample 55322, genome 55323, sequence viba_55324, sequencing info 55325	

Most Closely Related Sequences

sequence	virus name	Host	% Id.	# Ambig.	serotype	topotype	lineage	sublineage
viba_55316	ETH/48/2022	cattle	100.0	0	SAT2	XIV		
viba_55320	ETH/49/2022	cattle	100.0	0	SAT2	XIV		
viba_55312	ETH/47/2022	cattle	99.7	1	SAT2	XIV		
viba_55328	ETH/51/2022	cattle	99.7	1	SAT2	XIV		
viba_51516	ETH/2/2022	bovine	99.1	0	SAT2	XIV		
viba_52881	OMN/1434/2023		98.9	0	SAT2	XIV		
viba_51520	ETH/3/2022	bovine	98.9	0	SAT2	XIV		
viba_55352	ETH/66/2022	cattle	98.9	0	SAT2	XIV		
viba_55272	ETH/17/2022	cattle	98.9	0	SAT2	XIV		
viba_55268	ETH/16/2022	cattle	98.8	0	SAT2	XIV		

Most Closely Related Prototype Sequences

see <http://www.wrlfmd.org/fmdv-genome/fmd-prototype-strains>

sequence	virus name	Host	% Id.	# Ambig.	serotype	topotype	lineage	sublineage
viba_51516	ETH/2/2022	bovine	99.1	0	SAT2	XIV		
viba_724	ETH/2/91	cattle	84.3	0	SAT2	XIV		
viba_193	SUD/6/77		76.0	0	SAT2	XIII		
viba_470	KEN/2/84	bovine	75.1	0	SAT2	IX		
viba_500	NIG/2/75	bovine	74.7	0	SAT2	V		
viba_111	MAL/1/2003	bovine	74.6	0	SAT2	I		
viba_728	GHA/2/90	bovine	74.0	0	SAT2	V		
viba_752	SA/106/59		73.9	0	SAT2	I		
viba_139	ETH/2/2007	cattle	73.8	0	SAT2	XIII		
viba_380	RHO/1/48		73.7	0	SAT2	III		

Virus sample name:	ETH/51/2022
Sender reference:	28493
Location of origin:	Gidu kombolcha, East Shoa, Oromia
Country of origin:	Ethiopia
Date of collection:	22/10/2022
Host species:	cattle
Serotype:	SAT2
Topotype:	XIV
Lineage:	
Sublineage:	
Sequence length:	642
Ambiguities:	1
Material submitted for sequencing:	WRL-LFBK1
Harvest date of material:	08/05/2024
Primers:	SAT2-1C445F; SAT2-P1-1223F; SAT2VP3-AB/SAT-2B208R
Received for sequencing:	30/05/2024
Created:	30/06/2024
Last updated:	30/06/2024
VIBASys IDs: sample 55326, genome 55327, sequence viba_55328, sequencing info 55329	

Most Closely Related Sequences

sequence	virus name	Host	% Id.	# Ambig.	serotype	topotype	lineage	sublineage
viba_55312	ETH/47/2022	cattle	99.7	1	SAT2	XIV		
viba_55324	ETH/50/2022	cattle	99.7	0	SAT2	XIV		
viba_55316	ETH/48/2022	cattle	99.7	0	SAT2	XIV		
viba_55320	ETH/49/2022	cattle	99.7	0	SAT2	XIV		
viba_51516	ETH/2/2022	bovine	98.8	0	SAT2	XIV		
viba_52881	OMN/1434/2023		98.6	0	SAT2	XIV		
viba_51520	ETH/3/2022	bovine	98.6	0	SAT2	XIV		
viba_55352	ETH/66/2022	cattle	98.6	0	SAT2	XIV		
viba_55272	ETH/17/2022	cattle	98.6	0	SAT2	XIV		
viba_55268	ETH/16/2022	cattle	98.4	0	SAT2	XIV		

Most Closely Related Prototype Sequences

see <http://www.wrlfmd.org/fmdv-genome/fmd-prototype-strains>

sequence	virus name	Host	% Id.	# Ambig.	serotype	topotype	lineage	sublineage
viba_51516	ETH/2/2022	bovine	98.8	0	SAT2	XIV		
viba_724	ETH/2/91	cattle	84.2	0	SAT2	XIV		
viba_193	SUD/6/77		75.9	0	SAT2	XIII		
viba_470	KEN/2/84	bovine	75.1	0	SAT2	IX		
viba_500	NIG/2/75	bovine	74.4	0	SAT2	V		
viba_111	MAL/1/2003	bovine	74.4	0	SAT2	I		
viba_752	SA/106/59		73.8	0	SAT2	I		
viba_139	ETH/2/2007	cattle	73.8	0	SAT2	XIII		
viba_728	GHA/2/90	bovine	73.6	0	SAT2	V		
viba_380	RHO/1/48		73.6	0	SAT2	III		

Virus sample name:	ETH/57/2022
Sender reference:	28500
Location of origin:	Alemtena, East Shoa, Oromia
Country of origin:	Ethiopia
Date of collection:	22/10/2022
Host species:	cattle
Serotype:	SAT2
Topotype:	XIV
Lineage:	
Sublineage:	
Sequence length:	642
Ambiguities:	0
Material submitted for sequencing:	WRL-LFBK1
Harvest date of material:	08/05/2024
Primers:	SAT2-1C445F; SAT2-P1-1223F; SAT2VP3-AB/SAT-2B208R
Received for sequencing:	30/05/2024
Created:	30/06/2024
Last updated:	30/06/2024

VIBASys IDs: sample 55330, genome 55331, sequence viba_55332, sequencing info 55333

Most Closely Related Sequences

sequence	virus name	Host	% Id.	# Ambig.	serotype	topotype	lineage	sublineage
viba_55344	ETH/63/2022	cattle	100.0	0	SAT2	XIV		
viba_55340	ETH/62/2022	cattle	100.0	0	SAT2	XIV		
viba_55352	ETH/66/2022	cattle	99.8	0	SAT2	XIV		
viba_55272	ETH/17/2022	cattle	99.5	0	SAT2	XIV		
viba_55268	ETH/16/2022	cattle	99.4	0	SAT2	XIV		
viba_55348	ETH/64/2022	cattle	99.4	0	SAT2	XIV		
viba_51520	ETH/3/2022	bovine	99.2	0	SAT2	XIV		
viba_55372	ETH/75/2022b	cattle	99.2	0	SAT2	XIV		
viba_51516	ETH/2/2022	bovine	99.1	0	SAT2	XIV		
viba_52881	OMN/1434/2023		98.9	0	SAT2	XIV		

Most Closely Related Prototype Sequences

see <http://www.wrlfmd.org/fmdv-genome/fmd-prototype-strains>

sequence	virus name	Host	% Id.	# Ambig.	serotype	topotype	lineage	sublineage
viba_51516	ETH/2/2022	bovine	99.1	0	SAT2	XIV		
viba_724	ETH/2/91	cattle	84.3	0	SAT2	XIV		
viba_139	ETH/2/2007	cattle	75.8	0	SAT2	XIII		
viba_111	MAL/1/2003	bovine	75.2	0	SAT2	I		
viba_470	KEN/2/84	bovine	75.1	0	SAT2	IX		
viba_500	NIG/2/75	bovine	74.9	0	SAT2	V		
viba_193	SUD/6/77		74.8	0	SAT2	XIII		
viba_183	ZIM/14/2002	bovine	74.5	0	SAT2	I		
viba_752	SA/106/59		74.1	0	SAT2	I		
viba_728	GHA/2/90	bovine	73.7	0	SAT2	V		

Virus sample name:	ETH/61/2022
Sender reference:	28503
Location of origin:	Alemtena, East Shoa, Oromia
Country of origin:	Ethiopia
Date of collection:	22/10/2022
Host species:	cattle
Serotype:	SAT2
Topotype:	XIV
Lineage:	
Sublineage:	
Sequence length:	642
Ambiguities:	0
Material submitted for sequencing:	WRL-LFBK1
Harvest date of material:	08/05/2024
Primers:	SAT2-1C445F; SAT2-P1-1223F; SAT2VP3-AB/SAT-2B208R
Received for sequencing:	30/05/2024
Created:	30/06/2024
Last updated:	30/06/2024
VIBASys IDs: sample 55334, genome 55335, sequence viba_55336, sequencing info 55337	

Most Closely Related Sequences

sequence	virus name	Host	% Id.	# Ambig.	serotype	topotype	lineage	sublineage
viba_55356	ETH/77/2022	cattle	100.0	0	SAT2	XIV		
viba_55368	ETH/75/2022a	cattle	100.0	0	SAT2	XIV		
viba_55288	ETH/28/2022	cattle	98.6	0	SAT2	XIV		
viba_55292	ETH/29/2022	cattle	98.6	0	SAT2	XIV		
viba_55240	ETH/109/2022	cattle	98.4	0	SAT2	XIV		
viba_55380	ETH/2/2023	cattle	98.4	0	SAT2	XIV		
viba_53250	BAR/2/2022	cattle	98.4	0	SAT2	XIV		
viba_55376	ETH/1/2023	cattle	98.4	0	SAT2	XIV		
viba_55388	ETH/4/2023	cattle	98.4	0	SAT2	XIV		
viba_55248	ETH/110/2022	cattle	98.4	0	SAT2	XIV		

Most Closely Related Prototype Sequences

see <http://www.wrlfmd.org/fmdv-genome/fmd-prototype-strains>

sequence	virus name	Host	% Id.	# Ambig.	serotype	topotype	lineage	sublineage
viba_51516	ETH/2/2022	bovine	97.8	0	SAT2	XIV		
viba_724	ETH/2/91	cattle	83.7	0	SAT2	XIV		
viba_500	NIG/2/75	bovine	74.5	0	SAT2	V		
viba_193	SUD/6/77		74.4	0	SAT2	XIII		
viba_139	ETH/2/2007	cattle	74.3	0	SAT2	XIII		
viba_728	GHA/2/90	bovine	74.0	0	SAT2	V		
viba_470	KEN/2/84	bovine	73.9	0	SAT2	IX		
viba_752	SA/106/59		73.7	0	SAT2	I		
viba_111	MAL/1/2003	bovine	73.6	0	SAT2	I		
viba_380	RHO/1/48		72.7	0	SAT2	III		

Virus sample name:	ETH/62/2022
Sender reference:	28505
Location of origin:	Alemtena, East Shoa, Oromia
Country of origin:	Ethiopia
Date of collection:	22/10/2022
Host species:	cattle
Serotype:	SAT2
Topotype:	XIV
Lineage:	
Sublineage:	
Sequence length:	642
Ambiguities:	0
Material submitted for sequencing:	WRL-LFBK1
Harvest date of material:	08/05/2024
Primers:	SAT2-1C445F; SAT2-P1-1223F; SAT2VP3-AB/SAT-2B208R
Received for sequencing:	30/05/2024
Created:	30/06/2024
Last updated:	30/06/2024

VIBASys IDs: sample 55338, genome 55339, sequence viba_55340, sequencing info 55341

Most Closely Related Sequences

sequence	virus name	Host	% Id.	# Ambig.	serotype	topotype	lineage	sublineage
viba_55332	ETH/57/2022	cattle	100.0	0	SAT2	XIV		
viba_55344	ETH/63/2022	cattle	100.0	0	SAT2	XIV		
viba_55352	ETH/66/2022	cattle	99.8	0	SAT2	XIV		
viba_55272	ETH/17/2022	cattle	99.5	0	SAT2	XIV		
viba_55268	ETH/16/2022	cattle	99.4	0	SAT2	XIV		
viba_55348	ETH/64/2022	cattle	99.4	0	SAT2	XIV		
viba_51520	ETH/3/2022	bovine	99.2	0	SAT2	XIV		
viba_55372	ETH/75/2022b	cattle	99.2	0	SAT2	XIV		
viba_51516	ETH/2/2022	bovine	99.1	0	SAT2	XIV		
viba_52881	OMN/1434/2023		98.9	0	SAT2	XIV		

Most Closely Related Prototype Sequences

see <http://www.wrlfmd.org/fmdv-genome/fmd-prototype-strains>

sequence	virus name	Host	% Id.	# Ambig.	serotype	topotype	lineage	sublineage
viba_51516	ETH/2/2022	bovine	99.1	0	SAT2	XIV		
viba_724	ETH/2/91	cattle	84.3	0	SAT2	XIV		
viba_139	ETH/2/2007	cattle	75.8	0	SAT2	XIII		
viba_111	MAL/1/2003	bovine	75.2	0	SAT2	I		
viba_470	KEN/2/84	bovine	75.1	0	SAT2	IX		
viba_500	NIG/2/75	bovine	74.9	0	SAT2	V		
viba_193	SUD/6/77		74.8	0	SAT2	XIII		
viba_183	ZIM/14/2002	bovine	74.5	0	SAT2	I		
viba_752	SA/106/59		74.1	0	SAT2	I		
viba_728	GHA/2/90	bovine	73.7	0	SAT2	V		

Virus sample name:	ETH/63/2022
Sender reference:	28507
Location of origin:	Alemtena, East Shoa, Oromia
Country of origin:	Ethiopia
Date of collection:	22/10/2022
Host species:	cattle
Serotype:	SAT2
Topotype:	XIV
Lineage:	
Sublineage:	
Sequence length:	642
Ambiguities:	0
Material submitted for sequencing:	WRL-LFBK1
Harvest date of material:	08/05/2024
Primers:	SAT2-1C445F; SAT2-P1-1223F; SAT2VP3-AB/SAT-2B208R
Received for sequencing:	30/05/2024
Created:	30/06/2024
Last updated:	30/06/2024
VIBASys IDs: sample 55342, genome 55343, sequence viba_55344, sequencing info 55345	

Most Closely Related Sequences

sequence	virus name	Host	% Id.	# Ambig.	serotype	topotype	lineage	sublineage
viba_55332	ETH/57/2022	cattle	100.0	0	SAT2	XIV		
viba_55340	ETH/62/2022	cattle	100.0	0	SAT2	XIV		
viba_55352	ETH/66/2022	cattle	99.8	0	SAT2	XIV		
viba_55272	ETH/17/2022	cattle	99.5	0	SAT2	XIV		
viba_55268	ETH/16/2022	cattle	99.4	0	SAT2	XIV		
viba_55348	ETH/64/2022	cattle	99.4	0	SAT2	XIV		
viba_51520	ETH/3/2022	bovine	99.2	0	SAT2	XIV		
viba_55372	ETH/75/2022b	cattle	99.2	0	SAT2	XIV		
viba_51516	ETH/2/2022	bovine	99.1	0	SAT2	XIV		
viba_52881	OMN/1434/2023		98.9	0	SAT2	XIV		

Most Closely Related Prototype Sequences

see <http://www.wrlfmd.org/fmdv-genome/fmd-prototype-strains>

sequence	virus name	Host	% Id.	# Ambig.	serotype	topotype	lineage	sublineage
viba_51516	ETH/2/2022	bovine	99.1	0	SAT2	XIV		
viba_724	ETH/2/91	cattle	84.3	0	SAT2	XIV		
viba_139	ETH/2/2007	cattle	75.8	0	SAT2	XIII		
viba_111	MAL/1/2003	bovine	75.2	0	SAT2	I		
viba_470	KEN/2/84	bovine	75.1	0	SAT2	IX		
viba_500	NIG/2/75	bovine	74.9	0	SAT2	V		
viba_193	SUD/6/77		74.8	0	SAT2	XIII		
viba_183	ZIM/14/2002	bovine	74.5	0	SAT2	I		
viba_752	SA/106/59		74.1	0	SAT2	I		
viba_728	GHA/2/90	bovine	73.7	0	SAT2	V		

Virus sample name:	ETH/64/2022
Sender reference:	28509
Location of origin:	Alemtena, East Shoa, Oromia
Country of origin:	Ethiopia
Date of collection:	22/10/2022
Host species:	cattle
Serotype:	SAT2
Topotype:	XIV
Lineage:	
Sublineage:	
Sequence length:	642
Ambiguities:	0
Material submitted for sequencing:	WRL-LFBK1
Harvest date of material:	08/05/2024
Primers:	SAT2-1C445F; SAT2-P1-1223F; SAT2VP3-AB/SAT-2B208R
Received for sequencing:	30/05/2024
Created:	30/06/2024
Last updated:	30/06/2024
VIBASys IDs: sample 55346, genome 55347, sequence viba_55348, sequencing info 55349	

Most Closely Related Sequences

sequence	virus name	Host	% Id.	# Ambig.	serotype	topotype	lineage	sublineage
viba_55372	ETH/75/2022b	cattle	99.8	0	SAT2	XIV		
viba_55352	ETH/66/2022	cattle	99.5	0	SAT2	XIV		
viba_55332	ETH/57/2022	cattle	99.4	0	SAT2	XIV		
viba_55344	ETH/63/2022	cattle	99.4	0	SAT2	XIV		
viba_55340	ETH/62/2022	cattle	99.4	0	SAT2	XIV		
viba_55272	ETH/17/2022	cattle	99.2	0	SAT2	XIV		
viba_55268	ETH/16/2022	cattle	99.1	0	SAT2	XIV		
viba_51520	ETH/3/2022	bovine	98.9	0	SAT2	XIV		
viba_51516	ETH/2/2022	bovine	98.8	0	SAT2	XIV		
viba_55264	ETH/13/2022	cattle	98.6	0	SAT2	XIV		

Most Closely Related Prototype Sequences

see <http://www.wrlfmd.org/fmdv-genome/fmd-prototype-strains>

sequence	virus name	Host	% Id.	# Ambig.	serotype	topotype	lineage	sublineage
viba_51516	ETH/2/2022	bovine	98.8	0	SAT2	XIV		
viba_724	ETH/2/91	cattle	84.2	0	SAT2	XIV		
viba_139	ETH/2/2007	cattle	75.6	0	SAT2	XIII		
viba_470	KEN/2/84	bovine	75.2	0	SAT2	IX		
viba_111	MAL/1/2003	bovine	75.1	0	SAT2	I		
viba_193	SUD/6/77		74.7	0	SAT2	XIII		
viba_500	NIG/2/75	bovine	74.6	0	SAT2	V		
viba_752	SA/106/59		74.4	0	SAT2	I		
viba_183	ZIM/14/2002	bovine	74.1	0	SAT2	I		
viba_728	GHA/2/90	bovine	73.9	0	SAT2	V		

Virus sample name:	ETH/66/2022
Sender reference:	28512
Location of origin:	Alemtena, East Shoa, Oromia
Country of origin:	Ethiopia
Date of collection:	22/10/2022
Host species:	cattle
Serotype:	SAT2
Topotype:	XIV
Lineage:	
Sublineage:	
Sequence length:	642
Ambiguities:	0
Material submitted for sequencing:	WRL-LFBK1
Harvest date of material:	09/05/2024
Primers:	SAT2-1C445F; SAT2-P1-1223F; SAT2VP3-AB/SAT-2B208R
Received for sequencing:	30/05/2024
Created:	30/06/2024
Last updated:	30/06/2024

VIBASys IDs: sample 55350, genome 55351, sequence viba_55352, sequencing info 55353

Most Closely Related Sequences

sequence	virus name	Host	% Id.	# Ambig.	serotype	topotype	lineage	sublineage
viba_55332	ETH/57/2022	cattle	99.8	0	SAT2	XIV		
viba_55344	ETH/63/2022	cattle	99.8	0	SAT2	XIV		
viba_55340	ETH/62/2022	cattle	99.8	0	SAT2	XIV		
viba_55272	ETH/17/2022	cattle	99.7	0	SAT2	XIV		
viba_55268	ETH/16/2022	cattle	99.5	0	SAT2	XIV		
viba_55348	ETH/64/2022	cattle	99.5	0	SAT2	XIV		
viba_51520	ETH/3/2022	bovine	99.4	0	SAT2	XIV		
viba_55372	ETH/75/2022b	cattle	99.4	0	SAT2	XIV		
viba_51516	ETH/2/2022	bovine	99.2	0	SAT2	XIV		
viba_52881	OMN/1434/2023		99.1	0	SAT2	XIV		

Most Closely Related Prototype Sequences

see <http://www.wrlfmd.org/fmdv-genome/fmd-prototype-strains>

sequence	virus name	Host	% Id.	# Ambig.	serotype	topotype	lineage	sublineage
viba_51516	ETH/2/2022	bovine	99.2	0	SAT2	XIV		
viba_724	ETH/2/91	cattle	84.2	0	SAT2	XIV		
viba_139	ETH/2/2007	cattle	75.6	0	SAT2	XIII		
viba_470	KEN/2/84	bovine	75.2	0	SAT2	IX		
viba_111	MAL/1/2003	bovine	75.0	0	SAT2	I		
viba_193	SUD/6/77		75.0	0	SAT2	XIII		
viba_500	NIG/2/75	bovine	74.7	0	SAT2	V		
viba_183	ZIM/14/2002	bovine	74.4	0	SAT2	I		
viba_752	SA/106/59		73.9	0	SAT2	I		
viba_728	GHA/2/90	bovine	73.9	0	SAT2	V		

Virus sample name:	ETH/77/2022
Sender reference:	28520
Location of origin:	Negele Arsi, East Shoa, Oromia
Country of origin:	Ethiopia
Date of collection:	24/10/2022
Host species:	cattle
Serotype:	SAT2
Topotype:	XIV
Lineage:	
Sublineage:	
Sequence length:	642
Ambiguities:	0
Material submitted for sequencing:	WRL-LFBK1
Harvest date of material:	09/05/2024
Primers:	SAT2-1C445F; SAT2-P1-1223F; SAT2VP3-AB/SAT-2B208R
Received for sequencing:	30/05/2024
Created:	30/06/2024
Last updated:	30/06/2024
VIBASys IDs: sample 55354, genome 55355, sequence viba_55356, sequencing info 55357	

Most Closely Related Sequences

sequence	virus name	Host	% Id.	# Ambig.	serotype	topotype	lineage	sublineage
viba_55368	ETH/75/2022a	cattle	100.0	0	SAT2	XIV		
viba_55336	ETH/61/2022	cattle	100.0	0	SAT2	XIV		
viba_55288	ETH/28/2022	cattle	98.6	0	SAT2	XIV		
viba_55292	ETH/29/2022	cattle	98.6	0	SAT2	XIV		
viba_55240	ETH/109/2022	cattle	98.4	0	SAT2	XIV		
viba_55380	ETH/2/2023	cattle	98.4	0	SAT2	XIV		
viba_53250	BAR/2/2022	cattle	98.4	0	SAT2	XIV		
viba_55376	ETH/1/2023	cattle	98.4	0	SAT2	XIV		
viba_55388	ETH/4/2023	cattle	98.4	0	SAT2	XIV		
viba_55248	ETH/110/2022	cattle	98.4	0	SAT2	XIV		

Most Closely Related Prototype Sequences

see <http://www.wrlfmd.org/fmdv-genome/fmd-prototype-strains>

sequence	virus name	Host	% Id.	# Ambig.	serotype	topotype	lineage	sublineage
viba_51516	ETH/2/2022	bovine	97.8	0	SAT2	XIV		
viba_724	ETH/2/91	cattle	83.7	0	SAT2	XIV		
viba_500	NIG/2/75	bovine	74.5	0	SAT2	V		
viba_193	SUD/6/77		74.4	0	SAT2	XIII		
viba_139	ETH/2/2007	cattle	74.3	0	SAT2	XIII		
viba_728	GHA/2/90	bovine	74.0	0	SAT2	V		
viba_470	KEN/2/84	bovine	73.9	0	SAT2	IX		
viba_752	SA/106/59		73.7	0	SAT2	I		
viba_111	MAL/1/2003	bovine	73.6	0	SAT2	I		
viba_380	RHO/1/48		72.7	0	SAT2	III		

Virus sample name:	ETH/84/2022
Sender reference:	14341
Location of origin:	Shashamene, West Arsi, Oromia
Country of origin:	Ethiopia
Date of collection:	06/11/2022
Host species:	cattle
Serotype:	SAT2
Topotype:	XIV
Lineage:	
Sublineage:	
Sequence length:	642
Ambiguities:	0
Material submitted for sequencing:	WRL-LFBK1
Harvest date of material:	10/05/2024
Primers:	SAT2-1C445F; SAT2-P1-1223F; SAT2VP3-AB/SAT-2B208R
Received for sequencing:	30/05/2024
Created:	30/06/2024
Last updated:	30/06/2024
VIBASys IDs: sample 55358, genome 55359, sequence viba_55360, sequencing info 55361	

Most Closely Related Sequences

sequence	virus name	Host	% Id.	# Ambig.	serotype	topotype	lineage	sublineage
viba_55380	ETH/2/2023	cattle	99.7	0	SAT2	XIV		
viba_55376	ETH/1/2023	cattle	99.7	0	SAT2	XIV		
viba_55388	ETH/4/2023	cattle	99.7	0	SAT2	XIV		
viba_55384	ETH/3/2023	cattle	99.7	0	SAT2	XIV		
viba_55356	ETH/77/2022	cattle	98.4	0	SAT2	XIV		
viba_55368	ETH/75/2022a	cattle	98.4	0	SAT2	XIV		
viba_55336	ETH/61/2022	cattle	98.4	0	SAT2	XIV		
viba_55216	ETH/9/2022	cattle	98.3	0	SAT2	XIV		
viba_52881	OMN/1434/2023		98.3	0	SAT2	XIV		
viba_55288	ETH/28/2022	cattle	98.3	0	SAT2	XIV		

Most Closely Related Prototype Sequences

see <http://www.wrlfmd.org/fmdv-genome/fmd-prototype-strains>

sequence	virus name	Host	% Id.	# Ambig.	serotype	topotype	lineage	sublineage
viba_51516	ETH/2/2022	bovine	97.8	0	SAT2	XIV		
viba_724	ETH/2/91	cattle	84.2	0	SAT2	XIV		
viba_470	KEN/2/84	bovine	75.0	0	SAT2	IX		
viba_139	ETH/2/2007	cattle	74.5	0	SAT2	XIII		
viba_111	MAL/1/2003	bovine	74.1	0	SAT2	I		
viba_752	SA/106/59		73.9	0	SAT2	I		
viba_193	SUD/6/77		73.9	0	SAT2	XIII		
viba_183	ZIM/14/2002	bovine	73.9	0	SAT2	I		
viba_500	NIG/2/75	bovine	73.7	0	SAT2	V		
viba_380	RHO/1/48		73.4	0	SAT2	III		

Virus sample name:	ETH/90/2022
Sender reference:	28905
Location of origin:	Seden Sodo, Southwest Shoa, Oromia
Country of origin:	Ethiopia
Date of collection:	14/11/2022
Host species:	cattle
Serotype:	SAT2
Topotype:	XIV
Lineage:	
Sublineage:	
Sequence length:	642
Ambiguities:	0
Material submitted for sequencing:	WRL-LFBK1
Harvest date of material:	10/05/2024
Primers:	SAT2-1C445F; SAT2-P1-1223F; SAT2VP3-AB/SAT-2B208R
Received for sequencing:	30/05/2024
Created:	30/06/2024
Last updated:	30/06/2024
VIBASys IDs: sample 55362, genome 55363, sequence viba_55364, sequencing info 55365	

Most Closely Related Sequences

sequence	virus name	Host	% Id.	# Ambig.	serotype	topotype	lineage	sublineage
viba_55264	ETH/13/2022	cattle	99.2	0	SAT2	XIV		
viba_55244	ETH/11/2022	cattle	99.2	0	SAT2	XIV		
viba_55260	ETH/12/2022	cattle	99.2	0	SAT2	XIV		
viba_51516	ETH/2/2022	bovine	98.4	0	SAT2	XIV		
viba_54473	TUR/20/2023a	cattle	98.3	0	SAT2	XIV		
viba_51520	ETH/3/2022	bovine	98.3	0	SAT2	XIV		
viba_54409	TUR/4/2023	cattle	98.3	0	SAT2	XIV		
viba_55324	ETH/50/2022	cattle	98.1	0	SAT2	XIV		
viba_54433	TUR/10/2023	cattle	98.1	0	SAT2	XIV		
viba_52657	TUR/79/2023	cattle	98.1	0	SAT2	XIV		

Most Closely Related Prototype Sequences

see <http://www.wrlfmd.org/fmdv-genome/fmd-prototype-strains>

sequence	virus name	Host	% Id.	# Ambig.	serotype	topotype	lineage	sublineage
viba_51516	ETH/2/2022	bovine	98.4	0	SAT2	XIV		
viba_724	ETH/2/91	cattle	84.0	0	SAT2	XIV		
viba_139	ETH/2/2007	cattle	75.2	0	SAT2	XIII		
viba_470	KEN/2/84	bovine	75.0	0	SAT2	IX		
viba_193	SUD/6/77		74.7	0	SAT2	XIII		
viba_111	MAL/1/2003	bovine	73.9	0	SAT2	I		
viba_374	ZAI/1/74		73.9	0	SAT2	VIII		
viba_752	SA/106/59		73.8	0	SAT2	I		
viba_500	NIG/2/75	bovine	73.8	0	SAT2	V		
viba_248	KEN/1/84	bovine	73.7	0	SAT2	IV		

Virus sample name:	ETH/105/2022
Sender reference:	31343
Location of origin:	Sebeta, Southwest Shoa, Oromia
Country of origin:	Ethiopia
Date of collection:	08/12/2022
Host species:	cattle
Serotype:	SAT2
Topotype:	XIV
Lineage:	
Sublineage:	
Sequence length:	642
Ambiguities:	0
Material submitted for sequencing:	WRL-LFBK1
Harvest date of material:	17/05/2024
Primers:	SAT2-1C445F; SAT2-P1-1223F; SAT2VP3-AB/SAT-2B208R
Received for sequencing:	30/05/2024
Created:	30/06/2024
Last updated:	30/06/2024
VIBASys IDs: sample 55222, genome 55223, sequence viba_55224, sequencing info 55225	

Most Closely Related Sequences

sequence	virus name	Host	% Id.	# Ambig.	serotype	topotype	lineage	sublineage
viba_55240	ETH/109/2022	cattle	100.0	0	SAT2	XIV		
viba_55248	ETH/110/2022	cattle	100.0	0	SAT2	XIV		
viba_55236	ETH/108/2022	cattle	100.0	0	SAT2	XIV		
viba_55232	ETH/107/2022	cattle	100.0	0	SAT2	XIV		
viba_55256	ETH/112/2022	cattle	99.8	1	SAT2	XIV		
viba_55228	ETH/106/2022	cattle	99.8	0	SAT2	XIV		
viba_55252	ETH/111/2022	cattle	99.8	0	SAT2	XIV		
viba_55288	ETH/28/2022	cattle	99.8	0	SAT2	XIV		
viba_55292	ETH/29/2022	cattle	99.8	0	SAT2	XIV		
viba_53250	BAR/2/2022	cattle	99.7	0	SAT2	XIV		

Most Closely Related Prototype Sequences

see <http://www.wrlfmd.org/fmdv-genome/fmd-prototype-strains>

sequence	virus name	Host	% Id.	# Ambig.	serotype	topotype	lineage	sublineage
viba_51516	ETH/2/2022	bovine	98.8	0	SAT2	XIV		
viba_724	ETH/2/91	cattle	83.9	0	SAT2	XIV		
viba_470	KEN/2/84	bovine	74.7	0	SAT2	IX		
viba_139	ETH/2/2007	cattle	74.6	0	SAT2	XIII		
viba_111	MAL/1/2003	bovine	74.4	0	SAT2	I		
viba_193	SUD/6/77		74.2	0	SAT2	XIII		
viba_500	NIG/2/75	bovine	74.0	0	SAT2	V		
viba_752	SA/106/59		73.9	0	SAT2	I		
viba_183	ZIM/14/2002	bovine	73.9	0	SAT2	I		
viba_728	GHA/2/90	bovine	73.5	0	SAT2	V		

Virus sample name:	ETH/106/2022
Sender reference:	31344
Location of origin:	Sebeta, Southwest Shoa, Oromia
Country of origin:	Ethiopia
Date of collection:	08/12/2022
Host species:	cattle
Serotype:	SAT2
Topotype:	XIV
Lineage:	
Sublineage:	
Sequence length:	642
Ambiguities:	0
Material submitted for sequencing:	WRL-LFBK1
Harvest date of material:	17/05/2024
Primers:	SAT2-1C445F; SAT2-P1-1223F; SAT2VP3-AB/SAT-2B208R
Received for sequencing:	30/05/2024
Created:	30/06/2024
Last updated:	30/06/2024
VIBASys IDs: sample 55226, genome 55227, sequence viba_55228, sequencing info 55229	

Most Closely Related Sequences

sequence	virus name	Host	% Id.	# Ambig.	serotype	topotype	lineage	sublineage
viba_55240	ETH/109/2022	cattle	99.8	0	SAT2	XIV		
viba_55248	ETH/110/2022	cattle	99.8	0	SAT2	XIV		
viba_55236	ETH/108/2022	cattle	99.8	0	SAT2	XIV		
viba_55232	ETH/107/2022	cattle	99.8	0	SAT2	XIV		
viba_55224	ETH/105/2022	cattle	99.8	0	SAT2	XIV		
viba_55256	ETH/112/2022	cattle	99.7	1	SAT2	XIV		
viba_55252	ETH/111/2022	cattle	99.7	0	SAT2	XIV		
viba_55288	ETH/28/2022	cattle	99.7	0	SAT2	XIV		
viba_55292	ETH/29/2022	cattle	99.7	0	SAT2	XIV		
viba_53250	BAR/2/2022	cattle	99.5	0	SAT2	XIV		

Most Closely Related Prototype Sequences

see <http://www.wrlfmd.org/fmdv-genome/fmd-prototype-strains>

sequence	virus name	Host	% Id.	# Ambig.	serotype	topotype	lineage	sublineage
viba_51516	ETH/2/2022	bovine	98.6	0	SAT2	XIV		
viba_724	ETH/2/91	cattle	83.7	0	SAT2	XIV		
viba_139	ETH/2/2007	cattle	74.6	0	SAT2	XIII		
viba_470	KEN/2/84	bovine	74.5	0	SAT2	IX		
viba_111	MAL/1/2003	bovine	74.3	0	SAT2	I		
viba_500	NIG/2/75	bovine	74.2	0	SAT2	V		
viba_193	SUD/6/77		74.0	0	SAT2	XIII		
viba_752	SA/106/59		73.9	0	SAT2	I		
viba_183	ZIM/14/2002	bovine	73.9	0	SAT2	I		
viba_728	GHA/2/90	bovine	73.7	0	SAT2	V		

Virus sample name:	ETH/107/2022
Sender reference:	31345
Location of origin:	Sebeta, Southwest Shoa, Oromia
Country of origin:	Ethiopia
Date of collection:	08/12/2022
Host species:	cattle
Serotype:	SAT2
Topotype:	XIV
Lineage:	
Sublineage:	
Sequence length:	642
Ambiguities:	0
Material submitted for sequencing:	WRL-LFBK1
Harvest date of material:	17/05/2024
Primers:	SAT2-1C445F; SAT2-P1-1223F; SAT2VP3-AB/SAT-2B208R
Received for sequencing:	30/05/2024
Created:	30/06/2024
Last updated:	30/06/2024

VIBASys IDs: sample 55230, genome 55231, sequence viba_55232, sequencing info 55233

Most Closely Related Sequences

sequence	virus name	Host	% Id.	# Ambig.	serotype	topotype	lineage	sublineage
viba_55240	ETH/109/2022	cattle	100.0	0	SAT2	XIV		
viba_55248	ETH/110/2022	cattle	100.0	0	SAT2	XIV		
viba_55236	ETH/108/2022	cattle	100.0	0	SAT2	XIV		
viba_55224	ETH/105/2022	cattle	100.0	0	SAT2	XIV		
viba_55256	ETH/112/2022	cattle	99.8	1	SAT2	XIV		
viba_55228	ETH/106/2022	cattle	99.8	0	SAT2	XIV		
viba_55252	ETH/111/2022	cattle	99.8	0	SAT2	XIV		
viba_55288	ETH/28/2022	cattle	99.8	0	SAT2	XIV		
viba_55292	ETH/29/2022	cattle	99.8	0	SAT2	XIV		
viba_53250	BAR/2/2022	cattle	99.7	0	SAT2	XIV		

Most Closely Related Prototype Sequences

see <http://www.wrlfmd.org/fmdv-genome/fmd-prototype-strains>

sequence	virus name	Host	% Id.	# Ambig.	serotype	topotype	lineage	sublineage
viba_51516	ETH/2/2022	bovine	98.8	0	SAT2	XIV		
viba_724	ETH/2/91	cattle	83.9	0	SAT2	XIV		
viba_470	KEN/2/84	bovine	74.7	0	SAT2	IX		
viba_139	ETH/2/2007	cattle	74.6	0	SAT2	XIII		
viba_111	MAL/1/2003	bovine	74.4	0	SAT2	I		
viba_193	SUD/6/77		74.2	0	SAT2	XIII		
viba_500	NIG/2/75	bovine	74.0	0	SAT2	V		
viba_752	SA/106/59		73.9	0	SAT2	I		
viba_183	ZIM/14/2002	bovine	73.9	0	SAT2	I		
viba_728	GHA/2/90	bovine	73.5	0	SAT2	V		

Virus sample name:	ETH/108/2022
Sender reference:	31346
Location of origin:	Sebeta, Southwest Shoa, Oromia
Country of origin:	Ethiopia
Date of collection:	08/12/2022
Host species:	cattle
Serotype:	SAT2
Topotype:	XIV
Lineage:	
Sublineage:	
Sequence length:	642
Ambiguities:	0
Material submitted for sequencing:	WRL-LFBK1
Harvest date of material:	18/05/2024
Primers:	SAT2-1C445F; SAT2-P1-1223F; SAT2VP3-AB/SAT-2B208R
Received for sequencing:	30/05/2024
Created:	30/06/2024
Last updated:	30/06/2024
VIBASys IDs: sample 55234, genome 55235, sequence viba_55236, sequencing info 55237	

Most Closely Related Sequences

sequence	virus name	Host	% Id.	# Ambig.	serotype	topotype	lineage	sublineage
viba_55240	ETH/109/2022	cattle	100.0	0	SAT2	XIV		
viba_55248	ETH/110/2022	cattle	100.0	0	SAT2	XIV		
viba_55232	ETH/107/2022	cattle	100.0	0	SAT2	XIV		
viba_55224	ETH/105/2022	cattle	100.0	0	SAT2	XIV		
viba_55256	ETH/112/2022	cattle	99.8	1	SAT2	XIV		
viba_55228	ETH/106/2022	cattle	99.8	0	SAT2	XIV		
viba_55252	ETH/111/2022	cattle	99.8	0	SAT2	XIV		
viba_55288	ETH/28/2022	cattle	99.8	0	SAT2	XIV		
viba_55292	ETH/29/2022	cattle	99.8	0	SAT2	XIV		
viba_53250	BAR/2/2022	cattle	99.7	0	SAT2	XIV		

Most Closely Related Prototype Sequences

see <http://www.wrlfmd.org/fmdv-genome/fmd-prototype-strains>

sequence	virus name	Host	% Id.	# Ambig.	serotype	topotype	lineage	sublineage
viba_51516	ETH/2/2022	bovine	98.8	0	SAT2	XIV		
viba_724	ETH/2/91	cattle	83.9	0	SAT2	XIV		
viba_470	KEN/2/84	bovine	74.7	0	SAT2	IX		
viba_139	ETH/2/2007	cattle	74.6	0	SAT2	XIII		
viba_111	MAL/1/2003	bovine	74.4	0	SAT2	I		
viba_193	SUD/6/77		74.2	0	SAT2	XIII		
viba_500	NIG/2/75	bovine	74.0	0	SAT2	V		
viba_752	SA/106/59		73.9	0	SAT2	I		
viba_183	ZIM/14/2002	bovine	73.9	0	SAT2	I		
viba_728	GHA/2/90	bovine	73.5	0	SAT2	V		

Virus sample name:	ETH/109/2022
Sender reference:	31347
Location of origin:	Sebeta, Southwest Shoa, Oromia
Country of origin:	Ethiopia
Date of collection:	08/12/2022
Host species:	cattle
Serotype:	SAT2
Topotype:	XIV
Lineage:	
Sublineage:	
Sequence length:	642
Ambiguities:	0
Material submitted for sequencing:	WRL-LFBK1
Harvest date of material:	18/05/2024
Primers:	SAT2-1C445F; SAT2-P1-1223F; SAT2VP3-AB/SAT-2B208R
Received for sequencing:	30/05/2024
Created:	30/06/2024
Last updated:	30/06/2024
VIBASys IDs: sample 55238, genome 55239, sequence viba_55240, sequencing info 55241	

Most Closely Related Sequences

sequence	virus name	Host	% Id.	# Ambig.	serotype	topotype	lineage	sublineage
viba_55248	ETH/110/2022	cattle	100.0	0	SAT2	XIV		
viba_55236	ETH/108/2022	cattle	100.0	0	SAT2	XIV		
viba_55232	ETH/107/2022	cattle	100.0	0	SAT2	XIV		
viba_55224	ETH/105/2022	cattle	100.0	0	SAT2	XIV		
viba_55256	ETH/112/2022	cattle	99.8	1	SAT2	XIV		
viba_55228	ETH/106/2022	cattle	99.8	0	SAT2	XIV		
viba_55252	ETH/111/2022	cattle	99.8	0	SAT2	XIV		
viba_55288	ETH/28/2022	cattle	99.8	0	SAT2	XIV		
viba_55292	ETH/29/2022	cattle	99.8	0	SAT2	XIV		
viba_53250	BAR/2/2022	cattle	99.7	0	SAT2	XIV		

Most Closely Related Prototype Sequences

see <http://www.wrlfmd.org/fmdv-genome/fmd-prototype-strains>

sequence	virus name	Host	% Id.	# Ambig.	serotype	topotype	lineage	sublineage
viba_51516	ETH/2/2022	bovine	98.8	0	SAT2	XIV		
viba_724	ETH/2/91	cattle	83.9	0	SAT2	XIV		
viba_470	KEN/2/84	bovine	74.7	0	SAT2	IX		
viba_139	ETH/2/2007	cattle	74.6	0	SAT2	XIII		
viba_111	MAL/1/2003	bovine	74.4	0	SAT2	I		
viba_193	SUD/6/77		74.2	0	SAT2	XIII		
viba_500	NIG/2/75	bovine	74.0	0	SAT2	V		
viba_752	SA/106/59		73.9	0	SAT2	I		
viba_183	ZIM/14/2002	bovine	73.9	0	SAT2	I		
viba_728	GHA/2/90	bovine	73.5	0	SAT2	V		

Virus sample name:	ETH/110/2022
Sender reference:	31348
Location of origin:	Sebeta, Southwest Shoa, Oromia
Country of origin:	Ethiopia
Date of collection:	08/12/2022
Host species:	cattle
Serotype:	SAT2
Topotype:	XIV
Lineage:	
Sublineage:	
Sequence length:	642
Ambiguities:	0
Material submitted for sequencing:	WRL-LFBK1
Harvest date of material:	18/05/2024
Primers:	SAT2-1C445F; SAT2-P1-1223F; SAT2VP3-AB/SAT-2B208R
Received for sequencing:	30/05/2024
Created:	30/06/2024
Last updated:	30/06/2024
VIBASys IDs: sample 55246, genome 55247, sequence viba_55248, sequencing info 55249	

Most Closely Related Sequences

sequence	virus name	Host	% Id.	# Ambig.	serotype	topotype	lineage	sublineage
viba_55240	ETH/109/2022	cattle	100.0	0	SAT2	XIV		
viba_55236	ETH/108/2022	cattle	100.0	0	SAT2	XIV		
viba_55232	ETH/107/2022	cattle	100.0	0	SAT2	XIV		
viba_55224	ETH/105/2022	cattle	100.0	0	SAT2	XIV		
viba_55256	ETH/112/2022	cattle	99.8	1	SAT2	XIV		
viba_55228	ETH/106/2022	cattle	99.8	0	SAT2	XIV		
viba_55252	ETH/111/2022	cattle	99.8	0	SAT2	XIV		
viba_55288	ETH/28/2022	cattle	99.8	0	SAT2	XIV		
viba_55292	ETH/29/2022	cattle	99.8	0	SAT2	XIV		
viba_53250	BAR/2/2022	cattle	99.7	0	SAT2	XIV		

Most Closely Related Prototype Sequences

see <http://www.wrlfmd.org/fmdv-genome/fmd-prototype-strains>

sequence	virus name	Host	% Id.	# Ambig.	serotype	topotype	lineage	sublineage
viba_51516	ETH/2/2022	bovine	98.8	0	SAT2	XIV		
viba_724	ETH/2/91	cattle	83.9	0	SAT2	XIV		
viba_470	KEN/2/84	bovine	74.7	0	SAT2	IX		
viba_139	ETH/2/2007	cattle	74.6	0	SAT2	XIII		
viba_111	MAL/1/2003	bovine	74.4	0	SAT2	I		
viba_193	SUD/6/77		74.2	0	SAT2	XIII		
viba_500	NIG/2/75	bovine	74.0	0	SAT2	V		
viba_752	SA/106/59		73.9	0	SAT2	I		
viba_183	ZIM/14/2002	bovine	73.9	0	SAT2	I		
viba_728	GHA/2/90	bovine	73.5	0	SAT2	V		

Virus sample name:	ETH/111/2022
Sender reference:	31349
Location of origin:	Sebeta, Southwest Shoa, Oromia
Country of origin:	Ethiopia
Date of collection:	08/12/2022
Host species:	cattle
Serotype:	SAT2
Topotype:	XIV
Lineage:	
Sublineage:	
Sequence length:	642
Ambiguities:	0
Material submitted for sequencing:	WRL-LFBK1
Harvest date of material:	18/05/2024
Primers:	SAT2-1C445F; SAT2-P1-1223F; SAT2VP3-AB/SAT-2B208R
Received for sequencing:	30/05/2024
Created:	30/06/2024
Last updated:	30/06/2024

VIBASys IDs: sample 55250, genome 55251, sequence viba_55252, sequencing info 55253

Most Closely Related Sequences

sequence	virus name	Host	% Id.	# Ambig.	serotype	topotype	lineage	sublineage
viba_55240	ETH/109/2022	cattle	99.8	0	SAT2	XIV		
viba_55248	ETH/110/2022	cattle	99.8	0	SAT2	XIV		
viba_55236	ETH/108/2022	cattle	99.8	0	SAT2	XIV		
viba_55232	ETH/107/2022	cattle	99.8	0	SAT2	XIV		
viba_55224	ETH/105/2022	cattle	99.8	0	SAT2	XIV		
viba_55256	ETH/112/2022	cattle	99.7	1	SAT2	XIV		
viba_55228	ETH/106/2022	cattle	99.7	0	SAT2	XIV		
viba_55288	ETH/28/2022	cattle	99.7	0	SAT2	XIV		
viba_55292	ETH/29/2022	cattle	99.7	0	SAT2	XIV		
viba_53250	BAR/2/2022	cattle	99.5	0	SAT2	XIV		

Most Closely Related Prototype Sequences

see <http://www.wrlfmd.org/fmdv-genome/fmd-prototype-strains>

sequence	virus name	Host	% Id.	# Ambig.	serotype	topotype	lineage	sublineage
viba_51516	ETH/2/2022	bovine	98.6	0	SAT2	XIV		
viba_724	ETH/2/91	cattle	83.7	0	SAT2	XIV		
viba_193	SUD/6/77		75.7	0	SAT2	XIII		
viba_139	ETH/2/2007	cattle	75.0	0	SAT2	XIII		
viba_111	MAL/1/2003	bovine	74.8	0	SAT2	I		
viba_470	KEN/2/84	bovine	74.5	0	SAT2	IX		
viba_752	SA/106/59		74.3	0	SAT2	I		
viba_500	NIG/2/75	bovine	73.9	0	SAT2	V		
viba_183	ZIM/14/2002	bovine	73.8	0	SAT2	I		
viba_728	GHA/2/90	bovine	73.4	0	SAT2	V		

Virus sample name:	ETH/112/2022
Sender reference:	31350
Location of origin:	Sebeta, Southwest Shoa, Oromia
Country of origin:	Ethiopia
Date of collection:	08/12/2022
Host species:	cattle
Serotype:	SAT2
Topotype:	XIV
Lineage:	
Sublineage:	
Sequence length:	642
Ambiguities:	1
Material submitted for sequencing:	WRL-LFBK1
Harvest date of material:	18/05/2024
Primers:	SAT2-1C445F; SAT2-P1-1223F; SAT2VP3-AB/SAT-2B208R
Received for sequencing:	30/05/2024
Created:	30/06/2024
Last updated:	30/06/2024
VIBASys IDs: sample 55254, genome 55255, sequence viba_55256, sequencing info 55257	

Most Closely Related Sequences

sequence	virus name	Host	% Id.	# Ambig.	serotype	topotype	lineage	sublineage
viba_55240	ETH/109/2022	cattle	99.8	0	SAT2	XIV		
viba_55248	ETH/110/2022	cattle	99.8	0	SAT2	XIV		
viba_55236	ETH/108/2022	cattle	99.8	0	SAT2	XIV		
viba_55232	ETH/107/2022	cattle	99.8	0	SAT2	XIV		
viba_55224	ETH/105/2022	cattle	99.8	0	SAT2	XIV		
viba_55228	ETH/106/2022	cattle	99.7	0	SAT2	XIV		
viba_55252	ETH/111/2022	cattle	99.7	0	SAT2	XIV		
viba_55288	ETH/28/2022	cattle	99.7	0	SAT2	XIV		
viba_55292	ETH/29/2022	cattle	99.7	0	SAT2	XIV		
viba_53250	BAR/2/2022	cattle	99.5	0	SAT2	XIV		

Most Closely Related Prototype Sequences

see <http://www.wrlfmd.org/fmdv-genome/fmd-prototype-strains>

sequence	virus name	Host	% Id.	# Ambig.	serotype	topotype	lineage	sublineage
viba_51516	ETH/2/2022	bovine	98.8	0	SAT2	XIV		
viba_724	ETH/2/91	cattle	83.9	0	SAT2	XIV		
viba_470	KEN/2/84	bovine	74.7	0	SAT2	IX		
viba_139	ETH/2/2007	cattle	74.6	0	SAT2	XIII		
viba_111	MAL/1/2003	bovine	74.4	0	SAT2	I		
viba_193	SUD/6/77		74.2	0	SAT2	XIII		
viba_500	NIG/2/75	bovine	74.0	0	SAT2	V		
viba_752	SA/106/59		73.9	0	SAT2	I		
viba_183	ZIM/14/2002	bovine	73.9	0	SAT2	I		
viba_728	GHA/2/90	bovine	73.5	0	SAT2	V		

Virus sample name:	ETH/1/2023
Sender reference:	2978
Location of origin:	Digaluenatijo, Arsi, Oromia
Country of origin:	Ethiopia
Date of collection:	01/01/2023
Host species:	cattle
Serotype:	SAT2
Topotype:	XIV
Lineage:	
Sublineage:	
Sequence length:	642
Ambiguities:	0
Material submitted for sequencing:	WRL-LFBK1
Harvest date of material:	18/05/2024
Primers:	SAT2-1C445F; SAT2-P1-1223F; SAT2VP3-AB/SAT-2B208R
Received for sequencing:	30/05/2024
Created:	30/06/2024
Last updated:	30/06/2024
VIBASys IDs: sample 55374, genome 55375, sequence viba_55376, sequencing info 55377	

Most Closely Related Sequences

sequence	virus name	Host	% Id.	# Ambig.	serotype	topotype	lineage	sublineage
viba_55380	ETH/2/2023	cattle	100.0	0	SAT2	XIV		
viba_55388	ETH/4/2023	cattle	100.0	0	SAT2	XIV		
viba_55384	ETH/3/2023	cattle	100.0	0	SAT2	XIV		
viba_55360	ETH/84/2022	cattle	99.7	0	SAT2	XIV		
viba_55356	ETH/77/2022	cattle	98.4	0	SAT2	XIV		
viba_55368	ETH/75/2022a	cattle	98.4	0	SAT2	XIV		
viba_55336	ETH/61/2022	cattle	98.4	0	SAT2	XIV		
viba_55216	ETH/9/2022	cattle	98.3	0	SAT2	XIV		
viba_55288	ETH/28/2022	cattle	98.3	0	SAT2	XIV		
viba_55220	ETH/10/2022	cattle	98.3	0	SAT2	XIV		

Most Closely Related Prototype Sequences

see <http://www.wrlfmd.org/fmdv-genome/fmd-prototype-strains>

sequence	virus name	Host	% Id.	# Ambig.	serotype	topotype	lineage	sublineage
viba_51516	ETH/2/2022	bovine	97.8	0	SAT2	XIV		
viba_724	ETH/2/91	cattle	84.2	0	SAT2	XIV		
viba_470	KEN/2/84	bovine	75.0	0	SAT2	IX		
viba_139	ETH/2/2007	cattle	74.5	0	SAT2	XIII		
viba_111	MAL/1/2003	bovine	74.0	0	SAT2	I		
viba_380	RHO/1/48		73.9	0	SAT2	III		
viba_193	SUD/6/77		73.9	0	SAT2	XIII		
viba_500	NIG/2/75	bovine	73.7	0	SAT2	V		
viba_183	ZIM/14/2002	bovine	73.6	0	SAT2	I		
viba_728	GHA/2/90	bovine	73.3	0	SAT2	V		

Virus sample name:	ETH/2/2023
Sender reference:	2979
Location of origin:	Digaluenatijo, Arsi, Oromia
Country of origin:	Ethiopia
Date of collection:	01/01/2023
Host species:	cattle
Serotype:	SAT2
Topotype:	XIV
Lineage:	
Sublineage:	
Sequence length:	642
Ambiguities:	0
Material submitted for sequencing:	WRL-LFBK1
Harvest date of material:	19/05/2024
Primers:	SAT2-1C445F; SAT2-P1-1223F; SAT2VP3-AB/SAT-2B208R
Received for sequencing:	30/05/2024
Created:	30/06/2024
Last updated:	30/06/2024

VIBASys IDs: sample 55378, genome 55379, sequence viba_55380, sequencing info 55381

Most Closely Related Sequences

sequence	virus name	Host	% Id.	# Ambig.	serotype	topotype	lineage	sublineage
viba_55376	ETH/1/2023	cattle	100.0	0	SAT2	XIV		
viba_55388	ETH/4/2023	cattle	100.0	0	SAT2	XIV		
viba_55384	ETH/3/2023	cattle	100.0	0	SAT2	XIV		
viba_55360	ETH/84/2022	cattle	99.7	0	SAT2	XIV		
viba_55356	ETH/77/2022	cattle	98.4	0	SAT2	XIV		
viba_55368	ETH/75/2022a	cattle	98.4	0	SAT2	XIV		
viba_55336	ETH/61/2022	cattle	98.4	0	SAT2	XIV		
viba_55216	ETH/9/2022	cattle	98.3	0	SAT2	XIV		
viba_55288	ETH/28/2022	cattle	98.3	0	SAT2	XIV		
viba_55220	ETH/10/2022	cattle	98.3	0	SAT2	XIV		

Most Closely Related Prototype Sequences

see <http://www.wrlfmd.org/fmdv-genome/fmd-prototype-strains>

sequence	virus name	Host	% Id.	# Ambig.	serotype	topotype	lineage	sublineage
viba_51516	ETH/2/2022	bovine	97.8	0	SAT2	XIV		
viba_724	ETH/2/91	cattle	84.2	0	SAT2	XIV		
viba_470	KEN/2/84	bovine	75.0	0	SAT2	IX		
viba_139	ETH/2/2007	cattle	74.5	0	SAT2	XIII		
viba_111	MAL/1/2003	bovine	74.0	0	SAT2	I		
viba_380	RHO/1/48		73.9	0	SAT2	III		
viba_193	SUD/6/77		73.9	0	SAT2	XIII		
viba_500	NIG/2/75	bovine	73.7	0	SAT2	V		
viba_183	ZIM/14/2002	bovine	73.6	0	SAT2	I		
viba_728	GHA/2/90	bovine	73.3	0	SAT2	V		

Virus sample name:	ETH/3/2023
Sender reference:	2980
Location of origin:	Digaluematijo, Arsi, Oromia
Country of origin:	Ethiopia
Date of collection:	01/01/2023
Host species:	cattle
Serotype:	SAT2
Topotype:	XIV
Lineage:	
Sublineage:	
Sequence length:	642
Ambiguities:	0
Material submitted for sequencing:	WRL-LFBK1
Harvest date of material:	19/05/2024
Primers:	SAT2-1C445F; SAT2-P1-1223F; SAT2VP3-AB/SAT-2B208R
Received for sequencing:	30/05/2024
Created:	30/06/2024
Last updated:	30/06/2024
VIBASys IDs: sample 55382, genome 55383, sequence viba_55384, sequencing info 55385	

Most Closely Related Sequences

sequence	virus name	Host	% Id.	# Ambig.	serotype	topotype	lineage	sublineage
viba_55380	ETH/2/2023	cattle	100.0	0	SAT2	XIV		
viba_55376	ETH/1/2023	cattle	100.0	0	SAT2	XIV		
viba_55388	ETH/4/2023	cattle	100.0	0	SAT2	XIV		
viba_55360	ETH/84/2022	cattle	99.7	0	SAT2	XIV		
viba_55356	ETH/77/2022	cattle	98.4	0	SAT2	XIV		
viba_55368	ETH/75/2022a	cattle	98.4	0	SAT2	XIV		
viba_55336	ETH/61/2022	cattle	98.4	0	SAT2	XIV		
viba_55216	ETH/9/2022	cattle	98.3	0	SAT2	XIV		
viba_55288	ETH/28/2022	cattle	98.3	0	SAT2	XIV		
viba_55220	ETH/10/2022	cattle	98.3	0	SAT2	XIV		

Most Closely Related Prototype Sequences

see <http://www.wrlfmd.org/fmdv-genome/fmd-prototype-strains>

sequence	virus name	Host	% Id.	# Ambig.	serotype	topotype	lineage	sublineage
viba_51516	ETH/2/2022	bovine	97.8	0	SAT2	XIV		
viba_724	ETH/2/91	cattle	84.2	0	SAT2	XIV		
viba_470	KEN/2/84	bovine	75.0	0	SAT2	IX		
viba_139	ETH/2/2007	cattle	74.5	0	SAT2	XIII		
viba_111	MAL/1/2003	bovine	74.0	0	SAT2	I		
viba_380	RHO/1/48		73.9	0	SAT2	III		
viba_193	SUD/6/77		73.9	0	SAT2	XIII		
viba_500	NIG/2/75	bovine	73.7	0	SAT2	V		
viba_183	ZIM/14/2002	bovine	73.6	0	SAT2	I		
viba_728	GHA/2/90	bovine	73.3	0	SAT2	V		

Virus sample name:	ETH/4/2023
Sender reference:	2981
Location of origin:	Digaluematijo, Arsi, Oromia
Country of origin:	Ethiopia
Date of collection:	01/01/2023
Host species:	cattle
Serotype:	SAT2
Topotype:	XIV
Lineage:	
Sublineage:	
Sequence length:	642
Ambiguities:	0
Material submitted for sequencing:	WRL-LFBK1
Harvest date of material:	19/05/2024
Primers:	SAT2-1C445F; SAT2-P1-1223F; SAT2VP3-AB/SAT-2B208R
Received for sequencing:	30/05/2024
Created:	30/06/2024
Last updated:	30/06/2024

VIBASys IDs: sample 55386, genome 55387, sequence viba_55388, sequencing info 55389

Most Closely Related Sequences

sequence	virus name	Host	% Id.	# Ambig.	serotype	topotype	lineage	sublineage
viba_55380	ETH/2/2023	cattle	100.0	0	SAT2	XIV		
viba_55376	ETH/1/2023	cattle	100.0	0	SAT2	XIV		
viba_55384	ETH/3/2023	cattle	100.0	0	SAT2	XIV		
viba_55360	ETH/84/2022	cattle	99.7	0	SAT2	XIV		
viba_55356	ETH/77/2022	cattle	98.4	0	SAT2	XIV		
viba_55368	ETH/75/2022a	cattle	98.4	0	SAT2	XIV		
viba_55336	ETH/61/2022	cattle	98.4	0	SAT2	XIV		
viba_55216	ETH/9/2022	cattle	98.3	0	SAT2	XIV		
viba_55288	ETH/28/2022	cattle	98.3	0	SAT2	XIV		
viba_55220	ETH/10/2022	cattle	98.3	0	SAT2	XIV		

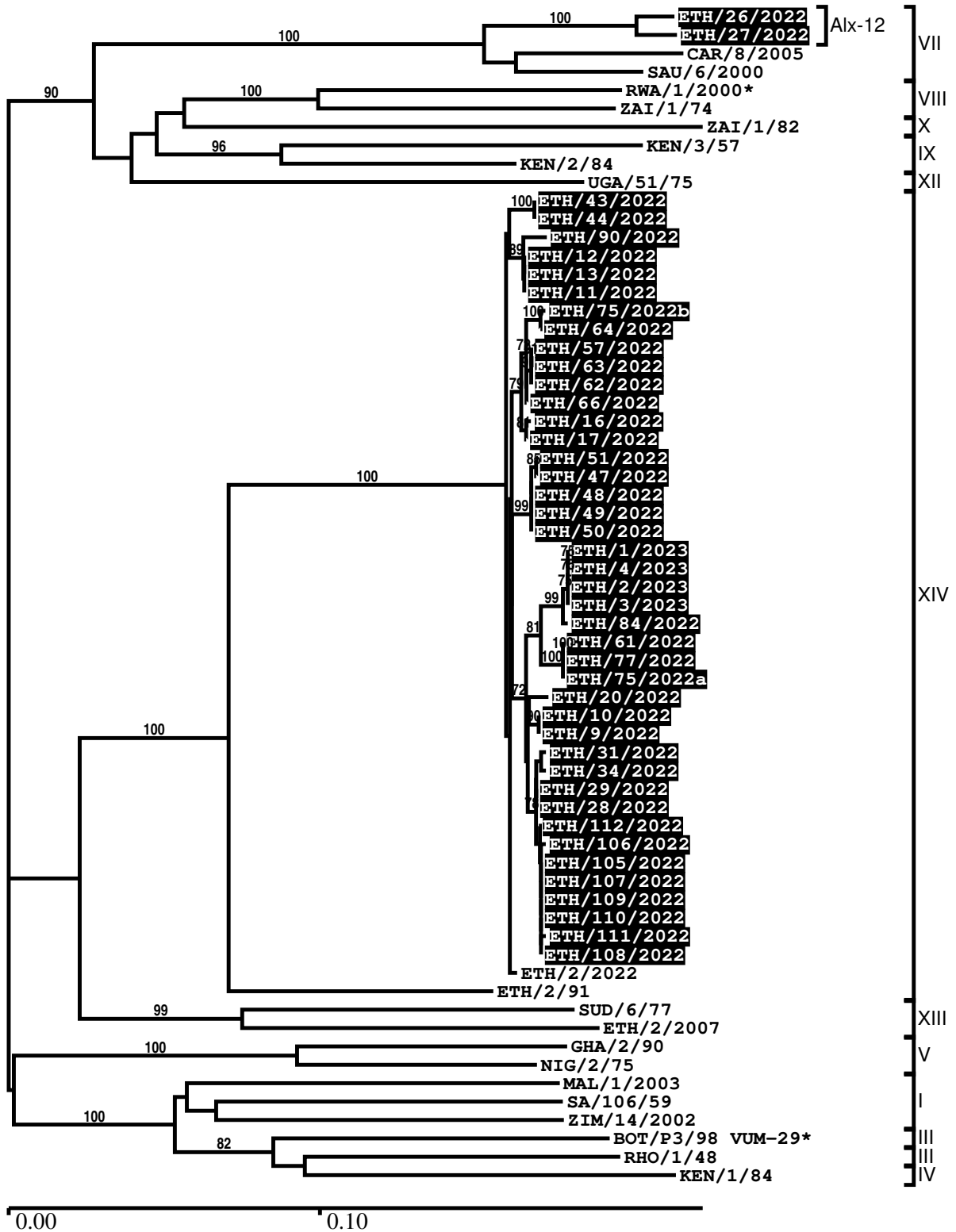
Most Closely Related Prototype Sequences

see <http://www.wrlfmd.org/fmdv-genome/fmd-prototype-strains>

sequence	virus name	Host	% Id.	# Ambig.	serotype	topotype	lineage	sublineage
viba_51516	ETH/2/2022	bovine	97.8	0	SAT2	XIV		
viba_724	ETH/2/91	cattle	84.2	0	SAT2	XIV		
viba_470	KEN/2/84	bovine	75.0	0	SAT2	IX		
viba_139	ETH/2/2007	cattle	74.5	0	SAT2	XIII		
viba_111	MAL/1/2003	bovine	74.0	0	SAT2	I		
viba_380	RHO/1/48		73.9	0	SAT2	III		
viba_193	SUD/6/77		73.9	0	SAT2	XIII		
viba_500	NIG/2/75	bovine	73.7	0	SAT2	V		
viba_183	ZIM/14/2002	bovine	73.6	0	SAT2	I		
viba_728	GHA/2/90	bovine	73.3	0	SAT2	V		

Report on FMDV SAT2 in Ethiopia in 2022, 2023

Batch: WRLFMD/2024/000005



*, not a WRLFMD Reference Number

Analysis Parameters

VP1 subsequence extractor:	vp1_SAT2
Query sequence set:	WRLFMD/2024/000005-Ethiopia-SAT2 (44 sequences)
Sequence database set:	allseqs_SAT2 (1246 sequences)
Prototype sequence set:	!prototypes_SAT2 (26 sequences)
Number of related sequences reported:	10
Minimal VP1 subsequence match length	600
Sequence alignment method:	muscle (default parameters)
Sequence alignment length:	642
Phylogeny reconstruction method:	fdnadist, fneighbor
Number of bootstrap samples:	1000
Random seed for bootstrapping:	1
Displaying bootstrap values above:	70.0%
Number of sequences in tree capped at:	100
Number of prototype sequences in tree:	20
VIBASys version:	reflabs-1.1.2

Sequences in the Phylogenetic Tree

All sequences in the tree are in taxonomic group FMDV/SAT2

label	accession	host(s)	lab	country	taxonomic information
ETH/26/2022	n/a	cattle	WRLFMD	Ethiopia	VII/Alx-12
ETH/27/2022	n/a	cattle	WRLFMD	Ethiopia	VII/Alx-12
CAR/8/2005	JX570616	cattle	WRLFMD	Cameroon	VII
SAU/6/2000	AF367135	bovine	OVI	Saudi Arabia	VII
RWA/1/2000*	AF367134	n/a	OVI	Rwanda	VIII
ZAI/1/74	DQ009737	n/a	OVI	Zaire	VIII
ZAI/1/82	AF367100	bovine	OVI	Zaire	X
KEN/3/57	AJ251473	n/a	WRLFMD	Kenya	IX
KEN/2/84	AY343941	bovine	OVI	Kenya	IX
UGA/51/75	AY343963	bovine	OVI	Uganda	XII
ETH/43/2022	n/a	cattle	WRLFMD	Ethiopia	XIV
ETH/44/2022	n/a	cattle	WRLFMD	Ethiopia	XIV
ETH/90/2022	n/a	cattle	WRLFMD	Ethiopia	XIV
ETH/12/2022	n/a	cattle	WRLFMD	Ethiopia	XIV
ETH/13/2022	n/a	cattle	WRLFMD	Ethiopia	XIV
ETH/11/2022	n/a	cattle	WRLFMD	Ethiopia	XIV
ETH/75/2022b	n/a	cattle	WRLFMD	Ethiopia	XIV
ETH/64/2022	n/a	cattle	WRLFMD	Ethiopia	XIV
ETH/57/2022	n/a	cattle	WRLFMD	Ethiopia	XIV
ETH/63/2022	n/a	cattle	WRLFMD	Ethiopia	XIV
ETH/62/2022	n/a	cattle	WRLFMD	Ethiopia	XIV
ETH/66/2022	n/a	cattle	WRLFMD	Ethiopia	XIV
ETH/16/2022	n/a	cattle	WRLFMD	Ethiopia	XIV
ETH/17/2022	n/a	cattle	WRLFMD	Ethiopia	XIV
ETH/51/2022	n/a	cattle	WRLFMD	Ethiopia	XIV
ETH/47/2022	n/a	cattle	WRLFMD	Ethiopia	XIV
ETH/48/2022	n/a	cattle	WRLFMD	Ethiopia	XIV
ETH/49/2022	n/a	cattle	WRLFMD	Ethiopia	XIV
ETH/50/2022	n/a	cattle	WRLFMD	Ethiopia	XIV
ETH/1/2023	n/a	cattle	WRLFMD	Ethiopia	XIV
ETH/4/2023	n/a	cattle	WRLFMD	Ethiopia	XIV
ETH/2/2023	n/a	cattle	WRLFMD	Ethiopia	XIV
ETH/3/2023	n/a	cattle	WRLFMD	Ethiopia	XIV
ETH/84/2022	n/a	cattle	WRLFMD	Ethiopia	XIV
ETH/61/2022	n/a	cattle	WRLFMD	Ethiopia	XIV
ETH/77/2022	n/a	cattle	WRLFMD	Ethiopia	XIV

continued on next page

label	accession	host(s)	lab	country	taxonomic information
ETH/75/2022a	n/a	cattle	WRLFMD	Ethiopia	XIV
ETH/20/2022	n/a	cattle	WRLFMD	Ethiopia	XIV
ETH/10/2022	n/a	cattle	WRLFMD	Ethiopia	XIV
ETH/9/2022	n/a	cattle	WRLFMD	Ethiopia	XIV
ETH/31/2022	n/a	cattle	WRLFMD	Ethiopia	XIV
ETH/34/2022	n/a	cattle	WRLFMD	Ethiopia	XIV
ETH/29/2022	n/a	cattle	WRLFMD	Ethiopia	XIV
ETH/28/2022	n/a	cattle	WRLFMD	Ethiopia	XIV
ETH/112/2022	n/a	cattle	WRLFMD	Ethiopia	XIV
ETH/106/2022	n/a	cattle	WRLFMD	Ethiopia	XIV
ETH/105/2022	n/a	cattle	WRLFMD	Ethiopia	XIV
ETH/107/2022	n/a	cattle	WRLFMD	Ethiopia	XIV
ETH/109/2022	n/a	cattle	WRLFMD	Ethiopia	XIV
ETH/110/2022	n/a	cattle	WRLFMD	Ethiopia	XIV
ETH/111/2022	n/a	cattle	WRLFMD	Ethiopia	XIV
ETH/108/2022	n/a	cattle	WRLFMD	Ethiopia	XIV
ETH/2/2022	n/a	bovine	WRLFMD	Ethiopia	XIV
ETH/2/91	AY343938	cattle	OVI	Ethiopia	XIV
SUD/6/77	AY343939	n/a	OVI	Sudan	XIII
ETH/2/2007	FJ798161	cattle	WRLFMD	Ethiopia	XIII
GHA/2/90	AF479415	bovine	OVI	Ghana	V
NIG/2/75	AF367139	bovine	OVI	Nigeria	V
MAL/1/2003	n/a	bovine	WRLFMD	Malawi	I
SA/106/59	AY593848	n/a	PIADC	South Africa (SA)	I
ZIM/14/2002	KF219689	bovine	WRLFMD	Zimbabwe	I
BOT/P3/98 VUM-29*	AF367124	African buffalo	OVI	Botswana	III
RHO/1/48	AY593847	n/a	PIADC	Rhodesia	III
KEN/1/84	AY344505	bovine	OVI	Kenya	IV

*, not a WRLFMD Reference Number

n/a, not available