

FAO World Reference Laboratory for Foot-and-Mouth Disease (WRLFMD)

Genotyping Report v2

FMDV serotype: O
Country: Uganda
Year: 2023, 2024
Batch: WRLFMD/2024/000004
No. of sequences: 18
Report date: 10th May 2024
Report generated by: Nick Knowles
Report checked by: Hayley Hicks

This updated report now contains 7 extra sequences from samples that were originally typed as FMDV-GD: UGA/21/2023, UGA/23/2023, UGA/27/2023, UGA/30/2023, UGA/32/2023, UGA/4/2024 & UGA/6/2024.



Copyright © 2024 The Pirbright Institute, Ash Road, Pirbright, Woking GU24 0NF, United Kingdom.

www: <http://www.wrlfmd.org/>

email: reporting@pirbright.ac.uk

The contents of this report should not be reproduced without permission.

Virus sample name:	UGA/21/2023
Sender reference:	400
Location of origin:	Butaleja district, Eastern Region
Country of origin:	Uganda
Date of collection:	10/11/2023
Host species:	bovine
Serotype:	O
Topotype:	EA-2
Lineage:	
Sublineage:	
Sequence length:	633
Ambiguities:	0
Material submitted for sequencing:	OF
Harvest date of material:	n/a
Primers:	O-1C244F/EUR-2B52R; FMD-3161F/FMD-4303R
Received for sequencing:	01/05/2024
Created:	10/05/2024
Last updated:	10/05/2024

VIBASys IDs: sample 55156, genome 55157, sequence viba_55158, sequencing info 55159

Most Closely Related Sequences

sequence	virus name	Host	% Id.	# Ambig.	serotype	topotype	lineage	sublineage
viba_55162	UGA/23/2023	bovine	99.8	0	O	EA-2		
viba_54971	KEN/3/2023	cattle	99.4	0	O	EA-2		
viba_54983	KEN/7/2023	cattle	99.4	0	O	EA-2		
viba_48628	KEN/8/2021	cattle	97.5	0	O	EA-2		
viba_48624	KEN/6/2021	cattle	97.5	0	O	EA-2		
viba_54955	KEN/2/2022	cattle	96.8	0	O	EA-2		
viba_54975	KEN/4/2023	cattle	95.9	0	O	EA-2		
viba_54963	KEN/1/2023	cattle	95.9	0	O	EA-2		
viba_54967	KEN/2/2023	cattle	95.7	0	O	EA-2		
viba_41350	TAN-SUA-2017-0735	cattle	95.6	0	O	EA-2		

Most Closely Related Prototype Sequences

see <http://www.wrlfmd.org/fmdv-genome/fmd-prototype-strains>

sequence	virus name	Host	% Id.	# Ambig.	serotype	topotype	lineage	sublineage
viba_263	TAN/2/2004	bovine	92.9	0	O	EA-2		
viba_74	KEN/5/2002	bovine	88.8	0	O	EA-2		
viba_85	UGA/3/2002		88.5	0	O	EA-2		
viba_221	MAL/1/98		87.2	0	O	EA-2		
viba_35331	SRL/1/78		84.4	0	O	WCSA-1	Srl-77	
viba_38646	SYR/18/62		83.7	0	O	WCSA-1	Syr-62	
viba_523	K83/79		83.3	0	O	EA-1		
viba_1893	K40/84	bovine	83.3	0	O	EA-1		
viba_47579	SRL/1/2019	cattle	83.3	0	O	ME-SA	SA-2018	
viba_116	SUD/2/86	bovine	83.3	0	O	EA-3		

Virus sample name:	UGA/23/2023
Sender reference:	402
Location of origin:	Butaleja district, Eastern Region
Country of origin:	Uganda
Date of collection:	10/11/2023
Host species:	bovine
Serotype:	O
Topotype:	EA-2
Lineage:	
Sublineage:	
Sequence length:	633
Ambiguities:	0
Material submitted for sequencing:	OF
Harvest date of material:	n/a
Primers:	O-1C244F/EUR-2B52R; FMD-3161F/FMD-4303R
Received for sequencing:	01/05/2024
Created:	10/05/2024
Last updated:	10/05/2024

VIBASys IDs: sample 55160, genome 55161, sequence viba_55162, sequencing info 55163

Most Closely Related Sequences

sequence	virus name	Host	% Id.	# Ambig.	serotype	topotype	lineage	sublineage
viba_55158	UGA/21/2023	bovine	99.8	0	O	EA-2		
viba_54971	KEN/3/2023	cattle	99.5	0	O	EA-2		
viba_54983	KEN/7/2023	cattle	99.5	0	O	EA-2		
viba_48628	KEN/8/2021	cattle	97.6	0	O	EA-2		
viba_48624	KEN/6/2021	cattle	97.6	0	O	EA-2		
viba_54955	KEN/2/2022	cattle	97.0	0	O	EA-2		
viba_54975	KEN/4/2023	cattle	96.1	0	O	EA-2		
viba_54963	KEN/1/2023	cattle	96.1	0	O	EA-2		
viba_54967	KEN/2/2023	cattle	95.9	0	O	EA-2		
viba_41350	TAN-SUA-2017-0735	cattle	95.7	0	O	EA-2		

Most Closely Related Prototype Sequences

see <http://www.wrlfmd.org/fmdv-genome/fmd-prototype-strains>

sequence	virus name	Host	% Id.	# Ambig.	serotype	topotype	lineage	sublineage
viba_263	TAN/2/2004	bovine	93.0	0	O	EA-2		
viba_74	KEN/5/2002	bovine	88.9	0	O	EA-2		
viba_85	UGA/3/2002		88.6	0	O	EA-2		
viba_221	MAL/1/98		87.4	0	O	EA-2		
viba_35331	SRL/1/78		84.3	0	O	WCSA-1	Srl-77	
viba_38646	SYR/18/62		83.8	0	O	WCSA-1	Syr-62	
viba_523	K83/79		83.4	0	O	EA-1		
viba_1893	K40/84	bovine	83.4	0	O	EA-1		
viba_47579	SRL/1/2019	cattle	83.4	0	O	ME-SA	SA-2018	
viba_116	SUD/2/86	bovine	83.4	0	O	EA-3		

Virus sample name:	UGA/27/2023
Sender reference:	395
Location of origin:	Budaka district, Eastern Region
Country of origin:	Uganda
Date of collection:	10/11/2023
Host species:	bovine
Serotype:	O
Topotype:	EA-2
Lineage:	
Sublineage:	
Sequence length:	633
Ambiguities:	0
Material submitted for sequencing:	OS
Harvest date of material:	n/a
Primers:	O-1C244F/EUR-2B52R; FMD-3161F/FMD-4303R
Received for sequencing:	01/05/2024
Created:	10/05/2024
Last updated:	10/05/2024
VIBASys IDs: sample 55164, genome 55165, sequence viba_55166, sequencing info 55167	

Most Closely Related Sequences

sequence	virus name	Host	% Id.	# Ambig.	serotype	topotype	lineage	sublineage
viba_55170	UGA/30/2023	bovine	99.1	0	O	EA-2		
viba_55143	UGA13/2024	bovine	98.6	0	O	EA-2		
viba_48596	KEN/8/2020	cattle	96.8	0	O	EA-2		
viba_48580	KEN/2/2020	cattle	96.5	0	O	EA-2		
viba_52825	K68/2020	bovine	96.5	0	O	EA-2		
viba_52821	K29/2020	bovine	96.4	0	O	EA-2		
viba_52817	K31/2020	bovine	96.1	0	O	EA-2		
viba_52813	K14/2020	bovine	95.7	0	O	EA-2		
viba_48588	KEN/6/2020	cattle	95.4	0	O	EA-2		
viba_52833	K85/2020	bovine	95.3	0	O	EA-2		

Most Closely Related Prototype Sequences

see <http://www.wrlfmd.org/fmdv-genome/fmd-prototype-strains>

sequence	virus name	Host	% Id.	# Ambig.	serotype	topotype	lineage	sublineage
viba_263	TAN/2/2004	bovine	92.1	0	O	EA-2		
viba_74	KEN/5/2002	bovine	88.3	0	O	EA-2		
viba_221	MAL/1/98		87.8	0	O	EA-2		
viba_85	UGA/3/2002		87.7	0	O	EA-2		
viba_523	K83/79		85.0	0	O	EA-1		
viba_1893	K40/84	bovine	84.3	0	O	EA-1		
viba_35331	SRL/1/78		84.3	0	O	WCSA-1	Srl-77	
viba_27877	SRL/2/97	bovine	84.2	0	O	ME-SA	Srl-97	
viba_9021	LAO/2/2006	cattle	84.1	0	O	ME-SA	PanAsia	
viba_617	IND/53/79	bovine	84.1	0	O	ME-SA		

Virus sample name:	UGA/30/2023
Sender reference:	422
Location of origin:	Nwoya district, Northern region
Country of origin:	Uganda
Date of collection:	10/11/2023
Host species:	bovine
Serotype:	O
Topotype:	EA-2
Lineage:	
Sublineage:	
Sequence length:	633
Ambiguities:	0
Material submitted for sequencing:	OF
Harvest date of material:	n/a
Primers:	O-1C244F/EUR-2B52R; FMD-3161F/FMD-4303R
Received for sequencing:	01/05/2024
Created:	10/05/2024
Last updated:	10/05/2024
VIBASys IDs: sample 55168, genome 55169, sequence viba_55170, sequencing info 55171	

Most Closely Related Sequences

sequence	virus name	Host	% Id.	# Ambig.	serotype	topotype	lineage	sublineage
viba_55166	UGA/27/2023	bovine	99.1	0	O	EA-2		
viba_55143	UGA13/2024	bovine	98.3	0	O	EA-2		
viba_48596	KEN/8/2020	cattle	96.5	0	O	EA-2		
viba_48580	KEN/2/2020	cattle	96.2	0	O	EA-2		
viba_52825	K68/2020	bovine	96.2	0	O	EA-2		
viba_52821	K29/2020	bovine	96.1	0	O	EA-2		
viba_52817	K31/2020	bovine	95.7	0	O	EA-2		
viba_52813	K14/2020	bovine	95.4	0	O	EA-2		
viba_48588	KEN/6/2020	cattle	95.1	0	O	EA-2		
viba_52833	K85/2020	bovine	94.9	0	O	EA-2		

Most Closely Related Prototype Sequences

see <http://www.wrlfmd.org/fmdv-genome/fmd-prototype-strains>

sequence	virus name	Host	% Id.	# Ambig.	serotype	topotype	lineage	sublineage
viba_263	TAN/2/2004	bovine	91.9	0	O	EA-2		
viba_74	KEN/5/2002	bovine	88.2	0	O	EA-2		
viba_221	MAL/1/98		87.7	0	O	EA-2		
viba_85	UGA/3/2002		87.6	0	O	EA-2		
viba_523	K83/79		84.4	0	O	EA-1		
viba_617	IND/53/79	bovine	84.1	0	O	ME-SA		
viba_1893	K40/84	bovine	84.0	0	O	EA-1		
viba_35331	SRL/1/78		84.0	0	O	WCSA-1	Srl-77	
viba_854	ETH/1/2007	cattle	83.9	0	O	EA-3		
viba_116	SUD/2/86	bovine	83.9	0	O	EA-3		

Virus sample name:	UGA/32/2023
Sender reference:	476
Location of origin:	Mubende district, Central region
Country of origin:	Uganda
Date of collection:	10/12/2023
Host species:	bovine
Serotype:	O
Topotype:	EA-2
Lineage:	
Sublineage:	
Sequence length:	633
Ambiguities:	0
Material submitted for sequencing:	OF
Harvest date of material:	n/a
Primers:	O-1C244F/EUR-2B52R; FMD-3161F/FMD-4303R
Received for sequencing:	01/05/2024
Created:	10/05/2024
Last updated:	10/05/2024

VIBASys IDs: sample 55172, genome 55173, sequence viba_55174, sequencing info 55175

Most Closely Related Sequences

sequence	virus name	Host	% Id.	# Ambig.	serotype	topotype	lineage	sublineage
viba_49035	UGA/25/2020	cattle	96.8	0	O	EA-2		
viba_48707	COD/71/2021	cattle	96.7	0	O	EA-2		
viba_48703	COD/69/2021	cattle	96.7	0	O	EA-2		
viba_48667	COD/12/2021	cattle	96.5	0	O	EA-2		
viba_49031	UGA/24/2020	cattle	96.5	0	O	EA-2		
viba_48671	COD/19/2021	cattle	96.5	0	O	EA-2		
viba_49023	UGA/20/2020	cattle	96.5	0	O	EA-2		
viba_53305	MBG/TZ/23/2021	zebu cattle	96.5	1	O	EA-2		
viba_48663	COD/6/2021	cattle	96.5	0	O	EA-2		
viba_49027	UGA/22/2020	cattle	96.5	0	O	EA-2		

Most Closely Related Prototype Sequences

see <http://www.wrlfmd.org/fmdv-genome/fmd-prototype-strains>

sequence	virus name	Host	% Id.	# Ambig.	serotype	topotype	lineage	sublineage
viba_263	TAN/2/2004	bovine	91.6	0	O	EA-2		
viba_74	KEN/5/2002	bovine	87.2	0	O	EA-2		
viba_85	UGA/3/2002		86.9	0	O	EA-2		
viba_221	MAL/1/98		86.3	0	O	EA-2		
viba_27877	SRL/2/97	bovine	83.8	0	O	ME-SA	Srl-97	
viba_1893	K40/84	bovine	83.6	0	O	EA-1		
viba_35331	SRL/1/78		83.6	0	O	WCSA-1	Srl-77	
viba_523	K83/79		83.0	0	O	EA-1		
viba_397	UAE/4/2008	gazelle	82.9	0	O	ME-SA	Ind-2001	c
viba_116	SUD/2/86	bovine	82.6	0	O	EA-3		

Virus sample name:	UGA/4/2024
Sender reference:	17
Location of origin:	Kabarole district, Western region
Country of origin:	Uganda
Date of collection:	17/01/2024
Host species:	bovine
Serotype:	O
Topotype:	EA-2
Lineage:	
Sublineage:	
Sequence length:	633
Ambiguities:	0
Material submitted for sequencing:	OS
Harvest date of material:	n/a
Primers:	O-1C244F/EUR-2B52R; FMD-3161F/FMD-4303R
Received for sequencing:	01/05/2024
Created:	10/05/2024
Last updated:	10/05/2024

VIBASys IDs: sample 55176, genome 55177, sequence viba_55178, sequencing info 55179

Most Closely Related Sequences

sequence	virus name	Host	% Id.	# Ambig.	serotype	topotype	lineage	sublineage
viba_55182	UGA/6/2024	bovine	99.7	0	O	EA-2		
viba_41350	TAN-SUA-2017-0735	cattle	97.0	0	O	EA-2		
viba_41338	COM/19Z005557/19	cattle	97.0	0	O	EA-2		
viba_48608	KEN/2/2021	cattle	97.0	0	O	EA-2		
viba_41334	COM/19Z005556/19	cattle	96.8	0	O	EA-2		
viba_48667	COD/12/2021	cattle	96.7	0	O	EA-2		
viba_49031	UGA/24/2020	cattle	96.7	0	O	EA-2		
viba_49035	UGA/25/2020	cattle	96.7	0	O	EA-2		
viba_41354	TAN-SUA-2017-0747	cattle	96.7	0	O	EA-2		
viba_48671	COD/19/2021	cattle	96.7	0	O	EA-2		

Most Closely Related Prototype Sequences

see <http://www.wrlfmd.org/fmdv-genome/fmd-prototype-strains>

sequence	virus name	Host	% Id.	# Ambig.	serotype	topotype	lineage	sublineage
viba_263	TAN/2/2004	bovine	93.5	0	O	EA-2		
viba_85	UGA/3/2002		89.9	0	O	EA-2		
viba_74	KEN/5/2002	bovine	89.1	0	O	EA-2		
viba_221	MAL/1/98		87.2	0	O	EA-2		
viba_35331	SRL/1/78		85.3	0	O	WCSA-1	Srl-77	
viba_523	K83/79		84.2	0	O	EA-1		
viba_38646	SYR/18/62		84.1	0	O	WCSA-1	Syr-62	
viba_27877	SRL/2/97	bovine	83.8	0	O	ME-SA	Srl-97	
viba_116	SUD/2/86	bovine	83.8	0	O	EA-3		
viba_1893	K40/84	bovine	83.7	0	O	EA-1		

Virus sample name:	UGA/6/2024
Sender reference:	23
Location of origin:	Kabarole district, Western region
Country of origin:	Uganda
Date of collection:	17/01/2024
Host species:	bovine
Serotype:	O
Topotype:	EA-2
Lineage:	
Sublineage:	
Sequence length:	633
Ambiguities:	0
Material submitted for sequencing:	OS
Harvest date of material:	n/a
Primers:	O-1C244F/EUR-2B52R; FMD-3161F/FMD-4303R
Received for sequencing:	01/05/2024
Created:	10/05/2024
Last updated:	10/05/2024

VIBASys IDs: sample 55180, genome 55181, sequence viba_55182, sequencing info 55183

Most Closely Related Sequences

sequence	virus name	Host	% Id.	# Ambig.	serotype	topotype	lineage	sublineage
viba_55178	UGA/4/2024	bovine	99.7	0	O	EA-2		
viba_41350	TAN-SUA-2017-0735	cattle	97.3	0	O	EA-2		
viba_41338	COM/19Z005557/19	cattle	97.3	0	O	EA-2		
viba_48608	KEN/2/2021	cattle	97.3	0	O	EA-2		
viba_41334	COM/19Z005556/19	cattle	97.2	0	O	EA-2		
viba_48667	COD/12/2021	cattle	97.0	0	O	EA-2		
viba_49031	UGA/24/2020	cattle	97.0	0	O	EA-2		
viba_49035	UGA/25/2020	cattle	97.0	0	O	EA-2		
viba_41354	TAN-SUA-2017-0747	cattle	97.0	0	O	EA-2		
viba_48671	COD/19/2021	cattle	97.0	0	O	EA-2		

Most Closely Related Prototype Sequences

see <http://www.wrlfmd.org/fmdv-genome/fmd-prototype-strains>

sequence	virus name	Host	% Id.	# Ambig.	serotype	topotype	lineage	sublineage
viba_263	TAN/2/2004	bovine	93.7	0	O	EA-2		
viba_85	UGA/3/2002		89.9	0	O	EA-2		
viba_74	KEN/5/2002	bovine	89.3	0	O	EA-2		
viba_221	MAL/1/98		87.4	0	O	EA-2		
viba_35331	SRL/1/78		85.5	0	O	WCSA-1	Srl-77	
viba_523	K83/79		84.4	0	O	EA-1		
viba_38646	SYR/18/62		84.3	0	O	WCSA-1	Syr-62	
viba_27877	SRL/2/97	bovine	84.1	0	O	ME-SA	Srl-97	
viba_1893	K40/84	bovine	83.9	0	O	EA-1		
viba_116	SUD/2/86	bovine	83.9	0	O	EA-3		

Virus sample name:	UGA/7/2024
Sender reference:	234
Location of origin:	Mbarara district, Western region
Country of origin:	Uganda
Date of collection:	14/02/2024
Host species:	
Serotype:	O
Topotype:	EA-2
Lineage:	
Sublineage:	
Sequence length:	633
Ambiguities:	0
Material submitted for sequencing:	WRL-LFBK1
Harvest date of material:	05/04/2024
Primers:	O-1C244F/EUR-2B52R; FMD-3161F/FMD-4303R
Received for sequencing:	16/04/2024
Created:	19/04/2024
Last updated:	19/04/2024
VIBASys IDs: sample 55081, genome 55082, sequence viba_55083, sequencing info 55084	

Most Closely Related Sequences

sequence	virus name	Host	% Id.	# Ambig.	serotype	topotype	lineage	sublineage
viba_55099	UGA/11/2024		100.0	0	O	EA-2		
viba_55087	UGA/8/2024		100.0	0	O	EA-2		
viba_55095	UGA/10/2024		99.8	0	O	EA-2		
viba_55107	UGA/13/2024		99.8	0	O	EA-2		
viba_55091	UGA/9/2024		99.8	0	O	EA-2		
viba_55119	UGA/16/2024		99.7	0	O	EA-2		
viba_55115	UGA/15/2024		99.5	0	O	EA-2		
viba_55123	UGA/17/2024		99.5	0	O	EA-2		
viba_55103	UGA/12/2024		99.5	0	O	EA-2		
viba_55111	UGA/14/2024		99.5	0	O	EA-2		

Most Closely Related Prototype Sequences

see <http://www.wrlfmd.org/fmdv-genome/fmd-prototype-strains>

sequence	virus name	Host	% Id.	# Ambig.	serotype	topotype	lineage	sublineage
viba_263	TAN/2/2004	bovine	91.8	0	O	EA-2		
viba_85	UGA/3/2002		88.6	0	O	EA-2		
viba_74	KEN/5/2002	bovine	88.2	0	O	EA-2		
viba_221	MAL/1/98		87.7	0	O	EA-2		
viba_38646	SYR/18/62		83.7	0	O	WCSA-1	Syr-62	
viba_35331	SRL/1/78		83.7	0	O	WCSA-1	Srl-77	
viba_27877	SRL/2/97	bovine	83.5	0	O	ME-SA	Srl-97	
viba_1893	K40/84	bovine	83.4	0	O	EA-1		
viba_541	OMN/7/2001	bovine	83.3	0	O	ME-SA	Ind-2001	b
viba_523	K83/79		83.2	0	O	EA-1		

Virus sample name:	UGA/8/2024
Sender reference:	235
Location of origin:	Mbarara district, Western region
Country of origin:	Uganda
Date of collection:	14/02/2024
Host species:	
Serotype:	O
Topotype:	EA-2
Lineage:	
Sublineage:	
Sequence length:	633
Ambiguities:	0
Material submitted for sequencing:	WRL-LFBK1
Harvest date of material:	05/04/2024
Primers:	O-1C244F/EUR-2B52R; FMD-3161F/FMD-4303R
Received for sequencing:	16/04/2024
Created:	19/04/2024
Last updated:	19/04/2024

VIBASys IDs: sample 55085, genome 55086, sequence viba_55087, sequencing info 55088

Most Closely Related Sequences

sequence	virus name	Host	% Id.	# Ambig.	serotype	topotype	lineage	sublineage
viba_55099	UGA/11/2024		100.0	0	O	EA-2		
viba_55083	UGA/7/2024		100.0	0	O	EA-2		
viba_55095	UGA/10/2024		99.8	0	O	EA-2		
viba_55107	UGA/13/2024		99.8	0	O	EA-2		
viba_55091	UGA/9/2024		99.8	0	O	EA-2		
viba_55119	UGA/16/2024		99.7	0	O	EA-2		
viba_55115	UGA/15/2024		99.5	0	O	EA-2		
viba_55123	UGA/17/2024		99.5	0	O	EA-2		
viba_55103	UGA/12/2024		99.5	0	O	EA-2		
viba_55111	UGA/14/2024		99.5	0	O	EA-2		

Most Closely Related Prototype Sequences

see <http://www.wrlfmd.org/fmdv-genome/fmd-prototype-strains>

sequence	virus name	Host	% Id.	# Ambig.	serotype	topotype	lineage	sublineage
viba_263	TAN/2/2004	bovine	91.8	0	O	EA-2		
viba_85	UGA/3/2002		88.6	0	O	EA-2		
viba_74	KEN/5/2002	bovine	88.2	0	O	EA-2		
viba_221	MAL/1/98		87.7	0	O	EA-2		
viba_38646	SYR/18/62		83.7	0	O	WCSA-1	Syr-62	
viba_35331	SRL/1/78		83.7	0	O	WCSA-1	Srl-77	
viba_27877	SRL/2/97	bovine	83.5	0	O	ME-SA	Srl-97	
viba_1893	K40/84	bovine	83.4	0	O	EA-1		
viba_541	OMN/7/2001	bovine	83.3	0	O	ME-SA	Ind-2001	b
viba_523	K83/79		83.2	0	O	EA-1		

Virus sample name:	UGA/9/2024
Sender reference:	236
Location of origin:	Mbarara district, Western region
Country of origin:	Uganda
Date of collection:	14/02/2024
Host species:	
Serotype:	O
Topotype:	EA-2
Lineage:	
Sublineage:	
Sequence length:	633
Ambiguities:	0
Material submitted for sequencing:	WRL-LFBK1
Harvest date of material:	05/04/2024
Primers:	O-1C244F/EUR-2B52R; FMD-3161F/FMD-4303R
Received for sequencing:	16/04/2024
Created:	19/04/2024
Last updated:	19/04/2024

VIBASys IDs: sample 55089, genome 55090, sequence viba_55091, sequencing info 55092

Most Closely Related Sequences

sequence	virus name	Host	% Id.	# Ambig.	serotype	topotype	lineage	sublineage
viba_55099	UGA/11/2024		99.8	0	O	EA-2		
viba_55087	UGA/8/2024		99.8	0	O	EA-2		
viba_55083	UGA/7/2024		99.8	0	O	EA-2		
viba_55095	UGA/10/2024		99.7	0	O	EA-2		
viba_55107	UGA/13/2024		99.7	0	O	EA-2		
viba_55119	UGA/16/2024		99.5	0	O	EA-2		
viba_55115	UGA/15/2024		99.4	0	O	EA-2		
viba_55123	UGA/17/2024		99.4	0	O	EA-2		
viba_55103	UGA/12/2024		99.4	0	O	EA-2		
viba_55111	UGA/14/2024		99.4	0	O	EA-2		

Most Closely Related Prototype Sequences

see <http://www.wrlfmd.org/fmdv-genome/fmd-prototype-strains>

sequence	virus name	Host	% Id.	# Ambig.	serotype	topotype	lineage	sublineage
viba_263	TAN/2/2004	bovine	91.6	0	O	EA-2		
viba_85	UGA/3/2002		88.5	0	O	EA-2		
viba_74	KEN/5/2002	bovine	87.6	0	O	EA-2		
viba_221	MAL/1/98		87.1	0	O	EA-2		
viba_35331	SRL/1/78		83.6	0	O	WCSA-1	Srl-77	
viba_38646	SYR/18/62		83.2	0	O	WCSA-1	Syr-62	
viba_541	OMN/7/2001	bovine	83.1	0	O	ME-SA	Ind-2001	b
viba_523	K83/79		83.0	0	O	EA-1		
viba_293	BHU/3/2009	cattle	83.0	0	O	ME-SA	Ind-2001	d
viba_27877	SRL/2/97	bovine	82.9	0	O	ME-SA	Srl-97	

Virus sample name:	UGA/10/2024
Sender reference:	237
Location of origin:	Mbarara district, Western region
Country of origin:	Uganda
Date of collection:	14/02/2024
Host species:	
Serotype:	O
Topotype:	EA-2
Lineage:	
Sublineage:	
Sequence length:	633
Ambiguities:	0
Material submitted for sequencing:	WRL-LFBK1
Harvest date of material:	05/04/2024
Primers:	O-1C244F/EUR-2B52R; FMD-3161F/FMD-4303R
Received for sequencing:	16/04/2024
Created:	19/04/2024
Last updated:	19/04/2024

VIBASys IDs: sample 55093, genome 55094, sequence viba_55095, sequencing info 55096

Most Closely Related Sequences

sequence	virus name	Host	% Id.	# Ambig.	serotype	topotype	lineage	sublineage
viba_55107	UGA/13/2024		100.0	0	O	EA-2		
viba_55099	UGA/11/2024		99.8	0	O	EA-2		
viba_55087	UGA/8/2024		99.8	0	O	EA-2		
viba_55119	UGA/16/2024		99.8	0	O	EA-2		
viba_55083	UGA/7/2024		99.8	0	O	EA-2		
viba_55115	UGA/15/2024		99.7	0	O	EA-2		
viba_55123	UGA/17/2024		99.7	0	O	EA-2		
viba_55091	UGA/9/2024		99.7	0	O	EA-2		
viba_55103	UGA/12/2024		99.7	0	O	EA-2		
viba_55111	UGA/14/2024		99.7	0	O	EA-2		

Most Closely Related Prototype Sequences

see <http://www.wrlfmd.org/fmdv-genome/fmd-prototype-strains>

sequence	virus name	Host	% Id.	# Ambig.	serotype	topotype	lineage	sublineage
viba_263	TAN/2/2004	bovine	91.6	0	O	EA-2		
viba_85	UGA/3/2002		88.5	0	O	EA-2		
viba_74	KEN/5/2002	bovine	88.0	0	O	EA-2		
viba_221	MAL/1/98		87.5	0	O	EA-2		
viba_27877	SRL/2/97	bovine	83.6	0	O	ME-SA	Srl-97	
viba_35331	SRL/1/78		83.6	0	O	WCSA-1	Srl-77	
viba_38646	SYR/18/62		83.5	0	O	WCSA-1	Syr-62	
viba_1893	K40/84	bovine	83.3	0	O	EA-1		
viba_541	OMN/7/2001	bovine	83.1	0	O	ME-SA	Ind-2001	b
viba_523	K83/79		83.0	0	O	EA-1		

Virus sample name:	UGA/11/2024
Sender reference:	238
Location of origin:	Mbarara district, Western region
Country of origin:	Uganda
Date of collection:	14/02/2024
Host species:	
Serotype:	O
Topotype:	EA-2
Lineage:	
Sublineage:	
Sequence length:	633
Ambiguities:	0
Material submitted for sequencing:	WRL-LFBK1
Harvest date of material:	05/04/2024
Primers:	O-1C244F/EUR-2B52R; FMD-3161F/FMD-4303R
Received for sequencing:	16/04/2024
Created:	19/04/2024
Last updated:	19/04/2024
VIBASys IDs: sample 55097, genome 55098, sequence viba_55099, sequencing info 55100	

Most Closely Related Sequences

sequence	virus name	Host	% Id.	# Ambig.	serotype	topotype	lineage	sublineage
viba_55087	UGA/8/2024		100.0	0	O	EA-2		
viba_55083	UGA/7/2024		100.0	0	O	EA-2		
viba_55095	UGA/10/2024		99.8	0	O	EA-2		
viba_55107	UGA/13/2024		99.8	0	O	EA-2		
viba_55091	UGA/9/2024		99.8	0	O	EA-2		
viba_55119	UGA/16/2024		99.7	0	O	EA-2		
viba_55115	UGA/15/2024		99.5	0	O	EA-2		
viba_55123	UGA/17/2024		99.5	0	O	EA-2		
viba_55103	UGA/12/2024		99.5	0	O	EA-2		
viba_55111	UGA/14/2024		99.5	0	O	EA-2		

Most Closely Related Prototype Sequences

see <http://www.wrlfmd.org/fmdv-genome/fmd-prototype-strains>

sequence	virus name	Host	% Id.	# Ambig.	serotype	topotype	lineage	sublineage
viba_263	TAN/2/2004	bovine	91.8	0	O	EA-2		
viba_85	UGA/3/2002		88.6	0	O	EA-2		
viba_74	KEN/5/2002	bovine	88.2	0	O	EA-2		
viba_221	MAL/1/98		87.7	0	O	EA-2		
viba_38646	SYR/18/62		83.7	0	O	WCSA-1	Syr-62	
viba_35331	SRL/1/78		83.7	0	O	WCSA-1	Srl-77	
viba_27877	SRL/2/97	bovine	83.5	0	O	ME-SA	Srl-97	
viba_1893	K40/84	bovine	83.4	0	O	EA-1		
viba_541	OMN/7/2001	bovine	83.3	0	O	ME-SA	Ind-2001	b
viba_523	K83/79		83.2	0	O	EA-1		

Virus sample name:	UGA/12/2024
Sender reference:	239
Location of origin:	Mbarara district, Western region
Country of origin:	Uganda
Date of collection:	14/02/2024
Host species:	
Serotype:	O
Topotype:	EA-2
Lineage:	
Sublineage:	
Sequence length:	633
Ambiguities:	0
Material submitted for sequencing:	WRL-LFBK1
Harvest date of material:	05/04/2024
Primers:	O-1C244F/EUR-2B52R; FMD-3161F/FMD-4303R
Received for sequencing:	16/04/2024
Created:	19/04/2024
Last updated:	19/04/2024

VIBASys IDs: sample 55101, genome 55102, sequence viba_55103, sequencing info 55104

Most Closely Related Sequences

sequence	virus name	Host	% Id.	# Ambig.	serotype	topotype	lineage	sublineage
viba_55123	UGA/17/2024		100.0	0	O	EA-2		
viba_55095	UGA/10/2024		99.7	0	O	EA-2		
viba_55107	UGA/13/2024		99.7	0	O	EA-2		
viba_55099	UGA/11/2024		99.5	0	O	EA-2		
viba_55087	UGA/8/2024		99.5	0	O	EA-2		
viba_55119	UGA/16/2024		99.5	0	O	EA-2		
viba_55083	UGA/7/2024		99.5	0	O	EA-2		
viba_55115	UGA/15/2024		99.4	0	O	EA-2		
viba_55091	UGA/9/2024		99.4	0	O	EA-2		
viba_55111	UGA/14/2024		99.4	0	O	EA-2		

Most Closely Related Prototype Sequences

see <http://www.wrlfmd.org/fmdv-genome/fmd-prototype-strains>

sequence	virus name	Host	% Id.	# Ambig.	serotype	topotype	lineage	sublineage
viba_263	TAN/2/2004	bovine	91.3	0	O	EA-2		
viba_85	UGA/3/2002		88.2	0	O	EA-2		
viba_74	KEN/5/2002	bovine	87.7	0	O	EA-2		
viba_221	MAL/1/98		87.2	0	O	EA-2		
viba_27877	SRL/2/97	bovine	83.6	0	O	ME-SA	Srl-97	
viba_35331	SRL/1/78		83.6	0	O	WCSA-1	Srl-77	
viba_38646	SYR/18/62		83.5	0	O	WCSA-1	Syr-62	
viba_541	OMN/7/2001	bovine	83.1	0	O	ME-SA	Ind-2001	b
viba_1893	K40/84	bovine	83.0	0	O	EA-1		
viba_359	Manisa/TUR/69		82.9	0	O	ME-SA		

Virus sample name:	UGA/13/2024
Sender reference:	240
Location of origin:	Mbarara district, Western region
Country of origin:	Uganda
Date of collection:	14/02/2024
Host species:	
Serotype:	O
Topotype:	EA-2
Lineage:	
Sublineage:	
Sequence length:	633
Ambiguities:	0
Material submitted for sequencing:	WRL-LFBK1
Harvest date of material:	05/04/2024
Primers:	O-1C244F/EUR-2B52R; FMD-3161F/FMD-4303R
Received for sequencing:	16/04/2024
Created:	19/04/2024
Last updated:	19/04/2024

VIBASys IDs: sample 55105, genome 55106, sequence viba_55107, sequencing info 55108

Most Closely Related Sequences

sequence	virus name	Host	% Id.	# Ambig.	serotype	topotype	lineage	sublineage
viba_55095	UGA/10/2024		100.0	0	O	EA-2		
viba_55099	UGA/11/2024		99.8	0	O	EA-2		
viba_55087	UGA/8/2024		99.8	0	O	EA-2		
viba_55119	UGA/16/2024		99.8	0	O	EA-2		
viba_55083	UGA/7/2024		99.8	0	O	EA-2		
viba_55115	UGA/15/2024		99.7	0	O	EA-2		
viba_55123	UGA/17/2024		99.7	0	O	EA-2		
viba_55091	UGA/9/2024		99.7	0	O	EA-2		
viba_55103	UGA/12/2024		99.7	0	O	EA-2		
viba_55111	UGA/14/2024		99.7	0	O	EA-2		

Most Closely Related Prototype Sequences

see <http://www.wrlfmd.org/fmdv-genome/fmd-prototype-strains>

sequence	virus name	Host	% Id.	# Ambig.	serotype	topotype	lineage	sublineage
viba_263	TAN/2/2004	bovine	91.6	0	O	EA-2		
viba_85	UGA/3/2002		88.5	0	O	EA-2		
viba_74	KEN/5/2002	bovine	88.0	0	O	EA-2		
viba_221	MAL/1/98		87.5	0	O	EA-2		
viba_27877	SRL/2/97	bovine	83.6	0	O	ME-SA	Srl-97	
viba_35331	SRL/1/78		83.6	0	O	WCSEA-1	Srl-77	
viba_38646	SYR/18/62		83.5	0	O	WCSEA-1	Syr-62	
viba_1893	K40/84	bovine	83.3	0	O	EA-1		
viba_541	OMN/7/2001	bovine	83.1	0	O	ME-SA	Ind-2001	b
viba_523	K83/79		83.0	0	O	EA-1		

Virus sample name:	UGA/14/2024
Sender reference:	241
Location of origin:	Sheema district, Western region
Country of origin:	Uganda
Date of collection:	16/02/2024
Host species:	
Serotype:	O
Topotype:	EA-2
Lineage:	
Sublineage:	
Sequence length:	633
Ambiguities:	0
Material submitted for sequencing:	WRL-LFBK1
Harvest date of material:	05/04/2024
Primers:	O-1C244F/EUR-2B52R; FMD-3161F/FMD-4303R
Received for sequencing:	16/04/2024
Created:	19/04/2024
Last updated:	19/04/2024
VIBASys IDs: sample 55109, genome 55110, sequence viba_55111, sequencing info 55112	

Most Closely Related Sequences

sequence	virus name	Host	% Id.	# Ambig.	serotype	topotype	lineage	sublineage
viba_55115	UGA/15/2024		100.0	0	O	EA-2		
viba_55095	UGA/10/2024		99.7	0	O	EA-2		
viba_55107	UGA/13/2024		99.7	0	O	EA-2		
viba_55099	UGA/11/2024		99.5	0	O	EA-2		
viba_55087	UGA/8/2024		99.5	0	O	EA-2		
viba_55119	UGA/16/2024		99.5	0	O	EA-2		
viba_55083	UGA/7/2024		99.5	0	O	EA-2		
viba_55123	UGA/17/2024		99.4	0	O	EA-2		
viba_55091	UGA/9/2024		99.4	0	O	EA-2		
viba_55103	UGA/12/2024		99.4	0	O	EA-2		

Most Closely Related Prototype Sequences

see <http://www.wrlfmd.org/fmdv-genome/fmd-prototype-strains>

sequence	virus name	Host	% Id.	# Ambig.	serotype	topotype	lineage	sublineage
viba_263	TAN/2/2004	bovine	91.6	0	O	EA-2		
viba_85	UGA/3/2002		88.2	0	O	EA-2		
viba_74	KEN/5/2002	bovine	88.0	0	O	EA-2		
viba_221	MAL/1/98		87.5	0	O	EA-2		
viba_38646	SYR/18/62		83.4	0	O	WCSA-1	Syr-62	
viba_35331	SRL/1/78		83.4	0	O	WCSA-1	Srl-77	
viba_27877	SRL/2/97	bovine	83.3	0	O	ME-SA	Srl-97	
viba_1893	K40/84	bovine	83.3	0	O	EA-1		
viba_541	OMN/7/2001	bovine	83.1	0	O	ME-SA	Ind-2001	b
viba_523	K83/79		83.0	0	O	EA-1		

Virus sample name:	UGA/15/2024
Sender reference:	242
Location of origin:	Sheema district, Western region
Country of origin:	Uganda
Date of collection:	16/02/2024
Host species:	
Serotype:	O
Topotype:	EA-2
Lineage:	
Sublineage:	
Sequence length:	633
Ambiguities:	0
Material submitted for sequencing:	WRL-LFBK1
Harvest date of material:	09/04/2024
Primers:	O-1C244F/EUR-2B52R; FMD-3161F/FMD-4303R
Received for sequencing:	16/04/2024
Created:	19/04/2024
Last updated:	19/04/2024

VIBASys IDs: sample 55113, genome 55114, sequence viba_55115, sequencing info 55116

Most Closely Related Sequences

sequence	virus name	Host	% Id.	# Ambig.	serotype	topotype	lineage	sublineage
viba_55111	UGA/14/2024		100.0	0	O	EA-2		
viba_55095	UGA/10/2024		99.7	0	O	EA-2		
viba_55107	UGA/13/2024		99.7	0	O	EA-2		
viba_55099	UGA/11/2024		99.5	0	O	EA-2		
viba_55087	UGA/8/2024		99.5	0	O	EA-2		
viba_55119	UGA/16/2024		99.5	0	O	EA-2		
viba_55083	UGA/7/2024		99.5	0	O	EA-2		
viba_55123	UGA/17/2024		99.4	0	O	EA-2		
viba_55091	UGA/9/2024		99.4	0	O	EA-2		
viba_55103	UGA/12/2024		99.4	0	O	EA-2		

Most Closely Related Prototype Sequences

see <http://www.wrlfmd.org/fmdv-genome/fmd-prototype-strains>

sequence	virus name	Host	% Id.	# Ambig.	serotype	topotype	lineage	sublineage
viba_263	TAN/2/2004	bovine	91.6	0	O	EA-2		
viba_85	UGA/3/2002		88.2	0	O	EA-2		
viba_74	KEN/5/2002	bovine	88.0	0	O	EA-2		
viba_221	MAL/1/98		87.5	0	O	EA-2		
viba_38646	SYR/18/62		83.4	0	O	WCSA-1	Syr-62	
viba_35331	SRL/1/78		83.4	0	O	WCSA-1	Srl-77	
viba_27877	SRL/2/97	bovine	83.3	0	O	ME-SA	Srl-97	
viba_1893	K40/84	bovine	83.3	0	O	EA-1		
viba_541	OMN/7/2001	bovine	83.1	0	O	ME-SA	Ind-2001	b
viba_523	K83/79		83.0	0	O	EA-1		

Virus sample name:	UGA/16/2024
Sender reference:	243
Location of origin:	Sheema district, Western region
Country of origin:	Uganda
Date of collection:	16/02/2024
Host species:	
Serotype:	O
Topotype:	EA-2
Lineage:	
Sublineage:	
Sequence length:	633
Ambiguities:	0
Material submitted for sequencing:	WRL-LFBK1
Harvest date of material:	09/04/2024
Primers:	O-1C244F/EUR-2B52R; FMD-3161F/FMD-4303R
Received for sequencing:	16/04/2024
Created:	19/04/2024
Last updated:	19/04/2024
VIBASys IDs: sample 55117, genome 55118, sequence viba_55119, sequencing info 55120	

Most Closely Related Sequences

sequence	virus name	Host	% Id.	# Ambig.	serotype	topotype	lineage	sublineage
viba_55095	UGA/10/2024		99.8	0	O	EA-2		
viba_55107	UGA/13/2024		99.8	0	O	EA-2		
viba_55099	UGA/11/2024		99.7	0	O	EA-2		
viba_55087	UGA/8/2024		99.7	0	O	EA-2		
viba_55083	UGA/7/2024		99.7	0	O	EA-2		
viba_55115	UGA/15/2024		99.5	0	O	EA-2		
viba_55123	UGA/17/2024		99.5	0	O	EA-2		
viba_55091	UGA/9/2024		99.5	0	O	EA-2		
viba_55103	UGA/12/2024		99.5	0	O	EA-2		
viba_55111	UGA/14/2024		99.5	0	O	EA-2		

Most Closely Related Prototype Sequences

see <http://www.wrlfmd.org/fmdv-genome/fmd-prototype-strains>

sequence	virus name	Host	% Id.	# Ambig.	serotype	topotype	lineage	sublineage
viba_263	TAN/2/2004	bovine	91.5	0	O	EA-2		
viba_85	UGA/3/2002		88.6	0	O	EA-2		
viba_74	KEN/5/2002	bovine	88.2	0	O	EA-2		
viba_221	MAL/1/98		87.7	0	O	EA-2		
viba_38646	SYR/18/62		83.7	0	O	WCSA-1	Syr-62	
viba_35331	SRL/1/78		83.7	0	O	WCSA-1	Srl-77	
viba_27877	SRL/2/97	bovine	83.5	0	O	ME-SA	Srl-97	
viba_1893	K40/84	bovine	83.4	0	O	EA-1		
viba_541	OMN/7/2001	bovine	83.3	0	O	ME-SA	Ind-2001	b
viba_523	K83/79		83.2	0	O	EA-1		

Virus sample name:	UGA/17/2024
Sender reference:	244
Location of origin:	Sheema district, Western region
Country of origin:	Uganda
Date of collection:	16/02/2024
Host species:	
Serotype:	O
Topotype:	EA-2
Lineage:	
Sublineage:	
Sequence length:	633
Ambiguities:	0
Material submitted for sequencing:	WRL-LFBK1
Harvest date of material:	09/04/2024
Primers:	O-1C244F/EUR-2B52R; FMD-3161F/FMD-4303R
Received for sequencing:	16/04/2024
Created:	19/04/2024
Last updated:	19/04/2024
VIBASys IDs: sample 55121, genome 55122, sequence viba_55123, sequencing info 55124	

Most Closely Related Sequences

sequence	virus name	Host	% Id.	# Ambig.	serotype	topotype	lineage	sublineage
viba_55103	UGA/12/2024		100.0	0	O	EA-2		
viba_55095	UGA/10/2024		99.7	0	O	EA-2		
viba_55107	UGA/13/2024		99.7	0	O	EA-2		
viba_55099	UGA/11/2024		99.5	0	O	EA-2		
viba_55087	UGA/8/2024		99.5	0	O	EA-2		
viba_55119	UGA/16/2024		99.5	0	O	EA-2		
viba_55083	UGA/7/2024		99.5	0	O	EA-2		
viba_55115	UGA/15/2024		99.4	0	O	EA-2		
viba_55091	UGA/9/2024		99.4	0	O	EA-2		
viba_55111	UGA/14/2024		99.4	0	O	EA-2		

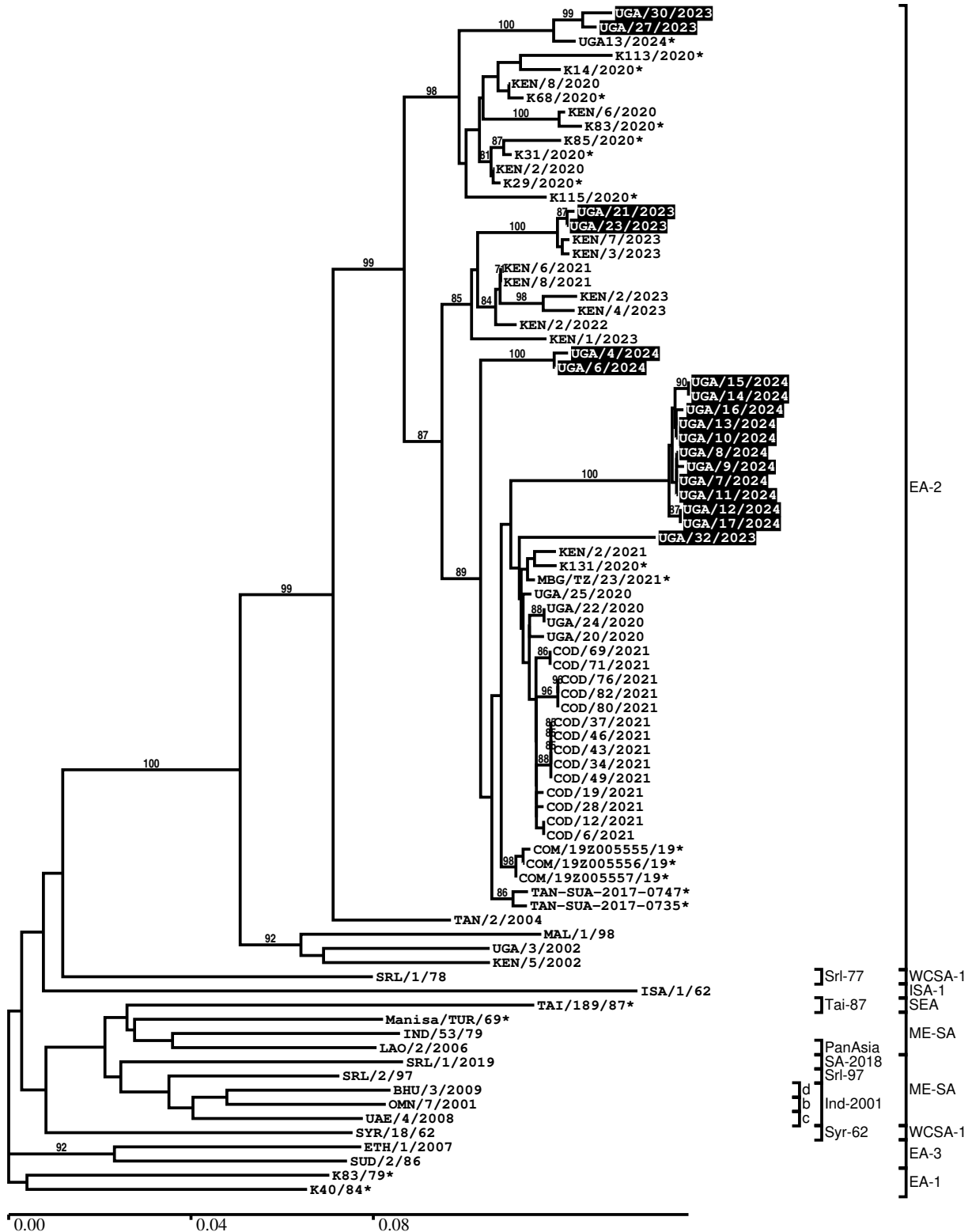
Most Closely Related Prototype Sequences

see <http://www.wrlfmd.org/fmdv-genome/fmd-prototype-strains>

sequence	virus name	Host	% Id.	# Ambig.	serotype	topotype	lineage	sublineage
viba_263	TAN/2/2004	bovine	91.3	0	O	EA-2		
viba_85	UGA/3/2002		88.2	0	O	EA-2		
viba_74	KEN/5/2002	bovine	87.7	0	O	EA-2		
viba_221	MAL/1/98		87.2	0	O	EA-2		
viba_27877	SRL/2/97	bovine	83.6	0	O	ME-SA	Srl-97	
viba_35331	SRL/1/78		83.6	0	O	WCSEA-1	Srl-77	
viba_38646	SYR/18/62		83.5	0	O	WCSEA-1	Syr-62	
viba_541	OMN/7/2001	bovine	83.1	0	O	ME-SA	Ind-2001	b
viba_1893	K40/84	bovine	83.0	0	O	EA-1		
viba_359	Manisa/TUR/69		82.9	0	O	ME-SA		

Report on FMDV O in Uganda in 2023, 2024

Batch: WRLFMD/2024/000004



*, not a WRLFMD Reference Number

Analysis Parameters

VP1 subsequence extractor:	vp1_O
Query sequence set:	WRLFMD/2024/000004-Uganda-O (18 sequences)
Sequence database set:	allseqs_O (6217 sequences)
Prototype sequence set:	!prototypes_O (58 sequences)
Number of related sequences reported:	10
Minimal VP1 subsequence match length	600
Sequence alignment method:	muscle (default parameters)
Sequence alignment length:	636
Phylogeny reconstruction method:	fdnadist, fneighbor
Number of bootstrap samples:	1000
Random seed for bootstrapping:	1
Displaying bootstrap values above:	70.0%
Number of sequences in tree capped at:	100
Number of prototype sequences in tree:	18
VIBASys version:	reflabs-1.1.2

Sequences in the Phylogenetic Tree

All sequences in the tree are in taxonomic group FMDV/O

label	accession	host(s)	lab	country	taxonomic information
UGA/30/2023	n/a	bovine	WRLFMD	Uganda	EA-2
UGA/27/2023	n/a	bovine	WRLFMD	Uganda	EA-2
UGA13/2024*	n/a	bovine	BVI	Uganda	EA-2
K113/2020*	OP184905	bovine	EMBAKASI	Kenya	EA-2
K14/2020*	OP184908	bovine	EMBAKASI	Kenya	EA-2
KEN/8/2020	n/a	cattle	WRLFMD	Kenya	EA-2
K68/2020*	OP184909	bovine	EMBAKASI	Kenya	EA-2
KEN/6/2020	n/a	cattle	WRLFMD	Kenya	EA-2
K83/2020*	OP184904	bovine	EMBAKASI	Kenya	EA-2
K85/2020*	OP184907	bovine	EMBAKASI	Kenya	EA-2
K31/2020*	OP184906	bovine	EMBAKASI	Kenya	EA-2
KEN/2/2020	n/a	cattle	WRLFMD	Kenya	EA-2
K29/2020*	OP184903	bovine	EMBAKASI	Kenya	EA-2
K115/2020*	OP184902	bovine	EMBAKASI	Kenya	EA-2
UGA/21/2023	n/a	bovine	WRLFMD	Uganda	EA-2
UGA/23/2023	n/a	bovine	WRLFMD	Uganda	EA-2
KEN/7/2023	n/a	cattle	WRLFMD	Kenya	EA-2
KEN/3/2023	n/a	cattle	WRLFMD	Kenya	EA-2
KEN/6/2021	n/a	cattle	WRLFMD	Kenya	EA-2
KEN/8/2021	n/a	cattle	WRLFMD	Kenya	EA-2
KEN/2/2023	n/a	cattle	WRLFMD	Kenya	EA-2
KEN/4/2023	n/a	cattle	WRLFMD	Kenya	EA-2
KEN/2/2022	n/a	cattle	WRLFMD	Kenya	EA-2
KEN/1/2023	n/a	cattle	WRLFMD	Kenya	EA-2
UGA/4/2024	n/a	bovine	WRLFMD	Uganda	EA-2
UGA/6/2024	n/a	bovine	WRLFMD	Uganda	EA-2
UGA/15/2024	n/a	n/a	WRLFMD	Uganda	EA-2
UGA/14/2024	n/a	n/a	WRLFMD	Uganda	EA-2
UGA/16/2024	n/a	n/a	WRLFMD	Uganda	EA-2
UGA/13/2024	n/a	n/a	WRLFMD	Uganda	EA-2
UGA/10/2024	n/a	n/a	WRLFMD	Uganda	EA-2
UGA/8/2024	n/a	n/a	WRLFMD	Uganda	EA-2
UGA/9/2024	n/a	n/a	WRLFMD	Uganda	EA-2
UGA/7/2024	n/a	n/a	WRLFMD	Uganda	EA-2
UGA/11/2024	n/a	n/a	WRLFMD	Uganda	EA-2
UGA/12/2024	n/a	n/a	WRLFMD	Uganda	EA-2

continued on next page

label	accession	host(s)	lab	country	taxonomic information
UGA/17/2024	n/a	n/a	WRLFMD	Uganda	EA-2
UGA/32/2023	n/a	bovine	WRLFMD	Uganda	EA-2
KEN/2/2021	n/a	cattle	WRLFMD	Kenya	EA-2
K131/2020*	OP184912	bovine	EMBAKASI	Kenya	EA-2
MBG/TZ/23/2021*	OQ615919	zebu cattle	SUA	Tanzania	EA-2
UGA/25/2020	n/a	cattle	WRLFMD	Uganda	EA-2
UGA/22/2020	n/a	cattle	WRLFMD	Uganda	EA-2
UGA/24/2020	n/a	cattle	WRLFMD	Uganda	EA-2
UGA/20/2020	n/a	cattle	WRLFMD	Uganda	EA-2
COD/69/2021	n/a	cattle	WRLFMD	Democratic Republic of the Congo	EA-2
COD/71/2021	n/a	cattle	WRLFMD	Democratic Republic of the Congo	EA-2
COD/76/2021	n/a	cattle	WRLFMD	Democratic Republic of the Congo	EA-2
COD/82/2021	n/a	cattle	WRLFMD	Democratic Republic of the Congo	EA-2
COD/80/2021	n/a	cattle	WRLFMD	Democratic Republic of the Congo	EA-2
COD/37/2021	n/a	cattle	WRLFMD	Democratic Republic of the Congo	EA-2
COD/46/2021	n/a	cattle	WRLFMD	Democratic Republic of the Congo	EA-2
COD/43/2021	n/a	cattle	WRLFMD	Democratic Republic of the Congo	EA-2
COD/34/2021	n/a	cattle	WRLFMD	Democratic Republic of the Congo	EA-2
COD/49/2021	n/a	cattle	WRLFMD	Democratic Republic of the Congo	EA-2
COD/19/2021	n/a	cattle	WRLFMD	Democratic Republic of the Congo	EA-2
COD/28/2021	n/a	cattle	WRLFMD	Democratic Republic of the Congo	EA-2
COD/12/2021	n/a	cattle	WRLFMD	Democratic Republic of the Congo	EA-2
COD/6/2021	n/a	cattle	WRLFMD	Democratic Republic of the Congo	EA-2
COM/19Z005555/19*	n/a	cattle	ANSES	Comoros	EA-2
COM/19Z005556/19*	n/a	cattle	ANSES	Comoros	EA-2
COM/19Z005557/19*	n/a	cattle	ANSES	Comoros	EA-2
TAN-SUA-2017-0747*	n/a	cattle	SUA	Tanzania	EA-2
TAN-SUA-2017-0735*	n/a	cattle	SUA	Tanzania	EA-2
TAN/2/2004	KF561679	bovine	WRLFMD	Tanzania	EA-2
MAL/1/98	DQ165074	n/a	WRLFMD	Malawi	EA-2
UGA/3/2002	DQ165077	n/a	WRLFMD	Uganda	EA-2
KEN/5/2002	DQ165073	bovine	WRLFMD	Kenya	EA-2
SRL/1/78	MK390916	n/a	WRLFMD	Sri Lanka	WCSA-1/Srl-77
ISA/1/62	AJ303500	n/a	WRLFMD	Indonesia	ISA-1
TAI/189/87*	KY091288	bovine	TRRL	Thailand	SEA/Tai-87
Manisa/TUR/69*	AY593823	n/a	PIADC	Turkiye	ME-SA
IND/53/79	AF292107	bovine	PD-FMD	India	ME-SA
LAO/2/2006	EU667451	cattle	WRLFMD	Laos	ME-SA/PanAsia
SRL/1/2019	n/a	cattle	WRLFMD	Sri Lanka	ME-SA/SA-2018
SRL/2/97	AJ303531	bovine	WRLFMD	Sri Lanka	ME-SA/Srl-97

continued on next page

label	accession	host(s)	lab	country	taxonomic information
BHU/3/2009	KM921814	cattle	WRLFMD	Bhutan	ME-SA/Ind-2001/d
OMN/7/2001	DQ164941	bovine	WRLFMD	Oman	ME-SA/Ind-2001/b
UAE/4/2008	KM921876	gazelle	WRLFMD	United Arab Emirates	ME-SA/Ind-2001/c
SYR/18/62	MK390935	n/a	WRLFMD	Syria	WCSA-1/Syr-62
ETH/1/2007	FJ798137	cattle	WRLFMD	Ethiopia	EA-3
SUD/2/86	DQ165075	bovine	WRLFMD	Sudan	EA-3
K83/79*	AJ303511	n/a	WRLFMD	Kenya	EA-1
K40/84*	KY091280	bovine	WRLFMD	Kenya	EA-1

*, not a WRLFMD Reference Number

n/a, not available