

# FAO World Reference Laboratory for Foot-and-Mouth Disease (WRLFMD)

## Genotyping Report

FMDV serotype: O  
Country: Oman  
Year: 2020, 2021  
Batch: WRLMEG/2023/00001C  
No. of sequences: 21  
Report date: 9th January 2023  
Report generated by: Nick Knowles  
Report checked by: Jemma Wadsworth

This report has been prepared on behalf of the Central Laboratory of Animal Health (Oman), the Sultan Qaboos University (Oman) and the European Union Reference Laboratory (EURL), FAO Reference Centre & OIE Reference Laboratory for Foot-and-Mouth Disease chez Agence nationale de sécurité sanitaire –ANSES, Maisons-Alfort, Île-de-France, France and covers VP1 sequences submitted to the WRLFMD on 06/01/2023.



Copyright © 2023 The Pirbright Institute, Ash Road, Pirbright, Woking GU24 0NF, United Kingdom.

www: <http://www.wrlfmd.org/>

email: [reporting@pirbright.ac.uk](mailto:reporting@pirbright.ac.uk)

The contents of this report should not be reproduced without permission.

Virus sample name:	OMN/22Z2043/2020_80
Sender reference:	OMN/22Z2043/2020_80
Location of origin:	Sohar, Al Batinah North
Country of origin:	Oman
Date of collection:	29/01/2020
Host species:	cattle
Serotype:	O
Topotype:	ME-SA
Lineage:	PanAsia-2
Sublineage:	ANT-10
Sequence length:	633
Ambiguities:	0
Material submitted for sequencing:	n/a
Harvest date of material:	n/a
Primers:	n/a
Received for sequencing:	n/a
Created:	09/01/2023
Last updated:	09/01/2023
VIBASys IDs: sample 52204, genome 52205, sequence viba_52206, sequencing info 52207	

### Most Closely Related Sequences

sequence	virus name	Host	% Id.	# Ambig.	serotype	topotype	lineage	sublineage
viba_52242	OMN/22Z1992/2020_11	cattle	100.0	0	O	ME-SA	PanAsia-2	ANT-10
viba_52218	OMN/22Z2046/2020_83	cattle	100.0	0	O	ME-SA	PanAsia-2	ANT-10
viba_52210	OMN/22Z2044/2020_81	cattle	100.0	0	O	ME-SA	PanAsia-2	ANT-10
viba_52214	OMN/22Z2045/2020_82	cattle	100.0	0	O	ME-SA	PanAsia-2	ANT-10
viba_52226	OMN/22Z2049/2020_86	cattle	100.0	0	O	ME-SA	PanAsia-2	ANT-10
viba_52238	OMN/22Z1991/2020_10	cattle	100.0	0	O	ME-SA	PanAsia-2	ANT-10
viba_52246	OMN/22Z1993/2020_12	cattle	100.0	0	O	ME-SA	PanAsia-2	ANT-10
viba_52234	OMN/22Z1990/2020_9	cattle	100.0	0	O	ME-SA	PanAsia-2	ANT-10
viba_52230	OMN/22Z2050/2020_87	cattle	100.0	0	O	ME-SA	PanAsia-2	ANT-10
viba_52222	OMN/22Z2047/2020_84	cattle	99.8	1	O	ME-SA	PanAsia-2	ANT-10

### Most Closely Related Prototype Sequences

see <http://www.wrlfmd.org/fmdv-genome/fmd-prototype-strains>

sequence	virus name	Host	% Id.	# Ambig.	serotype	topotype	lineage	sublineage
viba_719	IRN/88/2009		92.8	0	O	ME-SA	PanAsia-2	ANT-10
viba_766	IRN/31/2009	cattle	90.5	0	O	ME-SA	PanAsia-2	FAR-09
viba_491	TUR/257/2008		90.4	0	O	ME-SA	PanAsia-2	TER-08
viba_650	IRN/8/2005	ovine	90.2	0	O	ME-SA	PanAsia-2	
viba_666	IRN/18/2010	cattle	90.0	0	O	ME-SA	PanAsia-2	BAL-09
viba_354	PAK/16/2010	cattle	89.9	0	O	ME-SA	PanAsia-2	PUN-10
viba_505	TUR/264/2009		89.7	0	O	ME-SA	PanAsia-2	SAN-09
viba_27877	SRL/2/97	bovine	89.6	0	O	ME-SA	Srl-97	
viba_285	UKG/35/2001	porcine	89.6	0	O	ME-SA	PanAsia	
viba_860	IRN/6/2015	cattle	89.1	0	O	ME-SA	PanAsia-2	QOM-15

Virus sample name:	OMN/22Z2044/2020_81
Sender reference:	OMN/22Z2044/2020_81
Location of origin:	Sohar, Al Batinah North
Country of origin:	Oman
Date of collection:	29/01/2020
Host species:	cattle
Serotype:	O
Topotype:	ME-SA
Lineage:	PanAsia-2
Sublineage:	ANT-10
Sequence length:	633
Ambiguities:	0
Material submitted for sequencing:	n/a
Harvest date of material:	n/a
Primers:	n/a
Received for sequencing:	n/a
Created:	09/01/2023
Last updated:	09/01/2023
VIBASys IDs: sample 52208, genome 52209, sequence viba_52210, sequencing info 52211	

### Most Closely Related Sequences

sequence	virus name	Host	% Id.	# Ambig.	serotype	topotype	lineage	sublineage
viba_52242	OMN/22Z1992/2020_11	cattle	100.0	0	O	ME-SA	PanAsia-2	ANT-10
viba_52218	OMN/22Z2046/2020_83	cattle	100.0	0	O	ME-SA	PanAsia-2	ANT-10
viba_52214	OMN/22Z2045/2020_82	cattle	100.0	0	O	ME-SA	PanAsia-2	ANT-10
viba_52226	OMN/22Z2049/2020_86	cattle	100.0	0	O	ME-SA	PanAsia-2	ANT-10
viba_52238	OMN/22Z1991/2020_10	cattle	100.0	0	O	ME-SA	PanAsia-2	ANT-10
viba_52246	OMN/22Z1993/2020_12	cattle	100.0	0	O	ME-SA	PanAsia-2	ANT-10
viba_52234	OMN/22Z1990/2020_9	cattle	100.0	0	O	ME-SA	PanAsia-2	ANT-10
viba_52206	OMN/22Z2043/2020_80	cattle	100.0	0	O	ME-SA	PanAsia-2	ANT-10
viba_52230	OMN/22Z2050/2020_87	cattle	100.0	0	O	ME-SA	PanAsia-2	ANT-10
viba_52222	OMN/22Z2047/2020_84	cattle	99.8	1	O	ME-SA	PanAsia-2	ANT-10

### Most Closely Related Prototype Sequences

see <http://www.wrlfmd.org/fmdv-genome/fmd-prototype-strains>

sequence	virus name	Host	% Id.	# Ambig.	serotype	topotype	lineage	sublineage
viba_719	IRN/88/2009		92.8	0	O	ME-SA	PanAsia-2	ANT-10
viba_766	IRN/31/2009	cattle	90.5	0	O	ME-SA	PanAsia-2	FAR-09
viba_491	TUR/257/2008		90.4	0	O	ME-SA	PanAsia-2	TER-08
viba_650	IRN/8/2005	ovine	90.2	0	O	ME-SA	PanAsia-2	
viba_666	IRN/18/2010	cattle	90.0	0	O	ME-SA	PanAsia-2	BAL-09
viba_354	PAK/16/2010	cattle	89.9	0	O	ME-SA	PanAsia-2	PUN-10
viba_505	TUR/264/2009		89.7	0	O	ME-SA	PanAsia-2	SAN-09
viba_27877	SRL/2/97	bovine	89.6	0	O	ME-SA	Srl-97	
viba_285	UKG/35/2001	porcine	89.6	0	O	ME-SA	PanAsia	
viba_860	IRN/6/2015	cattle	89.1	0	O	ME-SA	PanAsia-2	QOM-15

Virus sample name:	OMN/22Z2045/2020_82
Sender reference:	OMN/22Z2045/2020_82
Location of origin:	Sohar, Al Batinah North
Country of origin:	Oman
Date of collection:	29/01/2020
Host species:	cattle
Serotype:	O
Topotype:	ME-SA
Lineage:	PanAsia-2
Sublineage:	ANT-10
Sequence length:	633
Ambiguities:	0
Material submitted for sequencing:	n/a
Harvest date of material:	n/a
Primers:	n/a
Received for sequencing:	n/a
Created:	09/01/2023
Last updated:	09/01/2023
VIBASys IDs: sample 52212, genome 52213, sequence viba_52214, sequencing info 52215	

### Most Closely Related Sequences

sequence	virus name	Host	% Id.	# Ambig.	serotype	topotype	lineage	sublineage
viba_52242	OMN/22Z1992/2020_11	cattle	100.0	0	O	ME-SA	PanAsia-2	ANT-10
viba_52218	OMN/22Z2046/2020_83	cattle	100.0	0	O	ME-SA	PanAsia-2	ANT-10
viba_52210	OMN/22Z2044/2020_81	cattle	100.0	0	O	ME-SA	PanAsia-2	ANT-10
viba_52226	OMN/22Z2049/2020_86	cattle	100.0	0	O	ME-SA	PanAsia-2	ANT-10
viba_52238	OMN/22Z1991/2020_10	cattle	100.0	0	O	ME-SA	PanAsia-2	ANT-10
viba_52246	OMN/22Z1993/2020_12	cattle	100.0	0	O	ME-SA	PanAsia-2	ANT-10
viba_52234	OMN/22Z1990/2020_9	cattle	100.0	0	O	ME-SA	PanAsia-2	ANT-10
viba_52206	OMN/22Z2043/2020_80	cattle	100.0	0	O	ME-SA	PanAsia-2	ANT-10
viba_52230	OMN/22Z2050/2020_87	cattle	100.0	0	O	ME-SA	PanAsia-2	ANT-10
viba_52222	OMN/22Z2047/2020_84	cattle	99.8	1	O	ME-SA	PanAsia-2	ANT-10

### Most Closely Related Prototype Sequences

see <http://www.wrlfmd.org/fmdv-genome/fmd-prototype-strains>

sequence	virus name	Host	% Id.	# Ambig.	serotype	topotype	lineage	sublineage
viba_719	IRN/88/2009		92.8	0	O	ME-SA	PanAsia-2	ANT-10
viba_766	IRN/31/2009	cattle	90.5	0	O	ME-SA	PanAsia-2	FAR-09
viba_491	TUR/257/2008		90.4	0	O	ME-SA	PanAsia-2	TER-08
viba_650	IRN/8/2005	ovine	90.2	0	O	ME-SA	PanAsia-2	
viba_666	IRN/18/2010	cattle	90.0	0	O	ME-SA	PanAsia-2	BAL-09
viba_354	PAK/16/2010	cattle	89.9	0	O	ME-SA	PanAsia-2	PUN-10
viba_505	TUR/264/2009		89.7	0	O	ME-SA	PanAsia-2	SAN-09
viba_27877	SRL/2/97	bovine	89.6	0	O	ME-SA	Srl-97	
viba_285	UKG/35/2001	porcine	89.6	0	O	ME-SA	PanAsia	
viba_860	IRN/6/2015	cattle	89.1	0	O	ME-SA	PanAsia-2	QOM-15

Virus sample name:	OMN/22Z2046/2020_83
Sender reference:	OMN/22Z2046/2020_83
Location of origin:	Sohar, Al Batinah North
Country of origin:	Oman
Date of collection:	29/01/2020
Host species:	cattle
Serotype:	O
Topotype:	ME-SA
Lineage:	PanAsia-2
Sublineage:	ANT-10
Sequence length:	633
Ambiguities:	0
Material submitted for sequencing:	n/a
Harvest date of material:	n/a
Primers:	n/a
Received for sequencing:	n/a
Created:	09/01/2023
Last updated:	09/01/2023
VIBASys IDs: sample 52216, genome 52217, sequence viba_52218, sequencing info 52219	

### Most Closely Related Sequences

sequence	virus name	Host	% Id.	# Ambig.	serotype	topotype	lineage	sublineage
viba_52242	OMN/22Z1992/2020_11	cattle	100.0	0	O	ME-SA	PanAsia-2	ANT-10
viba_52210	OMN/22Z2044/2020_81	cattle	100.0	0	O	ME-SA	PanAsia-2	ANT-10
viba_52214	OMN/22Z2045/2020_82	cattle	100.0	0	O	ME-SA	PanAsia-2	ANT-10
viba_52226	OMN/22Z2049/2020_86	cattle	100.0	0	O	ME-SA	PanAsia-2	ANT-10
viba_52238	OMN/22Z1991/2020_10	cattle	100.0	0	O	ME-SA	PanAsia-2	ANT-10
viba_52246	OMN/22Z1993/2020_12	cattle	100.0	0	O	ME-SA	PanAsia-2	ANT-10
viba_52234	OMN/22Z1990/2020_9	cattle	100.0	0	O	ME-SA	PanAsia-2	ANT-10
viba_52206	OMN/22Z2043/2020_80	cattle	100.0	0	O	ME-SA	PanAsia-2	ANT-10
viba_52230	OMN/22Z2050/2020_87	cattle	100.0	0	O	ME-SA	PanAsia-2	ANT-10
viba_52222	OMN/22Z2047/2020_84	cattle	99.8	1	O	ME-SA	PanAsia-2	ANT-10

### Most Closely Related Prototype Sequences

see <http://www.wrlfmd.org/fmdv-genome/fmd-prototype-strains>

sequence	virus name	Host	% Id.	# Ambig.	serotype	topotype	lineage	sublineage
viba_719	IRN/88/2009		92.8	0	O	ME-SA	PanAsia-2	ANT-10
viba_766	IRN/31/2009	cattle	90.5	0	O	ME-SA	PanAsia-2	FAR-09
viba_491	TUR/257/2008		90.4	0	O	ME-SA	PanAsia-2	TER-08
viba_650	IRN/8/2005	ovine	90.2	0	O	ME-SA	PanAsia-2	
viba_666	IRN/18/2010	cattle	90.0	0	O	ME-SA	PanAsia-2	BAL-09
viba_354	PAK/16/2010	cattle	89.9	0	O	ME-SA	PanAsia-2	PUN-10
viba_505	TUR/264/2009		89.7	0	O	ME-SA	PanAsia-2	SAN-09
viba_27877	SRL/2/97	bovine	89.6	0	O	ME-SA	Srl-97	
viba_285	UKG/35/2001	porcine	89.6	0	O	ME-SA	PanAsia	
viba_860	IRN/6/2015	cattle	89.1	0	O	ME-SA	PanAsia-2	QOM-15

Virus sample name:	OMN/22Z2047/2020_84
Sender reference:	OMN/22Z2047/2020_84
Location of origin:	Sohar, Al Batinah North
Country of origin:	Oman
Date of collection:	29/01/2020
Host species:	cattle
Serotype:	O
Topotype:	ME-SA
Lineage:	PanAsia-2
Sublineage:	ANT-10
Sequence length:	633
Ambiguities:	1
Material submitted for sequencing:	n/a
Harvest date of material:	n/a
Primers:	n/a
Received for sequencing:	n/a
Created:	09/01/2023
Last updated:	09/01/2023
VIBASys IDs: sample 52220, genome 52221, sequence viba_52222, sequencing info 52223	

### Most Closely Related Sequences

sequence	virus name	Host	% Id.	# Ambig.	serotype	topotype	lineage	sublineage
viba_52242	OMN/22Z1992/2020_11	cattle	99.8	0	O	ME-SA	PanAsia-2	ANT-10
viba_52218	OMN/22Z2046/2020_83	cattle	99.8	0	O	ME-SA	PanAsia-2	ANT-10
viba_52210	OMN/22Z2044/2020_81	cattle	99.8	0	O	ME-SA	PanAsia-2	ANT-10
viba_52214	OMN/22Z2045/2020_82	cattle	99.8	0	O	ME-SA	PanAsia-2	ANT-10
viba_52226	OMN/22Z2049/2020_86	cattle	99.8	0	O	ME-SA	PanAsia-2	ANT-10
viba_52238	OMN/22Z1991/2020_10	cattle	99.8	0	O	ME-SA	PanAsia-2	ANT-10
viba_52246	OMN/22Z1993/2020_12	cattle	99.8	0	O	ME-SA	PanAsia-2	ANT-10
viba_52234	OMN/22Z1990/2020_9	cattle	99.8	0	O	ME-SA	PanAsia-2	ANT-10
viba_52206	OMN/22Z2043/2020_80	cattle	99.8	0	O	ME-SA	PanAsia-2	ANT-10
viba_52230	OMN/22Z2050/2020_87	cattle	99.8	0	O	ME-SA	PanAsia-2	ANT-10

### Most Closely Related Prototype Sequences

see <http://www.wrlfmd.org/fmdv-genome/fmd-prototype-strains>

sequence	virus name	Host	% Id.	# Ambig.	serotype	topotype	lineage	sublineage
viba_719	IRN/88/2009		92.6	0	O	ME-SA	PanAsia-2	ANT-10
viba_766	IRN/31/2009	cattle	90.4	0	O	ME-SA	PanAsia-2	FAR-09
viba_491	TUR/257/2008		90.2	0	O	ME-SA	PanAsia-2	TER-08
viba_650	IRN/8/2005	ovine	90.0	0	O	ME-SA	PanAsia-2	
viba_666	IRN/18/2010	cattle	89.9	0	O	ME-SA	PanAsia-2	BAL-09
viba_354	PAK/16/2010	cattle	89.7	0	O	ME-SA	PanAsia-2	PUN-10
viba_505	TUR/264/2009		89.6	0	O	ME-SA	PanAsia-2	SAN-09
viba_27877	SRL/2/97	bovine	89.4	0	O	ME-SA	Srl-97	
viba_285	UKG/35/2001	porcine	89.4	0	O	ME-SA	PanAsia	
viba_860	IRN/6/2015	cattle	88.9	0	O	ME-SA	PanAsia-2	QOM-15

Virus sample name:	OMN/22Z2049/2020_86
Sender reference:	OMN/22Z2049/2020_86
Location of origin:	Sohar, Al Batinah North
Country of origin:	Oman
Date of collection:	29/01/2020
Host species:	cattle
Serotype:	O
Topotype:	ME-SA
Lineage:	PanAsia-2
Sublineage:	ANT-10
Sequence length:	633
Ambiguities:	0
Material submitted for sequencing:	n/a
Harvest date of material:	n/a
Primers:	n/a
Received for sequencing:	n/a
Created:	09/01/2023
Last updated:	09/01/2023
VIBASys IDs: sample 52224, genome 52225, sequence viba_52226, sequencing info 52227	

### Most Closely Related Sequences

sequence	virus name	Host	% Id.	# Ambig.	serotype	topotype	lineage	sublineage
viba_52242	OMN/22Z1992/2020_11	cattle	100.0	0	O	ME-SA	PanAsia-2	ANT-10
viba_52218	OMN/22Z2046/2020_83	cattle	100.0	0	O	ME-SA	PanAsia-2	ANT-10
viba_52210	OMN/22Z2044/2020_81	cattle	100.0	0	O	ME-SA	PanAsia-2	ANT-10
viba_52214	OMN/22Z2045/2020_82	cattle	100.0	0	O	ME-SA	PanAsia-2	ANT-10
viba_52238	OMN/22Z1991/2020_10	cattle	100.0	0	O	ME-SA	PanAsia-2	ANT-10
viba_52246	OMN/22Z1993/2020_12	cattle	100.0	0	O	ME-SA	PanAsia-2	ANT-10
viba_52234	OMN/22Z1990/2020_9	cattle	100.0	0	O	ME-SA	PanAsia-2	ANT-10
viba_52206	OMN/22Z2043/2020_80	cattle	100.0	0	O	ME-SA	PanAsia-2	ANT-10
viba_52230	OMN/22Z2050/2020_87	cattle	100.0	0	O	ME-SA	PanAsia-2	ANT-10
viba_52222	OMN/22Z2047/2020_84	cattle	99.8	1	O	ME-SA	PanAsia-2	ANT-10

### Most Closely Related Prototype Sequences

see <http://www.wrlfmd.org/fmdv-genome/fmd-prototype-strains>

sequence	virus name	Host	% Id.	# Ambig.	serotype	topotype	lineage	sublineage
viba_719	IRN/88/2009		92.8	0	O	ME-SA	PanAsia-2	ANT-10
viba_766	IRN/31/2009	cattle	90.5	0	O	ME-SA	PanAsia-2	FAR-09
viba_491	TUR/257/2008		90.4	0	O	ME-SA	PanAsia-2	TER-08
viba_650	IRN/8/2005	ovine	90.2	0	O	ME-SA	PanAsia-2	
viba_666	IRN/18/2010	cattle	90.0	0	O	ME-SA	PanAsia-2	BAL-09
viba_354	PAK/16/2010	cattle	89.9	0	O	ME-SA	PanAsia-2	PUN-10
viba_505	TUR/264/2009		89.7	0	O	ME-SA	PanAsia-2	SAN-09
viba_27877	SRL/2/97	bovine	89.6	0	O	ME-SA	Srl-97	
viba_285	UKG/35/2001	porcine	89.6	0	O	ME-SA	PanAsia	
viba_860	IRN/6/2015	cattle	89.1	0	O	ME-SA	PanAsia-2	QOM-15

Virus sample name:	OMN/22Z2050/2020_87
Sender reference:	OMN/22Z2050/2020_87
Location of origin:	Sohar, Al Batinah North
Country of origin:	Oman
Date of collection:	29/01/2020
Host species:	cattle
Serotype:	O
Topotype:	ME-SA
Lineage:	PanAsia-2
Sublineage:	ANT-10
Sequence length:	633
Ambiguities:	0
Material submitted for sequencing:	n/a
Harvest date of material:	n/a
Primers:	n/a
Received for sequencing:	n/a
Created:	09/01/2023
Last updated:	09/01/2023
VIBASys IDs: sample 52228, genome 52229, sequence viba_52230, sequencing info 52231	

### Most Closely Related Sequences

sequence	virus name	Host	% Id.	# Ambig.	serotype	topotype	lineage	sublineage
viba_52242	OMN/22Z1992/2020_11	cattle	100.0	0	O	ME-SA	PanAsia-2	ANT-10
viba_52218	OMN/22Z2046/2020_83	cattle	100.0	0	O	ME-SA	PanAsia-2	ANT-10
viba_52210	OMN/22Z2044/2020_81	cattle	100.0	0	O	ME-SA	PanAsia-2	ANT-10
viba_52214	OMN/22Z2045/2020_82	cattle	100.0	0	O	ME-SA	PanAsia-2	ANT-10
viba_52226	OMN/22Z2049/2020_86	cattle	100.0	0	O	ME-SA	PanAsia-2	ANT-10
viba_52238	OMN/22Z1991/2020_10	cattle	100.0	0	O	ME-SA	PanAsia-2	ANT-10
viba_52246	OMN/22Z1993/2020_12	cattle	100.0	0	O	ME-SA	PanAsia-2	ANT-10
viba_52234	OMN/22Z1990/2020_9	cattle	100.0	0	O	ME-SA	PanAsia-2	ANT-10
viba_52206	OMN/22Z2043/2020_80	cattle	100.0	0	O	ME-SA	PanAsia-2	ANT-10
viba_52222	OMN/22Z2047/2020_84	cattle	99.8	1	O	ME-SA	PanAsia-2	ANT-10

### Most Closely Related Prototype Sequences

see <http://www.wrlfmd.org/fmdv-genome/fmd-prototype-strains>

sequence	virus name	Host	% Id.	# Ambig.	serotype	topotype	lineage	sublineage
viba_719	IRN/88/2009		92.8	0	O	ME-SA	PanAsia-2	ANT-10
viba_766	IRN/31/2009	cattle	90.5	0	O	ME-SA	PanAsia-2	FAR-09
viba_491	TUR/257/2008		90.4	0	O	ME-SA	PanAsia-2	TER-08
viba_650	IRN/8/2005	ovine	90.2	0	O	ME-SA	PanAsia-2	
viba_666	IRN/18/2010	cattle	90.0	0	O	ME-SA	PanAsia-2	BAL-09
viba_354	PAK/16/2010	cattle	89.9	0	O	ME-SA	PanAsia-2	PUN-10
viba_505	TUR/264/2009		89.7	0	O	ME-SA	PanAsia-2	SAN-09
viba_27877	SRL/2/97	bovine	89.6	0	O	ME-SA	Srl-97	
viba_285	UKG/35/2001	porcine	89.6	0	O	ME-SA	PanAsia	
viba_860	IRN/6/2015	cattle	89.1	0	O	ME-SA	PanAsia-2	QOM-15



Virus sample name:	OMN/22Z1990/2020_9
Sender reference:	OMN/22Z1990/2020_9
Location of origin:	Sohar, Al Batinah North
Country of origin:	Oman
Date of collection:	06/02/2020
Host species:	cattle
Serotype:	O
Topotype:	ME-SA
Lineage:	PanAsia-2
Sublineage:	ANT-10
Sequence length:	633
Ambiguities:	0
Material submitted for sequencing:	n/a
Harvest date of material:	n/a
Primers:	n/a
Received for sequencing:	n/a
Created:	09/01/2023
Last updated:	09/01/2023
VIBASys IDs: sample 52232, genome 52233, sequence viba_52234, sequencing info 52235	

### Most Closely Related Sequences

sequence	virus name	Host	% Id.	# Ambig.	serotype	topotype	lineage	sublineage
viba_52242	OMN/22Z1992/2020_11	cattle	100.0	0	O	ME-SA	PanAsia-2	ANT-10
viba_52218	OMN/22Z2046/2020_83	cattle	100.0	0	O	ME-SA	PanAsia-2	ANT-10
viba_52210	OMN/22Z2044/2020_81	cattle	100.0	0	O	ME-SA	PanAsia-2	ANT-10
viba_52214	OMN/22Z2045/2020_82	cattle	100.0	0	O	ME-SA	PanAsia-2	ANT-10
viba_52226	OMN/22Z2049/2020_86	cattle	100.0	0	O	ME-SA	PanAsia-2	ANT-10
viba_52238	OMN/22Z1991/2020_10	cattle	100.0	0	O	ME-SA	PanAsia-2	ANT-10
viba_52246	OMN/22Z1993/2020_12	cattle	100.0	0	O	ME-SA	PanAsia-2	ANT-10
viba_52206	OMN/22Z2043/2020_80	cattle	100.0	0	O	ME-SA	PanAsia-2	ANT-10
viba_52230	OMN/22Z2050/2020_87	cattle	100.0	0	O	ME-SA	PanAsia-2	ANT-10
viba_52222	OMN/22Z2047/2020_84	cattle	99.8	1	O	ME-SA	PanAsia-2	ANT-10

### Most Closely Related Prototype Sequences

see <http://www.wrlfmd.org/fmdv-genome/fmd-prototype-strains>

sequence	virus name	Host	% Id.	# Ambig.	serotype	topotype	lineage	sublineage
viba_719	IRN/88/2009		92.8	0	O	ME-SA	PanAsia-2	ANT-10
viba_766	IRN/31/2009	cattle	90.5	0	O	ME-SA	PanAsia-2	FAR-09
viba_491	TUR/257/2008		90.4	0	O	ME-SA	PanAsia-2	TER-08
viba_650	IRN/8/2005	ovine	90.2	0	O	ME-SA	PanAsia-2	
viba_666	IRN/18/2010	cattle	90.0	0	O	ME-SA	PanAsia-2	BAL-09
viba_354	PAK/16/2010	cattle	89.9	0	O	ME-SA	PanAsia-2	PUN-10
viba_505	TUR/264/2009		89.7	0	O	ME-SA	PanAsia-2	SAN-09
viba_27877	SRL/2/97	bovine	89.6	0	O	ME-SA	Srl-97	
viba_285	UKG/35/2001	porcine	89.6	0	O	ME-SA	PanAsia	
viba_860	IRN/6/2015	cattle	89.1	0	O	ME-SA	PanAsia-2	QOM-15

Virus sample name:	OMN/22Z1991/2020_10
Sender reference:	OMN/22Z1991/2020_10
Location of origin:	Sohar, Al Batinah North
Country of origin:	Oman
Date of collection:	06/02/2020
Host species:	cattle
Serotype:	O
Topotype:	ME-SA
Lineage:	PanAsia-2
Sublineage:	ANT-10
Sequence length:	633
Ambiguities:	0
Material submitted for sequencing:	n/a
Harvest date of material:	n/a
Primers:	n/a
Received for sequencing:	n/a
Created:	09/01/2023
Last updated:	09/01/2023
VIBASys IDs: sample 52236, genome 52237, sequence viba_52238, sequencing info 52239	

### Most Closely Related Sequences

sequence	virus name	Host	% Id.	# Ambig.	serotype	topotype	lineage	sublineage
viba_52242	OMN/22Z1992/2020_11	cattle	100.0	0	O	ME-SA	PanAsia-2	ANT-10
viba_52218	OMN/22Z2046/2020_83	cattle	100.0	0	O	ME-SA	PanAsia-2	ANT-10
viba_52210	OMN/22Z2044/2020_81	cattle	100.0	0	O	ME-SA	PanAsia-2	ANT-10
viba_52214	OMN/22Z2045/2020_82	cattle	100.0	0	O	ME-SA	PanAsia-2	ANT-10
viba_52226	OMN/22Z2049/2020_86	cattle	100.0	0	O	ME-SA	PanAsia-2	ANT-10
viba_52246	OMN/22Z1993/2020_12	cattle	100.0	0	O	ME-SA	PanAsia-2	ANT-10
viba_52234	OMN/22Z1990/2020_9	cattle	100.0	0	O	ME-SA	PanAsia-2	ANT-10
viba_52206	OMN/22Z2043/2020_80	cattle	100.0	0	O	ME-SA	PanAsia-2	ANT-10
viba_52230	OMN/22Z2050/2020_87	cattle	100.0	0	O	ME-SA	PanAsia-2	ANT-10
viba_52222	OMN/22Z2047/2020_84	cattle	99.8	1	O	ME-SA	PanAsia-2	ANT-10

### Most Closely Related Prototype Sequences

see <http://www.wrlfmd.org/fmdv-genome/fmd-prototype-strains>

sequence	virus name	Host	% Id.	# Ambig.	serotype	topotype	lineage	sublineage
viba_719	IRN/88/2009		92.8	0	O	ME-SA	PanAsia-2	ANT-10
viba_766	IRN/31/2009	cattle	90.5	0	O	ME-SA	PanAsia-2	FAR-09
viba_491	TUR/257/2008		90.4	0	O	ME-SA	PanAsia-2	TER-08
viba_650	IRN/8/2005	ovine	90.2	0	O	ME-SA	PanAsia-2	
viba_666	IRN/18/2010	cattle	90.0	0	O	ME-SA	PanAsia-2	BAL-09
viba_354	PAK/16/2010	cattle	89.9	0	O	ME-SA	PanAsia-2	PUN-10
viba_505	TUR/264/2009		89.7	0	O	ME-SA	PanAsia-2	SAN-09
viba_27877	SRL/2/97	bovine	89.6	0	O	ME-SA	Srl-97	
viba_285	UKG/35/2001	porcine	89.6	0	O	ME-SA	PanAsia	
viba_860	IRN/6/2015	cattle	89.1	0	O	ME-SA	PanAsia-2	QOM-15

Virus sample name:	OMN/22Z1992/2020_11
Sender reference:	OMN/22Z1992/2020_11
Location of origin:	Sohar, Al Batinah North
Country of origin:	Oman
Date of collection:	06/02/2020
Host species:	cattle
Serotype:	O
Topotype:	ME-SA
Lineage:	PanAsia-2
Sublineage:	ANT-10
Sequence length:	633
Ambiguities:	0
Material submitted for sequencing:	n/a
Harvest date of material:	n/a
Primers:	n/a
Received for sequencing:	n/a
Created:	09/01/2023
Last updated:	09/01/2023
VIBASys IDs: sample 52240, genome 52241, sequence viba_52242, sequencing info 52243	

### Most Closely Related Sequences

sequence	virus name	Host	% Id.	# Ambig.	serotype	topotype	lineage	sublineage
viba_52218	OMN/22Z2046/2020_83	cattle	100.0	0	O	ME-SA	PanAsia-2	ANT-10
viba_52210	OMN/22Z2044/2020_81	cattle	100.0	0	O	ME-SA	PanAsia-2	ANT-10
viba_52214	OMN/22Z2045/2020_82	cattle	100.0	0	O	ME-SA	PanAsia-2	ANT-10
viba_52226	OMN/22Z2049/2020_86	cattle	100.0	0	O	ME-SA	PanAsia-2	ANT-10
viba_52238	OMN/22Z1991/2020_10	cattle	100.0	0	O	ME-SA	PanAsia-2	ANT-10
viba_52246	OMN/22Z1993/2020_12	cattle	100.0	0	O	ME-SA	PanAsia-2	ANT-10
viba_52234	OMN/22Z1990/2020_9	cattle	100.0	0	O	ME-SA	PanAsia-2	ANT-10
viba_52206	OMN/22Z2043/2020_80	cattle	100.0	0	O	ME-SA	PanAsia-2	ANT-10
viba_52230	OMN/22Z2050/2020_87	cattle	100.0	0	O	ME-SA	PanAsia-2	ANT-10
viba_52222	OMN/22Z2047/2020_84	cattle	99.8	1	O	ME-SA	PanAsia-2	ANT-10

### Most Closely Related Prototype Sequences

see <http://www.wrlfmd.org/fmdv-genome/fmd-prototype-strains>

sequence	virus name	Host	% Id.	# Ambig.	serotype	topotype	lineage	sublineage
viba_719	IRN/88/2009		92.8	0	O	ME-SA	PanAsia-2	ANT-10
viba_766	IRN/31/2009	cattle	90.5	0	O	ME-SA	PanAsia-2	FAR-09
viba_491	TUR/257/2008		90.4	0	O	ME-SA	PanAsia-2	TER-08
viba_650	IRN/8/2005	ovine	90.2	0	O	ME-SA	PanAsia-2	
viba_666	IRN/18/2010	cattle	90.0	0	O	ME-SA	PanAsia-2	BAL-09
viba_354	PAK/16/2010	cattle	89.9	0	O	ME-SA	PanAsia-2	PUN-10
viba_505	TUR/264/2009		89.7	0	O	ME-SA	PanAsia-2	SAN-09
viba_27877	SRL/2/97	bovine	89.6	0	O	ME-SA	Srl-97	
viba_285	UKG/35/2001	porcine	89.6	0	O	ME-SA	PanAsia	
viba_860	IRN/6/2015	cattle	89.1	0	O	ME-SA	PanAsia-2	QOM-15

Virus sample name:	OMN/22Z1993/2020_12
Sender reference:	OMN/22Z1993/2020_12
Location of origin:	Sohar, Al Batinah North
Country of origin:	Oman
Date of collection:	06/02/2020
Host species:	cattle
Serotype:	O
Topotype:	ME-SA
Lineage:	PanAsia-2
Sublineage:	ANT-10
Sequence length:	633
Ambiguities:	0
Material submitted for sequencing:	n/a
Harvest date of material:	n/a
Primers:	n/a
Received for sequencing:	n/a
Created:	09/01/2023
Last updated:	09/01/2023
VIBASys IDs: sample 52244, genome 52245, sequence viba_52246, sequencing info 52247	

### Most Closely Related Sequences

sequence	virus name	Host	% Id.	# Ambig.	serotype	topotype	lineage	sublineage
viba_52242	OMN/22Z1992/2020_11	cattle	100.0	0	O	ME-SA	PanAsia-2	ANT-10
viba_52218	OMN/22Z2046/2020_83	cattle	100.0	0	O	ME-SA	PanAsia-2	ANT-10
viba_52210	OMN/22Z2044/2020_81	cattle	100.0	0	O	ME-SA	PanAsia-2	ANT-10
viba_52214	OMN/22Z2045/2020_82	cattle	100.0	0	O	ME-SA	PanAsia-2	ANT-10
viba_52226	OMN/22Z2049/2020_86	cattle	100.0	0	O	ME-SA	PanAsia-2	ANT-10
viba_52238	OMN/22Z1991/2020_10	cattle	100.0	0	O	ME-SA	PanAsia-2	ANT-10
viba_52234	OMN/22Z1990/2020_9	cattle	100.0	0	O	ME-SA	PanAsia-2	ANT-10
viba_52206	OMN/22Z2043/2020_80	cattle	100.0	0	O	ME-SA	PanAsia-2	ANT-10
viba_52230	OMN/22Z2050/2020_87	cattle	100.0	0	O	ME-SA	PanAsia-2	ANT-10
viba_52222	OMN/22Z2047/2020_84	cattle	99.8	1	O	ME-SA	PanAsia-2	ANT-10

### Most Closely Related Prototype Sequences

see <http://www.wrlfmd.org/fmdv-genome/fmd-prototype-strains>

sequence	virus name	Host	% Id.	# Ambig.	serotype	topotype	lineage	sublineage
viba_719	IRN/88/2009		92.8	0	O	ME-SA	PanAsia-2	ANT-10
viba_766	IRN/31/2009	cattle	90.5	0	O	ME-SA	PanAsia-2	FAR-09
viba_491	TUR/257/2008		90.4	0	O	ME-SA	PanAsia-2	TER-08
viba_650	IRN/8/2005	ovine	90.2	0	O	ME-SA	PanAsia-2	
viba_666	IRN/18/2010	cattle	90.0	0	O	ME-SA	PanAsia-2	BAL-09
viba_354	PAK/16/2010	cattle	89.9	0	O	ME-SA	PanAsia-2	PUN-10
viba_505	TUR/264/2009		89.7	0	O	ME-SA	PanAsia-2	SAN-09
viba_27877	SRL/2/97	bovine	89.6	0	O	ME-SA	Srl-97	
viba_285	UKG/35/2001	porcine	89.6	0	O	ME-SA	PanAsia	
viba_860	IRN/6/2015	cattle	89.1	0	O	ME-SA	PanAsia-2	QOM-15

Virus sample name:	OMN/22Z2023/2020_58
Sender reference:	OMN/22Z2023/2020_58
Location of origin:	Barka, Al Batinah South
Country of origin:	Oman
Date of collection:	13/04/2020
Host species:	cattle
Serotype:	O
Topotype:	ME-SA
Lineage:	PanAsia-2
Sublineage:	ANT-10
Sequence length:	633
Ambiguities:	0
Material submitted for sequencing:	n/a
Harvest date of material:	n/a
Primers:	n/a
Received for sequencing:	n/a
Created:	09/01/2023
Last updated:	09/01/2023
VIBASys IDs: sample 52289, genome 52290, sequence viba_52291, sequencing info 52292	

### Most Closely Related Sequences

sequence	virus name	Host	% Id.	# Ambig.	serotype	topotype	lineage	sublineage
viba_52311	OMN/22Z2116/2020_186	cattle	100.0	0	O	ME-SA	PanAsia-2	ANT-10
viba_52359	OMN/22Z2053/2020_92	cattle	100.0	0	O	ME-SA	PanAsia-2	ANT-10
viba_52295	OMN/22Z2024/2020_59	cattle	100.0	0	O	ME-SA	PanAsia-2	ANT-10
viba_52319	OMN/22Z2118/2020_188	cattle	100.0	0	O	ME-SA	PanAsia-2	ANT-10
viba_52307	OMN/22Z2027/2020_62	cattle	100.0	0	O	ME-SA	PanAsia-2	ANT-10
viba_52315	OMN/22Z2117/2020_187	cattle	100.0	0	O	ME-SA	PanAsia-2	ANT-10
viba_52303	OMN/22Z2026/2020_61	cattle	100.0	0	O	ME-SA	PanAsia-2	ANT-10
viba_52299	OMN/22Z2025/2020_60	cattle	99.8	0	O	ME-SA	PanAsia-2	ANT-10
viba_48434	IRN/22/2020	bovine	99.5	0	O	ME-SA	PanAsia-2	ANT-10
viba_52242	OMN/22Z1992/2020_11	cattle	99.4	0	O	ME-SA	PanAsia-2	ANT-10

### Most Closely Related Prototype Sequences

see <http://www.wrlfmd.org/fmdv-genome/fmd-prototype-strains>

sequence	virus name	Host	% Id.	# Ambig.	serotype	topotype	lineage	sublineage
viba_719	IRN/88/2009		92.1	0	O	ME-SA	PanAsia-2	ANT-10
viba_766	IRN/31/2009	cattle	90.2	0	O	ME-SA	PanAsia-2	FAR-09
viba_491	TUR/257/2008		90.0	0	O	ME-SA	PanAsia-2	TER-08
viba_354	PAK/16/2010	cattle	89.6	0	O	ME-SA	PanAsia-2	PUN-10
viba_650	IRN/8/2005	ovine	89.6	0	O	ME-SA	PanAsia-2	
viba_666	IRN/18/2010	cattle	89.4	0	O	ME-SA	PanAsia-2	BAL-09
viba_505	TUR/264/2009		89.4	0	O	ME-SA	PanAsia-2	SAN-09
viba_285	UKG/35/2001	porcine	89.3	0	O	ME-SA	PanAsia	
viba_27877	SRL/2/97	bovine	88.9	0	O	ME-SA	Srl-97	
viba_860	IRN/6/2015	cattle	88.5	0	O	ME-SA	PanAsia-2	QOM-15

Virus sample name:	OMN/22Z2024/2020_59
Sender reference:	OMN/22Z2024/2020_59
Location of origin:	Barka, Al Batinah South
Country of origin:	Oman
Date of collection:	13/04/2020
Host species:	cattle
Serotype:	O
Topotype:	ME-SA
Lineage:	PanAsia-2
Sublineage:	ANT-10
Sequence length:	633
Ambiguities:	0
Material submitted for sequencing:	n/a
Harvest date of material:	n/a
Primers:	n/a
Received for sequencing:	n/a
Created:	09/01/2023
Last updated:	09/01/2023
VIBASys IDs: sample 52293, genome 52294, sequence viba_52295, sequencing info 52296	

### Most Closely Related Sequences

sequence	virus name	Host	% Id.	# Ambig.	serotype	topotype	lineage	sublineage
viba_52311	OMN/22Z2116/2020_186	cattle	100.0	0	O	ME-SA	PanAsia-2	ANT-10
viba_52359	OMN/22Z2053/2020_92	cattle	100.0	0	O	ME-SA	PanAsia-2	ANT-10
viba_52319	OMN/22Z2118/2020_188	cattle	100.0	0	O	ME-SA	PanAsia-2	ANT-10
viba_52307	OMN/22Z2027/2020_62	cattle	100.0	0	O	ME-SA	PanAsia-2	ANT-10
viba_52291	OMN/22Z2023/2020_58	cattle	100.0	0	O	ME-SA	PanAsia-2	ANT-10
viba_52315	OMN/22Z2117/2020_187	cattle	100.0	0	O	ME-SA	PanAsia-2	ANT-10
viba_52303	OMN/22Z2026/2020_61	cattle	100.0	0	O	ME-SA	PanAsia-2	ANT-10
viba_52299	OMN/22Z2025/2020_60	cattle	99.8	0	O	ME-SA	PanAsia-2	ANT-10
viba_48434	IRN/22/2020	bovine	99.5	0	O	ME-SA	PanAsia-2	ANT-10
viba_52242	OMN/22Z1992/2020_11	cattle	99.4	0	O	ME-SA	PanAsia-2	ANT-10

### Most Closely Related Prototype Sequences

see <http://www.wrlfmd.org/fmdv-genome/fmd-prototype-strains>

sequence	virus name	Host	% Id.	# Ambig.	serotype	topotype	lineage	sublineage
viba_719	IRN/88/2009		92.1	0	O	ME-SA	PanAsia-2	ANT-10
viba_766	IRN/31/2009	cattle	90.2	0	O	ME-SA	PanAsia-2	FAR-09
viba_491	TUR/257/2008		90.0	0	O	ME-SA	PanAsia-2	TER-08
viba_354	PAK/16/2010	cattle	89.6	0	O	ME-SA	PanAsia-2	PUN-10
viba_650	IRN/8/2005	ovine	89.6	0	O	ME-SA	PanAsia-2	
viba_666	IRN/18/2010	cattle	89.4	0	O	ME-SA	PanAsia-2	BAL-09
viba_505	TUR/264/2009		89.4	0	O	ME-SA	PanAsia-2	SAN-09
viba_285	UKG/35/2001	porcine	89.3	0	O	ME-SA	PanAsia	
viba_27877	SRL/2/97	bovine	88.9	0	O	ME-SA	Srl-97	
viba_860	IRN/6/2015	cattle	88.5	0	O	ME-SA	PanAsia-2	QOM-15

Virus sample name:	OMN/22Z2025/2020_60
Sender reference:	OMN/22Z2025/2020_60
Location of origin:	Barka, Al Batinah South
Country of origin:	Oman
Date of collection:	13/04/2020
Host species:	cattle
Serotype:	O
Topotype:	ME-SA
Lineage:	PanAsia-2
Sublineage:	ANT-10
Sequence length:	633
Ambiguities:	0
Material submitted for sequencing:	n/a
Harvest date of material:	n/a
Primers:	n/a
Received for sequencing:	n/a
Created:	09/01/2023
Last updated:	09/01/2023
VIBASys IDs: sample 52297, genome 52298, sequence viba_52299, sequencing info 52300	

### Most Closely Related Sequences

sequence	virus name	Host	% Id.	# Ambig.	serotype	topotype	lineage	sublineage
viba_52311	OMN/22Z2116/2020_186	cattle	99.8	0	O	ME-SA	PanAsia-2	ANT-10
viba_52359	OMN/22Z2053/2020_92	cattle	99.8	0	O	ME-SA	PanAsia-2	ANT-10
viba_52295	OMN/22Z2024/2020_59	cattle	99.8	0	O	ME-SA	PanAsia-2	ANT-10
viba_52319	OMN/22Z2118/2020_188	cattle	99.8	0	O	ME-SA	PanAsia-2	ANT-10
viba_52307	OMN/22Z2027/2020_62	cattle	99.8	0	O	ME-SA	PanAsia-2	ANT-10
viba_52291	OMN/22Z2023/2020_58	cattle	99.8	0	O	ME-SA	PanAsia-2	ANT-10
viba_52315	OMN/22Z2117/2020_187	cattle	99.8	0	O	ME-SA	PanAsia-2	ANT-10
viba_52303	OMN/22Z2026/2020_61	cattle	99.8	0	O	ME-SA	PanAsia-2	ANT-10
viba_48434	IRN/22/2020	bovine	99.4	0	O	ME-SA	PanAsia-2	ANT-10
viba_52242	OMN/22Z1992/2020_11	cattle	99.2	0	O	ME-SA	PanAsia-2	ANT-10

### Most Closely Related Prototype Sequences

see <http://www.wrlfmd.org/fmdv-genome/fmd-prototype-strains>

sequence	virus name	Host	% Id.	# Ambig.	serotype	topotype	lineage	sublineage
viba_719	IRN/88/2009		92.0	0	O	ME-SA	PanAsia-2	ANT-10
viba_766	IRN/31/2009	cattle	90.0	0	O	ME-SA	PanAsia-2	FAR-09
viba_491	TUR/257/2008		89.9	0	O	ME-SA	PanAsia-2	TER-08
viba_354	PAK/16/2010	cattle	89.4	0	O	ME-SA	PanAsia-2	PUN-10
viba_650	IRN/8/2005	ovine	89.4	0	O	ME-SA	PanAsia-2	
viba_666	IRN/18/2010	cattle	89.3	0	O	ME-SA	PanAsia-2	BAL-09
viba_505	TUR/264/2009		89.3	0	O	ME-SA	PanAsia-2	SAN-09
viba_285	UKG/35/2001	porcine	89.1	0	O	ME-SA	PanAsia	
viba_27877	SRL/2/97	bovine	88.8	0	O	ME-SA	Srl-97	
viba_860	IRN/6/2015	cattle	88.3	0	O	ME-SA	PanAsia-2	QOM-15

Virus sample name:	OMN/22Z2026/2020_61
Sender reference:	OMN/22Z2026/2020_61
Location of origin:	Barka, Al Batinah South
Country of origin:	Oman
Date of collection:	13/04/2020
Host species:	cattle
Serotype:	O
Topotype:	ME-SA
Lineage:	PanAsia-2
Sublineage:	ANT-10
Sequence length:	633
Ambiguities:	0
Material submitted for sequencing:	n/a
Harvest date of material:	n/a
Primers:	n/a
Received for sequencing:	n/a
Created:	09/01/2023
Last updated:	09/01/2023
VIBASys IDs: sample 52301, genome 52302, sequence viba_52303, sequencing info 52304	

### Most Closely Related Sequences

sequence	virus name	Host	% Id.	# Ambig.	serotype	topotype	lineage	sublineage
viba_52311	OMN/22Z2116/2020_186	cattle	100.0	0	O	ME-SA	PanAsia-2	ANT-10
viba_52359	OMN/22Z2053/2020_92	cattle	100.0	0	O	ME-SA	PanAsia-2	ANT-10
viba_52295	OMN/22Z2024/2020_59	cattle	100.0	0	O	ME-SA	PanAsia-2	ANT-10
viba_52319	OMN/22Z2118/2020_188	cattle	100.0	0	O	ME-SA	PanAsia-2	ANT-10
viba_52307	OMN/22Z2027/2020_62	cattle	100.0	0	O	ME-SA	PanAsia-2	ANT-10
viba_52291	OMN/22Z2023/2020_58	cattle	100.0	0	O	ME-SA	PanAsia-2	ANT-10
viba_52315	OMN/22Z2117/2020_187	cattle	100.0	0	O	ME-SA	PanAsia-2	ANT-10
viba_52299	OMN/22Z2025/2020_60	cattle	99.8	0	O	ME-SA	PanAsia-2	ANT-10
viba_48434	IRN/22/2020	bovine	99.5	0	O	ME-SA	PanAsia-2	ANT-10
viba_52242	OMN/22Z1992/2020_11	cattle	99.4	0	O	ME-SA	PanAsia-2	ANT-10

### Most Closely Related Prototype Sequences

see <http://www.wrlfmd.org/fmdv-genome/fmd-prototype-strains>

sequence	virus name	Host	% Id.	# Ambig.	serotype	topotype	lineage	sublineage
viba_719	IRN/88/2009		92.1	0	O	ME-SA	PanAsia-2	ANT-10
viba_766	IRN/31/2009	cattle	90.2	0	O	ME-SA	PanAsia-2	FAR-09
viba_491	TUR/257/2008		90.0	0	O	ME-SA	PanAsia-2	TER-08
viba_354	PAK/16/2010	cattle	89.6	0	O	ME-SA	PanAsia-2	PUN-10
viba_650	IRN/8/2005	ovine	89.6	0	O	ME-SA	PanAsia-2	
viba_666	IRN/18/2010	cattle	89.4	0	O	ME-SA	PanAsia-2	BAL-09
viba_505	TUR/264/2009		89.4	0	O	ME-SA	PanAsia-2	SAN-09
viba_285	UKG/35/2001	porcine	89.3	0	O	ME-SA	PanAsia	
viba_27877	SRL/2/97	bovine	88.9	0	O	ME-SA	Srl-97	
viba_860	IRN/6/2015	cattle	88.5	0	O	ME-SA	PanAsia-2	QOM-15



Virus sample name:	OMN/22Z2027/2020_62
Sender reference:	OMN/22Z2027/2020_62
Location of origin:	Barka, Al Batinah South
Country of origin:	Oman
Date of collection:	13/04/2020
Host species:	cattle
Serotype:	O
Topotype:	ME-SA
Lineage:	PanAsia-2
Sublineage:	ANT-10
Sequence length:	633
Ambiguities:	0
Material submitted for sequencing:	n/a
Harvest date of material:	n/a
Primers:	n/a
Received for sequencing:	n/a
Created:	09/01/2023
Last updated:	09/01/2023
VIBASys IDs: sample 52305, genome 52306, sequence viba_52307, sequencing info 52308	

### Most Closely Related Sequences

sequence	virus name	Host	% Id.	# Ambig.	serotype	topotype	lineage	sublineage
viba_52311	OMN/22Z2116/2020_186	cattle	100.0	0	O	ME-SA	PanAsia-2	ANT-10
viba_52359	OMN/22Z2053/2020_92	cattle	100.0	0	O	ME-SA	PanAsia-2	ANT-10
viba_52295	OMN/22Z2024/2020_59	cattle	100.0	0	O	ME-SA	PanAsia-2	ANT-10
viba_52319	OMN/22Z2118/2020_188	cattle	100.0	0	O	ME-SA	PanAsia-2	ANT-10
viba_52291	OMN/22Z2023/2020_58	cattle	100.0	0	O	ME-SA	PanAsia-2	ANT-10
viba_52315	OMN/22Z2117/2020_187	cattle	100.0	0	O	ME-SA	PanAsia-2	ANT-10
viba_52303	OMN/22Z2026/2020_61	cattle	100.0	0	O	ME-SA	PanAsia-2	ANT-10
viba_52299	OMN/22Z2025/2020_60	cattle	99.8	0	O	ME-SA	PanAsia-2	ANT-10
viba_48434	IRN/22/2020	bovine	99.5	0	O	ME-SA	PanAsia-2	ANT-10
viba_52242	OMN/22Z1992/2020_11	cattle	99.4	0	O	ME-SA	PanAsia-2	ANT-10

### Most Closely Related Prototype Sequences

see <http://www.wrlfmd.org/fmdv-genome/fmd-prototype-strains>

sequence	virus name	Host	% Id.	# Ambig.	serotype	topotype	lineage	sublineage
viba_719	IRN/88/2009		92.1	0	O	ME-SA	PanAsia-2	ANT-10
viba_766	IRN/31/2009	cattle	90.2	0	O	ME-SA	PanAsia-2	FAR-09
viba_491	TUR/257/2008		90.0	0	O	ME-SA	PanAsia-2	TER-08
viba_354	PAK/16/2010	cattle	89.6	0	O	ME-SA	PanAsia-2	PUN-10
viba_650	IRN/8/2005	ovine	89.6	0	O	ME-SA	PanAsia-2	
viba_666	IRN/18/2010	cattle	89.4	0	O	ME-SA	PanAsia-2	BAL-09
viba_505	TUR/264/2009		89.4	0	O	ME-SA	PanAsia-2	SAN-09
viba_285	UKG/35/2001	porcine	89.3	0	O	ME-SA	PanAsia	
viba_27877	SRL/2/97	bovine	88.9	0	O	ME-SA	Srl-97	
viba_860	IRN/6/2015	cattle	88.5	0	O	ME-SA	PanAsia-2	QOM-15

Virus sample name:	OMN/22Z2116/2020_186
Sender reference:	OMN/22Z2116/2020_186
Location of origin:	Barka, Al Batinah South
Country of origin:	Oman
Date of collection:	13/04/2020
Host species:	cattle
Serotype:	O
Topotype:	ME-SA
Lineage:	PanAsia-2
Sublineage:	ANT-10
Sequence length:	633
Ambiguities:	0
Material submitted for sequencing:	n/a
Harvest date of material:	n/a
Primers:	n/a
Received for sequencing:	n/a
Created:	09/01/2023
Last updated:	09/01/2023
VIBASys IDs: sample 52309, genome 52310, sequence viba_52311, sequencing info 52312	

### Most Closely Related Sequences

sequence	virus name	Host	% Id.	# Ambig.	serotype	topotype	lineage	sublineage
viba_52359	OMN/22Z2053/2020_92	cattle	100.0	0	O	ME-SA	PanAsia-2	ANT-10
viba_52295	OMN/22Z2024/2020_59	cattle	100.0	0	O	ME-SA	PanAsia-2	ANT-10
viba_52319	OMN/22Z2118/2020_188	cattle	100.0	0	O	ME-SA	PanAsia-2	ANT-10
viba_52307	OMN/22Z2027/2020_62	cattle	100.0	0	O	ME-SA	PanAsia-2	ANT-10
viba_52291	OMN/22Z2023/2020_58	cattle	100.0	0	O	ME-SA	PanAsia-2	ANT-10
viba_52315	OMN/22Z2117/2020_187	cattle	100.0	0	O	ME-SA	PanAsia-2	ANT-10
viba_52303	OMN/22Z2026/2020_61	cattle	100.0	0	O	ME-SA	PanAsia-2	ANT-10
viba_52299	OMN/22Z2025/2020_60	cattle	99.8	0	O	ME-SA	PanAsia-2	ANT-10
viba_48434	IRN/22/2020	bovine	99.5	0	O	ME-SA	PanAsia-2	ANT-10
viba_52242	OMN/22Z1992/2020_11	cattle	99.4	0	O	ME-SA	PanAsia-2	ANT-10

### Most Closely Related Prototype Sequences

see <http://www.wrlfmd.org/fmdv-genome/fmd-prototype-strains>

sequence	virus name	Host	% Id.	# Ambig.	serotype	topotype	lineage	sublineage
viba_719	IRN/88/2009		92.1	0	O	ME-SA	PanAsia-2	ANT-10
viba_766	IRN/31/2009	cattle	90.2	0	O	ME-SA	PanAsia-2	FAR-09
viba_491	TUR/257/2008		90.0	0	O	ME-SA	PanAsia-2	TER-08
viba_354	PAK/16/2010	cattle	89.6	0	O	ME-SA	PanAsia-2	PUN-10
viba_650	IRN/8/2005	ovine	89.6	0	O	ME-SA	PanAsia-2	
viba_666	IRN/18/2010	cattle	89.4	0	O	ME-SA	PanAsia-2	BAL-09
viba_505	TUR/264/2009		89.4	0	O	ME-SA	PanAsia-2	SAN-09
viba_285	UKG/35/2001	porcine	89.3	0	O	ME-SA	PanAsia	
viba_27877	SRL/2/97	bovine	88.9	0	O	ME-SA	Srl-97	
viba_860	IRN/6/2015	cattle	88.5	0	O	ME-SA	PanAsia-2	QOM-15

Virus sample name:	OMN/22Z2117/2020_187
Sender reference:	OMN/22Z2117/2020_187
Location of origin:	Barka, Al Batinah South
Country of origin:	Oman
Date of collection:	13/04/2020
Host species:	cattle
Serotype:	O
Topotype:	ME-SA
Lineage:	PanAsia-2
Sublineage:	ANT-10
Sequence length:	633
Ambiguities:	0
Material submitted for sequencing:	n/a
Harvest date of material:	n/a
Primers:	n/a
Received for sequencing:	n/a
Created:	09/01/2023
Last updated:	09/01/2023
VIBASys IDs: sample 52313, genome 52314, sequence viba_52315, sequencing info 52316	

### Most Closely Related Sequences

sequence	virus name	Host	% Id.	# Ambig.	serotype	topotype	lineage	sublineage
viba_52311	OMN/22Z2116/2020_186	cattle	100.0	0	O	ME-SA	PanAsia-2	ANT-10
viba_52359	OMN/22Z2053/2020_92	cattle	100.0	0	O	ME-SA	PanAsia-2	ANT-10
viba_52295	OMN/22Z2024/2020_59	cattle	100.0	0	O	ME-SA	PanAsia-2	ANT-10
viba_52319	OMN/22Z2118/2020_188	cattle	100.0	0	O	ME-SA	PanAsia-2	ANT-10
viba_52307	OMN/22Z2027/2020_62	cattle	100.0	0	O	ME-SA	PanAsia-2	ANT-10
viba_52291	OMN/22Z2023/2020_58	cattle	100.0	0	O	ME-SA	PanAsia-2	ANT-10
viba_52303	OMN/22Z2026/2020_61	cattle	100.0	0	O	ME-SA	PanAsia-2	ANT-10
viba_52299	OMN/22Z2025/2020_60	cattle	99.8	0	O	ME-SA	PanAsia-2	ANT-10
viba_48434	IRN/22/2020	bovine	99.5	0	O	ME-SA	PanAsia-2	ANT-10
viba_52242	OMN/22Z1992/2020_11	cattle	99.4	0	O	ME-SA	PanAsia-2	ANT-10

### Most Closely Related Prototype Sequences

see <http://www.wrlfmd.org/fmdv-genome/fmd-prototype-strains>

sequence	virus name	Host	% Id.	# Ambig.	serotype	topotype	lineage	sublineage
viba_719	IRN/88/2009		92.1	0	O	ME-SA	PanAsia-2	ANT-10
viba_766	IRN/31/2009	cattle	90.2	0	O	ME-SA	PanAsia-2	FAR-09
viba_491	TUR/257/2008		90.0	0	O	ME-SA	PanAsia-2	TER-08
viba_354	PAK/16/2010	cattle	89.6	0	O	ME-SA	PanAsia-2	PUN-10
viba_650	IRN/8/2005	ovine	89.6	0	O	ME-SA	PanAsia-2	
viba_666	IRN/18/2010	cattle	89.4	0	O	ME-SA	PanAsia-2	BAL-09
viba_505	TUR/264/2009		89.4	0	O	ME-SA	PanAsia-2	SAN-09
viba_285	UKG/35/2001	porcine	89.3	0	O	ME-SA	PanAsia	
viba_27877	SRL/2/97	bovine	88.9	0	O	ME-SA	Srl-97	
viba_860	IRN/6/2015	cattle	88.5	0	O	ME-SA	PanAsia-2	QOM-15

Virus sample name:	OMN/22Z2118/2020_188
Sender reference:	OMN/22Z2118/2020_188
Location of origin:	Barka, Al Batinah South
Country of origin:	Oman
Date of collection:	13/04/2020
Host species:	cattle
Serotype:	O
Topotype:	ME-SA
Lineage:	PanAsia-2
Sublineage:	ANT-10
Sequence length:	633
Ambiguities:	0
Material submitted for sequencing:	n/a
Harvest date of material:	n/a
Primers:	n/a
Received for sequencing:	n/a
Created:	09/01/2023
Last updated:	09/01/2023
VIBASys IDs: sample 52317, genome 52318, sequence viba_52319, sequencing info 52320	

### Most Closely Related Sequences

sequence	virus name	Host	% Id.	# Ambig.	serotype	topotype	lineage	sublineage
viba_52311	OMN/22Z2116/2020_186	cattle	100.0	0	O	ME-SA	PanAsia-2	ANT-10
viba_52359	OMN/22Z2053/2020_92	cattle	100.0	0	O	ME-SA	PanAsia-2	ANT-10
viba_52295	OMN/22Z2024/2020_59	cattle	100.0	0	O	ME-SA	PanAsia-2	ANT-10
viba_52307	OMN/22Z2027/2020_62	cattle	100.0	0	O	ME-SA	PanAsia-2	ANT-10
viba_52291	OMN/22Z2023/2020_58	cattle	100.0	0	O	ME-SA	PanAsia-2	ANT-10
viba_52315	OMN/22Z2117/2020_187	cattle	100.0	0	O	ME-SA	PanAsia-2	ANT-10
viba_52303	OMN/22Z2026/2020_61	cattle	100.0	0	O	ME-SA	PanAsia-2	ANT-10
viba_52299	OMN/22Z2025/2020_60	cattle	99.8	0	O	ME-SA	PanAsia-2	ANT-10
viba_48434	IRN/22/2020	bovine	99.5	0	O	ME-SA	PanAsia-2	ANT-10
viba_52242	OMN/22Z1992/2020_11	cattle	99.4	0	O	ME-SA	PanAsia-2	ANT-10

### Most Closely Related Prototype Sequences

see <http://www.wrlfmd.org/fmdv-genome/fmd-prototype-strains>

sequence	virus name	Host	% Id.	# Ambig.	serotype	topotype	lineage	sublineage
viba_719	IRN/88/2009		92.1	0	O	ME-SA	PanAsia-2	ANT-10
viba_766	IRN/31/2009	cattle	90.2	0	O	ME-SA	PanAsia-2	FAR-09
viba_491	TUR/257/2008		90.0	0	O	ME-SA	PanAsia-2	TER-08
viba_354	PAK/16/2010	cattle	89.6	0	O	ME-SA	PanAsia-2	PUN-10
viba_650	IRN/8/2005	ovine	89.6	0	O	ME-SA	PanAsia-2	
viba_666	IRN/18/2010	cattle	89.4	0	O	ME-SA	PanAsia-2	BAL-09
viba_505	TUR/264/2009		89.4	0	O	ME-SA	PanAsia-2	SAN-09
viba_285	UKG/35/2001	porcine	89.3	0	O	ME-SA	PanAsia	
viba_27877	SRL/2/97	bovine	88.9	0	O	ME-SA	Srl-97	
viba_860	IRN/6/2015	cattle	88.5	0	O	ME-SA	PanAsia-2	QOM-15

Virus sample name:	OMN/22Z2053/2020_92
Sender reference:	OMN/22Z2053/2020_92
Location of origin:	Izki, Ad Dakhiliyah
Country of origin:	Oman
Date of collection:	14/12/2020
Host species:	cattle
Serotype:	O
Topotype:	ME-SA
Lineage:	PanAsia-2
Sublineage:	ANT-10
Sequence length:	633
Ambiguities:	0
Material submitted for sequencing:	n/a
Harvest date of material:	n/a
Primers:	n/a
Received for sequencing:	n/a
Created:	09/01/2023
Last updated:	09/01/2023
VIBASys IDs: sample 52357, genome 52358, sequence viba_52359, sequencing info 52360	

### Most Closely Related Sequences

sequence	virus name	Host	% Id.	# Ambig.	serotype	topotype	lineage	sublineage
viba_52311	OMN/22Z2116/2020_186	cattle	100.0	0	O	ME-SA	PanAsia-2	ANT-10
viba_52295	OMN/22Z2024/2020_59	cattle	100.0	0	O	ME-SA	PanAsia-2	ANT-10
viba_52319	OMN/22Z2118/2020_188	cattle	100.0	0	O	ME-SA	PanAsia-2	ANT-10
viba_52307	OMN/22Z2027/2020_62	cattle	100.0	0	O	ME-SA	PanAsia-2	ANT-10
viba_52291	OMN/22Z2023/2020_58	cattle	100.0	0	O	ME-SA	PanAsia-2	ANT-10
viba_52315	OMN/22Z2117/2020_187	cattle	100.0	0	O	ME-SA	PanAsia-2	ANT-10
viba_52303	OMN/22Z2026/2020_61	cattle	100.0	0	O	ME-SA	PanAsia-2	ANT-10
viba_52299	OMN/22Z2025/2020_60	cattle	99.8	0	O	ME-SA	PanAsia-2	ANT-10
viba_48434	IRN/22/2020	bovine	99.5	0	O	ME-SA	PanAsia-2	ANT-10
viba_52242	OMN/22Z1992/2020_11	cattle	99.4	0	O	ME-SA	PanAsia-2	ANT-10

### Most Closely Related Prototype Sequences

see <http://www.wrlfmd.org/fmdv-genome/fmd-prototype-strains>

sequence	virus name	Host	% Id.	# Ambig.	serotype	topotype	lineage	sublineage
viba_719	IRN/88/2009		92.1	0	O	ME-SA	PanAsia-2	ANT-10
viba_766	IRN/31/2009	cattle	90.2	0	O	ME-SA	PanAsia-2	FAR-09
viba_491	TUR/257/2008		90.0	0	O	ME-SA	PanAsia-2	TER-08
viba_354	PAK/16/2010	cattle	89.6	0	O	ME-SA	PanAsia-2	PUN-10
viba_650	IRN/8/2005	ovine	89.6	0	O	ME-SA	PanAsia-2	
viba_666	IRN/18/2010	cattle	89.4	0	O	ME-SA	PanAsia-2	BAL-09
viba_505	TUR/264/2009		89.4	0	O	ME-SA	PanAsia-2	SAN-09
viba_285	UKG/35/2001	porcine	89.3	0	O	ME-SA	PanAsia	
viba_27877	SRL/2/97	bovine	88.9	0	O	ME-SA	Srl-97	
viba_860	IRN/6/2015	cattle	88.5	0	O	ME-SA	PanAsia-2	QOM-15

Virus sample name:	OMN/22Z2097/2021_151
Sender reference:	OMN/22Z2097/2021_151
Location of origin:	Barka, Al Batinah South
Country of origin:	Oman
Date of collection:	26/12/2021
Host species:	cattle
Serotype:	O
Topotype:	ME-SA
Lineage:	PanAsia-2
Sublineage:	ANT-10
Sequence length:	633
Ambiguities:	0
Material submitted for sequencing:	n/a
Harvest date of material:	n/a
Primers:	n/a
Received for sequencing:	n/a
Created:	09/01/2023
Last updated:	09/01/2023
VIBASys IDs: sample 52365, genome 52366, sequence viba_52367, sequencing info 52368	

### Most Closely Related Sequences

sequence	virus name	Host	% Id.	# Ambig.	serotype	topotype	lineage	sublineage
viba_50317	PAK/3/2021	cattle	98.3	0	O	ME-SA	PanAsia-2	ANT-10
viba_50954	UAE/2/2021	Arabian oryx	98.3	0	O	ME-SA	PanAsia-2	ANT-10
viba_50325	PAK/6/2021	cattle	98.3	0	O	ME-SA	PanAsia-2	ANT-10
viba_50341	PAK/12/2021	water buffalo	98.3	0	O	ME-SA	PanAsia-2	ANT-10
viba_50950	UAE/1/2021	Arabian oryx	98.3	0	O	ME-SA	PanAsia-2	ANT-10
viba_50313	PAK/1/2021	cattle	98.1	0	O	ME-SA	PanAsia-2	ANT-10
viba_52157	ICFMD/IND/216/2021		98.1	0	O	ME-SA	PanAsia-2	ANT-10
viba_50357	PAK/16/2021	cattle	98.1	0	O	ME-SA	PanAsia-2	ANT-10
viba_52153	ICFMD/IND/215/2021		98.1	0	O	ME-SA	PanAsia-2	ANT-10
viba_50385	PAK/40/2021	cattle	98.1	0	O	ME-SA	PanAsia-2	ANT-10

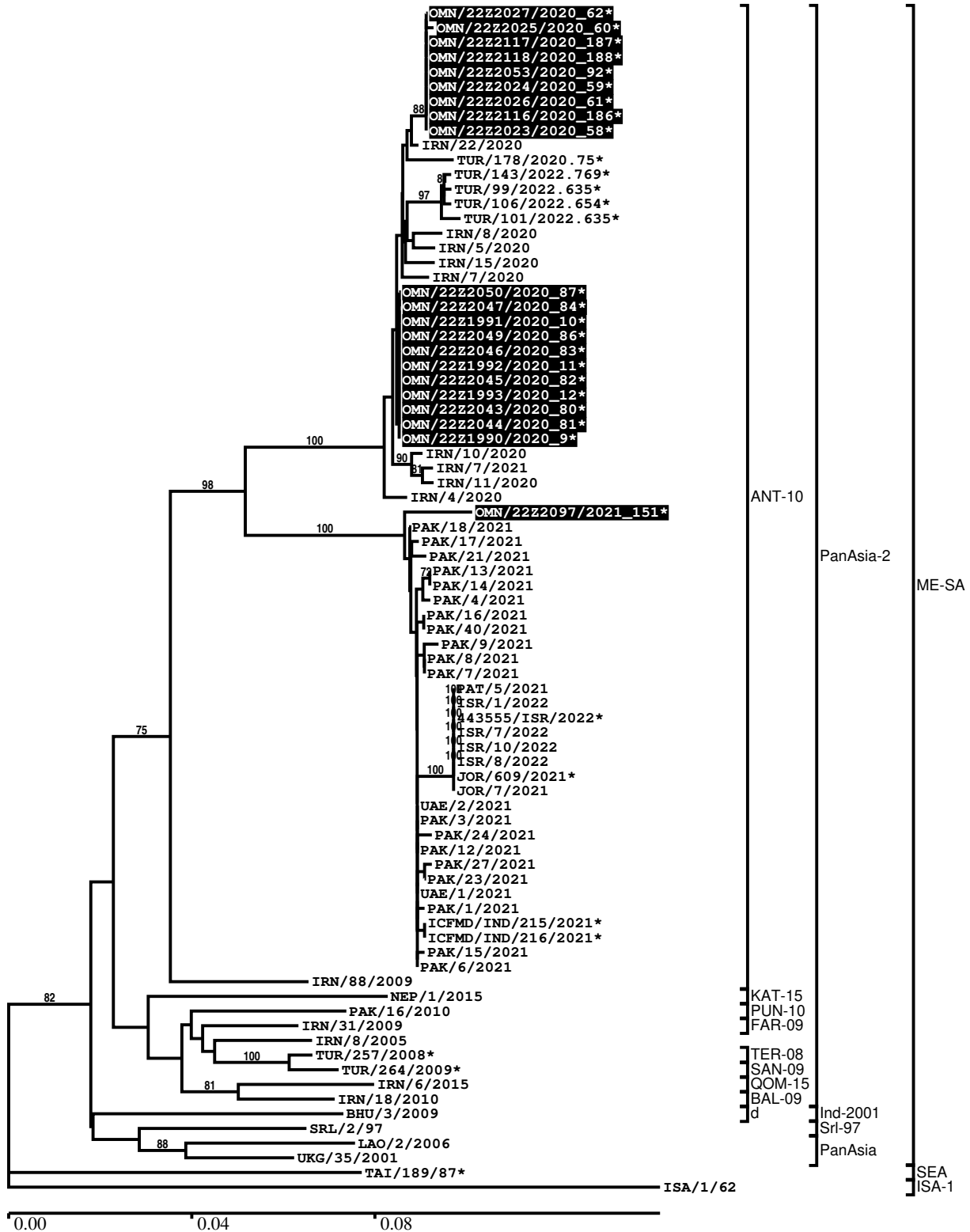
### Most Closely Related Prototype Sequences

see <http://www.wrlfmd.org/fmdv-genome/fmd-prototype-strains>

sequence	virus name	Host	% Id.	# Ambig.	serotype	topotype	lineage	sublineage
viba_719	IRN/88/2009		90.8	0	O	ME-SA	PanAsia-2	ANT-10
viba_650	IRN/8/2005	ovine	88.8	0	O	ME-SA	PanAsia-2	
viba_766	IRN/31/2009	cattle	88.8	0	O	ME-SA	PanAsia-2	FAR-09
viba_27877	SRL/2/97	bovine	88.5	0	O	ME-SA	Srl-97	
viba_285	UKG/35/2001	porcine	88.5	0	O	ME-SA	PanAsia	
viba_491	TUR/257/2008		88.3	0	O	ME-SA	PanAsia-2	TER-08
viba_293	BHU/3/2009	cattle	88.3	0	O	ME-SA	Ind-2001	d
viba_505	TUR/264/2009		88.3	0	O	ME-SA	PanAsia-2	SAN-09
viba_850	NEP/1/2015	cattle	88.2	1	O	ME-SA	PanAsia-2	KAT-15
viba_9021	LAO/2/2006	cattle	88.2	0	O	ME-SA	PanAsia	

Report on FMDV O in Oman in 2020, 2021

Batch: WRLMEG/2023/00001C



\*, not a WRLFMD Reference Number

## Analysis Parameters

VP1 subsequence extractor:	vp1_O
Query sequence set:	WRLMEG/2023/00001C-Oman-O (21 sequences)
Sequence database set:	allseqs_O (5853 sequences)
Prototype sequence set:	!prototypes_O (58 sequences)
Number of related sequences reported:	10
Minimal VP1 subsequence match length	600
Sequence alignment method:	muscle (default parameters)
Sequence alignment length:	636
Phylogeny reconstruction method:	fdnadist, fneighbor
Number of bootstrap samples:	1000
Random seed for bootstrapping:	1
Displaying bootstrap values above:	70.0%
Number of sequences in tree capped at:	100
Number of prototype sequences in tree:	13
VIBASys version:	reflabs-1.1.2

## Sequences in the Phylogenetic Tree

All sequences in the tree are in taxonomic group FMDV/O

label	accession	host(s)	lab	country	taxonomic information
OMN/22Z2027/2020_62*	n/a	cattle	ANSES	Oman	ME-SA/PanAsia-2/ANT-10
OMN/22Z2025/2020_60*	n/a	cattle	ANSES	Oman	ME-SA/PanAsia-2/ANT-10
OMN/22Z2117/2020_187*	n/a	cattle	ANSES	Oman	ME-SA/PanAsia-2/ANT-10
OMN/22Z2118/2020_188*	n/a	cattle	ANSES	Oman	ME-SA/PanAsia-2/ANT-10
OMN/22Z2053/2020_92*	n/a	cattle	ANSES	Oman	ME-SA/PanAsia-2/ANT-10
OMN/22Z2024/2020_59*	n/a	cattle	ANSES	Oman	ME-SA/PanAsia-2/ANT-10
OMN/22Z2026/2020_61*	n/a	cattle	ANSES	Oman	ME-SA/PanAsia-2/ANT-10
OMN/22Z2116/2020_186*	n/a	cattle	ANSES	Oman	ME-SA/PanAsia-2/ANT-10
OMN/22Z2023/2020_58*	n/a	cattle	ANSES	Oman	ME-SA/PanAsia-2/ANT-10
IRN/22/2020	n/a	bovine	WRLFMD	Iran	ME-SA/PanAsia-2/ANT-10
TUR/178/2020.75*	n/a	cattle	FMDI	Turkey	ME-SA/PanAsia-2/ANT-10
TUR/143/2022.769*	n/a	sheep	FMDI	Turkey	ME-SA/PanAsia-2/ANT-10
TUR/99/2022.635*	n/a	cattle	FMDI	Turkey	ME-SA/PanAsia-2/ANT-10
TUR/106/2022.654*	n/a	sheep	FMDI	Turkey	ME-SA/PanAsia-2/ANT-10
TUR/101/2022.635*	n/a	sheep	FMDI	Turkey	ME-SA/PanAsia-2/ANT-10
IRN/8/2020	n/a	bovine	WRLFMD	Iran	ME-SA/PanAsia-2/ANT-10
IRN/5/2020	n/a	bovine	WRLFMD	Iran	ME-SA/PanAsia-2/ANT-10
IRN/15/2020	n/a	sheep	WRLFMD	Iran	ME-SA/PanAsia-2/ANT-10
IRN/7/2020	n/a	bovine	WRLFMD	Iran	ME-SA/PanAsia-2/ANT-10
OMN/22Z2050/2020_87*	n/a	cattle	ANSES	Oman	ME-SA/PanAsia-2/ANT-10
OMN/22Z2047/2020_84*	n/a	cattle	ANSES	Oman	ME-SA/PanAsia-2/ANT-10
OMN/22Z1991/2020_10*	n/a	cattle	ANSES	Oman	ME-SA/PanAsia-2/ANT-10
OMN/22Z2049/2020_86*	n/a	cattle	ANSES	Oman	ME-SA/PanAsia-2/ANT-10
OMN/22Z2046/2020_83*	n/a	cattle	ANSES	Oman	ME-SA/PanAsia-2/ANT-10
OMN/22Z1992/2020_11*	n/a	cattle	ANSES	Oman	ME-SA/PanAsia-2/ANT-10
OMN/22Z2045/2020_82*	n/a	cattle	ANSES	Oman	ME-SA/PanAsia-2/ANT-10
OMN/22Z1993/2020_12*	n/a	cattle	ANSES	Oman	ME-SA/PanAsia-2/ANT-10
OMN/22Z2043/2020_80*	n/a	cattle	ANSES	Oman	ME-SA/PanAsia-2/ANT-10
OMN/22Z2044/2020_81*	n/a	cattle	ANSES	Oman	ME-SA/PanAsia-2/ANT-10
OMN/22Z1990/2020_9*	n/a	cattle	ANSES	Oman	ME-SA/PanAsia-2/ANT-10
IRN/10/2020	n/a	bovine	WRLFMD	Iran	ME-SA/PanAsia-2/ANT-10
IRN/7/2021	n/a	bovine	WRLFMD	Iran	ME-SA/PanAsia-2/ANT-10
IRN/11/2020	n/a	sheep	WRLFMD	Iran	ME-SA/PanAsia-2/ANT-10
IRN/4/2020	n/a	bovine	WRLFMD	Iran	ME-SA/PanAsia-2/ANT-10
OMN/22Z2097/2021_151*	n/a	cattle	ANSES	Oman	ME-SA/PanAsia-2/ANT-10
PAK/18/2021	n/a	cattle	WRLFMD	Pakistan	ME-SA/PanAsia-2/ANT-10

*continued on next page*



label	accession	host(s)	lab	country	taxonomic information
PAK/17/2021	n/a	cattle	WRLFMD	Pakistan	ME-SA/PanAsia-2/ANT-10
PAK/21/2021	n/a	cattle	WRLFMD	Pakistan	ME-SA/PanAsia-2/ANT-10
PAK/13/2021	n/a	cattle	WRLFMD	Pakistan	ME-SA/PanAsia-2/ANT-10
PAK/14/2021	n/a	cattle	WRLFMD	Pakistan	ME-SA/PanAsia-2/ANT-10
PAK/4/2021	n/a	water buffalo	WRLFMD	Pakistan	ME-SA/PanAsia-2/ANT-10
PAK/16/2021	n/a	cattle	WRLFMD	Pakistan	ME-SA/PanAsia-2/ANT-10
PAK/40/2021	n/a	cattle	WRLFMD	Pakistan	ME-SA/PanAsia-2/ANT-10
PAK/9/2021	n/a	cattle	WRLFMD	Pakistan	ME-SA/PanAsia-2/ANT-10
PAK/8/2021	n/a	cattle	WRLFMD	Pakistan	ME-SA/PanAsia-2/ANT-10
PAK/7/2021	n/a	cattle	WRLFMD	Pakistan	ME-SA/PanAsia-2/ANT-10
PAT/5/2021	n/a	goat	WRLFMD	Palestinian AT	ME-SA/PanAsia-2/ANT-10
ISR/1/2022	n/a	cattle	WRLFMD	Israel	ME-SA/PanAsia-2/ANT-10
443555/ISR/2022*	n/a	sheep	KVI	Israel	ME-SA/PanAsia-2/ANT-10
ISR/7/2022	n/a	cattle	WRLFMD	Israel	ME-SA/PanAsia-2/ANT-10
ISR/10/2022	n/a	cattle	WRLFMD	Israel	ME-SA/PanAsia-2/ANT-10
ISR/8/2022	n/a	cattle	WRLFMD	Israel	ME-SA/PanAsia-2/ANT-10
JOR/609/2021*	n/a	cattle	JUST	Jordan	ME-SA/PanAsia-2/ANT-10
JOR/7/2021	n/a	cattle	WRLFMD	Jordan	ME-SA/PanAsia-2/ANT-10
UAE/2/2021	n/a	Arabian oryx	WRLFMD	United Arab Emirates	ME-SA/PanAsia-2/ANT-10
PAK/3/2021	n/a	cattle	WRLFMD	Pakistan	ME-SA/PanAsia-2/ANT-10
PAK/24/2021	n/a	cattle	WRLFMD	Pakistan	ME-SA/PanAsia-2/ANT-10
PAK/12/2021	n/a	water buffalo	WRLFMD	Pakistan	ME-SA/PanAsia-2/ANT-10
PAK/27/2021	n/a	cattle	WRLFMD	Pakistan	ME-SA/PanAsia-2/ANT-10
PAK/23/2021	n/a	cattle	WRLFMD	Pakistan	ME-SA/PanAsia-2/ANT-10
UAE/1/2021	n/a	Arabian oryx	WRLFMD	United Arab Emirates	ME-SA/PanAsia-2/ANT-10
PAK/1/2021	n/a	cattle	WRLFMD	Pakistan	ME-SA/PanAsia-2/ANT-10
ICFMD/IND/215/2021*	n/a	n/a	DFMD	India	ME-SA/PanAsia-2/ANT-10
ICFMD/IND/216/2021*	n/a	n/a	DFMD	India	ME-SA/PanAsia-2/ANT-10
PAK/15/2021	n/a	cattle	WRLFMD	Pakistan	ME-SA/PanAsia-2/ANT-10
PAK/6/2021	n/a	cattle	WRLFMD	Pakistan	ME-SA/PanAsia-2/ANT-10
IRN/88/2009	KY091282	n/a	WRLFMD	Iran	ME-SA/PanAsia-2/ANT-10
NEP/1/2015	MN276045	cattle	WRLFMD	Nepal	ME-SA/PanAsia-2/KAT-15
PAK/16/2010	KY091285	cattle	WRLFMD	Pakistan	ME-SA/PanAsia-2/PUN-10
IRN/31/2009	KY091284	cattle	WRLFMD	Iran	ME-SA/PanAsia-2/FAR-09
IRN/8/2005	KY091281	ovine	WRLFMD	Iran	ME-SA/PanAsia-2
TUR/257/2008*	n/a	n/a	FMDI-Ankara	Turkey	ME-SA/PanAsia-2/TER-08
TUR/264/2009*	n/a	n/a	FMDI-Ankara	Turkey	ME-SA/PanAsia-2/SAN-09
IRN/6/2015	MN276044	cattle	WRLFMD	Iran	ME-SA/PanAsia-2/QOM-15
IRN/18/2010	KY091283	cattle	WRLFMD	Iran	ME-SA/PanAsia-2/BAL-09
BHU/3/2009	KM921814	cattle	WRLFMD	Bhutan	ME-SA/Ind-2001/d
SRL/2/97	AJ303531	bovine	WRLFMD	Sri Lanka	ME-SA/Srl-97
LAO/2/2006	EU667451	cattle	WRLFMD	Laos	ME-SA/PanAsia
UKG/35/2001	AJ539141	porcine	PIADC	United Kingdom	ME-SA/PanAsia
TAI/189/87*	KY091288	bovine	TRRL	Thailand	SEA
ISA/1/62	AJ303500	n/a	WRLFMD	Indonesia	ISA-1

\*, not a WRLFMD Reference Number

n/a, not available