

FAO World Reference Laboratory for Foot-and-Mouth Disease (WRLFMD)

Genotyping Report

FMDV serotype: O
Country: Indonesia
Year: 2022
Batch: WRLMEG/2022/00030
No. of sequences: 6
Report date: 5th September 2022
Report generated by: [REDACTED]
Report checked by: [REDACTED]

This report is prepared on behalf of [REDACTED]
[REDACTED], and covers VP1 sequences submitted to the
WRLFMD on the 31st August 2022.



Copyright © 2022 The Pirbright Institute, Ash Road, Pirbright, Woking GU24 0NF, United Kingdom.

www: <http://www.wrlfmd.org/>

email: reporting@pirbright.ac.uk

The contents of this report should not be reproduced without permission.

Virus sample name:	ISA/Toraja_Utara/A07220106/2022
Sender reference:	Toraja Utara A07220106 BBVet Maros
Location of origin:	Toraja Utara regency, South Sulawesi
Country of origin:	Indonesia
Date of collection:	2022
Host species:	
Serotype:	O
Topotype:	ME-SA
Lineage:	Ind-2001
Sublineage:	e
Sequence length:	633
Ambiguities:	0
Material submitted for sequencing:	n/a
Harvest date of material:	n/a
Primers:	n/a
Received for sequencing:	n/a
Created:	05/09/2022
Last updated:	05/09/2022
VIBASys IDs: sample 51532, genome 51533, sequence viba_51534, sequencing info 51535	

Most Closely Related Sequences

sequence	virus name	Host	% Id.	# Ambig.	serotype	topotype	lineage	sublineage
viba_51538	ISA/Bantaeng/A07220112/2022		100.0	0	O	ME-SA	Ind-2001	e
viba_51546	ISA/Gowa/A07220121/2022		100.0	0	O	ME-SA	Ind-2001	e
viba_51247	ISA/LTI/A06220466/2022	cattle	99.8	0	O	ME-SA	Ind-2001	e
viba_51542	ISA/Bone/A07220116/2022		99.8	0	O	ME-SA	Ind-2001	e
viba_51231	ISA/Bojolali/A04222562/2022	cattle	99.7	0	O	ME-SA	Ind-2001	e
viba_51263	ISA/Klaten/A04222596/2022	cattle	99.7	0	O	ME-SA	Ind-2001	e
viba_51283	ISA/Semarang/A04222614/2022	cattle	99.5	0	O	ME-SA	Ind-2001	e
viba_51243	ISA/LTE/A06220465/2022	cattle	99.5	0	O	ME-SA	Ind-2001	e
viba_51251	ISA/Mempawah/BBR11/2022	goat	99.2	0	O	ME-SA	Ind-2001	e
viba_51024	ISA/6/2022	cattle	99.2	0	O	ME-SA	Ind-2001	e

Most Closely Related Prototype Sequences

see <http://www.wrlfmd.org/fmdv-genome/fmd-prototype-strains>

sequence	virus name	Host	% Id.	# Ambig.	serotype	topotype	lineage	sublineage
viba_30238	MUR/19/2016	cattle	95.1	0	O	ME-SA	Ind-2001	e
viba_293	BHU/3/2009	cattle	91.8	0	O	ME-SA	Ind-2001	d
viba_541	OMN/7/2001	bovine	91.5	0	O	ME-SA	Ind-2001	b
viba_705	KUW/3/97	bovine	90.7	0	O	ME-SA	Ind-2001	a
viba_397	UAE/4/2008	gazelle	89.4	0	O	ME-SA	Ind-2001	c
viba_650	IRN/8/2005	ovine	88.5	0	O	ME-SA	PanAsia-2	
viba_285	UKG/35/2001	porcine	88.3	0	O	ME-SA	PanAsia	
viba_666	IRN/18/2010	cattle	88.2	0	O	ME-SA	PanAsia-2	BAL-09
viba_359	Manisa/TUR/69		88.0	0	O	ME-SA		
viba_766	IRN/31/2009	cattle	87.7	0	O	ME-SA	PanAsia-2	FAR-09

Virus sample name:	ISA/Bantaeng/A07220112/2022
Sender reference:	Bantaeng A07220112 BBVet Maros
Location of origin:	Bantaeng regency, South Sulawesi
Country of origin:	Indonesia
Date of collection:	2022
Host species:	
Serotype:	O
Topotype:	ME-SA
Lineage:	Ind-2001
Sublineage:	e
Sequence length:	633
Ambiguities:	0
Material submitted for sequencing:	n/a
Harvest date of material:	n/a
Primers:	n/a
Received for sequencing:	n/a
Created:	05/09/2022
Last updated:	05/09/2022
VIBASys IDs: sample 51536, genome 51537, sequence viba_51538, sequencing info 51539	

Most Closely Related Sequences

sequence	virus name	Host	% Id.	# Ambig.	serotype	topotype	lineage	sublineage
viba_51534	ISA/Toraja_Utara/A07220106/2022		100.0	0	O	ME-SA	Ind-2001	e
viba_51546	ISA/Gowa/A07220121/2022		100.0	0	O	ME-SA	Ind-2001	e
viba_51247	ISA/LTI/A06220466/2022	cattle	99.8	0	O	ME-SA	Ind-2001	e
viba_51542	ISA/Bone/A07220116/2022		99.8	0	O	ME-SA	Ind-2001	e
viba_51231	ISA/Bojolali/A04222562/2022	cattle	99.7	0	O	ME-SA	Ind-2001	e
viba_51263	ISA/Klaten/A04222596/2022	cattle	99.7	0	O	ME-SA	Ind-2001	e
viba_51283	ISA/Semarang/A04222614/2022	cattle	99.5	0	O	ME-SA	Ind-2001	e
viba_51243	ISA/LTE/A06220465/2022	cattle	99.5	0	O	ME-SA	Ind-2001	e
viba_51251	ISA/Mempawah/BBR11/2022	goat	99.2	0	O	ME-SA	Ind-2001	e
viba_51024	ISA/6/2022	cattle	99.2	0	O	ME-SA	Ind-2001	e

Most Closely Related Prototype Sequences

see <http://www.wrlfmd.org/fmdv-genome/fmd-prototype-strains>

sequence	virus name	Host	% Id.	# Ambig.	serotype	topotype	lineage	sublineage
viba_30238	MUR/19/2016	cattle	95.1	0	O	ME-SA	Ind-2001	e
viba_293	BHU/3/2009	cattle	91.8	0	O	ME-SA	Ind-2001	d
viba_541	OMN/7/2001	bovine	91.5	0	O	ME-SA	Ind-2001	b
viba_705	KUW/3/97	bovine	90.7	0	O	ME-SA	Ind-2001	a
viba_397	UAE/4/2008	gazelle	89.4	0	O	ME-SA	Ind-2001	c
viba_650	IRN/8/2005	ovine	88.5	0	O	ME-SA	PanAsia-2	
viba_285	UKG/35/2001	porcine	88.3	0	O	ME-SA	PanAsia	
viba_666	IRN/18/2010	cattle	88.2	0	O	ME-SA	PanAsia-2	BAL-09
viba_359	Manisa/TUR/69		88.0	0	O	ME-SA		
viba_766	IRN/31/2009	cattle	87.7	0	O	ME-SA	PanAsia-2	FAR-09

Virus sample name:	ISA/Bone/A07220116/2022
Sender reference:	Bone A07220116 BBVet Maros
Location of origin:	Bone regency, South Sulawesi
Country of origin:	Indonesia
Date of collection:	2022
Host species:	
Serotype:	O
Topotype:	ME-SA
Lineage:	Ind-2001
Sublineage:	e
Sequence length:	633
Ambiguities:	0
Material submitted for sequencing:	n/a
Harvest date of material:	n/a
Primers:	n/a
Received for sequencing:	n/a
Created:	05/09/2022
Last updated:	05/09/2022

VIBASys IDs: sample 51540, genome 51541, sequence viba_51542, sequencing info 51543

Most Closely Related Sequences

sequence	virus name	Host	% Id.	# Ambig.	serotype	topotype	lineage	sublineage
viba_51534	ISA/Toraja_Utara/A07220106/2022		99.8	0	O	ME-SA	Ind-2001	e
viba_51538	ISA/Bantaeng/A07220112/2022		99.8	0	O	ME-SA	Ind-2001	e
viba_51546	ISA/Gowa/A07220121/2022		99.8	0	O	ME-SA	Ind-2001	e
viba_51247	ISA/LTI/A06220466/2022	cattle	99.7	0	O	ME-SA	Ind-2001	e
viba_51231	ISA/Bojolali/A04222562/2022	cattle	99.5	0	O	ME-SA	Ind-2001	e
viba_51263	ISA/Klaten/A04222596/2022	cattle	99.5	0	O	ME-SA	Ind-2001	e
viba_51283	ISA/Semarang/A04222614/2022	cattle	99.4	0	O	ME-SA	Ind-2001	e
viba_51243	ISA/LTE/A06220465/2022	cattle	99.4	0	O	ME-SA	Ind-2001	e
viba_51251	ISA/Mempawah/BBR11/2022	goat	99.1	0	O	ME-SA	Ind-2001	e
viba_51024	ISA/6/2022	cattle	99.1	0	O	ME-SA	Ind-2001	e

Most Closely Related Prototype Sequences

see <http://www.wrlfmd.org/fmdv-genome/fmd-prototype-strains>

sequence	virus name	Host	% Id.	# Ambig.	serotype	topotype	lineage	sublineage
viba_30238	MUR/19/2016	cattle	94.9	0	O	ME-SA	Ind-2001	e
viba_293	BHU/3/2009	cattle	91.6	0	O	ME-SA	Ind-2001	d
viba_541	OMN/7/2001	bovine	91.3	0	O	ME-SA	Ind-2001	b
viba_705	KUW/3/97	bovine	90.9	0	O	ME-SA	Ind-2001	a
viba_397	UAE/4/2008	gazelle	89.3	0	O	ME-SA	Ind-2001	c
viba_650	IRN/8/2005	ovine	88.3	0	O	ME-SA	PanAsia-2	
viba_285	UKG/35/2001	porcine	88.2	0	O	ME-SA	PanAsia	
viba_666	IRN/18/2010	cattle	88.2	0	O	ME-SA	PanAsia-2	BAL-09
viba_359	Manisa/TUR/69		87.8	0	O	ME-SA		
viba_766	IRN/31/2009	cattle	87.7	0	O	ME-SA	PanAsia-2	FAR-09

Virus sample name:	ISA/Gowa/A07220121/2022
Sender reference:	Gowa A07220121 BBVet Maros
Location of origin:	Gowa regency, South Sulawesi
Country of origin:	Indonesia
Date of collection:	2022
Host species:	
Serotype:	O
Topotype:	ME-SA
Lineage:	Ind-2001
Sublineage:	e
Sequence length:	633
Ambiguities:	0
Material submitted for sequencing:	n/a
Harvest date of material:	n/a
Primers:	n/a
Received for sequencing:	n/a
Created:	05/09/2022
Last updated:	05/09/2022
VIBASys IDs: sample 51544, genome 51545, sequence viba_51546, sequencing info 51547	

Most Closely Related Sequences

sequence	virus name	Host	% Id.	# Ambig.	serotype	topotype	lineage	sublineage
viba_51534	ISA/Toraja_Utara/A07220106/2022		100.0	0	O	ME-SA	Ind-2001	e
viba_51538	ISA/Bantaeng/A07220112/2022		100.0	0	O	ME-SA	Ind-2001	e
viba_51247	ISA/LTI/A06220466/2022	cattle	99.8	0	O	ME-SA	Ind-2001	e
viba_51542	ISA/Bone/A07220116/2022		99.8	0	O	ME-SA	Ind-2001	e
viba_51231	ISA/Bojolali/A04222562/2022	cattle	99.7	0	O	ME-SA	Ind-2001	e
viba_51263	ISA/Klaten/A04222596/2022	cattle	99.7	0	O	ME-SA	Ind-2001	e
viba_51283	ISA/Semarang/A04222614/2022	cattle	99.5	0	O	ME-SA	Ind-2001	e
viba_51243	ISA/LTE/A06220465/2022	cattle	99.5	0	O	ME-SA	Ind-2001	e
viba_51251	ISA/Mempawah/BBR11/2022	goat	99.2	0	O	ME-SA	Ind-2001	e
viba_51024	ISA/6/2022	cattle	99.2	0	O	ME-SA	Ind-2001	e

Most Closely Related Prototype Sequences

see <http://www.wrlfmd.org/fmdv-genome/fmd-prototype-strains>

sequence	virus name	Host	% Id.	# Ambig.	serotype	topotype	lineage	sublineage
viba_30238	MUR/19/2016	cattle	95.1	0	O	ME-SA	Ind-2001	e
viba_293	BHU/3/2009	cattle	91.8	0	O	ME-SA	Ind-2001	d
viba_541	OMN/7/2001	bovine	91.5	0	O	ME-SA	Ind-2001	b
viba_705	KUW/3/97	bovine	90.7	0	O	ME-SA	Ind-2001	a
viba_397	UAE/4/2008	gazelle	89.4	0	O	ME-SA	Ind-2001	c
viba_650	IRN/8/2005	ovine	88.5	0	O	ME-SA	PanAsia-2	
viba_285	UKG/35/2001	porcine	88.3	0	O	ME-SA	PanAsia	
viba_666	IRN/18/2010	cattle	88.2	0	O	ME-SA	PanAsia-2	BAL-09
viba_359	Manisa/TUR/69		88.0	0	O	ME-SA		
viba_766	IRN/31/2009	cattle	87.7	0	O	ME-SA	PanAsia-2	FAR-09

Virus sample name:	ISA/Luwu/A07220122/2022
Sender reference:	Luwu A07220122 BBVet Maros
Location of origin:	Luwu regency, South Sulawesi
Country of origin:	Indonesia
Date of collection:	2022
Host species:	
Serotype:	O
Topotype:	ME-SA
Lineage:	Ind-2001
Sublineage:	e
Sequence length:	624
Ambiguities:	0
Material submitted for sequencing:	n/a
Harvest date of material:	n/a
Primers:	n/a
Received for sequencing:	n/a
Created:	05/09/2022
Last updated:	05/09/2022
VIBASys IDs: sample 51548, genome 51549, sequence viba_51550, sequencing info 51551	

Most Closely Related Sequences

sequence	virus name	Host	% Id.	# Ambig.	serotype	topotype	lineage	sublineage
viba_51534	ISA/Toraja_Utara/A07220106/2022		98.6	0	O	ME-SA	Ind-2001	e
viba_51538	ISA/Bantaeng/A07220112/2022		98.6	0	O	ME-SA	Ind-2001	e
viba_51554	ISA/Karanganyar/A04223309/2022		98.6	0	O	ME-SA	Ind-2001	e
viba_51546	ISA/Gowa/A07220121/2022		98.6	0	O	ME-SA	Ind-2001	e
viba_51247	ISA/LTI/A06220466/2022	cattle	98.4	0	O	ME-SA	Ind-2001	e
viba_51542	ISA/Bone/A07220116/2022		98.4	0	O	ME-SA	Ind-2001	e
viba_51231	ISA/Boyolali/A04222562/2022	cattle	98.3	0	O	ME-SA	Ind-2001	e
viba_51263	ISA/Klaten/A04222596/2022	cattle	98.3	0	O	ME-SA	Ind-2001	e
viba_51283	ISA/Semarang/A04222614/2022	cattle	98.1	0	O	ME-SA	Ind-2001	e
viba_51243	ISA/LTE/A06220465/2022	cattle	98.1	0	O	ME-SA	Ind-2001	e

Most Closely Related Prototype Sequences

see <http://www.wrlfmd.org/fmdv-genome/fmd-prototype-strains>

sequence	virus name	Host	% Id.	# Ambig.	serotype	topotype	lineage	sublineage
viba_30238	MUR/19/2016	cattle	93.7	0	O	ME-SA	Ind-2001	e
viba_293	BHU/3/2009	cattle	90.4	0	O	ME-SA	Ind-2001	d
viba_541	OMN/7/2001	bovine	90.1	0	O	ME-SA	Ind-2001	b
viba_705	KUW/3/97	bovine	89.3	0	O	ME-SA	Ind-2001	a
viba_397	UAE/4/2008	gazelle	88.0	0	O	ME-SA	Ind-2001	c
viba_650	IRN/8/2005	ovine	87.1	0	O	ME-SA	PanAsia-2	
viba_285	UKG/35/2001	porcine	86.9	0	O	ME-SA	PanAsia	
viba_666	IRN/18/2010	cattle	86.7	0	O	ME-SA	PanAsia-2	BAL-09
viba_359	Manisa/TUR/69		86.7	0	O	ME-SA		
viba_491	TUR/257/2008		86.3	0	O	ME-SA	PanAsia-2	TER-08

Virus sample name:	ISA/Karanganyar/A04223309/2022
Sender reference:	Karanganyar A04223309 BBVet Wates
Location of origin:	Karanganyar regency, Central Java
Country of origin:	Indonesia
Date of collection:	2022
Host species:	
Serotype:	O
Topotype:	ME-SA
Lineage:	Ind-2001
Sublineage:	e
Sequence length:	620
Ambiguities:	0
Material submitted for sequencing:	n/a
Harvest date of material:	n/a
Primers:	n/a
Received for sequencing:	n/a
Created:	05/09/2022
Last updated:	05/09/2022
VIBASys IDs: sample 51552, genome 51553, sequence viba_51554, sequencing info 51555	

Most Closely Related Sequences

sequence	virus name	Host	% Id.	# Ambig.	serotype	topotype	lineage	sublineage
viba_51550	ISA/Luwu/A07220122/2022		98.6	0	O	ME-SA	Ind-2001	e
viba_51251	ISA/Mempawah/BBR11/2022	goat	97.9	0	O	ME-SA	Ind-2001	e
viba_51024	ISA/6/2022	cattle	97.9	0	O	ME-SA	Ind-2001	e
viba_51215	ISA/Mojokerto/PVT/2022	cattle	97.9	0	O	ME-SA	Ind-2001	e
viba_51239	ISA/PangkalPinang/PVT/2022	cattle	97.9	0	O	ME-SA	Ind-2001	e
viba_51271	ISA/Gresik/PVT-KBMS/2022	cattle	97.9	0	O	ME-SA	Ind-2001	e
viba_51255	ISA/KWB/A0522106/2022	cattle	97.9	0	O	ME-SA	Ind-2001	e
viba_51207	ISA/Lamongan/PVT-VL6/2022	cattle	97.9	0	O	ME-SA	Ind-2001	e
viba_51016	ISA/1/2022	cattle	97.9	0	O	ME-SA	Ind-2001	e
viba_50504	VL6-J-T/ISA/2022		97.9	0	O	ME-SA	Ind-2001	e

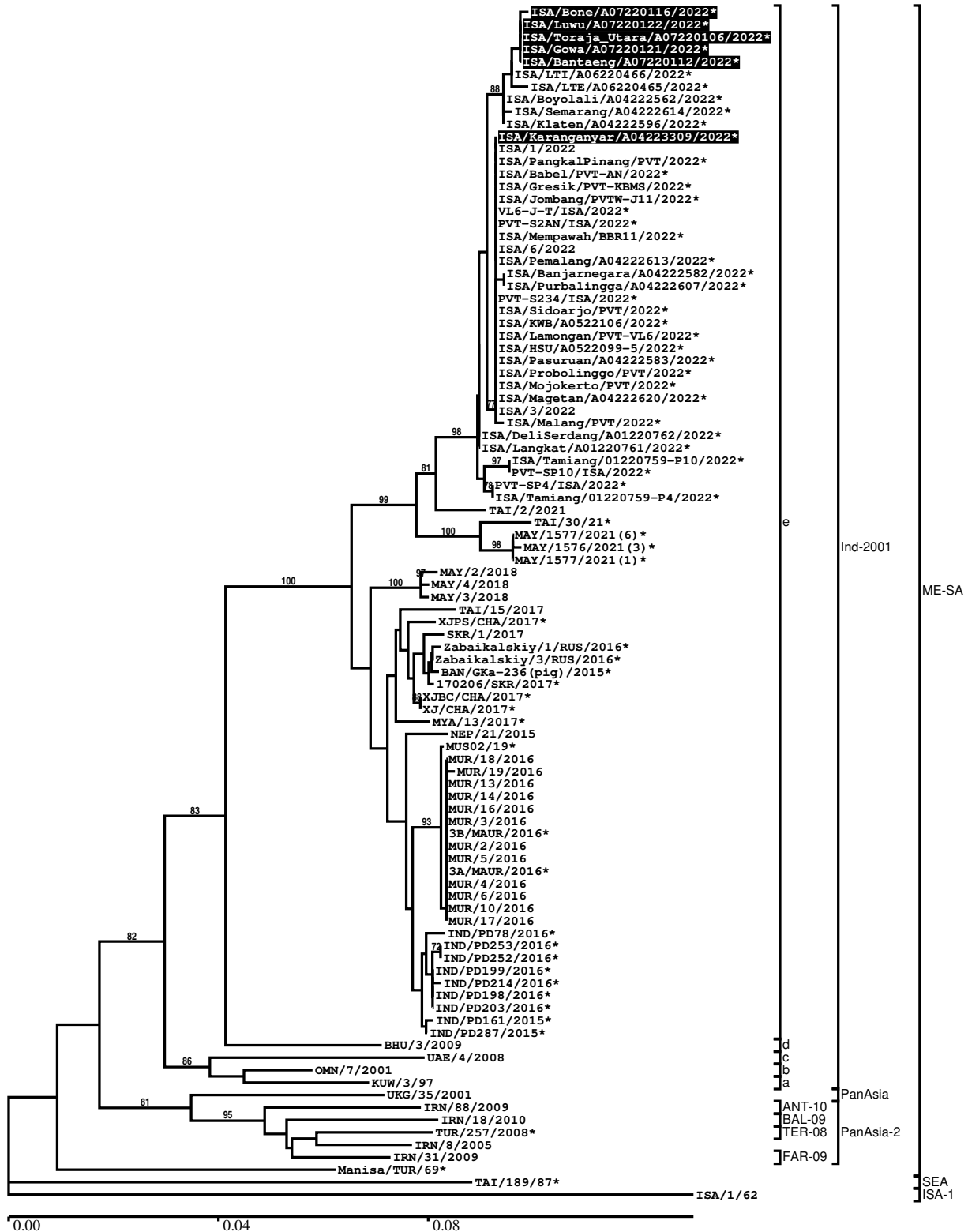
Most Closely Related Prototype Sequences

see <http://www.wrlfmd.org/fmdv-genome/fmd-prototype-strains>

sequence	virus name	Host	% Id.	# Ambig.	serotype	topotype	lineage	sublineage
viba_30238	MUR/19/2016	cattle	93.4	0	O	ME-SA	Ind-2001	e
viba_293	BHU/3/2009	cattle	90.0	0	O	ME-SA	Ind-2001	d
viba_541	OMN/7/2001	bovine	89.6	0	O	ME-SA	Ind-2001	b
viba_705	KUW/3/97	bovine	88.6	0	O	ME-SA	Ind-2001	a
viba_397	UAE/4/2008	gazelle	87.4	0	O	ME-SA	Ind-2001	c
viba_650	IRN/8/2005	ovine	86.4	0	O	ME-SA	PanAsia-2	
viba_285	UKG/35/2001	porcine	86.1	0	O	ME-SA	PanAsia	
viba_359	Manisa/TUR/69		86.1	0	O	ME-SA		
viba_666	IRN/18/2010	cattle	85.8	0	O	ME-SA	PanAsia-2	BAL-09
viba_719	IRN/88/2009		85.7	0	O	ME-SA	PanAsia-2	ANT-10

Report on FMDV O in Indonesia in 2022

Batch: WRLMEG/2022/00030



*, not a WRLFMD Reference Number

Analysis Parameters

VP1 subsequence extractor:	vp1_O
Query sequence set:	WRLMEG/2022/00030-Indonesia-O (6 sequences)
Sequence database set:	allseqs_O (5718 sequences)
Prototype sequence set:	!prototypes_O (49 sequences)
Number of related sequences reported:	10
Minimal VP1 subsequence match length	600
Sequence alignment method:	muscle (default parameters)
Sequence alignment length:	636
Phylogeny reconstruction method:	fdnadist, fneighbor
Number of bootstrap samples:	1000
Random seed for bootstrapping:	1
Displaying bootstrap values above:	70.0%
Number of sequences in tree capped at:	100
Number of prototype sequences in tree:	12
VIBASys version:	reflabs-1.1.2

Sequences in the Phylogenetic Tree

All sequences in the tree are in taxonomic group FMDV/O

label	accession	host(s)	lab	country	taxonomic information
ISA/Bone/A07220116/2022*	n/a	n/a	PUSVETMA	Indonesia	ME-SA/Ind-2001/e
ISA/Luwu/A07220122/2022*	n/a	n/a	PUSVETMA	Indonesia	ME-SA/Ind-2001/e
ISA/Toraja_Utara/A07220106/2022*	n/a	n/a	PUSVETMA	Indonesia	ME-SA/Ind-2001/e
ISA/Gowa/A07220121/2022*	n/a	n/a	PUSVETMA	Indonesia	ME-SA/Ind-2001/e
ISA/Bantaeng/A07220112/2022*	n/a	n/a	PUSVETMA	Indonesia	ME-SA/Ind-2001/e
ISA/LTI/A06220466/2022*	ON854946	cattle	DICWY	Indonesia	ME-SA/Ind-2001/e
ISA/LTE/A06220465/2022*	ON854945	cattle	DICWY	Indonesia	ME-SA/Ind-2001/e
ISA/Boyolali/A04222562/2022*	ON854942	cattle	DICWY	Indonesia	ME-SA/Ind-2001/e
ISA/Semarang/A04222614/2022*	ON854955	cattle	DICWY	Indonesia	ME-SA/Ind-2001/e
ISA/Klaten/A04222596/2022*	ON854950	cattle	DICWY	Indonesia	ME-SA/Ind-2001/e
ISA/Karanganyar/A04223309/2022*	n/a	n/a	PUSVETMA	Indonesia	ME-SA/Ind-2001/e
ISA/1/2022	n/a	cattle	WRLFMD	Indonesia	ME-SA/Ind-2001/e
ISA/Pangkalpinang/PVT/2022*	ON854944	cattle	DICWY	Indonesia	ME-SA/Ind-2001/e
ISA/Babel/PVT-AN/2022*	ON854939	cattle	DICWY	Indonesia	ME-SA/Ind-2001/e
ISA/Gresik/PVT-KBMS/2022*	ON854952	cattle	DICWY	Indonesia	ME-SA/Ind-2001/e
ISA/Jombang/PVTW-J11/2022*	ON854951	goat	DICWY	Indonesia	ME-SA/Ind-2001/e
VL6-J-T/ISA/2022*	n/a	n/a	PUSVETSMA	Indonesia	ME-SA/Ind-2001/e
PVT-S2AN/ISA/2022*	n/a	cattle	PUSVETSMA	Indonesia	ME-SA/Ind-2001/e
ISA/Mempawah/BBR11/2022*	ON854947	goat	DICWY	Indonesia	ME-SA/Ind-2001/e
ISA/6/2022	n/a	cattle	WRLFMD	Indonesia	ME-SA/Ind-2001/e
ISA/Pemalang/A04222613/2022*	ON854954	cattle	DICWY	Indonesia	ME-SA/Ind-2001/e
ISA/Banjarnegara/A04222582/2022*	ON854949	cattle	DICWY	Indonesia	ME-SA/Ind-2001/e
ISA/Purbalingga/A04222607/2022*	ON854953	cattle	DICWY	Indonesia	ME-SA/Ind-2001/e
PVT-S234/ISA/2022*	n/a	cattle	PUSVETSMA	Indonesia	ME-SA/Ind-2001/e
ISA/Sidoarjo/PVT/2022*	ON854937	cattle	DICWY	Indonesia	ME-SA/Ind-2001/e
ISA/KWB/A0522106/2022*	ON854948	cattle	DICWY	Indonesia	ME-SA/Ind-2001/e
ISA/Lamongan/PVT-VL6/2022*	ON854936	cattle	DICWY	Indonesia	ME-SA/Ind-2001/e
ISA/HSU/A0522099-5/2022*	ON854957	goat	DICWY	Indonesia	ME-SA/Ind-2001/e
ISA/Pasuruan/A04222583/2022*	ON854943	cattle	DICWY	Indonesia	ME-SA/Ind-2001/e
ISA/Probolinggo/PVT/2022*	ON854940	cattle	DICWY	Indonesia	ME-SA/Ind-2001/e
ISA/Mojokerto/PVT/2022*	ON854938	cattle	DICWY	Indonesia	ME-SA/Ind-2001/e
ISA/Magetan/A04222620/2022*	ON854956	cattle	DICWY	Indonesia	ME-SA/Ind-2001/e
ISA/3/2022	n/a	cattle	WRLFMD	Indonesia	ME-SA/Ind-2001/e
ISA/Malang/PVT/2022*	ON854941	cattle	DICWY	Indonesia	ME-SA/Ind-2001/e
ISA/DeliSerdang/A01220762/2022*	ON854935	cattle	DICWY	Indonesia	ME-SA/Ind-2001/e
ISA/Langkat/A01220761/2022*	ON854934	cattle	DICWY	Indonesia	ME-SA/Ind-2001/e

continued on next page

label	accession	host(s)	lab	country	taxonomic information
ISA/Tamiang/01220759-P10/2022*	ON783874	cattle	DICWY	Indonesia	ME-SA/Ind-2001/e
PVT-SP10/ISA/2022*	n/a	cattle	PUSVETSMA	Indonesia	ME-SA/Ind-2001/e
PVT-SP4/ISA/2022*	n/a	cattle	PUSVETSMA	Indonesia	ME-SA/Ind-2001/e
ISA/Tamiang/01220759-P4/2022*	ON783873	cattle	DICWY	Indonesia	ME-SA/Ind-2001/e
TAI/2/2021	n/a	cattle	WRLFMD	Thailand	ME-SA/Ind-2001/e
TAI/30/21*	n/a	bovine	TRRL	Thailand	ME-SA/Ind-2001/e
MAY/1577/2021(6)*	n/a	cattle	MNFMDL	Malaysia	ME-SA/Ind-2001/e
MAY/1576/2021(3)*	n/a	cattle	MNFMDL	Malaysia	ME-SA/Ind-2001/e
MAY/1577/2021(1)*	n/a	cattle	MNFMDL	Malaysia	ME-SA/Ind-2001/e
MAY/2/2018	n/a	cattle	WRLFMD	Malaysia	ME-SA/Ind-2001/e
MAY/4/2018	n/a	cattle	WRLFMD	Malaysia	ME-SA/Ind-2001/e
MAY/3/2018	n/a	cattle	WRLFMD	Malaysia	ME-SA/Ind-2001/e
TAI/15/2017	n/a	cattle	WRLFMD	Thailand	ME-SA/Ind-2001/e
XJPS/CHA/2017*	KY696707	n/a	LVRI	China	ME-SA/Ind-2001/e
SKR/1/2017	MG972599	cattle	WRLFMD	Republic of Korea (South Korea)	ME-SA/Ind-2001/e
Zabaikalskiy/1/RUS/2016*	MG983720	cattle	ARRIAH	Russia	ME-SA/Ind-2001/e
Zabaikalskiy/3/RUS/2016*	MG972584	cattle	ARRIAH	Russia	ME-SA/Ind-2001/e
BAN/GKa-236(pig)/2015*	KX712091	porcine	Univ Dhaka	Bangladesh	ME-SA/Ind-2001/e
170206/SKR/2017*	n/a	cattle	QIA	Republic of Korea (South Korea)	ME-SA/Ind-2001/e
XJBC/CHA/2017*	KY696708	n/a	LVRI	China	ME-SA/Ind-2001/e
XJ/CHA/2017*	MF461724	cattle	LVRI	China	ME-SA/Ind-2001/e
MYA/13/2017*	MG972527	cattle	TRRL	Myanmar	ME-SA/Ind-2001/e
NEP/21/2015	MG972549	cattle	WRLFMD	Nepal	ME-SA/Ind-2001/e
MUS02/19*	n/a	bovine	BVI	Mauritius	ME-SA/Ind-2001/e
MUR/18/2016	MG972509	cattle	WRLFMD	Mauritius	ME-SA/Ind-2001/e
MUR/19/2016	MG972510	cattle	WRLFMD	Mauritius	ME-SA/Ind-2001/e
MUR/13/2016	MG972504	cattle	WRLFMD	Mauritius	ME-SA/Ind-2001/e
MUR/14/2016	MG972505	cattle	WRLFMD	Mauritius	ME-SA/Ind-2001/e
MUR/16/2016	MG972507	cattle	WRLFMD	Mauritius	ME-SA/Ind-2001/e
MUR/3/2016	MG972495	cattle	WRLFMD	Mauritius	ME-SA/Ind-2001/e
3B/MAUR/2016*	n/a	bovine	ANSES	Mauritius	ME-SA/Ind-2001/e
MUR/2/2016	MG972494	cattle	WRLFMD	Mauritius	ME-SA/Ind-2001/e
MUR/5/2016	MG972497	cattle	WRLFMD	Mauritius	ME-SA/Ind-2001/e
3A/MAUR/2016*	n/a	bovine	ANSES	Mauritius	ME-SA/Ind-2001/e
MUR/4/2016	MG972496	cattle	WRLFMD	Mauritius	ME-SA/Ind-2001/e
MUR/6/2016	MG972498	cattle	WRLFMD	Mauritius	ME-SA/Ind-2001/e
MUR/10/2016	MG972502	cattle	WRLFMD	Mauritius	ME-SA/Ind-2001/e
MUR/17/2016	MG972508	cattle	WRLFMD	Mauritius	ME-SA/Ind-2001/e
IND/PD78/2016*	MT909668	water buffalo	PD-FMD	India	ME-SA/Ind-2001/e
IND/PD253/2016*	MT909681	cattle	PD-FMD	India	ME-SA/Ind-2001/e
IND/PD252/2016*	MT909680	cattle	PD-FMD	India	ME-SA/Ind-2001/e
IND/PD199/2016*	MT909673	cattle	PD-FMD	India	ME-SA/Ind-2001/e
IND/PD214/2016*	MT909675	cattle	PD-FMD	India	ME-SA/Ind-2001/e
IND/PD198/2016*	MT909672	cattle	PD-FMD	India	ME-SA/Ind-2001/e
IND/PD203/2016*	MT909674	cattle	PD-FMD	India	ME-SA/Ind-2001/e
IND/PD161/2015*	MT909637	cattle	PD-FMD	India	ME-SA/Ind-2001/e
IND/PD287/2015*	MT909659	cattle	PD-FMD	India	ME-SA/Ind-2001/e
BHU/3/2009	KM921814	cattle	WRLFMD	Bhutan	ME-SA/Ind-2001/d
UAE/4/2008	KM921876	gazelle	WRLFMD	United Arab Emirates	ME-SA/Ind-2001/c
OMN/7/2001	DQ164941	bovine	WRLFMD	Oman	ME-SA/Ind-2001/b
KUW/3/97	DQ164904	bovine	WRLFMD	Kuwait	ME-SA/Ind-2001/a
UKG/35/2001	AJ539141	porcine	PIADC	United Kingdom	ME-SA/PanAsia
IRN/88/2009	KY091282	n/a	WRLFMD	Iran	ME-SA/PanAsia-2/ANT-10
IRN/18/2010	KY091283	cattle	WRLFMD	Iran	ME-SA/PanAsia-2/BAL-09
TUR/257/2008*	n/a	n/a	FMDI-Ankara	Turkey	ME-SA/PanAsia-2/TER-08
IRN/8/2005	KY091281	ovine	WRLFMD	Iran	ME-SA/PanAsia-2
IRN/31/2009	KY091284	cattle	WRLFMD	Iran	ME-SA/PanAsia-2/FAR-09

continued on next page

label	accession	host(s)	lab	country	taxonomic information
Manisa/TUR/69*	AY593823	n/a	PIADC	Turkey	ME-SA
TAI/189/87*	KY091288	bovine	TRRL	Thailand	SEA
ISA/1/62	AJ303500	n/a	WRLFMD	Indonesia	ISA-1

*, not a WRLFMD Reference Number

n/a, not available