

FAO World Reference Laboratory for Foot-and-Mouth Disease (WRLFMD)

Genotyping Report

FMDV serotype: A
Country: Thailand
Year: 2021
Batch: WRLMEG/2022/00014
No. of sequences: 12
Report date: 13th June 2022
Report generated by: Nick Knowles
Report checked by: Jemma Wadsworth



Copyright © 2022 The Pirbright Institute, Ash Road, Pirbright, Woking GU24 0NF, United Kingdom.

www: <http://www.wrlfmd.org/>

email: reporting@pirbright.ac.uk

The contents of this report should not be reproduced without permission.

Virus sample name:	TAI/20/21
Sender reference:	20/21
Location of origin:	On Tai, San Kamphaeng, Chiang Mai
Country of origin:	Thailand
Date of collection:	08/09/2021
Host species:	bovine
Serotype:	A
Topotype:	ASIA
Lineage:	Sea-97
Sublineage:	
Sequence length:	630
Ambiguities:	0
Material submitted for sequencing:	n/a
Harvest date of material:	n/a
Primers:	n/a
Received for sequencing:	n/a
Created:	13/06/2022
Last updated:	13/06/2022
VIBASys IDs: sample 50780, genome 50781, sequence viba_50782, sequencing info 50783	

Most Closely Related Sequences

sequence	virus name	Host	% Id.	# Ambig.	serotype	topotype	lineage	sublineage
viba_50786	TAI/28/21	bovine	100.0	0	A	ASIA	Sea-97	
viba_50822	TAI/64/21	bovine	99.7	0	A	ASIA	Sea-97	
viba_50802	TAI/40/21	bovine	99.7	0	A	ASIA	Sea-97	
viba_50794	TAI/32/21	bovine	99.7	0	A	ASIA	Sea-97	
viba_50806	TAI/50/21	bovine	99.7	0	A	ASIA	Sea-97	
viba_50790	TAI/29/21	bovine	99.7	0	A	ASIA	Sea-97	
viba_50826	TAI/79/21	bovine	99.7	0	A	ASIA	Sea-97	
viba_50798	TAI/48/21	bovine	99.5	0	A	ASIA	Sea-97	
viba_50814	TAI/56/21	bovine	99.2	0	A	ASIA	Sea-97	
viba_50818	TAI/62/21	bovine	99.2	0	A	ASIA	Sea-97	

Most Closely Related Prototype Sequences

see <http://www.wrlfmd.org/fmdv-genome/fmd-prototype-strains>

sequence	virus name	Host	% Id.	# Ambig.	serotype	topotype	lineage	sublineage
viba_122	TAI/7/2003	bovine	90.5	0	A	ASIA	Sea-97	
viba_625	TAI/2/97		88.3	0	A	ASIA	Sea-97	
viba_630	TAI/118/87		86.2	0	A	ASIA	Thai-87	
viba_677	IRQ/24/64	bovine	81.8	0	A	ASIA	A22	
viba_336	IRN/1/96	bovine	80.7	1	A	ASIA	Iran-96	
viba_864	IND/40/2000	cattle	80.6	0	A	ASIA	G-VII	
viba_682	IRN/2/87	bovine	80.6	0	A	ASIA	Iran-87	
viba_173	UGA/13/66	bovine	80.0	0	A	AFRICA	G-VII	
viba_843	SAU/16/95		80.0	0	A	ASIA	G-VII	
viba_594	IRN/1/2011	bovine	79.9	0	A	ASIA	Iran-05	FAR-11

Virus sample name:	TAI/28/21
Sender reference:	28/21
Location of origin:	On Klang, Mae On, Chiang Mai
Country of origin:	Thailand
Date of collection:	28/09/2021
Host species:	bovine
Serotype:	A
Topotype:	ASIA
Lineage:	Sea-97
Sublineage:	
Sequence length:	630
Ambiguities:	0
Material submitted for sequencing:	n/a
Harvest date of material:	n/a
Primers:	n/a
Received for sequencing:	n/a
Created:	13/06/2022
Last updated:	13/06/2022
VIBASys IDs: sample 50784, genome 50785, sequence viba_50786, sequencing info 50787	

Most Closely Related Sequences

sequence	virus name	Host	% Id.	# Ambig.	serotype	topotype	lineage	sublineage
viba_50782	TAI/20/21	bovine	100.0	0	A	ASIA	Sea-97	
viba_50822	TAI/64/21	bovine	99.7	0	A	ASIA	Sea-97	
viba_50802	TAI/40/21	bovine	99.7	0	A	ASIA	Sea-97	
viba_50794	TAI/32/21	bovine	99.7	0	A	ASIA	Sea-97	
viba_50806	TAI/50/21	bovine	99.7	0	A	ASIA	Sea-97	
viba_50790	TAI/29/21	bovine	99.7	0	A	ASIA	Sea-97	
viba_50826	TAI/79/21	bovine	99.7	0	A	ASIA	Sea-97	
viba_50798	TAI/48/21	bovine	99.5	0	A	ASIA	Sea-97	
viba_50814	TAI/56/21	bovine	99.2	0	A	ASIA	Sea-97	
viba_50818	TAI/62/21	bovine	99.2	0	A	ASIA	Sea-97	

Most Closely Related Prototype Sequences

see <http://www.wrlfmd.org/fmdv-genome/fmd-prototype-strains>

sequence	virus name	Host	% Id.	# Ambig.	serotype	topotype	lineage	sublineage
viba_122	TAI/7/2003	bovine	90.5	0	A	ASIA	Sea-97	
viba_625	TAI/2/97		88.3	0	A	ASIA	Sea-97	
viba_630	TAI/118/87		86.2	0	A	ASIA	Thai-87	
viba_677	IRQ/24/64	bovine	81.8	0	A	ASIA	A22	
viba_336	IRN/1/96	bovine	80.7	1	A	ASIA	Iran-96	
viba_864	IND/40/2000	cattle	80.6	0	A	ASIA	G-VII	
viba_682	IRN/2/87	bovine	80.6	0	A	ASIA	Iran-87	
viba_173	UGA/13/66	bovine	80.0	0	A	AFRICA	G-VII	
viba_843	SAU/16/95		80.0	0	A	ASIA	G-VII	
viba_594	IRN/1/2011	bovine	79.9	0	A	ASIA	Iran-05	FAR-11

Virus sample name:	TAI/29/21
Sender reference:	29/21
Location of origin:	Yu Wa, San Pa Tong, Chiang Mai
Country of origin:	Thailand
Date of collection:	04/10/2021
Host species:	bovine
Serotype:	A
Topotype:	ASIA
Lineage:	Sea-97
Sublineage:	
Sequence length:	630
Ambiguities:	0
Material submitted for sequencing:	n/a
Harvest date of material:	n/a
Primers:	n/a
Received for sequencing:	n/a
Created:	13/06/2022
Last updated:	13/06/2022
VIBASys IDs: sample 50788, genome 50789, sequence viba_50790, sequencing info 50791	

Most Closely Related Sequences

sequence	virus name	Host	% Id.	# Ambig.	serotype	topotype	lineage	sublineage
viba_50802	TAI/40/21	bovine	100.0	0	A	ASIA	Sea-97	
viba_50822	TAI/64/21	bovine	99.7	0	A	ASIA	Sea-97	
viba_50786	TAI/28/21	bovine	99.7	0	A	ASIA	Sea-97	
viba_50794	TAI/32/21	bovine	99.7	0	A	ASIA	Sea-97	
viba_50806	TAI/50/21	bovine	99.7	0	A	ASIA	Sea-97	
viba_50782	TAI/20/21	bovine	99.7	0	A	ASIA	Sea-97	
viba_50826	TAI/79/21	bovine	99.7	0	A	ASIA	Sea-97	
viba_50798	TAI/48/21	bovine	99.5	0	A	ASIA	Sea-97	
viba_50814	TAI/56/21	bovine	99.2	0	A	ASIA	Sea-97	
viba_50818	TAI/62/21	bovine	99.2	0	A	ASIA	Sea-97	

Most Closely Related Prototype Sequences

see <http://www.wrlfmd.org/fmdv-genome/fmd-prototype-strains>

sequence	virus name	Host	% Id.	# Ambig.	serotype	topotype	lineage	sublineage
viba_122	TAI/7/2003	bovine	90.5	0	A	ASIA	Sea-97	
viba_625	TAI/2/97		88.3	0	A	ASIA	Sea-97	
viba_630	TAI/118/87		85.9	0	A	ASIA	Thai-87	
viba_677	IRQ/24/64	bovine	81.7	0	A	ASIA	A22	
viba_864	IND/40/2000	cattle	80.5	0	A	ASIA	G-VII	
viba_336	IRN/1/96	bovine	80.5	1	A	ASIA	Iran-96	
viba_682	IRN/2/87	bovine	80.5	0	A	ASIA	Iran-87	
viba_173	UGA/13/66	bovine	80.0	0	A	AFRICA	G-VII	
viba_843	SAU/16/95		79.9	0	A	ASIA	G-VII	
viba_594	IRN/1/2011	bovine	79.7	0	A	ASIA	Iran-05	FAR-11

Virus sample name:	TAI/32/21
Sender reference:	32/21
Location of origin:	Mae Tha, Mae On, Chiang Mai
Country of origin:	Thailand
Date of collection:	05/10/2021
Host species:	bovine
Serotype:	A
Topotype:	ASIA
Lineage:	Sea-97
Sublineage:	
Sequence length:	630
Ambiguities:	0
Material submitted for sequencing:	n/a
Harvest date of material:	n/a
Primers:	n/a
Received for sequencing:	n/a
Created:	13/06/2022
Last updated:	13/06/2022
VIBASys IDs: sample 50792, genome 50793, sequence viba_50794, sequencing info 50795	

Most Closely Related Sequences

sequence	virus name	Host	% Id.	# Ambig.	serotype	topotype	lineage	sublineage
viba_50826	TAI/79/21	bovine	100.0	0	A	ASIA	Sea-97	
viba_50798	TAI/48/21	bovine	99.8	0	A	ASIA	Sea-97	
viba_50822	TAI/64/21	bovine	99.7	0	A	ASIA	Sea-97	
viba_50786	TAI/28/21	bovine	99.7	0	A	ASIA	Sea-97	
viba_50802	TAI/40/21	bovine	99.7	0	A	ASIA	Sea-97	
viba_50806	TAI/50/21	bovine	99.7	0	A	ASIA	Sea-97	
viba_50782	TAI/20/21	bovine	99.7	0	A	ASIA	Sea-97	
viba_50790	TAI/29/21	bovine	99.7	0	A	ASIA	Sea-97	
viba_50814	TAI/56/21	bovine	99.5	0	A	ASIA	Sea-97	
viba_50818	TAI/62/21	bovine	99.5	0	A	ASIA	Sea-97	

Most Closely Related Prototype Sequences

see <http://www.wrlfmd.org/fmdv-genome/fmd-prototype-strains>

sequence	virus name	Host	% Id.	# Ambig.	serotype	topotype	lineage	sublineage
viba_122	TAI/7/2003	bovine	90.5	0	A	ASIA	Sea-97	
viba_625	TAI/2/97		88.3	0	A	ASIA	Sea-97	
viba_630	TAI/118/87		85.9	0	A	ASIA	Thai-87	
viba_677	IRQ/24/64	bovine	81.7	0	A	ASIA	A22	
viba_864	IND/40/2000	cattle	80.5	0	A	ASIA	G-VII	
viba_336	IRN/1/96	bovine	80.5	1	A	ASIA	Iran-96	
viba_682	IRN/2/87	bovine	80.5	0	A	ASIA	Iran-87	
viba_173	UGA/13/66	bovine	80.3	0	A	AFRICA	G-VII	
viba_843	SAU/16/95		79.9	0	A	ASIA	G-VII	
viba_785	KEN/3/64		79.7	0	A	AFRICA	G-III	

Virus sample name:	TAI/40/21
Sender reference:	40/21
Location of origin:	On Nuea, Mae On, Chiang Mai
Country of origin:	Thailand
Date of collection:	11/10/2021
Host species:	bovine
Serotype:	A
Topotype:	ASIA
Lineage:	Sea-97
Sublineage:	
Sequence length:	630
Ambiguities:	0
Material submitted for sequencing:	n/a
Harvest date of material:	n/a
Primers:	n/a
Received for sequencing:	n/a
Created:	13/06/2022
Last updated:	13/06/2022
VIBASys IDs: sample 50800, genome 50801, sequence viba_50802, sequencing info 50803	

Most Closely Related Sequences

sequence	virus name	Host	% Id.	# Ambig.	serotype	topotype	lineage	sublineage
viba_50790	TAI/29/21	bovine	100.0	0	A	ASIA	Sea-97	
viba_50822	TAI/64/21	bovine	99.7	0	A	ASIA	Sea-97	
viba_50786	TAI/28/21	bovine	99.7	0	A	ASIA	Sea-97	
viba_50794	TAI/32/21	bovine	99.7	0	A	ASIA	Sea-97	
viba_50806	TAI/50/21	bovine	99.7	0	A	ASIA	Sea-97	
viba_50782	TAI/20/21	bovine	99.7	0	A	ASIA	Sea-97	
viba_50826	TAI/79/21	bovine	99.7	0	A	ASIA	Sea-97	
viba_50798	TAI/48/21	bovine	99.5	0	A	ASIA	Sea-97	
viba_50814	TAI/56/21	bovine	99.2	0	A	ASIA	Sea-97	
viba_50818	TAI/62/21	bovine	99.2	0	A	ASIA	Sea-97	

Most Closely Related Prototype Sequences

see <http://www.wrlfmd.org/fmdv-genome/fmd-prototype-strains>

sequence	virus name	Host	% Id.	# Ambig.	serotype	topotype	lineage	sublineage
viba_122	TAI/7/2003	bovine	90.5	0	A	ASIA	Sea-97	
viba_625	TAI/2/97		88.3	0	A	ASIA	Sea-97	
viba_630	TAI/118/87		85.9	0	A	ASIA	Thai-87	
viba_677	IRQ/24/64	bovine	81.7	0	A	ASIA	A22	
viba_864	IND/40/2000	cattle	80.5	0	A	ASIA	G-VII	
viba_336	IRN/1/96	bovine	80.5	1	A	ASIA	Iran-96	
viba_682	IRN/2/87	bovine	80.5	0	A	ASIA	Iran-87	
viba_173	UGA/13/66	bovine	80.0	0	A	AFRICA	G-VII	
viba_843	SAU/16/95		79.9	0	A	ASIA	G-VII	
viba_594	IRN/1/2011	bovine	79.7	0	A	ASIA	Iran-05	FAR-11

Virus sample name:	TAI/48/21
Sender reference:	48/21
Location of origin:	Chae Chang, San Kamphaeng, Chiang Mai
Country of origin:	Thailand
Date of collection:	11/10/2021
Host species:	bovine
Serotype:	A
Topotype:	ASIA
Lineage:	Sea-97
Sublineage:	
Sequence length:	630
Ambiguities:	0
Material submitted for sequencing:	n/a
Harvest date of material:	n/a
Primers:	n/a
Received for sequencing:	n/a
Created:	13/06/2022
Last updated:	13/06/2022
VIBASys IDs: sample 50796, genome 50797, sequence viba_50798, sequencing info 50799	

Most Closely Related Sequences

sequence	virus name	Host	% Id.	# Ambig.	serotype	topotype	lineage	sublineage
viba_50794	TAI/32/21	bovine	99.8	0	A	ASIA	Sea-97	
viba_50826	TAI/79/21	bovine	99.8	0	A	ASIA	Sea-97	
viba_50822	TAI/64/21	bovine	99.5	0	A	ASIA	Sea-97	
viba_50786	TAI/28/21	bovine	99.5	0	A	ASIA	Sea-97	
viba_50802	TAI/40/21	bovine	99.5	0	A	ASIA	Sea-97	
viba_50806	TAI/50/21	bovine	99.5	0	A	ASIA	Sea-97	
viba_50782	TAI/20/21	bovine	99.5	0	A	ASIA	Sea-97	
viba_50790	TAI/29/21	bovine	99.5	0	A	ASIA	Sea-97	
viba_50814	TAI/56/21	bovine	99.4	0	A	ASIA	Sea-97	
viba_50818	TAI/62/21	bovine	99.4	0	A	ASIA	Sea-97	

Most Closely Related Prototype Sequences

see <http://www.wrlfmd.org/fmdv-genome/fmd-prototype-strains>

sequence	virus name	Host	% Id.	# Ambig.	serotype	topotype	lineage	sublineage
viba_122	TAI/7/2003	bovine	90.3	0	A	ASIA	Sea-97	
viba_625	TAI/2/97		88.1	0	A	ASIA	Sea-97	
viba_630	TAI/118/87		85.7	0	A	ASIA	Thai-87	
viba_677	IRQ/24/64	bovine	81.5	0	A	ASIA	A22	
viba_864	IND/40/2000	cattle	80.3	0	A	ASIA	G-VII	
viba_336	IRN/1/96	bovine	80.3	1	A	ASIA	Iran-96	
viba_682	IRN/2/87	bovine	80.3	0	A	ASIA	Iran-87	
viba_173	UGA/13/66	bovine	80.2	0	A	AFRICA	G-VII	
viba_843	SAU/16/95		79.7	0	A	ASIA	G-VII	
viba_594	IRN/1/2011	bovine	79.6	0	A	ASIA	Iran-05	FAR-11

Virus sample name:	TAI/50/21
Sender reference:	50/21
Location of origin:	Wiang Yong, Mueang Lamphun, Lamphun
Country of origin:	Thailand
Date of collection:	21/10/2021
Host species:	bovine
Serotype:	A
Topotype:	ASIA
Lineage:	Sea-97
Sublineage:	
Sequence length:	630
Ambiguities:	0
Material submitted for sequencing:	n/a
Harvest date of material:	n/a
Primers:	n/a
Received for sequencing:	n/a
Created:	13/06/2022
Last updated:	13/06/2022
VIBASys IDs: sample 50804, genome 50805, sequence viba_50806, sequencing info 50807	

Most Closely Related Sequences

sequence	virus name	Host	% Id.	# Ambig.	serotype	topotype	lineage	sublineage
viba_50822	TAI/64/21	bovine	100.0	0	A	ASIA	Sea-97	
viba_50786	TAI/28/21	bovine	99.7	0	A	ASIA	Sea-97	
viba_50802	TAI/40/21	bovine	99.7	0	A	ASIA	Sea-97	
viba_50794	TAI/32/21	bovine	99.7	0	A	ASIA	Sea-97	
viba_50782	TAI/20/21	bovine	99.7	0	A	ASIA	Sea-97	
viba_50790	TAI/29/21	bovine	99.7	0	A	ASIA	Sea-97	
viba_50826	TAI/79/21	bovine	99.7	0	A	ASIA	Sea-97	
viba_50798	TAI/48/21	bovine	99.5	0	A	ASIA	Sea-97	
viba_50814	TAI/56/21	bovine	99.2	0	A	ASIA	Sea-97	
viba_50818	TAI/62/21	bovine	99.2	0	A	ASIA	Sea-97	

Most Closely Related Prototype Sequences

see <http://www.wrlfmd.org/fmdv-genome/fmd-prototype-strains>

sequence	virus name	Host	% Id.	# Ambig.	serotype	topotype	lineage	sublineage
viba_122	TAI/7/2003	bovine	90.5	0	A	ASIA	Sea-97	
viba_625	TAI/2/97		88.3	0	A	ASIA	Sea-97	
viba_630	TAI/118/87		85.9	0	A	ASIA	Thai-87	
viba_677	IRQ/24/64	bovine	82.0	0	A	ASIA	A22	
viba_682	IRN/2/87	bovine	80.8	0	A	ASIA	Iran-87	
viba_864	IND/40/2000	cattle	80.5	0	A	ASIA	G-VII	
viba_336	IRN/1/96	bovine	80.5	1	A	ASIA	Iran-96	
viba_173	UGA/13/66	bovine	80.3	0	A	AFRICA	G-VII	
viba_843	SAU/16/95		79.9	0	A	ASIA	G-VII	
viba_594	IRN/1/2011	bovine	79.7	0	A	ASIA	Iran-05	FAR-11

Virus sample name:	TAI/56/21
Sender reference:	56/21
Location of origin:	Mae Sa, Mae Rim, Chiang Mai
Country of origin:	Thailand
Date of collection:	02/11/2021
Host species:	bovine
Serotype:	A
Topotype:	ASIA
Lineage:	Sea-97
Sublineage:	
Sequence length:	630
Ambiguities:	0
Material submitted for sequencing:	n/a
Harvest date of material:	n/a
Primers:	n/a
Received for sequencing:	n/a
Created:	13/06/2022
Last updated:	13/06/2022
VIBASys IDs: sample 50812, genome 50813, sequence viba_50814, sequencing info 50815	

Most Closely Related Sequences

sequence	virus name	Host	% Id.	# Ambig.	serotype	topotype	lineage	sublineage
viba_50818	TAI/62/21	bovine	100.0	0	A	ASIA	Sea-97	
viba_50810	TAI/57/21	bovine	100.0	0	A	ASIA	Sea-97	
viba_50794	TAI/32/21	bovine	99.5	0	A	ASIA	Sea-97	
viba_50826	TAI/79/21	bovine	99.5	0	A	ASIA	Sea-97	
viba_50798	TAI/48/21	bovine	99.4	0	A	ASIA	Sea-97	
viba_50822	TAI/64/21	bovine	99.2	0	A	ASIA	Sea-97	
viba_50786	TAI/28/21	bovine	99.2	0	A	ASIA	Sea-97	
viba_50802	TAI/40/21	bovine	99.2	0	A	ASIA	Sea-97	
viba_50806	TAI/50/21	bovine	99.2	0	A	ASIA	Sea-97	
viba_50782	TAI/20/21	bovine	99.2	0	A	ASIA	Sea-97	

Most Closely Related Prototype Sequences

see <http://www.wrlfmd.org/fmdv-genome/fmd-prototype-strains>

sequence	virus name	Host	% Id.	# Ambig.	serotype	topotype	lineage	sublineage
viba_122	TAI/7/2003	bovine	90.0	0	A	ASIA	Sea-97	
viba_625	TAI/2/97		88.1	0	A	ASIA	Sea-97	
viba_630	TAI/118/87		85.7	0	A	ASIA	Thai-87	
viba_677	IRQ/24/64	bovine	81.5	0	A	ASIA	A22	
viba_682	IRN/2/87	bovine	80.5	0	A	ASIA	Iran-87	
viba_336	IRN/1/96	bovine	80.3	1	A	ASIA	Iran-96	
viba_864	IND/40/2000	cattle	80.0	0	A	ASIA	G-VII	
viba_594	IRN/1/2011	bovine	79.9	0	A	ASIA	Iran-05	FAR-11
viba_173	UGA/13/66	bovine	79.8	0	A	AFRICA	G-VII	
viba_34575	BAD/AFG/L2814/2009	cattle	79.8	0	A	ASIA	Iran-05	BAD-09

Virus sample name:	TAI/57/21
Sender reference:	57/21
Location of origin:	Pa Pong, Doi Saket, Chiang Mai
Country of origin:	Thailand
Date of collection:	02/11/2021
Host species:	bovine
Serotype:	A
Topotype:	ASIA
Lineage:	Sea-97
Sublineage:	
Sequence length:	630
Ambiguities:	0
Material submitted for sequencing:	n/a
Harvest date of material:	n/a
Primers:	n/a
Received for sequencing:	n/a
Created:	13/06/2022
Last updated:	13/06/2022
VIBASys IDs: sample 50808, genome 50809, sequence viba_50810, sequencing info 50811	

Most Closely Related Sequences

sequence	virus name	Host	% Id.	# Ambig.	serotype	topotype	lineage	sublineage
viba_50814	TAI/56/21	bovine	100.0	0	A	ASIA	Sea-97	
viba_50818	TAI/62/21	bovine	100.0	0	A	ASIA	Sea-97	
viba_50794	TAI/32/21	bovine	99.5	0	A	ASIA	Sea-97	
viba_50826	TAI/79/21	bovine	99.5	0	A	ASIA	Sea-97	
viba_50798	TAI/48/21	bovine	99.4	0	A	ASIA	Sea-97	
viba_50822	TAI/64/21	bovine	99.2	0	A	ASIA	Sea-97	
viba_50786	TAI/28/21	bovine	99.2	0	A	ASIA	Sea-97	
viba_50802	TAI/40/21	bovine	99.2	0	A	ASIA	Sea-97	
viba_50806	TAI/50/21	bovine	99.2	0	A	ASIA	Sea-97	
viba_50782	TAI/20/21	bovine	99.2	0	A	ASIA	Sea-97	

Most Closely Related Prototype Sequences

see <http://www.wrlfmd.org/fmdv-genome/fmd-prototype-strains>

sequence	virus name	Host	% Id.	# Ambig.	serotype	topotype	lineage	sublineage
viba_122	TAI/7/2003	bovine	90.0	0	A	ASIA	Sea-97	
viba_625	TAI/2/97		88.1	0	A	ASIA	Sea-97	
viba_630	TAI/118/87		85.7	0	A	ASIA	Thai-87	
viba_677	IRQ/24/64	bovine	81.5	0	A	ASIA	A22	
viba_682	IRN/2/87	bovine	80.5	0	A	ASIA	Iran-87	
viba_336	IRN/1/96	bovine	80.3	1	A	ASIA	Iran-96	
viba_864	IND/40/2000	cattle	80.0	0	A	ASIA	G-VII	
viba_594	IRN/1/2011	bovine	79.9	0	A	ASIA	Iran-05	FAR-11
viba_173	UGA/13/66	bovine	79.8	0	A	AFRICA	G-VII	
viba_34575	BAD/AFG/L2814/2009	cattle	79.8	0	A	ASIA	Iran-05	BAD-09

Virus sample name:	TAI/62/21
Sender reference:	62/21
Location of origin:	Tha Pla Duk, Mae Tha, Lamphun
Country of origin:	Thailand
Date of collection:	03/11/2021
Host species:	bovine
Serotype:	A
Topotype:	ASIA
Lineage:	Sea-97
Sublineage:	
Sequence length:	630
Ambiguities:	0
Material submitted for sequencing:	n/a
Harvest date of material:	n/a
Primers:	n/a
Received for sequencing:	n/a
Created:	13/06/2022
Last updated:	13/06/2022
VIBASys IDs: sample 50816, genome 50817, sequence viba_50818, sequencing info 50819	

Most Closely Related Sequences

sequence	virus name	Host	% Id.	# Ambig.	serotype	topotype	lineage	sublineage
viba_50814	TAI/56/21	bovine	100.0	0	A	ASIA	Sea-97	
viba_50810	TAI/57/21	bovine	100.0	0	A	ASIA	Sea-97	
viba_50794	TAI/32/21	bovine	99.5	0	A	ASIA	Sea-97	
viba_50826	TAI/79/21	bovine	99.5	0	A	ASIA	Sea-97	
viba_50798	TAI/48/21	bovine	99.4	0	A	ASIA	Sea-97	
viba_50822	TAI/64/21	bovine	99.2	0	A	ASIA	Sea-97	
viba_50786	TAI/28/21	bovine	99.2	0	A	ASIA	Sea-97	
viba_50802	TAI/40/21	bovine	99.2	0	A	ASIA	Sea-97	
viba_50806	TAI/50/21	bovine	99.2	0	A	ASIA	Sea-97	
viba_50782	TAI/20/21	bovine	99.2	0	A	ASIA	Sea-97	

Most Closely Related Prototype Sequences

see <http://www.wrlfmd.org/fmdv-genome/fmd-prototype-strains>

sequence	virus name	Host	% Id.	# Ambig.	serotype	topotype	lineage	sublineage
viba_122	TAI/7/2003	bovine	90.0	0	A	ASIA	Sea-97	
viba_625	TAI/2/97		88.1	0	A	ASIA	Sea-97	
viba_630	TAI/118/87		85.7	0	A	ASIA	Thai-87	
viba_677	IRQ/24/64	bovine	81.5	0	A	ASIA	A22	
viba_682	IRN/2/87	bovine	80.5	0	A	ASIA	Iran-87	
viba_336	IRN/1/96	bovine	80.3	1	A	ASIA	Iran-96	
viba_864	IND/40/2000	cattle	80.0	0	A	ASIA	G-VII	
viba_594	IRN/1/2011	bovine	79.9	0	A	ASIA	Iran-05	FAR-11
viba_173	UGA/13/66	bovine	79.8	0	A	AFRICA	G-VII	
viba_34575	BAD/AFGL2814/2009	cattle	79.8	0	A	ASIA	Iran-05	BAD-09

Virus sample name:	TAI/64/21
Sender reference:	64/21
Location of origin:	Pa Sak, Mueang Lamphun, Lamphun
Country of origin:	Thailand
Date of collection:	10/11/2021
Host species:	bovine
Serotype:	A
Topotype:	ASIA
Lineage:	Sea-97
Sublineage:	
Sequence length:	630
Ambiguities:	0
Material submitted for sequencing:	n/a
Harvest date of material:	n/a
Primers:	n/a
Received for sequencing:	n/a
Created:	13/06/2022
Last updated:	13/06/2022
VIBASys IDs: sample 50820, genome 50821, sequence viba_50822, sequencing info 50823	

Most Closely Related Sequences

sequence	virus name	Host	% Id.	# Ambig.	serotype	topotype	lineage	sublineage
viba_50806	TAI/50/21	bovine	100.0	0	A	ASIA	Sea-97	
viba_50786	TAI/28/21	bovine	99.7	0	A	ASIA	Sea-97	
viba_50802	TAI/40/21	bovine	99.7	0	A	ASIA	Sea-97	
viba_50794	TAI/32/21	bovine	99.7	0	A	ASIA	Sea-97	
viba_50782	TAI/20/21	bovine	99.7	0	A	ASIA	Sea-97	
viba_50790	TAI/29/21	bovine	99.7	0	A	ASIA	Sea-97	
viba_50826	TAI/79/21	bovine	99.7	0	A	ASIA	Sea-97	
viba_50798	TAI/48/21	bovine	99.5	0	A	ASIA	Sea-97	
viba_50814	TAI/56/21	bovine	99.2	0	A	ASIA	Sea-97	
viba_50818	TAI/62/21	bovine	99.2	0	A	ASIA	Sea-97	

Most Closely Related Prototype Sequences

see <http://www.wrlfmd.org/fmdv-genome/fmd-prototype-strains>

sequence	virus name	Host	% Id.	# Ambig.	serotype	topotype	lineage	sublineage
viba_122	TAI/7/2003	bovine	90.5	0	A	ASIA	Sea-97	
viba_625	TAI/2/97		88.3	0	A	ASIA	Sea-97	
viba_630	TAI/118/87		85.9	0	A	ASIA	Thai-87	
viba_677	IRQ/24/64	bovine	82.0	0	A	ASIA	A22	
viba_682	IRN/2/87	bovine	80.8	0	A	ASIA	Iran-87	
viba_864	IND/40/2000	cattle	80.5	0	A	ASIA	G-VII	
viba_336	IRN/1/96	bovine	80.5	1	A	ASIA	Iran-96	
viba_173	UGA/13/66	bovine	80.3	0	A	AFRICA	G-VII	
viba_843	SAU/16/95		79.9	0	A	ASIA	G-VII	
viba_594	IRN/1/2011	bovine	79.7	0	A	ASIA	Iran-05	FAR-11

Virus sample name:	TAI/79/21
Sender reference:	79/21
Location of origin:	San Na Meng, San Sai, Chiang Mai
Country of origin:	Thailand
Date of collection:	23/11/2021
Host species:	bovine
Serotype:	A
Topotype:	ASIA
Lineage:	Sea-97
Sublineage:	
Sequence length:	630
Ambiguities:	0
Material submitted for sequencing:	n/a
Harvest date of material:	n/a
Primers:	n/a
Received for sequencing:	n/a
Created:	13/06/2022
Last updated:	13/06/2022
VIBASys IDs: sample 50824, genome 50825, sequence viba_50826, sequencing info 50827	

Most Closely Related Sequences

sequence	virus name	Host	% Id.	# Ambig.	serotype	topotype	lineage	sublineage
viba_50794	TAI/32/21	bovine	100.0	0	A	ASIA	Sea-97	
viba_50798	TAI/48/21	bovine	99.8	0	A	ASIA	Sea-97	
viba_50822	TAI/64/21	bovine	99.7	0	A	ASIA	Sea-97	
viba_50786	TAI/28/21	bovine	99.7	0	A	ASIA	Sea-97	
viba_50802	TAI/40/21	bovine	99.7	0	A	ASIA	Sea-97	
viba_50806	TAI/50/21	bovine	99.7	0	A	ASIA	Sea-97	
viba_50782	TAI/20/21	bovine	99.7	0	A	ASIA	Sea-97	
viba_50790	TAI/29/21	bovine	99.7	0	A	ASIA	Sea-97	
viba_50814	TAI/56/21	bovine	99.5	0	A	ASIA	Sea-97	
viba_50818	TAI/62/21	bovine	99.5	0	A	ASIA	Sea-97	

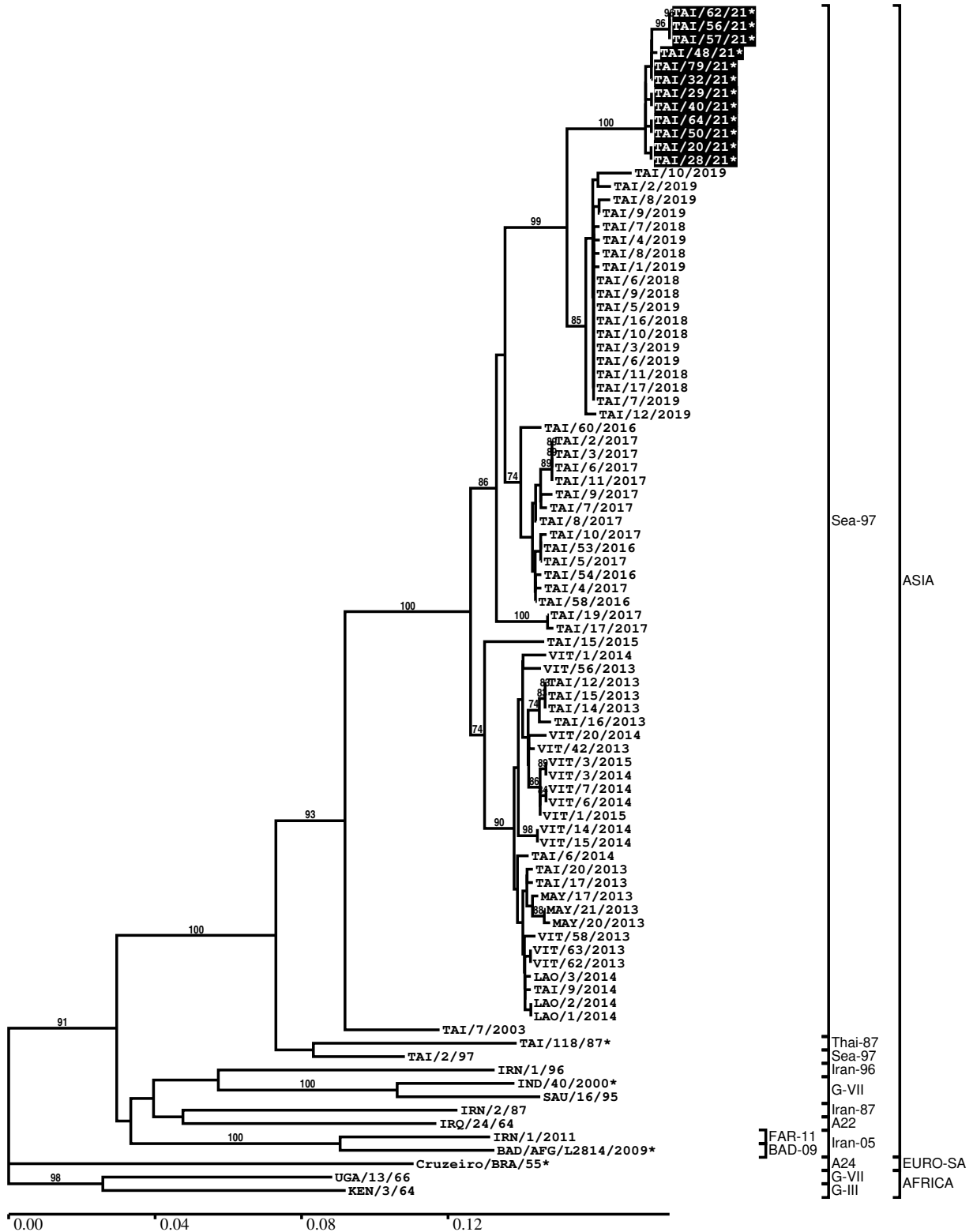
Most Closely Related Prototype Sequences

see <http://www.wrlfmd.org/fmdv-genome/fmd-prototype-strains>

sequence	virus name	Host	% Id.	# Ambig.	serotype	topotype	lineage	sublineage
viba_122	TAI/7/2003	bovine	90.5	0	A	ASIA	Sea-97	
viba_625	TAI/2/97		88.3	0	A	ASIA	Sea-97	
viba_630	TAI/118/87		85.9	0	A	ASIA	Thai-87	
viba_677	IRQ/24/64	bovine	81.7	0	A	ASIA	A22	
viba_864	IND/40/2000	cattle	80.5	0	A	ASIA	G-VII	
viba_336	IRN/1/96	bovine	80.5	1	A	ASIA	Iran-96	
viba_682	IRN/2/87	bovine	80.5	0	A	ASIA	Iran-87	
viba_173	UGA/13/66	bovine	80.3	0	A	AFRICA	G-VII	
viba_843	SAU/16/95		79.9	0	A	ASIA	G-VII	
viba_785	KEN/3/64		79.7	0	A	AFRICA	G-III	

Report on FMDV A in Thailand in 2021

Batch: WRLMEG/2022/00014



*, not a WRLFMD Reference Number

Analysis Parameters

VP1 subsequence extractor:	vp1_A
Query sequence set:	WRLMEG/2022/00014-Thailand-A (12 sequences)
Sequence database set:	allseqs_A (2321 sequences)
Prototype sequence set:	!prototypes_A (40 sequences)
Number of related sequences reported:	10
Minimal VP1 subsequence match length	600
Sequence alignment method:	muscle (default parameters)
Sequence alignment length:	633
Phylogeny reconstruction method:	fdnadist, fneighbor
Number of bootstrap samples:	1000
Random seed for bootstrapping:	1
Displaying bootstrap values above:	70.0%
Number of sequences in tree capped at:	100
Number of prototype sequences in tree:	12
VIBASys version:	reflabs-1.1.2

Sequences in the Phylogenetic Tree

All sequences in the tree are in taxonomic group FMDV/A

label	accession	host(s)	lab	country	taxonomic information
TAI/62/21*	n/a	bovine	TRRL	Thailand	ASIA/Sea-97
TAI/56/21*	n/a	bovine	TRRL	Thailand	ASIA/Sea-97
TAI/57/21*	n/a	bovine	TRRL	Thailand	ASIA/Sea-97
TAI/48/21*	n/a	bovine	TRRL	Thailand	ASIA/Sea-97
TAI/79/21*	n/a	bovine	TRRL	Thailand	ASIA/Sea-97
TAI/32/21*	n/a	bovine	TRRL	Thailand	ASIA/Sea-97
TAI/29/21*	n/a	bovine	TRRL	Thailand	ASIA/Sea-97
TAI/40/21*	n/a	bovine	TRRL	Thailand	ASIA/Sea-97
TAI/64/21*	n/a	bovine	TRRL	Thailand	ASIA/Sea-97
TAI/50/21*	n/a	bovine	TRRL	Thailand	ASIA/Sea-97
TAI/20/21*	n/a	bovine	TRRL	Thailand	ASIA/Sea-97
TAI/28/21*	n/a	bovine	TRRL	Thailand	ASIA/Sea-97
TAI/10/2019	n/a	cattle	WRLFMD	Thailand	ASIA/Sea-97
TAI/2/2019	n/a	cattle	WRLFMD	Thailand	ASIA/Sea-97
TAI/8/2019	n/a	cattle	WRLFMD	Thailand	ASIA/Sea-97
TAI/9/2019	n/a	cattle	WRLFMD	Thailand	ASIA/Sea-97
TAI/7/2018	n/a	cattle	WRLFMD	Thailand	ASIA/Sea-97
TAI/4/2019	n/a	cattle	WRLFMD	Thailand	ASIA/Sea-97
TAI/8/2018	n/a	cattle	WRLFMD	Thailand	ASIA/Sea-97
TAI/1/2019	n/a	cattle	WRLFMD	Thailand	ASIA/Sea-97
TAI/6/2018	n/a	cattle	WRLFMD	Thailand	ASIA/Sea-97
TAI/9/2018	n/a	cattle	WRLFMD	Thailand	ASIA/Sea-97
TAI/5/2019	n/a	cattle	WRLFMD	Thailand	ASIA/Sea-97
TAI/16/2018	n/a	cattle	WRLFMD	Thailand	ASIA/Sea-97
TAI/10/2018	n/a	cattle	WRLFMD	Thailand	ASIA/Sea-97
TAI/3/2019	n/a	cattle	WRLFMD	Thailand	ASIA/Sea-97
TAI/6/2019	n/a	cattle	WRLFMD	Thailand	ASIA/Sea-97
TAI/11/2018	n/a	cattle	WRLFMD	Thailand	ASIA/Sea-97
TAI/17/2018	n/a	cattle	WRLFMD	Thailand	ASIA/Sea-97
TAI/7/2019	n/a	cattle	WRLFMD	Thailand	ASIA/Sea-97
TAI/12/2019	n/a	cattle	WRLFMD	Thailand	ASIA/Sea-97
TAI/60/2016	n/a	cattle	WRLFMD	Thailand	ASIA/Sea-97
TAI/2/2017	n/a	cattle	WRLFMD	Thailand	ASIA/Sea-97
TAI/3/2017	n/a	cattle	WRLFMD	Thailand	ASIA/Sea-97
TAI/6/2017	n/a	cattle	WRLFMD	Thailand	ASIA/Sea-97
TAI/11/2017	n/a	cattle	WRLFMD	Thailand	ASIA/Sea-97

continued on next page

label	accession	host(s)	lab	country	taxonomic information
TAI/9/2017	n/a	cattle	WRLFMD	Thailand	ASIA/Sea-97
TAI/7/2017	n/a	cattle	WRLFMD	Thailand	ASIA/Sea-97
TAI/8/2017	n/a	cattle	WRLFMD	Thailand	ASIA/Sea-97
TAI/10/2017	n/a	cattle	WRLFMD	Thailand	ASIA/Sea-97
TAI/53/2016	n/a	cattle	WRLFMD	Thailand	ASIA/Sea-97
TAI/5/2017	n/a	cattle	WRLFMD	Thailand	ASIA/Sea-97
TAI/54/2016	n/a	cattle	WRLFMD	Thailand	ASIA/Sea-97
TAI/4/2017	n/a	cattle	WRLFMD	Thailand	ASIA/Sea-97
TAI/58/2016	n/a	cattle	WRLFMD	Thailand	ASIA/Sea-97
TAI/19/2017	n/a	cattle	WRLFMD	Thailand	ASIA/Sea-97
TAI/17/2017	n/a	cattle	WRLFMD	Thailand	ASIA/Sea-97
TAI/15/2015	n/a	cattle	WRLFMD	Thailand	ASIA/Sea-97
VIT/1/2014	n/a	cattle	WRLFMD	Vietnam	ASIA/Sea-97
VIT/56/2013	n/a	cattle	WRLFMD	Vietnam	ASIA/Sea-97
TAI/12/2013	n/a	cattle	WRLFMD	Thailand	ASIA/Sea-97
TAI/15/2013	n/a	cattle	WRLFMD	Thailand	ASIA/Sea-97
TAI/14/2013	n/a	cattle	WRLFMD	Thailand	ASIA/Sea-97
TAI/16/2013	n/a	cattle	WRLFMD	Thailand	ASIA/Sea-97
VIT/20/2014	n/a	cattle	WRLFMD	Vietnam	ASIA/Sea-97
VIT/42/2013	n/a	cattle	WRLFMD	Vietnam	ASIA/Sea-97
VIT/3/2015	n/a	cattle	WRLFMD	Vietnam	ASIA/Sea-97
VIT/3/2014	n/a	cattle	WRLFMD	Vietnam	ASIA/Sea-97
VIT/7/2014	n/a	porcine	WRLFMD	Vietnam	ASIA/Sea-97
VIT/6/2014	n/a	porcine	WRLFMD	Vietnam	ASIA/Sea-97
VIT/1/2015	n/a	porcine	WRLFMD	Vietnam	ASIA/Sea-97
VIT/14/2014	n/a	cattle	WRLFMD	Vietnam	ASIA/Sea-97
VIT/15/2014	n/a	cattle	WRLFMD	Vietnam	ASIA/Sea-97
TAI/6/2014	n/a	cattle	WRLFMD	Thailand	ASIA/Sea-97
TAI/20/2013	n/a	cattle	WRLFMD	Thailand	ASIA/Sea-97
TAI/17/2013	n/a	cattle	WRLFMD	Thailand	ASIA/Sea-97
MAY/17/2013	n/a	cattle	WRLFMD	Malaysia	ASIA/Sea-97
MAY/21/2013	n/a	cattle	WRLFMD	Malaysia	ASIA/Sea-97
MAY/20/2013	n/a	cattle	WRLFMD	Malaysia	ASIA/Sea-97
VIT/58/2013	n/a	cattle	WRLFMD	Vietnam	ASIA/Sea-97
VIT/63/2013	n/a	cattle	WRLFMD	Vietnam	ASIA/Sea-97
VIT/62/2013	n/a	cattle	WRLFMD	Vietnam	ASIA/Sea-97
LAO/3/2014	n/a	cattle	WRLFMD	Laos	ASIA/Sea-97
TAI/9/2014	n/a	water buffalo	WRLFMD	Thailand	ASIA/Sea-97
LAO/2/2014	n/a	cattle	WRLFMD	Laos	ASIA/Sea-97
LAO/1/2014	n/a	cattle	WRLFMD	Laos	ASIA/Sea-97
TAI/7/2003	HQ116312	bovine	WRLFMD	Thailand	ASIA/Sea-97
TAI/118/87*	EF208777	n/a	WRLFMD	Thailand	ASIA/Thai-87
TAI/2/97	EF208778	n/a	WRLFMD	Thailand	ASIA/Sea-97
IRN/1/96	EF208771	bovine	WRLFMD	Iran	ASIA/Iran-96
IND/40/2000*	AF390646	cattle	PD-FMD	India	ASIA/G-VII
SAU/16/95	EU553874	n/a	WRLFMD	Saudi Arabia	ASIA/G-VII
IRN/2/87	EF208770	bovine	WRLFMD	Iran	ASIA/Iran-87
IRQ/24/64	AY593763	bovine	PIADC	Iraq	ASIA/A22
IRN/1/2011	KY091292	bovine	WRLFMD	Iran	ASIA/Iran-05/FAR-11
BAD/AFG/L2814/2009*	HQ439296	cattle	LINDHOLM	Afghanistan	ASIA/Iran-05/BAD-09
Cruzeiro/BRA/55*	AY593768	bovine	PIADC	Brazil	EURO-SA/A24
UGA/13/66	KF561705	bovine	WRLFMD	Uganda	AFRICA/G-VII
KEN/3/64	AY593761	n/a	PIADC	Kenya	AFRICA/G-III

*, not a WRLFMD Reference Number

n/a, not available