

FAO World Reference Laboratory for Foot-and-Mouth Disease (WRLFMD)

Genotyping Report

FMDV serotype: O
Country: India
Year: 2018
Batch: WRLMEG/2020/00039A
No. of sequences: 13
Report date: 7th January 2021
Report generated by: Nick Knowles
Report checked by: Jemma Wadsworth



Copyright © 2021 The Pirbright Institute, Ash Road, Pirbright, Woking GU24 0NF, United Kingdom.

www: <http://www.wrlfmd.org/>

email: reporting@pirbright.ac.uk

The contents of this report should not be reproduced without permission.

Virus sample name:	IND/PD38/2018
Sender reference:	PD38/2018
Location of origin:	Ramgarh, Nainital, Uttarakhand
Country of origin:	India
Date of collection:	24/02/2018
Host species:	cattle
Serotype:	O
Topotype:	ME-SA
Lineage:	SA-2018
Sublineage:	
Sequence length:	633
Ambiguities:	0
Material submitted for sequencing:	n/a
Harvest date of material:	n/a
Primers:	n/a
Received for sequencing:	n/a
Created:	29/12/2020
Last updated:	29/12/2020
VIBASys IDs: sample 47009, genome 47011, sequence viba_47012, sequencing info 47013	

Most Closely Related Sequences

sequence	virus name	Host	% Id.	# Ambig.	serotype	topotype	lineage	sublineage
viba_47044	IND/PD224/2018	cattle	97.8	0	O	ME-SA	SA-2018	
viba_47032	IND/PD57/2018	water buffalo	97.5	0	O	ME-SA	SA-2018	
viba_47016	IND/PD42/2018	cattle	97.5	0	O	ME-SA	SA-2018	
viba_47056	IND/PD325/2018	cattle	97.5	0	O	ME-SA	SA-2018	
viba_43912	SRL/16/2018	cattle	97.2	0	O	ME-SA	SA-2018	
viba_47024	IND/PD45/2018	cattle	96.8	0	O	ME-SA	SA-2018	
viba_47212	IND/IC231/2018	cattle	96.8	0	O	ME-SA	SA-2018	
viba_47216	IND/IC233/2018	cattle	96.8	0	O	ME-SA	SA-2018	
viba_47196	IND/IC207/2018	cattle	96.8	0	O	ME-SA	SA-2018	
viba_47052	IND/PD295/2018	cattle	96.8	0	O	ME-SA	SA-2018	

Most Closely Related Prototype Sequences

see <http://www.wrlfmd.org/fmdv-genome/fmd-prototype-strains>

sequence	virus name	Host	% Id.	# Ambig.	serotype	topotype	lineage	sublineage
viba_766	IRN/31/2009	cattle	90.7	0	O	ME-SA	PanAsia-2	FAR-09
viba_719	IRN/88/2009		90.7	0	O	ME-SA	PanAsia-2	ANT-10
viba_666	IRN/18/2010	cattle	90.2	0	O	ME-SA	PanAsia-2	BAL-09
viba_505	TUR/264/2009		90.2	0	O	ME-SA	PanAsia-2	SAN-09
viba_705	KUW/3/97	bovine	89.9	0	O	ME-SA	Ind-2001	a
viba_491	TUR/257/2008		89.9	0	O	ME-SA	PanAsia-2	TER-08
viba_650	IRN/8/2005	ovine	89.9	0	O	ME-SA	PanAsia-2	
viba_293	BHU/3/2009	cattle	89.7	0	O	ME-SA	Ind-2001	d
viba_397	UAE/4/2008	gazelle	89.7	0	O	ME-SA	Ind-2001	c
viba_541	OMN/7/2001	bovine	89.7	0	O	ME-SA	Ind-2001	b

Virus sample name:	IND/PD42/2018
Sender reference:	PD42/2018
Location of origin:	Dehradun, Uttarakhand
Country of origin:	India
Date of collection:	28/02/2018
Host species:	cattle
Serotype:	O
Topotype:	ME-SA
Lineage:	SA-2018
Sublineage:	
Sequence length:	633
Ambiguities:	0
Material submitted for sequencing:	n/a
Harvest date of material:	n/a
Primers:	n/a
Received for sequencing:	n/a
Created:	29/12/2020
Last updated:	29/12/2020
VIBASys IDs: sample 47014, genome 47015, sequence viba_47016, sequencing info 47017	

Most Closely Related Sequences

sequence	virus name	Host	% Id.	# Ambig.	serotype	topotype	lineage	sublineage
viba_47032	IND/PD57/2018	water buffalo	99.7	0	O	ME-SA	SA-2018	
viba_47056	IND/PD325/2018	cattle	99.7	0	O	ME-SA	SA-2018	
viba_47024	IND/PD45/2018	cattle	99.4	0	O	ME-SA	SA-2018	
viba_43912	SRL/16/2018	cattle	99.4	0	O	ME-SA	SA-2018	
viba_47052	IND/PD295/2018	cattle	99.4	0	O	ME-SA	SA-2018	
viba_47212	IND/IC231/2018	cattle	99.1	0	O	ME-SA	SA-2018	
viba_47216	IND/IC233/2018	cattle	99.1	0	O	ME-SA	SA-2018	
viba_47196	IND/IC207/2018	cattle	99.1	0	O	ME-SA	SA-2018	
viba_43916	SRL/17/2018	cattle	98.9	0	O	ME-SA	SA-2018	
viba_47208	IND/IC221/2018	cattle	98.6	0	O	ME-SA	SA-2018	

Most Closely Related Prototype Sequences

see <http://www.wrlfmd.org/fmdv-genome/fmd-prototype-strains>

sequence	virus name	Host	% Id.	# Ambig.	serotype	topotype	lineage	sublineage
viba_719	IRN/88/2009		91.2	0	O	ME-SA	PanAsia-2	ANT-10
viba_766	IRN/31/2009	cattle	90.8	0	O	ME-SA	PanAsia-2	FAR-09
viba_505	TUR/264/2009		90.5	0	O	ME-SA	PanAsia-2	SAN-09
viba_650	IRN/8/2005	ovine	90.4	0	O	ME-SA	PanAsia-2	
viba_666	IRN/18/2010	cattle	90.2	0	O	ME-SA	PanAsia-2	BAL-09
viba_491	TUR/257/2008		90.2	0	O	ME-SA	PanAsia-2	TER-08
viba_705	KUW/3/97	bovine	90.1	0	O	ME-SA	Ind-2001	a
viba_860	IRN/6/2015	cattle	89.9	0	O	ME-SA	PanAsia-2	QOM-15
viba_354	PAK/16/2010	cattle	89.6	0	O	ME-SA	PanAsia-2	PUN-10
viba_541	OMN/7/2001	bovine	89.6	0	O	ME-SA	Ind-2001	b

Virus sample name:	IND/PD45/2018
Sender reference:	PD45/2018
Location of origin:	Dehradun, Uttarakhand
Country of origin:	India
Date of collection:	28/02/2018
Host species:	cattle
Serotype:	O
Topotype:	ME-SA
Lineage:	SA-2018
Sublineage:	
Sequence length:	633
Ambiguities:	0
Material submitted for sequencing:	n/a
Harvest date of material:	n/a
Primers:	n/a
Received for sequencing:	n/a
Created:	29/12/2020
Last updated:	29/12/2020
VIBASys IDs: sample 47022, genome 47023, sequence viba_47024, sequencing info 47025	

Most Closely Related Sequences

sequence	virus name	Host	% Id.	# Ambig.	serotype	topotype	lineage	sublineage
viba_47052	IND/PD295/2018	cattle	99.7	0	O	ME-SA	SA-2018	
viba_47016	IND/PD42/2018	cattle	99.4	0	O	ME-SA	SA-2018	
viba_47032	IND/PD57/2018	water buffalo	99.1	0	O	ME-SA	SA-2018	
viba_47056	IND/PD325/2018	cattle	99.1	0	O	ME-SA	SA-2018	
viba_43912	SRL/16/2018	cattle	98.7	0	O	ME-SA	SA-2018	
viba_47212	IND/IC231/2018	cattle	98.4	0	O	ME-SA	SA-2018	
viba_47216	IND/IC233/2018	cattle	98.4	0	O	ME-SA	SA-2018	
viba_47196	IND/IC207/2018	cattle	98.4	0	O	ME-SA	SA-2018	
viba_47192	IND/IC202/2018	cattle	98.3	0	O	ME-SA	SA-2018	
viba_43916	SRL/17/2018	cattle	98.3	0	O	ME-SA	SA-2018	

Most Closely Related Prototype Sequences

see <http://www.wrlfmd.org/fmdv-genome/fmd-prototype-strains>

sequence	virus name	Host	% Id.	# Ambig.	serotype	topotype	lineage	sublineage
viba_719	IRN/88/2009		90.8	0	O	ME-SA	PanAsia-2	ANT-10
viba_766	IRN/31/2009	cattle	90.5	0	O	ME-SA	PanAsia-2	FAR-09
viba_505	TUR/264/2009		90.2	0	O	ME-SA	PanAsia-2	SAN-09
viba_650	IRN/8/2005	ovine	90.0	0	O	ME-SA	PanAsia-2	
viba_666	IRN/18/2010	cattle	89.9	0	O	ME-SA	PanAsia-2	BAL-09
viba_860	IRN/6/2015	cattle	89.9	0	O	ME-SA	PanAsia-2	QOM-15
viba_491	TUR/257/2008		89.9	0	O	ME-SA	PanAsia-2	TER-08
viba_705	KUW/3/97	bovine	89.7	0	O	ME-SA	Ind-2001	a
viba_354	PAK/16/2010	cattle	89.3	0	O	ME-SA	PanAsia-2	PUN-10
viba_541	OMN/7/2001	bovine	89.3	0	O	ME-SA	Ind-2001	b

Virus sample name:	IND/PD57/2018
Sender reference:	PD57/2018
Location of origin:	Tohana, Fatehabad, Haryana
Country of origin:	India
Date of collection:	24/02/2018
Host species:	water buffalo
Serotype:	O
Topotype:	ME-SA
Lineage:	SA-2018
Sublineage:	
Sequence length:	633
Ambiguities:	0
Material submitted for sequencing:	n/a
Harvest date of material:	n/a
Primers:	n/a
Received for sequencing:	n/a
Created:	29/12/2020
Last updated:	29/12/2020
VIBASys IDs: sample 47030, genome 47031, sequence viba_47032, sequencing info 47033	

Most Closely Related Sequences

sequence	virus name	Host	% Id.	# Ambig.	serotype	topotype	lineage	sublineage
viba_47016	IND/PD42/2018	cattle	99.7	0	O	ME-SA	SA-2018	
viba_47056	IND/PD325/2018	cattle	99.7	0	O	ME-SA	SA-2018	
viba_43912	SRL/16/2018	cattle	99.4	0	O	ME-SA	SA-2018	
viba_47052	IND/PD295/2018	cattle	99.4	0	O	ME-SA	SA-2018	
viba_47024	IND/PD45/2018	cattle	99.1	0	O	ME-SA	SA-2018	
viba_47212	IND/IC231/2018	cattle	99.1	0	O	ME-SA	SA-2018	
viba_47216	IND/IC233/2018	cattle	99.1	0	O	ME-SA	SA-2018	
viba_47196	IND/IC207/2018	cattle	99.1	0	O	ME-SA	SA-2018	
viba_43916	SRL/17/2018	cattle	98.9	0	O	ME-SA	SA-2018	
viba_47208	IND/IC221/2018	cattle	98.6	0	O	ME-SA	SA-2018	

Most Closely Related Prototype Sequences

see <http://www.wrlfmd.org/fmdv-genome/fmd-prototype-strains>

sequence	virus name	Host	% Id.	# Ambig.	serotype	topotype	lineage	sublineage
viba_719	IRN/88/2009		91.2	0	O	ME-SA	PanAsia-2	ANT-10
viba_766	IRN/31/2009	cattle	90.8	0	O	ME-SA	PanAsia-2	FAR-09
viba_505	TUR/264/2009		90.5	0	O	ME-SA	PanAsia-2	SAN-09
viba_650	IRN/8/2005	ovine	90.4	0	O	ME-SA	PanAsia-2	
viba_666	IRN/18/2010	cattle	90.2	0	O	ME-SA	PanAsia-2	BAL-09
viba_491	TUR/257/2008		90.2	0	O	ME-SA	PanAsia-2	TER-08
viba_705	KUW/3/97	bovine	90.1	0	O	ME-SA	Ind-2001	a
viba_860	IRN/6/2015	cattle	89.9	0	O	ME-SA	PanAsia-2	QOM-15
viba_354	PAK/16/2010	cattle	89.6	0	O	ME-SA	PanAsia-2	PUN-10
viba_541	OMN/7/2001	bovine	89.6	0	O	ME-SA	Ind-2001	b

Virus sample name:	IND/PD224/2018
Sender reference:	PD224/2018
Location of origin:	Kottukal, Kerala
Country of origin:	India
Date of collection:	30/03/2018
Host species:	cattle
Serotype:	O
Topotype:	ME-SA
Lineage:	SA-2018
Sublineage:	
Sequence length:	633
Ambiguities:	0
Material submitted for sequencing:	n/a
Harvest date of material:	n/a
Primers:	n/a
Received for sequencing:	n/a
Created:	29/12/2020
Last updated:	29/12/2020
VIBASys IDs: sample 47042, genome 47043, sequence viba_47044, sequencing info 47045	

Most Closely Related Sequences

sequence	virus name	Host	% Id.	# Ambig.	serotype	topotype	lineage	sublineage
viba_47012	IND/PD38/2018	cattle	97.8	0	O	ME-SA	SA-2018	
viba_47032	IND/PD57/2018	water buffalo	96.2	0	O	ME-SA	SA-2018	
viba_47016	IND/PD42/2018	cattle	96.2	0	O	ME-SA	SA-2018	
viba_47056	IND/PD325/2018	cattle	96.2	0	O	ME-SA	SA-2018	
viba_43912	SRL/16/2018	cattle	96.1	0	O	ME-SA	SA-2018	
viba_47024	IND/PD45/2018	cattle	95.6	0	O	ME-SA	SA-2018	
viba_47212	IND/IC231/2018	cattle	95.6	0	O	ME-SA	SA-2018	
viba_47216	IND/IC233/2018	cattle	95.6	0	O	ME-SA	SA-2018	
viba_43916	SRL/17/2018	cattle	95.6	0	O	ME-SA	SA-2018	
viba_47196	IND/IC207/2018	cattle	95.6	0	O	ME-SA	SA-2018	

Most Closely Related Prototype Sequences

see <http://www.wrlfmd.org/fmdv-genome/fmd-prototype-strains>

sequence	virus name	Host	% Id.	# Ambig.	serotype	topotype	lineage	sublineage
viba_541	OMN/7/2001	bovine	90.6	0	O	ME-SA	Ind-2001	b
viba_397	UAE/4/2008	gazelle	90.5	0	O	ME-SA	Ind-2001	c
viba_30238	MUR/19/2016	cattle	90.5	0	O	ME-SA	Ind-2001	e
viba_719	IRN/88/2009		90.2	0	O	ME-SA	PanAsia-2	ANT-10
viba_293	BHU/3/2009	cattle	90.0	0	O	ME-SA	Ind-2001	d
viba_705	KUW/3/97	bovine	89.7	0	O	ME-SA	Ind-2001	a
viba_666	IRN/18/2010	cattle	89.3	0	O	ME-SA	PanAsia-2	BAL-09
viba_766	IRN/31/2009	cattle	89.3	0	O	ME-SA	PanAsia-2	FAR-09
viba_505	TUR/264/2009		89.1	0	O	ME-SA	PanAsia-2	SAN-09
viba_491	TUR/257/2008		89.1	0	O	ME-SA	PanAsia-2	TER-08

Virus sample name:	IND/PD295/2018
Sender reference:	PD295/2018
Location of origin:	Uragahalli, Karnataka
Country of origin:	India
Date of collection:	16/05/2018
Host species:	cattle
Serotype:	O
Topotype:	ME-SA
Lineage:	SA-2018
Sublineage:	
Sequence length:	633
Ambiguities:	0
Material submitted for sequencing:	n/a
Harvest date of material:	n/a
Primers:	n/a
Received for sequencing:	n/a
Created:	29/12/2020
Last updated:	29/12/2020
VIBASys IDs: sample 47050, genome 47051, sequence viba_47052, sequencing info 47053	

Most Closely Related Sequences

sequence	virus name	Host	% Id.	# Ambig.	serotype	topotype	lineage	sublineage
viba_47024	IND/PD45/2018	cattle	99.7	0	O	ME-SA	SA-2018	
viba_47032	IND/PD57/2018	water buffalo	99.4	0	O	ME-SA	SA-2018	
viba_47016	IND/PD42/2018	cattle	99.4	0	O	ME-SA	SA-2018	
viba_47056	IND/PD325/2018	cattle	99.1	0	O	ME-SA	SA-2018	
viba_43912	SRL/16/2018	cattle	98.7	0	O	ME-SA	SA-2018	
viba_47212	IND/IC231/2018	cattle	98.4	0	O	ME-SA	SA-2018	
viba_47216	IND/IC233/2018	cattle	98.4	0	O	ME-SA	SA-2018	
viba_47196	IND/IC207/2018	cattle	98.4	0	O	ME-SA	SA-2018	
viba_43916	SRL/17/2018	cattle	98.3	0	O	ME-SA	SA-2018	
viba_47208	IND/IC221/2018	cattle	97.9	0	O	ME-SA	SA-2018	

Most Closely Related Prototype Sequences

see <http://www.wrlfmd.org/fmdv-genome/fmd-prototype-strains>

sequence	virus name	Host	% Id.	# Ambig.	serotype	topotype	lineage	sublineage
viba_719	IRN/88/2009		90.5	0	O	ME-SA	PanAsia-2	ANT-10
viba_766	IRN/31/2009	cattle	90.2	0	O	ME-SA	PanAsia-2	FAR-09
viba_505	TUR/264/2009		89.9	0	O	ME-SA	PanAsia-2	SAN-09
viba_650	IRN/8/2005	ovine	89.7	0	O	ME-SA	PanAsia-2	
viba_666	IRN/18/2010	cattle	89.6	0	O	ME-SA	PanAsia-2	BAL-09
viba_860	IRN/6/2015	cattle	89.6	0	O	ME-SA	PanAsia-2	QOM-15
viba_491	TUR/257/2008		89.6	0	O	ME-SA	PanAsia-2	TER-08
viba_705	KUW/3/97	bovine	89.4	0	O	ME-SA	Ind-2001	a
viba_541	OMN/7/2001	bovine	89.0	0	O	ME-SA	Ind-2001	b
viba_354	PAK/16/2010	cattle	88.9	0	O	ME-SA	PanAsia-2	PUN-10

Virus sample name:	IND/PD325/2018
Sender reference:	PD325/2018
Location of origin:	Bangalore North, Karnataka
Country of origin:	India
Date of collection:	30/05/2018
Host species:	cattle
Serotype:	O
Topotype:	ME-SA
Lineage:	SA-2018
Sublineage:	
Sequence length:	633
Ambiguities:	0
Material submitted for sequencing:	n/a
Harvest date of material:	n/a
Primers:	n/a
Received for sequencing:	n/a
Created:	29/12/2020
Last updated:	29/12/2020
VIBASys IDs: sample 47054, genome 47055, sequence viba_47056, sequencing info 47057	

Most Closely Related Sequences

sequence	virus name	Host	% Id.	# Ambig.	serotype	topotype	lineage	sublineage
viba_47032	IND/PD57/2018	water buffalo	99.7	0	O	ME-SA	SA-2018	
viba_47016	IND/PD42/2018	cattle	99.7	0	O	ME-SA	SA-2018	
viba_43912	SRL/16/2018	cattle	99.4	0	O	ME-SA	SA-2018	
viba_47024	IND/PD45/2018	cattle	99.1	0	O	ME-SA	SA-2018	
viba_47212	IND/IC231/2018	cattle	99.1	0	O	ME-SA	SA-2018	
viba_47216	IND/IC233/2018	cattle	99.1	0	O	ME-SA	SA-2018	
viba_47196	IND/IC207/2018	cattle	99.1	0	O	ME-SA	SA-2018	
viba_47052	IND/PD295/2018	cattle	99.1	0	O	ME-SA	SA-2018	
viba_43916	SRL/17/2018	cattle	98.9	0	O	ME-SA	SA-2018	
viba_47208	IND/IC221/2018	cattle	98.6	0	O	ME-SA	SA-2018	

Most Closely Related Prototype Sequences

see <http://www.wrlfmd.org/fmdv-genome/fmd-prototype-strains>

sequence	virus name	Host	% Id.	# Ambig.	serotype	topotype	lineage	sublineage
viba_719	IRN/88/2009		91.2	0	O	ME-SA	PanAsia-2	ANT-10
viba_766	IRN/31/2009	cattle	91.0	0	O	ME-SA	PanAsia-2	FAR-09
viba_505	TUR/264/2009		90.5	0	O	ME-SA	PanAsia-2	SAN-09
viba_650	IRN/8/2005	ovine	90.4	0	O	ME-SA	PanAsia-2	
viba_666	IRN/18/2010	cattle	90.2	0	O	ME-SA	PanAsia-2	BAL-09
viba_491	TUR/257/2008		90.2	0	O	ME-SA	PanAsia-2	TER-08
viba_705	KUW/3/97	bovine	90.1	0	O	ME-SA	Ind-2001	a
viba_860	IRN/6/2015	cattle	89.9	0	O	ME-SA	PanAsia-2	QOM-15
viba_354	PAK/16/2010	cattle	89.7	0	O	ME-SA	PanAsia-2	PUN-10
viba_541	OMN/7/2001	bovine	89.6	0	O	ME-SA	Ind-2001	b

Virus sample name:	IND/IC202/2018
Sender reference:	IC202/2018
Location of origin:	Erode, Tamil Nadu
Country of origin:	India
Date of collection:	20/11/2018
Host species:	cattle
Serotype:	O
Topotype:	ME-SA
Lineage:	SA-2018
Sublineage:	
Sequence length:	633
Ambiguities:	0
Material submitted for sequencing:	n/a
Harvest date of material:	n/a
Primers:	n/a
Received for sequencing:	n/a
Created:	29/12/2020
Last updated:	29/12/2020
VIBASys IDs: sample 47190, genome 47191, sequence viba_47192, sequencing info 47193	

Most Closely Related Sequences

sequence	virus name	Host	% Id.	# Ambig.	serotype	topotype	lineage	sublineage
viba_47212	IND/IC231/2018	cattle	99.2	0	O	ME-SA	SA-2018	
viba_47216	IND/IC233/2018	cattle	99.2	0	O	ME-SA	SA-2018	
viba_47196	IND/IC207/2018	cattle	99.2	0	O	ME-SA	SA-2018	
viba_47208	IND/IC221/2018	cattle	98.7	0	O	ME-SA	SA-2018	
viba_47204	IND/IC218/2018	cattle	98.7	0	O	ME-SA	SA-2018	
viba_47032	IND/PD57/2018	water buffalo	98.6	0	O	ME-SA	SA-2018	
viba_47016	IND/PD42/2018	cattle	98.6	0	O	ME-SA	SA-2018	
viba_47056	IND/PD325/2018	cattle	98.6	0	O	ME-SA	SA-2018	
viba_43912	SRL/16/2018	cattle	98.6	0	O	ME-SA	SA-2018	
viba_47024	IND/PD45/2018	cattle	98.3	0	O	ME-SA	SA-2018	

Most Closely Related Prototype Sequences

see <http://www.wrlfmd.org/fmdv-genome/fmd-prototype-strains>

sequence	virus name	Host	% Id.	# Ambig.	serotype	topotype	lineage	sublineage
viba_719	IRN/88/2009		91.3	0	O	ME-SA	PanAsia-2	ANT-10
viba_766	IRN/31/2009	cattle	91.0	0	O	ME-SA	PanAsia-2	FAR-09
viba_505	TUR/264/2009		90.7	0	O	ME-SA	PanAsia-2	SAN-09
viba_650	IRN/8/2005	ovine	90.5	0	O	ME-SA	PanAsia-2	
viba_666	IRN/18/2010	cattle	90.4	0	O	ME-SA	PanAsia-2	BAL-09
viba_491	TUR/257/2008		90.4	0	O	ME-SA	PanAsia-2	TER-08
viba_860	IRN/6/2015	cattle	90.0	0	O	ME-SA	PanAsia-2	QOM-15
viba_705	KUW/3/97	bovine	89.7	0	O	ME-SA	Ind-2001	a
viba_354	PAK/16/2010	cattle	89.6	0	O	ME-SA	PanAsia-2	PUN-10
viba_285	UKG/35/2001	porcine	89.4	0	O	ME-SA	PanAsia	

Virus sample name:	IND/IC207/2018
Sender reference:	IC207/2018
Location of origin:	Erode, Tamil Nadu
Country of origin:	India
Date of collection:	20/11/2018
Host species:	cattle
Serotype:	O
Topotype:	ME-SA
Lineage:	SA-2018
Sublineage:	
Sequence length:	633
Ambiguities:	0
Material submitted for sequencing:	n/a
Harvest date of material:	n/a
Primers:	n/a
Received for sequencing:	n/a
Created:	29/12/2020
Last updated:	29/12/2020
VIBASys IDs: sample 47194, genome 47195, sequence viba_47196, sequencing info 47197	

Most Closely Related Sequences

sequence	virus name	Host	% Id.	# Ambig.	serotype	topotype	lineage	sublineage
viba_47212	IND/IC231/2018	cattle	99.7	0	O	ME-SA	SA-2018	
viba_47216	IND/IC233/2018	cattle	99.7	0	O	ME-SA	SA-2018	
viba_47208	IND/IC221/2018	cattle	99.2	0	O	ME-SA	SA-2018	
viba_47192	IND/IC202/2018	cattle	99.2	0	O	ME-SA	SA-2018	
viba_47204	IND/IC218/2018	cattle	99.2	0	O	ME-SA	SA-2018	
viba_47032	IND/PD57/2018	water buffalo	99.1	0	O	ME-SA	SA-2018	
viba_47016	IND/PD42/2018	cattle	99.1	0	O	ME-SA	SA-2018	
viba_47056	IND/PD325/2018	cattle	99.1	0	O	ME-SA	SA-2018	
viba_43912	SRL/16/2018	cattle	99.1	0	O	ME-SA	SA-2018	
viba_43916	SRL/17/2018	cattle	98.6	0	O	ME-SA	SA-2018	

Most Closely Related Prototype Sequences

see <http://www.wrlfmd.org/fmdv-genome/fmd-prototype-strains>

sequence	virus name	Host	% Id.	# Ambig.	serotype	topotype	lineage	sublineage
viba_719	IRN/88/2009		90.8	0	O	ME-SA	PanAsia-2	ANT-10
viba_505	TUR/264/2009		90.5	0	O	ME-SA	PanAsia-2	SAN-09
viba_766	IRN/31/2009	cattle	90.5	0	O	ME-SA	PanAsia-2	FAR-09
viba_650	IRN/8/2005	ovine	90.0	0	O	ME-SA	PanAsia-2	
viba_666	IRN/18/2010	cattle	89.9	0	O	ME-SA	PanAsia-2	BAL-09
viba_491	TUR/257/2008		89.9	0	O	ME-SA	PanAsia-2	TER-08
viba_705	KUW/3/97	bovine	89.6	0	O	ME-SA	Ind-2001	a
viba_860	IRN/6/2015	cattle	89.6	0	O	ME-SA	PanAsia-2	QOM-15
viba_354	PAK/16/2010	cattle	89.3	0	O	ME-SA	PanAsia-2	PUN-10
viba_541	OMN/7/2001	bovine	89.1	0	O	ME-SA	Ind-2001	b

Virus sample name:	IND/IC218/2018
Sender reference:	IC218/2018
Location of origin:	Erode, Tamil Nadu
Country of origin:	India
Date of collection:	20/11/2018
Host species:	cattle
Serotype:	O
Topotype:	ME-SA
Lineage:	SA-2018
Sublineage:	
Sequence length:	633
Ambiguities:	0
Material submitted for sequencing:	n/a
Harvest date of material:	n/a
Primers:	n/a
Received for sequencing:	n/a
Created:	29/12/2020
Last updated:	29/12/2020
VIBASys IDs: sample 47202, genome 47203, sequence viba_47204, sequencing info 47205	

Most Closely Related Sequences

sequence	virus name	Host	% Id.	# Ambig.	serotype	topotype	lineage	sublineage
viba_47208	IND/IC221/2018	cattle	100.0	0	O	ME-SA	SA-2018	
viba_47212	IND/IC231/2018	cattle	99.2	0	O	ME-SA	SA-2018	
viba_47216	IND/IC233/2018	cattle	99.2	0	O	ME-SA	SA-2018	
viba_47196	IND/IC207/2018	cattle	99.2	0	O	ME-SA	SA-2018	
viba_47192	IND/IC202/2018	cattle	98.7	0	O	ME-SA	SA-2018	
viba_47032	IND/PD57/2018	water buffalo	98.6	0	O	ME-SA	SA-2018	
viba_47016	IND/PD42/2018	cattle	98.6	0	O	ME-SA	SA-2018	
viba_47056	IND/PD325/2018	cattle	98.6	0	O	ME-SA	SA-2018	
viba_43912	SRL/16/2018	cattle	98.6	0	O	ME-SA	SA-2018	
viba_43916	SRL/17/2018	cattle	98.1	0	O	ME-SA	SA-2018	

Most Closely Related Prototype Sequences

see <http://www.wrlfmd.org/fmdv-genome/fmd-prototype-strains>

sequence	virus name	Host	% Id.	# Ambig.	serotype	topotype	lineage	sublineage
viba_719	IRN/88/2009		90.4	0	O	ME-SA	PanAsia-2	ANT-10
viba_766	IRN/31/2009	cattle	90.0	0	O	ME-SA	PanAsia-2	FAR-09
viba_505	TUR/264/2009		89.7	0	O	ME-SA	PanAsia-2	SAN-09
viba_650	IRN/8/2005	ovine	89.6	0	O	ME-SA	PanAsia-2	
viba_666	IRN/18/2010	cattle	89.4	0	O	ME-SA	PanAsia-2	BAL-09
viba_491	TUR/257/2008		89.4	0	O	ME-SA	PanAsia-2	TER-08
viba_354	PAK/16/2010	cattle	89.1	0	O	ME-SA	PanAsia-2	PUN-10
viba_705	KUW/3/97	bovine	89.1	0	O	ME-SA	Ind-2001	a
viba_860	IRN/6/2015	cattle	89.1	0	O	ME-SA	PanAsia-2	QOM-15
viba_541	OMN/7/2001	bovine	88.6	0	O	ME-SA	Ind-2001	b

Virus sample name:	IND/IC221/2018
Sender reference:	IC221/2018
Location of origin:	Erode, Tamil Nadu
Country of origin:	India
Date of collection:	20/11/2018
Host species:	cattle
Serotype:	O
Topotype:	ME-SA
Lineage:	SA-2018
Sublineage:	
Sequence length:	633
Ambiguities:	0
Material submitted for sequencing:	n/a
Harvest date of material:	n/a
Primers:	n/a
Received for sequencing:	n/a
Created:	29/12/2020
Last updated:	29/12/2020
VIBASys IDs: sample 47206, genome 47207, sequence viba_47208, sequencing info 47209	

Most Closely Related Sequences

sequence	virus name	Host	% Id.	# Ambig.	serotype	topotype	lineage	sublineage
viba_47204	IND/IC218/2018	cattle	100.0	0	O	ME-SA	SA-2018	
viba_47212	IND/IC231/2018	cattle	99.2	0	O	ME-SA	SA-2018	
viba_47216	IND/IC233/2018	cattle	99.2	0	O	ME-SA	SA-2018	
viba_47196	IND/IC207/2018	cattle	99.2	0	O	ME-SA	SA-2018	
viba_47192	IND/IC202/2018	cattle	98.7	0	O	ME-SA	SA-2018	
viba_47032	IND/PD57/2018	water buffalo	98.6	0	O	ME-SA	SA-2018	
viba_47016	IND/PD42/2018	cattle	98.6	0	O	ME-SA	SA-2018	
viba_47056	IND/PD325/2018	cattle	98.6	0	O	ME-SA	SA-2018	
viba_43912	SRL/16/2018	cattle	98.6	0	O	ME-SA	SA-2018	
viba_43916	SRL/17/2018	cattle	98.1	0	O	ME-SA	SA-2018	

Most Closely Related Prototype Sequences

see <http://www.wrlfmd.org/fmdv-genome/fmd-prototype-strains>

sequence	virus name	Host	% Id.	# Ambig.	serotype	topotype	lineage	sublineage
viba_719	IRN/88/2009		90.4	0	O	ME-SA	PanAsia-2	ANT-10
viba_766	IRN/31/2009	cattle	90.0	0	O	ME-SA	PanAsia-2	FAR-09
viba_505	TUR/264/2009		89.7	0	O	ME-SA	PanAsia-2	SAN-09
viba_650	IRN/8/2005	ovine	89.6	0	O	ME-SA	PanAsia-2	
viba_666	IRN/18/2010	cattle	89.4	0	O	ME-SA	PanAsia-2	BAL-09
viba_491	TUR/257/2008		89.4	0	O	ME-SA	PanAsia-2	TER-08
viba_354	PAK/16/2010	cattle	89.1	0	O	ME-SA	PanAsia-2	PUN-10
viba_705	KUW/3/97	bovine	89.1	0	O	ME-SA	Ind-2001	a
viba_860	IRN/6/2015	cattle	89.1	0	O	ME-SA	PanAsia-2	QOM-15
viba_541	OMN/7/2001	bovine	88.6	0	O	ME-SA	Ind-2001	b

Virus sample name:	IND/IC231/2018
Sender reference:	IC231/2018
Location of origin:	Erode, Tamil Nadu
Country of origin:	India
Date of collection:	20/11/2018
Host species:	cattle
Serotype:	O
Topotype:	ME-SA
Lineage:	SA-2018
Sublineage:	
Sequence length:	633
Ambiguities:	0
Material submitted for sequencing:	n/a
Harvest date of material:	n/a
Primers:	n/a
Received for sequencing:	n/a
Created:	29/12/2020
Last updated:	29/12/2020
VIBASys IDs: sample 47210, genome 47211, sequence viba_47212, sequencing info 47213	

Most Closely Related Sequences

sequence	virus name	Host	% Id.	# Ambig.	serotype	topotype	lineage	sublineage
viba_47216	IND/IC233/2018	cattle	100.0	0	O	ME-SA	SA-2018	
viba_47196	IND/IC207/2018	cattle	99.7	0	O	ME-SA	SA-2018	
viba_47208	IND/IC221/2018	cattle	99.2	0	O	ME-SA	SA-2018	
viba_47192	IND/IC202/2018	cattle	99.2	0	O	ME-SA	SA-2018	
viba_47204	IND/IC218/2018	cattle	99.2	0	O	ME-SA	SA-2018	
viba_47032	IND/PD57/2018	water buffalo	99.1	0	O	ME-SA	SA-2018	
viba_47016	IND/PD42/2018	cattle	99.1	0	O	ME-SA	SA-2018	
viba_47056	IND/PD325/2018	cattle	99.1	0	O	ME-SA	SA-2018	
viba_43912	SRL/16/2018	cattle	99.1	0	O	ME-SA	SA-2018	
viba_43916	SRL/17/2018	cattle	98.6	0	O	ME-SA	SA-2018	

Most Closely Related Prototype Sequences

see <http://www.wrlfmd.org/fmdv-genome/fmd-prototype-strains>

sequence	virus name	Host	% Id.	# Ambig.	serotype	topotype	lineage	sublineage
viba_719	IRN/88/2009		90.8	0	O	ME-SA	PanAsia-2	ANT-10
viba_766	IRN/31/2009	cattle	90.5	0	O	ME-SA	PanAsia-2	FAR-09
viba_505	TUR/264/2009		90.2	0	O	ME-SA	PanAsia-2	SAN-09
viba_650	IRN/8/2005	ovine	90.0	0	O	ME-SA	PanAsia-2	
viba_666	IRN/18/2010	cattle	89.9	0	O	ME-SA	PanAsia-2	BAL-09
viba_491	TUR/257/2008		89.9	0	O	ME-SA	PanAsia-2	TER-08
viba_354	PAK/16/2010	cattle	89.6	0	O	ME-SA	PanAsia-2	PUN-10
viba_705	KUW/3/97	bovine	89.6	0	O	ME-SA	Ind-2001	a
viba_860	IRN/6/2015	cattle	89.6	0	O	ME-SA	PanAsia-2	QOM-15
viba_541	OMN/7/2001	bovine	89.1	0	O	ME-SA	Ind-2001	b

Virus sample name:	IND/IC233/2018
Sender reference:	IC233/2018
Location of origin:	Erode, Tamil Nadu
Country of origin:	India
Date of collection:	20/11/2018
Host species:	cattle
Serotype:	O
Topotype:	ME-SA
Lineage:	SA-2018
Sublineage:	
Sequence length:	633
Ambiguities:	0
Material submitted for sequencing:	n/a
Harvest date of material:	n/a
Primers:	n/a
Received for sequencing:	n/a
Created:	29/12/2020
Last updated:	29/12/2020
VIBASys IDs: sample 47214, genome 47215, sequence viba_47216, sequencing info 47217	

Most Closely Related Sequences

sequence	virus name	Host	% Id.	# Ambig.	serotype	topotype	lineage	sublineage
viba_47212	IND/IC231/2018	cattle	100.0	0	O	ME-SA	SA-2018	
viba_47196	IND/IC207/2018	cattle	99.7	0	O	ME-SA	SA-2018	
viba_47208	IND/IC221/2018	cattle	99.2	0	O	ME-SA	SA-2018	
viba_47192	IND/IC202/2018	cattle	99.2	0	O	ME-SA	SA-2018	
viba_47204	IND/IC218/2018	cattle	99.2	0	O	ME-SA	SA-2018	
viba_47032	IND/PD57/2018	water buffalo	99.1	0	O	ME-SA	SA-2018	
viba_47016	IND/PD42/2018	cattle	99.1	0	O	ME-SA	SA-2018	
viba_47056	IND/PD325/2018	cattle	99.1	0	O	ME-SA	SA-2018	
viba_43912	SRL/16/2018	cattle	99.1	0	O	ME-SA	SA-2018	
viba_43916	SRL/17/2018	cattle	98.6	0	O	ME-SA	SA-2018	

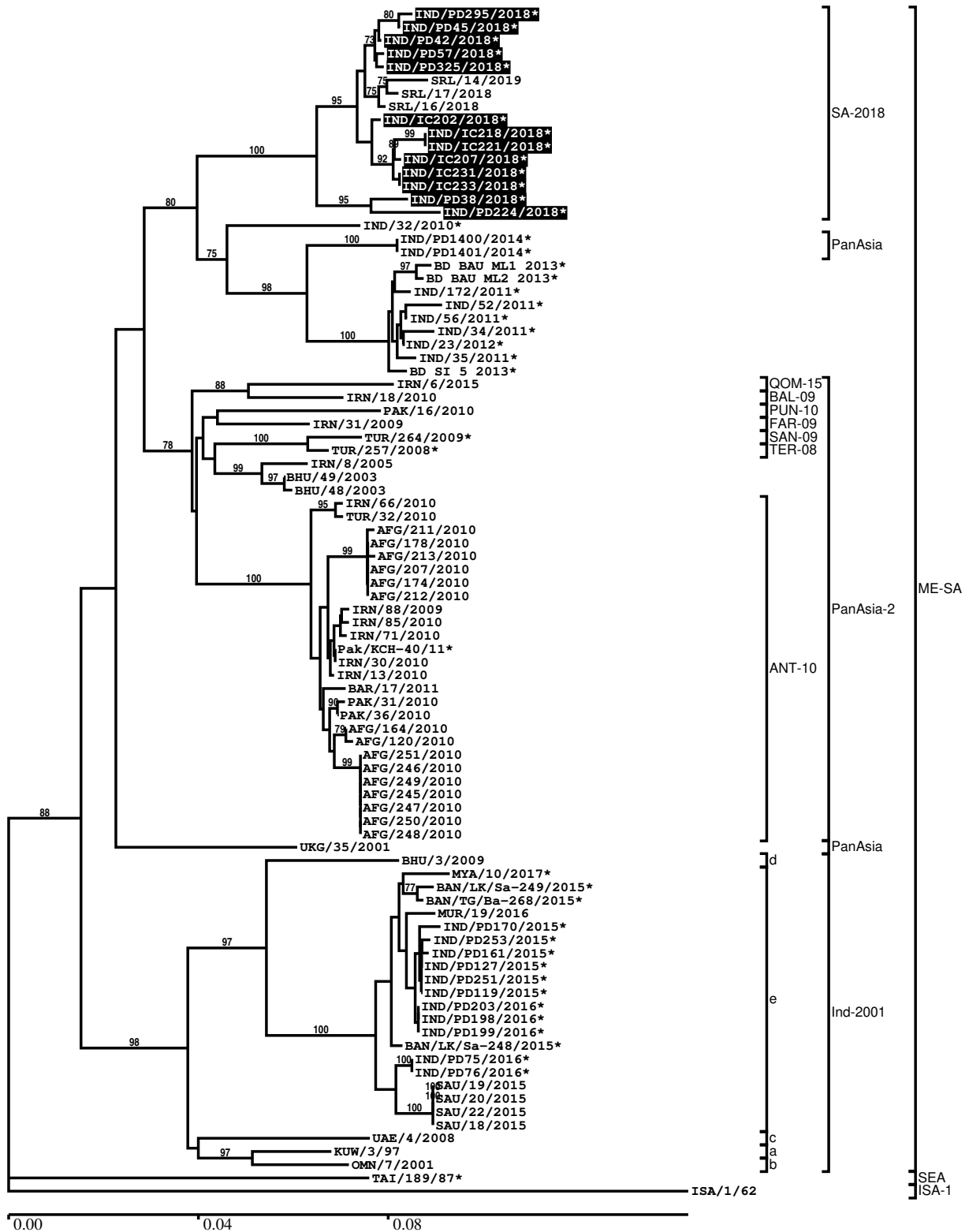
Most Closely Related Prototype Sequences

see <http://www.wrlfmd.org/fmdv-genome/fmd-prototype-strains>

sequence	virus name	Host	% Id.	# Ambig.	serotype	topotype	lineage	sublineage
viba_719	IRN/88/2009		90.8	0	O	ME-SA	PanAsia-2	ANT-10
viba_766	IRN/31/2009	cattle	90.5	0	O	ME-SA	PanAsia-2	FAR-09
viba_505	TUR/264/2009		90.2	0	O	ME-SA	PanAsia-2	SAN-09
viba_650	IRN/8/2005	ovine	90.0	0	O	ME-SA	PanAsia-2	
viba_666	IRN/18/2010	cattle	89.9	0	O	ME-SA	PanAsia-2	BAL-09
viba_491	TUR/257/2008		89.9	0	O	ME-SA	PanAsia-2	TER-08
viba_354	PAK/16/2010	cattle	89.6	0	O	ME-SA	PanAsia-2	PUN-10
viba_705	KUW/3/97	bovine	89.6	0	O	ME-SA	Ind-2001	a
viba_860	IRN/6/2015	cattle	89.6	0	O	ME-SA	PanAsia-2	QOM-15
viba_541	OMN/7/2001	bovine	89.1	0	O	ME-SA	Ind-2001	b

Report on FMDV O in India in 2018

Batch: WRLMEG/2020/00039A



*, not a WRLFMD Reference Number

Analysis Parameters

VP1 subsequence extractor: vp1_O
 Query sequence set: WRLMEG/2020/00039A-India-O (13 sequences)
 Sequence database set: allseqs_O (5115 sequences)
 Prototype sequence set: !prototypes_O (49 sequences)
 Number of related sequences reported: 10
 Minimal VP1 subsequence match length: 600
 Sequence alignment method: muscle (default parameters)
 Sequence alignment length: 636
 Phylogeny reconstruction method: fdnadist, fneighbor
 Number of bootstrap samples: 1000
 Random seed for bootstrapping: 1
 Displaying bootstrap values above: 70.0%
 Number of sequences in tree capped at: 100
 Number of prototype sequences in tree: 14
 VIBASys version: reflabs-1.1.2

Sequences in the Phylogenetic Tree

All sequences in the tree are in taxonomic group FMDV/O

label	accession	host(s)	lab	country	taxonomic information
IND/PD295/2018*	MT919004	cattle	PD-FMD	India	ME-SA/SA-2018
IND/PD45/2018*	MT918997	cattle	PD-FMD	India	ME-SA/SA-2018
IND/PD42/2018*	MT918995	cattle	PD-FMD	India	ME-SA/SA-2018
IND/PD57/2018*	MT918999	water buffalo	PD-FMD	India	ME-SA/SA-2018
IND/PD325/2018*	MT919005	cattle	PD-FMD	India	ME-SA/SA-2018
SRL/14/2019	n/a	cattle	WRLFMD	Sri Lanka	ME-SA/SA-2018
SRL/17/2018	n/a	cattle	WRLFMD	Sri Lanka	ME-SA/SA-2018
SRL/16/2018	n/a	cattle	WRLFMD	Sri Lanka	ME-SA/SA-2018
IND/IC202/2018*	MT936110	cattle	PD-FMD	India	ME-SA/SA-2018
IND/IC218/2018*	MT936113	cattle	PD-FMD	India	ME-SA/SA-2018
IND/IC221/2018*	MT936114	cattle	PD-FMD	India	ME-SA/SA-2018
IND/IC207/2018*	MT936111	cattle	PD-FMD	India	ME-SA/SA-2018
IND/IC231/2018*	MT936115	cattle	PD-FMD	India	ME-SA/SA-2018
IND/IC233/2018*	MT936116	cattle	PD-FMD	India	ME-SA/SA-2018
IND/PD38/2018*	MT918994	cattle	PD-FMD	India	ME-SA/SA-2018
IND/PD224/2018*	MT919002	cattle	PD-FMD	India	ME-SA/SA-2018
IND/32/2010*	KC506435	cattle	PD-FMD	India	ME-SA
IND/PD1400/2014*	MT909601	cattle	PD-FMD	India	ME-SA/PanAsia
IND/PD1401/2014*	MT909602	cattle	PD-FMD	India	ME-SA/PanAsia
BD BAU ML1 2013*	KT960948	cattle	Bangladesh	Bangladesh	ME-SA
BD BAU ML2 2013*	KT982203	cattle	Agri Univ Bangladesh	Bangladesh	ME-SA
IND/172/2011*	KC506438	cattle	PD-FMD	India	ME-SA
IND/52/2011*	KC506442	water buffalo	PD-FMD	India	ME-SA
IND/56/2011*	KC506443	cattle	PD-FMD	India	ME-SA
IND/34/2011*	KC506440	cattle	PD-FMD	India	ME-SA
IND/23/2012*	KC506439	cattle	PD-FMD	India	ME-SA
IND/35/2011*	KC506441	cattle	PD-FMD	India	ME-SA
BD SI 5 2013*	KT037118	cattle	Bangladesh	Bangladesh	ME-SA
IRN/6/2015	MN276044	cattle	Agri Univ WRLFMD	Iran	ME-SA/PanAsia-2/QOM-15
IRN/18/2010	KY091283	cattle	WRLFMD	Iran	ME-SA/PanAsia-2/BAL-09
PAK/16/2010	KY091285	cattle	WRLFMD	Pakistan	ME-SA/PanAsia-2/PUN-10
IRN/31/2009	KY091284	cattle	WRLFMD	Iran	ME-SA/PanAsia-2/FAR-09
TUR/264/2009*	n/a	n/a	FMDI-Ankara	Turkey	ME-SA/PanAsia-2/SAN-09

continued on next page

label	accession	host(s)	lab	country	taxonomic information
TUR/257/2008*	n/a	n/a	FMDI-Ankara	Turkey	ME-SA/PanAsia-2/TER-08
IRN/8/2005	KY091281	ovine	WRLFMD	Iran	ME-SA/PanAsia-2
BHU/49/2003	DQ164867	bovine	WRLFMD	Bhutan	ME-SA/PanAsia-2
BHU/48/2003	n/a	bovine	WRLFMD	Bhutan	ME-SA/PanAsia-2
IRN/66/2010	n/a	cattle	WRLFMD	Iran	ME-SA/PanAsia-2/ANT-10
TUR/32/2010	n/a	cattle	WRLFMD	Turkey	ME-SA/PanAsia-2/ANT-10
AFG/211/2010	n/a	cattle	WRLFMD	Afghanistan	ME-SA/PanAsia-2/ANT-10
AFG/178/2010	n/a	cattle	WRLFMD	Afghanistan	ME-SA/PanAsia-2/ANT-10
AFG/213/2010	n/a	cattle	WRLFMD	Afghanistan	ME-SA/PanAsia-2/ANT-10
AFG/207/2010	n/a	cattle	WRLFMD	Afghanistan	ME-SA/PanAsia-2/ANT-10
AFG/174/2010	n/a	cattle	WRLFMD	Afghanistan	ME-SA/PanAsia-2/ANT-10
AFG/212/2010	n/a	cattle	WRLFMD	Afghanistan	ME-SA/PanAsia-2/ANT-10
IRN/88/2009	KY091282	n/a	WRLFMD	Iran	ME-SA/PanAsia-2/ANT-10
IRN/85/2010	n/a	cattle	WRLFMD	Iran	ME-SA/PanAsia-2/ANT-10
IRN/71/2010	n/a	cattle	WRLFMD	Iran	ME-SA/PanAsia-2/ANT-10
Pak/KCH-40/11*	KU365845	water buffalo	PIADC	Pakistan	ME-SA/PanAsia-2/ANT-10
IRN/30/2010	n/a	cattle	WRLFMD	Iran	ME-SA/PanAsia-2/ANT-10
IRN/13/2010	n/a	n/a	WRLFMD	Iran	ME-SA/PanAsia-2/ANT-10
BAR/17/2011	n/a	cattle	WRLFMD	Bahrain	ME-SA/PanAsia-2/ANT-10
PAK/31/2010	n/a	water buffalo	WRLFMD	Pakistan	ME-SA/PanAsia-2/ANT-10
PAK/36/2010	n/a	cattle	WRLFMD	Pakistan	ME-SA/PanAsia-2/ANT-10
AFG/164/2010	n/a	cattle	WRLFMD	Afghanistan	ME-SA/PanAsia-2/ANT-10
AFG/120/2010	n/a	cattle	WRLFMD	Afghanistan	ME-SA/PanAsia-2/ANT-10
AFG/251/2010	n/a	cattle	WRLFMD	Afghanistan	ME-SA/PanAsia-2/ANT-10
AFG/246/2010	n/a	cattle	WRLFMD	Afghanistan	ME-SA/PanAsia-2/ANT-10
AFG/249/2010	n/a	cattle	WRLFMD	Afghanistan	ME-SA/PanAsia-2/ANT-10
AFG/245/2010	n/a	cattle	WRLFMD	Afghanistan	ME-SA/PanAsia-2/ANT-10
AFG/247/2010	n/a	cattle	WRLFMD	Afghanistan	ME-SA/PanAsia-2/ANT-10
AFG/250/2010	n/a	cattle	WRLFMD	Afghanistan	ME-SA/PanAsia-2/ANT-10
AFG/248/2010	n/a	cattle	WRLFMD	Afghanistan	ME-SA/PanAsia-2/ANT-10
UKG/35/2001	AJ539141	porcine	PIADC	United Kingdom	ME-SA/PanAsia
BHU/3/2009	KM921814	cattle	WRLFMD	Bhutan	ME-SA/Ind-2001/d
MYA/10/2017*	MG972524	cattle	TRRL	Myanmar	ME-SA/Ind-2001/e
BAN/LK/Sa-249/2015*	KY077613	cattle	Univ Dhaka	Bangladesh	ME-SA/Ind-2001/e
BAN/TG/Ba-268/2015*	KY077621	cattle	Univ Dhaka	Bangladesh	ME-SA/Ind-2001/e
MUR/19/2016	MG972510	cattle	WRLFMD	Mauritius	ME-SA/Ind-2001/e
IND/PD170/2015*	MT909639	cattle	PD-FMD	India	ME-SA/Ind-2001/e
IND/PD253/2015*	MT909653	cattle	PD-FMD	India	ME-SA/Ind-2001/e
IND/PD161/2015*	MT909637	cattle	PD-FMD	India	ME-SA/Ind-2001/e
IND/PD127/2015*	MT909627	cattle	PD-FMD	India	ME-SA/Ind-2001/e
IND/PD251/2015*	MT909652	cattle	PD-FMD	India	ME-SA/Ind-2001/e
IND/PD119/2015*	MT909624	cattle	PD-FMD	India	ME-SA/Ind-2001/e
IND/PD203/2016*	MT909674	cattle	PD-FMD	India	ME-SA/Ind-2001/e
IND/PD198/2016*	MT909672	cattle	PD-FMD	India	ME-SA/Ind-2001/e
IND/PD199/2016*	MT909673	cattle	PD-FMD	India	ME-SA/Ind-2001/e
BAN/LK/Sa-248/2015*	KY077612	cattle	Univ Dhaka	Bangladesh	ME-SA/Ind-2001/e
IND/PD75/2016*	MT909666	water buffalo	PD-FMD	India	ME-SA/Ind-2001/e
IND/PD76/2016*	MT909667	water buffalo	PD-FMD	India	ME-SA/Ind-2001/e
SAU/19/2015	MG972590	bovine	WRLFMD	Saudi Arabia	ME-SA/Ind-2001/e
SAU/20/2015	MG972591	bovine	WRLFMD	Saudi Arabia	ME-SA/Ind-2001/e
SAU/22/2015	MG972592	bovine	WRLFMD	Saudi Arabia	ME-SA/Ind-2001/e
SAU/18/2015	MG972589	bovine	WRLFMD	Saudi Arabia	ME-SA/Ind-2001/e
UAE/4/2008	KM921876	gazelle	WRLFMD	United Arab Emirates	ME-SA/Ind-2001/c
KUW/3/97	DQ164904	bovine	WRLFMD	Kuwait	ME-SA/Ind-2001/a
OMN/7/2001	DQ164941	bovine	WRLFMD	Oman	ME-SA/Ind-2001/b
TAI/189/87*	KY091288	bovine	TRRL	Thailand	SEA
ISA/1/62	AJ303500	n/a	WRLFMD	Indonesia	ISA-1

*, not a WRLFMD Reference Number

n/a, not available