

FAO World Reference Laboratory for Foot-and-Mouth Disease (WRLFMD)

Genotyping Report

FMDV serotype: A
Country: Nigeria
Year: 2015, 2017
Batch: WRLMEG/2020/00038
No. of sequences: 6
Report date: 16th December 2020
Report generated by: Nick Knowles
Report checked by: Jemma Wadsworth



Copyright © 2020 The Pirbright Institute, Ash Road, Pirbright, Woking GU24 0NF, United Kingdom.

www: <http://www.wrlfmd.org/>

email: reporting@pirbright.ac.uk

The contents of this report should not be reproduced without permission.

Virus sample name:	NIG/08/2015
Sender reference:	A/NIG/08/2015
Location of origin:	Toro, Bauchi state
Country of origin:	Nigeria
Date of collection:	11/09/2015
Host species:	cattle
Serotype:	A
Topotype:	AFRICA
Lineage:	G-IV
Sublineage:	
Sequence length:	633
Ambiguities:	0
Material submitted for sequencing:	n/a
Harvest date of material:	n/a
Primers:	n/a
Received for sequencing:	n/a
Created:	16/12/2020
Last updated:	16/12/2020
VIBASys IDs: sample 45922, genome 45923, sequence viba_45924, sequencing info 45925	

Most Closely Related Sequences

sequence	virus name	Host	% Id.	# Ambig.	serotype	topotype	lineage	sublineage
viba_32087	NIG/02/15	bovine	100.0	0	A	AFRICA	G-IV	
viba_32083	NIG/01/15	bovine	99.7	0	A	AFRICA	G-IV	
viba_45928	NIG/09/2015	cattle	99.7	0	A	AFRICA	G-IV	
viba_40920	NIG/3/15a	cattle	99.4	0	A	AFRICA	G-IV	
viba_32099	NIG/06/15	bovine	99.4	0	A	AFRICA	G-IV	
viba_40924	NIG/4/15a	cattle	99.4	0	A	AFRICA	G-IV	
viba_40916	NIG/2/15a	cattle	99.4	0	A	AFRICA	G-IV	
viba_32095	NIG/05/15	bovine	99.4	0	A	AFRICA	G-IV	
viba_32103	NIG/07/15	bovine	99.4	0	A	AFRICA	G-IV	
viba_40964	NIG/10/16a	cattle	99.2	0	A	AFRICA	G-IV	

Most Closely Related Prototype Sequences

see <http://www.wrlfmd.org/fmdv-genome/fmd-prototype-strains>

sequence	virus name	Host	% Id.	# Ambig.	serotype	topotype	lineage	sublineage
viba_178	SUD/3/77		84.4	0	A	AFRICA	G-IV	
viba_173	UGA/13/66	bovine	84.1	0	A	AFRICA	G-VII	
viba_347	KEN/42/66		83.6	0	A	AFRICA	G-I	
viba_609	GHA/16/73	bovine	82.3	0	A	AFRICA	G-VI	
viba_785	KEN/3/64		82.0	0	A	AFRICA	G-III	
viba_435	Allier/FRA/60		81.3	0	A	EURO-SA	A5	
viba_535	NGR/2/73	bovine	81.1	0	A	AFRICA	G-V	
viba_688	EGY/1/72	bovine	80.9	0	A	AFRICA	G-II	
viba_336	IRN/1/96	bovine	80.0	1	A	ASIA	Iran-96	
viba_589	Bangkok/TAI/60		79.5	0	A	ASIA	A15	

Virus sample name:	NIG/09/2015
Sender reference:	A/NIG/09/2015
Location of origin:	Toro, Bauchi state
Country of origin:	Nigeria
Date of collection:	11/09/2015
Host species:	cattle
Serotype:	A
Topotype:	AFRICA
Lineage:	G-IV
Sublineage:	
Sequence length:	633
Ambiguities:	0
Material submitted for sequencing:	n/a
Harvest date of material:	n/a
Primers:	n/a
Received for sequencing:	n/a
Created:	16/12/2020
Last updated:	16/12/2020
VIBASys IDs: sample 45926, genome 45927, sequence viba_45928, sequencing info 45929	

Most Closely Related Sequences

sequence	virus name	Host	% Id.	# Ambig.	serotype	topotype	lineage	sublineage
viba_32083	NIG/01/15	bovine	100.0	0	A	AFRICA	G-IV	
viba_45924	NIG/08/2015	cattle	99.7	0	A	AFRICA	G-IV	
viba_40920	NIG/3/15a	cattle	99.7	0	A	AFRICA	G-IV	
viba_32087	NIG/02/15	bovine	99.7	0	A	AFRICA	G-IV	
viba_32099	NIG/06/15	bovine	99.7	0	A	AFRICA	G-IV	
viba_40924	NIG/4/15a	cattle	99.7	0	A	AFRICA	G-IV	
viba_40916	NIG/2/15a	cattle	99.7	0	A	AFRICA	G-IV	
viba_32095	NIG/05/15	bovine	99.7	0	A	AFRICA	G-IV	
viba_32103	NIG/07/15	bovine	99.7	0	A	AFRICA	G-IV	
viba_40964	NIG/10/16a	cattle	99.5	0	A	AFRICA	G-IV	

Most Closely Related Prototype Sequences

see <http://www.wrlfmd.org/fmdv-genome/fmd-prototype-strains>

sequence	virus name	Host	% Id.	# Ambig.	serotype	topotype	lineage	sublineage
viba_178	SUD/3/77		84.3	0	A	AFRICA	G-IV	
viba_173	UGA/13/66	bovine	83.8	0	A	AFRICA	G-VII	
viba_347	KEN/42/66		83.4	0	A	AFRICA	G-I	
viba_785	KEN/3/64		81.9	0	A	AFRICA	G-III	
viba_609	GHA/16/73	bovine	81.8	0	A	AFRICA	G-VI	
viba_435	Allier/FRA/60		81.6	0	A	EURO-SA	A5	
viba_535	NGR/2/73	bovine	81.2	0	A	AFRICA	G-V	
viba_688	EGY/1/72	bovine	79.8	0	A	AFRICA	G-II	
viba_336	IRN/1/96	bovine	79.7	1	A	ASIA	Iran-96	
viba_625	TAI/2/97		79.3	0	A	ASIA	Sea-97	

Virus sample name:	NIG/01/2017
Sender reference:	A/NIG/01/2017
Location of origin:	Saki West, Oyo state
Country of origin:	Nigeria
Date of collection:	22/03/2017
Host species:	cattle
Serotype:	A
Topotype:	AFRICA
Lineage:	G-IV
Sublineage:	
Sequence length:	630
Ambiguities:	0
Material submitted for sequencing:	n/a
Harvest date of material:	n/a
Primers:	n/a
Received for sequencing:	n/a
Created:	16/12/2020
Last updated:	16/12/2020
VIBASys IDs: sample 45930, genome 45931, sequence viba_45932, sequencing info 45933	

Most Closely Related Sequences

sequence	virus name	Host	% Id.	# Ambig.	serotype	topotype	lineage	sublineage
viba_11922	NIG/3/2009	cattle	92.1	0	A	AFRICA	G-IV	
viba_31774	NIG/4/2009	cattle	91.3	0	A	AFRICA	G-IV	
viba_31762	NIG/1/2009	cattle	91.3	0	A	AFRICA	G-IV	
viba_31818	NIG/15/2009a	cattle	91.3	0	A	AFRICA	G-IV	
viba_31766	NIG/2/2009	cattle	91.3	0	A	AFRICA	G-IV	
viba_31830	NIG/18/2009	cattle	91.1	0	A	AFRICA	G-IV	
viba_31798	NIG/10/2009	cattle	91.1	0	A	AFRICA	G-IV	
viba_31838	NIG/20/2009	cattle	91.1	0	A	AFRICA	G-IV	
viba_31814	NIG/14/2009	cattle	91.1	0	A	AFRICA	G-IV	
viba_31770	NIG/3/2009a	cattle	91.1	0	A	AFRICA	G-IV	

Most Closely Related Prototype Sequences

see <http://www.wrlfmd.org/fmdv-genome/fmd-prototype-strains>

sequence	virus name	Host	% Id.	# Ambig.	serotype	topotype	lineage	sublineage
viba_178	SUD/3/77		85.4	0	A	AFRICA	G-IV	
viba_609	GHA/16/73	bovine	82.7	0	A	AFRICA	G-VI	
viba_173	UGA/13/66	bovine	81.9	0	A	AFRICA	G-VII	
viba_535	NGR/2/73	bovine	81.7	0	A	AFRICA	G-V	
viba_785	KEN/3/64		81.0	0	A	AFRICA	G-III	
viba_347	KEN/42/66		80.8	0	A	AFRICA	G-I	
viba_688	EGY/1/72	bovine	80.0	0	A	AFRICA	G-II	
viba_336	IRN/1/96	bovine	80.0	1	A	ASIA	Iran-96	
viba_589	Bangkok/TAI/60		79.7	0	A	ASIA	A15	
viba_864	IND/40/2000	cattle	78.9	0	A	ASIA	G-VII	

Virus sample name:	NIG/02/2017
Sender reference:	A/NIG/02/2017
Location of origin:	Makurdi, Benue state
Country of origin:	Nigeria
Date of collection:	29/05/2017
Host species:	cattle
Serotype:	A
Topotype:	AFRICA
Lineage:	G-IV
Sublineage:	
Sequence length:	633
Ambiguities:	0
Material submitted for sequencing:	n/a
Harvest date of material:	n/a
Primers:	n/a
Received for sequencing:	n/a
Created:	16/12/2020
Last updated:	16/12/2020
VIBASys IDs: sample 45934, genome 45935, sequence viba_45936, sequencing info 45937	

Most Closely Related Sequences

sequence	virus name	Host	% Id.	# Ambig.	serotype	topotype	lineage	sublineage
viba_45940	NIG/04/2017	cattle	98.7	0	A	AFRICA	G-IV	
viba_45944	NIG/05/2017	cattle	98.4	0	A	AFRICA	G-IV	
viba_40936	NIG/3/16a	cattle	95.4	0	A	AFRICA	G-IV	
viba_40940	NIG/4/16a	cattle	95.4	0	A	AFRICA	G-IV	
viba_40944	NIG/5/16a	cattle	95.4	0	A	AFRICA	G-IV	
viba_40960	NIG/9/16a	cattle	95.4	0	A	AFRICA	G-IV	
viba_40976	NIG/13/16a	cattle	95.4	0	A	AFRICA	G-IV	
viba_40948	NIG/6/16a	cattle	95.3	0	A	AFRICA	G-IV	
viba_17182	NIG/2/2011	bovine	94.2	0	A	AFRICA	G-IV	
viba_39617	CAR/LAN15/2014	cattle	94.0	0	A	AFRICA	G-IV	

Most Closely Related Prototype Sequences

see <http://www.wrlfmd.org/fmdv-genome/fmd-prototype-strains>

sequence	virus name	Host	% Id.	# Ambig.	serotype	topotype	lineage	sublineage
viba_178	SUD/3/77		86.4	0	A	AFRICA	G-IV	
viba_173	UGA/13/66	bovine	83.7	0	A	AFRICA	G-VII	
viba_347	KEN/42/66		83.3	0	A	AFRICA	G-I	
viba_609	GHA/16/73	bovine	82.9	0	A	AFRICA	G-VI	
viba_785	KEN/3/64		82.4	0	A	AFRICA	G-III	
viba_699	UKG/119/32		81.0	0	A	EURO-SA	A12	
viba_589	Bangkok/TAI/60		80.9	0	A	ASIA	A15	
viba_688	EGY/1/72	bovine	80.7	0	A	AFRICA	G-II	
viba_535	NGR/2/73	bovine	80.4	0	A	AFRICA	G-V	
viba_435	Allier/FRA/60		80.3	0	A	EURO-SA	A5	

Virus sample name:	NIG/04/2017
Sender reference:	A/NIG/04/2017
Location of origin:	Kaura, Kaduna state
Country of origin:	Nigeria
Date of collection:	04/07/2017
Host species:	cattle
Serotype:	A
Topotype:	AFRICA
Lineage:	G-IV
Sublineage:	
Sequence length:	633
Ambiguities:	0
Material submitted for sequencing:	n/a
Harvest date of material:	n/a
Primers:	n/a
Received for sequencing:	n/a
Created:	16/12/2020
Last updated:	16/12/2020
VIBASys IDs: sample 45938, genome 45939, sequence viba_45940, sequencing info 45941	

Most Closely Related Sequences

sequence	virus name	Host	% Id.	# Ambig.	serotype	topotype	lineage	sublineage
viba_45944	NIG/05/2017	cattle	99.1	0	A	AFRICA	G-IV	
viba_45936	NIG/02/2017	cattle	98.7	0	A	AFRICA	G-IV	
viba_40936	NIG/3/16a	cattle	95.7	0	A	AFRICA	G-IV	
viba_40940	NIG/4/16a	cattle	95.7	0	A	AFRICA	G-IV	
viba_40944	NIG/5/16a	cattle	95.7	0	A	AFRICA	G-IV	
viba_40960	NIG/9/16a	cattle	95.7	0	A	AFRICA	G-IV	
viba_40976	NIG/13/16a	cattle	95.7	0	A	AFRICA	G-IV	
viba_40948	NIG/6/16a	cattle	95.6	0	A	AFRICA	G-IV	
viba_39617	CAR/LAN15/2014	cattle	94.6	0	A	AFRICA	G-IV	
viba_39609	CAR/LAN11/2014	cattle	94.6	0	A	AFRICA	G-IV	

Most Closely Related Prototype Sequences

see <http://www.wrlfmd.org/fmdv-genome/fmd-prototype-strains>

sequence	virus name	Host	% Id.	# Ambig.	serotype	topotype	lineage	sublineage
viba_178	SUD/3/77		86.3	0	A	AFRICA	G-IV	
viba_173	UGA/13/66	bovine	84.4	0	A	AFRICA	G-VII	
viba_347	KEN/42/66		83.7	0	A	AFRICA	G-I	
viba_609	GHA/16/73	bovine	82.8	0	A	AFRICA	G-VI	
viba_785	KEN/3/64		82.1	0	A	AFRICA	G-III	
viba_699	UKG/119/32		81.2	0	A	EURO-SA	A12	
viba_589	Bangkok/TAI/60		80.9	0	A	ASIA	A15	
viba_688	EGY/1/72	bovine	80.8	0	A	AFRICA	G-II	
viba_435	Allier/FRA/60		80.3	0	A	EURO-SA	A5	
viba_217	Cruzeiro/BRA/55	bovine	79.7	0	A	EURO-SA	A24	

Virus sample name:	NIG/05/2017
Sender reference:	A/NIG/05/2017
Location of origin:	Kaduna, Kaduna state
Country of origin:	Nigeria
Date of collection:	21/09/2017
Host species:	cattle
Serotype:	A
Topotype:	AFRICA
Lineage:	G-IV
Sublineage:	
Sequence length:	633
Ambiguities:	0
Material submitted for sequencing:	n/a
Harvest date of material:	n/a
Primers:	n/a
Received for sequencing:	n/a
Created:	16/12/2020
Last updated:	16/12/2020
VIBASys IDs: sample 45942, genome 45943, sequence viba_45944, sequencing info 45945	

Most Closely Related Sequences

sequence	virus name	Host	% Id.	# Ambig.	serotype	topotype	lineage	sublineage
viba_45940	NIG/04/2017	cattle	99.1	0	A	AFRICA	G-IV	
viba_45936	NIG/02/2017	cattle	98.4	0	A	AFRICA	G-IV	
viba_40936	NIG/3/16a	cattle	95.7	0	A	AFRICA	G-IV	
viba_40940	NIG/4/16a	cattle	95.7	0	A	AFRICA	G-IV	
viba_40944	NIG/5/16a	cattle	95.7	0	A	AFRICA	G-IV	
viba_40960	NIG/9/16a	cattle	95.7	0	A	AFRICA	G-IV	
viba_40976	NIG/13/16a	cattle	95.7	0	A	AFRICA	G-IV	
viba_40948	NIG/6/16a	cattle	95.6	0	A	AFRICA	G-IV	
viba_39617	CAR/LAN15/2014	cattle	94.6	0	A	AFRICA	G-IV	
viba_39609	CAR/LAN11/2014	cattle	94.6	0	A	AFRICA	G-IV	

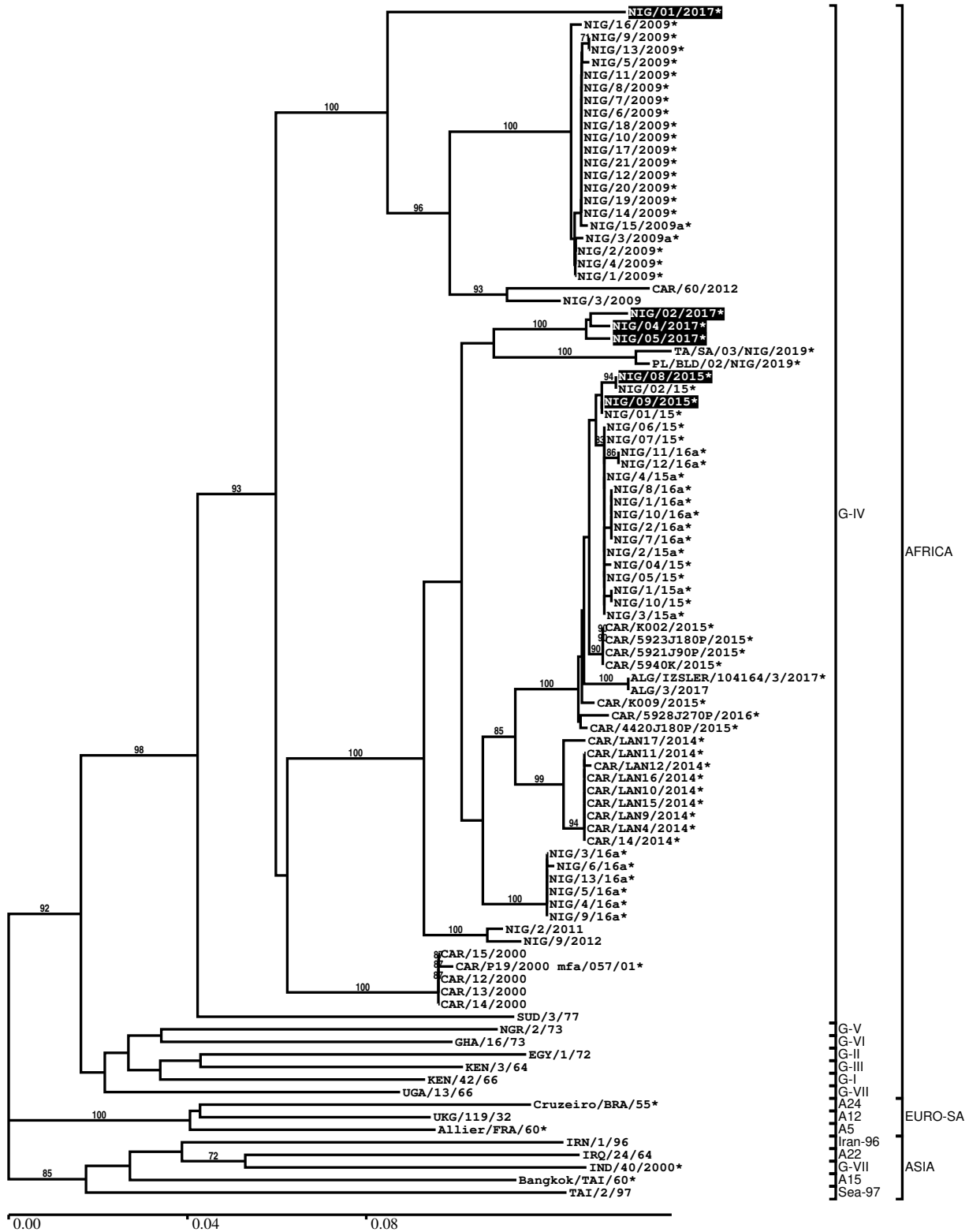
Most Closely Related Prototype Sequences

see <http://www.wrlfmd.org/fmdv-genome/fmd-prototype-strains>

sequence	virus name	Host	% Id.	# Ambig.	serotype	topotype	lineage	sublineage
viba_178	SUD/3/77		85.9	0	A	AFRICA	G-IV	
viba_173	UGA/13/66	bovine	84.0	0	A	AFRICA	G-VII	
viba_347	KEN/42/66		83.4	0	A	AFRICA	G-I	
viba_609	GHA/16/73	bovine	82.8	0	A	AFRICA	G-VI	
viba_785	KEN/3/64		82.1	0	A	AFRICA	G-III	
viba_699	UKG/119/32		81.2	0	A	EURO-SA	A12	
viba_589	Bangkok/TAI/60		80.9	0	A	ASIA	A15	
viba_435	Allier/FRA/60		80.3	0	A	EURO-SA	A5	
viba_688	EGY/1/72	bovine	80.2	0	A	AFRICA	G-II	
viba_625	TAI/2/97		79.6	0	A	ASIA	Sea-97	

Report on FMDV A in Nigeria in 2015, 2017

Batch: WRLMEG/2020/00038



*, not a WRLFMD Reference Number

Analysis Parameters

VP1 subsequence extractor: vp1_A
 Query sequence set: WRLMEG/2020/00038-Nigeria-A (6 sequences)
 Sequence database set: allseqs_A (2221 sequences)
 Prototype sequence set: !prototypes_A (40 sequences)
 Number of related sequences reported: 10
 Minimal VP1 subsequence match length: 600
 Sequence alignment method: muscle (default parameters)
 Sequence alignment length: 630
 Phylogeny reconstruction method: fdnadist, fneighbor
 Number of bootstrap samples: 1000
 Random seed for bootstrapping: 1
 Displaying bootstrap values above: 70.0%
 Number of sequences in tree capped at: 100
 Number of prototype sequences in tree: 14
 VIBASys version: reflabs-1.1.2

Sequences in the Phylogenetic Tree

All sequences in the tree are in taxonomic group FMDV/A

label	accession	host(s)	lab	country	taxonomic information
NIG/01/2017*	MT211641	cattle	Sciensano	Nigeria	AFRICA/G-IV
NIG/16/2009*	JN680724	cattle	PIADC	Nigeria	AFRICA/G-IV
NIG/9/2009*	JN680717	cattle	PIADC	Nigeria	AFRICA/G-IV
NIG/13/2009*	JN680721	cattle	PIADC	Nigeria	AFRICA/G-IV
NIG/5/2009*	JN680713	cattle	PIADC	Nigeria	AFRICA/G-IV
NIG/11/2009*	JN680719	cattle	PIADC	Nigeria	AFRICA/G-IV
NIG/8/2009*	JN680716	cattle	PIADC	Nigeria	AFRICA/G-IV
NIG/7/2009*	JN680715	cattle	PIADC	Nigeria	AFRICA/G-IV
NIG/6/2009*	JN680714	cattle	PIADC	Nigeria	AFRICA/G-IV
NIG/18/2009*	JN680726	cattle	PIADC	Nigeria	AFRICA/G-IV
NIG/10/2009*	JN680718	cattle	PIADC	Nigeria	AFRICA/G-IV
NIG/17/2009*	JN680725	cattle	PIADC	Nigeria	AFRICA/G-IV
NIG/21/2009*	JN680729	cattle	PIADC	Nigeria	AFRICA/G-IV
NIG/12/2009*	JN680720	cattle	PIADC	Nigeria	AFRICA/G-IV
NIG/20/2009*	JN680728	cattle	PIADC	Nigeria	AFRICA/G-IV
NIG/19/2009*	JN680727	cattle	PIADC	Nigeria	AFRICA/G-IV
NIG/14/2009*	JN680722	cattle	PIADC	Nigeria	AFRICA/G-IV
NIG/15/2009a*	JN680723	cattle	PIADC	Nigeria	AFRICA/G-IV
NIG/3/2009a*	JN680711	cattle	PIADC	Nigeria	AFRICA/G-IV
NIG/2/2009*	JN680710	cattle	PIADC	Nigeria	AFRICA/G-IV
NIG/4/2009*	JN680712	cattle	PIADC	Nigeria	AFRICA/G-IV
NIG/1/2009*	JN680709	cattle	PIADC	Nigeria	AFRICA/G-IV
CAR/60/2012	KX266278	bovine	WRLFMD	Cameroon	AFRICA/G-IV
NIG/3/2009	KX258049	cattle	WRLFMD	Nigeria	AFRICA/G-IV
NIG/02/2017*	MT220002	cattle	Sciensano	Nigeria	AFRICA/G-IV
NIG/04/2017*	MT228048	cattle	Sciensano	Nigeria	AFRICA/G-IV
NIG/05/2017*	MT228049	cattle	Sciensano	Nigeria	AFRICA/G-IV
TA/SA/03/NIG/2019*	n/a	bovine	NCFAD/NVRI	Nigeria	AFRICA/G-IV
PL/BLD/02/NIG/2019*	n/a	bovine	NCFAD/NVRI	Nigeria	AFRICA/G-IV
NIG/08/2015*	MG712579	cattle	Sciensano	Nigeria	AFRICA/G-IV
NIG/02/15*	KY655492	bovine	CODA-CERVA	Nigeria	AFRICA/G-IV
NIG/09/2015*	MT211640	cattle	Sciensano	Nigeria	AFRICA/G-IV
NIG/01/15*	KY655491	bovine	CODA-CERVA	Nigeria	AFRICA/G-IV
NIG/06/15*	KY655489	bovine	CODA-CERVA	Nigeria	AFRICA/G-IV
NIG/07/15*	KY655490	bovine	CODA-CERVA	Nigeria	AFRICA/G-IV
NIG/11/16a*	MH894415	cattle	PIADC	Nigeria	AFRICA/G-IV

continued on next page

label	accession	host(s)	lab	country	taxonomic information
NIG/12/16a*	MH894416	cattle	PIADC	Nigeria	AFRICA/G-IV
NIG/4/15a*	MH894404	cattle	PIADC	Nigeria	AFRICA/G-IV
NIG/8/16a*	MH894412	cattle	PIADC	Nigeria	AFRICA/G-IV
NIG/1/16a*	MH894405	cattle	PIADC	Nigeria	AFRICA/G-IV
NIG/10/16a*	MH894414	cattle	PIADC	Nigeria	AFRICA/G-IV
NIG/2/16a*	MH894406	cattle	PIADC	Nigeria	AFRICA/G-IV
NIG/7/16a*	MH894411	cattle	PIADC	Nigeria	AFRICA/G-IV
NIG/2/15a*	MH894402	cattle	PIADC	Nigeria	AFRICA/G-IV
NIG/04/15*	KY655487	bovine	CODA-CERVA	Nigeria	AFRICA/G-IV
NIG/05/15*	KY655488	bovine	CODA-CERVA	Nigeria	AFRICA/G-IV
NIG/1/15a*	MH894401	cattle	PIADC	Nigeria	AFRICA/G-IV
NIG/10/15*	KY655486	bovine	CODA-CERVA	Nigeria	AFRICA/G-IV
NIG/3/15a*	MH894403	cattle	PIADC	Nigeria	AFRICA/G-IV
CAR/K002/2015*	MG873206	cattle	PIADC	Cameroon	AFRICA/G-IV
CAR/5923J180P/2015*	MG873200	cattle	PIADC	Cameroon	AFRICA/G-IV
CAR/5921J90P/2015*	MG873199	cattle	PIADC	Cameroon	AFRICA/G-IV
CAR/5940K/2015*	MG873202	cattle	PIADC	Cameroon	AFRICA/G-IV
ALG/IZSLER/104164/3/2017*	n/a	cattle	IZSLER	Algeria	AFRICA/G-IV
ALG/3/2017	n/a	cattle	WRLFMD	Algeria	AFRICA/G-IV
CAR/K009/2015*	MG873207	cattle	PIADC	Cameroon	AFRICA/G-IV
CAR/5928J270P/2016*	MG873201	cattle	PIADC	Cameroon	AFRICA/G-IV
CAR/4420J180P/2015*	MG873198	cattle	PIADC	Cameroon	AFRICA/G-IV
CAR/LAN17/2014*	MH383076	cattle	PIADC	Cameroon	AFRICA/G-IV
CAR/LAN11/2014*	MH383072	cattle	PIADC	Cameroon	AFRICA/G-IV
CAR/LAN12/2014*	MH383073	cattle	PIADC	Cameroon	AFRICA/G-IV
CAR/LAN16/2014*	MH383075	cattle	PIADC	Cameroon	AFRICA/G-IV
CAR/LAN10/2014*	MH383071	cattle	PIADC	Cameroon	AFRICA/G-IV
CAR/LAN15/2014*	MH383074	cattle	PIADC	Cameroon	AFRICA/G-IV
CAR/LAN9/2014*	MH383070	cattle	PIADC	Cameroon	AFRICA/G-IV
CAR/LAN4/2014*	MH383069	cattle	PIADC	Cameroon	AFRICA/G-IV
CAR/14/2014*	KY581683	cattle	PIADC	Cameroon	AFRICA/G-IV
NIG/3/16a*	MH894407	cattle	PIADC	Nigeria	AFRICA/G-IV
NIG/6/16a*	MH894410	cattle	PIADC	Nigeria	AFRICA/G-IV
NIG/13/16a*	MH894417	cattle	PIADC	Nigeria	AFRICA/G-IV
NIG/5/16a*	MH894409	cattle	PIADC	Nigeria	AFRICA/G-IV
NIG/4/16a*	MH894408	cattle	PIADC	Nigeria	AFRICA/G-IV
NIG/9/16a*	MH894413	cattle	PIADC	Nigeria	AFRICA/G-IV
NIG/2/2011	KX258053	bovine	WRLFMD	Nigeria	AFRICA/G-IV
NIG/9/2012	KX258055	bovine	WRLFMD	Nigeria	AFRICA/G-IV
CAR/15/2000	EF208755	n/a	WRLFMD	Cameroon	AFRICA/G-IV
CAR/P19/2000 mfa/057/01*	n/a	n/a	WRLFMD	Cameroon	AFRICA/G-IV
CAR/12/2000	KX258130	n/a	WRLFMD	Cameroon	AFRICA/G-IV
CAR/13/2000	KX258131	n/a	WRLFMD	Cameroon	AFRICA/G-IV
CAR/14/2000	KX258132	n/a	WRLFMD	Cameroon	AFRICA/G-IV
SUD/3/77	GU566064	n/a	WRLFMD	Sudan	AFRICA/G-IV
NGR/2/73	KF561704	bovine	WRLFMD	Niger	AFRICA/G-V
GHA/16/73	KF561698	bovine	WRLFMD	Ghana	AFRICA/G-VI
EGY/1/72	EF208756	bovine	WRLFMD	Egypt	AFRICA/G-II
KEN/3/64	AY593761	n/a	PIADC	Kenya	AFRICA/G-III
KEN/42/66	KF561699	n/a	WRLFMD	Kenya	AFRICA/G-I
UGA/13/66	KF561705	bovine	WRLFMD	Uganda	AFRICA/G-VII
Cruzeiro/BRA/55*	AY593768	bovine	PIADC	Brazil	EURO-SA/A24
UKG/119/32	M10975	n/a	PIADC	United Kingdom	EURO-SA/A12
Allier/FRA/60*	AY593780	n/a	PIADC	France	EURO-SA/A5
IRN/1/96	EF208771	bovine	WRLFMD	Iran	ASIA/Iran-96
IRQ/24/64	AY593763	bovine	PIADC	Iraq	ASIA/A22
IND/40/2000*	AF390646	cattle	PD-FMD	India	ASIA/G-VII
Bangkok/TAI/60*	AY593755	n/a	PIADC	Thailand	ASIA/A15
TAI/2/97	EF208778	n/a	WRLFMD	Thailand	ASIA/Sea-97

*, not a WRLFMD Reference Number
n/a, not available