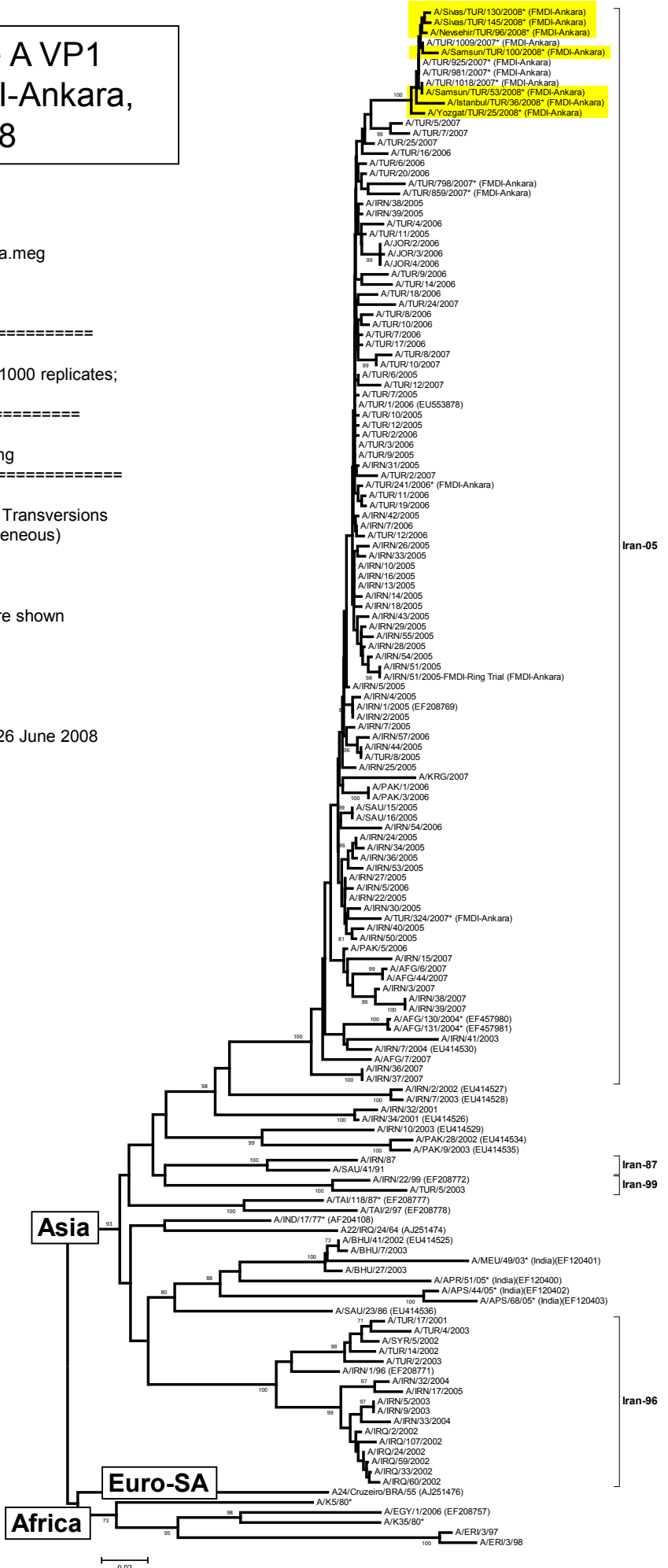


Report on FMDV type A VP1 sequences from FMDI-Ankara, received 26 June 2008

No. of Taxa : 153
 Data File : n:\levd\meg\db\fmdv\la\tur2008a.meg
 Data Title : Turkey (FMDI-Ankara)
 Data Type : Nucleotide (Coding)
 Analysis : Phylogeny reconstruction
 Tree Inference : =====
 ->Method : Neighbor-Joining
 ->Phylogeny Test and options : Bootstrap (1000 replicates; seed=69104)
 Include Sites : =====
 ->Gaps/Missing Data : Pairwise Deletion
 ->Codon Positions : 1st+2nd+3rd+Noncoding
 Substitution Model : =====
 ->Model : Nucleotide: Kimura 2-parameter
 ->Substitutions to Include : d: Transitions + Transversions
 ->Pattern among Lineages : Same (Homogeneous)
 ->Rates among sites : Uniform rates
 No. of Sites : 645
 No Of Bootstrap Reps = 1000
 Only bootstrap values of 70% and above are shown

*, not a WRLFMD Reference Number

N.J. Knowles, J. Wadsworth and K. Ebert, 26 June 2008



Report on FMDV type A VP1 sequences from FMDI-Ankara, received 26 June 2008 (only the Iran-05 lineage is shown)

No. of Taxa : 153
 Data File : n:\evd\meg\db\fmv\la\tUR2008a.meg
 Data Title : Turkey (FMDI-Ankara)
 Data Type : Nucleotide (Coding)
 Analysis : Phylogeny reconstruction
 Tree Inference : =====
 ->Method : Neighbor-Joining
 ->Phylogeny Test and options : Bootstrap (1000 replicates; seed=69104)
 Include Sites : =====
 ->Gaps/Missing Data : Pairwise Deletion
 ->Codon Positions : 1st+2nd+3rd+Noncoding
 Substitution Model : =====
 ->Model : Nucleotide: Kimura 2-parameter
 ->Substitutions to Include : d: Transitions + Transversions
 ->Pattern among Lineages : Same (Homogeneous)
 ->Rates among sites : Uniform rates
 No. of Sites : 645
 No Of Bootstrap Reps = 1000
 Only bootstrap values of 70% and above are shown

*, not a WRLFMD Reference Number

N.J. Knowles, J. Wadsworth and K. Ebert, 26 June 2008

