

Serotype: O Report date: 13/07/2005  
WRL Ref No: Amursk/Russia/2004  
Date collected: 2004  
Date received by WRLFMD: 19/10/2004  
Species: not known Topotype: ME-SA  
Material used: Epithelium Genotype/strain: PanAsia  
Region sequenced: VP1 Sequence filename: RUS04--A.SEQ  
RT-PCR primers: not known Date sequence last updated: 19/10/2004  
No. of Nt determined: 639 Total no. of comparisons: 1702  
No. of ambiguities: 0 Min. no. of nt for comparison: 300  
Gene length: 639

Comments: VP1 sequence received from Alexei Sherbakov, ARRIAH, 19/10/2004

### Ten Most Closely Related Viruses

Pos.	Virus name	Filename	No. nt compared	No. nt matched	No. of ambiguities	% Identity	% Difference
1	O/SAR/1/2000	SAR00-01	639	611	0	95.62	4.38
2	O/Tibet/CHA/3/99	CHA99-03	639	611	0	95.62	4.38
3	O/BAR/8/98	BAR98-08	639	610	0	95.46	4.54
4	O/Tibet/CHA/2/99	CHA99-02	639	610	0	95.46	4.54
5	O/TAI/9/99	TAI99-09	637	608	2	95.45	4.55
6	O/UKG/241/2001	UKG01241	633	604	6	95.42	4.58
7	O/UKG/4081/2001	UKG01-AE	630	601	9	95.4	4.6
8	O/SAR/11/2000 (OVI)	SAR00--A	495	472	0	95.35	4.65
9	O/UKG/6/2001	UKG01-06	639	609	0	95.31	4.69
10	O/UKG/12/2001	UKG01A12	639	609	0	95.31	4.69

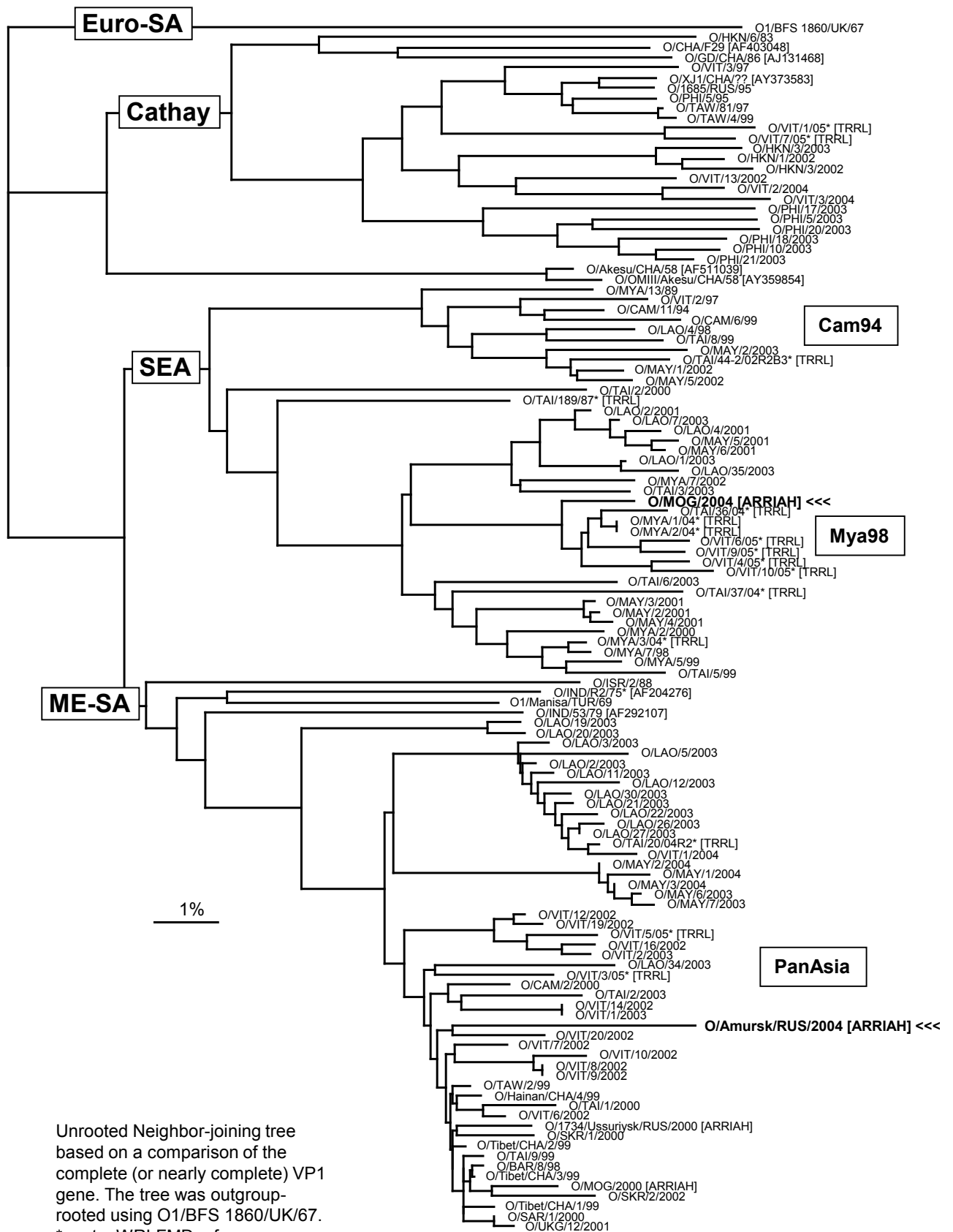
### Relationships to Reference Virus Strains

Pos.	Virus name	Filename	No. nt compared	No. nt matched	No. of ambiguities	% Identity	% Difference
1	O/TAW/2/99	TAW99-02	639	609	0	95.31	4.69
2	O/IND/53/79 [AF292107]	IND79A53	639	569	0	89.05	10.95
3	O1/Manisa/TUR/69	TUR69--E	639	568	0	88.89	11.11
4	O/MOR/1/91	MOR91-01	639	562	0	87.95	12.05
5	O/ISR/2/88	ISR88-02	639	561	0	87.79	12.21
6	O/IND/R2/75* [AF204276]	IND75--A	639	559	0	87.48	12.52
7	O/TAI/189/87* [TRRL]	TAI87-AC	639	558	0	87.32	12.68
8	O/PHI/5/95	PHI95-05	639	514	0	80.44	19.56
9	O1/BFS 1860/UK/67	UKG67--A	639	508	0	79.5	20.5
10	O/HKN/6/83	HKN83-06	637	506	2	79.43	20.57

nt, nucleotides

\*, not a WRLFMD reference number

Report on: FMDV O/Amursk/Russia 2004 & O/Mongolia/2004



Unrooted Neighbor-joining tree based on a comparison of the complete (or nearly complete) VP1 gene. The tree was outgroup-rooted using O1/BFS 1860/UK/67. \*, not a WRLFMD ref. no.