

# FAO World Reference Laboratory for Foot-and-Mouth Disease (WRLFMD)

## Genotyping Report

FMDV serotype: A  
Country: Thailand  
Year: 2021  
Batch: WRLFMD/2022/000016  
No. of sequences: 5  
Report date: 26th July 2022  
Report generated by: ██████████  
Report checked by: ██████████



Copyright © 2022 The Pirbright Institute, Ash Road, Pirbright, Woking GU24 0NF, United Kingdom.

www: <http://www.wrlfmd.org/>

email: [reporting@pirbright.ac.uk](mailto:reporting@pirbright.ac.uk)

The contents of this report should not be reproduced without permission.

Virus sample name:	TAI/3/2021
Sender reference:	27/21R3B1
Location of origin:	On Tai, San Kamphaeng, Chiang Mai
Country of origin:	Thailand
Date of collection:	06/09/2021
Host species:	cattle
Serotype:	A
Topotype:	ASIA
Lineage:	Sea-97
Sublineage:	
Sequence length:	630
Ambiguities:	0
Material submitted for sequencing:	WRL-LFBK1
Harvest date of material:	06/07/2022
Primers:	A-1C562F/EUR-2B52R; FMD-3161F/FMD-4303R
Received for sequencing:	21/07/2022
Created:	26/07/2022
Last updated:	26/07/2022

VIBASys IDs: sample 51094, genome 51095, sequence viba\_51096, sequencing info 51097

#### Most Closely Related Sequences

sequence	virus name	Host	% Id.	# Ambig.	serotype	topotype	lineage	sublineage
viba_50786	TAI/28/21	bovine	100.0	0	A	ASIA	Sea-97	
viba_50782	TAI/20/21	bovine	100.0	0	A	ASIA	Sea-97	
viba_51112	TAI/7/2021	cattle	99.8	0	A	ASIA	Sea-97	
viba_51104	TAI/5/2021	cattle	99.7	0	A	ASIA	Sea-97	
viba_50822	TAI/64/21	bovine	99.7	0	A	ASIA	Sea-97	
viba_50794	TAI/32/21	bovine	99.7	0	A	ASIA	Sea-97	
viba_50826	TAI/79/21	bovine	99.7	0	A	ASIA	Sea-97	
viba_50790	TAI/29/21	bovine	99.7	0	A	ASIA	Sea-97	
viba_50802	TAI/40/21	bovine	99.7	0	A	ASIA	Sea-97	
viba_50806	TAI/50/21	bovine	99.7	0	A	ASIA	Sea-97	

#### Most Closely Related Prototype Sequences

see <http://www.wrlfmd.org/fmdv-genome/fmd-prototype-strains>

sequence	virus name	Host	% Id.	# Ambig.	serotype	topotype	lineage	sublineage
viba_122	TAI/7/2003	bovine	90.5	0	A	ASIA	Sea-97	
viba_625	TAI/2/97		88.3	0	A	ASIA	Sea-97	
viba_630	TAI/118/87		86.2	0	A	ASIA	Thai-87	
viba_677	IRQ/24/64	bovine	81.8	0	A	ASIA	A22	
viba_336	IRN/1/96	bovine	80.7	1	A	ASIA	Iran-96	
viba_864	IND/40/2000	cattle	80.6	0	A	ASIA	G-VII	
viba_682	IRN/2/87	bovine	80.6	0	A	ASIA	Iran-87	
viba_843	SAU/16/95		80.0	0	A	ASIA	G-VII	
viba_173	UGA/13/66	bovine	80.0	0	A	AFRICA	G-VII	
viba_594	IRN/1/2011	bovine	79.9	0	A	ASIA	Iran-05	FAR-11

Virus sample name:	TAI/4/2021
Sender reference:	19-1/21R3B1
Location of origin:	Huai Yab, Banthi, Lamphun
Country of origin:	Thailand
Date of collection:	08/10/2021
Host species:	cattle
Serotype:	A
Topotype:	ASIA
Lineage:	Sea-97
Sublineage:	
Sequence length:	630
Ambiguities:	0
Material submitted for sequencing:	WRL-LFBK1
Harvest date of material:	06/07/2022
Primers:	A-1C562F/EUR-2B52R; FMD-3161F/FMD-4303R
Received for sequencing:	21/07/2022
Created:	26/07/2022
Last updated:	26/07/2022

VIBASys IDs: sample 51098, genome 51099, sequence viba\_51100, sequencing info 51101

#### Most Closely Related Sequences

sequence	virus name	Host	% Id.	# Ambig.	serotype	topotype	lineage	sublineage
viba_51112	TAI/7/2021	cattle	99.7	0	A	ASIA	Sea-97	
viba_51104	TAI/5/2021	cattle	99.5	0	A	ASIA	Sea-97	
viba_51096	TAI/3/2021	cattle	99.5	0	A	ASIA	Sea-97	
viba_50822	TAI/64/21	bovine	99.5	0	A	ASIA	Sea-97	
viba_50794	TAI/32/21	bovine	99.5	0	A	ASIA	Sea-97	
viba_50826	TAI/79/21	bovine	99.5	0	A	ASIA	Sea-97	
viba_50790	TAI/29/21	bovine	99.5	0	A	ASIA	Sea-97	
viba_50802	TAI/40/21	bovine	99.5	0	A	ASIA	Sea-97	
viba_50786	TAI/28/21	bovine	99.5	0	A	ASIA	Sea-97	
viba_50806	TAI/50/21	bovine	99.5	0	A	ASIA	Sea-97	

#### Most Closely Related Prototype Sequences

see <http://www.wrlfmd.org/fmdv-genome/fmd-prototype-strains>

sequence	virus name	Host	% Id.	# Ambig.	serotype	topotype	lineage	sublineage
viba_122	TAI/7/2003	bovine	90.5	0	A	ASIA	Sea-97	
viba_625	TAI/2/97		88.3	0	A	ASIA	Sea-97	
viba_630	TAI/118/87		85.9	0	A	ASIA	Thai-87	
viba_677	IRQ/24/64	bovine	81.7	0	A	ASIA	A22	
viba_682	IRN/2/87	bovine	80.6	0	A	ASIA	Iran-87	
viba_864	IND/40/2000	cattle	80.5	0	A	ASIA	G-VII	
viba_336	IRN/1/96	bovine	80.3	1	A	ASIA	Iran-96	
viba_173	UGA/13/66	bovine	80.0	0	A	AFRICA	G-VII	
viba_843	SAU/16/95		79.9	0	A	ASIA	G-VII	
viba_594	IRN/1/2011	bovine	79.6	0	A	ASIA	Iran-05	FAR-11

Virus sample name:	TAI/5/2021
Sender reference:	20/21R3B1
Location of origin:	On Tai, San Kamphaeng, Chiang Mai
Country of origin:	Thailand
Date of collection:	08/10/2021
Host species:	cattle
Serotype:	A
Topotype:	ASIA
Lineage:	Sea-97
Sublineage:	
Sequence length:	630
Ambiguities:	0
Material submitted for sequencing:	WRL-LFBK1
Harvest date of material:	06/07/2022
Primers:	A-1C562F/EUR-2B52R; FMD-3161F/FMD-4303R
Received for sequencing:	21/07/2022
Created:	26/07/2022
Last updated:	26/07/2022

VIBASys IDs: sample 51102, genome 51103, sequence viba\_51104, sequencing info 51105

#### Most Closely Related Sequences

sequence	virus name	Host	% Id.	# Ambig.	serotype	topotype	lineage	sublineage
viba_51112	TAI/7/2021	cattle	99.8	0	A	ASIA	Sea-97	
viba_51096	TAI/3/2021	cattle	99.7	0	A	ASIA	Sea-97	
viba_50822	TAI/64/21	bovine	99.7	0	A	ASIA	Sea-97	
viba_50794	TAI/32/21	bovine	99.7	0	A	ASIA	Sea-97	
viba_50826	TAI/79/21	bovine	99.7	0	A	ASIA	Sea-97	
viba_50790	TAI/29/21	bovine	99.7	0	A	ASIA	Sea-97	
viba_50802	TAI/40/21	bovine	99.7	0	A	ASIA	Sea-97	
viba_50786	TAI/28/21	bovine	99.7	0	A	ASIA	Sea-97	
viba_50806	TAI/50/21	bovine	99.7	0	A	ASIA	Sea-97	
viba_50782	TAI/20/21	bovine	99.7	0	A	ASIA	Sea-97	

#### Most Closely Related Prototype Sequences

see <http://www.wrlfmd.org/fmdv-genome/fmd-prototype-strains>

sequence	virus name	Host	% Id.	# Ambig.	serotype	topotype	lineage	sublineage
viba_122	TAI/7/2003	bovine	90.5	0	A	ASIA	Sea-97	
viba_625	TAI/2/97		88.6	0	A	ASIA	Sea-97	
viba_630	TAI/118/87		85.9	0	A	ASIA	Thai-87	
viba_677	IRQ/24/64	bovine	81.7	0	A	ASIA	A22	
viba_864	IND/40/2000	cattle	80.6	0	A	ASIA	G-VII	
viba_336	IRN/1/96	bovine	80.5	1	A	ASIA	Iran-96	
viba_682	IRN/2/87	bovine	80.5	0	A	ASIA	Iran-87	
viba_843	SAU/16/95		80.0	0	A	ASIA	G-VII	
viba_173	UGA/13/66	bovine	80.0	0	A	AFRICA	G-VII	
viba_594	IRN/1/2011	bovine	79.7	0	A	ASIA	Iran-05	FAR-11

Virus sample name:	TAI/6/2021
Sender reference:	40-3/21R1B1
Location of origin:	On Nuea, Mae On, Chiang Mai
Country of origin:	Thailand
Date of collection:	09/10/2021
Host species:	cattle
Serotype:	A
Topotype:	ASIA
Lineage:	Sea-97
Sublineage:	
Sequence length:	630
Ambiguities:	0
Material submitted for sequencing:	WRL-LFBK1
Harvest date of material:	06/07/2022
Primers:	A-1C562F/EUR-2B52R; FMD-3161F/FMD-4303R
Received for sequencing:	21/07/2022
Created:	26/07/2022
Last updated:	26/07/2022

VIBASys IDs: sample 51106, genome 51107, sequence viba\_51108, sequencing info 51109

#### Most Closely Related Sequences

sequence	virus name	Host	% Id.	# Ambig.	serotype	topotype	lineage	sublineage
viba_50798	TAI/48/21	bovine	100.0	0	A	ASIA	Sea-97	
viba_50794	TAI/32/21	bovine	99.8	0	A	ASIA	Sea-97	
viba_50826	TAI/79/21	bovine	99.8	0	A	ASIA	Sea-97	
viba_51112	TAI/7/2021	cattle	99.7	0	A	ASIA	Sea-97	
viba_51104	TAI/5/2021	cattle	99.5	0	A	ASIA	Sea-97	
viba_51096	TAI/3/2021	cattle	99.5	0	A	ASIA	Sea-97	
viba_50822	TAI/64/21	bovine	99.5	0	A	ASIA	Sea-97	
viba_50790	TAI/29/21	bovine	99.5	0	A	ASIA	Sea-97	
viba_50802	TAI/40/21	bovine	99.5	0	A	ASIA	Sea-97	
viba_50786	TAI/28/21	bovine	99.5	0	A	ASIA	Sea-97	

#### Most Closely Related Prototype Sequences

see <http://www.wrlfmd.org/fmdv-genome/fmd-prototype-strains>

sequence	virus name	Host	% Id.	# Ambig.	serotype	topotype	lineage	sublineage
viba_122	TAI/7/2003	bovine	90.3	0	A	ASIA	Sea-97	
viba_625	TAI/2/97		88.1	0	A	ASIA	Sea-97	
viba_630	TAI/118/87		85.7	0	A	ASIA	Thai-87	
viba_677	IRQ/24/64	bovine	81.5	0	A	ASIA	A22	
viba_864	IND/40/2000	cattle	80.3	0	A	ASIA	G-VII	
viba_336	IRN/1/96	bovine	80.3	1	A	ASIA	Iran-96	
viba_682	IRN/2/87	bovine	80.3	0	A	ASIA	Iran-87	
viba_173	UGA/13/66	bovine	80.2	0	A	AFRICA	G-VII	
viba_843	SAU/16/95		79.7	0	A	ASIA	G-VII	
viba_594	IRN/1/2011	bovine	79.6	0	A	ASIA	Iran-05	FAR-11

Virus sample name:	TAI/7/2021
Sender reference:	39-1/21R1B1
Location of origin:	Chae Chang, San Kamphaeng, Chiang Mai
Country of origin:	Thailand
Date of collection:	11/10/2021
Host species:	cattle
Serotype:	A
Topotype:	ASIA
Lineage:	Sea-97
Sublineage:	
Sequence length:	630
Ambiguities:	0
Material submitted for sequencing:	WRL-LFBK1
Harvest date of material:	06/07/2022
Primers:	A-1C562F/EUR-2B52R; FMD-3161F/FMD-4303R
Received for sequencing:	21/07/2022
Created:	26/07/2022
Last updated:	26/07/2022

VIBASys IDs: sample 51110, genome 51111, sequence viba\_51112, sequencing info 51113

#### Most Closely Related Sequences

sequence	virus name	Host	% Id.	# Ambig.	serotype	topotype	lineage	sublineage
viba_51104	TAI/5/2021	cattle	99.8	0	A	ASIA	Sea-97	
viba_51096	TAI/3/2021	cattle	99.8	0	A	ASIA	Sea-97	
viba_50822	TAI/64/21	bovine	99.8	0	A	ASIA	Sea-97	
viba_50794	TAI/32/21	bovine	99.8	0	A	ASIA	Sea-97	
viba_50826	TAI/79/21	bovine	99.8	0	A	ASIA	Sea-97	
viba_50790	TAI/29/21	bovine	99.8	0	A	ASIA	Sea-97	
viba_50802	TAI/40/21	bovine	99.8	0	A	ASIA	Sea-97	
viba_50786	TAI/28/21	bovine	99.8	0	A	ASIA	Sea-97	
viba_50806	TAI/50/21	bovine	99.8	0	A	ASIA	Sea-97	
viba_50782	TAI/20/21	bovine	99.8	0	A	ASIA	Sea-97	

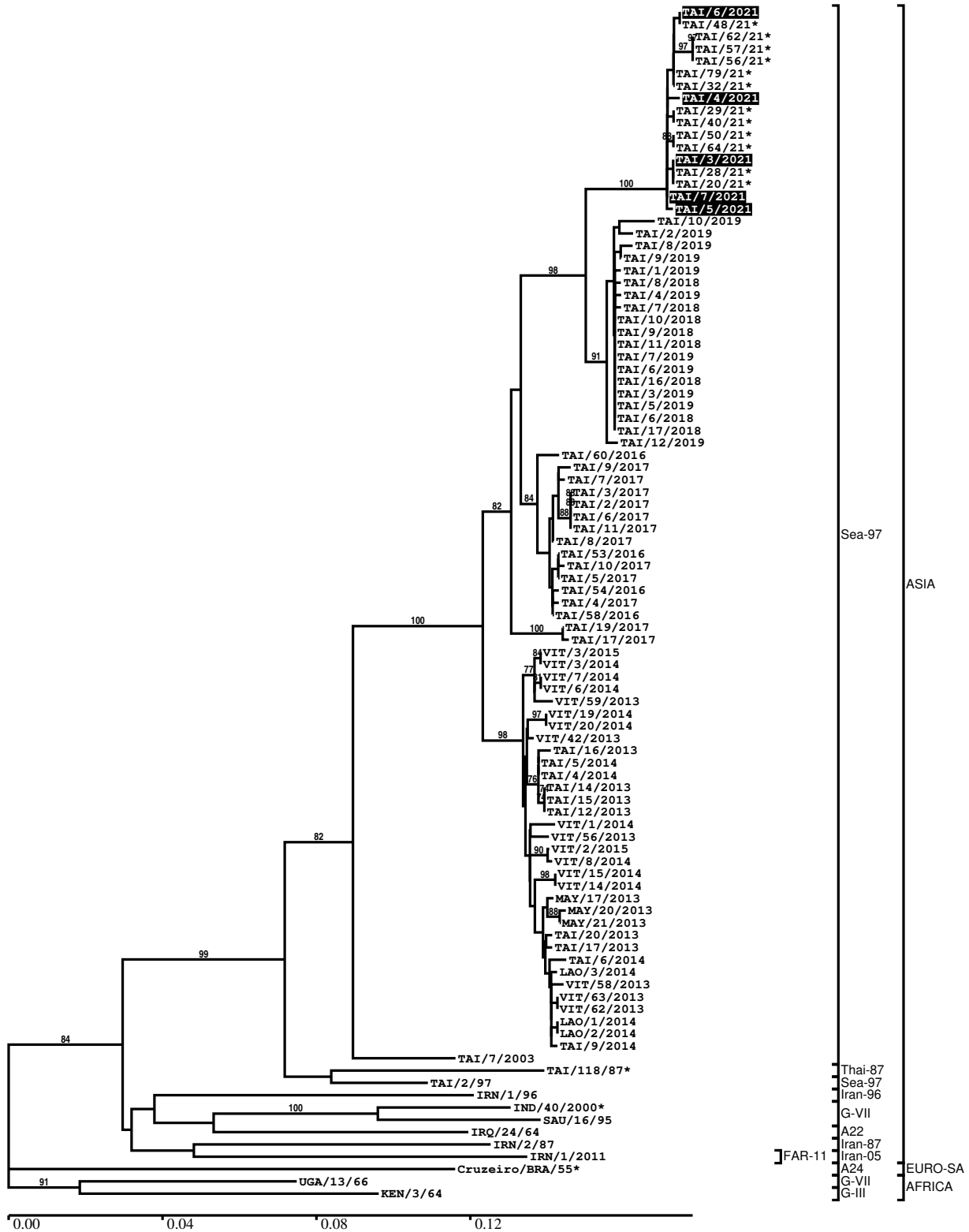
#### Most Closely Related Prototype Sequences

see <http://www.wrlfmd.org/fmdv-genome/fmd-prototype-strains>

sequence	virus name	Host	% Id.	# Ambig.	serotype	topotype	lineage	sublineage
viba_122	TAI/7/2003	bovine	90.6	0	A	ASIA	Sea-97	
viba_625	TAI/2/97		88.4	0	A	ASIA	Sea-97	
viba_630	TAI/118/87		86.1	0	A	ASIA	Thai-87	
viba_677	IRQ/24/64	bovine	81.8	0	A	ASIA	A22	
viba_336	IRN/1/96	bovine	80.7	1	A	ASIA	Iran-96	
viba_864	IND/40/2000	cattle	80.6	0	A	ASIA	G-VII	
viba_682	IRN/2/87	bovine	80.6	0	A	ASIA	Iran-87	
viba_173	UGA/13/66	bovine	80.2	0	A	AFRICA	G-VII	
viba_843	SAU/16/95		80.0	0	A	ASIA	G-VII	
viba_594	IRN/1/2011	bovine	79.9	0	A	ASIA	Iran-05	FAR-11

Report on FMDV A in Thailand in 2021

Batch: WRLFMD/2022/000016



\*, not a WRLFMD Reference Number

## Analysis Parameters

VP1 subsequence extractor:	vp1_A
Query sequence set:	WRLFMD/2022/000016-Thailand-A (5 sequences)
Sequence database set:	allseqs_A (2326 sequences)
Prototype sequence set:	!prototypes_A (40 sequences)
Number of related sequences reported:	10
Minimal VP1 subsequence match length	600
Sequence alignment method:	muscle (default parameters)
Sequence alignment length:	633
Phylogeny reconstruction method:	fdnadist, fneighbor
Number of bootstrap samples:	1000
Random seed for bootstrapping:	1
Displaying bootstrap values above:	70.0%
Number of sequences in tree capped at:	100
Number of prototype sequences in tree:	10
VIBASys version:	reflabs-1.1.2

## Sequences in the Phylogenetic Tree

All sequences in the tree are in taxonomic group FMDV/A

label	accession	host(s)	lab	country	taxonomic information
TAI/6/2021	n/a	cattle	WRLFMD	Thailand	ASIA/Sea-97
TAI/48/21*	n/a	bovine	TRRL	Thailand	ASIA/Sea-97
TAI/62/21*	n/a	bovine	TRRL	Thailand	ASIA/Sea-97
TAI/57/21*	n/a	bovine	TRRL	Thailand	ASIA/Sea-97
TAI/56/21*	n/a	bovine	TRRL	Thailand	ASIA/Sea-97
TAI/79/21*	n/a	bovine	TRRL	Thailand	ASIA/Sea-97
TAI/32/21*	n/a	bovine	TRRL	Thailand	ASIA/Sea-97
TAI/4/2021	n/a	cattle	WRLFMD	Thailand	ASIA/Sea-97
TAI/29/21*	n/a	bovine	TRRL	Thailand	ASIA/Sea-97
TAI/40/21*	n/a	bovine	TRRL	Thailand	ASIA/Sea-97
TAI/50/21*	n/a	bovine	TRRL	Thailand	ASIA/Sea-97
TAI/64/21*	n/a	bovine	TRRL	Thailand	ASIA/Sea-97
TAI/3/2021	n/a	cattle	WRLFMD	Thailand	ASIA/Sea-97
TAI/28/21*	n/a	bovine	TRRL	Thailand	ASIA/Sea-97
TAI/20/21*	n/a	bovine	TRRL	Thailand	ASIA/Sea-97
TAI/7/2021	n/a	cattle	WRLFMD	Thailand	ASIA/Sea-97
TAI/5/2021	n/a	cattle	WRLFMD	Thailand	ASIA/Sea-97
TAI/10/2019	n/a	cattle	WRLFMD	Thailand	ASIA/Sea-97
TAI/2/2019	n/a	cattle	WRLFMD	Thailand	ASIA/Sea-97
TAI/8/2019	n/a	cattle	WRLFMD	Thailand	ASIA/Sea-97
TAI/9/2019	n/a	cattle	WRLFMD	Thailand	ASIA/Sea-97
TAI/1/2019	n/a	cattle	WRLFMD	Thailand	ASIA/Sea-97
TAI/8/2018	n/a	cattle	WRLFMD	Thailand	ASIA/Sea-97
TAI/4/2019	n/a	cattle	WRLFMD	Thailand	ASIA/Sea-97
TAI/7/2018	n/a	cattle	WRLFMD	Thailand	ASIA/Sea-97
TAI/10/2018	n/a	cattle	WRLFMD	Thailand	ASIA/Sea-97
TAI/9/2018	n/a	cattle	WRLFMD	Thailand	ASIA/Sea-97
TAI/11/2018	n/a	cattle	WRLFMD	Thailand	ASIA/Sea-97
TAI/7/2019	n/a	cattle	WRLFMD	Thailand	ASIA/Sea-97
TAI/6/2019	n/a	cattle	WRLFMD	Thailand	ASIA/Sea-97
TAI/16/2018	n/a	cattle	WRLFMD	Thailand	ASIA/Sea-97
TAI/3/2019	n/a	cattle	WRLFMD	Thailand	ASIA/Sea-97
TAI/5/2019	n/a	cattle	WRLFMD	Thailand	ASIA/Sea-97
TAI/6/2018	n/a	cattle	WRLFMD	Thailand	ASIA/Sea-97
TAI/17/2018	n/a	cattle	WRLFMD	Thailand	ASIA/Sea-97
TAI/12/2019	n/a	cattle	WRLFMD	Thailand	ASIA/Sea-97

*continued on next page*



label	accession	host(s)	lab	country	taxonomic information
TAI/60/2016	n/a	cattle	WRLFMD	Thailand	ASIA/Sea-97
TAI/9/2017	n/a	cattle	WRLFMD	Thailand	ASIA/Sea-97
TAI/7/2017	n/a	cattle	WRLFMD	Thailand	ASIA/Sea-97
TAI/3/2017	n/a	cattle	WRLFMD	Thailand	ASIA/Sea-97
TAI/2/2017	n/a	cattle	WRLFMD	Thailand	ASIA/Sea-97
TAI/6/2017	n/a	cattle	WRLFMD	Thailand	ASIA/Sea-97
TAI/11/2017	n/a	cattle	WRLFMD	Thailand	ASIA/Sea-97
TAI/8/2017	n/a	cattle	WRLFMD	Thailand	ASIA/Sea-97
TAI/53/2016	n/a	cattle	WRLFMD	Thailand	ASIA/Sea-97
TAI/10/2017	n/a	cattle	WRLFMD	Thailand	ASIA/Sea-97
TAI/5/2017	n/a	cattle	WRLFMD	Thailand	ASIA/Sea-97
TAI/54/2016	n/a	cattle	WRLFMD	Thailand	ASIA/Sea-97
TAI/4/2017	n/a	cattle	WRLFMD	Thailand	ASIA/Sea-97
TAI/58/2016	n/a	cattle	WRLFMD	Thailand	ASIA/Sea-97
TAI/19/2017	n/a	cattle	WRLFMD	Thailand	ASIA/Sea-97
TAI/17/2017	n/a	cattle	WRLFMD	Thailand	ASIA/Sea-97
VIT/3/2015	n/a	cattle	WRLFMD	Vietnam	ASIA/Sea-97
VIT/3/2014	n/a	cattle	WRLFMD	Vietnam	ASIA/Sea-97
VIT/7/2014	n/a	porcine	WRLFMD	Vietnam	ASIA/Sea-97
VIT/6/2014	n/a	porcine	WRLFMD	Vietnam	ASIA/Sea-97
VIT/59/2013	n/a	cattle	WRLFMD	Vietnam	ASIA/Sea-97
VIT/19/2014	n/a	cattle	WRLFMD	Vietnam	ASIA/Sea-97
VIT/20/2014	n/a	cattle	WRLFMD	Vietnam	ASIA/Sea-97
VIT/42/2013	n/a	cattle	WRLFMD	Vietnam	ASIA/Sea-97
TAI/16/2013	n/a	cattle	WRLFMD	Thailand	ASIA/Sea-97
TAI/5/2014	n/a	cattle	WRLFMD	Thailand	ASIA/Sea-97
TAI/4/2014	n/a	cattle	WRLFMD	Thailand	ASIA/Sea-97
TAI/14/2013	n/a	cattle	WRLFMD	Thailand	ASIA/Sea-97
TAI/15/2013	n/a	cattle	WRLFMD	Thailand	ASIA/Sea-97
TAI/12/2013	n/a	cattle	WRLFMD	Thailand	ASIA/Sea-97
VIT/1/2014	n/a	cattle	WRLFMD	Vietnam	ASIA/Sea-97
VIT/56/2013	n/a	cattle	WRLFMD	Vietnam	ASIA/Sea-97
VIT/2/2015	n/a	cattle	WRLFMD	Vietnam	ASIA/Sea-97
VIT/8/2014	n/a	cattle	WRLFMD	Vietnam	ASIA/Sea-97
VIT/15/2014	n/a	cattle	WRLFMD	Vietnam	ASIA/Sea-97
VIT/14/2014	n/a	cattle	WRLFMD	Vietnam	ASIA/Sea-97
MAY/17/2013	n/a	cattle	WRLFMD	Malaysia	ASIA/Sea-97
MAY/20/2013	n/a	cattle	WRLFMD	Malaysia	ASIA/Sea-97
MAY/21/2013	n/a	cattle	WRLFMD	Malaysia	ASIA/Sea-97
TAI/20/2013	n/a	cattle	WRLFMD	Thailand	ASIA/Sea-97
TAI/17/2013	n/a	cattle	WRLFMD	Thailand	ASIA/Sea-97
TAI/6/2014	n/a	cattle	WRLFMD	Thailand	ASIA/Sea-97
LAO/3/2014	n/a	cattle	WRLFMD	Laos	ASIA/Sea-97
VIT/58/2013	n/a	cattle	WRLFMD	Vietnam	ASIA/Sea-97
VIT/63/2013	n/a	cattle	WRLFMD	Vietnam	ASIA/Sea-97
VIT/62/2013	n/a	cattle	WRLFMD	Vietnam	ASIA/Sea-97
LAO/1/2014	n/a	cattle	WRLFMD	Laos	ASIA/Sea-97
LAO/2/2014	n/a	cattle	WRLFMD	Laos	ASIA/Sea-97
TAI/9/2014	n/a	water buffalo	WRLFMD	Thailand	ASIA/Sea-97
TAI/7/2003	HQ116312	bovine	WRLFMD	Thailand	ASIA/Sea-97
TAI/118/87*	EF208777	n/a	WRLFMD	Thailand	ASIA/Thai-87
TAI/2/97	EF208778	n/a	WRLFMD	Thailand	ASIA/Sea-97
IRN/1/96	EF208771	bovine	WRLFMD	Iran	ASIA/Iran-96
IND/40/2000*	AF390646	cattle	PD-FMD	India	ASIA/G-VII
SAU/16/95	EU553874	n/a	WRLFMD	Saudi Arabia	ASIA/G-VII
IRQ/24/64	AY593763	bovine	PIADC	Iraq	ASIA/A22
IRN/2/87	EF208770	bovine	WRLFMD	Iran	ASIA/Iran-87
IRN/1/2011	KY091292	bovine	WRLFMD	Iran	ASIA/Iran-05/FAR-11
Cruzeiro/BRA/55*	AY593768	bovine	PIADC	Brazil	EURO-SA/A24
UGA/13/66	KF561705	bovine	WRLFMD	Uganda	AFRICA/G-VII
KEN/3/64	AY593761	n/a	PIADC	Kenya	AFRICA/G-III

\*, not a WRLFMD Reference Number

n/a, not available