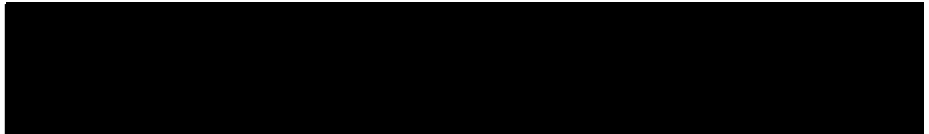




## FMD Genotyping Report

Lab Reference WRL batch Number: WRLFMD/2020/00001

Sender Details:



Date Received: 09/01/2020

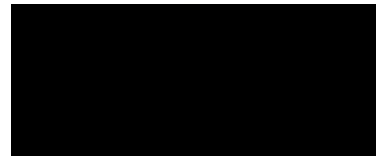
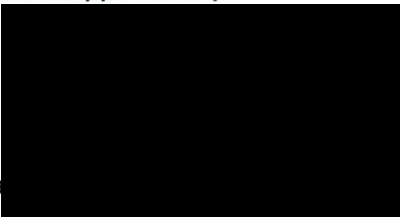
Country of Origin\*: SRI LANKA

Sequencing work has now been completed in respect of the samples you submitted and the details are as attached. Please note that all of our phylogenetic trees can be accessed via the internet at:  
<http://www.wrlfmd.org/>

This is version 2 of this report to correct the labelling of sequences.

Results Approved By:

Official Stamp:



Date

1/4/2021

To help us improve the quality of our service, please send any suggestions or requests to the Reference Laboratory by email ([reflabsfeedback@pirbright.ac.uk](mailto:reflabsfeedback@pirbright.ac.uk)).

\* Data supplied by the customer

# FAO World Reference Laboratory for Foot-and-Mouth Disease (WRLFMD)

## Genotyping Report v.2\*

FMDV serotype: O  
Country: Sri Lanka  
Year: 2018, 2019  
Batch: WRLFMD/2020/00001  
No. of sequences: 16  
Report date: 18th March 2021  
Report generated by: Nick Knowles  
Report checked by: Jemma Wadsworth

\*, Correction to report originally issued 30th January 2020



Copyright © 2021 The Pirbright Institute, Ash Road, Pirbright, Woking GU24 0NF, United Kingdom.

www: <http://www.wrlfmd.org/>

email: [reporting@pirbright.ac.uk](mailto:reporting@pirbright.ac.uk)

The contents of this report should not be reproduced without permission.

Virus sample name:	SRL/16/2018
Sender reference:	SL/FMD/WRL/18/14
Location of origin:	Alayadivembu, Ampara
Country of origin:	Sri Lanka
Date of collection:	23/05/2018
Host species:	cattle
Serotype:	O
Topotype:	ME-SA
Lineage:	Ind-2001
Sublineage:	d
Sequence length:	633
Ambiguities:	0
Material submitted for sequencing:	BTy1
Harvest date of material:	15/01/2020
Primers:	O-1C244F/EUR-2B52R, FMD-3161F/FMD-4303R
Received for sequencing:	25/01/2021
Created:	18/03/2021
Last updated:	18/03/2021

VIBASys IDs: sample 47569, genome 47570, sequence viba\_47571, sequencing info 47572

### Most Closely Related Sequences

sequence	virus name	Host	% Id.	# Ambig.	serotype	topotype	lineage	sublineage
viba_36897	SRL/4/2018	cattle	99.7	0	O	ME-SA	Ind-2001	d
viba_36893	SRL/2/2018	cattle	99.5	0	O	ME-SA	Ind-2001	d
viba_36905	SRL/6/2018	cattle	99.4	0	O	ME-SA	Ind-2001	d
viba_36901	SRL/5/2018	cattle	99.4	0	O	ME-SA	Ind-2001	d
viba_36909	SRL/7/2018	cattle	98.9	0	O	ME-SA	Ind-2001	d
viba_35305	SRL/12/2016	cattle	98.6	0	O	ME-SA	Ind-2001	d
viba_35301	SRL/11/2016	cattle	98.3	0	O	ME-SA	Ind-2001	d
viba_23207	SRL/5/2014	bovine	97.0	0	O	ME-SA	Ind-2001	d
viba_23195	SRL/1/2014	bovine	97.0	0	O	ME-SA	Ind-2001	d
viba_23211	SRL/6/2014	bovine	97.0	0	O	ME-SA	Ind-2001	d

### Most Closely Related Prototype Sequences

see <http://www.wrlfmd.org/fmdv-genome/fmd-prototype-strains>

sequence	virus name	Host	% Id.	# Ambig.	serotype	topotype	lineage	sublineage
viba_293	BHU/3/2009	cattle	95.4	0	O	ME-SA	Ind-2001	d
viba_541	OMN/7/2001	bovine	92.4	0	O	ME-SA	Ind-2001	b
viba_705	KUW/3/97	bovine	91.9	0	O	ME-SA	Ind-2001	a
viba_30238	MUR/19/2016	cattle	91.5	0	O	ME-SA	Ind-2001	e
viba_397	UAE/4/2008	gazelle	90.0	0	O	ME-SA	Ind-2001	c
viba_766	IRN/31/2009	cattle	88.6	0	O	ME-SA	PanAsia-2	FAR-09
viba_666	IRN/18/2010	cattle	88.5	0	O	ME-SA	PanAsia-2	BAL-09
viba_285	UKG/35/2001	porcine	88.5	0	O	ME-SA	PanAsia	
viba_650	IRN/8/2005	ovine	88.2	0	O	ME-SA	PanAsia-2	
viba_505	TUR/264/2009		87.6	0	O	ME-SA	PanAsia-2	SAN-09

Virus sample name:	SRL/17/2018
Sender reference:	SL/FMD/WRL/18/15
Location of origin:	Dehiattakandiya, Ampara
Country of origin:	Sri Lanka
Date of collection:	25/05/2018
Host species:	cattle
Serotype:	O
Topotype:	ME-SA
Lineage:	Ind-2001
Sublineage:	d
Sequence length:	633
Ambiguities:	0
Material submitted for sequencing:	BTY2
Harvest date of material:	17/01/2020
Primers:	O-1C244F/EUR-2B52R, FMD-3161F/FMD-4303R
Received for sequencing:	04/03/2021
Created:	18/03/2021
Last updated:	18/03/2021

VIBASys IDs: sample 47573, genome 47574, sequence viba\_47575, sequencing info 47576

#### Most Closely Related Sequences

sequence	virus name	Host	% Id.	# Ambig.	serotype	topotype	lineage	sublineage
viba_36913	SRL/9/2018	cattle	99.1	0	O	ME-SA	Ind-2001	d
viba_35313	SRL/3/2017	cattle	98.7	0	O	ME-SA	Ind-2001	d
viba_47591	SRL/5/2019a	cattle	97.0	0	O	ME-SA	Ind-2001	d
viba_47631	SRL/17/2019	cattle	97.0	0	O	ME-SA	Ind-2001	d
viba_47607	SRL/8/2019	cattle	97.0	0	O	ME-SA	Ind-2001	d
viba_47619	SRL/13/2019	cattle	96.8	0	O	ME-SA	Ind-2001	d
viba_47623	SRL/14/2019	cattle	96.7	0	O	ME-SA	Ind-2001	d
viba_47603	SRL/7/2019	cattle	96.7	0	O	ME-SA	Ind-2001	d
viba_47627	SRL/16/2019	cattle	96.7	0	O	ME-SA	Ind-2001	d
viba_47615	SRL/12/2019	porcine	96.5	0	O	ME-SA	Ind-2001	d

#### Most Closely Related Prototype Sequences

see <http://www.wrlfmd.org/fmdv-genome/fmd-prototype-strains>

sequence	virus name	Host	% Id.	# Ambig.	serotype	topotype	lineage	sublineage
viba_293	BHU/3/2009	cattle	93.8	0	O	ME-SA	Ind-2001	d
viba_541	OMN/7/2001	bovine	91.5	0	O	ME-SA	Ind-2001	b
viba_30238	MUR/19/2016	cattle	91.5	0	O	ME-SA	Ind-2001	e
viba_705	KUW/3/97	bovine	91.3	0	O	ME-SA	Ind-2001	a
viba_397	UAE/4/2008	gazelle	90.0	0	O	ME-SA	Ind-2001	c
viba_766	IRN/31/2009	cattle	88.7	0	O	ME-SA	PanAsia-2	FAR-09
viba_666	IRN/18/2010	cattle	88.6	0	O	ME-SA	PanAsia-2	BAL-09
viba_285	UKG/35/2001	porcine	88.2	0	O	ME-SA	PanAsia	
viba_860	IRN/6/2015	cattle	88.1	0	O	ME-SA	PanAsia-2	QOM-15
viba_719	IRN/88/2009		88.1	0	O	ME-SA	PanAsia-2	ANT-10

Virus sample name:	SRL/1/2019
Sender reference:	SL/FMD/WRL/19/01
Location of origin:	Thelippalai, Jaffna
Country of origin:	Sri Lanka
Date of collection:	10/01/2019
Host species:	cattle
Serotype:	O
Topotype:	ME-SA
Lineage:	SA-2018
Sublineage:	
Sequence length:	633
Ambiguities:	0
Material submitted for sequencing:	BTy1
Harvest date of material:	14/01/2020
Primers:	O-1C244F/EUR-2B52R, FMD-3161F/FMD-4303R
Received for sequencing:	25/01/2021
Created:	18/03/2021
Last updated:	18/03/2021
VIBASys IDs: sample 47577, genome 47578, sequence viba_47579, sequencing info 47580	

#### Most Closely Related Sequences

sequence	virus name	Host	% Id.	# Ambig.	serotype	topotype	lineage	sublineage
viba_47583	SRL/2/2019	cattle	99.5	0	O	ME-SA	SA-2018	
viba_47032	IND/PD57/2018	water buffalo	99.4	0	O	ME-SA	SA-2018	
viba_47056	IND/PD325/2018	cattle	99.4	0	O	ME-SA	SA-2018	
viba_47016	IND/PD42/2018	cattle	99.4	0	O	ME-SA	SA-2018	
viba_47216	IND/IC233/2018	cattle	99.1	0	O	ME-SA	SA-2018	
viba_47212	IND/IC231/2018	cattle	99.1	0	O	ME-SA	SA-2018	
viba_47196	IND/IC207/2018	cattle	99.1	0	O	ME-SA	SA-2018	
viba_47595	SRL/5/2019b	cattle	98.7	0	O	ME-SA	SA-2018	
viba_47052	IND/PD295/2018	cattle	98.7	0	O	ME-SA	SA-2018	
viba_47024	IND/PD45/2018	cattle	98.7	0	O	ME-SA	SA-2018	

#### Most Closely Related Prototype Sequences

see <http://www.wrlfmd.org/fmdv-genome/fmd-prototype-strains>

sequence	virus name	Host	% Id.	# Ambig.	serotype	topotype	lineage	sublineage
viba_719	IRN/88/2009		91.2	0	O	ME-SA	PanAsia-2	ANT-10
viba_766	IRN/31/2009	cattle	90.7	0	O	ME-SA	PanAsia-2	FAR-09
viba_505	TUR/264/2009		90.4	0	O	ME-SA	PanAsia-2	SAN-09
viba_666	IRN/18/2010	cattle	90.4	0	O	ME-SA	PanAsia-2	BAL-09
viba_650	IRN/8/2005	ovine	90.2	0	O	ME-SA	PanAsia-2	
viba_491	TUR/257/2008		90.0	0	O	ME-SA	PanAsia-2	TER-08
viba_860	IRN/6/2015	cattle	89.7	0	O	ME-SA	PanAsia-2	QOM-15
viba_354	PAK/16/2010	cattle	89.7	0	O	ME-SA	PanAsia-2	PUN-10
viba_705	KUW/3/97	bovine	89.7	0	O	ME-SA	Ind-2001	a
viba_285	UKG/35/2001	porcine	89.4	0	O	ME-SA	PanAsia	

Virus sample name:	SRL/2/2019
Sender reference:	SL/FMD/WRL/19/02
Location of origin:	Manthai West, Vavuniya
Country of origin:	Sri Lanka
Date of collection:	14/02/2019
Host species:	cattle
Serotype:	O
Topotype:	ME-SA
Lineage:	SA-2018
Sublineage:	
Sequence length:	633
Ambiguities:	0
Material submitted for sequencing:	BTY1
Harvest date of material:	14/01/2020
Primers:	O-1C244F/EUR-2B52R, FMD-3161F/FMD-4303R
Received for sequencing:	04/03/2021
Created:	18/03/2021
Last updated:	18/03/2021
VIBASys IDs: sample 47581, genome 47582, sequence viba_47583, sequencing info 47584	

### Most Closely Related Sequences

sequence	virus name	Host	% Id.	# Ambig.	serotype	topotype	lineage	sublineage
viba_47579	SRL/1/2019	cattle	99.5	0	O	ME-SA	SA-2018	
viba_47032	IND/PD57/2018	water buffalo	98.9	0	O	ME-SA	SA-2018	
viba_47056	IND/PD325/2018	cattle	98.9	0	O	ME-SA	SA-2018	
viba_47595	SRL/5/2019b	cattle	98.9	0	O	ME-SA	SA-2018	
viba_47016	IND/PD42/2018	cattle	98.9	0	O	ME-SA	SA-2018	
viba_47216	IND/IC233/2018	cattle	98.6	0	O	ME-SA	SA-2018	
viba_47212	IND/IC231/2018	cattle	98.6	0	O	ME-SA	SA-2018	
viba_47196	IND/IC207/2018	cattle	98.6	0	O	ME-SA	SA-2018	
viba_47052	IND/PD295/2018	cattle	98.3	0	O	ME-SA	SA-2018	
viba_47024	IND/PD45/2018	cattle	98.3	0	O	ME-SA	SA-2018	

### Most Closely Related Prototype Sequences

see <http://www.wrlfmd.org/fmdv-genome/fmd-prototype-strains>

sequence	virus name	Host	% Id.	# Ambig.	serotype	topotype	lineage	sublineage
viba_719	IRN/88/2009		90.7	0	O	ME-SA	PanAsia-2	ANT-10
viba_766	IRN/31/2009	cattle	90.5	0	O	ME-SA	PanAsia-2	FAR-09
viba_505	TUR/264/2009		90.2	0	O	ME-SA	PanAsia-2	SAN-09
viba_666	IRN/18/2010	cattle	90.2	0	O	ME-SA	PanAsia-2	BAL-09
viba_650	IRN/8/2005	ovine	90.0	0	O	ME-SA	PanAsia-2	
viba_491	TUR/257/2008		89.9	0	O	ME-SA	PanAsia-2	TER-08
viba_705	KUW/3/97	bovine	89.9	0	O	ME-SA	Ind-2001	a
viba_860	IRN/6/2015	cattle	89.6	0	O	ME-SA	PanAsia-2	QOM-15
viba_354	PAK/16/2010	cattle	89.6	0	O	ME-SA	PanAsia-2	PUN-10
viba_285	UKG/35/2001	porcine	89.3	0	O	ME-SA	PanAsia	

Virus sample name:	SRL/3/2019
Sender reference:	SL/FMD/WRL/19/03
Location of origin:	Vavuniya, Vavuniya
Country of origin:	Sri Lanka
Date of collection:	01/03/2019
Host species:	cattle
Serotype:	O
Topotype:	ME-SA
Lineage:	Ind-2001
Sublineage:	d
Sequence length:	633
Ambiguities:	0
Material submitted for sequencing:	BTY1
Harvest date of material:	15/01/2020
Primers:	O-1C244F/EUR-2B52R, FMD-3161F/FMD-4303R
Received for sequencing:	04/03/2021
Created:	18/03/2021
Last updated:	18/03/2021

VIBASys IDs: sample 47585, genome 47586, sequence viba\_47587, sequencing info 47588

#### Most Closely Related Sequences

sequence	virus name	Host	% Id.	# Ambig.	serotype	topotype	lineage	sublineage
viba_35309	SRL/15/2016	cattle	96.7	0	O	ME-SA	Ind-2001	d
viba_23260	SRL/31/2014	water buffalo	95.1	0	O	ME-SA	Ind-2001	d
viba_46151	IND/PD1210/2014	cattle	95.1	0	O	ME-SA	Ind-2001	d
viba_46175	IND/PD1324/2014	cattle	95.1	0	O	ME-SA	Ind-2001	d
viba_23227	SRL/11/2014	porcine	95.1	0	O	ME-SA	Ind-2001	d
viba_23256	SRL/30/2014	water buffalo	95.1	0	O	ME-SA	Ind-2001	d
viba_23264	SRL/32/2014	water buffalo	95.1	0	O	ME-SA	Ind-2001	d
viba_23252	SRL/29/2014	water buffalo	95.1	0	O	ME-SA	Ind-2001	d
viba_23203	SRL/3/2014	bovine	95.1	0	O	ME-SA	Ind-2001	d
viba_23207	SRL/5/2014	bovine	94.9	0	O	ME-SA	Ind-2001	d

#### Most Closely Related Prototype Sequences

see <http://www.wrlfmd.org/fmdv-genome/fmd-prototype-strains>

sequence	virus name	Host	% Id.	# Ambig.	serotype	topotype	lineage	sublineage
viba_293	BHU/3/2009	cattle	92.9	0	O	ME-SA	Ind-2001	d
viba_541	OMN/7/2001	bovine	91.3	0	O	ME-SA	Ind-2001	b
viba_30238	MUR/19/2016	cattle	91.2	0	O	ME-SA	Ind-2001	e
viba_705	KUW/3/97	bovine	90.8	0	O	ME-SA	Ind-2001	a
viba_397	UAE/4/2008	gazelle	89.9	0	O	ME-SA	Ind-2001	c
viba_719	IRN/88/2009		89.1	0	O	ME-SA	PanAsia-2	ANT-10
viba_860	IRN/6/2015	cattle	88.6	0	O	ME-SA	PanAsia-2	QOM-15
viba_285	UKG/35/2001	porcine	88.6	0	O	ME-SA	PanAsia	
viba_666	IRN/18/2010	cattle	88.3	0	O	ME-SA	PanAsia-2	BAL-09
viba_766	IRN/31/2009	cattle	88.1	0	O	ME-SA	PanAsia-2	FAR-09

Virus sample name:	SRL/5/2019a
Sender reference:	SL/FMD/WRL/19/06
Location of origin:	Vavuniya, Vavuniya
Country of origin:	Sri Lanka
Date of collection:	04/11/2019
Host species:	cattle
Serotype:	O
Topotype:	ME-SA
Lineage:	Ind-2001
Sublineage:	d
Sequence length:	633
Ambiguities:	0
Material submitted for sequencing:	BTY1
Harvest date of material:	15/01/2020
Primers:	O-1C244F/EUR-2B52R, FMD-3161F/FMD-4303R
Received for sequencing:	04/03/2021
Created:	18/03/2021
Last updated:	18/03/2021

VIBASys IDs: sample 47589, genome 47590, sequence viba\_47591, sequencing info 47592

#### Most Closely Related Sequences

sequence	virus name	Host	% Id.	# Ambig.	serotype	topotype	lineage	sublineage
viba_47631	SRL/17/2019	cattle	100.0	0	O	ME-SA	Ind-2001	d
viba_47607	SRL/8/2019	cattle	100.0	0	O	ME-SA	Ind-2001	d
viba_47619	SRL/13/2019	cattle	99.5	0	O	ME-SA	Ind-2001	d
viba_47623	SRL/14/2019	cattle	99.4	0	O	ME-SA	Ind-2001	d
viba_47603	SRL/7/2019	cattle	99.4	0	O	ME-SA	Ind-2001	d
viba_47627	SRL/16/2019	cattle	99.4	0	O	ME-SA	Ind-2001	d
viba_47615	SRL/12/2019	porcine	99.2	0	O	ME-SA	Ind-2001	d
viba_47611	SRL/10/2019	cattle	99.2	0	O	ME-SA	Ind-2001	d
viba_47599	SRL/6/2019	cattle	99.2	0	O	ME-SA	Ind-2001	d
viba_35313	SRL/3/2017	cattle	97.9	0	O	ME-SA	Ind-2001	d

#### Most Closely Related Prototype Sequences

see <http://www.wrlfmd.org/fmdv-genome/fmd-prototype-strains>

sequence	virus name	Host	% Id.	# Ambig.	serotype	topotype	lineage	sublineage
viba_293	BHU/3/2009	cattle	93.0	0	O	ME-SA	Ind-2001	d
viba_541	OMN/7/2001	bovine	92.3	0	O	ME-SA	Ind-2001	b
viba_705	KUW/3/97	bovine	92.1	0	O	ME-SA	Ind-2001	a
viba_30238	MUR/19/2016	cattle	91.5	0	O	ME-SA	Ind-2001	e
viba_397	UAE/4/2008	gazelle	90.4	0	O	ME-SA	Ind-2001	c
viba_285	UKG/35/2001	porcine	88.8	0	O	ME-SA	PanAsia	
viba_354	PAK/16/2010	cattle	88.7	0	O	ME-SA	PanAsia-2	PUN-10
viba_860	IRN/6/2015	cattle	88.6	0	O	ME-SA	PanAsia-2	QOM-15
viba_766	IRN/31/2009	cattle	88.4	0	O	ME-SA	PanAsia-2	FAR-09
viba_666	IRN/18/2010	cattle	88.2	0	O	ME-SA	PanAsia-2	BAL-09



Virus sample name:	SRL/5/2019b
Sender reference:	SL/FMD/WRL/19/06
Location of origin:	Vavuniya, Vavuniya
Country of origin:	Sri Lanka
Date of collection:	04/11/2019
Host species:	cattle
Serotype:	O
Topotype:	ME-SA
Lineage:	SA-2018
Sublineage:	
Sequence length:	633
Ambiguities:	0
Material submitted for sequencing:	BTY1
Harvest date of material:	15/01/2020
Primers:	O-1C244F/EUR-2B52R, FMD-3161F/FMD-4303R
Received for sequencing:	04/03/2021
Created:	18/03/2021
Last updated:	18/03/2021

VIBASys IDs: sample 47593, genome 47594, sequence viba\_47595, sequencing info 47596

### Most Closely Related Sequences

sequence	virus name	Host	% Id.	# Ambig.	serotype	topotype	lineage	sublineage
viba_47583	SRL/2/2019	cattle	98.9	0	O	ME-SA	SA-2018	
viba_47579	SRL/1/2019	cattle	98.7	0	O	ME-SA	SA-2018	
viba_47032	IND/PD57/2018	water buffalo	98.1	0	O	ME-SA	SA-2018	
viba_47056	IND/PD325/2018	cattle	98.1	0	O	ME-SA	SA-2018	
viba_47016	IND/PD42/2018	cattle	98.1	0	O	ME-SA	SA-2018	
viba_47216	IND/IC233/2018	cattle	97.8	0	O	ME-SA	SA-2018	
viba_47212	IND/IC231/2018	cattle	97.8	0	O	ME-SA	SA-2018	
viba_47196	IND/IC207/2018	cattle	97.8	0	O	ME-SA	SA-2018	
viba_47052	IND/PD295/2018	cattle	97.5	0	O	ME-SA	SA-2018	
viba_47024	IND/PD45/2018	cattle	97.5	0	O	ME-SA	SA-2018	

### Most Closely Related Prototype Sequences

see <http://www.wrlfmd.org/fmdv-genome/fmd-prototype-strains>

sequence	virus name	Host	% Id.	# Ambig.	serotype	topotype	lineage	sublineage
viba_766	IRN/31/2009	cattle	90.2	0	O	ME-SA	PanAsia-2	FAR-09
viba_719	IRN/88/2009		90.0	0	O	ME-SA	PanAsia-2	ANT-10
viba_505	TUR/264/2009		89.9	0	O	ME-SA	PanAsia-2	SAN-09
viba_666	IRN/18/2010	cattle	89.9	0	O	ME-SA	PanAsia-2	BAL-09
viba_705	KUW/3/97	bovine	89.7	0	O	ME-SA	Ind-2001	a
viba_860	IRN/6/2015	cattle	89.6	0	O	ME-SA	PanAsia-2	QOM-15
viba_650	IRN/8/2005	ovine	89.4	0	O	ME-SA	PanAsia-2	
viba_354	PAK/16/2010	cattle	89.3	0	O	ME-SA	PanAsia-2	PUN-10
viba_491	TUR/257/2008		89.3	0	O	ME-SA	PanAsia-2	TER-08
viba_285	UKG/35/2001	porcine	89.1	0	O	ME-SA	PanAsia	

Virus sample name:	SRL/6/2019
Sender reference:	SL/FMD/WRL/19/07
Location of origin:	Galnewa, Anuradhapura
Country of origin:	Sri Lanka
Date of collection:	13/11/2019
Host species:	cattle
Serotype:	O
Topotype:	ME-SA
Lineage:	Ind-2001
Sublineage:	d
Sequence length:	633
Ambiguities:	0
Material submitted for sequencing:	BTY1
Harvest date of material:	16/01/2020
Primers:	O-1C244F/EUR-2B52R, FMD-3161F/FMD-4303R
Received for sequencing:	04/03/2021
Created:	18/03/2021
Last updated:	18/03/2021

VIBASys IDs: sample 47597, genome 47598, sequence viba\_47599, sequencing info 47600

### Most Closely Related Sequences

sequence	virus name	Host	% Id.	# Ambig.	serotype	topotype	lineage	sublineage
viba_47623	SRL/14/2019	cattle	99.8	0	O	ME-SA	Ind-2001	d
viba_47603	SRL/7/2019	cattle	99.8	0	O	ME-SA	Ind-2001	d
viba_47615	SRL/12/2019	porcine	99.7	0	O	ME-SA	Ind-2001	d
viba_47611	SRL/10/2019	cattle	99.7	0	O	ME-SA	Ind-2001	d
viba_47591	SRL/5/2019a	cattle	99.2	0	O	ME-SA	Ind-2001	d
viba_47631	SRL/17/2019	cattle	99.2	0	O	ME-SA	Ind-2001	d
viba_47607	SRL/8/2019	cattle	99.2	0	O	ME-SA	Ind-2001	d
viba_47619	SRL/13/2019	cattle	99.1	0	O	ME-SA	Ind-2001	d
viba_47627	SRL/16/2019	cattle	98.9	0	O	ME-SA	Ind-2001	d
viba_35313	SRL/3/2017	cattle	97.5	0	O	ME-SA	Ind-2001	d

### Most Closely Related Prototype Sequences

see <http://www.wrlfmd.org/fmdv-genome/fmd-prototype-strains>

sequence	virus name	Host	% Id.	# Ambig.	serotype	topotype	lineage	sublineage
viba_293	BHU/3/2009	cattle	92.6	0	O	ME-SA	Ind-2001	d
viba_541	OMN/7/2001	bovine	91.6	0	O	ME-SA	Ind-2001	b
viba_705	KUW/3/97	bovine	91.5	0	O	ME-SA	Ind-2001	a
viba_30238	MUR/19/2016	cattle	91.1	0	O	ME-SA	Ind-2001	e
viba_397	UAE/4/2008	gazelle	90.0	0	O	ME-SA	Ind-2001	c
viba_860	IRN/6/2015	cattle	88.8	0	O	ME-SA	PanAsia-2	QOM-15
viba_285	UKG/35/2001	porcine	88.5	0	O	ME-SA	PanAsia	
viba_719	IRN/88/2009		88.2	0	O	ME-SA	PanAsia-2	ANT-10
viba_766	IRN/31/2009	cattle	87.6	0	O	ME-SA	PanAsia-2	FAR-09
viba_666	IRN/18/2010	cattle	87.6	0	O	ME-SA	PanAsia-2	BAL-09

Virus sample name:	SRL/7/2019
Sender reference:	SL/FMD/WRL/19/08
Location of origin:	Galnewa, Anuradhapura
Country of origin:	Sri Lanka
Date of collection:	13/11/2019
Host species:	cattle
Serotype:	O
Topotype:	ME-SA
Lineage:	Ind-2001
Sublineage:	d
Sequence length:	633
Ambiguities:	0
Material submitted for sequencing:	BTY1
Harvest date of material:	15/01/2020
Primers:	O-1C244F/EUR-2B52R, FMD-3161F/FMD-4303R
Received for sequencing:	04/03/2021
Created:	18/03/2021
Last updated:	18/03/2021

VIBASys IDs: sample 47601, genome 47602, sequence viba\_47603, sequencing info 47604

### Most Closely Related Sequences

sequence	virus name	Host	% Id.	# Ambig.	serotype	topotype	lineage	sublineage
viba_47623	SRL/14/2019	cattle	100.0	0	O	ME-SA	Ind-2001	d
viba_47615	SRL/12/2019	porcine	99.8	0	O	ME-SA	Ind-2001	d
viba_47611	SRL/10/2019	cattle	99.8	0	O	ME-SA	Ind-2001	d
viba_47599	SRL/6/2019	cattle	99.8	0	O	ME-SA	Ind-2001	d
viba_47591	SRL/5/2019a	cattle	99.4	0	O	ME-SA	Ind-2001	d
viba_47631	SRL/17/2019	cattle	99.4	0	O	ME-SA	Ind-2001	d
viba_47607	SRL/8/2019	cattle	99.4	0	O	ME-SA	Ind-2001	d
viba_47619	SRL/13/2019	cattle	99.2	0	O	ME-SA	Ind-2001	d
viba_47627	SRL/16/2019	cattle	99.1	0	O	ME-SA	Ind-2001	d
viba_35313	SRL/3/2017	cattle	97.6	0	O	ME-SA	Ind-2001	d

### Most Closely Related Prototype Sequences

see <http://www.wrlfmd.org/fmdv-genome/fmd-prototype-strains>

sequence	virus name	Host	% Id.	# Ambig.	serotype	topotype	lineage	sublineage
viba_293	BHU/3/2009	cattle	92.7	0	O	ME-SA	Ind-2001	d
viba_541	OMN/7/2001	bovine	91.8	0	O	ME-SA	Ind-2001	b
viba_705	KUW/3/97	bovine	91.6	0	O	ME-SA	Ind-2001	a
viba_30238	MUR/19/2016	cattle	91.4	0	O	ME-SA	Ind-2001	e
viba_397	UAE/4/2008	gazelle	90.2	0	O	ME-SA	Ind-2001	c
viba_860	IRN/6/2015	cattle	88.9	0	O	ME-SA	PanAsia-2	QOM-15
viba_285	UKG/35/2001	porcine	88.5	0	O	ME-SA	PanAsia	
viba_719	IRN/88/2009		88.3	0	O	ME-SA	PanAsia-2	ANT-10
viba_766	IRN/31/2009	cattle	87.8	0	O	ME-SA	PanAsia-2	FAR-09
viba_666	IRN/18/2010	cattle	87.8	0	O	ME-SA	PanAsia-2	BAL-09

Virus sample name:	SRL/8/2019
Sender reference:	SL/FMD/WRL/19/10
Location of origin:	Poojapitiya, Kandy
Country of origin:	Sri Lanka
Date of collection:	21/11/2019
Host species:	cattle
Serotype:	O
Topotype:	ME-SA
Lineage:	Ind-2001
Sublineage:	d
Sequence length:	633
Ambiguities:	0
Material submitted for sequencing:	BTY1
Harvest date of material:	11/01/2020
Primers:	O-1C244F/EUR-2B52R, FMD-3161F/FMD-4303R
Received for sequencing:	04/03/2021
Created:	18/03/2021
Last updated:	18/03/2021
VIBASys IDs: sample 47605, genome 47606, sequence viba_47607, sequencing info 47608	

#### Most Closely Related Sequences

sequence	virus name	Host	% Id.	# Ambig.	serotype	topotype	lineage	sublineage
viba_47591	SRL/5/2019a	cattle	100.0	0	O	ME-SA	Ind-2001	d
viba_47631	SRL/17/2019	cattle	100.0	0	O	ME-SA	Ind-2001	d
viba_47619	SRL/13/2019	cattle	99.5	0	O	ME-SA	Ind-2001	d
viba_47623	SRL/14/2019	cattle	99.4	0	O	ME-SA	Ind-2001	d
viba_47603	SRL/7/2019	cattle	99.4	0	O	ME-SA	Ind-2001	d
viba_47627	SRL/16/2019	cattle	99.4	0	O	ME-SA	Ind-2001	d
viba_47615	SRL/12/2019	porcine	99.2	0	O	ME-SA	Ind-2001	d
viba_47611	SRL/10/2019	cattle	99.2	0	O	ME-SA	Ind-2001	d
viba_47599	SRL/6/2019	cattle	99.2	0	O	ME-SA	Ind-2001	d
viba_35313	SRL/3/2017	cattle	97.9	0	O	ME-SA	Ind-2001	d

#### Most Closely Related Prototype Sequences

see <http://www.wrlfmd.org/fmdv-genome/fmd-prototype-strains>

sequence	virus name	Host	% Id.	# Ambig.	serotype	topotype	lineage	sublineage
viba_293	BHU/3/2009	cattle	93.0	0	O	ME-SA	Ind-2001	d
viba_541	OMN/7/2001	bovine	92.3	0	O	ME-SA	Ind-2001	b
viba_705	KUW/3/97	bovine	92.1	0	O	ME-SA	Ind-2001	a
viba_30238	MUR/19/2016	cattle	91.5	0	O	ME-SA	Ind-2001	e
viba_397	UAE/4/2008	gazelle	90.4	0	O	ME-SA	Ind-2001	c
viba_285	UKG/35/2001	porcine	88.8	0	O	ME-SA	PanAsia	
viba_354	PAK/16/2010	cattle	88.7	0	O	ME-SA	PanAsia-2	PUN-10
viba_860	IRN/6/2015	cattle	88.6	0	O	ME-SA	PanAsia-2	QOM-15
viba_766	IRN/31/2009	cattle	88.4	0	O	ME-SA	PanAsia-2	FAR-09
viba_666	IRN/18/2010	cattle	88.2	0	O	ME-SA	PanAsia-2	BAL-09

Virus sample name:	SRL/10/2019
Sender reference:	SL/FMD/WRL/19/12
Location of origin:	Thambuttegama, Anuradhapura
Country of origin:	Sri Lanka
Date of collection:	22/11/2019
Host species:	cattle
Serotype:	O
Topotype:	ME-SA
Lineage:	Ind-2001
Sublineage:	d
Sequence length:	633
Ambiguities:	0
Material submitted for sequencing:	BTY1
Harvest date of material:	16/01/2020
Primers:	O-1C244F/EUR-2B52R, FMD-3161F/FMD-4303R
Received for sequencing:	04/03/2021
Created:	18/03/2021
Last updated:	18/03/2021

VIBASys IDs: sample 47609, genome 47610, sequence viba\_47611, sequencing info 47612

### Most Closely Related Sequences

sequence	virus name	Host	% Id.	# Ambig.	serotype	topotype	lineage	sublineage
viba_47615	SRL/12/2019	porcine	100.0	0	O	ME-SA	Ind-2001	d
viba_47623	SRL/14/2019	cattle	99.8	0	O	ME-SA	Ind-2001	d
viba_47603	SRL/7/2019	cattle	99.8	0	O	ME-SA	Ind-2001	d
viba_47599	SRL/6/2019	cattle	99.7	0	O	ME-SA	Ind-2001	d
viba_47591	SRL/5/2019a	cattle	99.2	0	O	ME-SA	Ind-2001	d
viba_47631	SRL/17/2019	cattle	99.2	0	O	ME-SA	Ind-2001	d
viba_47607	SRL/8/2019	cattle	99.2	0	O	ME-SA	Ind-2001	d
viba_47619	SRL/13/2019	cattle	99.1	0	O	ME-SA	Ind-2001	d
viba_47627	SRL/16/2019	cattle	98.9	0	O	ME-SA	Ind-2001	d
viba_35313	SRL/3/2017	cattle	97.5	0	O	ME-SA	Ind-2001	d

### Most Closely Related Prototype Sequences

see <http://www.wrlfmd.org/fmdv-genome/fmd-prototype-strains>

sequence	virus name	Host	% Id.	# Ambig.	serotype	topotype	lineage	sublineage
viba_293	BHU/3/2009	cattle	92.6	0	O	ME-SA	Ind-2001	d
viba_541	OMN/7/2001	bovine	91.9	0	O	ME-SA	Ind-2001	b
viba_705	KUW/3/97	bovine	91.8	0	O	ME-SA	Ind-2001	a
viba_30238	MUR/19/2016	cattle	91.5	0	O	ME-SA	Ind-2001	e
viba_397	UAE/4/2008	gazelle	90.4	0	O	ME-SA	Ind-2001	c
viba_860	IRN/6/2015	cattle	89.1	0	O	ME-SA	PanAsia-2	QOM-15
viba_285	UKG/35/2001	porcine	88.6	0	O	ME-SA	PanAsia	
viba_719	IRN/88/2009		88.5	0	O	ME-SA	PanAsia-2	ANT-10
viba_766	IRN/31/2009	cattle	87.9	0	O	ME-SA	PanAsia-2	FAR-09
viba_666	IRN/18/2010	cattle	87.9	0	O	ME-SA	PanAsia-2	BAL-09

Virus sample name:	SRL/12/2019
Sender reference:	SL/FMD/WRL/19/16
Location of origin:	Tambuttegama, Anuradhapura
Country of origin:	Sri Lanka
Date of collection:	22/11/2019
Host species:	porcine
Serotype:	O
Topotype:	ME-SA
Lineage:	Ind-2001
Sublineage:	d
Sequence length:	633
Ambiguities:	0
Material submitted for sequencing:	RS1
Harvest date of material:	13/01/2020
Primers:	O-1C244F/EUR-2B52R, FMD-3161F/FMD-4303R
Received for sequencing:	04/03/2021
Created:	18/03/2021
Last updated:	18/03/2021

VIBASys IDs: sample 47613, genome 47614, sequence viba\_47615, sequencing info 47616

### Most Closely Related Sequences

sequence	virus name	Host	% Id.	# Ambig.	serotype	topotype	lineage	sublineage
viba_47611	SRL/10/2019	cattle	100.0	0	O	ME-SA	Ind-2001	d
viba_47623	SRL/14/2019	cattle	99.8	0	O	ME-SA	Ind-2001	d
viba_47603	SRL/7/2019	cattle	99.8	0	O	ME-SA	Ind-2001	d
viba_47599	SRL/6/2019	cattle	99.7	0	O	ME-SA	Ind-2001	d
viba_47591	SRL/5/2019a	cattle	99.2	0	O	ME-SA	Ind-2001	d
viba_47631	SRL/17/2019	cattle	99.2	0	O	ME-SA	Ind-2001	d
viba_47607	SRL/8/2019	cattle	99.2	0	O	ME-SA	Ind-2001	d
viba_47619	SRL/13/2019	cattle	99.1	0	O	ME-SA	Ind-2001	d
viba_47627	SRL/16/2019	cattle	98.9	0	O	ME-SA	Ind-2001	d
viba_35313	SRL/3/2017	cattle	97.5	0	O	ME-SA	Ind-2001	d

### Most Closely Related Prototype Sequences

see <http://www.wrlfmd.org/fmdv-genome/fmd-prototype-strains>

sequence	virus name	Host	% Id.	# Ambig.	serotype	topotype	lineage	sublineage
viba_293	BHU/3/2009	cattle	92.6	0	O	ME-SA	Ind-2001	d
viba_541	OMN/7/2001	bovine	91.9	0	O	ME-SA	Ind-2001	b
viba_705	KUW/3/97	bovine	91.8	0	O	ME-SA	Ind-2001	a
viba_30238	MUR/19/2016	cattle	91.5	0	O	ME-SA	Ind-2001	e
viba_397	UAE/4/2008	gazelle	90.4	0	O	ME-SA	Ind-2001	c
viba_860	IRN/6/2015	cattle	89.1	0	O	ME-SA	PanAsia-2	QOM-15
viba_285	UKG/35/2001	porcine	88.6	0	O	ME-SA	PanAsia	
viba_719	IRN/88/2009		88.5	0	O	ME-SA	PanAsia-2	ANT-10
viba_766	IRN/31/2009	cattle	87.9	0	O	ME-SA	PanAsia-2	FAR-09
viba_666	IRN/18/2010	cattle	87.9	0	O	ME-SA	PanAsia-2	BAL-09

Virus sample name:	SRL/13/2019
Sender reference:	SL/FMD/WRL/19/14
Location of origin:	Panduwasnuwara, Kurunegala
Country of origin:	Sri Lanka
Date of collection:	24/11/2019
Host species:	cattle
Serotype:	O
Topotype:	ME-SA
Lineage:	Ind-2001
Sublineage:	d
Sequence length:	633
Ambiguities:	0
Material submitted for sequencing:	BTY1
Harvest date of material:	16/01/2020
Primers:	O-1C244F/EUR-2B52R, FMD-3161F/FMD-4303R
Received for sequencing:	04/03/2021
Created:	18/03/2021
Last updated:	18/03/2021

VIBASys IDs: sample 47617, genome 47618, sequence viba\_47619, sequencing info 47620

#### Most Closely Related Sequences

sequence	virus name	Host	% Id.	# Ambig.	serotype	topotype	lineage	sublineage
viba_47591	SRL/5/2019a	cattle	99.5	0	O	ME-SA	Ind-2001	d
viba_47631	SRL/17/2019	cattle	99.5	0	O	ME-SA	Ind-2001	d
viba_47607	SRL/8/2019	cattle	99.5	0	O	ME-SA	Ind-2001	d
viba_47627	SRL/16/2019	cattle	99.5	0	O	ME-SA	Ind-2001	d
viba_47623	SRL/14/2019	cattle	99.2	0	O	ME-SA	Ind-2001	d
viba_47603	SRL/7/2019	cattle	99.2	0	O	ME-SA	Ind-2001	d
viba_47615	SRL/12/2019	porcine	99.1	0	O	ME-SA	Ind-2001	d
viba_47611	SRL/10/2019	cattle	99.1	0	O	ME-SA	Ind-2001	d
viba_47599	SRL/6/2019	cattle	99.1	0	O	ME-SA	Ind-2001	d
viba_35313	SRL/3/2017	cattle	97.8	0	O	ME-SA	Ind-2001	d

#### Most Closely Related Prototype Sequences

see <http://www.wrlfmd.org/fmdv-genome/fmd-prototype-strains>

sequence	virus name	Host	% Id.	# Ambig.	serotype	topotype	lineage	sublineage
viba_293	BHU/3/2009	cattle	92.9	0	O	ME-SA	Ind-2001	d
viba_541	OMN/7/2001	bovine	91.8	0	O	ME-SA	Ind-2001	b
viba_705	KUW/3/97	bovine	91.6	0	O	ME-SA	Ind-2001	a
viba_30238	MUR/19/2016	cattle	91.4	0	O	ME-SA	Ind-2001	e
viba_397	UAE/4/2008	gazelle	90.2	0	O	ME-SA	Ind-2001	c
viba_285	UKG/35/2001	porcine	88.5	0	O	ME-SA	PanAsia	
viba_354	PAK/16/2010	cattle	88.4	0	O	ME-SA	PanAsia-2	PUN-10
viba_860	IRN/6/2015	cattle	88.2	0	O	ME-SA	PanAsia-2	QOM-15
viba_766	IRN/31/2009	cattle	88.1	0	O	ME-SA	PanAsia-2	FAR-09
viba_666	IRN/18/2010	cattle	87.9	0	O	ME-SA	PanAsia-2	BAL-09

Virus sample name:	SRL/14/2019
Sender reference:	SL/FMD/WRL/19/15
Location of origin:	Tambuttegama, Anuradhapura
Country of origin:	Sri Lanka
Date of collection:	26/11/2019
Host species:	cattle
Serotype:	O
Topotype:	ME-SA
Lineage:	Ind-2001
Sublineage:	d
Sequence length:	633
Ambiguities:	0
Material submitted for sequencing:	BTy1
Harvest date of material:	16/01/2020
Primers:	O-1C244F/EUR-2B52R, FMD-3161F/FMD-4303R
Received for sequencing:	25/01/2021
Created:	18/03/2021
Last updated:	18/03/2021

VIBASys IDs: sample 47621, genome 47622, sequence viba\_47623, sequencing info 47624

### Most Closely Related Sequences

sequence	virus name	Host	% Id.	# Ambig.	serotype	topotype	lineage	sublineage
viba_47603	SRL/7/2019	cattle	100.0	0	O	ME-SA	Ind-2001	d
viba_47615	SRL/12/2019	porcine	99.8	0	O	ME-SA	Ind-2001	d
viba_47611	SRL/10/2019	cattle	99.8	0	O	ME-SA	Ind-2001	d
viba_47599	SRL/6/2019	cattle	99.8	0	O	ME-SA	Ind-2001	d
viba_47591	SRL/5/2019a	cattle	99.4	0	O	ME-SA	Ind-2001	d
viba_47631	SRL/17/2019	cattle	99.4	0	O	ME-SA	Ind-2001	d
viba_47607	SRL/8/2019	cattle	99.4	0	O	ME-SA	Ind-2001	d
viba_47619	SRL/13/2019	cattle	99.2	0	O	ME-SA	Ind-2001	d
viba_47627	SRL/16/2019	cattle	99.1	0	O	ME-SA	Ind-2001	d
viba_35313	SRL/3/2017	cattle	97.6	0	O	ME-SA	Ind-2001	d

### Most Closely Related Prototype Sequences

see <http://www.wrlfmd.org/fmdv-genome/fmd-prototype-strains>

sequence	virus name	Host	% Id.	# Ambig.	serotype	topotype	lineage	sublineage
viba_293	BHU/3/2009	cattle	92.7	0	O	ME-SA	Ind-2001	d
viba_541	OMN/7/2001	bovine	91.8	0	O	ME-SA	Ind-2001	b
viba_705	KUW/3/97	bovine	91.6	0	O	ME-SA	Ind-2001	a
viba_30238	MUR/19/2016	cattle	91.4	0	O	ME-SA	Ind-2001	e
viba_397	UAE/4/2008	gazelle	90.2	0	O	ME-SA	Ind-2001	c
viba_860	IRN/6/2015	cattle	88.9	0	O	ME-SA	PanAsia-2	QOM-15
viba_285	UKG/35/2001	porcine	88.5	0	O	ME-SA	PanAsia	
viba_719	IRN/88/2009		88.3	0	O	ME-SA	PanAsia-2	ANT-10
viba_766	IRN/31/2009	cattle	87.8	0	O	ME-SA	PanAsia-2	FAR-09
viba_666	IRN/18/2010	cattle	87.8	0	O	ME-SA	PanAsia-2	BAL-09



Virus sample name:	SRL/16/2019
Sender reference:	SL/FMD/WRL/19/18
Location of origin:	Nochchiyagama, Anuradhapura
Country of origin:	Sri Lanka
Date of collection:	16/12/2019
Host species:	cattle
Serotype:	O
Topotype:	ME-SA
Lineage:	Ind-2001
Sublineage:	d
Sequence length:	633
Ambiguities:	0
Material submitted for sequencing:	BTY1
Harvest date of material:	17/01/2020
Primers:	O-1C244F/EUR-2B52R, FMD-3161F/FMD-4303R
Received for sequencing:	04/03/2021
Created:	18/03/2021
Last updated:	18/03/2021

VIBASys IDs: sample 47625, genome 47626, sequence viba\_47627, sequencing info 47628

### Most Closely Related Sequences

sequence	virus name	Host	% Id.	# Ambig.	serotype	topotype	lineage	sublineage
viba_47619	SRL/13/2019	cattle	99.5	0	O	ME-SA	Ind-2001	d
viba_47591	SRL/5/2019a	cattle	99.4	0	O	ME-SA	Ind-2001	d
viba_47631	SRL/17/2019	cattle	99.4	0	O	ME-SA	Ind-2001	d
viba_47607	SRL/8/2019	cattle	99.4	0	O	ME-SA	Ind-2001	d
viba_47623	SRL/14/2019	cattle	99.1	0	O	ME-SA	Ind-2001	d
viba_47603	SRL/7/2019	cattle	99.1	0	O	ME-SA	Ind-2001	d
viba_47615	SRL/12/2019	cattle	98.9	0	O	ME-SA	Ind-2001	d
viba_47611	SRL/10/2019	cattle	98.9	0	O	ME-SA	Ind-2001	d
viba_47599	SRL/6/2019	cattle	98.9	0	O	ME-SA	Ind-2001	d
viba_35313	SRL/3/2017	cattle	97.6	0	O	ME-SA	Ind-2001	d

### Most Closely Related Prototype Sequences

see <http://www.wrlfmd.org/fmdv-genome/fmd-prototype-strains>

sequence	virus name	Host	% Id.	# Ambig.	serotype	topotype	lineage	sublineage
viba_293	BHU/3/2009	cattle	92.7	0	O	ME-SA	Ind-2001	d
viba_541	OMN/7/2001	bovine	91.9	0	O	ME-SA	Ind-2001	b
viba_705	KUW/3/97	bovine	91.8	0	O	ME-SA	Ind-2001	a
viba_30238	MUR/19/2016	cattle	91.5	0	O	ME-SA	Ind-2001	e
viba_397	UAE/4/2008	gazelle	90.4	0	O	ME-SA	Ind-2001	c
viba_285	UKG/35/2001	porcine	88.6	0	O	ME-SA	PanAsia	
viba_354	PAK/16/2010	cattle	88.5	0	O	ME-SA	PanAsia-2	PUN-10
viba_860	IRN/6/2015	cattle	88.4	0	O	ME-SA	PanAsia-2	QOM-15
viba_766	IRN/31/2009	cattle	88.2	0	O	ME-SA	PanAsia-2	FAR-09
viba_666	IRN/18/2010	cattle	88.1	0	O	ME-SA	PanAsia-2	BAL-09

Virus sample name:	SRL/17/2019
Sender reference:	SL/FMD/WRL/19/19
Location of origin:	Welisara, Gampaha
Country of origin:	Sri Lanka
Date of collection:	17/12/2019
Host species:	cattle
Serotype:	O
Topotype:	ME-SA
Lineage:	Ind-2001
Sublineage:	d
Sequence length:	633
Ambiguities:	0
Material submitted for sequencing:	BTy1
Harvest date of material:	16/01/2020
Primers:	O-1C244F/EUR-2B52R, FMD-3161F/FMD-4303R
Received for sequencing:	25/01/2021
Created:	18/03/2021
Last updated:	18/03/2021
VIBASys IDs: sample 47629, genome 47630, sequence viba_47631, sequencing info 47632	

#### Most Closely Related Sequences

sequence	virus name	Host	% Id.	# Ambig.	serotype	topotype	lineage	sublineage
viba_47591	SRL/5/2019a	cattle	100.0	0	O	ME-SA	Ind-2001	d
viba_47607	SRL/8/2019	cattle	100.0	0	O	ME-SA	Ind-2001	d
viba_47619	SRL/13/2019	cattle	99.5	0	O	ME-SA	Ind-2001	d
viba_47623	SRL/14/2019	cattle	99.4	0	O	ME-SA	Ind-2001	d
viba_47603	SRL/7/2019	cattle	99.4	0	O	ME-SA	Ind-2001	d
viba_47627	SRL/16/2019	cattle	99.4	0	O	ME-SA	Ind-2001	d
viba_47615	SRL/12/2019	porcine	99.2	0	O	ME-SA	Ind-2001	d
viba_47611	SRL/10/2019	cattle	99.2	0	O	ME-SA	Ind-2001	d
viba_47599	SRL/6/2019	cattle	99.2	0	O	ME-SA	Ind-2001	d
viba_35313	SRL/3/2017	cattle	97.9	0	O	ME-SA	Ind-2001	d

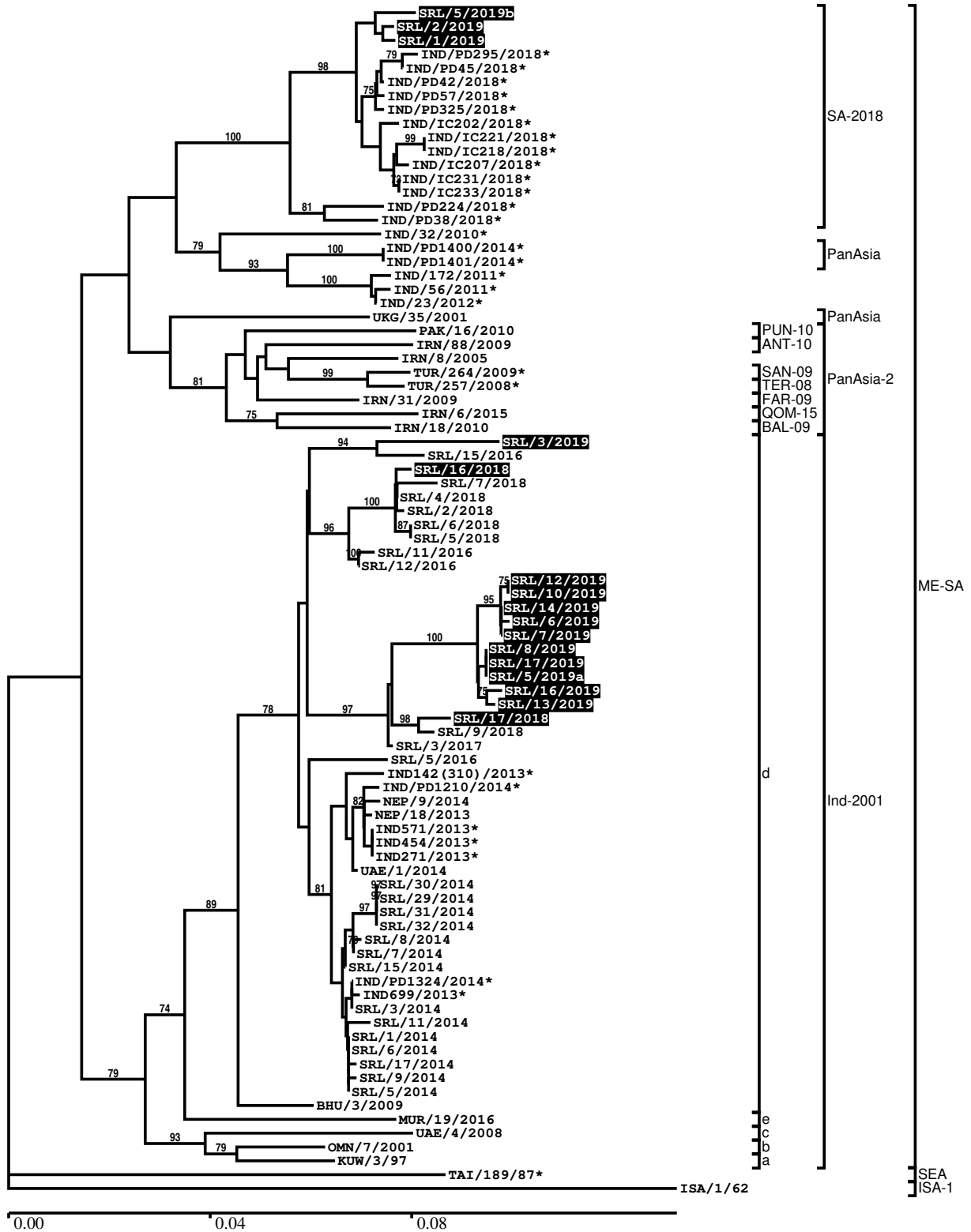
#### Most Closely Related Prototype Sequences

see <http://www.wrlfmd.org/fmdv-genome/fmd-prototype-strains>

sequence	virus name	Host	% Id.	# Ambig.	serotype	topotype	lineage	sublineage
viba_293	BHU/3/2009	cattle	93.0	0	O	ME-SA	Ind-2001	d
viba_541	OMN/7/2001	bovine	92.3	0	O	ME-SA	Ind-2001	b
viba_705	KUW/3/97	bovine	92.1	0	O	ME-SA	Ind-2001	a
viba_30238	MUR/19/2016	cattle	91.5	0	O	ME-SA	Ind-2001	e
viba_397	UAE/4/2008	gazelle	90.4	0	O	ME-SA	Ind-2001	c
viba_285	UKG/35/2001	porcine	88.8	0	O	ME-SA	PanAsia	
viba_354	PAK/16/2010	cattle	88.7	0	O	ME-SA	PanAsia-2	PUN-10
viba_860	IRN/6/2015	cattle	88.6	0	O	ME-SA	PanAsia-2	QOM-15
viba_766	IRN/31/2009	cattle	88.4	0	O	ME-SA	PanAsia-2	FAR-09
viba_666	IRN/18/2010	cattle	88.2	0	O	ME-SA	PanAsia-2	BAL-09

Report on FMDV O in Sri Lanka in 2018, 2019

Batch: WRLFMD/2020/00001C



\*, not a WRLFMD Reference Number

## Analysis Parameters

VP1 subsequence extractor:	vp1_O
Query sequence set:	WRLFMD/2020/00001C-Sri Lanka-O (16 sequences)
Sequence database set:	allseqs_O (5155 sequences)
Prototype sequence set:	!prototypes_O (49 sequences)
Number of related sequences reported:	10
Minimal VP1 subsequence match length	600
Sequence alignment method:	muscle (default parameters)
Sequence alignment length:	636
Phylogeny reconstruction method:	fdnadist, fneighbor
Number of bootstrap samples:	1000
Random seed for bootstrapping:	1
Displaying bootstrap values above:	70.0%
Number of sequences in tree capped at:	100
Number of prototype sequences in tree:	14
VIBASys version:	reflabs-1.1.2

## Sequences in the Phylogenetic Tree

All sequences in the tree are in taxonomic group FMDV/O

label	accession	host(s)	lab	country	taxonomic information
SRL/5/2019b	n/a	cattle	WRLFMD	Sri Lanka	ME-SA/SA-2018
SRL/2/2019	n/a	cattle	WRLFMD	Sri Lanka	ME-SA/SA-2018
SRL/1/2019	n/a	cattle	WRLFMD	Sri Lanka	ME-SA/SA-2018
IND/PD295/2018*	MT919004	cattle	PD-FMD	India	ME-SA/SA-2018
IND/PD45/2018*	MT918997	cattle	PD-FMD	India	ME-SA/SA-2018
IND/PD42/2018*	MT918995	cattle	PD-FMD	India	ME-SA/SA-2018
IND/PD57/2018*	MT918999	water buffalo	PD-FMD	India	ME-SA/SA-2018
IND/PD325/2018*	MT919005	cattle	PD-FMD	India	ME-SA/SA-2018
IND/IC202/2018*	MT936110	cattle	PD-FMD	India	ME-SA/SA-2018
IND/IC221/2018*	MT936114	cattle	PD-FMD	India	ME-SA/SA-2018
IND/IC218/2018*	MT936113	cattle	PD-FMD	India	ME-SA/SA-2018
IND/IC207/2018*	MT936111	cattle	PD-FMD	India	ME-SA/SA-2018
IND/IC231/2018*	MT936115	cattle	PD-FMD	India	ME-SA/SA-2018
IND/IC233/2018*	MT936116	cattle	PD-FMD	India	ME-SA/SA-2018
IND/PD224/2018*	MT919002	cattle	PD-FMD	India	ME-SA/SA-2018
IND/PD38/2018*	MT918994	cattle	PD-FMD	India	ME-SA/SA-2018
IND/32/2010*	KC506435	cattle	PD-FMD	India	ME-SA
IND/PD1400/2014*	MT909601	cattle	PD-FMD	India	ME-SA/PanAsia
IND/PD1401/2014*	MT909602	cattle	PD-FMD	India	ME-SA/PanAsia
IND/172/2011*	KC506438	cattle	PD-FMD	India	ME-SA
IND/56/2011*	KC506443	cattle	PD-FMD	India	ME-SA
IND/23/2012*	KC506439	cattle	PD-FMD	India	ME-SA
UKG/35/2001	AJ539141	porcine	PIADC	United Kingdom	ME-SA/PanAsia
PAK/16/2010	KY091285	cattle	WRLFMD	Pakistan	ME-SA/PanAsia-2/PUN-10
IRN/88/2009	KY091282	n/a	WRLFMD	Iran	ME-SA/PanAsia-2/ANT-10
IRN/8/2005	KY091281	ovine	WRLFMD	Iran	ME-SA/PanAsia-2
TUR/264/2009*	n/a	n/a	FMDI-Ankara	Turkey	ME-SA/PanAsia-2/SAN-09
TUR/257/2008*	n/a	n/a	FMDI-Ankara	Turkey	ME-SA/PanAsia-2/TER-08
IRN/31/2009	KY091284	cattle	WRLFMD	Iran	ME-SA/PanAsia-2/FAR-09
IRN/6/2015	MN276044	cattle	WRLFMD	Iran	ME-SA/PanAsia-2/QOM-15
IRN/18/2010	KY091283	cattle	WRLFMD	Iran	ME-SA/PanAsia-2/BAL-09
SRL/3/2019	n/a	cattle	WRLFMD	Sri Lanka	ME-SA/Ind-2001/d
SRL/15/2016	n/a	cattle	WRLFMD	Sri Lanka	ME-SA/Ind-2001/d
SRL/16/2018	n/a	cattle	WRLFMD	Sri Lanka	ME-SA/Ind-2001/d
SRL/7/2018	n/a	cattle	WRLFMD	Sri Lanka	ME-SA/Ind-2001/d

*continued on next page*

label	accession	host(s)	lab	country	taxonomic information
SRL/4/2018	n/a	cattle	WRLFMD	Sri Lanka	ME-SA/Ind-2001/d
SRL/2/2018	n/a	cattle	WRLFMD	Sri Lanka	ME-SA/Ind-2001/d
SRL/6/2018	n/a	cattle	WRLFMD	Sri Lanka	ME-SA/Ind-2001/d
SRL/5/2018	n/a	cattle	WRLFMD	Sri Lanka	ME-SA/Ind-2001/d
SRL/11/2016	n/a	cattle	WRLFMD	Sri Lanka	ME-SA/Ind-2001/d
SRL/12/2016	n/a	cattle	WRLFMD	Sri Lanka	ME-SA/Ind-2001/d
SRL/12/2019	n/a	porcine	WRLFMD	Sri Lanka	ME-SA/Ind-2001/d
SRL/10/2019	n/a	cattle	WRLFMD	Sri Lanka	ME-SA/Ind-2001/d
SRL/14/2019	n/a	cattle	WRLFMD	Sri Lanka	ME-SA/Ind-2001/d
SRL/6/2019	n/a	cattle	WRLFMD	Sri Lanka	ME-SA/Ind-2001/d
SRL/7/2019	n/a	cattle	WRLFMD	Sri Lanka	ME-SA/Ind-2001/d
SRL/8/2019	n/a	cattle	WRLFMD	Sri Lanka	ME-SA/Ind-2001/d
SRL/17/2019	n/a	cattle	WRLFMD	Sri Lanka	ME-SA/Ind-2001/d
SRL/5/2019a	n/a	cattle	WRLFMD	Sri Lanka	ME-SA/Ind-2001/d
SRL/16/2019	n/a	cattle	WRLFMD	Sri Lanka	ME-SA/Ind-2001/d
SRL/13/2019	n/a	cattle	WRLFMD	Sri Lanka	ME-SA/Ind-2001/d
SRL/17/2018	n/a	cattle	WRLFMD	Sri Lanka	ME-SA/Ind-2001/d
SRL/9/2018	n/a	cattle	WRLFMD	Sri Lanka	ME-SA/Ind-2001/d
SRL/3/2017	n/a	cattle	WRLFMD	Sri Lanka	ME-SA/Ind-2001/d
SRL/5/2016	n/a	cattle	WRLFMD	Sri Lanka	ME-SA/Ind-2001/d
IND142(310)/2013*	KJ825801	cattle	PD-FMD	India	ME-SA/Ind-2001/d
IND/PD1210/2014*	MT909589	cattle	PD-FMD	India	ME-SA/Ind-2001/d
NEP/9/2014	KM921868	cattle	WRLFMD	Nepal	ME-SA/Ind-2001/d
NEP/18/2013	KM921860	porcine	WRLFMD	Nepal	ME-SA/Ind-2001/d
IND571/2013*	KX228160	cattle	PD-FMD	India	ME-SA/Ind-2001/d
IND454/2013*	KX228159	cattle	PD-FMD	India	ME-SA/Ind-2001/d
IND271/2013*	KX228161	cattle	PD-FMD	India	ME-SA/Ind-2001/d
UAE/1/2014	KM921877	gazelle	WRLFMD	United Arab Emirates	ME-SA/Ind-2001/d
SRL/30/2014	MF947489	water buffalo	WRLFMD	Sri Lanka	ME-SA/Ind-2001/d
SRL/29/2014	MF947488	water buffalo	WRLFMD	Sri Lanka	ME-SA/Ind-2001/d
SRL/31/2014	MF947490	water buffalo	WRLFMD	Sri Lanka	ME-SA/Ind-2001/d
SRL/32/2014	MF947491	water buffalo	WRLFMD	Sri Lanka	ME-SA/Ind-2001/d
SRL/8/2014	MF947480	bovine	WRLFMD	Sri Lanka	ME-SA/Ind-2001/d
SRL/7/2014	MF947479	bovine	WRLFMD	Sri Lanka	ME-SA/Ind-2001/d
SRL/15/2014	MF947483	bovine	WRLFMD	Sri Lanka	ME-SA/Ind-2001/d
IND/PD1324/2014*	MT909595	cattle	PD-FMD	India	ME-SA/Ind-2001/d
IND699/2013*	KP835578	Indian elephant	PD-FMD	India	ME-SA/Ind-2001/d
SRL/3/2014	MF947476	bovine	WRLFMD	Sri Lanka	ME-SA/Ind-2001/d
SRL/11/2014	MF947482	porcine	WRLFMD	Sri Lanka	ME-SA/Ind-2001/d
SRL/1/2014	MF947474	bovine	WRLFMD	Sri Lanka	ME-SA/Ind-2001/d
SRL/6/2014	MF947478	bovine	WRLFMD	Sri Lanka	ME-SA/Ind-2001/d
SRL/17/2014	MF947485	bovine	WRLFMD	Sri Lanka	ME-SA/Ind-2001/d
SRL/9/2014	MF947481	bovine	WRLFMD	Sri Lanka	ME-SA/Ind-2001/d
SRL/5/2014	MF947477	bovine	WRLFMD	Sri Lanka	ME-SA/Ind-2001/d
BHU/3/2009	KM921814	cattle	WRLFMD	Bhutan	ME-SA/Ind-2001/d
MUR/19/2016	MG972510	cattle	WRLFMD	Mauritius	ME-SA/Ind-2001/e
UAE/4/2008	KM921876	gazelle	WRLFMD	United Arab Emirates	ME-SA/Ind-2001/c
OMN/7/2001	DQ164941	bovine	WRLFMD	Oman	ME-SA/Ind-2001/b
KUW/3/97	DQ164904	bovine	WRLFMD	Kuwait	ME-SA/Ind-2001/a
TAI/189/87*	KY091288	bovine	TRRL	Thailand	SEA
ISA/1/62	AJ303500	n/a	WRLFMD	Indonesia	ISA-1

\*, not a WRLFMD Reference Number

n/a, not available