

# FAO World Reference Laboratory for Foot-and-Mouth Disease (WRLFMD)

## Genotyping Report

FMDV serotype: O  
Country: Thailand  
Year: 2018  
Batch: WRLFMD/2019/00030  
No. of sequences: 4  
Report date: 23rd September 2019  
Report generated by: Nick Knowles  
Report checked by: Jemma Wadsworth



Copyright © 2019 The Pirbright Institute, Ash Road, Pirbright, Woking GU24 0NF, United Kingdom.

www: <http://www.wrlfmd.org/>

email: [reporting@pirbright.ac.uk](mailto:reporting@pirbright.ac.uk)

The contents of this report should not be reproduced without permission.

Virus sample name:	TAI/12/2018
Sender reference:	169/18
Location of origin:	Songkhla
Country of origin:	Thailand
Date of collection:	20/11/2018
Host species:	cattle
Serotype:	O
Topotype:	ME-SA
Lineage:	Ind-2001
Sublineage:	e
Sequence length:	633
Ambiguities:	0
Material submitted for sequencing:	BTy1
Harvest date of material:	14/09/2019
Primers:	O-1C244F/EUR-2B52R; FMD-3161F/FMD-4303R
Received for sequencing:	18/09/2019
Created:	23/09/2019
Last updated:	23/09/2019
VIBASys IDs: sample 42756, genome 42757, sequence viba_42758, sequencing info 42759	

### Most Closely Related Sequences

sequence	virus name	Host	% Id.	# Ambig.	serotype	topotype	lineage	sublineage
viba_42762	TAI/13/2018	cattle	99.7	0	O	ME-SA	Ind-2001	e
viba_42770	TAI/15/2018	cattle	99.5	0	O	ME-SA	Ind-2001	e
viba_31595	Zabaikalskiy/3/RUS/2016	cattle	97.9	0	O	ME-SA	Ind-2001	e
viba_31082	BAN/GKa-236(pig)/2015	porcine	97.8	0	O	ME-SA	Ind-2001	e
viba_30859	Zabaikalskiy/2/RUS/2016	cattle	97.8	0	O	ME-SA	Ind-2001	e
viba_31573	170206/SKR/2017	cattle	97.8	0	O	ME-SA	Ind-2001	e
viba_30855	Zabaikalskiy/1/RUS/2016	cattle	97.8	0	O	ME-SA	Ind-2001	e
viba_32128	XJPS/CHA/2017		97.8	0	O	ME-SA	Ind-2001	e
viba_34872	MOG/BU/2-7/2015	cattle	97.6	1	O	ME-SA	Ind-2001	e
viba_37025	XJ/CHA/2017	cattle	97.6	0	O	ME-SA	Ind-2001	e

### Most Closely Related Prototype Sequences

see [http://www.wrlfmd.org/fmd\\_genotyping/prototypes.htm](http://www.wrlfmd.org/fmd_genotyping/prototypes.htm)

sequence	virus name	Host	% Id.	# Ambig.	serotype	topotype	lineage	sublineage
viba_30238	MUR/19/2016	cattle	97.0	0	O	ME-SA	Ind-2001	e
viba_293	BHU/3/2009	cattle	93.2	0	O	ME-SA	Ind-2001	d
viba_541	OMN/7/2001	bovine	92.6	0	O	ME-SA	Ind-2001	b
viba_705	KUW/3/97	bovine	91.6	0	O	ME-SA	Ind-2001	a
viba_397	UAE/4/2008	gazelle	89.4	0	O	ME-SA	Ind-2001	c
viba_359	Manisa/TUR/69		88.6	0	O	ME-SA		
viba_285	UKG/35/2001	porcine	88.2	0	O	ME-SA	PanAsia	
viba_505	TUR/264/2009		87.9	0	O	ME-SA	PanAsia-2	SAN-09
viba_650	IRN/8/2005	ovine	87.5	0	O	ME-SA	PanAsia-2	
viba_766	IRN/31/2009	cattle	87.5	0	O	ME-SA	PanAsia-2	FAR-09

Virus sample name:	TAI/13/2018
Sender reference:	181/18
Location of origin:	Nakhon Sri Thummaratch
Country of origin:	Thailand
Date of collection:	29/11/2018
Host species:	cattle
Serotype:	O
Topotype:	ME-SA
Lineage:	Ind-2001
Sublineage:	e
Sequence length:	633
Ambiguities:	0
Material submitted for sequencing:	BTy1
Harvest date of material:	14/09/2019
Primers:	O-1C244F/EUR-2B52R; FMD-3161F/FMD-4303R
Received for sequencing:	18/09/2019
Created:	23/09/2019
Last updated:	23/09/2019
VIBASys IDs: sample 42760, genome 42761, sequence viba_42762, sequencing info 42763	

#### Most Closely Related Sequences

sequence	virus name	Host	% Id.	# Ambig.	serotype	topotype	lineage	sublineage
viba_42770	TAI/15/2018	cattle	99.8	0	O	ME-SA	Ind-2001	e
viba_42758	TAI/12/2018	cattle	99.7	0	O	ME-SA	Ind-2001	e
viba_31595	Zabaikalskiy/3/RUS/2016	cattle	98.3	0	O	ME-SA	Ind-2001	e
viba_31082	BAN/GKa-236(pig)/2015	porcine	98.1	0	O	ME-SA	Ind-2001	e
viba_30859	Zabaikalskiy/2/RUS/2016	cattle	98.1	0	O	ME-SA	Ind-2001	e
viba_31573	170206/SKR/2017	cattle	98.1	0	O	ME-SA	Ind-2001	e
viba_30855	Zabaikalskiy/1/RUS/2016	cattle	98.1	0	O	ME-SA	Ind-2001	e
viba_32128	XJPS/CHA/2017		98.1	0	O	ME-SA	Ind-2001	e
viba_34872	MOG/BU/2-7/2015	cattle	97.9	1	O	ME-SA	Ind-2001	e
viba_37025	XJ/CHA/2017	cattle	97.9	0	O	ME-SA	Ind-2001	e

#### Most Closely Related Prototype Sequences

see [http://www.wrlfmd.org/fmd\\_genotyping/prototypes.htm](http://www.wrlfmd.org/fmd_genotyping/prototypes.htm)

sequence	virus name	Host	% Id.	# Ambig.	serotype	topotype	lineage	sublineage
viba_30238	MUR/19/2016	cattle	97.3	0	O	ME-SA	Ind-2001	e
viba_293	BHU/3/2009	cattle	93.4	0	O	ME-SA	Ind-2001	d
viba_541	OMN/7/2001	bovine	92.7	0	O	ME-SA	Ind-2001	b
viba_705	KUW/3/97	bovine	91.8	0	O	ME-SA	Ind-2001	a
viba_397	UAE/4/2008	gazelle	89.6	0	O	ME-SA	Ind-2001	c
viba_359	Manisa/TUR/69		88.8	0	O	ME-SA		
viba_285	UKG/35/2001	porcine	88.3	0	O	ME-SA	PanAsia	
viba_505	TUR/264/2009		88.0	0	O	ME-SA	PanAsia-2	SAN-09
viba_650	IRN/8/2005	ovine	87.7	0	O	ME-SA	PanAsia-2	
viba_766	IRN/31/2009	cattle	87.7	0	O	ME-SA	PanAsia-2	FAR-09

Virus sample name:	TAI/14/2018
Sender reference:	192/18
Location of origin:	Nakhon Sri Thummaratch
Country of origin:	Thailand
Date of collection:	03/12/2018
Host species:	cattle
Serotype:	O
Topotype:	SEA
Lineage:	Mya-98
Sublineage:	
Sequence length:	633
Ambiguities:	0
Material submitted for sequencing:	BTy1
Harvest date of material:	14/09/2019
Primers:	O-1C244F/EUR-2B52R; FMD-3161F/FMD-4303R
Received for sequencing:	18/09/2019
Created:	23/09/2019
Last updated:	23/09/2019
VIBASys IDs: sample 42764, genome 42765, sequence viba_42766, sequencing info 42767	

#### Most Closely Related Sequences

sequence	virus name	Host	% Id.	# Ambig.	serotype	topotype	lineage	sublineage
viba_31484	VIT/15/2016	water buffalo	97.8	0	O	SEA	Mya-98	
viba_31488	VIT/17/2016	cattle	97.8	0	O	SEA	Mya-98	
viba_26288	TAI/22/2015	water buffalo	97.6	0	O	SEA	Mya-98	
viba_33981	TAI/51/2016	cattle	97.6	0	O	SEA	Mya-98	
viba_36432	VIT/1/2017	water buffalo	97.6	0	O	SEA	Mya-98	
viba_25518	MYA/1/2015	bovine	97.5	0	O	SEA	Mya-98	
viba_30522	TAI/35/2016	cattle	97.5	0	O	SEA	Mya-98	
viba_33945	TAI/42/2016	cattle	97.5	0	O	SEA	Mya-98	
viba_30502	TAI/30/2016	cattle	97.5	0	O	SEA	Mya-98	
viba_30498	TAI/26/2016	cattle	97.5	0	O	SEA	Mya-98	

#### Most Closely Related Prototype Sequences

see [http://www.wrlfmd.org/fmd\\_genotyping/prototypes.htm](http://www.wrlfmd.org/fmd_genotyping/prototypes.htm)

sequence	virus name	Host	% Id.	# Ambig.	serotype	topotype	lineage	sublineage
viba_199	MYA/7/98	bovine	92.4	0	O	SEA	Mya-98	
viba_68	TAI/189/87	bovine	88.7	0	O	SEA		
viba_491	TUR/257/2008		84.7	0	O	ME-SA	PanAsia-2	TER-08
viba_766	IRN/31/2009	cattle	84.3	0	O	ME-SA	PanAsia-2	FAR-09
viba_719	IRN/88/2009		84.1	0	O	ME-SA	PanAsia-2	ANT-10
viba_505	TUR/264/2009		83.9	0	O	ME-SA	PanAsia-2	SAN-09
viba_650	IRN/8/2005	ovine	83.8	0	O	ME-SA	PanAsia-2	
viba_694	CAM/3/98	bovine	83.7	0	O	SEA	Cam-94	
viba_576	IND/R2/75		83.6	0	O	ME-SA		
viba_354	PAK/16/2010	cattle	83.6	0	O	ME-SA	PanAsia-2	PUN-10

Virus sample name:	TAI/15/2018
Sender reference:	200/18
Location of origin:	Nakhon Sri Thummaratch
Country of origin:	Thailand
Date of collection:	07/12/2018
Host species:	cattle
Serotype:	O
Topotype:	ME-SA
Lineage:	Ind-2001
Sublineage:	e
Sequence length:	633
Ambiguities:	0
Material submitted for sequencing:	BTy1
Harvest date of material:	14/09/2019
Primers:	O-1C244F/EUR-2B52R; FMD-3161F/FMD-4303R
Received for sequencing:	18/09/2019
Created:	23/09/2019
Last updated:	23/09/2019

VIBASys IDs: sample 42768, genome 42769, sequence viba\_42770, sequencing info 42771

#### Most Closely Related Sequences

sequence	virus name	Host	% Id.	# Ambig.	serotype	topotype	lineage	sublineage
viba_42762	TAI/13/2018	cattle	99.8	0	O	ME-SA	Ind-2001	e
viba_42758	TAI/12/2018	cattle	99.5	0	O	ME-SA	Ind-2001	e
viba_31595	Zabaikalskiy/3/RUS/2016	cattle	98.1	0	O	ME-SA	Ind-2001	e
viba_31082	BAN/GKa-236(pig)/2015	porcine	97.9	0	O	ME-SA	Ind-2001	e
viba_30859	Zabaikalskiy/2/RUS/2016	cattle	97.9	0	O	ME-SA	Ind-2001	e
viba_31573	170206/SKR/2017	cattle	97.9	0	O	ME-SA	Ind-2001	e
viba_30855	Zabaikalskiy/1/RUS/2016	cattle	97.9	0	O	ME-SA	Ind-2001	e
viba_32128	XJPS/CHA/2017		97.9	0	O	ME-SA	Ind-2001	e
viba_34872	MOG/BU/2-7/2015	cattle	97.8	1	O	ME-SA	Ind-2001	e
viba_37025	XJ/CHA/2017	cattle	97.8	0	O	ME-SA	Ind-2001	e

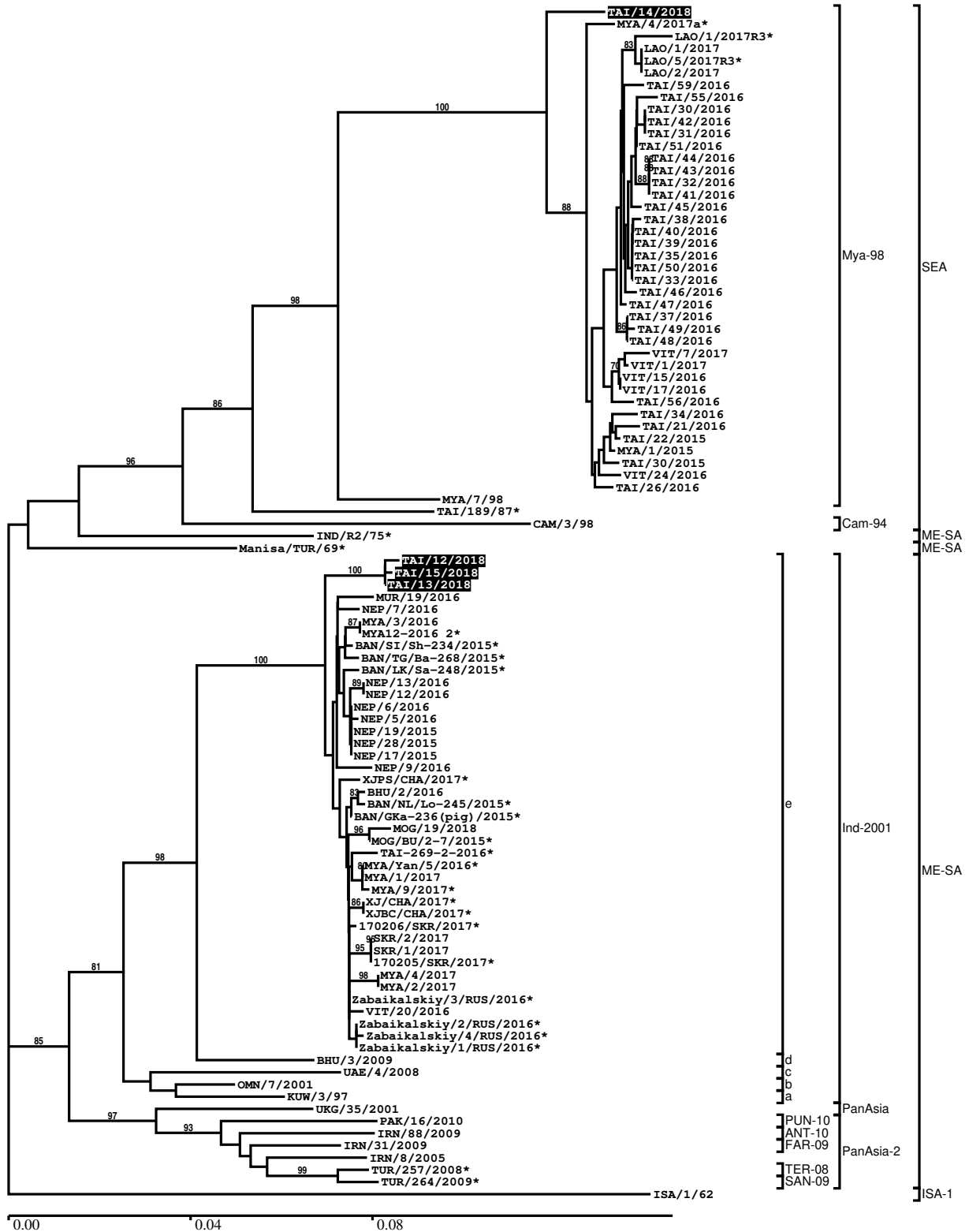
#### Most Closely Related Prototype Sequences

see [http://www.wrlfmd.org/fmd\\_genotyping/prototypes.htm](http://www.wrlfmd.org/fmd_genotyping/prototypes.htm)

sequence	virus name	Host	% Id.	# Ambig.	serotype	topotype	lineage	sublineage
viba_30238	MUR/19/2016	cattle	97.2	0	O	ME-SA	Ind-2001	e
viba_293	BHU/3/2009	cattle	93.2	0	O	ME-SA	Ind-2001	d
viba_541	OMN/7/2001	bovine	92.6	0	O	ME-SA	Ind-2001	b
viba_705	KUW/3/97	bovine	91.6	0	O	ME-SA	Ind-2001	a
viba_397	UAE/4/2008	gazelle	89.4	0	O	ME-SA	Ind-2001	c
viba_359	Manisa/TUR/69		88.6	0	O	ME-SA		
viba_285	UKG/35/2001	porcine	88.2	0	O	ME-SA	PanAsia	
viba_505	TUR/264/2009		87.9	0	O	ME-SA	PanAsia-2	SAN-09
viba_650	IRN/8/2005	ovine	87.5	0	O	ME-SA	PanAsia-2	
viba_766	IRN/31/2009	cattle	87.5	0	O	ME-SA	PanAsia-2	FAR-09

Report on FMDV O in Thailand in 2018

Batch: WRLFMD/2019/00030



\*, not a WRLFMD Reference Number

## Analysis Parameters

VP1 subsequence extractor:	vp1_O
Query sequence set:	WRLFMD/2019/00030-Thailand-O (4 sequences)
Sequence database set:	allseqs_O (4613 sequences)
Prototype sequence set:	!prototypes_O (49 sequences)
Number of related sequences reported:	10
Minimal VP1 subsequence match length	600
Sequence alignment method:	muscle (default parameters)
Sequence alignment length:	636
Phylogeny reconstruction method:	fdnadist, fneighbor
Number of bootstrap samples:	1000
Random seed for bootstrapping:	1
Displaying bootstrap values above:	70.0%
Number of sequences in tree capped at:	100
Number of prototype sequences in tree:	17
VIBASys version:	reflbas-1.1.2

## Sequences in the Phylogenetic Tree

All sequences in the tree are in taxonomic group FMDV/O

label	accession	host(s)	lab	country	taxonomic information
TAI/14/2018	n/a	cattle	WRLFMD	Thailand	SEA/Mya-98
MYA/4/2017a*	n/a	cattle	TRRL	Myanmar	SEA/Mya-98
LAO/1/2017R3*	n/a	n/a	TRRL	Laos	SEA/Mya-98
LAO/1/2017	n/a	cattle	WRLFMD	Laos	SEA/Mya-98
LAO/5/2017R3*	n/a	n/a	TRRL	Laos	SEA/Mya-98
LAO/2/2017	n/a	cattle	WRLFMD	Laos	SEA/Mya-98
TAI/59/2016	n/a	cattle	WRLFMD	Thailand	SEA/Mya-98
TAI/55/2016	n/a	cattle	WRLFMD	Thailand	SEA/Mya-98
TAI/30/2016	n/a	cattle	WRLFMD	Thailand	SEA/Mya-98
TAI/42/2016	n/a	cattle	WRLFMD	Thailand	SEA/Mya-98
TAI/31/2016	n/a	cattle	WRLFMD	Thailand	SEA/Mya-98
TAI/51/2016	n/a	cattle	WRLFMD	Thailand	SEA/Mya-98
TAI/44/2016	n/a	cattle	WRLFMD	Thailand	SEA/Mya-98
TAI/43/2016	n/a	cattle	WRLFMD	Thailand	SEA/Mya-98
TAI/32/2016	n/a	cattle	WRLFMD	Thailand	SEA/Mya-98
TAI/41/2016	n/a	cattle	WRLFMD	Thailand	SEA/Mya-98
TAI/45/2016	n/a	cattle	WRLFMD	Thailand	SEA/Mya-98
TAI/38/2016	n/a	cattle	WRLFMD	Thailand	SEA/Mya-98
TAI/40/2016	n/a	cattle	WRLFMD	Thailand	SEA/Mya-98
TAI/39/2016	n/a	cattle	WRLFMD	Thailand	SEA/Mya-98
TAI/35/2016	n/a	cattle	WRLFMD	Thailand	SEA/Mya-98
TAI/50/2016	n/a	cattle	WRLFMD	Thailand	SEA/Mya-98
TAI/33/2016	n/a	porcine	WRLFMD	Thailand	SEA/Mya-98
TAI/46/2016	n/a	cattle	WRLFMD	Thailand	SEA/Mya-98
TAI/47/2016	n/a	cattle	WRLFMD	Thailand	SEA/Mya-98
TAI/37/2016	n/a	cattle	WRLFMD	Thailand	SEA/Mya-98
TAI/49/2016	n/a	cattle	WRLFMD	Thailand	SEA/Mya-98
TAI/48/2016	n/a	cattle	WRLFMD	Thailand	SEA/Mya-98
VIT/7/2017	n/a	water buffalo	WRLFMD	Vietnam	SEA/Mya-98
VIT/1/2017	n/a	water buffalo	WRLFMD	Vietnam	SEA/Mya-98
VIT/15/2016	n/a	water buffalo	WRLFMD	Vietnam	SEA/Mya-98
VIT/17/2016	n/a	cattle	WRLFMD	Vietnam	SEA/Mya-98
TAI/56/2016	n/a	cattle	WRLFMD	Thailand	SEA/Mya-98
TAI/34/2016	n/a	cattle	WRLFMD	Thailand	SEA/Mya-98
TAI/21/2016	n/a	cattle	WRLFMD	Thailand	SEA/Mya-98
TAI/22/2015	n/a	water buffalo	WRLFMD	Thailand	SEA/Mya-98

*continued on next page*

label	accession	host(s)	lab	country	taxonomic information
MYA/1/2015	n/a	bovine	WRLFMD	Myanmar	SEA/Mya-98
TAI/30/2015	n/a	cattle	WRLFMD	Thailand	SEA/Mya-98
VIT/24/2016	n/a	bovine	WRLFMD	Vietnam	SEA/Mya-98
TAI/26/2016	n/a	cattle	WRLFMD	Thailand	SEA/Mya-98
MYA/7/98	DQ164925	bovine	WRLFMD	Myanmar	SEA/Mya-98
TAI/189/87*	KY091288	bovine	TRRL	Thailand	SEA
CAM/3/98	AJ294910	bovine	WRLFMD	Cambodia	SEA/Cam-94
IND/R2/75*	AF204276	n/a	PD-FMD	India	ME-SA
Manisa/TUR/69*	AY593823	n/a	PIADC	Turkey	ME-SA
TAI/12/2018	n/a	cattle	WRLFMD	Thailand	ME-SA/Ind-2001/e
TAI/15/2018	n/a	cattle	WRLFMD	Thailand	ME-SA/Ind-2001/e
TAI/13/2018	n/a	cattle	WRLFMD	Thailand	ME-SA/Ind-2001/e
MUR/19/2016	MG972510	cattle	WRLFMD	Mauritius	ME-SA/Ind-2001/e
NEP/7/2016	KY449055	cattle	WRLFMD	Nepal	ME-SA/Ind-2001/e
MYA/3/2016	MG972516	cattle	WRLFMD	Myanmar	ME-SA/Ind-2001/e
MYA12-2016 2*	n/a	n/a	TRRL	Myanmar	ME-SA/Ind-2001/e
BAN/SI/Sh-234/2015*	KY077610	cattle	Univ Dhaka	Bangladesh	ME-SA/Ind-2001/e
BAN/TG/Ba-268/2015*	KY077621	cattle	Univ Dhaka	Bangladesh	ME-SA/Ind-2001/e
BAN/LK/Sa-248/2015*	KY077612	cattle	Univ Dhaka	Bangladesh	ME-SA/Ind-2001/e
NEP/13/2016	MG972561	cattle	WRLFMD	Nepal	ME-SA/Ind-2001/e
NEP/12/2016	MG972560	cattle	WRLFMD	Nepal	ME-SA/Ind-2001/e
NEP/6/2016	KY449054	cattle	WRLFMD	Nepal	ME-SA/Ind-2001/e
NEP/5/2016	KY449053	cattle	WRLFMD	Nepal	ME-SA/Ind-2001/e
NEP/19/2015	KY449051	cattle	WRLFMD	Nepal	ME-SA/Ind-2001/e
NEP/28/2015	KY449052	cattle	WRLFMD	Nepal	ME-SA/Ind-2001/e
NEP/17/2015	KY449050	cattle	WRLFMD	Nepal	ME-SA/Ind-2001/e
NEP/9/2016	MG972557	porcine	WRLFMD	Nepal	ME-SA/Ind-2001/e
XJPS/CHA/2017*	KY696707	n/a	LVRI	China	ME-SA/Ind-2001/e
BHU/2/2016	MG972480	cattle	WRLFMD	Bhutan	ME-SA/Ind-2001/e
BAN/NL/Lo-245/2015*	KY077611	cattle	Univ Dhaka	Bangladesh	ME-SA/Ind-2001/e
BAN/GKa-236(pig)/2015*	KX712091	porcine	Univ Dhaka	Bangladesh	ME-SA/Ind-2001/e
MOG/19/2018	n/a	sheep	WRLFMD	Mongolia	ME-SA/Ind-2001/e
MOG/BU/2-7/2015*	LC320038	cattle	NIAH-Japan	Mongolia	ME-SA/Ind-2001/e
TAI-269-2-2016*	MG972602	cattle	TRRL	Thailand	ME-SA/Ind-2001/e
MYA/Yan/5/2016*	LC438823	cattle	NIAH-Japan	Myanmar	ME-SA/Ind-2001/e
MYA/1/2017	MG972517	cattle	WRLFMD	Myanmar	ME-SA/Ind-2001/e
MYA/9/2017*	MG972523	cattle	TRRL	Myanmar	ME-SA/Ind-2001/e
XJ/CHA/2017*	MF461724	cattle	LVRI	China	ME-SA/Ind-2001/e
XJBC/CHA/2017*	KY696708	n/a	LVRI	China	ME-SA/Ind-2001/e
170206/SKR/2017*	n/a	cattle	QIA	Republic of Korea (South Korea)	ME-SA/Ind-2001/e
SKR/2/2017	MG972600	cattle	WRLFMD	Republic of Korea (South Korea)	ME-SA/Ind-2001/e
SKR/1/2017	MG972599	cattle	WRLFMD	Republic of Korea (South Korea)	ME-SA/Ind-2001/e
170205/SKR/2017*	n/a	cattle	QIA	Republic of Korea (South Korea)	ME-SA/Ind-2001/e
MYA/4/2017	MG972519	cattle	WRLFMD	Myanmar	ME-SA/Ind-2001/e
MYA/2/2017	MG972518	cattle	WRLFMD	Myanmar	ME-SA/Ind-2001/e
Zabaikalskiy/3/RUS/2016*	MG972584	cattle	ARRIAH	Russia	ME-SA/Ind-2001/e
VIT/20/2016	MG972619	cattle	WRLFMD	Vietnam	ME-SA/Ind-2001/e
Zabaikalskiy/2/RUS/2016*	MG972583	cattle	ARRIAH	Russia	ME-SA/Ind-2001/e
Zabaikalskiy/4/RUS/2016*	MG972585	cattle	ARRIAH	Russia	ME-SA/Ind-2001/e
Zabaikalskiy/1/RUS/2016*	MG983720	cattle	ARRIAH	Russia	ME-SA/Ind-2001/e
BHU/3/2009	KM921814	cattle	WRLFMD	Bhutan	ME-SA/Ind-2001/d
UAE/4/2008	KM921876	gazelle	WRLFMD	United Arab Emirates	ME-SA/Ind-2001/c
OMN/7/2001	DQ164941	bovine	WRLFMD	Oman	ME-SA/Ind-2001/b
KUW/3/97	DQ164904	bovine	WRLFMD	Kuwait	ME-SA/Ind-2001/a
UKG/35/2001	AJ539141	porcine	PIADC	United Kingdom	ME-SA/PanAsia
PAK/16/2010	KY091285	cattle	WRLFMD	Pakistan	ME-SA/PanAsia-2/PUN-10
IRN/88/2009	KY091282	n/a	WRLFMD	Iran	ME-SA/PanAsia-2/ANT-10

continued on next page



---

label	accession	host(s)	lab	country	taxonomic information
IRN/31/2009	KY091284	cattle	WRLFMD	Iran	ME-SA/PanAsia-2/FAR-09
IRN/8/2005	KY091281	ovine	WRLFMD	Iran	ME-SA/PanAsia-2
TUR/257/2008*	n/a	n/a	FMDI-Ankara	Turkey	ME-SA/PanAsia-2/TER-08
TUR/264/2009*	n/a	n/a	FMDI-Ankara	Turkey	ME-SA/PanAsia-2/SAN-09
ISA/1/62	AJ303500	n/a	WRLFMD	Indonesia	ISA-1

\*, not a WRLFMD Reference Number

n/a, not available