

FAO World Reference Laboratory for Foot-and-Mouth Disease (WRLFMD)

Genotyping Report

FMDV serotype: O
Country: Palestinian AT
Year: 2018
Batch: WRLFMD/2019/00006
No. of sequences: 1
Report date: 2nd February 2019
Report generated by: Nick Knowles
Report checked by: Jemma Wadsworth



Copyright © 2019 The Pirbright Institute, Ash Road, Pirbright, Woking GU24 0NF, United Kingdom.

www: <http://www.wrlfmd.org/>

email: reporting@pirbright.ac.uk

The contents of this report should not be reproduced without permission.

Virus sample name:	PAT/1/2018
Sender reference:	326215 (47)
Location of origin:	Hebron
Country of origin:	Palestinian AT
Date of collection:	29/07/2018
Host species:	sheep
Serotype:	O
Topotype:	EA-3
Lineage:	
Sublineage:	
Sequence length:	633
Ambiguities:	0
Material submitted for sequencing:	BTy1
Harvest date of material:	23/01/2019
Primers:	O-1C244F/EUR-2B52R; O-1C272F/EUR-2B52R; FMD-3161F/FMD-4303R
Received for sequencing:	31/01/2019
Created:	02/02/2019
Last updated:	02/02/2019
VIBASys IDs: sample 39433, genome 39434, sequence viba_39435, sequencing info 39436	

Most Closely Related Sequences

sequence	virus name	Host	% Id.	# Ambig.	serotype	topotype	lineage	sublineage
viba_35671	PAT/12/2017	sheep	100.0	0	O		EA-3	
viba_35667	PAT/11/2017	sheep	100.0	0	O		EA-3	
viba_33716	West Bank/PAT/2017	sheep	100.0	0	O		EA-3	
viba_35740	ISR/15/2017	cattle	99.7	0	O		EA-3	
viba_35679	PAT/14/2017	cattle	99.7	0	O		EA-3	
viba_34020	Yatta-Kraisah/PAT/2017	cattle	99.7	0	O		EA-3	
viba_35675	PAT/13/2017	cattle	99.7	0	O		EA-3	
viba_34015	Ayn al-Sahla/ISR/2017	cattle	99.7	0	O		EA-3	
viba_35748	ISR/17/2017	cattle	99.7	0	O		EA-3	
viba_34036	Bani Na'im/PAT/2017 C	sheep	99.5	0	O		EA-3	

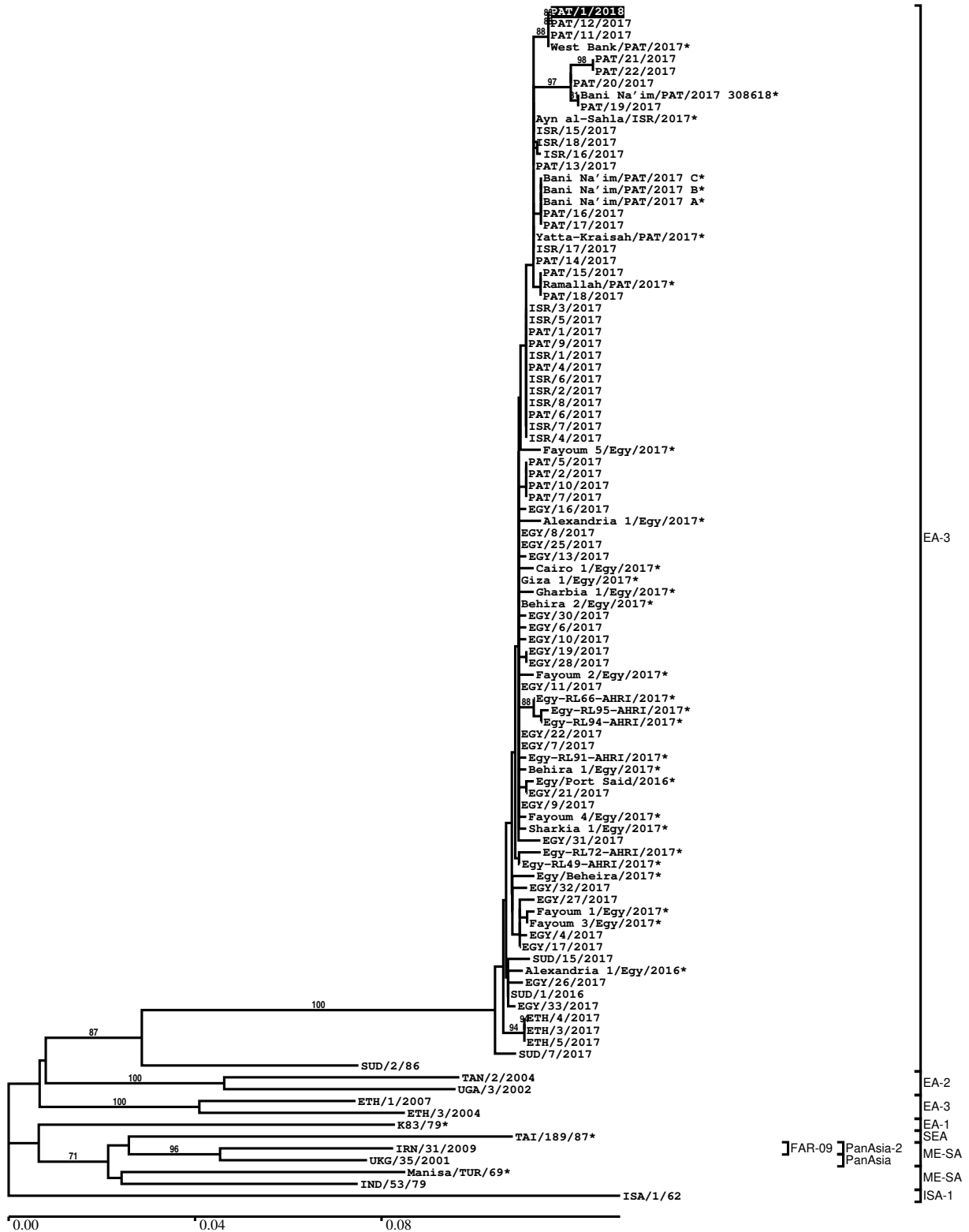
Most Closely Related Prototype Sequences

see http://www.wrlfmd.org/fmd_genotyping/prototypes.htm

sequence	virus name	Host	% Id.	# Ambig.	serotype	topotype	lineage	sublineage
viba_116	SUD/2/86	bovine	88.3	0	O		EA-3	
viba_854	ETH/1/2007	cattle	84.5	0	O		EA-3	
viba_408	ETH/3/2004	cattle	84.5	0	O		EA-3	
viba_617	IND/53/79	bovine	84.1	0	O		ME-SA	
viba_285	UKG/35/2001	porcine	83.9	0	O		ME-SA	PanAsia
viba_359	Manisa/TUR/69		83.6	0	O		ME-SA	
viba_85	UGA/3/2002		83.5	0	O		EA-2	
viba_766	IRN/31/2009	cattle	83.5	0	O		ME-SA	PanAsia-2 FAR-09
viba_263	TAN/2/2004	bovine	83.5	0	O		EA-2	
viba_523	K83/79		83.4	0	O		EA-1	

Report on FMDV O in Palestinian AT in 2018

Batch: WRLFMD/2019/00006



*, not a WRLFMD Reference Number

Analysis Parameters

VP1 subsequence extractor:	vp1_O
Query sequence set:	WRLFMD/2019/00006-Palestinian AT-O (1 sequences)
Sequence database set:	allseqs_O (4185 sequences)
Prototype sequence set:	!prototypes_O (49 sequences)
Number of related sequences reported:	10
Minimal VP1 subsequence match length	600
Sequence alignment method:	muscle (default parameters)
Sequence alignment length:	636
Phylogeny reconstruction method:	fdnadist, fneighbor
Number of bootstrap samples:	1000
Random seed for bootstrapping:	1
Displaying bootstrap values above:	70.0%
Number of sequences in tree capped at:	100
Number of prototype sequences in tree:	10
VIBASys version:	reflabs-1.1.2

Sequences in the Phylogenetic Tree

All sequences in the tree are in taxonomic group FMDV/O

label	accession	host(s)	lab	country	taxonomic information
PAT/1/2018	n/a	sheep	WRLFMD	Palestinian AT	EA-3
PAT/12/2017	n/a	sheep	WRLFMD	Palestinian AT	EA-3
PAT/11/2017	n/a	sheep	WRLFMD	Palestinian AT	EA-3
West Bank/PAT/2017*	n/a	sheep	KVI	Palestinian AT	EA-3
PAT/21/2017	n/a	cattle	WRLFMD	Palestinian AT	EA-3
PAT/22/2017	n/a	cattle	WRLFMD	Palestinian AT	EA-3
PAT/20/2017	n/a	sheep	WRLFMD	Palestinian AT	EA-3
Bani Na'im/PAT/2017 308618*	n/a	sheep	KVI	Palestinian AT	EA-3
PAT/19/2017	n/a	sheep	WRLFMD	Palestinian AT	EA-3
Ayn al-Sahla/ISR/2017*	n/a	cattle	KVI	Israel	EA-3
ISR/15/2017	n/a	cattle	WRLFMD	Israel	EA-3
ISR/18/2017	n/a	cattle	WRLFMD	Israel	EA-3
ISR/16/2017	n/a	cattle	WRLFMD	Israel	EA-3
PAT/13/2017	n/a	cattle	WRLFMD	Palestinian AT	EA-3
Bani Na'im/PAT/2017 C*	n/a	sheep	KVI	Palestinian AT	EA-3
Bani Na'im/PAT/2017 B*	n/a	sheep	KVI	Palestinian AT	EA-3
Bani Na'im/PAT/2017 A*	n/a	sheep	KVI	Palestinian AT	EA-3
PAT/16/2017	n/a	sheep	WRLFMD	Palestinian AT	EA-3
PAT/17/2017	n/a	sheep	WRLFMD	Palestinian AT	EA-3
Yatta-Kraisah/PAT/2017*	n/a	cattle	KVI	Palestinian AT	EA-3
ISR/17/2017	n/a	cattle	WRLFMD	Israel	EA-3
PAT/14/2017	n/a	cattle	WRLFMD	Palestinian AT	EA-3
PAT/15/2017	n/a	sheep	WRLFMD	Palestinian AT	EA-3
Ramallah/PAT/2017*	n/a	sheep	KVI	Palestinian AT	EA-3
PAT/18/2017	n/a	sheep	WRLFMD	Palestinian AT	EA-3
ISR/3/2017	n/a	cattle	WRLFMD	Israel	EA-3
ISR/5/2017	n/a	cattle	WRLFMD	Israel	EA-3
PAT/1/2017	n/a	cattle	WRLFMD	Palestinian AT	EA-3
PAT/9/2017	n/a	cattle	WRLFMD	Palestinian AT	EA-3
ISR/1/2017	n/a	cattle	WRLFMD	Israel	EA-3
PAT/4/2017	n/a	cattle	WRLFMD	Palestinian AT	EA-3
ISR/6/2017	n/a	cattle	WRLFMD	Israel	EA-3
ISR/2/2017	n/a	cattle	WRLFMD	Israel	EA-3
ISR/8/2017	n/a	cattle	WRLFMD	Israel	EA-3
PAT/6/2017	n/a	cattle	WRLFMD	Palestinian AT	EA-3
ISR/7/2017	n/a	cattle	WRLFMD	Israel	EA-3

continued on next page

label	accession	host(s)	lab	country	taxonomic information
ISR/4/2017	n/a	cattle	WRLFMD	Israel	EA-3
Fayoum 5/Egy/2017*	MF322692	n/a	MEVAC	Egypt	EA-3
PAT/5/2017	n/a	cattle	WRLFMD	Palestinian AT	EA-3
PAT/2/2017	n/a	cattle	WRLFMD	Palestinian AT	EA-3
PAT/10/2017	n/a	cattle	WRLFMD	Palestinian AT	EA-3
PAT/7/2017	n/a	cattle	WRLFMD	Palestinian AT	EA-3
EGY/16/2017	n/a	cattle	WRLFMD	Egypt	EA-3
Alexandria 1/Egy/2017*	MF322681	n/a	MEVAC	Egypt	EA-3
EGY/8/2017	n/a	cattle	WRLFMD	Egypt	EA-3
EGY/25/2017	n/a	cattle	WRLFMD	Egypt	EA-3
EGY/13/2017	n/a	cattle	WRLFMD	Egypt	EA-3
Cairo 1/Egy/2017*	MF322683	n/a	MEVAC	Egypt	EA-3
Giza 1/Egy/2017*	MF322682	n/a	MEVAC	Egypt	EA-3
Gharbia 1/Egy/2017*	MF322685	n/a	MEVAC	Egypt	EA-3
Behira 2/Egy/2017*	MF322687	n/a	MEVAC	Egypt	EA-3
EGY/30/2017	n/a	cattle	WRLFMD	Egypt	EA-3
EGY/6/2017	n/a	cattle	WRLFMD	Egypt	EA-3
EGY/10/2017	n/a	water buffalo	WRLFMD	Egypt	EA-3
EGY/19/2017	n/a	cattle	WRLFMD	Egypt	EA-3
EGY/28/2017	n/a	cattle	WRLFMD	Egypt	EA-3
Fayoum 2/Egy/2017*	MF322689	n/a	MEVAC	Egypt	EA-3
EGY/11/2017	n/a	water buffalo	WRLFMD	Egypt	EA-3
Egy-RL66-AHRI/2017*	MH729317	cattle	AHRI	Egypt	EA-3
Egy-RL95-AHRI/2017*	MH729319	cattle	AHRI	Egypt	EA-3
Egy-RL94-AHRI/2017*	MH729318	cattle	AHRI	Egypt	EA-3
EGY/22/2017	n/a	water buffalo	WRLFMD	Egypt	EA-3
EGY/7/2017	n/a	cattle	WRLFMD	Egypt	EA-3
Egy-RL91-AHRI/2017*	MH729320	cattle	AHRI	Egypt	EA-3
Behira 1/Egy/2017*	MF322686	n/a	MEVAC	Egypt	EA-3
Egy/Port Said/2016*	MG552846	cattle	AHRI	Egypt	EA-3
EGY/21/2017	n/a	cattle	WRLFMD	Egypt	EA-3
EGY/9/2017	n/a	cattle	WRLFMD	Egypt	EA-3
Fayoum 4/Egy/2017*	MF322691	n/a	MEVAC	Egypt	EA-3
Sharkia 1/Egy/2017*	MF322684	n/a	MEVAC	Egypt	EA-3
EGY/31/2017	n/a	cattle	WRLFMD	Egypt	EA-3
Egy-RL72-AHRI/2017*	MH729316	cattle	AHRI	Egypt	EA-3
Egy-RL49-AHRI/2017*	MH729321	water buffalo	AHRI	Egypt	EA-3
Egy/Beheira/2017*	MG552847	cattle	AHRI	Egypt	EA-3
EGY/32/2017	n/a	cattle	WRLFMD	Egypt	EA-3
EGY/27/2017	n/a	cattle	WRLFMD	Egypt	EA-3
Fayoum 1/Egy/2017*	MF322688	n/a	MEVAC	Egypt	EA-3
Fayoum 3/Egy/2017*	MF322690	n/a	MEVAC	Egypt	EA-3
EGY/4/2017	n/a	water buffalo	WRLFMD	Egypt	EA-3
EGY/17/2017	n/a	cattle	WRLFMD	Egypt	EA-3
SUD/15/2017	MK422569	cattle	WRLFMD	Sudan	EA-3
Alexandria 1/Egy/2016*	MF322680	n/a	MEVAC	Egypt	EA-3
EGY/26/2017	n/a	cattle	WRLFMD	Egypt	EA-3
SUD/1/2016	MK422563	cattle	WRLFMD	Sudan	EA-3
EGY/33/2017	n/a	cattle	WRLFMD	Egypt	EA-3
ETH/4/2017	n/a	cattle	WRLFMD	Ethiopia	EA-3
ETH/3/2017	n/a	cattle	WRLFMD	Ethiopia	EA-3
ETH/5/2017	n/a	cattle	WRLFMD	Ethiopia	EA-3
SUD/7/2017	MK422568	cattle	WRLFMD	Sudan	EA-3
SUD/2/86	DQ165075	bovine	WRLFMD	Sudan	EA-3
TAN/2/2004	KF561679	bovine	WRLFMD	Tanzania	EA-2
UGA/3/2002	DQ165077	n/a	WRLFMD	Uganda	EA-2
ETH/1/2007	FJ798137	cattle	WRLFMD	Ethiopia	EA-3
ETH/3/2004	FJ798109	cattle	WRLFMD	Ethiopia	EA-3
K83/79*	AJ303511	n/a	WRLFMD	Kenya	EA-1
TAI/189/87*	KY091288	bovine	TRRL	Thailand	SEA
IRN/31/2009	KY091284	cattle	WRLFMD	Iran	ME-SA/PanAsia-2/FAR-09
UKG/35/2001	AJ539141	porcine	PIADC	United Kingdom	ME-SA/PanAsia
Manisa/TUR/69*	AY593823	n/a	PIADC	Turkey	ME-SA
IND/53/79	AF292107	bovine	PD-FMD	India	ME-SA
ISA/1/62	AJ303500	n/a	WRLFMD	Indonesia	ISA-1

*, not a WRLFMD Reference Number
n/a, not available