

FAO World Reference Laboratory for Foot-and-Mouth Disease (WRLFMD)

Genotyping Report

FMDV serotype: A
Country: Thailand
Year: 2016
Batch: WRLFMD/2016/00031
No. of sequences: 5
Report date: 9th November 2016
Report generated by: Kasia Bankowska
Report checked by: Nick Knowles



Copyright © 2016 The Pirbright Institute, Ash Road, Pirbright, Woking GU24 0NF, United Kingdom.

www: <http://www.wrlfmd.org/>

email: reporting@pirbright.ac.uk

The contents of this report should not be reproduced without permission.

Virus sample name:	TAI/18/2016
Sender reference:	61/16
Location of origin:	Huai Yap, Ban Thi, Lamphun
Country of origin:	Thailand
Date of collection:	09/03/2016
Host species:	cattle
Serotype:	A
Topotype:	ASIA
Lineage:	Sea-97
Sublineage:	
Sequence length:	630
Ambiguities:	0
Material submitted for sequencing:	BTy1
Harvest date of material:	19/10/2016
Primers:	A-1C562F/EUR-2B52R; A-1C612F/EUR-2B52R
Received for sequencing:	07/11/2016
Created:	08/11/2016
Last updated:	08/11/2016
VIBASys IDs: sample 30463, genome 30464, sequence viba_30465, sequencing info 30466	

Most Closely Related Sequences

sequence	virus name	Host	% Id.	# Ambig.	serotype	topotype	lineage	sublineage
viba_23789	TAI/16/2016	cattle	99.5	0	A	ASIA	Sea-97	
viba_23785	TAI/15/2016	cattle	99.5	0	A	ASIA	Sea-97	
viba_23781	TAI/13/2016	cattle	99.5	0	A	ASIA	Sea-97	
viba_23773	TAI/11/2016	cattle	99.5	0	A	ASIA	Sea-97	
viba_30481	TAI/23/2016	cattle	99.5	0	A	ASIA	Sea-97	
viba_26004	TAI/24/2015	cattle	99.4	0	A	ASIA	Sea-97	
viba_22520	TAI/17/2014	cattle	99.4	0	A	ASIA	Sea-97	
viba_23777	TAI/12/2016	cattle	99.4	0	A	ASIA	Sea-97	
viba_23769	TAI/10/2016	cattle	99.4	0	A	ASIA	Sea-97	
viba_23753	TAI/6/2016	cattle	99.4	0	A	ASIA	Sea-97	

Most Closely Related Prototype Sequences

see http://www.wrlfmd.org/fmd_genotyping/prototypes.htm

sequence	virus name	Host	% Id.	# Ambig.	serotype	topotype	lineage	sublineage
viba_122	TAI/7/2003	bovine	93.3	0	A	ASIA	Sea-97	
viba_625	TAI/2/97		89.7	0	A	ASIA	Sea-97	
viba_630	TAI/118/87		87.3	0	A	ASIA	Thai-87	
viba_677	IRQ/24/64	bovine	82.2	0	A	ASIA	A22	
viba_682	IRN/2/87	bovine	81.7	0	A	ASIA	Iran-87	
viba_589	Bangkok/TAI/60		81.3	0	A	ASIA	A15	
viba_791	IRN/125/2010	bovine	80.4	0	A	ASIA	Iran-05	SIS-10
viba_843	SAU/16/95		80.4	0	A	ASIA	G-VII	
viba_486	TUR/3/2010	cattle	80.4	0	A	ASIA	Iran-05	KSS-09
viba_636	IRN/78/2009		80.4	0	A	ASIA	Iran-05	FAR-09

Virus sample name:	TAI/19/2016
Sender reference:	65/16
Location of origin:	Nakhon Si Thammarat, Pak Phanang, Ko Thuat
Country of origin:	Thailand
Date of collection:	18/03/2016
Host species:	cattle
Serotype:	A
Topotype:	ASIA
Lineage:	Sea-97
Sublineage:	
Sequence length:	630
Ambiguities:	0
Material submitted for sequencing:	BTy1
Harvest date of material:	20/10/2016
Primers:	A-1C562F/EUR-2B52R; A-1C612F/EUR-2B52R
Received for sequencing:	07/11/2016
Created:	08/11/2016
Last updated:	08/11/2016

VIBASys IDs: sample 30467, genome 30468, sequence viba_30469, sequencing info 30470

Most Closely Related Sequences

sequence	virus name	Host	% Id.	# Ambig.	serotype	topotype	lineage	sublineage
viba_30473	TAI/20/2016	cattle	99.8	0	A	ASIA	Sea-97	
viba_30477	TAI/22/2016	cattle	99.5	0	A	ASIA	Sea-97	
viba_23789	TAI/16/2016	cattle	98.7	0	A	ASIA	Sea-97	
viba_23785	TAI/15/2016	cattle	98.7	0	A	ASIA	Sea-97	
viba_23781	TAI/13/2016	cattle	98.7	0	A	ASIA	Sea-97	
viba_23773	TAI/11/2016	cattle	98.7	0	A	ASIA	Sea-97	
viba_30481	TAI/23/2016	cattle	98.7	0	A	ASIA	Sea-97	
viba_26004	TAI/24/2015	cattle	98.6	0	A	ASIA	Sea-97	
viba_22520	TAI/17/2014	cattle	98.6	0	A	ASIA	Sea-97	
viba_23777	TAI/12/2016	cattle	98.6	0	A	ASIA	Sea-97	

Most Closely Related Prototype Sequences

see http://www.wrlfmd.org/fmd_genotyping/prototypes.htm

sequence	virus name	Host	% Id.	# Ambig.	serotype	topotype	lineage	sublineage
viba_122	TAI/7/2003	bovine	93.2	0	A	ASIA	Sea-97	
viba_625	TAI/2/97		89.9	0	A	ASIA	Sea-97	
viba_630	TAI/118/87		87.8	0	A	ASIA	Thai-87	
viba_677	IRQ/24/64	bovine	82.7	0	A	ASIA	A22	
viba_682	IRN/2/87	bovine	81.7	0	A	ASIA	Iran-87	
viba_843	SAU/16/95		81.5	0	A	ASIA	G-VII	
viba_589	Bangkok/TAI/60		81.3	0	A	ASIA	A15	
viba_864	IND/40/2000	cattle	80.7	0	A	ASIA	G-VII	
viba_594	IRN/1/2011	bovine	80.7	0	A	ASIA	Iran-05	FAR-11
viba_403	TUR/1/2008	cattle	80.6	0	A	ASIA	Iran-05	ARD-07

Virus sample name:	TAI/20/2016
Sender reference:	72/16
Location of origin:	Hin Tok, Ron Phibun, Nakhon Si Thammarat
Country of origin:	Thailand
Date of collection:	05/04/2016
Host species:	cattle
Serotype:	A
Topotype:	ASIA
Lineage:	Sea-97
Sublineage:	
Sequence length:	630
Ambiguities:	0
Material submitted for sequencing:	BTy1
Harvest date of material:	19/10/2016
Primers:	A-1C562F/EUR-2B52R; A-1C612F/EUR-2B52R
Received for sequencing:	07/11/2016
Created:	08/11/2016
Last updated:	08/11/2016

VIBASys IDs: sample 30471, genome 30472, sequence viba_30473, sequencing info 30474

Most Closely Related Sequences

sequence	virus name	Host	% Id.	# Ambig.	serotype	topotype	lineage	sublineage
viba_30469	TAI/19/2016	cattle	99.8	0	A	ASIA	Sea-97	
viba_30477	TAI/22/2016	cattle	99.7	0	A	ASIA	Sea-97	
viba_23789	TAI/16/2016	cattle	98.9	0	A	ASIA	Sea-97	
viba_23785	TAI/15/2016	cattle	98.9	0	A	ASIA	Sea-97	
viba_23781	TAI/13/2016	cattle	98.9	0	A	ASIA	Sea-97	
viba_23773	TAI/11/2016	cattle	98.9	0	A	ASIA	Sea-97	
viba_30481	TAI/23/2016	cattle	98.9	0	A	ASIA	Sea-97	
viba_26004	TAI/24/2015	cattle	98.7	0	A	ASIA	Sea-97	
viba_22520	TAI/17/2014	cattle	98.7	0	A	ASIA	Sea-97	
viba_23777	TAI/12/2016	cattle	98.7	0	A	ASIA	Sea-97	

Most Closely Related Prototype Sequences

see http://www.wrlfmd.org/fmd_genotyping/prototypes.htm

sequence	virus name	Host	% Id.	# Ambig.	serotype	topotype	lineage	sublineage
viba_122	TAI/7/2003	bovine	93.3	0	A	ASIA	Sea-97	
viba_625	TAI/2/97		90.1	0	A	ASIA	Sea-97	
viba_630	TAI/118/87		88.0	0	A	ASIA	Thai-87	
viba_677	IRQ/24/64	bovine	82.8	0	A	ASIA	A22	
viba_682	IRN/2/87	bovine	81.8	0	A	ASIA	Iran-87	
viba_843	SAU/16/95		81.6	0	A	ASIA	G-VII	
viba_589	Bangkok/TAI/60		81.4	0	A	ASIA	A15	
viba_594	IRN/1/2011	bovine	80.9	0	A	ASIA	Iran-05	FAR-11
viba_864	IND/40/2000	cattle	80.8	0	A	ASIA	G-VII	
viba_475	IRN/22/99		80.7	0	A	ASIA	Iran-99	

Virus sample name:	TAI/22/2016
Sender reference:	78-2/16
Location of origin:	Khuan Nong Hong, Cha-Uat, Nakhon Si Thammarat
Country of origin:	Thailand
Date of collection:	18/04/2016
Host species:	cattle
Serotype:	A
Topotype:	ASIA
Lineage:	Sea-97
Sublineage:	
Sequence length:	630
Ambiguities:	0
Material submitted for sequencing:	BTy1
Harvest date of material:	20/10/2016
Primers:	A-1C562F/EUR-2B52R; A-1C612F/EUR-2B52R
Received for sequencing:	07/11/2016
Created:	08/11/2016
Last updated:	08/11/2016
VIBASys IDs: sample 30475, genome 30476, sequence viba_30477, sequencing info 30478	

Most Closely Related Sequences

sequence	virus name	Host	% Id.	# Ambig.	serotype	topotype	lineage	sublineage
viba_30473	TAI/20/2016	cattle	99.7	0	A	ASIA	Sea-97	
viba_30469	TAI/19/2016	cattle	99.5	0	A	ASIA	Sea-97	
viba_23789	TAI/16/2016	cattle	98.6	0	A	ASIA	Sea-97	
viba_23785	TAI/15/2016	cattle	98.6	0	A	ASIA	Sea-97	
viba_23781	TAI/13/2016	cattle	98.6	0	A	ASIA	Sea-97	
viba_23773	TAI/11/2016	cattle	98.6	0	A	ASIA	Sea-97	
viba_30481	TAI/23/2016	cattle	98.6	0	A	ASIA	Sea-97	
viba_26004	TAI/24/2015	cattle	98.4	0	A	ASIA	Sea-97	
viba_22520	TAI/17/2014	cattle	98.4	0	A	ASIA	Sea-97	
viba_23777	TAI/12/2016	cattle	98.4	0	A	ASIA	Sea-97	

Most Closely Related Prototype Sequences

see http://www.wrlfmd.org/fmd_genotyping/prototypes.htm

sequence	virus name	Host	% Id.	# Ambig.	serotype	topotype	lineage	sublineage
viba_122	TAI/7/2003	bovine	93.0	0	A	ASIA	Sea-97	
viba_625	TAI/2/97		89.7	0	A	ASIA	Sea-97	
viba_630	TAI/118/87		87.6	0	A	ASIA	Thai-87	
viba_677	IRQ/24/64	bovine	82.5	0	A	ASIA	A22	
viba_682	IRN/2/87	bovine	81.5	0	A	ASIA	Iran-87	
viba_843	SAU/16/95		81.3	0	A	ASIA	G-VII	
viba_589	Bangkok/TAI/60		81.1	0	A	ASIA	A15	
viba_594	IRN/1/2011	bovine	80.6	0	A	ASIA	Iran-05	FAR-11
viba_864	IND/40/2000	cattle	80.5	0	A	ASIA	G-VII	
viba_475	IRN/22/99		80.4	0	A	ASIA	Iran-99	

Virus sample name:	TAI/23/2016
Sender reference:	80-4/16
Location of origin:	Huai Yap, Ban Thi, Lamphun
Country of origin:	Thailand
Date of collection:	18/04/2016
Host species:	cattle
Serotype:	A
Topotype:	ASIA
Lineage:	Sea-97
Sublineage:	
Sequence length:	630
Ambiguities:	0
Material submitted for sequencing:	BTy1
Harvest date of material:	21/10/2016
Primers:	A-1C562F/EUR-2B52R; A-1C612F/EUR-2B52R
Received for sequencing:	07/11/2016
Created:	08/11/2016
Last updated:	08/11/2016

VIBASys IDs: sample 30479, genome 30480, sequence viba_30481, sequencing info 30482

Most Closely Related Sequences

sequence	virus name	Host	% Id.	# Ambig.	serotype	topotype	lineage	sublineage
viba_23789	TAI/16/2016	cattle	100.0	0	A	ASIA	Sea-97	
viba_23785	TAI/15/2016	cattle	100.0	0	A	ASIA	Sea-97	
viba_23781	TAI/13/2016	cattle	100.0	0	A	ASIA	Sea-97	
viba_23773	TAI/11/2016	cattle	100.0	0	A	ASIA	Sea-97	
viba_26004	TAI/24/2015	cattle	99.8	0	A	ASIA	Sea-97	
viba_22520	TAI/17/2014	cattle	99.8	0	A	ASIA	Sea-97	
viba_23777	TAI/12/2016	cattle	99.8	0	A	ASIA	Sea-97	
viba_23769	TAI/10/2016	cattle	99.8	0	A	ASIA	Sea-97	
viba_23753	TAI/6/2016	cattle	99.8	0	A	ASIA	Sea-97	
viba_23757	TAI/7/2016	cattle	99.8	0	A	ASIA	Sea-97	

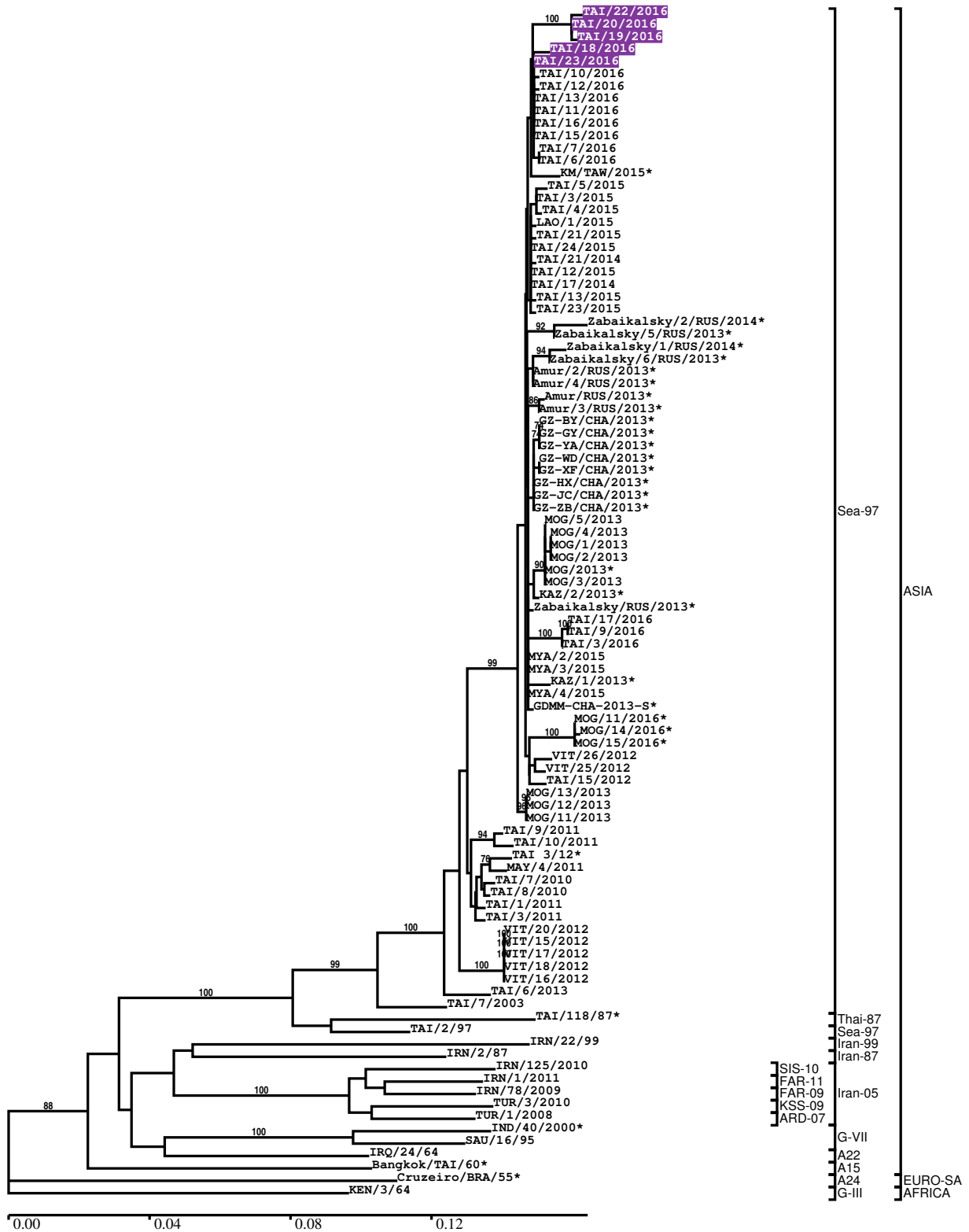
Most Closely Related Prototype Sequences

see http://www.wrlfmd.org/fmd_genotyping/prototypes.htm

sequence	virus name	Host	% Id.	# Ambig.	serotype	topotype	lineage	sublineage
viba_122	TAI/7/2003	bovine	93.8	0	A	ASIA	Sea-97	
viba_625	TAI/2/97		90.2	0	A	ASIA	Sea-97	
viba_630	TAI/118/87		87.8	0	A	ASIA	Thai-87	
viba_677	IRQ/24/64	bovine	82.5	0	A	ASIA	A22	
viba_682	IRN/2/87	bovine	81.9	0	A	ASIA	Iran-87	
viba_589	Bangkok/TAI/60		81.1	0	A	ASIA	A15	
viba_843	SAU/16/95		80.7	0	A	ASIA	G-VII	
viba_594	IRN/1/2011	bovine	80.7	0	A	ASIA	Iran-05	FAR-11
viba_403	TUR/1/2008	cattle	80.6	0	A	ASIA	Iran-05	ARD-07
viba_785	KEN/3/64		80.6	0	A	AFRICA	G-III	

Report on FMDV A in Thailand in 2016

Batch: WRLFMD/2016/00031



*, not a WRLFMD Reference Number

Analysis Parameters

VP1 subsequence extractor:	vp1_A
Query sequence set:	WRLFMD/2016/00031-Thailand-A (5 sequences)
Sequence database set:	allseqs_A (1546 sequences)
Prototype sequence set:	!prototypes_A (34 sequences)
Number of related sequences reported:	10
Minimal VP1 subsequence match length	600
Sequence alignment method:	muscle (default parameters)
Sequence alignment length:	633
Phylogeny reconstruction method:	fdnadist, fneighbor
Number of bootstrap samples:	1000
Random seed for bootstrapping:	1
Displaying bootstrap values above:	70.0%
Number of sequences in tree capped at:	100
Number of prototype sequences in tree:	15
VIBASys version:	reflabs-1.1.0

Sequences in the Phylogenetic Tree

All sequences in the tree are in taxonomic group FMDV/A

label	accession	host(s)	lab	country	taxonomic information
TAI/22/2016	n/a	cattle	WRLFMD	Thailand	ASIA/Sea-97
TAI/20/2016	n/a	cattle	WRLFMD	Thailand	ASIA/Sea-97
TAI/19/2016	n/a	cattle	WRLFMD	Thailand	ASIA/Sea-97
TAI/18/2016	n/a	cattle	WRLFMD	Thailand	ASIA/Sea-97
TAI/23/2016	n/a	cattle	WRLFMD	Thailand	ASIA/Sea-97
TAI/10/2016	n/a	cattle	WRLFMD	Thailand	ASIA/Sea-97
TAI/12/2016	n/a	cattle	WRLFMD	Thailand	ASIA/Sea-97
TAI/13/2016	n/a	cattle	WRLFMD	Thailand	ASIA/Sea-97
TAI/11/2016	n/a	cattle	WRLFMD	Thailand	ASIA/Sea-97
TAI/16/2016	n/a	cattle	WRLFMD	Thailand	ASIA/Sea-97
TAI/15/2016	n/a	cattle	WRLFMD	Thailand	ASIA/Sea-97
TAI/7/2016	n/a	cattle	WRLFMD	Thailand	ASIA/Sea-97
TAI/6/2016	n/a	cattle	WRLFMD	Thailand	ASIA/Sea-97
KM/TAW/2015*	n/a	cattle	NVRI	Taiwan	ASIA/Sea-97
TAI/5/2015	n/a	cattle	WRLFMD	Thailand	ASIA/Sea-97
TAI/3/2015	n/a	cattle	WRLFMD	Thailand	ASIA/Sea-97
TAI/4/2015	n/a	cattle	WRLFMD	Thailand	ASIA/Sea-97
LAO/1/2015	n/a	cattle	WRLFMD	Laos	ASIA/Sea-97
TAI/21/2015	n/a	cattle	WRLFMD	Thailand	ASIA/Sea-97
TAI/24/2015	n/a	cattle	WRLFMD	Thailand	ASIA/Sea-97
TAI/21/2014	n/a	cattle	WRLFMD	Thailand	ASIA/Sea-97
TAI/12/2015	n/a	porcine	WRLFMD	Thailand	ASIA/Sea-97
TAI/17/2014	n/a	cattle	WRLFMD	Thailand	ASIA/Sea-97
TAI/13/2015	n/a	cattle	WRLFMD	Thailand	ASIA/Sea-97
TAI/23/2015	n/a	cattle	WRLFMD	Thailand	ASIA/Sea-97
Zabaikalsky/2/RUS/2014*	n/a	cattle	ARRIAH	Russia	ASIA/Sea-97
Zabaikalsky/5/RUS/2013*	n/a	cattle	ARRIAH	Russia	ASIA/Sea-97
Zabaikalsky/1/RUS/2014*	n/a	cattle	ARRIAH	Russia	ASIA/Sea-97
Zabaikalsky/6/RUS/2013*	n/a	cattle	ARRIAH	Russia	ASIA/Sea-97
Amur/2/RUS/2013*	n/a	cattle	ARRIAH	Russia	ASIA/Sea-97
Amur/4/RUS/2013*	n/a	cattle	ARRIAH	Russia	ASIA/Sea-97
Amur/RUS/2013*	n/a	cattle	ARRIAH	Russia	ASIA/Sea-97
Amur/3/RUS/2013*	n/a	cattle	ARRIAH	Russia	ASIA/Sea-97
GZ-BY/CHA/2013*	KJ646645	cattle	Guizhou University	China	ASIA/Sea-97
GZ-GY/CHA/2013*	KJ646651	cattle	Guizhou University	China	ASIA/Sea-97

continued on next page

label	accession	host(s)	lab	country	taxonomic information
GZ-YA/CHA/2013*	KJ646646	cattle	Guizhou University	China	ASIA/Sea-97
GZ-WD/CHA/2013*	KJ646648	cattle	Guizhou University	China	ASIA/Sea-97
GZ-XF/CHA/2013*	KJ646657	cattle	Guizhou University	China	ASIA/Sea-97
GZ-HX/CHA/2013*	KJ646647	cattle	Guizhou University	China	ASIA/Sea-97
GZ-JC/CHA/2013*	KJ646650	cattle	Guizhou University	China	ASIA/Sea-97
GZ-ZB/CHA/2013*	KJ646649	cattle	Guizhou University	China	ASIA/Sea-97
MOG/5/2013	n/a	yak	WRLFMD	Mongolia	ASIA/Sea-97
MOG/4/2013	n/a	yak	WRLFMD	Mongolia	ASIA/Sea-97
MOG/1/2013	n/a	yak	WRLFMD	Mongolia	ASIA/Sea-97
MOG/2/2013	n/a	yak	WRLFMD	Mongolia	ASIA/Sea-97
MOG/2013*	n/a	cattle	ARRIAH	Mongolia	ASIA/Sea-97
MOG/3/2013	n/a	yak	WRLFMD	Mongolia	ASIA/Sea-97
KAZ/2/2013*	n/a	cattle	ARRIAH	Kazakhstan	ASIA/Sea-97
Zabaikalsky/RUS/2013*	n/a	cattle	n/a	Russia	ASIA/Sea-97
TAI/17/2016	n/a	cattle	WRLFMD	Thailand	ASIA/Sea-97
TAI/9/2016	n/a	cattle	WRLFMD	Thailand	ASIA/Sea-97
TAI/3/2016	n/a	cattle	WRLFMD	Thailand	ASIA/Sea-97
MYA/2/2015	n/a	bovine	WRLFMD	Myanmar	ASIA/Sea-97
MYA/3/2015	n/a	bovine	WRLFMD	Myanmar	ASIA/Sea-97
KAZ/1/2013*	n/a	cattle	ARRIAH	Kazakhstan	ASIA/Sea-97
MYA/4/2015	n/a	bovine	WRLFMD	Myanmar	ASIA/Sea-97
GDMM-CHA-2013-S*	KF450794	porcine	n/a	China	ASIA/Sea-97
MOG/11/2016*	n/a	cattle	ARRIAH	Mongolia	ASIA/Sea-97
MOG/14/2016*	n/a	cattle	ARRIAH	Mongolia	ASIA/Sea-97
MOG/15/2016*	n/a	cattle	ARRIAH	Mongolia	ASIA/Sea-97
VIT/26/2012	n/a	cattle	WRLFMD	Vietnam	ASIA/Sea-97
VIT/25/2012	n/a	cattle	WRLFMD	Vietnam	ASIA/Sea-97
TAI/15/2012	n/a	cattle	WRLFMD	Thailand	ASIA/Sea-97
MOG/13/2013	n/a	cattle	WRLFMD	Mongolia	ASIA/Sea-97
MOG/12/2013	n/a	cattle	WRLFMD	Mongolia	ASIA/Sea-97
MOG/11/2013	n/a	cattle	WRLFMD	Mongolia	ASIA/Sea-97
TAI/9/2011	n/a	cattle	WRLFMD	Thailand	ASIA/Sea-97
TAI/10/2011	n/a	cattle	WRLFMD	Thailand	ASIA/Sea-97
TAI 3/12*	n/a	n/a	TRRL	Thailand	ASIA/Sea-97
MAY/4/2011	n/a	cattle	WRLFMD	Malaysia	ASIA/Sea-97
TAI/7/2010	n/a	cattle	WRLFMD	Thailand	ASIA/Sea-97
TAI/8/2010	n/a	cattle	WRLFMD	Thailand	ASIA/Sea-97
TAI/1/2011	n/a	cattle	WRLFMD	Thailand	ASIA/Sea-97
TAI/3/2011	n/a	cattle	WRLFMD	Thailand	ASIA/Sea-97
VIT/20/2012	KT223562	porcine	WRLFMD	Vietnam	ASIA/Sea-97
VIT/15/2012	n/a	porcine	WRLFMD	Vietnam	ASIA/Sea-97
VIT/17/2012	n/a	porcine	WRLFMD	Vietnam	ASIA/Sea-97
VIT/18/2012	n/a	porcine	WRLFMD	Vietnam	ASIA/Sea-97
VIT/16/2012	n/a	porcine	WRLFMD	Vietnam	ASIA/Sea-97
TAI/6/2013	n/a	cattle	WRLFMD	Thailand	ASIA/Sea-97
TAI/7/2003	HQ116312	bovine	WRLFMD	Thailand	ASIA/Sea-97
TAI/118/87*	EF208777	n/a	WRLFMD	Thailand	ASIA/Thai-87
TAI/2/97	EF208778	n/a	WRLFMD	Thailand	ASIA/Sea-97
IRN/22/99	EF208772	n/a	WRLFMD	Iran	ASIA/Iran-99
IRN/2/87	EF208770	bovine	WRLFMD	Iran	ASIA/Iran-87
IRN/125/2010	n/a	bovine	WRLFMD	Iran	ASIA/Iran-05/SIS-10
IRN/1/2011	n/a	bovine	WRLFMD	Iran	ASIA/Iran-05/FAR-11
IRN/78/2009	n/a	n/a	WRLFMD	Iran	ASIA/Iran-05/FAR-09
TUR/3/2010	n/a	cattle	WRLFMD	Turkey	ASIA/Iran-05/KSS-09
TUR/1/2008	FJ755133	cattle	WRLFMD	Turkey	ASIA/Iran-05/ARD-07
IND/40/2000*	AF390646	cattle	PD-FMD	India	ASIA/G-VII
SAU/16/95	EU553874	n/a	WRLFMD	Saudi Arabia	ASIA/G-VII
IRQ/24/64	AY593763	bovine	PIADC	Iraq	ASIA/A22
Bangkok/TAI/60*	AY593755	n/a	PIADC	Thailand	ASIA/A15
Cruzeiro/BRA/55*	AY593768	bovine	PIADC	Brazil	EURO-SA/A24
KEN/3/64	AY593761	n/a	PIADC	Kenya	AFRICA/G-III

*, not a WRLFMD Reference Number
n/a, not available