

FAO World Reference Laboratory for Foot-and-Mouth Disease (WRLFMD)

Genotyping Report

FMDV serotype: O
Country: Nepal
Year: 2015, 2016
Batch: WRLFMD/2016/00025
No. of sequences: 15
Report date: 15th August 2016
Report generated by: Nick Knowles
Report checked by: Jemma Wadsworth

Analysis Parameters

VP1 subsequence extractor: vp1_O
Query sequence set: WRLFMD/2016/00025-Nepal-O (15 sequences)
Sequence database set: !allseqs_O (3074 sequences)
Prototype sequence set: !prototypes_O (47 sequences)
Number of related sequences reported: 10
Minimal VP1 subsequence match length: 600
VIBASys version: reflabs-1.0.3



Copyright © 2016 The Pirbright Institute, Ash Road, Pirbright, Woking GU24 0NF, United Kingdom.

www: <http://www.wrlfmd.org/>

email: reporting@pirbright.ac.uk

The contents of this report should not be reproduced without permission.

Virus sample name:	NEP/28/2015
Sender reference:	1 NP, 2072/073 (63)
Location of origin:	Bhaktapur
Country of origin:	Nepal
Date of collection:	01/12/2015
Host species:	cattle
Serotype:	O
Topotype:	ME-SA
Lineage:	Ind-2001
Sublineage:	d
Sequence length:	633
Ambiguities:	0
Material submitted for sequencing:	BTy1
Harvest date of material:	22/07/2016
Primers:	O-1C244F/EUR-2B52R; O-1C272F/EUR-2B52R
Received for sequencing:	11/08/2016
Created:	12/08/2016
Last updated:	12/08/2016
VIBASys IDs: sample 29905, genome 29906, sequence viba_29907, sequencing info 29908	

Most Closely Related Sequences

sequence	virus name	Host	% Id.	# Ambig.	serotype	topotype	lineage	sublineage
viba_26117	NEP/17/2015	cattle	100.0	0	O	ME-SA	Ind-2001	d
viba_29927	NEP/6/2016	cattle	100.0	0	O	ME-SA	Ind-2001	d
viba_26125	NEP/19/2015	cattle	100.0	0	O	ME-SA	Ind-2001	d
viba_29923	NEP/5/2016	cattle	99.8	0	O	ME-SA	Ind-2001	d
viba_29947	NEP/11/2016	goats	99.7	0	O	ME-SA	Ind-2001	d
viba_29943	NEP/10/2016	goats	99.7	0	O	ME-SA	Ind-2001	d
viba_29951	NEP/12/2016	cattle	99.7	0	O	ME-SA	Ind-2001	d
viba_29959	NEP/14/2016	water buffalo	99.7	0	O	ME-SA	Ind-2001	d
viba_29955	NEP/13/2016	cattle	99.7	0	O	ME-SA	Ind-2001	d
viba_23871	UAE/4/2016	cattle	99.2	0	O	ME-SA	Ind-2001	d

Most Closely Related Prototype Sequences

see http://www.wrlfmd.org/fmd_genotyping/prototypes.htm

sequence	virus name	Host	% Id.	# Ambig.	serotype	topotype	lineage	sublineage
viba_293	BHU/3/2009	cattle	94.6	0	O	ME-SA	Ind-2001	d
viba_541	OMN/7/2001	bovine	93.4	0	O	ME-SA	Ind-2001	b
viba_705	KUW/3/97	bovine	92.1	0	O	ME-SA	Ind-2001	a
viba_397	UAE/4/2008	gazelle	90.9	0	O	ME-SA	Ind-2001	c
viba_285	UKG/35/2001	porcine	89.6	0	O	ME-SA	PanAsia	
viba_766	IRN/31/2009	cattle	89.3	0	O	ME-SA	PanAsia-2	FAR-09
viba_359	Manisa/TUR/69		88.9	0	O	ME-SA		
viba_719	IRN/88/2009		88.8	0	O	ME-SA	PanAsia-2	ANT-10
viba_650	IRN/8/2005	ovine	88.8	0	O	ME-SA	PanAsia-2	
viba_666	IRN/18/2010	cattle	88.2	0	O	ME-SA	PanAsia-2	BAL-09

Virus sample name:	NEP/29/2015
Sender reference:	4 NP, 2072/073 (87)
Location of origin:	Sunsari
Country of origin:	Nepal
Date of collection:	29/12/2015
Host species:	cattle
Serotype:	O
Topotype:	ME-SA
Lineage:	Ind-2001
Sublineage:	d
Sequence length:	633
Ambiguities:	0
Material submitted for sequencing:	BTy2
Harvest date of material:	30/07/2016
Primers:	O-1C244F/EUR-2B52R; O-1C272F/EUR-2B52R
Received for sequencing:	11/08/2016
Created:	12/08/2016
Last updated:	12/08/2016
VIBASys IDs: sample 29909, genome 29910, sequence viba_29911, sequencing info 29912	

Most Closely Related Sequences

sequence	virus name	Host	% Id.	# Ambig.	serotype	topotype	lineage	sublineage
viba_29935	NEP/8/2016	cattle	99.8	0	O	ME-SA	Ind-2001	d
viba_26129	NEP/21/2015	cattle	99.7	0	O	ME-SA	Ind-2001	d
viba_26137	NEP/24/2015	cattle	99.7	0	O	ME-SA	Ind-2001	d
viba_26133	NEP/23/2015	cattle	99.7	0	O	ME-SA	Ind-2001	d
viba_29915	NEP/3/2016	water buffalo	99.5	0	O	ME-SA	Ind-2001	d
viba_26141	NEP/25/2015	cattle	99.5	0	O	ME-SA	Ind-2001	d
viba_26109	NEP/14/2015	cattle	99.4	0	O	ME-SA	Ind-2001	d
viba_26113	NEP/15/2015	cattle	99.4	0	O	ME-SA	Ind-2001	d
viba_26121	NEP/18/2015	porcine	99.2	0	O	ME-SA	Ind-2001	d
viba_29939	NEP/9/2016	porcine	98.7	0	O	ME-SA	Ind-2001	d

Most Closely Related Prototype Sequences

see http://www.wrlfmd.org/fmd_genotyping/prototypes.htm

sequence	virus name	Host	% Id.	# Ambig.	serotype	topotype	lineage	sublineage
viba_293	BHU/3/2009	cattle	93.5	0	O	ME-SA	Ind-2001	d
viba_541	OMN/7/2001	bovine	92.6	0	O	ME-SA	Ind-2001	b
viba_705	KUW/3/97	bovine	91.3	0	O	ME-SA	Ind-2001	a
viba_397	UAE/4/2008	gazelle	89.7	0	O	ME-SA	Ind-2001	c
viba_285	UKG/35/2001	porcine	88.5	0	O	ME-SA	PanAsia	
viba_359	Manisa/TUR/69		88.3	0	O	ME-SA		
viba_766	IRN/31/2009	cattle	87.8	0	O	ME-SA	PanAsia-2	FAR-09
viba_650	IRN/8/2005	ovine	87.7	0	O	ME-SA	PanAsia-2	
viba_719	IRN/88/2009		87.4	0	O	ME-SA	PanAsia-2	ANT-10
viba_666	IRN/18/2010	cattle	87.4	0	O	ME-SA	PanAsia-2	BAL-09

Virus sample name:	NEP/3/2016
Sender reference:	7 NP, 2072/073 (92)
Location of origin:	Gorkha
Country of origin:	Nepal
Date of collection:	10/01/2016
Host species:	water buffalo
Serotype:	O
Topotype:	ME-SA
Lineage:	Ind-2001
Sublineage:	d
Sequence length:	633
Ambiguities:	0
Material submitted for sequencing:	BTy1
Harvest date of material:	24/07/2016
Primers:	O-1C244F/EUR-2B52R; O-1C272F/EUR-2B52R
Received for sequencing:	11/08/2016
Created:	12/08/2016
Last updated:	12/08/2016
VIBASys IDs: sample 29913, genome 29914, sequence viba_29915, sequencing info 29916	

Most Closely Related Sequences

sequence	virus name	Host	% Id.	# Ambig.	serotype	topotype	lineage	sublineage
viba_29935	NEP/8/2016	cattle	99.7	0	O	ME-SA	Ind-2001	d
viba_26141	NEP/25/2015	cattle	99.7	0	O	ME-SA	Ind-2001	d
viba_26129	NEP/21/2015	cattle	99.5	0	O	ME-SA	Ind-2001	d
viba_26137	NEP/24/2015	cattle	99.5	0	O	ME-SA	Ind-2001	d
viba_26133	NEP/23/2015	cattle	99.5	0	O	ME-SA	Ind-2001	d
viba_29911	NEP/29/2015	cattle	99.5	0	O	ME-SA	Ind-2001	d
viba_26109	NEP/14/2015	cattle	99.2	0	O	ME-SA	Ind-2001	d
viba_26113	NEP/15/2015	cattle	99.2	0	O	ME-SA	Ind-2001	d
viba_26121	NEP/18/2015	porcine	99.1	0	O	ME-SA	Ind-2001	d
viba_29939	NEP/9/2016	porcine	98.6	0	O	ME-SA	Ind-2001	d

Most Closely Related Prototype Sequences

see http://www.wrlfmd.org/fmd_genotyping/prototypes.htm

sequence	virus name	Host	% Id.	# Ambig.	serotype	topotype	lineage	sublineage
viba_293	BHU/3/2009	cattle	93.4	0	O	ME-SA	Ind-2001	d
viba_541	OMN/7/2001	bovine	92.4	0	O	ME-SA	Ind-2001	b
viba_705	KUW/3/97	bovine	91.2	0	O	ME-SA	Ind-2001	a
viba_397	UAE/4/2008	gazelle	89.6	0	O	ME-SA	Ind-2001	c
viba_285	UKG/35/2001	porcine	88.3	0	O	ME-SA	PanAsia	
viba_359	Manisa/TUR/69		88.2	0	O	ME-SA		
viba_766	IRN/31/2009	cattle	87.7	0	O	ME-SA	PanAsia-2	FAR-09
viba_650	IRN/8/2005	ovine	87.5	0	O	ME-SA	PanAsia-2	
viba_719	IRN/88/2009		87.2	0	O	ME-SA	PanAsia-2	ANT-10
viba_666	IRN/18/2010	cattle	87.2	0	O	ME-SA	PanAsia-2	BAL-09

Virus sample name:	NEP/4/2016
Sender reference:	8 NP, 2072/073 (95)
Location of origin:	Gorkha
Country of origin:	Nepal
Date of collection:	10/01/2016
Host species:	water buffalo
Serotype:	O
Topotype:	ME-SA
Lineage:	Ind-2001
Sublineage:	d
Sequence length:	633
Ambiguities:	0
Material submitted for sequencing:	BTy1
Harvest date of material:	24/07/2016
Primers:	O-1C244F/EUR-2B52R; O-1C272F/EUR-2B52R
Received for sequencing:	11/08/2016
Created:	12/08/2016
Last updated:	12/08/2016
VIBASys IDs: sample 29917, genome 29918, sequence viba_29919, sequencing info 29920	

Most Closely Related Sequences

sequence	virus name	Host	% Id.	# Ambig.	serotype	topotype	lineage	sublineage
viba_29907	NEP/28/2015	cattle	98.6	0	O	ME-SA	Ind-2001	d
viba_26117	NEP/17/2015	cattle	98.6	0	O	ME-SA	Ind-2001	d
viba_23820	SAU/7/2016	bovine	98.6	0	O	ME-SA	Ind-2001	d
viba_29927	NEP/6/2016	cattle	98.6	0	O	ME-SA	Ind-2001	d
viba_26125	NEP/19/2015	cattle	98.6	0	O	ME-SA	Ind-2001	d
viba_29923	NEP/5/2016	cattle	98.4	0	O	ME-SA	Ind-2001	d
viba_23812	SAU/2/2016	bovine	98.4	0	O	ME-SA	Ind-2001	d
viba_23816	SAU/3/2016	bovine	98.4	0	O	ME-SA	Ind-2001	d
viba_29931	NEP/7/2016	cattle	98.4	0	O	ME-SA	Ind-2001	d
viba_29947	NEP/11/2016	goats	98.3	0	O	ME-SA	Ind-2001	d

Most Closely Related Prototype Sequences

see http://www.wrlfmd.org/fmd_genotyping/prototypes.htm

sequence	virus name	Host	% Id.	# Ambig.	serotype	topotype	lineage	sublineage
viba_293	BHU/3/2009	cattle	93.8	0	O	ME-SA	Ind-2001	d
viba_541	OMN/7/2001	bovine	92.4	0	O	ME-SA	Ind-2001	b
viba_705	KUW/3/97	bovine	91.0	0	O	ME-SA	Ind-2001	a
viba_397	UAE/4/2008	gazelle	90.1	0	O	ME-SA	Ind-2001	c
viba_285	UKG/35/2001	porcine	88.7	0	O	ME-SA	PanAsia	
viba_359	Manisa/TUR/69		88.6	0	O	ME-SA		
viba_766	IRN/31/2009	cattle	88.2	0	O	ME-SA	PanAsia-2	FAR-09
viba_650	IRN/8/2005	ovine	87.9	0	O	ME-SA	PanAsia-2	
viba_666	IRN/18/2010	cattle	87.9	0	O	ME-SA	PanAsia-2	BAL-09
viba_491	TUR/257/2008		87.6	0	O	ME-SA	PanAsia-2	TER-08

Virus sample name:	NEP/5/2016
Sender reference:	12 NP, 2072/073 (123)
Location of origin:	Jhapa
Country of origin:	Nepal
Date of collection:	30/01/2016
Host species:	cattle
Serotype:	O
Topotype:	ME-SA
Lineage:	Ind-2001
Sublineage:	d
Sequence length:	633
Ambiguities:	0
Material submitted for sequencing:	BTy1
Harvest date of material:	26/07/2016
Primers:	O-1C244F/EUR-2B52R; O-1C272F/EUR-2B52R
Received for sequencing:	11/08/2016
Created:	12/08/2016
Last updated:	12/08/2016
VIBASys IDs: sample 29921, genome 29922, sequence viba_29923, sequencing info 29924	

Most Closely Related Sequences

sequence	virus name	Host	% Id.	# Ambig.	serotype	topotype	lineage	sublineage
viba_29907	NEP/28/2015	cattle	99.8	0	O	ME-SA	Ind-2001	d
viba_26117	NEP/17/2015	cattle	99.8	0	O	ME-SA	Ind-2001	d
viba_29927	NEP/6/2016	cattle	99.8	0	O	ME-SA	Ind-2001	d
viba_26125	NEP/19/2015	cattle	99.8	0	O	ME-SA	Ind-2001	d
viba_29947	NEP/11/2016	goats	99.5	0	O	ME-SA	Ind-2001	d
viba_29943	NEP/10/2016	goats	99.5	0	O	ME-SA	Ind-2001	d
viba_29951	NEP/12/2016	cattle	99.5	0	O	ME-SA	Ind-2001	d
viba_29959	NEP/14/2016	water buffalo	99.5	0	O	ME-SA	Ind-2001	d
viba_29955	NEP/13/2016	cattle	99.5	0	O	ME-SA	Ind-2001	d
viba_23871	UAE/4/2016	cattle	99.1	0	O	ME-SA	Ind-2001	d

Most Closely Related Prototype Sequences

see http://www.wrlfmd.org/fmd_genotyping/prototypes.htm

sequence	virus name	Host	% Id.	# Ambig.	serotype	topotype	lineage	sublineage
viba_293	BHU/3/2009	cattle	94.5	0	O	ME-SA	Ind-2001	d
viba_541	OMN/7/2001	bovine	93.2	0	O	ME-SA	Ind-2001	b
viba_705	KUW/3/97	bovine	92.0	0	O	ME-SA	Ind-2001	a
viba_397	UAE/4/2008	gazelle	90.7	0	O	ME-SA	Ind-2001	c
viba_285	UKG/35/2001	porcine	89.6	0	O	ME-SA	PanAsia	
viba_766	IRN/31/2009	cattle	89.1	0	O	ME-SA	PanAsia-2	FAR-09
viba_359	Manisa/TUR/69		88.8	0	O	ME-SA		
viba_719	IRN/88/2009		88.6	0	O	ME-SA	PanAsia-2	ANT-10
viba_650	IRN/8/2005	ovine	88.6	0	O	ME-SA	PanAsia-2	
viba_666	IRN/18/2010	cattle	88.0	0	O	ME-SA	PanAsia-2	BAL-09

Virus sample name:	NEP/6/2016
Sender reference:	11 NP, 2072/073 (106)
Location of origin:	Kaski
Country of origin:	Nepal
Date of collection:	01/02/2016
Host species:	cattle
Serotype:	O
Topotype:	ME-SA
Lineage:	Ind-2001
Sublineage:	d
Sequence length:	633
Ambiguities:	0
Material submitted for sequencing:	BTy1
Harvest date of material:	26/07/2016
Primers:	O-1C244F/EUR-2B52R; O-1C272F/EUR-2B52R
Received for sequencing:	11/08/2016
Created:	12/08/2016
Last updated:	12/08/2016
VIBASys IDs: sample 29925, genome 29926, sequence viba_29927, sequencing info 29928	

Most Closely Related Sequences

sequence	virus name	Host	% Id.	# Ambig.	serotype	topotype	lineage	sublineage
viba_29907	NEP/28/2015	cattle	100.0	0	O	ME-SA	Ind-2001	d
viba_26117	NEP/17/2015	cattle	100.0	0	O	ME-SA	Ind-2001	d
viba_26125	NEP/19/2015	cattle	100.0	0	O	ME-SA	Ind-2001	d
viba_29923	NEP/5/2016	cattle	99.8	0	O	ME-SA	Ind-2001	d
viba_29947	NEP/11/2016	goats	99.7	0	O	ME-SA	Ind-2001	d
viba_29943	NEP/10/2016	goats	99.7	0	O	ME-SA	Ind-2001	d
viba_29951	NEP/12/2016	cattle	99.7	0	O	ME-SA	Ind-2001	d
viba_29959	NEP/14/2016	water buffalo	99.7	0	O	ME-SA	Ind-2001	d
viba_29955	NEP/13/2016	cattle	99.7	0	O	ME-SA	Ind-2001	d
viba_23871	UAE/4/2016	cattle	99.2	0	O	ME-SA	Ind-2001	d

Most Closely Related Prototype Sequences

see http://www.wrlfmd.org/fmd_genotyping/prototypes.htm

sequence	virus name	Host	% Id.	# Ambig.	serotype	topotype	lineage	sublineage
viba_293	BHU/3/2009	cattle	94.6	0	O	ME-SA	Ind-2001	d
viba_541	OMN/7/2001	bovine	93.4	0	O	ME-SA	Ind-2001	b
viba_705	KUW/3/97	bovine	92.1	0	O	ME-SA	Ind-2001	a
viba_397	UAE/4/2008	gazelle	90.9	0	O	ME-SA	Ind-2001	c
viba_285	UKG/35/2001	porcine	89.6	0	O	ME-SA	PanAsia	
viba_766	IRN/31/2009	cattle	89.3	0	O	ME-SA	PanAsia-2	FAR-09
viba_359	Manisa/TUR/69		88.9	0	O	ME-SA		
viba_719	IRN/88/2009		88.8	0	O	ME-SA	PanAsia-2	ANT-10
viba_650	IRN/8/2005	ovine	88.8	0	O	ME-SA	PanAsia-2	
viba_666	IRN/18/2010	cattle	88.2	0	O	ME-SA	PanAsia-2	BAL-09

Virus sample name:	NEP/7/2016
Sender reference:	9 NP, 2072/073 (98)
Location of origin:	Lalitpur
Country of origin:	Nepal
Date of collection:	12/02/2016
Host species:	cattle
Serotype:	O
Topotype:	ME-SA
Lineage:	Ind-2001
Sublineage:	d
Sequence length:	633
Ambiguities:	0
Material submitted for sequencing:	BTy1
Harvest date of material:	26/07/2016
Primers:	O-1C244F/EUR-2B52R; O-1C272F/EUR-2B52R
Received for sequencing:	11/08/2016
Created:	12/08/2016
Last updated:	12/08/2016
VIBASys IDs: sample 29929, genome 29930, sequence viba_29931, sequencing info 29932	

Most Closely Related Sequences

sequence	virus name	Host	% Id.	# Ambig.	serotype	topotype	lineage	sublineage
viba_29907	NEP/28/2015	cattle	99.2	0	O	ME-SA	Ind-2001	d
viba_26117	NEP/17/2015	cattle	99.2	0	O	ME-SA	Ind-2001	d
viba_29927	NEP/6/2016	cattle	99.2	0	O	ME-SA	Ind-2001	d
viba_26125	NEP/19/2015	cattle	99.2	0	O	ME-SA	Ind-2001	d
viba_29923	NEP/5/2016	cattle	99.1	0	O	ME-SA	Ind-2001	d
viba_29947	NEP/11/2016	goats	98.9	0	O	ME-SA	Ind-2001	d
viba_26101	NEP/11/2015	cattle	98.9	0	O	ME-SA	Ind-2001	d
viba_23820	SAU/7/2016	bovine	98.9	0	O	ME-SA	Ind-2001	d
viba_29943	NEP/10/2016	goats	98.9	0	O	ME-SA	Ind-2001	d
viba_26097	NEP/10/2015	cattle	98.9	0	O	ME-SA	Ind-2001	d

Most Closely Related Prototype Sequences

see http://www.wrlfmd.org/fmd_genotyping/prototypes.htm

sequence	virus name	Host	% Id.	# Ambig.	serotype	topotype	lineage	sublineage
viba_293	BHU/3/2009	cattle	94.2	0	O	ME-SA	Ind-2001	d
viba_541	OMN/7/2001	bovine	93.2	0	O	ME-SA	Ind-2001	b
viba_705	KUW/3/97	bovine	92.0	0	O	ME-SA	Ind-2001	a
viba_397	UAE/4/2008	gazelle	90.4	0	O	ME-SA	Ind-2001	c
viba_285	UKG/35/2001	porcine	88.8	0	O	ME-SA	PanAsia	
viba_766	IRN/31/2009	cattle	88.5	0	O	ME-SA	PanAsia-2	FAR-09
viba_359	Manisa/TUR/69		88.3	0	O	ME-SA		
viba_719	IRN/88/2009		88.0	0	O	ME-SA	PanAsia-2	ANT-10
viba_650	IRN/8/2005	ovine	88.0	0	O	ME-SA	PanAsia-2	
viba_666	IRN/18/2010	cattle	87.7	0	O	ME-SA	PanAsia-2	BAL-09

Virus sample name:	NEP/8/2016
Sender reference:	10 NP, 2072/073 (101)
Location of origin:	Lalitpur
Country of origin:	Nepal
Date of collection:	12/02/2016
Host species:	cattle
Serotype:	O
Topotype:	ME-SA
Lineage:	Ind-2001
Sublineage:	d
Sequence length:	633
Ambiguities:	0
Material submitted for sequencing:	BTy1
Harvest date of material:	26/07/2016
Primers:	O-1C244F/EUR-2B52R; O-1C272F/EUR-2B52R
Received for sequencing:	11/08/2016
Created:	12/08/2016
Last updated:	12/08/2016
VIBASys IDs: sample 29933, genome 29934, sequence viba_29935, sequencing info 29936	

Most Closely Related Sequences

sequence	virus name	Host	% Id.	# Ambig.	serotype	topotype	lineage	sublineage
viba_26129	NEP/21/2015	cattle	99.8	0	O	ME-SA	Ind-2001	d
viba_26137	NEP/24/2015	cattle	99.8	0	O	ME-SA	Ind-2001	d
viba_26133	NEP/23/2015	cattle	99.8	0	O	ME-SA	Ind-2001	d
viba_29911	NEP/29/2015	cattle	99.8	0	O	ME-SA	Ind-2001	d
viba_29915	NEP/3/2016	water buffalo	99.7	0	O	ME-SA	Ind-2001	d
viba_26141	NEP/25/2015	cattle	99.7	0	O	ME-SA	Ind-2001	d
viba_26109	NEP/14/2015	cattle	99.5	0	O	ME-SA	Ind-2001	d
viba_26113	NEP/15/2015	cattle	99.5	0	O	ME-SA	Ind-2001	d
viba_26121	NEP/18/2015	porcine	99.4	0	O	ME-SA	Ind-2001	d
viba_29939	NEP/9/2016	porcine	98.9	0	O	ME-SA	Ind-2001	d

Most Closely Related Prototype Sequences

see http://www.wrlfmd.org/fmd_genotyping/prototypes.htm

sequence	virus name	Host	% Id.	# Ambig.	serotype	topotype	lineage	sublineage
viba_293	BHU/3/2009	cattle	93.7	0	O	ME-SA	Ind-2001	d
viba_541	OMN/7/2001	bovine	92.7	0	O	ME-SA	Ind-2001	b
viba_705	KUW/3/97	bovine	91.5	0	O	ME-SA	Ind-2001	a
viba_397	UAE/4/2008	gazelle	89.9	0	O	ME-SA	Ind-2001	c
viba_285	UKG/35/2001	porcine	88.7	0	O	ME-SA	PanAsia	
viba_359	Manisa/TUR/69		88.5	0	O	ME-SA		
viba_766	IRN/31/2009	cattle	88.0	0	O	ME-SA	PanAsia-2	FAR-09
viba_650	IRN/8/2005	ovine	87.9	0	O	ME-SA	PanAsia-2	
viba_719	IRN/88/2009		87.5	0	O	ME-SA	PanAsia-2	ANT-10
viba_666	IRN/18/2010	cattle	87.5	0	O	ME-SA	PanAsia-2	BAL-09

Virus sample name:	NEP/9/2016
Sender reference:	13 NP, 2072/073 (131)
Location of origin:	Dolakha
Country of origin:	Nepal
Date of collection:	12/02/2016
Host species:	porcine
Serotype:	O
Topotype:	ME-SA
Lineage:	Ind-2001
Sublineage:	d
Sequence length:	633
Ambiguities:	0
Material submitted for sequencing:	RS2
Harvest date of material:	31/07/2016
Primers:	O-1C244F/EUR-2B52R; O-1C272F/EUR-2B52R
Received for sequencing:	11/08/2016
Created:	13/08/2016
Last updated:	13/08/2016
VIBASys IDs: sample 29937, genome 29938, sequence viba_29939, sequencing info 29940	

Most Closely Related Sequences

sequence	virus name	Host	% Id.	# Ambig.	serotype	topotype	lineage	sublineage
viba_29935	NEP/8/2016	cattle	98.9	0	O	ME-SA	Ind-2001	d
viba_29907	NEP/28/2015	cattle	98.9	0	O	ME-SA	Ind-2001	d
viba_26117	NEP/17/2015	cattle	98.9	0	O	ME-SA	Ind-2001	d
viba_29927	NEP/6/2016	cattle	98.9	0	O	ME-SA	Ind-2001	d
viba_26125	NEP/19/2015	cattle	98.9	0	O	ME-SA	Ind-2001	d
viba_26129	NEP/21/2015	cattle	98.7	0	O	ME-SA	Ind-2001	d
viba_26109	NEP/14/2015	cattle	98.7	0	O	ME-SA	Ind-2001	d
viba_26137	NEP/24/2015	cattle	98.7	0	O	ME-SA	Ind-2001	d
viba_29923	NEP/5/2016	cattle	98.7	0	O	ME-SA	Ind-2001	d
viba_26133	NEP/23/2015	cattle	98.7	0	O	ME-SA	Ind-2001	d

Most Closely Related Prototype Sequences

see http://www.wrlfmd.org/fmd_genotyping/prototypes.htm

sequence	virus name	Host	% Id.	# Ambig.	serotype	topotype	lineage	sublineage
viba_293	BHU/3/2009	cattle	94.2	0	O	ME-SA	Ind-2001	d
viba_541	OMN/7/2001	bovine	92.9	0	O	ME-SA	Ind-2001	b
viba_705	KUW/3/97	bovine	91.3	0	O	ME-SA	Ind-2001	a
viba_397	UAE/4/2008	gazelle	90.1	0	O	ME-SA	Ind-2001	c
viba_285	UKG/35/2001	porcine	88.5	0	O	ME-SA	PanAsia	
viba_359	Manisa/TUR/69		88.3	0	O	ME-SA		
viba_766	IRN/31/2009	cattle	88.2	0	O	ME-SA	PanAsia-2	FAR-09
viba_719	IRN/88/2009		87.7	0	O	ME-SA	PanAsia-2	ANT-10
viba_650	IRN/8/2005	ovine	87.7	0	O	ME-SA	PanAsia-2	
viba_505	TUR/264/2009		87.5	0	O	ME-SA	PanAsia-2	SAN-09

Virus sample name:	NEP/10/2016
Sender reference:	14 NP, 2072/073 (133)
Location of origin:	Nuwakot
Country of origin:	Nepal
Date of collection:	10/03/2016
Host species:	goats
Serotype:	O
Topotype:	ME-SA
Lineage:	Ind-2001
Sublineage:	d
Sequence length:	633
Ambiguities:	0
Material submitted for sequencing:	BTy1
Harvest date of material:	26/07/2016
Primers:	O-1C244F/EUR-2B52R; O-1C272F/EUR-2B52R
Received for sequencing:	11/08/2016
Created:	13/08/2016
Last updated:	13/08/2016
VIBASys IDs: sample 29941, genome 29942, sequence viba_29943, sequencing info 29944	

Most Closely Related Sequences

sequence	virus name	Host	% Id.	# Ambig.	serotype	topotype	lineage	sublineage
viba_29947	NEP/11/2016	goats	100.0	0	O	ME-SA	Ind-2001	d
viba_29907	NEP/28/2015	cattle	99.7	0	O	ME-SA	Ind-2001	d
viba_26117	NEP/17/2015	cattle	99.7	0	O	ME-SA	Ind-2001	d
viba_29927	NEP/6/2016	cattle	99.7	0	O	ME-SA	Ind-2001	d
viba_26125	NEP/19/2015	cattle	99.7	0	O	ME-SA	Ind-2001	d
viba_29923	NEP/5/2016	cattle	99.5	0	O	ME-SA	Ind-2001	d
viba_29951	NEP/12/2016	cattle	99.4	0	O	ME-SA	Ind-2001	d
viba_29959	NEP/14/2016	water buffalo	99.4	0	O	ME-SA	Ind-2001	d
viba_29955	NEP/13/2016	cattle	99.4	0	O	ME-SA	Ind-2001	d
viba_23871	UAE/4/2016	cattle	98.9	0	O	ME-SA	Ind-2001	d

Most Closely Related Prototype Sequences

see http://www.wrlfmd.org/fmd_genotyping/prototypes.htm

sequence	virus name	Host	% Id.	# Ambig.	serotype	topotype	lineage	sublineage
viba_293	BHU/3/2009	cattle	94.3	0	O	ME-SA	Ind-2001	d
viba_541	OMN/7/2001	bovine	93.4	0	O	ME-SA	Ind-2001	b
viba_705	KUW/3/97	bovine	91.8	0	O	ME-SA	Ind-2001	a
viba_397	UAE/4/2008	gazelle	90.5	0	O	ME-SA	Ind-2001	c
viba_285	UKG/35/2001	porcine	89.8	0	O	ME-SA	PanAsia	
viba_766	IRN/31/2009	cattle	89.4	0	O	ME-SA	PanAsia-2	FAR-09
viba_359	Manisa/TUR/69		89.1	0	O	ME-SA		
viba_719	IRN/88/2009		89.0	0	O	ME-SA	PanAsia-2	ANT-10
viba_650	IRN/8/2005	ovine	89.0	0	O	ME-SA	PanAsia-2	
viba_666	IRN/18/2010	cattle	88.3	0	O	ME-SA	PanAsia-2	BAL-09

Virus sample name:	NEP/11/2016
Sender reference:	15 NP, 2072/073 (134)
Location of origin:	Nuwakot
Country of origin:	Nepal
Date of collection:	10/03/2016
Host species:	goats
Serotype:	O
Topotype:	ME-SA
Lineage:	Ind-2001
Sublineage:	d
Sequence length:	633
Ambiguities:	0
Material submitted for sequencing:	BTy1
Harvest date of material:	26/07/2016
Primers:	O-1C244F/EUR-2B52R; O-1C272F/EUR-2B52R
Received for sequencing:	11/08/2016
Created:	13/08/2016
Last updated:	13/08/2016
VIBASys IDs: sample 29945, genome 29946, sequence viba_29947, sequencing info 29948	

Most Closely Related Sequences

sequence	virus name	Host	% Id.	# Ambig.	serotype	topotype	lineage	sublineage
viba_29943	NEP/10/2016	goats	100.0	0	O	ME-SA	Ind-2001	d
viba_29907	NEP/28/2015	cattle	99.7	0	O	ME-SA	Ind-2001	d
viba_26117	NEP/17/2015	cattle	99.7	0	O	ME-SA	Ind-2001	d
viba_29927	NEP/6/2016	cattle	99.7	0	O	ME-SA	Ind-2001	d
viba_26125	NEP/19/2015	cattle	99.7	0	O	ME-SA	Ind-2001	d
viba_29923	NEP/5/2016	cattle	99.5	0	O	ME-SA	Ind-2001	d
viba_29951	NEP/12/2016	cattle	99.4	0	O	ME-SA	Ind-2001	d
viba_29959	NEP/14/2016	water buffalo	99.4	0	O	ME-SA	Ind-2001	d
viba_29955	NEP/13/2016	cattle	99.4	0	O	ME-SA	Ind-2001	d
viba_23871	UAE/4/2016	cattle	98.9	0	O	ME-SA	Ind-2001	d

Most Closely Related Prototype Sequences

see http://www.wrlfmd.org/fmd_genotyping/prototypes.htm

sequence	virus name	Host	% Id.	# Ambig.	serotype	topotype	lineage	sublineage
viba_293	BHU/3/2009	cattle	94.3	0	O	ME-SA	Ind-2001	d
viba_541	OMN/7/2001	bovine	93.4	0	O	ME-SA	Ind-2001	b
viba_705	KUW/3/97	bovine	91.8	0	O	ME-SA	Ind-2001	a
viba_397	UAE/4/2008	gazelle	90.5	0	O	ME-SA	Ind-2001	c
viba_285	UKG/35/2001	porcine	89.8	0	O	ME-SA	PanAsia	
viba_766	IRN/31/2009	cattle	89.4	0	O	ME-SA	PanAsia-2	FAR-09
viba_359	Manisa/TUR/69		89.1	0	O	ME-SA		
viba_719	IRN/88/2009		89.0	0	O	ME-SA	PanAsia-2	ANT-10
viba_650	IRN/8/2005	ovine	89.0	0	O	ME-SA	PanAsia-2	
viba_666	IRN/18/2010	cattle	88.3	0	O	ME-SA	PanAsia-2	BAL-09

Virus sample name:	NEP/12/2016
Sender reference:	16 NP, 2072/073 (137)
Location of origin:	Kathmandu
Country of origin:	Nepal
Date of collection:	15/03/2016
Host species:	cattle
Serotype:	O
Topotype:	ME-SA
Lineage:	Ind-2001
Sublineage:	d
Sequence length:	633
Ambiguities:	0
Material submitted for sequencing:	BTy2
Harvest date of material:	30/07/2016
Primers:	O-1C244F/EUR-2B52R; O-1C272F/EUR-2B52R
Received for sequencing:	11/08/2016
Created:	13/08/2016
Last updated:	13/08/2016
VIBASys IDs: sample 29949, genome 29950, sequence viba_29951, sequencing info 29952	

Most Closely Related Sequences

sequence	virus name	Host	% Id.	# Ambig.	serotype	topotype	lineage	sublineage
viba_29955	NEP/13/2016	cattle	100.0	0	O	ME-SA	Ind-2001	d
viba_29907	NEP/28/2015	cattle	99.7	0	O	ME-SA	Ind-2001	d
viba_26117	NEP/17/2015	cattle	99.7	0	O	ME-SA	Ind-2001	d
viba_29927	NEP/6/2016	cattle	99.7	0	O	ME-SA	Ind-2001	d
viba_26125	NEP/19/2015	cattle	99.7	0	O	ME-SA	Ind-2001	d
viba_29923	NEP/5/2016	cattle	99.5	0	O	ME-SA	Ind-2001	d
viba_29947	NEP/11/2016	goats	99.4	0	O	ME-SA	Ind-2001	d
viba_29943	NEP/10/2016	goats	99.4	0	O	ME-SA	Ind-2001	d
viba_29959	NEP/14/2016	water buffalo	99.4	0	O	ME-SA	Ind-2001	d
viba_23824	SAU/10/2016	bovine	99.1	0	O	ME-SA	Ind-2001	d

Most Closely Related Prototype Sequences

see http://www.wrlfmd.org/fmd_genotyping/prototypes.htm

sequence	virus name	Host	% Id.	# Ambig.	serotype	topotype	lineage	sublineage
viba_293	BHU/3/2009	cattle	94.3	0	O	ME-SA	Ind-2001	d
viba_541	OMN/7/2001	bovine	93.1	0	O	ME-SA	Ind-2001	b
viba_705	KUW/3/97	bovine	91.8	0	O	ME-SA	Ind-2001	a
viba_397	UAE/4/2008	gazelle	90.5	0	O	ME-SA	Ind-2001	c
viba_285	UKG/35/2001	porcine	89.3	0	O	ME-SA	PanAsia	
viba_766	IRN/31/2009	cattle	88.9	0	O	ME-SA	PanAsia-2	FAR-09
viba_359	Manisa/TUR/69		88.6	0	O	ME-SA		
viba_719	IRN/88/2009		88.5	0	O	ME-SA	PanAsia-2	ANT-10
viba_650	IRN/8/2005	ovine	88.5	0	O	ME-SA	PanAsia-2	
viba_860	IRN/6/2015	cattle	87.9	0	O	ME-SA	PanAsia-2	QOM-15

Virus sample name:	NEP/13/2016
Sender reference:	17 NP, 2072/073 (138)
Location of origin:	Kathmandu
Country of origin:	Nepal
Date of collection:	15/03/2016
Host species:	cattle
Serotype:	O
Topotype:	ME-SA
Lineage:	Ind-2001
Sublineage:	d
Sequence length:	633
Ambiguities:	0
Material submitted for sequencing:	BTy1
Harvest date of material:	26/07/2016
Primers:	O-1C244F/EUR-2B52R; O-1C272F/EUR-2B52R
Received for sequencing:	11/08/2016
Created:	13/08/2016
Last updated:	13/08/2016
VIBASys IDs: sample 29953, genome 29954, sequence viba_29955, sequencing info 29956	

Most Closely Related Sequences

sequence	virus name	Host	% Id.	# Ambig.	serotype	topotype	lineage	sublineage
viba_29951	NEP/12/2016	cattle	100.0	0	O	ME-SA	Ind-2001	d
viba_29907	NEP/28/2015	cattle	99.7	0	O	ME-SA	Ind-2001	d
viba_26117	NEP/17/2015	cattle	99.7	0	O	ME-SA	Ind-2001	d
viba_29927	NEP/6/2016	cattle	99.7	0	O	ME-SA	Ind-2001	d
viba_26125	NEP/19/2015	cattle	99.7	0	O	ME-SA	Ind-2001	d
viba_29923	NEP/5/2016	cattle	99.5	0	O	ME-SA	Ind-2001	d
viba_29947	NEP/11/2016	goats	99.4	0	O	ME-SA	Ind-2001	d
viba_29943	NEP/10/2016	goats	99.4	0	O	ME-SA	Ind-2001	d
viba_29959	NEP/14/2016	water buffalo	99.4	0	O	ME-SA	Ind-2001	d
viba_23824	SAU/10/2016	bovine	99.1	0	O	ME-SA	Ind-2001	d

Most Closely Related Prototype Sequences

see http://www.wrlfmd.org/fmd_genotyping/prototypes.htm

sequence	virus name	Host	% Id.	# Ambig.	serotype	topotype	lineage	sublineage
viba_293	BHU/3/2009	cattle	94.3	0	O	ME-SA	Ind-2001	d
viba_541	OMN/7/2001	bovine	93.1	0	O	ME-SA	Ind-2001	b
viba_705	KUW/3/97	bovine	91.8	0	O	ME-SA	Ind-2001	a
viba_397	UAE/4/2008	gazelle	90.5	0	O	ME-SA	Ind-2001	c
viba_285	UKG/35/2001	porcine	89.3	0	O	ME-SA	PanAsia	
viba_766	IRN/31/2009	cattle	88.9	0	O	ME-SA	PanAsia-2	FAR-09
viba_359	Manisa/TUR/69		88.6	0	O	ME-SA		
viba_719	IRN/88/2009		88.5	0	O	ME-SA	PanAsia-2	ANT-10
viba_650	IRN/8/2005	ovine	88.5	0	O	ME-SA	PanAsia-2	
viba_860	IRN/6/2015	cattle	87.9	0	O	ME-SA	PanAsia-2	QOM-15

Virus sample name:	NEP/14/2016
Sender reference:	18 NP, 2072/073 (139)
Location of origin:	Chitwam
Country of origin:	Nepal
Date of collection:	29/03/2016
Host species:	water buffalo
Serotype:	O
Topotype:	ME-SA
Lineage:	Ind-2001
Sublineage:	d
Sequence length:	633
Ambiguities:	0
Material submitted for sequencing:	BTy1
Harvest date of material:	27/07/2016
Primers:	O-1C244F/EUR-2B52R; O-1C272F/EUR-2B52R
Received for sequencing:	11/08/2016
Created:	13/08/2016
Last updated:	13/08/2016
VIBASys IDs: sample 29957, genome 29958, sequence viba_29959, sequencing info 29960	

Most Closely Related Sequences

sequence	virus name	Host	% Id.	# Ambig.	serotype	topotype	lineage	sublineage
viba_29907	NEP/28/2015	cattle	99.7	0	O	ME-SA	Ind-2001	d
viba_26117	NEP/17/2015	cattle	99.7	0	O	ME-SA	Ind-2001	d
viba_29927	NEP/6/2016	cattle	99.7	0	O	ME-SA	Ind-2001	d
viba_26125	NEP/19/2015	cattle	99.7	0	O	ME-SA	Ind-2001	d
viba_29923	NEP/5/2016	cattle	99.5	0	O	ME-SA	Ind-2001	d
viba_29947	NEP/11/2016	goats	99.4	0	O	ME-SA	Ind-2001	d
viba_29943	NEP/10/2016	goats	99.4	0	O	ME-SA	Ind-2001	d
viba_29951	NEP/12/2016	cattle	99.4	0	O	ME-SA	Ind-2001	d
viba_29955	NEP/13/2016	cattle	99.4	0	O	ME-SA	Ind-2001	d
viba_23871	UAE/4/2016	cattle	98.9	0	O	ME-SA	Ind-2001	d

Most Closely Related Prototype Sequences

see http://www.wrlfmd.org/fmd_genotyping/prototypes.htm

sequence	virus name	Host	% Id.	# Ambig.	serotype	topotype	lineage	sublineage
viba_293	BHU/3/2009	cattle	94.3	0	O	ME-SA	Ind-2001	d
viba_541	OMN/7/2001	bovine	93.1	0	O	ME-SA	Ind-2001	b
viba_705	KUW/3/97	bovine	91.8	0	O	ME-SA	Ind-2001	a
viba_397	UAE/4/2008	gazelle	90.5	0	O	ME-SA	Ind-2001	c
viba_766	IRN/31/2009	cattle	89.3	0	O	ME-SA	PanAsia-2	FAR-09
viba_285	UKG/35/2001	porcine	89.3	0	O	ME-SA	PanAsia	
viba_359	Manisa/TUR/69		88.9	0	O	ME-SA		
viba_719	IRN/88/2009		88.8	0	O	ME-SA	PanAsia-2	ANT-10
viba_650	IRN/8/2005	ovine	88.8	0	O	ME-SA	PanAsia-2	
viba_666	IRN/18/2010	cattle	88.2	0	O	ME-SA	PanAsia-2	BAL-09

Virus sample name:	NEP/17/2016
Sender reference:	21 NP, 2072/073 (153)
Location of origin:	Ramechhap
Country of origin:	Nepal
Date of collection:	09/06/2016
Host species:	cattle
Serotype:	O
Topotype:	ME-SA
Lineage:	Ind-2001
Sublineage:	d
Sequence length:	633
Ambiguities:	0
Material submitted for sequencing:	BTy1
Harvest date of material:	27/07/2016
Primers:	O-1C244F/EUR-2B52R; O-1C272F/EUR-2B52R
Received for sequencing:	11/08/2016
Created:	13/08/2016
Last updated:	13/08/2016
VIBASys IDs: sample 29961, genome 29962, sequence viba_29963, sequencing info 29964	

Most Closely Related Sequences

sequence	virus name	Host	% Id.	# Ambig.	serotype	topotype	lineage	sublineage
viba_29907	NEP/28/2015	cattle	99.1	0	O	ME-SA	Ind-2001	d
viba_26117	NEP/17/2015	cattle	99.1	0	O	ME-SA	Ind-2001	d
viba_23820	SAU/7/2016	bovine	99.1	0	O	ME-SA	Ind-2001	d
viba_29927	NEP/6/2016	cattle	99.1	0	O	ME-SA	Ind-2001	d
viba_26125	NEP/19/2015	cattle	99.1	0	O	ME-SA	Ind-2001	d
viba_29923	NEP/5/2016	cattle	98.9	0	O	ME-SA	Ind-2001	d
viba_23812	SAU/2/2016	bovine	98.9	0	O	ME-SA	Ind-2001	d
viba_23816	SAU/3/2016	bovine	98.9	0	O	ME-SA	Ind-2001	d
viba_29931	NEP/7/2016	cattle	98.9	0	O	ME-SA	Ind-2001	d
viba_29947	NEP/11/2016	goats	98.7	0	O	ME-SA	Ind-2001	d

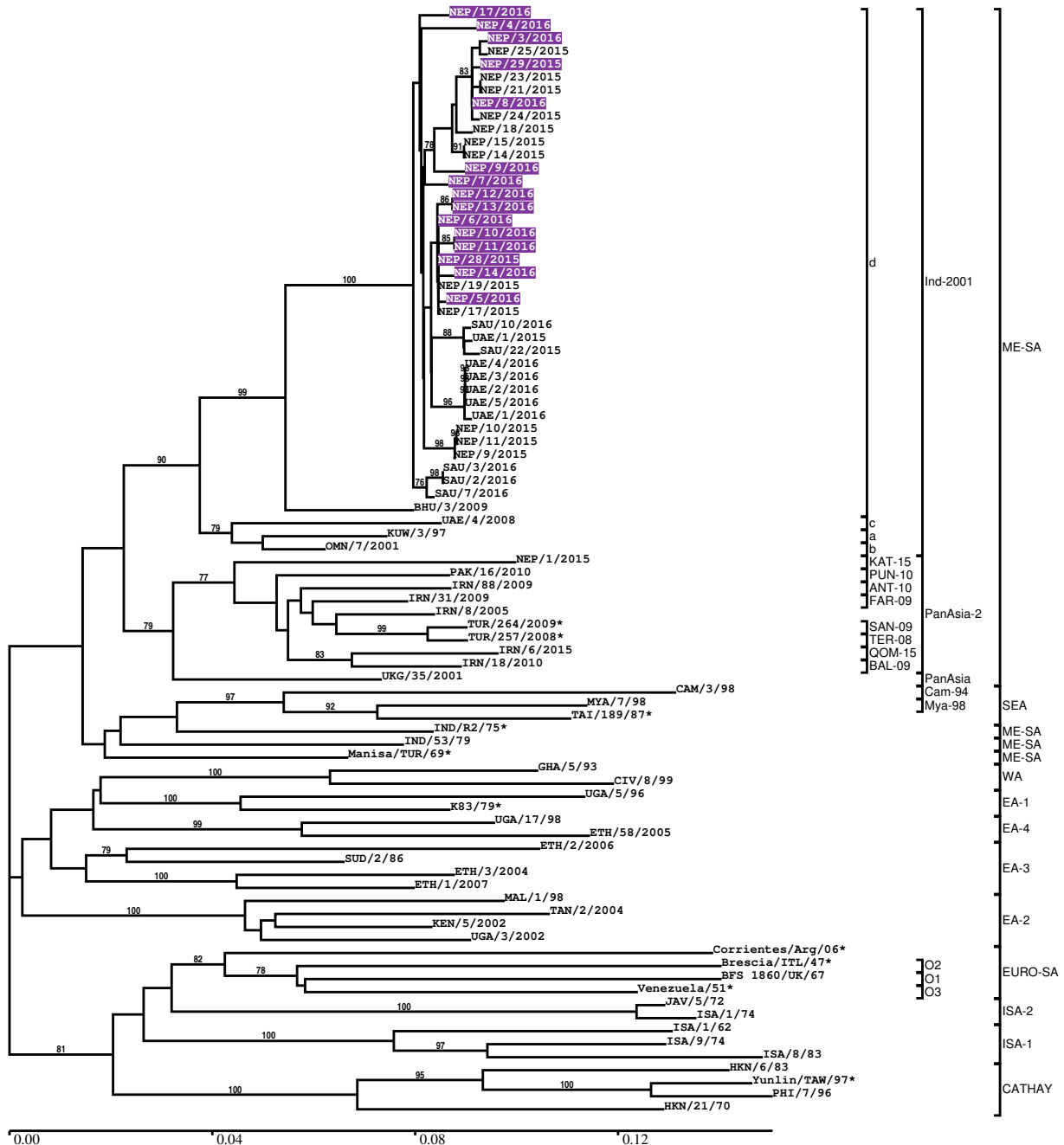
Most Closely Related Prototype Sequences

see http://www.wrlfmd.org/fmd_genotyping/prototypes.htm

sequence	virus name	Host	% Id.	# Ambig.	serotype	topotype	lineage	sublineage
viba_293	BHU/3/2009	cattle	94.3	0	O	ME-SA	Ind-2001	d
viba_541	OMN/7/2001	bovine	93.1	0	O	ME-SA	Ind-2001	b
viba_705	KUW/3/97	bovine	91.8	0	O	ME-SA	Ind-2001	a
viba_397	UAE/4/2008	gazelle	90.5	0	O	ME-SA	Ind-2001	c
viba_285	UKG/35/2001	porcine	89.4	0	O	ME-SA	PanAsia	
viba_766	IRN/31/2009	cattle	88.8	0	O	ME-SA	PanAsia-2	FAR-09
viba_650	IRN/8/2005	ovine	88.6	0	O	ME-SA	PanAsia-2	
viba_359	Manisa/TUR/69		88.2	0	O	ME-SA		
viba_719	IRN/88/2009		88.0	0	O	ME-SA	PanAsia-2	ANT-10
viba_666	IRN/18/2010	cattle	88.0	0	O	ME-SA	PanAsia-2	BAL-09

Report on FMDV O in Nepal in 2015, 2016

Batch: WRLFMD/2016/00025



Sequence alignment method:	muscle (default parameters)
Phylogeny reconstruction method:	fdnadist, fneighbor
Number of bootstrap samples:	1000
Displaying bootstrap values above:	70.0%
Number of sequences in tree capped at:	100
*, not a WRLFMD Reference Number	

Sequences in the Phylogenetic Tree

All sequences in the tree are in taxonomic group FMDV/O

label	accession	host(s)	lab	country	taxonomic information
NEP/17/2016	n/a	cattle	WRLFMD	Nepal	ME-SA/Ind-2001/d
NEP/4/2016	n/a	water buffalo	WRLFMD	Nepal	ME-SA/Ind-2001/d
NEP/3/2016	n/a	water buffalo	WRLFMD	Nepal	ME-SA/Ind-2001/d
NEP/25/2015	n/a	cattle	WRLFMD	Nepal	ME-SA/Ind-2001/d
NEP/29/2015	n/a	cattle	WRLFMD	Nepal	ME-SA/Ind-2001/d
NEP/23/2015	n/a	cattle	WRLFMD	Nepal	ME-SA/Ind-2001/d
NEP/21/2015	n/a	cattle	WRLFMD	Nepal	ME-SA/Ind-2001/d
NEP/8/2016	n/a	cattle	WRLFMD	Nepal	ME-SA/Ind-2001/d
NEP/24/2015	n/a	cattle	WRLFMD	Nepal	ME-SA/Ind-2001/d
NEP/18/2015	n/a	porcine	WRLFMD	Nepal	ME-SA/Ind-2001/d
NEP/15/2015	n/a	cattle	WRLFMD	Nepal	ME-SA/Ind-2001/d
NEP/14/2015	n/a	cattle	WRLFMD	Nepal	ME-SA/Ind-2001/d
NEP/9/2016	n/a	porcine	WRLFMD	Nepal	ME-SA/Ind-2001/d
NEP/7/2016	n/a	cattle	WRLFMD	Nepal	ME-SA/Ind-2001/d
NEP/12/2016	n/a	cattle	WRLFMD	Nepal	ME-SA/Ind-2001/d
NEP/13/2016	n/a	cattle	WRLFMD	Nepal	ME-SA/Ind-2001/d
NEP/6/2016	n/a	cattle	WRLFMD	Nepal	ME-SA/Ind-2001/d
NEP/10/2016	n/a	goats	WRLFMD	Nepal	ME-SA/Ind-2001/d
NEP/11/2016	n/a	goats	WRLFMD	Nepal	ME-SA/Ind-2001/d
NEP/28/2015	n/a	cattle	WRLFMD	Nepal	ME-SA/Ind-2001/d
NEP/14/2016	n/a	water buffalo	WRLFMD	Nepal	ME-SA/Ind-2001/d
NEP/19/2015	n/a	cattle	WRLFMD	Nepal	ME-SA/Ind-2001/d
NEP/5/2016	n/a	cattle	WRLFMD	Nepal	ME-SA/Ind-2001/d
NEP/17/2015	n/a	cattle	WRLFMD	Nepal	ME-SA/Ind-2001/d
SAU/10/2016	n/a	bovine	WRLFMD	Saudi Arabia	ME-SA/Ind-2001/d
UAE/1/2015	n/a	gazelle	WRLFMD	United Arab Emirates	ME-SA/Ind-2001/d
SAU/22/2015	n/a	bovine	WRLFMD	Saudi Arabia	ME-SA/Ind-2001/d
UAE/4/2016	n/a	cattle	WRLFMD	United Arab Emirates	ME-SA/Ind-2001/d
UAE/3/2016	n/a	cattle	WRLFMD	United Arab Emirates	ME-SA/Ind-2001/d
UAE/2/2016	n/a	cattle	WRLFMD	United Arab Emirates	ME-SA/Ind-2001/d
UAE/5/2016	n/a	cattle	WRLFMD	United Arab Emirates	ME-SA/Ind-2001/d
UAE/1/2016	n/a	cattle	WRLFMD	United Arab Emirates	ME-SA/Ind-2001/d
NEP/10/2015	n/a	cattle	WRLFMD	Nepal	ME-SA/Ind-2001/d
NEP/11/2015	n/a	cattle	WRLFMD	Nepal	ME-SA/Ind-2001/d
NEP/9/2015	n/a	cattle	WRLFMD	Nepal	ME-SA/Ind-2001/d
SAU/3/2016	n/a	bovine	WRLFMD	Saudi Arabia	ME-SA/Ind-2001/d
SAU/2/2016	n/a	bovine	WRLFMD	Saudi Arabia	ME-SA/Ind-2001/d
SAU/7/2016	n/a	bovine	WRLFMD	Saudi Arabia	ME-SA/Ind-2001/d
BHU/3/2009	KM921814	cattle	WRLFMD	Bhutan	ME-SA/Ind-2001/d
UAE/4/2008	KM921876	gazelle	WRLFMD	United Arab Emirates	ME-SA/Ind-2001/c
KUW/3/97	DQ164904	bovine	WRLFMD	Kuwait	ME-SA/Ind-2001/a
OMN/7/2001	DQ164941	bovine	WRLFMD	Oman	ME-SA/Ind-2001/b
NEP/1/2015	n/a	cattle	WRLFMD	Nepal	ME-SA/PanAsia-2/KAT-15
PAK/16/2010	n/a	cattle	WRLFMD	Pakistan	ME-SA/PanAsia-2/PUN-10
IRN/88/2009	n/a	n/a	WRLFMD	Iran	ME-SA/PanAsia-2/ANT-10
IRN/31/2009	n/a	cattle	WRLFMD	Iran	ME-SA/PanAsia-2/FAR-09
IRN/8/2005	n/a	ovine	WRLFMD	Iran	ME-SA/PanAsia-2
TUR/264/2009*	n/a	n/a	FMDI-Ankara	Turkey	ME-SA/PanAsia-2/SAN-09
TUR/257/2008*	n/a	n/a	FMDI-Ankara	Turkey	ME-SA/PanAsia-2/TER-08
IRN/6/2015	n/a	cattle	WRLFMD	Iran	ME-SA/PanAsia-2/QOM-15
IRN/18/2010	n/a	cattle	WRLFMD	Iran	ME-SA/PanAsia-2/BAL-09
UKG/35/2001	AJ539141	porcine	PIADC	United Kingdom	ME-SA/PanAsia
CAM/3/98	AJ294910	bovine	WRLFMD	Cambodia	SEA/Cam-94
MYA/7/98	DQ164925	bovine	WRLFMD	Myanmar	SEA/Mya-98
TAI/189/87*	n/a	bovine	TRRL	Thailand	SEA

continued on next page

label	accession	host(s)	lab	country	taxonomic information
IND/R2/75*	AF204276	n/a	PD-FMD	India	ME-SA
IND/53/79	AF292107	bovine	PD-FMD	India	ME-SA
Manisa/TUR/69*	AY593823	n/a	PIADC	Turkey	ME-SA
GHA/5/93	AJ303488	bovine	WRLFMD	Ghana	WA
CIV/8/99	AJ303485	bovine	WRLFMD	Cote d'Ivoire	WA
UGA/5/96	AJ296327	bovine	WRLFMD	Uganda	EA-1
K83/79*	AJ303511	n/a	WRLFMD	Kenya	EA-1
UGA/17/98	HM211075	n/a	WRLFMD	Uganda	EA-4
ETH/58/2005	FJ798141	bovine	WRLFMD	Ethiopia	EA-4
ETH/2/2006	FJ798127	bovine	WRLFMD	Ethiopia	EA-3
SUD/2/86	DQ165075	bovine	WRLFMD	Sudan	EA-3
ETH/3/2004	FJ798109	cattle	WRLFMD	Ethiopia	EA-3
ETH/1/2007	FJ798137	cattle	WRLFMD	Ethiopia	EA-3
MAL/1/98	DQ165074	n/a	WRLFMD	Malawi	EA-2
TAN/2/2004	KF561679	bovine	WRLFMD	Tanzania	EA-2
KEN/5/2002	DQ165073	bovine	WRLFMD	Kenya	EA-2
UGA/3/2002	DQ165077	n/a	WRLFMD	Uganda	EA-2
Corrientes/Arg/06*	DQ834727	n/a	PAFMDC	Argentina	EURO-SA
Brescia/ITL/47*	M55287	n/a	BFAV	Italy	EURO-SA/O2
BFS 1860/UK/67	AY593815	bovine	PIADC	United Kingdom (BFS)	EURO-SA/O1
Venezuela/51*	AJ004645	n/a	BFAV	Venezuela	EURO-SA/O3
JAV/5/72	AJ303509	n/a	WRLFMD	Java	ISA-2
ISA/1/74	AJ303501	bovine	WRLFMD	Indonesia	ISA-2
ISA/1/62	AJ303500	n/a	WRLFMD	Indonesia	ISA-1
ISA/9/74	AJ303502	bovine	WRLFMD	Indonesia	ISA-1
ISA/8/83	AJ303503	bovine	WRLFMD	Indonesia	ISA-1
HKN/6/83	AJ294919	bovine	WRLFMD	Hong Kong SAR	CATHAY
Yunlin/TAW/97*	AF308157	porcine	PIADC	Taiwan	CATHAY
PHI/7/96	AJ294926	porcine	WRLFMD	Philippines	CATHAY
HKN/21/70	AJ294911	porcine	WRLFMD	Hong Kong SAR	CATHAY

*, not a WRLFMD Reference Number

n/a, not available