

FAO World Reference Laboratory for Foot-and-Mouth Disease (WRLFMD)

Genotyping Report

Report Date for this Batch: 25 April 2013

FMDV type A

Country: Tanzania

Period: 2012-2013

No. of samples: 15

BATCH: WRLFMD/2013/00005



The contents of this report are copyright and should not be reproduced without permission

© The Pirbright Institute

FAO World Reference Laboratory for FMD Genotyping Report

IAH-P-EP-MEG-FOR-005-3

Page 1 of 1

Serotype: A	Report date: 24/04/2013
WRLFMD Ref No: TAN/56/2012	Reported by: N.J. Knowles
Batch No: WRLFMD/2013/00005	Checked by: D.P. King
Sender Ref: 8110	
Location: Serengeti, Tanzania	Topotype: AFRICA
Date collected: 28/06/2012	Genotype/strain: G-I
Date received by WRLFMD: 13/03/2013	Sequence filename: TAN12-56.SEQ
Date received for sequencing: 16/04/2013	Date sequence last updated: 24/04/2013
Species: Cattle	No. of Nt determined: 639
Material used: BTy2 26/03/2013	No. of ambiguities: 0
Region sequenced: VP1	Gene length: 639
RT-PCR primers: A-1C562F/EUR-2B52R	Total no. of comparisons: 1602
A-1C612F/EUR-2B52R	Min. no. of nt for comparison: 600
	Total turn-around time: 42 days
	Sequencing time: 8 days
Comments:	

Most Closely Related Viruses

Pos.	Virus name	Filename	No. nt comp.	No. nt match.	No. of ambig.	% Id.	% Diff.	Topotype	Strain
1	A/TAN/1/2013	TAN13-01	639	639	0	100.00	0.00	AFRICA	G-I
2	A/TAN/61/2012	TAN12-61	639	639	0	100.00	0.00	AFRICA	G-I
3	A/TAN/65/2012	TAN12-65	639	639	0	100.00	0.00	AFRICA	G-I
4	A/TAN/66/2012	TAN12-66	639	639	0	100.00	0.00	AFRICA	G-I
5	A/TAN/2/2013	TAN13-02	639	638	0	99.84	0.16	AFRICA	G-I
6	A/TAN/3/2013	TAN13-03	639	637	0	99.69	0.31	AFRICA	G-I
7	A/TAN/60/2012	TAN12-60	639	637	0	99.69	0.31	AFRICA	G-I
8	A/TAN/70/2012	TAN12-70	636	626	0	98.43	1.57	AFRICA	G-I
9	A/TAN/71/2012	TAN12-71	636	626	0	98.43	1.57	AFRICA	G-I
10	A/TAN/67/2012	TAN12-67	636	625	0	98.27	1.73	AFRICA	G-I

Most Closely Related Reference Viruses

(see http://www.wrlfmd.org/fmd_genotyping/prototypes.htm)

Pos.	Virus name	Filename	No. nt comp.	No. nt match.	No. of ambig.	% Id.	% Diff.	Topotype	Strain
1	A/KEN/42/66 (K18/66)	KEN66-42	639	542	0	84.82	15.18	AFRICA	G-I
2	A/UGA/13/66	UGA66-13	639	529	0	82.79	17.21	AFRICA	G-VII
3	A21/Lumbwa/KEN/64 (AY593761)	KEN64-AA	639	529	0	82.79	17.21	AFRICA	G-III
4	A/GHA/16/73	GHA73-16	636	525	0	82.55	17.45	AFRICA	G-VI
5	A/NGR/2/73	NGR73-02	639	524	0	82.00	18.00	AFRICA	G-V
6	A12/UK/119/32 (M10975)	UKG32119	639	517	0	80.91	19.09	EURO-SA	A ₁₂
7	A/EGY/1/72 (EF208756)	EGY72-01	639	515	0	80.59	19.41	AFRICA	G-II
8	A/SUD/3/77 (GU566064)	SUD77-03	639	515	0	80.59	19.41	AFRICA	G-IV
9	A/IRN/15/2012	IRN12-15	639	509	0	79.66	20.34	ASIA	Iran-05 ^{SIS-12}
10	A15/Bangkok/TAI/60 (AY593755)	TAI60-D	639	507	0	79.34	20.66	ASIA	A15

nt, nucleotides

*, not a WRLFMD reference number

Assembled with Report Generator v4.1

© The Pirbright Institute (not to be reproduced without permission)

FAO World Reference Laboratory for FMD Genotyping Report

IAH-P-EP-MEG-FOR-005-3

Page 1 of 1

Serotype: A	Report date: 24/04/2013
WRLFMD Ref No: TAN/60/2012	Reported by: N.J. Knowles
Batch No: WRLFMD/2013/00005	Checked by: D.P. King
Sender Ref: 6654	
Location: Serengeti, Tanzania	Topotype: AFRICA
Date collected: 14/08/2012	Genotype/strain: G-I
Date received by WRLFMD: 13/03/2013	Sequence filename: TAN12-60.SEQ
Date received for sequencing: 16/04/2013	Date sequence last updated: 24/04/2013
Species: Cattle	No. of Nt determined: 639
Material used: BTy2 26/03/2013	No. of ambiguities: 0
Region sequenced: VP1	Gene length: 639
RT-PCR primers: A-1C562F/EUR-2B52R	Total no. of comparisons: 1602
A-1C612F/EUR-2B52R	Min. no. of nt for comparison: 600
	Total turn-around time: 42 days
	Sequencing time: 8 days
Comments:	

Most Closely Related Viruses									
Pos.	Virus name	Filename	No. nt comp.	No. nt match.	No. of ambig.	% Id.	% Diff.	Topotype	Strain
1	A/TAN/1/2013	TAN13-01	639	637	0	99.69	0.31	AFRICA	G-I
2	A/TAN/56/2012	TAN12-56	639	637	0	99.69	0.31	AFRICA	G-I
3	A/TAN/61/2012	TAN12-61	639	637	0	99.69	0.31	AFRICA	G-I
4	A/TAN/65/2012	TAN12-65	639	637	0	99.69	0.31	AFRICA	G-I
5	A/TAN/66/2012	TAN12-66	639	637	0	99.69	0.31	AFRICA	G-I
6	A/TAN/2/2013	TAN13-02	639	636	0	99.53	0.47	AFRICA	G-I
7	A/TAN/3/2013	TAN13-03	639	635	0	99.37	0.63	AFRICA	G-I
8	A/TAN/70/2012	TAN12-70	636	626	0	98.43	1.57	AFRICA	G-I
9	A/TAN/71/2012	TAN12-71	636	626	0	98.43	1.57	AFRICA	G-I
10	A/TAN/67/2012	TAN12-67	636	625	0	98.27	1.73	AFRICA	G-I
Most Closely Related Reference Viruses									
(see http://www.wrlfmd.org/fmd_genotyping/prototypes.htm)									
Pos.	Virus name	Filename	No. nt comp.	No. nt match.	No. of ambig.	% Id.	% Diff.	Topotype	Strain
1	A/KEN/42/66 (K18/66)	KEN66-42	639	542	0	84.82	15.18	AFRICA	G-I
2	A/UGA/13/66	UGA66-13	639	529	0	82.79	17.21	AFRICA	G-VII
3	A21/Lumbwa/KEN/64 (AY593761)	KEN64-AA	639	529	0	82.79	17.21	AFRICA	G-III
4	A/GHA/16/73	GHA73-16	636	525	0	82.55	17.45	AFRICA	G-VI
5	A/NGR/2/73	NGR73-02	639	524	0	82.00	18.00	AFRICA	G-V
6	A12/UK/119/32 (M10975)	UKG32119	639	517	0	80.91	19.09	EURO-SA	A ₁₂
7	A/EGY/1/72 (EF208756)	EGY72-01	639	515	0	80.59	19.41	AFRICA	G-II
8	A/SUD/3/77 (GU566064)	SUD77-03	639	515	0	80.59	19.41	AFRICA	G-IV
9	A/IRN/15/2012	IRN12-15	639	509	0	79.66	20.34	ASIA	Iran-05 ^{SIS-12}
10	A15/Bangkok/TAI/60 (AY593755)	TAI60-D	639	507	0	79.34	20.66	ASIA	A15

nt, nucleotides

*, not a WRLFMD reference number

Assembled with Report Generator v4.1

© The Pirbright Institute (not to be reproduced without permission)

FAO World Reference Laboratory for FMD Genotyping Report

IAH-P-EP-MEG-FOR-005-3

Page 1 of 1

Serotype: A	Report date: 24/04/2013
WRLFMD Ref No: TAN/61/2012	Reported by: N.J. Knowles
Batch No: WRLFMD/2013/00005	Checked by: D.P. King
Sender Ref: 8195	
Location: Serengeti, Tanzania	Topotype: AFRICA
Date collected: 15/08/2012	Genotype/strain: G-I
Date received by WRLFMD: 13/03/2013	Sequence filename: TAN12-61.SEQ
Date received for sequencing: 16/04/2013	Date sequence last updated: 24/04/2013
Species: Cattle	No. of Nt determined: 639
Material used: BTy2 26/03/2013	No. of ambiguities: 0
Region sequenced: VP1	Gene length: 639
RT-PCR primers: A-1C562F/EUR-2B52R	Total no. of comparisons: 1602
A-1C612F/EUR-2B52R	Min. no. of nt for comparison: 600
	Total turn-around time: 42 days
	Sequencing time: 8 days
Comments:	

Most Closely Related Viruses									
Pos.	Virus name	Filename	No. nt comp.	No. nt match.	No. of ambig.	% Id.	% Diff.	Topotype	Strain
1	A/TAN/1/2013	TAN13-01	639	639	0	100.00	0.00	AFRICA	G-I
2	A/TAN/56/2012	TAN12-56	639	639	0	100.00	0.00	AFRICA	G-I
3	A/TAN/65/2012	TAN12-65	639	639	0	100.00	0.00	AFRICA	G-I
4	A/TAN/66/2012	TAN12-66	639	639	0	100.00	0.00	AFRICA	G-I
5	A/TAN/2/2013	TAN13-02	639	638	0	99.84	0.16	AFRICA	G-I
6	A/TAN/3/2013	TAN13-03	639	637	0	99.69	0.31	AFRICA	G-I
7	A/TAN/60/2012	TAN12-60	639	637	0	99.69	0.31	AFRICA	G-I
8	A/TAN/70/2012	TAN12-70	636	626	0	98.43	1.57	AFRICA	G-I
9	A/TAN/71/2012	TAN12-71	636	626	0	98.43	1.57	AFRICA	G-I
10	A/TAN/67/2012	TAN12-67	636	625	0	98.27	1.73	AFRICA	G-I
Most Closely Related Reference Viruses									
(see http://www.wrlfmd.org/find_genotyping/prototypes.htm)									
Pos.	Virus name	Filename	No. nt comp.	No. nt match.	No. of ambig.	% Id.	% Diff.	Topotype	Strain
1	A/KEN/42/66 (K18/66)	KEN66-42	639	542	0	84.82	15.18	AFRICA	G-I
2	A/UGA/13/66	UGA66-13	639	529	0	82.79	17.21	AFRICA	G-VII
3	A21/Lumbwa/KEN/64 (AY593761)	KEN64-AA	639	529	0	82.79	17.21	AFRICA	G-III
4	A/GHA/16/73	GHA73-16	636	525	0	82.55	17.45	AFRICA	G-VI
5	A/NGR/2/73	NGR73-02	639	524	0	82.00	18.00	AFRICA	G-V
6	A12/UK/119/32 (M10975)	UKG32119	639	517	0	80.91	19.09	EURO-SA	A ₁₂
7	A/EGY/1/72 (EF208756)	EGY72-01	639	515	0	80.59	19.41	AFRICA	G-II
8	A/SUD/3/77 (GU566064)	SUD77-03	639	515	0	80.59	19.41	AFRICA	G-IV
9	A/IRN/15/2012	IRN12-15	639	509	0	79.66	20.34	ASIA	Iran-05 ^{SIS-12}
10	A15/Bangkok/TAI/60 (AY593755)	TAI60--D	639	507	0	79.34	20.66	ASIA	A15

nt, nucleotides

*, not a WRLFMD reference number

Assembled with Report Generator v4.1

© The Pirbright Institute (not to be reproduced without permission)

FAO World Reference Laboratory for FMD Genotyping Report

IAH-P-EP-MEG-FOR-005-3

Page 1 of 1

Serotype: A	Report date: 24/04/2013
WRLFMD Ref No: TAN/65/2012	Reported by: N.J. Knowles
Batch No: WRLFMD/2013/00005	Checked by: D.P. King
Sender Ref: 8276	
Location: Serengeti, Tanzania	Topotype: AFRICA
Date collected: 18/08/2012	Genotype/strain: G-I
Date received by WRLFMD: 13/03/2013	Sequence filename: TAN12-65.SEQ
Date received for sequencing: 16/04/2013	Date sequence last updated: 24/04/2013
Species: Cattle	No. of Nt determined: 639
Material used: BTy1 24/03/2013	No. of ambiguities: 0
Region sequenced: VP1	Gene length: 639
RT-PCR primers: A-1C562F/EUR-2B52R	Total no. of comparisons: 1602
A-1C612F/EUR-2B52R	Min. no. of nt for comparison: 600
	Total turn-around time: 42 days
	Sequencing time: 8 days
Comments:	

Most Closely Related Viruses									
Pos.	Virus name	Filename	No. nt comp.	No. nt match.	No. of ambig.	% Id.	% Diff.	Topotype	Strain
1	A/TAN/1/2013	TAN13-01	639	639	0	100.00	0.00	AFRICA	G-I
2	A/TAN/56/2012	TAN12-56	639	639	0	100.00	0.00	AFRICA	G-I
3	A/TAN/61/2012	TAN12-61	639	639	0	100.00	0.00	AFRICA	G-I
4	A/TAN/66/2012	TAN12-66	639	639	0	100.00	0.00	AFRICA	G-I
5	A/TAN/2/2013	TAN13-02	639	638	0	99.84	0.16	AFRICA	G-I
6	A/TAN/3/2013	TAN13-03	639	637	0	99.69	0.31	AFRICA	G-I
7	A/TAN/60/2012	TAN12-60	639	637	0	99.69	0.31	AFRICA	G-I
8	A/TAN/70/2012	TAN12-70	636	626	0	98.43	1.57	AFRICA	G-I
9	A/TAN/71/2012	TAN12-71	636	626	0	98.43	1.57	AFRICA	G-I
10	A/TAN/67/2012	TAN12-67	636	625	0	98.27	1.73	AFRICA	G-I
Most Closely Related Reference Viruses									
(see http://www.wrlfind.org/find_genotyping/prototypes.htm)									
Pos.	Virus name	Filename	No. nt comp.	No. nt match.	No. of ambig.	% Id.	% Diff.	Topotype	Strain
1	A/KEN/42/66 (K18/66)	KEN66-42	639	542	0	84.82	15.18	AFRICA	G-I
2	A/UGA/13/66	UGA66-13	639	529	0	82.79	17.21	AFRICA	G-VII
3	A21/Lumbwa/KEN/64 (AY593761)	KEN64-AA	639	529	0	82.79	17.21	AFRICA	G-III
4	A/GHA/16/73	GHA73-16	636	525	0	82.55	17.45	AFRICA	G-VI
5	A/NGR/2/73	NGR73-02	639	524	0	82.00	18.00	AFRICA	G-V
6	A12/UK/119/32 (M10975)	UKG32119	639	517	0	80.91	19.09	EURO-SA	A ₁₂
7	A/EGY/1/72 (EF208756)	EGY72-01	639	515	0	80.59	19.41	AFRICA	G-II
8	A/SUD/3/77 (GU566064)	SUD77-03	639	515	0	80.59	19.41	AFRICA	G-IV
9	A/IRN/15/2012	IRN12-15	639	509	0	79.66	20.34	ASIA	Iran-05 ^{SIS-12}
10	A15/Bangkok/TAI/60 (AY593755)	TAI60-D	639	507	0	79.34	20.66	ASIA	A15

nt, nucleotides

*, not a WRLFMD reference number

Assembled with Report Generator v4.1

© The Pirbright Institute (not to be reproduced without permission)

FAO World Reference Laboratory for FMD Genotyping Report

IAH-P-EP-MEG-FOR-005-3

Page 1 of 1

Serotype: A	Report date: 24/04/2013
WRLFMD Ref No: TAN/66/2012	Reported by: N.J. Knowles
Batch No: WRLFMD/2013/00005	Checked by: D.P. King
Sender Ref: 8274	
Location: Serengeti, Tanzania	Topotype: AFRICA
Date collected: 18/08/2012	Genotype/strain: G-I
Date received by WRLFMD: 13/03/2013	Sequence filename: TAN12-66.SEQ
Date received for sequencing: 16/04/2013	Date sequence last updated: 24/04/2013
Species: Cattle	No. of Nt determined: 639
Material used: BTy1 24/03/2013	No. of ambiguities: 0
Region sequenced: VP1	Gene length: 639
RT-PCR primers: A-1C562F/EUR-2B52R	Total no. of comparisons: 1602
A-1C612F/EUR-2B52R	Min. no. of nt for comparison: 600
	Total turn-around time: 42 days
	Sequencing time: 8 days
Comments:	

Most Closely Related Viruses									
Pos.	Virus name	Filename	No. nt comp.	No. nt match.	No. of ambig.	% Id.	% Diff.	Topotype	Strain
1	A/TAN/1/2013	TAN13-01	639	639	0	100.00	0.00	AFRICA	G-I
2	A/TAN/56/2012	TAN12-56	639	639	0	100.00	0.00	AFRICA	G-I
3	A/TAN/61/2012	TAN12-61	639	639	0	100.00	0.00	AFRICA	G-I
4	A/TAN/65/2012	TAN12-65	639	639	0	100.00	0.00	AFRICA	G-I
5	A/TAN/2/2013	TAN13-02	639	638	0	99.84	0.16	AFRICA	G-I
6	A/TAN/3/2013	TAN13-03	639	637	0	99.69	0.31	AFRICA	G-I
7	A/TAN/60/2012	TAN12-60	639	637	0	99.69	0.31	AFRICA	G-I
8	A/TAN/70/2012	TAN12-70	636	626	0	98.43	1.57	AFRICA	G-I
9	A/TAN/71/2012	TAN12-71	636	626	0	98.43	1.57	AFRICA	G-I
10	A/TAN/67/2012	TAN12-67	636	625	0	98.27	1.73	AFRICA	G-I

Most Closely Related Reference Viruses									
(see http://www.wrlfind.org/fmd_genotyping/prototypes.htm)									
Pos.	Virus name	Filename	No. nt comp.	No. nt match.	No. of ambig.	% Id.	% Diff.	Topotype	Strain
1	A/KEN/42/66 (K18/66)	KEN66-42	639	542	0	84.82	15.18	AFRICA	G-I
2	A/UGA/13/66	UGA66-13	639	529	0	82.79	17.21	AFRICA	G-VII
3	A21/Lumbwa/KEN/64 (AY593761)	KEN64-AA	639	529	0	82.79	17.21	AFRICA	G-III
4	A/GHA/16/73	GHA73-16	636	525	0	82.55	17.45	AFRICA	G-VI
5	A/NGR/2/73	NGR73-02	639	524	0	82.00	18.00	AFRICA	G-V
6	A12/UK/119/32 (M10975)	UKG32119	639	517	0	80.91	19.09	EURO-SA	A ₁₂
7	A/EGY/1/72 (EF208756)	EGY72-01	639	515	0	80.59	19.41	AFRICA	G-II
8	A/SUD/3/77 (GU566064)	SUD77-03	639	515	0	80.59	19.41	AFRICA	G-IV
9	A/IRN/15/2012	IRN12-15	639	509	0	79.66	20.34	ASIA	Iran-05 ^{SIS-12}
10	A15/Bangkok/TAI/60 (AY593755)	TAI60--D	639	507	0	79.34	20.66	ASIA	A15

nt, nucleotides

*, not a WRLFMD reference number

Assembled with Report Generator v4.1

© The Pirbright Institute (not to be reproduced without permission)

FAO World Reference Laboratory for FMD Genotyping Report

IAH-P-EP-MEG-FOR-005-3

Page 1 of 1

Serotype: A	Report date: 24/04/2013
WRLFMD Ref No: TAN/67/2012	Reported by: N.J. Knowles
Batch No: WRLFMD/2013/00005	Checked by: D.P. King
Sender Ref: 8425	
Location: Serengeti, Tanzania	Topotype: AFRICA
Date collected: 15/09/2012	Genotype/strain: G-I
Date received by WRLFMD: 13/03/2013	Sequence filename: TAN12-67.SEQ
Date received for sequencing: 16/04/2013	Date sequence last updated: 24/04/2013
Species: Cattle	No. of Nt determined: 636
Material used: BTy1 26/03/2013	No. of ambiguities: 0
Region sequenced: VP1	Gene length: 636
RT-PCR primers: A-1C562F/EUR-2B52R	Total no. of comparisons: 1598
A-1C612F/EUR-2B52R	Min. no. of nt for comparison: 600
	Total turn-around time: 42 days
	Sequencing time: 8 days
Comments:	

Most Closely Related Viruses									
Pos.	Virus name	Filename	No. nt comp.	No. nt match.	No. of ambig.	% Id.	% Diff.	Topotype	Strain
1	A/TAN/68/2012	TAN12-68	636	636	0	100.00	0.00	AFRICA	G-I
2	A/TAN/70/2012	TAN12-70	636	635	0	99.84	0.16	AFRICA	G-I
3	A/TAN/71/2012	TAN12-71	636	635	0	99.84	0.16	AFRICA	G-I
4	A/TAN/69/2012	TAN12-69	636	633	0	99.53	0.47	AFRICA	G-I
5	A/TAN/72/2012	TAN12-72	636	633	0	99.53	0.47	AFRICA	G-I
6	A/TAN/73/2012	TAN12-73	636	632	0	99.37	0.63	AFRICA	G-I
7	A/TAN/1/2013	TAN13-01	636	625	0	98.27	1.73	AFRICA	G-I
8	A/TAN/56/2012	TAN12-56	636	625	0	98.27	1.73	AFRICA	G-I
9	A/TAN/60/2012	TAN12-60	636	625	0	98.27	1.73	AFRICA	G-I
10	A/TAN/61/2012	TAN12-61	636	625	0	98.27	1.73	AFRICA	G-I
Most Closely Related Reference Viruses									
(see http://www.wrlfmd.org/fmd_genotyping/prototypes.htm)									
Pos.	Virus name	Filename	No. nt comp.	No. nt match.	No. of ambig.	% Id.	% Diff.	Topotype	Strain
1	A/KEN/42/66 (K18/66)	KEN66-42	636	538	0	84.59	15.41	AFRICA	G-I
2	A/UGA/13/66	UGA66-13	636	526	0	82.70	17.30	AFRICA	G-VII
3	A21/Lumbwa/KEN/64 (AY593761)	KEN64-AA	636	525	0	82.55	17.45	AFRICA	G-III
4	A/GHA/16/73	GHA73-16	633	522	0	82.46	17.54	AFRICA	G-VI
5	A/NGR/2/73	NGR73-02	636	521	0	81.92	18.08	AFRICA	G-V
6	A12/UK/119/32 (M10975)	UKG32119	636	518	0	81.45	18.55	EURO-SA	A ₁₂
7	A/EGY/1/72 (EF208756)	EGY72-01	636	513	0	80.66	19.34	AFRICA	G-II
8	A/SUD/3/77 (GU566064)	SUD77-03	636	512	0	80.50	19.50	AFRICA	G-IV
9	A15/Bangkok/TAI/60 (AY593755)	TAI60-D	636	509	0	80.03	19.97	ASIA	A15
10	A22/IRQ/64 (AY593763)	IRQ64-A	636	507	0	79.72	20.28	ASIA	A ₂₂

nt, nucleotides

*, not a WRLFMD reference number

Assembled with Report Generator v4.1

© The Pirbright Institute (not to be reproduced without permission)

FAO World Reference Laboratory for FMD Genotyping Report

IAH-P-EP-MEG-FOR-005-3

Page 1 of 1

Serotype: A	Report date: 24/04/2013
WRLFMD Ref No: TAN/68/2012	Reported by: N.J. Knowles
Batch No: WRLFMD/2013/00005	Checked by: D.P. King
Sender Ref: 8426	
Location: Serengeti, Tanzania	Topotype: AFRICA
Date collected: 15/09/2012	Genotype/strain: G-I
Date received by WRLFMD: 13/03/2013	Sequence filename: TAN12-68.SEQ
Date received for sequencing: 16/04/2013	Date sequence last updated: 24/04/2013
Species: Cattle	No. of Nt determined: 636
Material used: BTy1 26/03/2013	No. of ambiguities: 0
Region sequenced: VP1	Gene length: 636
RT-PCR primers: A-1C612F/EUR-2B52R	Total no. of comparisons: 1598
	Min. no. of nt for comparison: 600
	Total turn-around time: 42 days
	Sequencing time: 8 days
Comments:	

Most Closely Related Viruses									
Pos.	Virus name	Filename	No. nt comp.	No. nt match.	No. of ambig.	% Id.	% Diff.	Topotype	Strain
1	A/TAN/67/2012	TAN12-67	636	636	0	100.00	0.00	AFRICA	G-I
2	A/TAN/70/2012	TAN12-70	636	635	0	99.84	0.16	AFRICA	G-I
3	A/TAN/71/2012	TAN12-71	636	635	0	99.84	0.16	AFRICA	G-I
4	A/TAN/69/2012	TAN12-69	636	633	0	99.53	0.47	AFRICA	G-I
5	A/TAN/72/2012	TAN12-72	636	633	0	99.53	0.47	AFRICA	G-I
6	A/TAN/73/2012	TAN12-73	636	632	0	99.37	0.63	AFRICA	G-I
7	A/TAN/1/2013	TAN13-01	636	625	0	98.27	1.73	AFRICA	G-I
8	A/TAN/56/2012	TAN12-56	636	625	0	98.27	1.73	AFRICA	G-I
9	A/TAN/60/2012	TAN12-60	636	625	0	98.27	1.73	AFRICA	G-I
10	A/TAN/61/2012	TAN12-61	636	625	0	98.27	1.73	AFRICA	G-I
Most Closely Related Reference Viruses									
(see http://www.wrlfind.org/find_genotyping/prototypes.htm)									
Pos.	Virus name	Filename	No. nt comp.	No. nt match.	No. of ambig.	% Id.	% Diff.	Topotype	Strain
1	A/KEN/42/66 (K18/66)	KEN66-42	636	538	0	84.59	15.41	AFRICA	G-I
2	A/UGA/13/66	UGA66-13	636	526	0	82.70	17.30	AFRICA	G-VII
3	A21/Lumbwa/KEN/64 (AY593761)	KEN64-AA	636	525	0	82.55	17.45	AFRICA	G-III
4	A/GHA/16/73	GHA73-16	633	522	0	82.46	17.54	AFRICA	G-VI
5	A/NGR/2/73	NGR73-02	636	521	0	81.92	18.08	AFRICA	G-V
6	A12/UK/119/32 (M10975)	UKG32119	636	518	0	81.45	18.55	EURO-SA	A12
7	A/EGY/1/72 (EF208756)	EGY72-01	636	513	0	80.66	19.34	AFRICA	G-II
8	A/SUD/3/77 (GU566064)	SUD77-03	636	512	0	80.50	19.50	AFRICA	G-IV
9	A15/Bangkok/TAI/60 (AY593755)	TAI60--D	636	509	0	80.03	19.97	ASIA	A15
10	A22/IRQ/64 (AY593763)	IRQ64--A	636	507	0	79.72	20.28	ASIA	A22

nt, nucleotides

*, not a WRLFMD reference number

Assembled with Report Generator v4.1

© The Pirbright Institute (not to be reproduced without permission)

FAO World Reference Laboratory for FMD Genotyping Report

IAH-P-EP-MEG-FOR-005-3

Page 1 of 1

Serotype: A	Report date: 24/04/2013
WRLFMD Ref No: TAN/69/2012	Reported by: N.J. Knowles
Batch No: WRLFMD/2013/00005	Checked by: D.P. King
Sender Ref: 8492	
Location: Serengeti, Tanzania	Topotype: AFRICA
Date collected: 03/10/2012	Genotype/strain: G-I
Date received by WRLFMD: 13/03/2013	Sequence filename: TAN12-69.SEQ
Date received for sequencing: 16/04/2013	Date sequence last updated: 24/04/2013
Species: Cattle	No. of Nt determined: 636
Material used: BTy1 26/03/2013	No. of ambiguities: 0
Region sequenced: VP1	Gene length: 636
RT-PCR primers: A-1C612F/EUR-2B52R	Total no. of comparisons: 1598
	Min. no. of nt for comparison: 600
	Total turn-around time: 42 days
	Sequencing time: 8 days
Comments:	

Most Closely Related Viruses									
Pos.	Virus name	Filename	No. nt comp.	No. nt match.	No. of ambig.	% Id.	% Diff.	Topotype	Strain
1	A/TAN/72/2012	TAN12-72	636	636	0	100.00	0.00	AFRICA	G-I
2	A/TAN/73/2012	TAN12-73	636	635	0	99.84	0.16	AFRICA	G-I
3	A/TAN/70/2012	TAN12-70	636	634	0	99.69	0.31	AFRICA	G-I
4	A/TAN/71/2012	TAN12-71	636	634	0	99.69	0.31	AFRICA	G-I
5	A/TAN/67/2012	TAN12-67	636	633	0	99.53	0.47	AFRICA	G-I
6	A/TAN/68/2012	TAN12-68	636	633	0	99.53	0.47	AFRICA	G-I
7	A/TAN/1/2013	TAN13-01	636	624	0	98.11	1.89	AFRICA	G-I
8	A/TAN/56/2012	TAN12-56	636	624	0	98.11	1.89	AFRICA	G-I
9	A/TAN/60/2012	TAN12-60	636	624	0	98.11	1.89	AFRICA	G-I
10	A/TAN/61/2012	TAN12-61	636	624	0	98.11	1.89	AFRICA	G-I
Most Closely Related Reference Viruses									
(see http://www.wrlfmd.org/find_genotyping/prototypes.htm)									
Pos.	Virus name	Filename	No. nt comp.	No. nt match.	No. of ambig.	% Id.	% Diff.	Topotype	Strain
1	A/KEN/42/66 (K18/66)	KEN66-42	636	538	0	84.59	15.41	AFRICA	G-I
2	A/UGA/13/66	UGA66-13	636	526	0	82.70	17.30	AFRICA	G-VII
3	A21/Lumbwa/KEN/64 (AY593761)	KEN64-AA	636	525	0	82.55	17.45	AFRICA	G-III
4	A/GHA/16/73	GHA73-16	633	520	0	82.15	17.85	AFRICA	G-VI
5	A/NGR/2/73	NGR73-02	636	521	0	81.92	18.08	AFRICA	G-V
6	A12/UK/119/32 (M10975)	UKG32119	636	518	0	81.45	18.55	EURO-SA	A ₁₂
7	A/EGY/1/72 (EF208756)	EGY72-01	636	513	0	80.66	19.34	AFRICA	G-II
8	A/SUD/3/77 (GU566064)	SUD77-03	636	511	0	80.35	19.65	AFRICA	G-IV
9	A15/Bangkok/TAI/60 (AY593755)	TAI60-D	636	511	0	80.35	19.65	ASIA	A15
10	A22/IRQ/64 (AY593763)	IRQ64-A	636	507	0	79.72	20.28	ASIA	A ₂₂

nt, nucleotides

*, not a WRLFMD reference number

Assembled with Report Generator v4.1

© The Pirbright Institute (not to be reproduced without permission)

FAO World Reference Laboratory for FMD Genotyping Report

IAH-P-EP-MEG-FOR-005-3

Page 1 of 1

Serotype: A	Report date: 24/04/2013
WRLFMD Ref No: TAN/70/2012	Reported by: N.J. Knowles
Batch No: WRLFMD/2013/00005	Checked by: D.P. King
Sender Ref: 8493	
Location: Serengeti, Tanzania	Topotype: AFRICA
Date collected: 03/10/2012	Genotype/strain: G-I
Date received by WRLFMD: 13/03/2013	Sequence filename: TAN12-70.SEQ
Date received for sequencing: 16/04/2013	Date sequence last updated: 24/04/2013
Species: Cattle	No. of Nt determined: 636
Material used: BTy1 26/03/2013	No. of ambiguities: 0
Region sequenced: VP1	Gene length: 636
RT-PCR primers: A-1C562F/EUR-2B52R	Total no. of comparisons: 1598
A-1C612F/EUR-2B52R	Min. no. of nt for comparison: 600
	Total turn-around time: 42 days
	Sequencing time: 8 days
Comments:	

Most Closely Related Viruses									
Pos.	Virus name	Filename	No. nt comp.	No. nt match.	No. of ambig.	% Id.	% Diff.	Topotype	Strain
1	A/TAN/71/2012	TAN12-71	636	636	0	100.00	0.00	AFRICA	G-I
2	A/TAN/67/2012	TAN12-67	636	635	0	99.84	0.16	AFRICA	G-I
3	A/TAN/68/2012	TAN12-68	636	635	0	99.84	0.16	AFRICA	G-I
4	A/TAN/69/2012	TAN12-69	636	634	0	99.69	0.31	AFRICA	G-I
5	A/TAN/72/2012	TAN12-72	636	634	0	99.69	0.31	AFRICA	G-I
6	A/TAN/73/2012	TAN12-73	636	633	0	99.53	0.47	AFRICA	G-I
7	A/TAN/1/2013	TAN13-01	636	626	0	98.43	1.57	AFRICA	G-I
8	A/TAN/56/2012	TAN12-56	636	626	0	98.43	1.57	AFRICA	G-I
9	A/TAN/60/2012	TAN12-60	636	626	0	98.43	1.57	AFRICA	G-I
10	A/TAN/61/2012	TAN12-61	636	626	0	98.43	1.57	AFRICA	G-I
Most Closely Related Reference Viruses									
(see http://www.wrlfmd.org/fmd_genotyping/prototypes.htm)									
Pos.	Virus name	Filename	No. nt comp.	No. nt match.	No. of ambig.	% Id.	% Diff.	Topotype	Strain
1	A/KEN/42/66 (K18/66)	KEN66-42	636	539	0	84.75	15.25	AFRICA	G-I
2	A/UGA/13/66	UGA66-13	636	527	0	82.86	17.14	AFRICA	G-VII
3	A21/Lumbwa/KEN/64 (AY593761)	KEN64-AA	636	526	0	82.70	17.30	AFRICA	G-III
4	A/GHA/16/73	GHA73-16	633	521	0	82.31	17.69	AFRICA	G-VI
5	A/NGR/2/73	NGR73-02	636	522	0	82.08	17.92	AFRICA	G-V
6	A12/UK/119/32 (M10975)	UKG32119	636	519	0	81.60	18.40	EURO-SA	A ₁₂
7	A/EGY/1/72 (EF208756)	EGY72-01	636	514	0	80.82	19.18	AFRICA	G-II
8	A/SUD/3/77 (GU566064)	SUD77-03	636	513	0	80.66	19.34	AFRICA	G-IV
9	A15/Bangkok/TAI/60 (AY593755)	TAI60--D	636	510	0	80.19	19.81	ASIA	A15
10	A22/IRQ/64 (AY593763)	IRQ64--A	636	508	0	79.87	20.13	ASIA	A ₂₂

nt, nucleotides

*, not a WRLFMD reference number

Assembled with Report Generator v4.1

© The Pirbright Institute (not to be reproduced without permission)

FAO World Reference Laboratory for FMD Genotyping Report

IAH-P-EP-MEG-FOR-005-3

Page 1 of 1

Serotype: A	Report date: 24/04/2013
WRLFMD Ref No: TAN/71/2012	Reported by: N.J. Knowles
Batch No: WRLFMD/2013/00005	Checked by: D.P. King
Sender Ref: 6740	
Location: Serengeti, Tanzania	Topotype: AFRICA
Date collected: 05/10/2012	Genotype/strain: G-I
Date received by WRLFMD: 13/03/2013	Sequence filename: TAN12-71.SEQ
Date received for sequencing: 16/04/2013	Date sequence last updated: 24/04/2013
Species: Cattle	No. of Nt determined: 636
Material used: BTy1 26/03/2013	No. of ambiguities: 0
Region sequenced: VP1	Gene length: 636
RT-PCR primers: A-1C562F/EUR-2B52R	Total no. of comparisons: 1598
A-1C612F/EUR-2B52R	Min. no. of nt for comparison: 600
	Total turn-around time: 42 days
	Sequencing time: 8 days
Comments:	

Most Closely Related Viruses									
Pos.	Virus name	Filename	No. nt comp.	No. nt match.	No. of ambig.	% Id.	% Diff.	Topotype	Strain
1	A/TAN/70/2012	TAN12-70	636	636	0	100.00	0.00	AFRICA	G-I
2	A/TAN/67/2012	TAN12-67	636	635	0	99.84	0.16	AFRICA	G-I
3	A/TAN/68/2012	TAN12-68	636	635	0	99.84	0.16	AFRICA	G-I
4	A/TAN/69/2012	TAN12-69	636	634	0	99.69	0.31	AFRICA	G-I
5	A/TAN/72/2012	TAN12-72	636	634	0	99.69	0.31	AFRICA	G-I
6	A/TAN/73/2012	TAN12-73	636	633	0	99.53	0.47	AFRICA	G-I
7	A/TAN/1/2013	TAN13-01	636	626	0	98.43	1.57	AFRICA	G-I
8	A/TAN/56/2012	TAN12-56	636	626	0	98.43	1.57	AFRICA	G-I
9	A/TAN/60/2012	TAN12-60	636	626	0	98.43	1.57	AFRICA	G-I
10	A/TAN/61/2012	TAN12-61	636	626	0	98.43	1.57	AFRICA	G-I
Most Closely Related Reference Viruses									
(see http://www.wrlfmd.org/find_genotyping/prototypes.htm)									
Pos.	Virus name	Filename	No. nt comp.	No. nt match.	No. of ambig.	% Id.	% Diff.	Topotype	Strain
1	A/KEN/42/66 (K18/66)	KEN66-42	636	539	0	84.75	15.25	AFRICA	G-I
2	A/UGA/13/66	UGA66-13	636	527	0	82.86	17.14	AFRICA	G-VII
3	A21/Lumbwa/KEN/64 (AY593761)	KEN64-AA	636	526	0	82.70	17.30	AFRICA	G-III
4	A/GHA/16/73	GHA73-16	633	521	0	82.31	17.69	AFRICA	G-VI
5	A/NGR/2/73	NGR73-02	636	522	0	82.08	17.92	AFRICA	G-V
6	A12/UK/119/32 (M10975)	UKG32119	636	519	0	81.60	18.40	EURO-SA	A ₁₂
7	A/EGY/1/72 (EF208756)	EGY72-01	636	514	0	80.82	19.18	AFRICA	G-II
8	A/SUD/3/77 (GU566064)	SUD77-03	636	513	0	80.66	19.34	AFRICA	G-IV
9	A15/Bangkok/TAI/60 (AY593755)	TAI60--D	636	510	0	80.19	19.81	ASIA	A15
10	A22/IRQ/64 (AY593763)	IRQ64--A	636	508	0	79.87	20.13	ASIA	A ₂₂

nt, nucleotides

*, not a WRLFMD reference number

Assembled with Report Generator v4.1

© The Pirbright Institute (not to be reproduced without permission)

FAO World Reference Laboratory for FMD Genotyping Report

IAH-P-EP-MEG-FOR-005-3

Page 1 of 1

Serotype: A	Report date: 24/04/2013
WRLFMD Ref No: TAN/72/2012	Reported by: N.J. Knowles
Batch No: WRLFMD/2013/00005	Checked by: D.P. King
Sender Ref: 6737	
Location: Serengeti, Tanzania	Topotype: AFRICA
Date collected: 05/10/2012	Genotype/strain: G-I
Date received by WRLFMD: 13/03/2013	Sequence filename: TAN12-72.SEQ
Date received for sequencing: 16/04/2013	Date sequence last updated: 24/04/2013
Species: Cattle	No. of Nt determined: 636
Material used: BTy1 26/03/2013	No. of ambiguities: 0
Region sequenced: VP1	Gene length: 636
RT-PCR primers: A-1C562F/EUR-2B52R	Total no. of comparisons: 1598
A-1C612F/EUR-2B52R	Min. no. of nt for comparison: 600
	Total turn-around time: 42 days
	Sequencing time: 8 days
Comments:	

Most Closely Related Viruses									
Pos.	Virus name	Filename	No. nt comp.	No. nt match.	No. of ambig.	% Id.	% Diff.	Topotype	Strain
1	A/TAN/69/2012	TAN12-69	636	636	0	100.00	0.00	AFRICA	G-I
2	A/TAN/73/2012	TAN12-73	636	635	0	99.84	0.16	AFRICA	G-I
3	A/TAN/70/2012	TAN12-70	636	634	0	99.69	0.31	AFRICA	G-I
4	A/TAN/71/2012	TAN12-71	636	634	0	99.69	0.31	AFRICA	G-I
5	A/TAN/67/2012	TAN12-67	636	633	0	99.53	0.47	AFRICA	G-I
6	A/TAN/68/2012	TAN12-68	636	633	0	99.53	0.47	AFRICA	G-I
7	A/TAN/1/2013	TAN13-01	636	624	0	98.11	1.89	AFRICA	G-I
8	A/TAN/56/2012	TAN12-56	636	624	0	98.11	1.89	AFRICA	G-I
9	A/TAN/60/2012	TAN12-60	636	624	0	98.11	1.89	AFRICA	G-I
10	A/TAN/61/2012	TAN12-61	636	624	0	98.11	1.89	AFRICA	G-I
Most Closely Related Reference Viruses									
(see http://www.wrlfmd.org/fmd_genotyping/prototypes.htm)									
Pos.	Virus name	Filename	No. nt comp.	No. nt match.	No. of ambig.	% Id.	% Diff.	Topotype	Strain
1	A/KEN/42/66 (K18/66)	KEN66-42	636	538	0	84.59	15.41	AFRICA	G-I
2	A/UGA/13/66	UGA66-13	636	526	0	82.70	17.30	AFRICA	G-VII
3	A21/Lumbwa/KEN/64 (AY593761)	KEN64-AA	636	525	0	82.55	17.45	AFRICA	G-III
4	A/GHA/16/73	GHA73-16	633	520	0	82.15	17.85	AFRICA	G-VI
5	A/NGR/2/73	NGR73-02	636	521	0	81.92	18.08	AFRICA	G-V
6	A12/UK/119/32 (M10975)	UKG32119	636	518	0	81.45	18.55	EURO-SA	A ₁₂
7	A/EGY/1/72 (EF208756)	EGY72-01	636	513	0	80.66	19.34	AFRICA	G-II
8	A/SUD/3/77 (GU566064)	SUD77-03	636	511	0	80.35	19.65	AFRICA	G-IV
9	A15/Bangkok/TAI/60 (AY593755)	TAI60--D	636	511	0	80.35	19.65	ASIA	A15
10	A22/IRQ/64 (AY593763)	IRQ64--A	636	507	0	79.72	20.28	ASIA	A ₂₂

nt, nucleotides

*, not a WRLFMD reference number

Assembled with Report Generator v4.1

© The Pirbright Institute (not to be reproduced without permission)

FAO World Reference Laboratory for FMD Genotyping Report

IAH-P-EP-MEG-FOR-005-3

Page 1 of 1

Serotype: A	Report date: 24/04/2013
WRLFMD Ref No: TAN/73/2012	Reported by: N.J. Knowles
Batch No: WRLFMD/2013/00005	Checked by: D.P. King
Sender Ref: 6772	
Location: Serengeti, Tanzania	Topotype: AFRICA
Date collected: 16/10/2012	Genotype/strain: G-I
Date received by WRLFMD: 13/03/2013	Sequence filename: TAN12-73.SEQ
Date received for sequencing: 16/04/2013	Date sequence last updated: 24/04/2013
Species: Cattle	No. of Nt determined: 636
Material used: BTy1 05/04/2013	No. of ambiguities: 0
Region sequenced: VP1	Gene length: 636
RT-PCR primers: A-1C562F/EUR-2B52R	Total no. of comparisons: 1598
A-1C612F/EUR-2B52R	Min. no. of nt for comparison: 600
	Total turn-around time: 42 days
	Sequencing time: 8 days
Comments:	

Most Closely Related Viruses									
Pos.	Virus name	Filename	No. nt comp.	No. nt match.	No. of ambig.	% Id.	% Diff.	Topotype	Strain
1	A/TAN/69/2012	TAN12-69	636	635	0	99.84	0.16	AFRICA	G-I
2	A/TAN/72/2012	TAN12-72	636	635	0	99.84	0.16	AFRICA	G-I
3	A/TAN/70/2012	TAN12-70	636	633	0	99.53	0.47	AFRICA	G-I
4	A/TAN/71/2012	TAN12-71	636	633	0	99.53	0.47	AFRICA	G-I
5	A/TAN/67/2012	TAN12-67	636	632	0	99.37	0.63	AFRICA	G-I
6	A/TAN/68/2012	TAN12-68	636	632	0	99.37	0.63	AFRICA	G-I
7	A/TAN/1/2013	TAN13-01	636	623	0	97.96	2.04	AFRICA	G-I
8	A/TAN/56/2012	TAN12-56	636	623	0	97.96	2.04	AFRICA	G-I
9	A/TAN/60/2012	TAN12-60	636	623	0	97.96	2.04	AFRICA	G-I
10	A/TAN/61/2012	TAN12-61	636	623	0	97.96	2.04	AFRICA	G-I
Most Closely Related Reference Viruses									
(see http://www.wrlfmd.org/fmd_genotyping/prototypes.htm)									
Pos.	Virus name	Filename	No. nt comp.	No. nt match.	No. of ambig.	% Id.	% Diff.	Topotype	Strain
1	A/KEN/42/66 (K18/66)	KEN66-42	636	539	0	84.75	15.25	AFRICA	G-I
2	A/UGA/13/66	UGA66-13	636	525	0	82.55	17.45	AFRICA	G-VII
3	A21/Lumbwa/KEN/64 (AY593761)	KEN64-AA	636	524	0	82.39	17.61	AFRICA	G-III
4	A/GHA/16/73	GHA73-16	633	519	0	81.99	18.01	AFRICA	G-VI
5	A/NGR/2/73	NGR73-02	636	520	0	81.76	18.24	AFRICA	G-V
6	A12/UK/119/32 (M10975)	UKG32119	636	517	0	81.29	18.71	EURO-SA	A ₁₂
7	A/EGY/1/72 (EF208756)	EGY72-01	636	512	0	80.50	19.50	AFRICA	G-II
8	A/SUD/3/77 (GU566064)	SUD77-03	636	510	0	80.19	19.81	AFRICA	G-IV
9	A15/Bangkok/TAI/60 (AY593755)	TAI60--D	636	510	0	80.19	19.81	ASIA	A15
10	A22/IRQ/64 (AY593763)	IRQ64--A	636	506	0	79.56	20.44	ASIA	A ₂₂

nt, nucleotides

*, not a WRLFMD reference number

Assembled with Report Generator v4.1

© The Pirbright Institute (not to be reproduced without permission)

FAO World Reference Laboratory for FMD Genotyping Report

IAH-P-EP-MEG-FOR-005-3

Page 1 of 1

Serotype: A	Report date: 24/04/2013
WRLFMD Ref No: TAN/1/2013	Reported by: N.J. Knowles
Batch No: WRLFMD/2013/00005	Checked by: D.P. King
Sender Ref: 7932	
Location: Serengeti, Tanzania	Topotype: AFRICA
Date collected: 18/01/2013	Genotype/strain: G-I
Date received by WRLFMD: 13/03/2013	Sequence filename: TAN13-01.SEQ
Date received for sequencing: 16/04/2013	Date sequence last updated: 24/04/2013
Species: Cattle	No. of Nt determined: 639
Material used: BTy1 05/04/2013	No. of ambiguities: 0
Region sequenced: VP1	Gene length: 639
RT-PCR primers: A-1C562F/EUR-2B52R	Total no. of comparisons: 1602
A-1C612F/EUR-2B52R	Min. no. of nt for comparison: 600
	Total turn-around time: 42 days
	Sequencing time: 8 days
Comments:	

Most Closely Related Viruses									
Pos.	Virus name	Filename	No. nt comp.	No. nt match.	No. of ambig.	% Id.	% Diff.	Topotype	Strain
1	A/TAN/56/2012	TAN12-56	639	639	0	100.00	0.00	AFRICA	G-I
2	A/TAN/61/2012	TAN12-61	639	639	0	100.00	0.00	AFRICA	G-I
3	A/TAN/65/2012	TAN12-65	639	639	0	100.00	0.00	AFRICA	G-I
4	A/TAN/66/2012	TAN12-66	639	639	0	100.00	0.00	AFRICA	G-I
5	A/TAN/2/2013	TAN13-02	639	638	0	99.84	0.16	AFRICA	G-I
6	A/TAN/3/2013	TAN13-03	639	637	0	99.69	0.31	AFRICA	G-I
7	A/TAN/60/2012	TAN12-60	639	637	0	99.69	0.31	AFRICA	G-I
8	A/TAN/70/2012	TAN12-70	636	626	0	98.43	1.57	AFRICA	G-I
9	A/TAN/71/2012	TAN12-71	636	626	0	98.43	1.57	AFRICA	G-I
10	A/TAN/67/2012	TAN12-67	636	625	0	98.27	1.73	AFRICA	G-I
Most Closely Related Reference Viruses									
(see http://www.wrlfmd.org/fmd_genotyping/prototypes.htm)									
Pos.	Virus name	Filename	No. nt comp.	No. nt match.	No. of ambig.	% Id.	% Diff.	Topotype	Strain
1	A/KEN/42/66 (K18/66)	KEN66-42	639	542	0	84.82	15.18	AFRICA	G-I
2	A/UGA/13/66	UGA66-13	639	529	0	82.79	17.21	AFRICA	G-VII
3	A21/Lumbwa/KEN/64 (AY593761)	KEN64-AA	639	529	0	82.79	17.21	AFRICA	G-III
4	A/GHA/16/73	GHA73-16	636	525	0	82.55	17.45	AFRICA	G-VI
5	A/NGR/2/73	NGR73-02	639	524	0	82.00	18.00	AFRICA	G-V
6	A12/UK/119/32 (M10975)	UKG32119	639	517	0	80.91	19.09	EURO-SA	A ₁₂
7	A/EGY/1/72 (EF208756)	EGY72-01	639	515	0	80.59	19.41	AFRICA	G-II
8	A/SUD/3/77 (GU566064)	SUD77-03	639	515	0	80.59	19.41	AFRICA	G-IV
9	A/IRN/15/2012	IRN12-15	639	509	0	79.66	20.34	ASIA	Iran-05 ^{SIS-12}
10	A15/Bangkok/TAI/60 (AY593755)	TAI60--D	639	507	0	79.34	20.66	ASIA	A15

nt, nucleotides

*, not a WRLFMD reference number

Assembled with Report Generator v4.1

© The Pirbright Institute (not to be reproduced without permission)

FAO World Reference Laboratory for FMD Genotyping Report

IAH-P-EP-MEG-FOR-005-3

Page 1 of 1

Serotype: A	Report date: 24/04/2013
WRLFMD Ref No: TAN/2/2013	Reported by: N.J. Knowles
Batch No: WRLFMD/2013/00005	Checked by: D.P. King
Sender Ref: 7931	
Location: Serengeti, Tanzania	Topotype: AFRICA
Date collected: 18/01/2013	Genotype/strain: G-I
Date received by WRLFMD: 13/03/2013	Sequence filename: TAN13-02.SEQ
Date received for sequencing: 16/04/2013	Date sequence last updated: 24/04/2013
Species: Cattle	No. of Nt determined: 639
Material used: BTy2 09/04/2013	No. of ambiguities: 0
Region sequenced: VP1	Gene length: 639
RT-PCR primers: A-1C562F/EUR-2B52R	Total no. of comparisons: 1602
A-1C612F/EUR-2B52R	Min. no. of nt for comparison: 600
	Total turn-around time: 42 days
	Sequencing time: 8 days
Comments:	

Most Closely Related Viruses									
Pos.	Virus name	Filename	No. nt comp.	No. nt match.	No. of ambig.	% Id.	% Diff.	Topotype	Strain
1	A/TAN/1/2013	TAN13-01	639	638	0	99.84	0.16	AFRICA	G-I
2	A/TAN/3/2013	TAN13-03	639	638	0	99.84	0.16	AFRICA	G-I
3	A/TAN/56/2012	TAN12-56	639	638	0	99.84	0.16	AFRICA	G-I
4	A/TAN/61/2012	TAN12-61	639	638	0	99.84	0.16	AFRICA	G-I
5	A/TAN/65/2012	TAN12-65	639	638	0	99.84	0.16	AFRICA	G-I
6	A/TAN/66/2012	TAN12-66	639	638	0	99.84	0.16	AFRICA	G-I
7	A/TAN/60/2012	TAN12-60	639	636	0	99.53	0.47	AFRICA	G-I
8	A/TAN/70/2012	TAN12-70	636	625	0	98.27	1.73	AFRICA	G-I
9	A/TAN/71/2012	TAN12-71	636	625	0	98.27	1.73	AFRICA	G-I
10	A/TAN/67/2012	TAN12-67	636	624	0	98.11	1.89	AFRICA	G-I
Most Closely Related Reference Viruses									
(see http://www.wrlfmd.org/fmd_genotyping/prototypes.htm)									
Pos.	Virus name	Filename	No. nt comp.	No. nt match.	No. of ambig.	% Id.	% Diff.	Topotype	Strain
1	A/KEN/42/66 (K18/66)	KEN66-42	639	541	0	84.66	15.34	AFRICA	G-I
2	A/UGA/13/66	UGA66-13	639	528	0	82.63	17.37	AFRICA	G-VII
3	A21/Lumbwa/KEN/64 (AY593761)	KEN64-AA	639	528	0	82.63	17.37	AFRICA	G-III
4	A/GHA/16/73	GHA73-16	636	524	0	82.39	17.61	AFRICA	G-VI
5	A/NGR/2/73	NGR73-02	639	523	0	81.85	18.15	AFRICA	G-V
6	A12/UK/119/32 (M10975)	UKG32119	639	516	0	80.75	19.25	EURO-SA	A ₁₂
7	A/EGY/1/72 (EF208756)	EGY72-01	639	514	0	80.44	19.56	AFRICA	G-II
8	A/SUD/3/77 (GU566064)	SUD77-03	639	514	0	80.44	19.56	AFRICA	G-IV
9	A/IRN/15/2012	IRN12-15	639	510	0	79.81	20.19	ASIA	Iran-05 ^{SIS-12}
10	A15/Bangkok/TAI/60 (AY593755)	TAI60--D	639	506	0	79.19	20.81	ASIA	A15

nt, nucleotides

*, not a WRLFMD reference number

Assembled with Report Generator v4.1

© The Pirbright Institute (not to be reproduced without permission)

FAO World Reference Laboratory for FMD Genotyping Report

IAH-P-EP-MEG-FOR-005-3

Page 1 of 1

Serotype: A	Report date: 24/04/2013
WRLFMD Ref No: TAN/3/2013	Reported by: N.J. Knowles
Batch No: WRLFMD/2013/00005	Checked by: D.P. King
Sender Ref: 7887	
Location: Serengeti, Tanzania	Topotype: AFRICA
Date collected: 11/02/2013	Genotype/strain: G-I
Date received by WRLFMD: 13/03/2013	Sequence filename: TAN13-03.SEQ
Date received for sequencing: 16/04/2013	Date sequence last updated: 24/04/2013
Species: Cattle	No. of Nt determined: 639
Material used: BTy1 05/04/2013	No. of ambiguities: 0
Region sequenced: VPI	Gene length: 639
RT-PCR primers: A-1C562F/EUR-2B52R	Total no. of comparisons: 1602
A-1C612F/EUR-2B52R	Min. no. of nt for comparison: 600
	Total turn-around time: 42 days
	Sequencing time: 8 days
Comments:	

Most Closely Related Viruses									
Pos.	Virus name	Filename	No. nt comp.	No. nt match.	No. of ambig.	% Id.	% Diff.	Topotype	Strain
1	A/TAN/2/2013	TAN13-02	639	638	0	99.84	0.16	AFRICA	G-I
2	A/TAN/1/2013	TAN13-01	639	637	0	99.69	0.31	AFRICA	G-I
3	A/TAN/56/2012	TAN12-56	639	637	0	99.69	0.31	AFRICA	G-I
4	A/TAN/61/2012	TAN12-61	639	637	0	99.69	0.31	AFRICA	G-I
5	A/TAN/65/2012	TAN12-65	639	637	0	99.69	0.31	AFRICA	G-I
6	A/TAN/66/2012	TAN12-66	639	637	0	99.69	0.31	AFRICA	G-I
7	A/TAN/60/2012	TAN12-60	639	635	0	99.37	0.63	AFRICA	G-I
8	A/TAN/70/2012	TAN12-70	636	624	0	98.11	1.89	AFRICA	G-I
9	A/TAN/71/2012	TAN12-71	636	624	0	98.11	1.89	AFRICA	G-I
10	A/TAN/67/2012	TAN12-67	636	623	0	97.96	2.04	AFRICA	G-I
Most Closely Related Reference Viruses									
(see http://www.wrlfind.org/find_genotyping/prototypes.htm)									
Pos.	Virus name	Filename	No. nt comp.	No. nt match.	No. of ambig.	% Id.	% Diff.	Topotype	Strain
1	A/KEN/42/66 (K18/66)	KEN66-42	639	542	0	84.82	15.18	AFRICA	G-I
2	A/UGA/13/66	UGA66-13	639	529	0	82.79	17.21	AFRICA	G-VII
3	A21/Lumbwa/KEN/64 (AY593761)	KEN64-AA	639	529	0	82.79	17.21	AFRICA	G-III
4	A/GHA/16/73	GHA73-16	636	525	0	82.55	17.45	AFRICA	G-VI
5	A/NGR/2/73	NGR73-02	639	522	0	81.69	18.31	AFRICA	G-V
6	A12/UK/119/32 (M10975)	UKG32119	639	516	0	80.75	19.25	EURO-SA	A ₁₂
7	A/SUD/3/77 (GU566064)	SUD77-03	639	515	0	80.59	19.41	AFRICA	G-IV
8	A/EGY/1/72 (EF208756)	EGY72-01	639	513	0	80.28	19.72	AFRICA	G-II
9	A/IRN/15/2012	IRN12-15	639	510	0	79.81	20.19	ASIA	Iran-05 ^{SIS-12}
10	A15/Bangkok/TAI/60 (AY593755)	TAI60--D	639	506	0	79.19	20.81	ASIA	A15

nt, nucleotides

*, not a WRLFMD reference number

Assembled with Report Generator v4.1

© The Pirbright Institute (not to be reproduced without permission)

Report on FMDV A in Tanzania in 2012

Batch: WRLFMD/2013/00005

◆ indicates viruses in this batch

Software: MEGA 5.1

Analysis

Analysis ----- Phylogeny Reconstruction

Scope ----- All Selected Taxa

Statistical Method ----- Neighbor-joining

Phylogeny Test

Test of Phylogeny ----- Bootstrap method

No. of Bootstrap Replications ----- 1000

Substitution Model

Substitutions Type ----- Nucleotide

Model/Method ----- Kimura 2-parameter model

Substitutions to Include ----- d: Transitions + Transversions

Rates and Patterns

Rates among Sites ----- Uniform rates

Pattern among Lineages ----- Same (Homogeneous)

Data Subset to Use

Gaps/Missing Data Treatment ----- Pairwise deletion

Codons Included ----- 1st+2nd+3rd+Non-Coding

No. of Sites : 639

No Of Bootstrap Reps = 1000

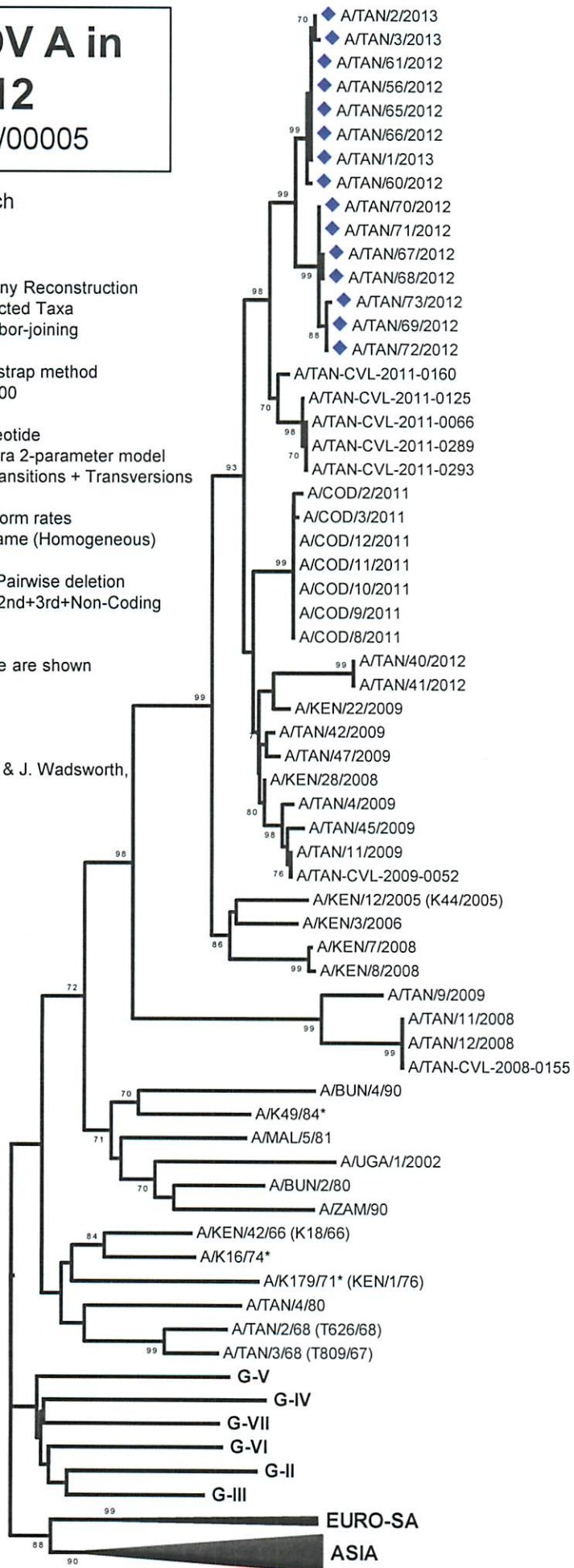
Only bootstrap values of 70% and above are shown

*, not a WRLFMD Ref. No.

N.J. Knowles, K. Bachanek-Bankowska & J. Wadsworth,
25 April 2013

© The Pirbright Institute

(not to be reproduced without permission)



G-I

AFRICA

0.02