



INSTITUTE FOR ANIMAL HEALTH  
Director: Professor Martin W. Shirley, PhD  
PIRBRIGHT LABORATORY  
Ash Road,  
Pirbright,  
Surrey,  
GU24 0NF  
Intn Tel: 00 44 1483 232441  
Tel: 01483 232441 Fax: 01483 232621

## FMD Sequencing Report

Lab Reference WRL Batch Number: WRLFMD/2009/00051

Sender Details:

Date Received: 6<sup>th</sup> November 2009

Country of Origin: Kenya

Date Reported: 27<sup>th</sup> November 2009

Dear Dr. J M Mosabi,

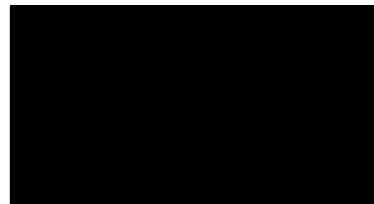
Re.: SAT 1 Results

Sequencing work has now been completed in respect of the samples you submitted and the details are as attached. Please note that all of our phylogenetic trees can be accessed via the internet at: <http://www.wrlfmd.org/>

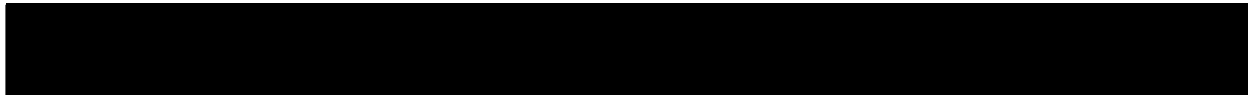
Results Approved By:



Official Stamp:



Date:



To help us improve the quality of our service, please send any suggestions or requests to the Reference Laboratory by fax (+44 (0) 1483 232621 or email: [elizabeth.byrom@bbsrc.ac.uk](mailto:elizabeth.byrom@bbsrc.ac.uk))











# Report on FMDV SAT1 in Kenya in 2009

Batch: WRLFMD/2009/00051

Software: MEGA 4.0

No. of Taxa : 143

Data File : n:\levd\meg\db\fmv\sat1\KEN2009b.meg

Data Title : SAT1 Kenya 2009

Data Type : Nucleotide (Coding)

Analysis : Phylogeny reconstruction

Tree Inference : =====

->Method : Neighbor-Joining

->Phylogeny Test and options : Bootstrap (1000 replicates; seed=64238)

Include Sites : =====

->Gaps/Missing Data : Pairwise Deletion

->Codon Positions : 1st+2nd+3rd+Noncoding

Substitution Model : =====

->Model : Nucleotide: Kimura 2-parameter

->Substitutions to Include : d: Transitions + Transversions

->Pattern among Lineages : Same (Homogeneous)

->Rates among sites : Uniform rates

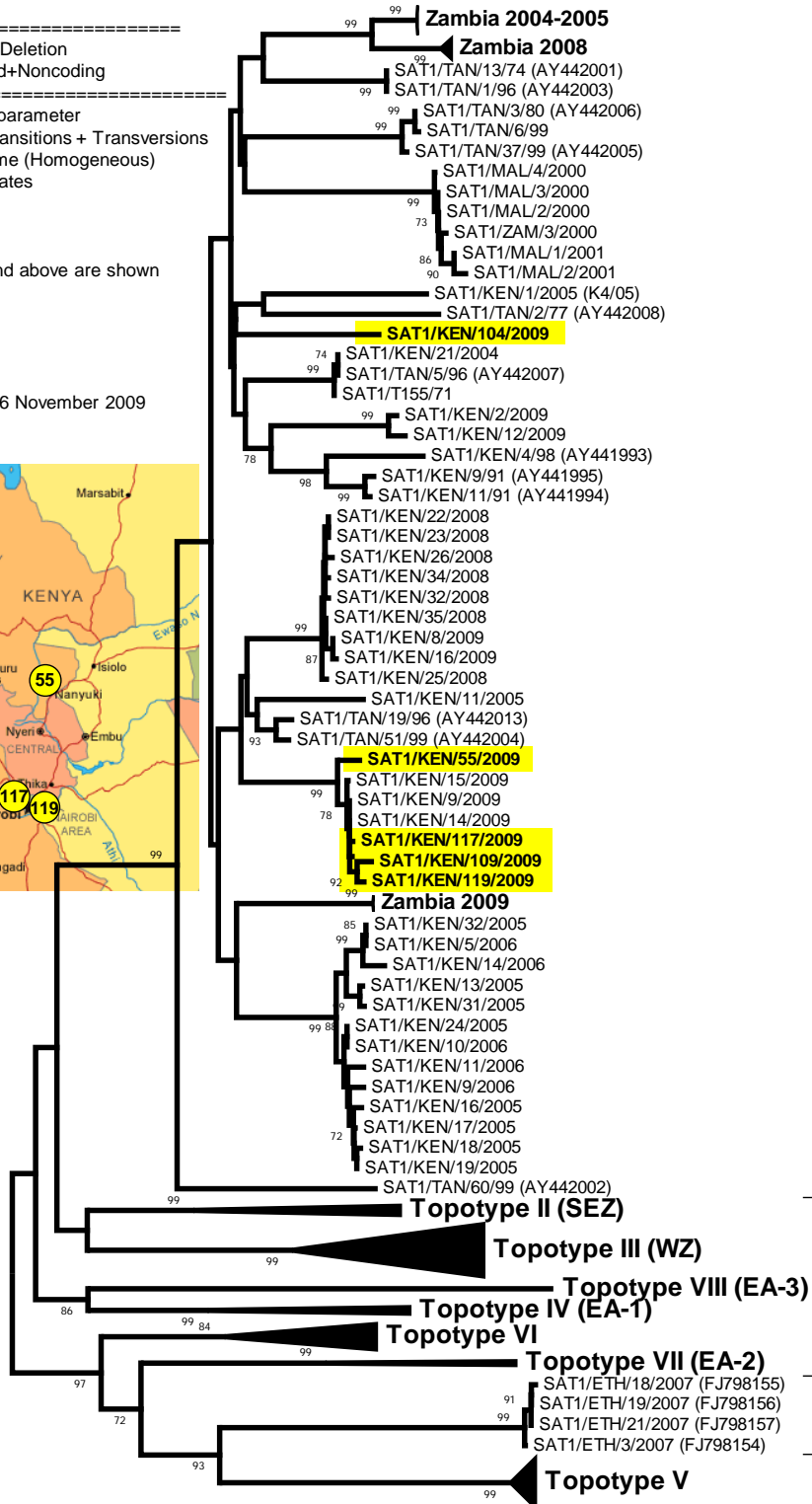
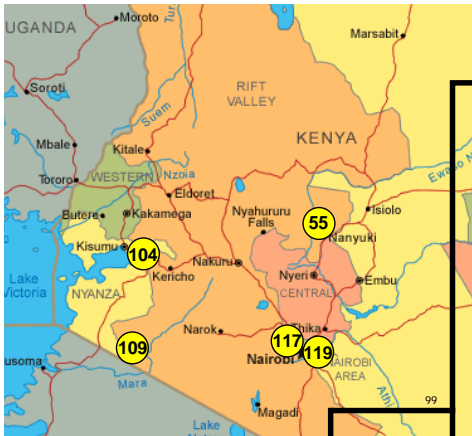
No. of Sites : 663

No Of Bootstrap Reps = 1000

Only bootstrap values of 70% and above are shown

\*, not a WRLFMD Ref. No.

N.J. Knowles & J. Wadsworth, 26 November 2009



Topotype I (NWZ)

Topotype IX