

Serotype: O	Report date: 14/02/2008
WRL Ref No: ETH/1/2007	
Sender Ref: ETH/8/07/AMA	
Date collected: 08/02/2007	
Date received by WRLFMD: 02/02/2008	Topotype: EA-3
Date received for sequencing: 07/02/2008	Genotype/strain: none designated
Species: Cattle	Sequence filename: ETH07-01.SEQ
Material used: BTy1	Date sequence last updated: 12/02/2008
Region sequenced: VP1	Total no. of comparisons: 1705
RT-PCR primers: O-1C244F/EUR2B-52R; O-1C272F/EUR2B-52R	Min. no. of nt for comparison: 300
No. of Nt determined: 639	Total turn-around time: 12 days
No. of ambiguities: 0	Sequencing time: 7 days
Gene length: 639	

Comments:

Ten Most Closely Related Viruses

Pos.	Virus name	Filename	No. nt compared	No. nt matched	No. of ambiguities	% Identity	% Difference
1	O/ETH/5/95 (OVI)	ETH95A05	495	467	0	94.34	5.66
2	O/ETH/1/2005	ETH05-01	639	600	0	93.9	6.1
3	O/ETH/38/2005 (2003/4)	ETH05-38	639	595	0	93.11	6.89
4	O/ETH/54/2006	ETH06-54	639	595	0	93.11	6.89
5	O/ETH/49/2005	ETH05-49	639	593	0	92.8	7.2
6	O/ETH/51/2005	ETH05-51	639	593	0	92.8	7.2
7	O/ETH/52/2005	ETH05-52	639	593	0	92.8	7.2
8	O/ETH/53/2005	ETH05-53	639	593	0	92.8	7.2
9	O/ETH/62/2005	ETH05-62	639	593	0	92.8	7.2
10	O/YEM/28/2004	YEM04-28	639	593	0	92.8	7.2

Relationships to Reference Virus Strains

Pos.	Virus name	Filename	No. nt compared	No. nt matched	No. of ambiguities	% Identity	% Difference
1	O/IND/53/79 [AF292107]	IND79A53	639	565	0	88.42	11.58
2	O/IND/R2/75* [AF204276]	IND75--A	639	557	0	87.17	12.83
3	O/TAW/2/99	TAW99-02	639	557	0	87.17	12.83
4	O/ISR/2/88 (DQ164899)	ISR88-02	639	548	0	85.76	14.24
5	O1/Manisa/TUR/69 (AJ251477)	TUR69--E	639	547	0	85.6	14.4
6	O/MOR/1/91	MOR91-01	639	544	0	85.13	14.87
7	O/TAI/189/87* [TRRL]	TAI87-AC	639	542	0	84.82	15.18
8	O1/BFS 1860/UK/67 (J02185)	UKG67--A	639	516	0	80.75	19.25
9	O/HKN/6/83	HKN83-06	637	508	2	79.75	20.25
10	O/PHI/5/95 (DQ164946)	PHI95-05	639	505	0	79.03	20.97

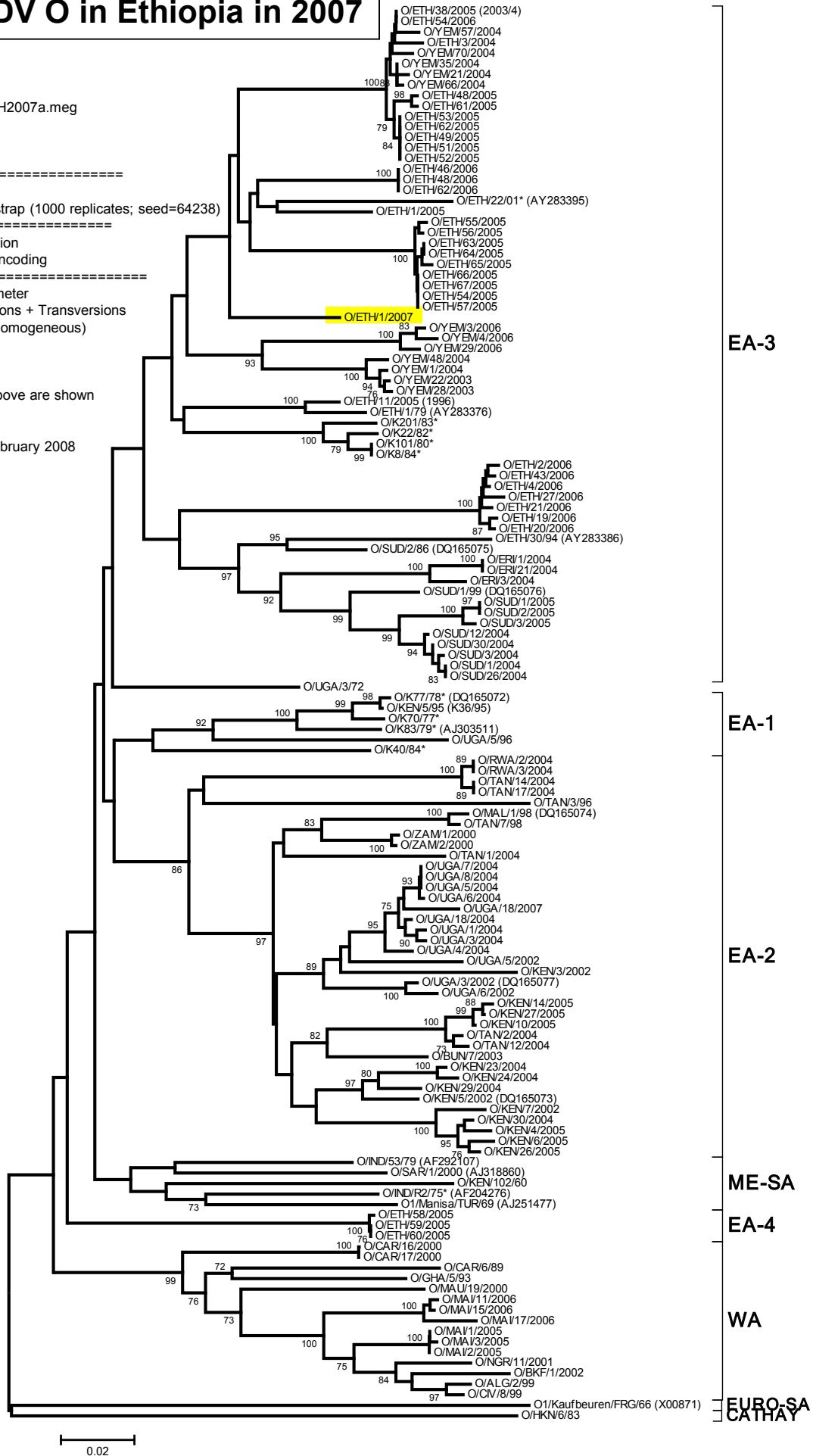
nt, nucleotides

*, not a WRLFMD reference number

Report on FMDV O in Ethiopia in 2007

Software: MEGA 4
 No. of Taxa : 134
 Data File : n:\levd\meg\db\fmdv\o\ETH2007a.meg
 Data Title : Ethiopia 2007
 Data Type : Nucleotide (Coding)
 Analysis : Phylogeny reconstruction
 Tree Inference : =====
 Method : Neighbor-Joining
 Phylogeny Test and options : Bootstrap (1000 replicates; seed=64238)
 Include Sites : =====
 Gaps/Missing Data : Pairwise Deletion
 Codon Positions : 1st+2nd+3rd+Noncoding
 Substitution Model : =====
 Model : Nucleotide: Kimura 2-parameter
 Substitutions to Include : d: Transitions + Transversions
 Pattern among Lineages : Same (Homogeneous)
 Rates among sites : Uniform rates
 No. of Sites : 642
 No Of Bootstrap Reps = 1000
 Only bootstrap values of 70% and above are shown

N.J. Knowles & J. Wadsworth, 19 February 2008



0.02