

Serotype: A		Report date: 20/02/2006					
WRL Ref No: SAU/15/2005							
Sender Ref: 697/26 (first bottle)							
Date collected: 27/12/2005							
Date received by WRLFMD: 07/01/2006		Topotype: Asia					
Date received for sequencing: 16/01/2006		Genotype/strain: none designated					
Species: Cattle		Sequence filename: SAU05-15.SEQ					
Material used: BTy1		Date sequence last updated: 19/02/2006					
Region sequenced: VP1		Total no. of comparisons: 844					
RT-PCR primers: A-1C562F/EUR-2B52R; A-1C612F/EUR-2B52R		Min. no. of nt for comparison: 300					
No. of Nt determined: 639		Total turn-around time: 44 days					
No. of ambiguities: 0		Sequencing time: 35 days					
Gene length: 639							
Comments: Partial VP1 sequences of viruses isolated from recent outbreaks of FMD A in Turkish Thrace (received from S. Aktas, SAP Institute, Turkey) are also closely related (~1.33% different).							
Ten Most Closely Related Viruses							
Pos.	Virus name	Filename	No. nt compared	No. nt matched	No. of ambiguities	% Identity	% Difference
1	A/SAU/16/2005	SAU05-16	639	639	0	100	0
2	A/IRN/7/2005	IRN05-07	639	634	0	99.22	0.78
3	A/IRN/5/2005	IRN05-05	639	633	0	99.06	0.94
4	A/IRN/16/2005	IRN05-16	639	631	0	98.75	1.25
5	A/IRN/10/2005	IRN05-10	639	631	0	98.75	1.25
6	A/IRN/13/2005	IRN05-13	639	631	0	98.75	1.25
7	A/IRN/1/2005	IRN05-01	639	631	0	98.75	1.25
8	A/IRN/2/2005	IRN05-02	639	631	0	98.75	1.25
9	A/IRN/18/2005	IRN05-18	639	629	0	98.44	1.56
10	A/IRN/4/2005	IRN05-04	639	629	0	98.44	1.56
Relationships to Reference Virus Strains							
Pos.	Virus name	Filename	No. nt compared	No. nt matched	No. of ambiguities	% Identity	% Difference
1	A/SAU/41/91	SAU91-41	636	541	0	85.06	14.94
2	A/IND/7/82 (1980)	IND82-07	639	542	0	84.82	15.18
3	A/IRN/87	IRN87--M	634	534	2	84.23	15.77
4	A/IRN/22/99	IRN99-22	636	532	0	83.65	16.35
5	A/TAI/118/87*	TAI87-AD	636	532	0	83.65	16.35
6	A/SAU/23/86	SAU86-23	639	530	0	82.94	17.06
7	A/IRN/1/96	IRN96-01	638	527	1	82.6	17.4
8	A/TAI/2/97	TAI97-02	636	525	0	82.55	17.45
9	A22/IRQ/24/64 (AJ251474)	IRQ64-24	639	524	0	82	18
10	A24/Cruzeiro/BRA/55 (AJ251476)	BRA55--C	639	510	0	79.81	20.19
nt, nucleotides							
*, not a WRLFMD reference number							

Serotype: A
WRL Ref No: SAU/16/2005
Sender Ref: 697/26 (second bottle)
Date collected: 27/12/2005
Date received by WRLFMD: 07/01/2006
Date received for sequencing: 16/01/2006
Species: Cattle
Material used: BTy1
Region sequenced: VP1
RT-PCR primers: A-1C562F/EUR-2B52R;
A-1C612F/EUR-2B52R
No. of Nt determined: 639
No. of ambiguities: 0
Gene length: 639

Report date: 20/02/2006
Topotype: Asia
Genotype/strain: not designated
Sequence filename: SAU05-16.SEQ
Date sequence last updated: 19/02/2006
Total no. of comparisons: 844
Min. no. of nt for comparison: 300
Total turn-around time: 44 days
Sequencing time: 35 days

Comments: Partial VP1 sequences of viruses isolated from recent outbreaks of FMD A in Turkish Thrace (received from S. Aktas, SAP Institute, Turkey) are also closely related (~1.33% different).

Ten Most Closely Related Viruses

Pos.	Virus name	Filename	No. nt compared	No. nt matched	No. of ambiguities	% Identity	% Difference
1	A/SAU/15/2005	SAU05-15	639	639	0	100	0
2	A/IRN/7/2005	IRN05-07	639	634	0	99.22	0.78
3	A/IRN/5/2005	IRN05-05	639	633	0	99.06	0.94
4	A/IRN/16/2005	IRN05-16	639	631	0	98.75	1.25
5	A/IRN/10/2005	IRN05-10	639	631	0	98.75	1.25
6	A/IRN/13/2005	IRN05-13	639	631	0	98.75	1.25
7	A/IRN/1/2005	IRN05-01	639	631	0	98.75	1.25
8	A/IRN/2/2005	IRN05-02	639	631	0	98.75	1.25
9	A/IRN/18/2005	IRN05-18	639	629	0	98.44	1.56
10	A/IRN/4/2005	IRN05-04	639	629	0	98.44	1.56

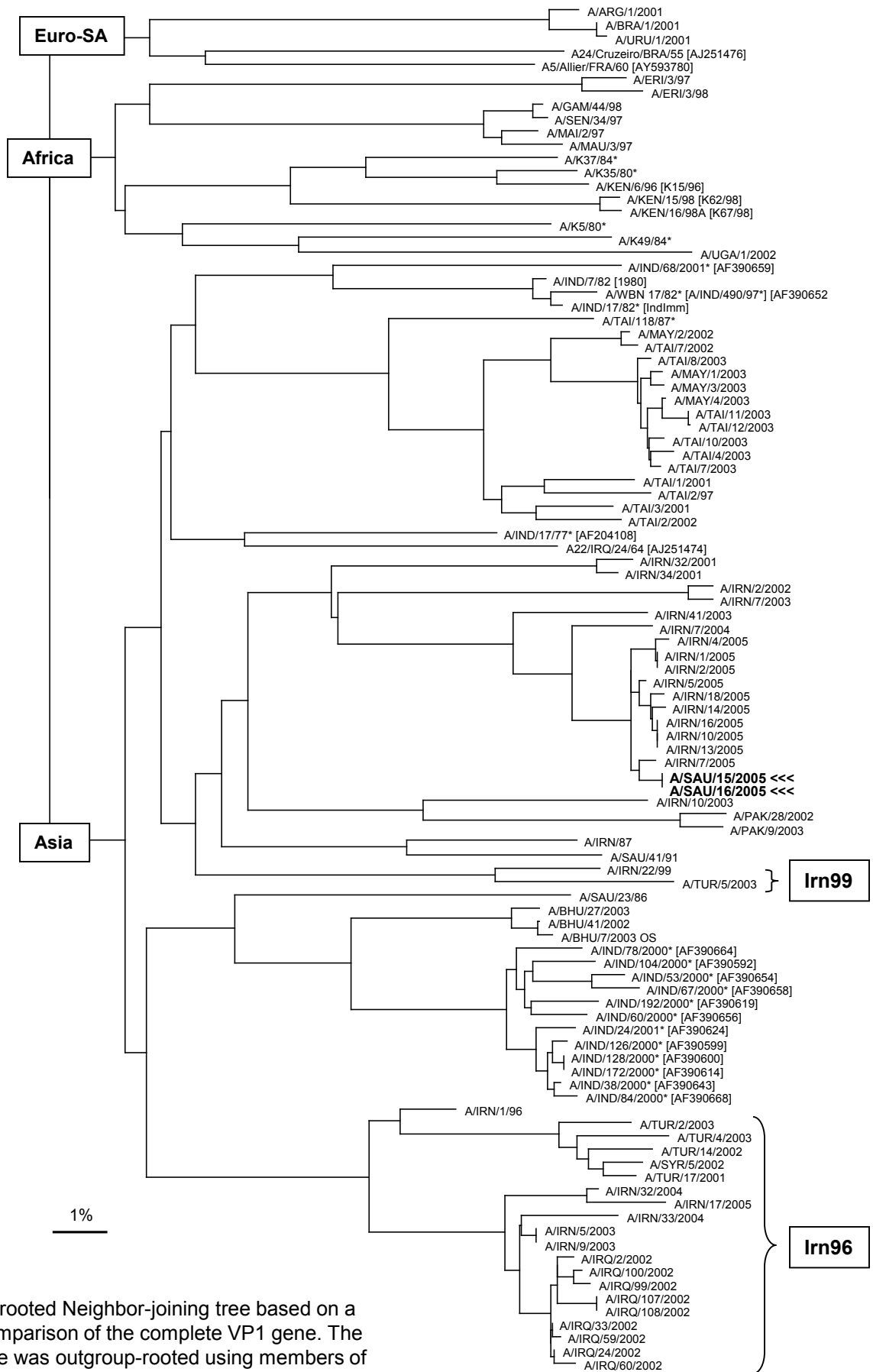
Relationships to Reference Virus Strains

Pos.	Virus name	Filename	No. nt compared	No. nt matched	No. of ambiguities	% Identity	% Difference
1	A/SAU/41/91	SAU91-41	636	541	0	85.06	14.94
2	A/IND/7/82 (1980)	IND82-07	639	542	0	84.82	15.18
3	A/IRN/87	IRN87--M	634	534	2	84.23	15.77
4	A/IRN/22/99	IRN99-22	636	532	0	83.65	16.35
5	A/TAI/118/87*	TAI87-AD	636	532	0	83.65	16.35
6	A/SAU/23/86	SAU86-23	639	530	0	82.94	17.06
7	A/IRN/1/96	IRN96-01	638	527	1	82.6	17.4
8	A/TAI/2/97	TAI97-02	636	525	0	82.55	17.45
9	A22/IRQ/24/64 (AJ251474)	IRQ64-24	639	524	0	82	18
10	A24/Cruzeiro/BRA/55 (AJ251476)	BRA55--C	639	510	0	79.81	20.19

nt, nucleotides

*, not a WRLFMD reference number

Report on FMDV A from Saudi Arabia in 2005



Unrooted Neighbor-joining tree based on a comparison of the complete VP1 gene. The tree was outgroup-rooted using members of the Euro-SA topotype.