

Serotype: SAT2  
WRL Ref No: MOZ/1/2002  
Date collected: 11/11/2002  
Date received: 17/05/2004  
Species: Bovine  
Material used: IRPI2 BTy1 & IRPI2 BTy2  
Region sequenced: VP1  
RT-PCR primers: SAT2-P1-1223F/SAT-2B208R;  
SAT2VP3-AB/SAT-2B208R  
No. of Nt determined: 648  
No. of ambiguities: 0  
Gene length: 648

Report date: 07/12/2004  
Topotype: none defined  
Genotype/strain: none designated  
Sequence filename: MOZ02-01.SEQ  
Date sequence last updated:  
08/09/2004  
Total no. of comparisons: 305  
Min. no. of nt for comparison: 300

Comments:

### Ten Most Closely Related Viruses

Pos.	Virus name	Filename	No. nt compared	No. nt matched	No. of ambiguities	% Identity	% Difference
1	SAT2/ZIM/1/2003	ZIM03-01	648	648	0	100	0
2	SAT2/ZIM/18/2003	ZIM03-18	648	648	0	100	0
3	SAT2/ZIM/19/2003	ZIM03-19	648	648	0	100	0
4	SAT2/ZIM/5/2003	ZIM03-05	648	648	0	100	0
5	SAT2/ZIM/22/2003	ZIM03-22	648	648	0	100	0
6	SAT2/ZIM/9/2003	ZIM03-09	648	648	0	100	0
7	SAT2/ZIM/16/2003	ZIM03-16	648	648	0	100	0
8	SAT2/ZIM/6/2003	ZIM03-06	648	647	0	99.85	0.15
9	SAT2/ZIM/2/2003	ZIM03-02	648	646	0	99.69	0.31
10	SAT2/ZIM/3/2003	ZIM03-03	648	646	0	99.69	0.31

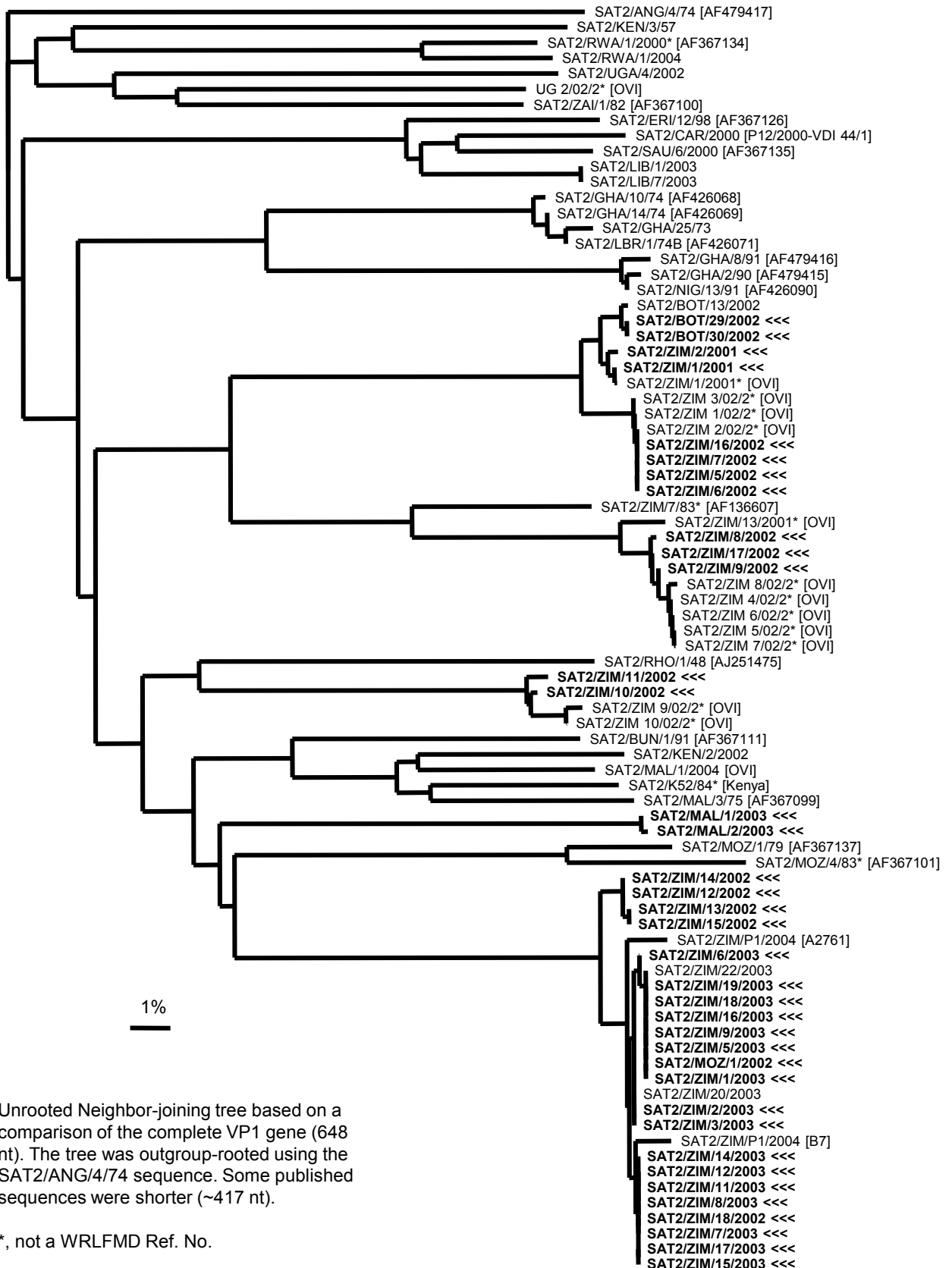
### Relationships to Reference Virus Strains

Pos.	Virus name	Filename	No. nt compared	No. nt matched	No. of ambiguities	% Identity	% Difference
1	SAT2/RSA/106/59 [AY593848]	RSA59--A	648	522	0	80.56	19.44
2	SAT2/K52/84 (Kenya)	KEN84K52	418	328	0	78.47	21.53
3	SAT2/RHO/1/48 [AJ251475]	ZAM48A01	648	495	0	76.39	23.61
4	SAT2/ZAM/3/81 (OVI)	ZAM81V03	198	151	6	76.26	23.74
5	SAT2/ZIM/7/83 [AF136607]	ZIM83A07	648	483	0	74.54	25.46
6	SAT2/ZIM/9/89	ZIM89-09	218	161	1	73.85	26.15
7	SAT2/KEN/11/60 [AY593849]	KEN60--A	648	464	0	71.6	28.4
8	SAT2/KEN/3/57	KEN57-03	648	457	0	70.52	29.48

nt, nucleotides

\*, not a WRLFMD reference number

# Report on FMDV SAT 2 isolates received from the Botswana Vaccine Institute during 2004



Unrooted Neighbor-joining tree based on a comparison of the complete VP1 gene (648 nt). The tree was outgroup-rooted using the SAT2/ANG/4/74 sequence. Some published sequences were shorter (~417 nt).

\* , not a WRLFMD Ref. No.