

Serotype: SAT1	Report date: 15/11/2004
WRL Ref No: ZAM/3/2000	
Date collected: 22/05/2000	
Date received: 17/05/2004	
Species: Bovine	Topotype: Northwest Zimbabwe (NWZ)
Material used: IRPI2 BTY1	Genotype/strain: none designated
Region sequenced: VP1	Sequence filename: ZAM00-03.SEQ
RT-PCR primers: SAT1U-OS/SAT-2B208R	Date sequence last updated: 26/08/2004
No. of Nt determined: 663	Total no. of comparisons: 209
No. of ambiguities: 0	Min. no. of nt for comparison: 300
Gene length: 663	

Comments:

### Ten Most Closely Related Viruses

Pos.	Virus name	Filename	No. nt compared	No. nt matched	No. of ambiguities	% Identity	% Difference
1	SAT1/MAL/3/2000	MAL00-03	663	661	0	99.7	0.3
2	SAT1/MAL/2/2000	MAL00-02	663	661	0	99.7	0.3
3	SAT1/MAL/4/2000	MAL00-04	663	660	0	99.55	0.45
4	SAT1/MAL/1/2001	MAL01-01	663	657	0	99.1	0.9
5	SAT1/MAL/2/2001	MAL01-02	663	656	0	98.94	1.06
6	SAT1/TAN/25/99	TAN99-25	315	277	16	87.94	12.06
7	SAT1/ZAM/5/2004	ZAM04-05	661	568	2	85.93	14.07
8	SAT1/ZAM/16/2004	ZAM04-16	663	569	0	85.82	14.18
9	SAT1/ZAM/3/2004	ZAM04-03	662	568	1	85.8	14.2
10	SAT1/ZAM/6/2004	ZAM04-06	662	568	1	85.8	14.2

### Relationships to Reference Virus Strains

Pos.	Virus name	Filename	No. nt compared	No. nt matched	No. of ambiguities	% Identity	% Difference
1	SAT1/SAR/9/81	SAR81-09	629	484	11	76.95	23.05
2	SAT1/RV/11/37 AY593839	RHO37-11	663	507	0	76.47	23.53
3	SAT1/RHO/5/66 AY593846	RHO66-05	663	503	0	75.87	24.13
4	SAT1/SWA/40/61 AY593843	SWA61-40	663	498	0	75.11	24.89
5	SAT1/SA/13/61 AY593842	SAR61-13	663	494	0	74.51	25.49
6	SAT1/SA/2/58 AY593841	SAR58-02	663	491	0	74.06	25.94
7	SAT1/BOT/1/68 Z98203	BOT68-B1	663	491	0	74.06	25.94
8	SAT1/SWA/1/49 AY593840	SWA49-01	663	491	0	74.06	25.94
9	SAT1/BEC/1/48 AY593838	BEC48-01	663	478	0	72.1	27.9
10	SAT1/ISR/4/62 AY593844	ISR62-04	663	465	0	70.14	29.86

nt, nucleotides

\*, not a WRLFMD reference number

Serotype: SAT1	Report date: 15/11/2004
WRL Ref No: ZAM/4/2000	
Date collected: 16/06/2000	
Date received: 17/05/2004	
Species: Bovine	
Material used: IRPI2 BTY1	Topotype: Western Zimbabwe (WZ)
Region sequenced: VP1	Genotype/strain: none designated
RT-PCR primers: SAT1U-OS/SAT-2B208R	Sequence filename: ZAM00-04.SEQ
No. of Nt determined: 663	Date sequence last updated: 26/08/2004
No. of ambiguities: 0	Total no. of comparisons: 209
Gene length: 663	Min. no. of nt for comparison: 300

Comments:

### Ten Most Closely Related Viruses

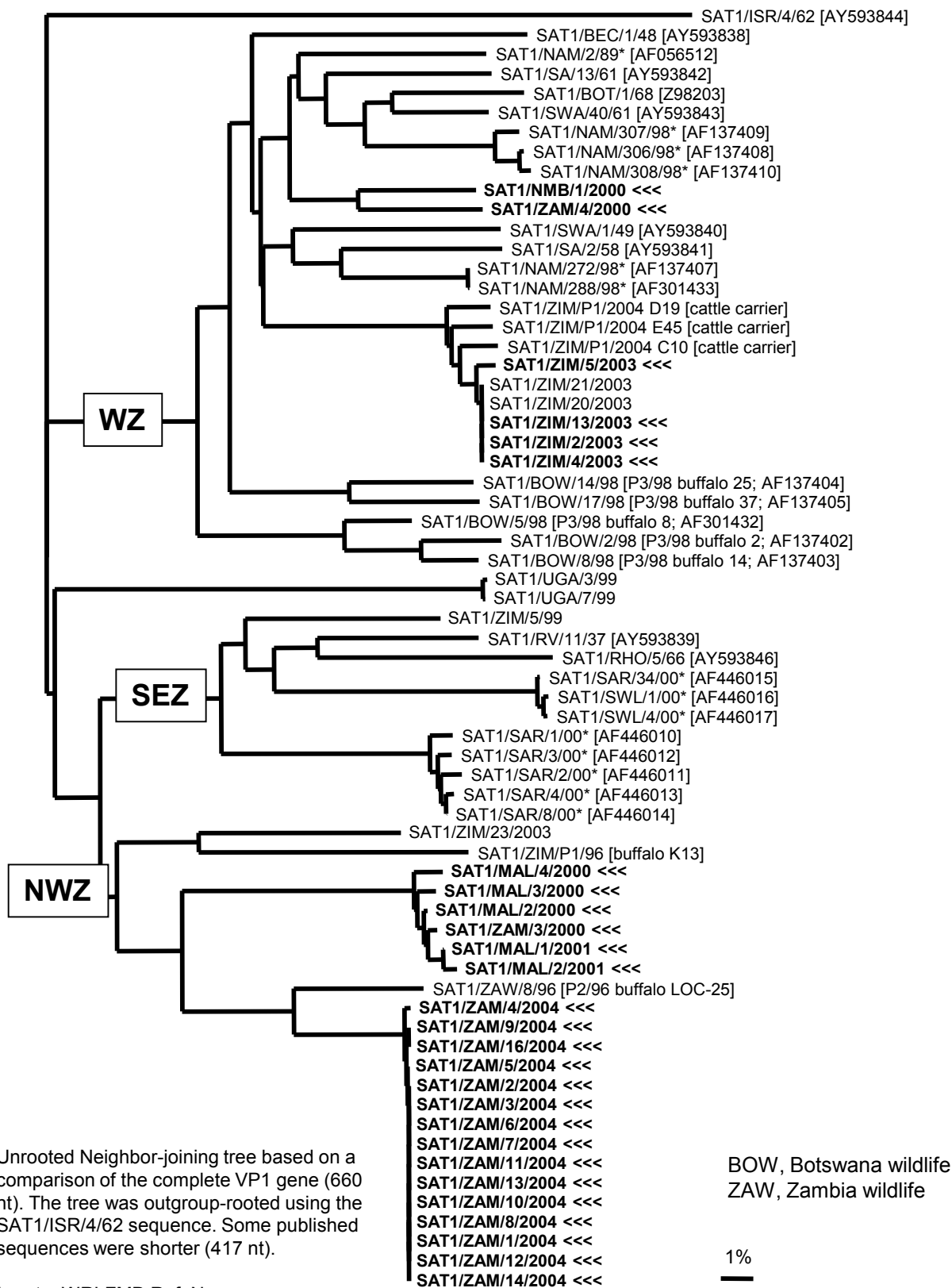
Pos.	Virus name	Filename	No. nt compared	No. nt matched	No. of ambiguities	% Identity	% Difference
1	SAT1/ZIM/P45/91 buffalo MT6	ZIM91B72	392	364	5	92.86	7.14
2	SAT1/NMB/1/2000	NMB00-01	663	614	0	92.61	7.39
3	SAT1/BOT/P3/98 buffalo 25	BOW98-14	376	335	5	89.1	10.9
4	SAT1/NAM/307/98 (AF137409)	NAM98-AD	405	358	0	88.4	11.6
5	SAT1/BOT/P3/98 buffalo 24	BOW98-13	352	311	4	88.35	11.65
6	SAT1/BOT/P3/98 buffalo 25 (AF137404)	BOW98-AD	399	352	0	88.22	11.78
7	SAT1/SWA/2/89 (AF056512)	NAM89-AA	420	369	0	87.86	12.14
8	SAT1//BOT/P3/98 buffalo 37 (AF137405)	BOW98-AE	405	354	0	87.41	12.59
9	SAT1/NAM/306/98 (AF137408)	NAM98-AC	405	354	0	87.41	12.59
10	SAT1/ZIM/5/2003**	ZIM03-05	663	577	0	87.03	12.97

### Relationships to Reference Virus Strains

Pos.	Virus name	Filename	No. nt compared	No. nt matched	No. of ambiguities	% Identity	% Difference
1	SAT1/SA/13/61 AY593842	SAR61-13	663	590	0	88.99	11.01
2	SAT1/SWA/1/49 AY593840	SWA49-01	663	580	0	87.48	12.52
3	SAT1/SWA/40/61 AY593843	SWA61-40	663	578	0	87.18	12.82
4	SAT1/BOT/1/68 Z98203	BOT68-B1	663	575	0	86.73	13.27
5	SAT1/SA/2/58 AY593841	SAR58-02	663	569	0	85.82	14.18
6	SAT1/BEC/1/48 AY593838	BEC48-01	663	563	0	84.92	15.08
7	SAT1/RHO/5/66 AY593846	RHO66-05	663	508	0	76.62	23.38
8	SAT1/RV/11/37 AY593839	RHO37-11	663	500	0	75.41	24.59
9	SAT1/SAR/9/81	SAR81-09	629	468	11	74.4	25.6
10	SAT1/ISR/4/62 AY593844	ISR62-04	663	449	0	67.72	32.28

nt, nucleotides  
 \*, not a WRLFMD reference number  
 \*\*, this sample also contained FMDV SAT2

# Report on FMDV SAT 1 isolates received from the Botswana Vaccine Institute during 2004



\*, not a WRLFMD Ref. No.