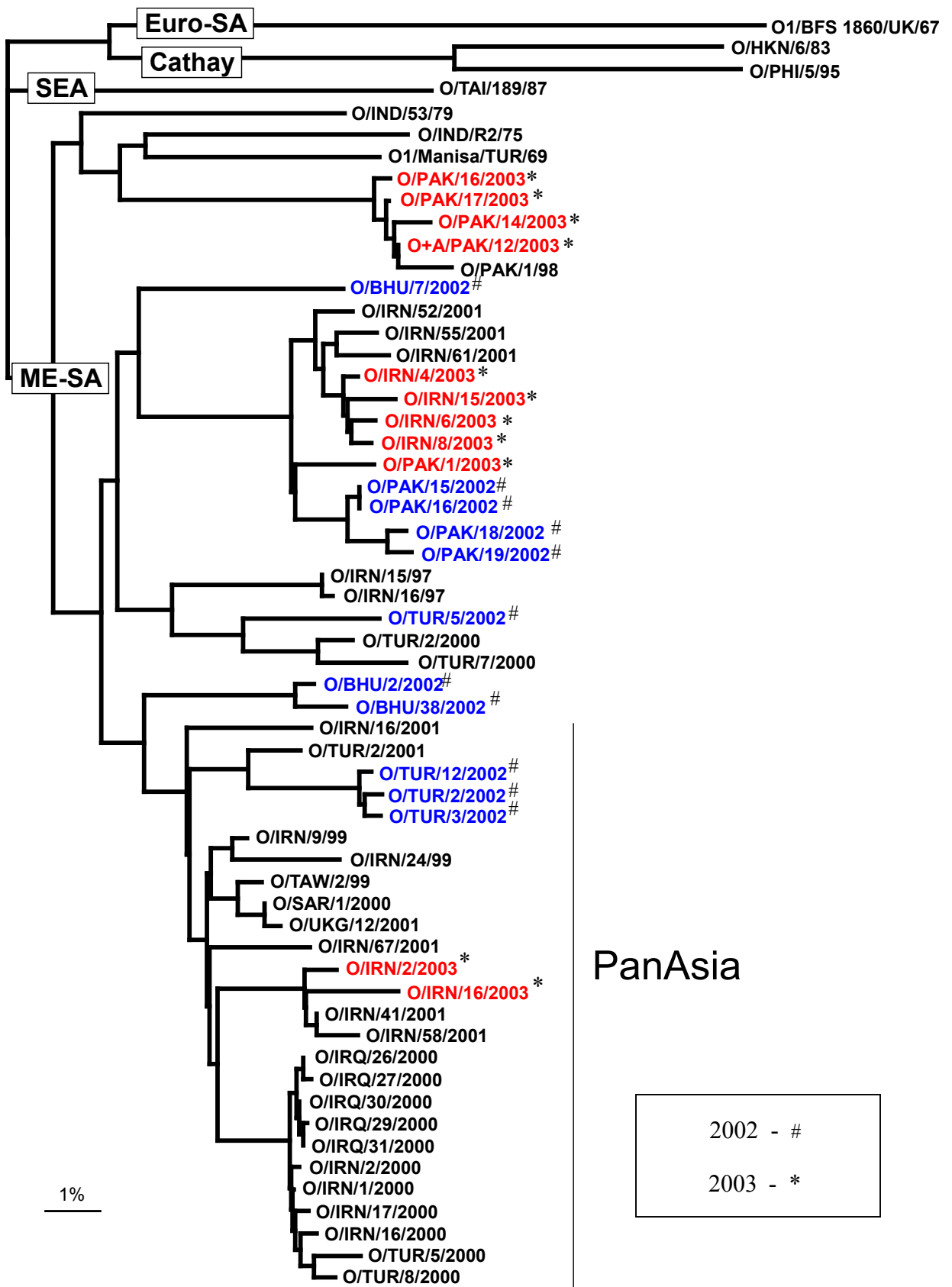


Report from the Molecular Epidemiology Section of the Experimental Epidemiology Group to the Head of the World Reference Laboratory for FMD (Non-QAU Form)

Serotype: O	Date: 30/06/2003						
Virus isolate: BHU/38/2002	Reported by: N.J. Knowles						
Material used: BTY1	Signed (file copy only):						
Region sequenced: VP1	Seq. filename: BHU02-38						
RT-PCR primer set: O-1C272F/NK61							
Topotype: ME-SA	No. of ambiguities: 1						
Genotype/strain: PanAsia ?	Date seq. last updated: 30/06/2003						
No. of nt determined / no. in gene: 638 / 639	Total no. of comparisons made: 1284						
Comments: This isolate may be on the limits of what we define as the PanAsia strain.							
Ten Most Closely Related Viruses							
Pos.	Virus name	Filename	No. nt compared	No. nt matched	No. of ambiguities	% Identity	% Difference
1	O/BHU/2/2002	BHU02-02	637	629	2	98.74	1.26
2	O/IND/287/99*	IND99-AP	163	159	2	97.55	2.45
3	O/IND/289/97*	IND97-AW	164	158	1	96.34	3.66
4	O/IND/209/99 (1998)*	IND98-AU	164	158	1	96.34	3.66
5	O/IND/61/97 (1996)*	IND96-AB	164	158	1	96.34	3.66
6	O/SAU/76/94	SAU94-76	152	146	1	96.05	3.95
7	O/IND/281/97*	IND97-AV	164	157	1	95.73	4.27
8	O/IND/65/98*	IND98-AF	164	157	1	95.73	4.27
9	O/IND/57/98*	IND98-AD	164	157	1	95.73	4.27
10	O/IND/56/98*	IND98-AC	164	157	1	95.73	4.27
Relationships to Reference Virus Strains							
Pos.	Virus name	Filename	No. nt compared	No. nt matched	No. of ambiguities	% Identity	% Difference
1	O/TAW/2/99	TAW99-02	638	601	1	94.20	5.80
2	O/IND/53/79	IND79A53	638	569	1	89.18	10.82
3	O/IND/R2/75*	IND75--A	638	567	1	88.87	11.13
4	O1/Manisa/TUR/69	TUR69--E	638	566	1	88.71	11.29
5	O/MOR/1/91	MOR91-01	206	178	4	86.41	13.59
6	O/TAI/189/87*	TAI87--B	527	454	3	86.15	13.85
7	O/ISR/1/88	ISR88-01	192	165	6	85.94	14.06
8	O/PHI/5/95	PHI95-05	515	421	7	81.75	18.25
9	O/HKN/6/83	HKN83-06	636	519	3	81.60	18.40
10	O1/BFS 1860/UK/67	UKG67--A	638	505	1	79.15	20.85
nt, nucleotides							
*, not a WRLFMD reference number							

cc. Head of Experimental Epidemiology Group
cc. Head of Vesicular Diseases Group



Neighbor-joining tree showing the relationships between recent FMD O viruses from Iran, Turkey, Pakistan and Bhutan. Isolates from 2002 are highlighted in blue and those from 2003 are in red.