

FAO World Reference Laboratory for Foot-and-Mouth Disease (WRLFMD)

Genotyping Report

FMDV serotype: O
Country: Turkey
Year: 2017
Batch: WRLMEG/2017/00063
No. of sequences: 1
Report date: 2nd January 2018
Report generated by: Nick Knowles
Report checked by: Kasia Bankowska

This report is prepared on behalf of the FMD Institute (Ankara, Turkey) and covers a VP1 sequence submitted to the WRLFMD on 29 December 2017.



Copyright ©2018 The Pirbright Institute, Ash Road, Pirbright, Woking GU24 0NF, United Kingdom.

www: <http://www.wrlfmd.org/>

email: reporting@pirbright.ac.uk

The contents of this report should not be reproduced without permission.

Virus sample name:	TUR/448/2017
Sender reference:	O/Antep/448/2017
Location of origin:	Antep
Country of origin:	Turkey
Date of collection:	2017
Host species:	sheep
Serotype:	O
Topotype:	ME-SA
Lineage:	PanAsia-2
Sublineage:	ANT-10
Sequence length:	633
Ambiguities:	0
Material submitted for sequencing:	n/a
Harvest date of material:	n/a
Primers:	n/a
Received for sequencing:	n/a
Created:	29/12/2017
Last updated:	29/12/2017
VIBASys IDs: sample 35413, genome 35414, sequence viba_35415, sequencing info 35416	

Most Closely Related Sequences

sequence	virus name	Host	% Id.	# Ambig.	serotype	topotype	lineage	sublineage
viba_33631	IRN/3/2017	sheep	98.6	0	O	ME-SA	PanAsia-2	ANT-10
viba_33623	IRN/36/2016	sheep	98.6	0	O	ME-SA	PanAsia-2	ANT-10
viba_33635	IRN/5/2017	cattle	98.6	0	O	ME-SA	PanAsia-2	ANT-10
viba_33619	IRN/35/2016	cattle	98.4	0	O	ME-SA	PanAsia-2	ANT-10
viba_33639	IRN/8/2017	cattle	98.4	0	O	ME-SA	PanAsia-2	ANT-10
viba_33627	IRN/37/2016	cattle	98.4	0	O	ME-SA	PanAsia-2	ANT-10
viba_34937	PAK/7/2016	cattle	98.3	0	O	ME-SA	PanAsia-2	ANT-10
viba_33643	IRN/11/2017	cattle	98.1	0	O	ME-SA	PanAsia-2	ANT-10
viba_33615	IRN/31/2016	cattle	98.1	0	O	ME-SA	PanAsia-2	ANT-10
viba_34280	AFG/35/2017	cattle	97.9	0	O	ME-SA	PanAsia-2	ANT-10

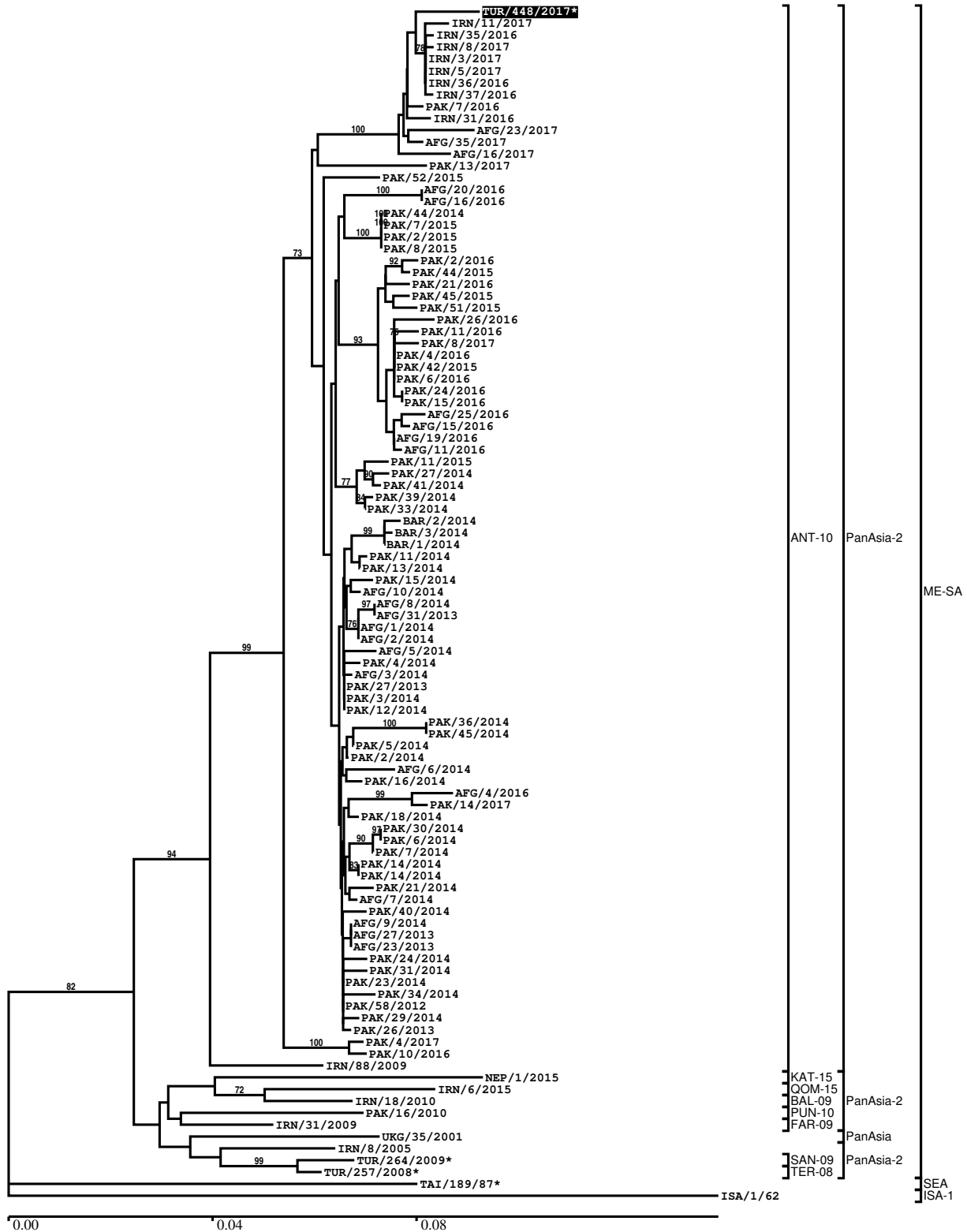
Most Closely Related Prototype Sequences

see http://www.wrlfmd.org/fmd_genotyping/prototypes.htm

sequence	virus name	Host	% Id.	# Ambig.	serotype	topotype	lineage	sublineage
viba_719	IRN/88/2009		93.2	0	O	ME-SA	PanAsia-2	ANT-10
viba_766	IRN/31/2009	cattle	91.5	0	O	ME-SA	PanAsia-2	FAR-09
viba_491	TUR/257/2008		91.0	0	O	ME-SA	PanAsia-2	TER-08
viba_354	PAK/16/2010	cattle	90.8	0	O	ME-SA	PanAsia-2	PUN-10
viba_650	IRN/8/2005	ovine	90.7	0	O	ME-SA	PanAsia-2	
viba_666	IRN/18/2010	cattle	90.4	0	O	ME-SA	PanAsia-2	BAL-09
viba_505	TUR/264/2009		90.4	0	O	ME-SA	PanAsia-2	SAN-09
viba_285	UKG/35/2001	porcine	89.7	0	O	ME-SA	PanAsia	
viba_860	IRN/6/2015	cattle	89.7	0	O	ME-SA	PanAsia-2	QOM-15
viba_850	NEP/1/2015	cattle	89.7	1	O	ME-SA	PanAsia-2	KAT-15

Report on FMDV O in Turkey in 2017

Batch: WRLMEG/2017/00063



*, not a WRLFMD Reference Number

Analysis Parameters

VP1 subsequence extractor:	vp1_O
Query sequence set:	WRLMEG/2017/00063-Turkey-O (1 sequences)
Sequence database set:	allseqs_O (3670 sequences)
Prototype sequence set:	!prototypes_O (48 sequences)
Number of related sequences reported:	10
Minimal VP1 subsequence match length	600
Sequence alignment method:	muscle (default parameters)
Sequence alignment length:	636
Phylogeny reconstruction method:	fdnadist, fneighbor
Number of bootstrap samples:	1000
Random seed for bootstrapping:	1
Displaying bootstrap values above:	70.0%
Number of sequences in tree capped at:	100
Number of prototype sequences in tree:	10
VIBASys version:	reflabs-1.1.2

Sequences in the Phylogenetic Tree

All sequences in the tree are in taxonomic group FMDV/O

label	accession	host(s)	lab	country	taxonomic information
TUR/448/2017*	n/a	sheep	FMDI	Turkey	ME-SA/PanAsia-2/ANT-10
IRN/11/2017	n/a	cattle	WRLFMD	Iran	ME-SA/PanAsia-2/ANT-10
IRN/35/2016	n/a	cattle	WRLFMD	Iran	ME-SA/PanAsia-2/ANT-10
IRN/8/2017	n/a	cattle	WRLFMD	Iran	ME-SA/PanAsia-2/ANT-10
IRN/3/2017	n/a	sheep	WRLFMD	Iran	ME-SA/PanAsia-2/ANT-10
IRN/5/2017	n/a	cattle	WRLFMD	Iran	ME-SA/PanAsia-2/ANT-10
IRN/36/2016	n/a	sheep	WRLFMD	Iran	ME-SA/PanAsia-2/ANT-10
IRN/37/2016	n/a	cattle	WRLFMD	Iran	ME-SA/PanAsia-2/ANT-10
PAK/7/2016	n/a	cattle	WRLFMD	Pakistan	ME-SA/PanAsia-2/ANT-10
IRN/31/2016	n/a	cattle	WRLFMD	Iran	ME-SA/PanAsia-2/ANT-10
AFG/23/2017	n/a	cattle	WRLFMD	Afghanistan	ME-SA/PanAsia-2/ANT-10
AFG/35/2017	n/a	cattle	WRLFMD	Afghanistan	ME-SA/PanAsia-2/ANT-10
AFG/16/2017	n/a	cattle	WRLFMD	Afghanistan	ME-SA/PanAsia-2/ANT-10
PAK/13/2017	n/a	cattle	WRLFMD	Pakistan	ME-SA/PanAsia-2/ANT-10
PAK/52/2015	n/a	cattle	WRLFMD	Pakistan	ME-SA/PanAsia-2/ANT-10
AFG/20/2016	n/a	bovine	WRLFMD	Afghanistan	ME-SA/PanAsia-2/ANT-10
AFG/16/2016	n/a	bovine	WRLFMD	Afghanistan	ME-SA/PanAsia-2/ANT-10
PAK/44/2014	n/a	water buffalo	WRLFMD	Pakistan	ME-SA/PanAsia-2/ANT-10
PAK/7/2015	n/a	cattle	WRLFMD	Pakistan	ME-SA/PanAsia-2/ANT-10
PAK/2/2015	n/a	cattle	WRLFMD	Pakistan	ME-SA/PanAsia-2/ANT-10
PAK/8/2015	n/a	cattle	WRLFMD	Pakistan	ME-SA/PanAsia-2/ANT-10
PAK/2/2016	n/a	water buffalo	WRLFMD	Pakistan	ME-SA/PanAsia-2/ANT-10
PAK/44/2015	n/a	cattle	WRLFMD	Pakistan	ME-SA/PanAsia-2/ANT-10
PAK/21/2016	n/a	cattle	WRLFMD	Pakistan	ME-SA/PanAsia-2/ANT-10
PAK/45/2015	n/a	cattle	WRLFMD	Pakistan	ME-SA/PanAsia-2/ANT-10
PAK/51/2015	n/a	water buffalo	WRLFMD	Pakistan	ME-SA/PanAsia-2/ANT-10
PAK/26/2016	n/a	cattle	WRLFMD	Pakistan	ME-SA/PanAsia-2/ANT-10
PAK/11/2016	n/a	water buffalo	WRLFMD	Pakistan	ME-SA/PanAsia-2/ANT-10
PAK/8/2017	n/a	cattle	WRLFMD	Pakistan	ME-SA/PanAsia-2/ANT-10
PAK/4/2016	n/a	cattle	WRLFMD	Pakistan	ME-SA/PanAsia-2/ANT-10
PAK/42/2015	n/a	cattle	WRLFMD	Pakistan	ME-SA/PanAsia-2/ANT-10
PAK/6/2016	n/a	water buffalo	WRLFMD	Pakistan	ME-SA/PanAsia-2/ANT-10
PAK/24/2016	n/a	cattle	WRLFMD	Pakistan	ME-SA/PanAsia-2/ANT-10
PAK/15/2016	n/a	cattle	WRLFMD	Pakistan	ME-SA/PanAsia-2/ANT-10
AFG/25/2016	n/a	bovine	WRLFMD	Afghanistan	ME-SA/PanAsia-2/ANT-10
AFG/15/2016	n/a	bovine	WRLFMD	Afghanistan	ME-SA/PanAsia-2/ANT-10

continued on next page

label	accession	host(s)	lab	country	taxonomic information
AFG/19/2016	n/a	bovine	WRLFMD	Afghanistan	ME-SA/PanAsia-2/ANT-10
AFG/11/2016	n/a	bovine	WRLFMD	Afghanistan	ME-SA/PanAsia-2/ANT-10
PAK/11/2015	n/a	cattle	WRLFMD	Pakistan	ME-SA/PanAsia-2/ANT-10
PAK/27/2014	n/a	cattle	WRLFMD	Pakistan	ME-SA/PanAsia-2/ANT-10
PAK/41/2014	n/a	cattle	WRLFMD	Pakistan	ME-SA/PanAsia-2/ANT-10
PAK/39/2014	n/a	cattle	WRLFMD	Pakistan	ME-SA/PanAsia-2/ANT-10
PAK/33/2014	n/a	cattle	WRLFMD	Pakistan	ME-SA/PanAsia-2/ANT-10
BAR/2/2014	n/a	cattle	WRLFMD	Bahrain	ME-SA/PanAsia-2/ANT-10
BAR/3/2014	n/a	cattle	WRLFMD	Bahrain	ME-SA/PanAsia-2/ANT-10
BAR/1/2014	n/a	cattle	WRLFMD	Bahrain	ME-SA/PanAsia-2/ANT-10
PAK/11/2014	n/a	cattle	WRLFMD	Pakistan	ME-SA/PanAsia-2/ANT-10
PAK/13/2014	n/a	cattle	WRLFMD	Pakistan	ME-SA/PanAsia-2/ANT-10
PAK/15/2014	n/a	cattle	WRLFMD	Pakistan	ME-SA/PanAsia-2/ANT-10
AFG/10/2014	n/a	cattle	WRLFMD	Afghanistan	ME-SA/PanAsia-2/ANT-10
AFG/8/2014	n/a	cattle	WRLFMD	Afghanistan	ME-SA/PanAsia-2/ANT-10
AFG/31/2013	n/a	cattle	WRLFMD	Afghanistan	ME-SA/PanAsia-2/ANT-10
AFG/1/2014	n/a	cattle	WRLFMD	Afghanistan	ME-SA/PanAsia-2/ANT-10
AFG/2/2014	n/a	cattle	WRLFMD	Afghanistan	ME-SA/PanAsia-2/ANT-10
AFG/5/2014	n/a	cattle	WRLFMD	Afghanistan	ME-SA/PanAsia-2/ANT-10
PAK/4/2014	n/a	water buffalo	WRLFMD	Pakistan	ME-SA/PanAsia-2/ANT-10
AFG/3/2014	n/a	cattle	WRLFMD	Afghanistan	ME-SA/PanAsia-2/ANT-10
PAK/27/2013	n/a	water buffalo	WRLFMD	Pakistan	ME-SA/PanAsia-2/ANT-10
PAK/3/2014	n/a	cattle	WRLFMD	Pakistan	ME-SA/PanAsia-2/ANT-10
PAK/12/2014	n/a	cattle	WRLFMD	Pakistan	ME-SA/PanAsia-2/ANT-10
PAK/36/2014	n/a	water buffalo	WRLFMD	Pakistan	ME-SA/PanAsia-2/ANT-10
PAK/45/2014	n/a	cattle	WRLFMD	Pakistan	ME-SA/PanAsia-2/ANT-10
PAK/5/2014	n/a	cattle	WRLFMD	Pakistan	ME-SA/PanAsia-2/ANT-10
PAK/2/2014	n/a	water buffalo	WRLFMD	Pakistan	ME-SA/PanAsia-2/ANT-10
AFG/6/2014	n/a	cattle	WRLFMD	Afghanistan	ME-SA/PanAsia-2/ANT-10
PAK/16/2014	n/a	water buffalo	WRLFMD	Pakistan	ME-SA/PanAsia-2/ANT-10
AFG/4/2016	n/a	bovine	WRLFMD	Afghanistan	ME-SA/PanAsia-2/ANT-10
PAK/14/2017	n/a	cattle	WRLFMD	Pakistan	ME-SA/PanAsia-2/ANT-10
PAK/18/2014	n/a	water buffalo	WRLFMD	Pakistan	ME-SA/PanAsia-2/ANT-10
PAK/30/2014	n/a	cattle	WRLFMD	Pakistan	ME-SA/PanAsia-2/ANT-10
PAK/6/2014	n/a	cattle	WRLFMD	Pakistan	ME-SA/PanAsia-2/ANT-10
PAK/7/2014	n/a	cattle	WRLFMD	Pakistan	ME-SA/PanAsia-2/ANT-10
PAK/14/2014	n/a	cattle	WRLFMD	Pakistan	ME-SA/PanAsia-2/ANT-10
PAK/14/2014	n/a	cattle	WRLFMD	Pakistan	ME-SA/PanAsia-2/ANT-10
PAK/21/2014	n/a	cattle	WRLFMD	Pakistan	ME-SA/PanAsia-2/ANT-10
AFG/7/2014	n/a	cattle	WRLFMD	Afghanistan	ME-SA/PanAsia-2/ANT-10
PAK/40/2014	n/a	water buffalo	WRLFMD	Pakistan	ME-SA/PanAsia-2/ANT-10
AFG/9/2014	n/a	cattle	WRLFMD	Afghanistan	ME-SA/PanAsia-2/ANT-10
AFG/27/2013	n/a	cattle	WRLFMD	Afghanistan	ME-SA/PanAsia-2/ANT-10
AFG/23/2013	n/a	cattle	WRLFMD	Afghanistan	ME-SA/PanAsia-2/ANT-10
PAK/24/2014	n/a	cattle	WRLFMD	Pakistan	ME-SA/PanAsia-2/ANT-10
PAK/31/2014	n/a	water buffalo	WRLFMD	Pakistan	ME-SA/PanAsia-2/ANT-10
PAK/23/2014	n/a	water buffalo	WRLFMD	Pakistan	ME-SA/PanAsia-2/ANT-10
PAK/34/2014	n/a	cattle	WRLFMD	Pakistan	ME-SA/PanAsia-2/ANT-10
PAK/58/2012	n/a	cattle	WRLFMD	Pakistan	ME-SA/PanAsia-2/ANT-10
PAK/29/2014	n/a	water buffalo	WRLFMD	Pakistan	ME-SA/PanAsia-2/ANT-10
PAK/26/2013	n/a	cattle	WRLFMD	Pakistan	ME-SA/PanAsia-2/ANT-10
PAK/4/2017	n/a	water buffalo	WRLFMD	Pakistan	ME-SA/PanAsia-2/ANT-10
PAK/10/2016	n/a	cattle	WRLFMD	Pakistan	ME-SA/PanAsia-2/ANT-10
IRN/88/2009	KY091282	n/a	WRLFMD	Iran	ME-SA/PanAsia-2/ANT-10
NEP/1/2015	n/a	cattle	WRLFMD	Nepal	ME-SA/PanAsia-2/KAT-15
IRN/6/2015	n/a	cattle	WRLFMD	Iran	ME-SA/PanAsia-2/QOM-15
IRN/18/2010	KY091283	cattle	WRLFMD	Iran	ME-SA/PanAsia-2/BAL-09
PAK/16/2010	KY091285	cattle	WRLFMD	Pakistan	ME-SA/PanAsia-2/PUN-10
IRN/31/2009	KY091284	cattle	WRLFMD	Iran	ME-SA/PanAsia-2/FAR-09
UKG/35/2001	AJ539141	porcine	PIADC	United Kingdom	ME-SA/PanAsia
IRN/8/2005	KY091281	ovine	WRLFMD	Iran	ME-SA/PanAsia-2
TUR/264/2009*	n/a	n/a	FMDI-Ankara	Turkey	ME-SA/PanAsia-2/SAN-09
TUR/257/2008*	n/a	n/a	FMDI-Ankara	Turkey	ME-SA/PanAsia-2/TER-08
TAI/189/87*	KY091288	bovine	TRRL	Thailand	SEA
ISA/1/62	AJ303500	n/a	WRLFMD	Indonesia	ISA-1

*, not a WRLFMD Reference Number

n/a, not available