

FAO World Reference Laboratory for Foot-and-Mouth Disease (WRLFMD)

Genotyping Report

FMDV serotype: O
Country: Palestinian AT
Year: 2017
Batch: WRLFMD/2017/00005
No. of sequences: 8
Report date: 28th March 2017
Report generated by: Nick Knowles
Report checked by: Antonello Di Nardo



Copyright © 2017 The Pirbright Institute, Ash Road, Pirbright, Woking GU24 0NF, United Kingdom.

www: <http://www.wrlfmd.org/>

email: reporting@pirbright.ac.uk

The contents of this report should not be reproduced without permission.

Virus sample name:	PAT/1/2017
Sender reference:	(9) 283471-700
Location of origin:	East of Jabalya, Gaza Strip
Country of origin:	Palestinian AT
Date of collection:	08/02/2017
Host species:	cattle
Serotype:	O
Topotype:	EA-3
Lineage:	
Sublineage:	
Sequence length:	633
Ambiguities:	0
Material submitted for sequencing:	BTy1
Harvest date of material:	21/03/2017
Primers:	O-1C244F/EUR-2B52R; O-1C272F/EUR-2B52R
Received for sequencing:	27/03/2017
Created:	28/03/2017
Last updated:	28/03/2017
VIBASys IDs: sample 32334, genome 32335, sequence viba_32336, sequencing info 32337	

Most Closely Related Sequences

sequence	virus name	Host	% Id.	# Ambig.	serotype	topotype	lineage	sublineage
viba_32344	PAT/4/2017	cattle	100.0	0	O	EA-3		
viba_32311	ISR/3/2017	cattle	100.0	0	O	EA-3		
viba_32315	ISR/4/2017	cattle	100.0	0	O	EA-3		
viba_32307	ISR/2/2017	cattle	100.0	0	O	EA-3		
viba_32319	ISR/5/2017	cattle	100.0	0	O	EA-3		
viba_32360	PAT/9/2017	cattle	100.0	0	O	EA-3		
viba_32327	ISR/7/2017	cattle	100.0	0	O	EA-3		
viba_32303	ISR/1/2017	cattle	100.0	0	O	EA-3		
viba_32331	ISR/8/2017	cattle	100.0	0	O	EA-3		
viba_32323	ISR/6/2017	cattle	100.0	0	O	EA-3		

Most Closely Related Prototype Sequences

see http://www.wrlfmd.org/fmd_genotyping/prototypes.htm

sequence	virus name	Host	% Id.	# Ambig.	serotype	topotype	lineage	sublineage
viba_116	SUD/2/86	bovine	88.2	0	O	EA-3		
viba_854	ETH/1/2007	cattle	84.7	0	O	EA-3		
viba_617	IND/53/79	bovine	84.2	0	O	ME-SA		
viba_285	UKG/35/2001	porcine	84.1	0	O	ME-SA	PanAsia	
viba_408	ETH/3/2004	cattle	84.0	0	O	EA-3		
viba_263	TAN/2/2004	bovine	83.6	0	O	EA-2		
viba_221	MAL/1/98		83.6	0	O	EA-2		
viba_85	UGA/3/2002		83.6	0	O	EA-2		
viba_359	Manisa/TUR/69		83.6	0	O	ME-SA		
viba_523	K83/79		83.3	0	O	EA-1		

Virus sample name:	PAT/2/2017
Sender reference:	(11) 283479-701
Location of origin:	Jabalya El-Nazlat, Gaza Strip
Country of origin:	Palestinian AT
Date of collection:	08/02/2017
Host species:	cattle
Serotype:	O
Topotype:	EA-3
Lineage:	
Sublineage:	
Sequence length:	633
Ambiguities:	0
Material submitted for sequencing:	BTy1
Harvest date of material:	21/03/2017
Primers:	O-1C244F/EUR-2B52R; O-1C272F/EUR-2B52R
Received for sequencing:	27/03/2017
Created:	28/03/2017
Last updated:	28/03/2017
VIBASys IDs: sample 32338, genome 32339, sequence viba_32340, sequencing info 32341	

Most Closely Related Sequences

sequence	virus name	Host	% Id.	# Ambig.	serotype	topotype	lineage	sublineage
viba_32356	PAT/7/2017	cattle	100.0	0	O	EA-3		
viba_32364	PAT/10/2017	cattle	100.0	0	O	EA-3		
viba_32348	PAT/5/2017	cattle	100.0	0	O	EA-3		
viba_32344	PAT/4/2017	cattle	99.7	0	O	EA-3		
viba_32311	ISR/3/2017	cattle	99.7	0	O	EA-3		
viba_32336	PAT/1/2017	cattle	99.7	0	O	EA-3		
viba_32315	ISR/4/2017	cattle	99.7	0	O	EA-3		
viba_32307	ISR/2/2017	cattle	99.7	0	O	EA-3		
viba_32319	ISR/5/2017	cattle	99.7	0	O	EA-3		
viba_32360	PAT/9/2017	cattle	99.7	0	O	EA-3		

Most Closely Related Prototype Sequences

see http://www.wrlfmd.org/fmd_genotyping/prototypes.htm

sequence	virus name	Host	% Id.	# Ambig.	serotype	topotype	lineage	sublineage
viba_116	SUD/2/86	bovine	88.5	0	O	EA-3		
viba_854	ETH/1/2007	cattle	85.0	0	O	EA-3		
viba_617	IND/53/79	bovine	84.4	0	O	ME-SA		
viba_408	ETH/3/2004	cattle	84.3	0	O	EA-3		
viba_285	UKG/35/2001	porcine	84.3	0	O	ME-SA	PanAsia	
viba_263	TAN/2/2004	bovine	83.9	0	O	EA-2		
viba_85	UGA/3/2002		83.9	0	O	EA-2		
viba_221	MAL/1/98		83.6	0	O	EA-2		
viba_523	K83/79		83.6	0	O	EA-1		
viba_359	Manisa/TUR/69		83.5	0	O	ME-SA		

Virus sample name:	PAT/4/2017
Sender reference:	(15) 283479-703
Location of origin:	Rafah Khirbet Adas, Gaza Strip
Country of origin:	Palestinian AT
Date of collection:	08/02/2017
Host species:	cattle
Serotype:	O
Topotype:	EA-3
Lineage:	
Sublineage:	
Sequence length:	633
Ambiguities:	0
Material submitted for sequencing:	BTy1
Harvest date of material:	21/03/2017
Primers:	O-1C244F/EUR-2B52R; O-1C272F/EUR-2B52R
Received for sequencing:	27/03/2017
Created:	28/03/2017
Last updated:	28/03/2017
VIBASys IDs: sample 32342, genome 32343, sequence viba_32344, sequencing info 32345	

Most Closely Related Sequences

sequence	virus name	Host	% Id.	# Ambig.	serotype	topotype	lineage	sublineage
viba_32311	ISR/3/2017	cattle	100.0	0	O	EA-3		
viba_32336	PAT/1/2017	cattle	100.0	0	O	EA-3		
viba_32315	ISR/4/2017	cattle	100.0	0	O	EA-3		
viba_32307	ISR/2/2017	cattle	100.0	0	O	EA-3		
viba_32319	ISR/5/2017	cattle	100.0	0	O	EA-3		
viba_32360	PAT/9/2017	cattle	100.0	0	O	EA-3		
viba_32327	ISR/7/2017	cattle	100.0	0	O	EA-3		
viba_32303	ISR/1/2017	cattle	100.0	0	O	EA-3		
viba_32331	ISR/8/2017	cattle	100.0	0	O	EA-3		
viba_32323	ISR/6/2017	cattle	100.0	0	O	EA-3		

Most Closely Related Prototype Sequences

see http://www.wrlfmd.org/fmd_genotyping/prototypes.htm

sequence	virus name	Host	% Id.	# Ambig.	serotype	topotype	lineage	sublineage
viba_116	SUD/2/86	bovine	88.2	0	O	EA-3		
viba_854	ETH/1/2007	cattle	84.7	0	O	EA-3		
viba_617	IND/53/79	bovine	84.2	0	O	ME-SA		
viba_285	UKG/35/2001	porcine	84.1	0	O	ME-SA	PanAsia	
viba_408	ETH/3/2004	cattle	84.0	0	O	EA-3		
viba_263	TAN/2/2004	bovine	83.6	0	O	EA-2		
viba_221	MAL/1/98		83.6	0	O	EA-2		
viba_85	UGA/3/2002		83.6	0	O	EA-2		
viba_359	Manisa/TUR/69		83.6	0	O	ME-SA		
viba_523	K83/79		83.3	0	O	EA-1		

Virus sample name:	PAT/5/2017
Sender reference:	(17) 283479-704
Location of origin:	Rafah Tel Al-Sultan, Gaza Strip
Country of origin:	Palestinian AT
Date of collection:	08/02/2017
Host species:	cattle
Serotype:	O
Topotype:	EA-3
Lineage:	
Sublineage:	
Sequence length:	633
Ambiguities:	0
Material submitted for sequencing:	BTy1
Harvest date of material:	21/03/2017
Primers:	O-1C244F/EUR-2B52R; O-1C272F/EUR-2B52R
Received for sequencing:	27/03/2017
Created:	28/03/2017
Last updated:	28/03/2017
VIBASys IDs: sample 32346, genome 32347, sequence viba_32348, sequencing info 32349	

Most Closely Related Sequences

sequence	virus name	Host	% Id.	# Ambig.	serotype	topotype	lineage	sublineage
viba_32356	PAT/7/2017	cattle	100.0	0	O	EA-3		
viba_32340	PAT/2/2017	cattle	100.0	0	O	EA-3		
viba_32364	PAT/10/2017	cattle	100.0	0	O	EA-3		
viba_32344	PAT/4/2017	cattle	99.7	0	O	EA-3		
viba_32311	ISR/3/2017	cattle	99.7	0	O	EA-3		
viba_32336	PAT/1/2017	cattle	99.7	0	O	EA-3		
viba_32315	ISR/4/2017	cattle	99.7	0	O	EA-3		
viba_32307	ISR/2/2017	cattle	99.7	0	O	EA-3		
viba_32319	ISR/5/2017	cattle	99.7	0	O	EA-3		
viba_32360	PAT/9/2017	cattle	99.7	0	O	EA-3		

Most Closely Related Prototype Sequences

see http://www.wrlfmd.org/fmd_genotyping/prototypes.htm

sequence	virus name	Host	% Id.	# Ambig.	serotype	topotype	lineage	sublineage
viba_116	SUD/2/86	bovine	88.5	0	O	EA-3		
viba_854	ETH/1/2007	cattle	85.0	0	O	EA-3		
viba_617	IND/53/79	bovine	84.4	0	O	ME-SA		
viba_408	ETH/3/2004	cattle	84.3	0	O	EA-3		
viba_285	UKG/35/2001	porcine	84.3	0	O	ME-SA	PanAsia	
viba_263	TAN/2/2004	bovine	83.9	0	O	EA-2		
viba_85	UGA/3/2002		83.9	0	O	EA-2		
viba_221	MAL/1/98		83.6	0	O	EA-2		
viba_523	K83/79		83.6	0	O	EA-1		
viba_359	Manisa/TUR/69		83.5	0	O	ME-SA		

Virus sample name:	PAT/6/2017
Sender reference:	(10) 283471-700
Location of origin:	East of Jabalya, Gaza Strip
Country of origin:	Palestinian AT
Date of collection:	10/02/2017
Host species:	cattle
Serotype:	O
Topotype:	EA-3
Lineage:	
Sublineage:	
Sequence length:	633
Ambiguities:	0
Material submitted for sequencing:	BTy1
Harvest date of material:	21/03/2017
Primers:	O-1C244F/EUR-2B52R; O-1C272F/EUR-2B52R
Received for sequencing:	27/03/2017
Created:	28/03/2017
Last updated:	28/03/2017
VIBASys IDs: sample 32350, genome 32351, sequence viba_32352, sequencing info 32353	

Most Closely Related Sequences

sequence	virus name	Host	% Id.	# Ambig.	serotype	topotype	lineage	sublineage
viba_32344	PAT/4/2017	cattle	100.0	0	O	EA-3		
viba_32311	ISR/3/2017	cattle	100.0	0	O	EA-3		
viba_32336	PAT/1/2017	cattle	100.0	0	O	EA-3		
viba_32315	ISR/4/2017	cattle	100.0	0	O	EA-3		
viba_32307	ISR/2/2017	cattle	100.0	0	O	EA-3		
viba_32319	ISR/5/2017	cattle	100.0	0	O	EA-3		
viba_32360	PAT/9/2017	cattle	100.0	0	O	EA-3		
viba_32327	ISR/7/2017	cattle	100.0	0	O	EA-3		
viba_32303	ISR/1/2017	cattle	100.0	0	O	EA-3		
viba_32331	ISR/8/2017	cattle	100.0	0	O	EA-3		

Most Closely Related Prototype Sequences

see http://www.wrlfmd.org/fmd_genotyping/prototypes.htm

sequence	virus name	Host	% Id.	# Ambig.	serotype	topotype	lineage	sublineage
viba_116	SUD/2/86	bovine	88.2	0	O	EA-3		
viba_854	ETH/1/2007	cattle	84.7	0	O	EA-3		
viba_617	IND/53/79	bovine	84.2	0	O	ME-SA		
viba_285	UKG/35/2001	porcine	84.1	0	O	ME-SA	PanAsia	
viba_408	ETH/3/2004	cattle	84.0	0	O	EA-3		
viba_263	TAN/2/2004	bovine	83.6	0	O	EA-2		
viba_221	MAL/1/98		83.6	0	O	EA-2		
viba_85	UGA/3/2002		83.6	0	O	EA-2		
viba_359	Manisa/TUR/69		83.6	0	O	ME-SA		
viba_523	K83/79		83.3	0	O	EA-1		

Virus sample name:	PAT/7/2017
Sender reference:	(12) 283479-701
Location of origin:	Jabalya El-Nazlat, Gaza Strip
Country of origin:	Palestinian AT
Date of collection:	12/02/2017
Host species:	cattle
Serotype:	O
Topotype:	EA-3
Lineage:	
Sublineage:	
Sequence length:	633
Ambiguities:	0
Material submitted for sequencing:	BTy1
Harvest date of material:	21/03/2017
Primers:	O-1C244F/EUR-2B52R; O-1C272F/EUR-2B52R
Received for sequencing:	27/03/2017
Created:	28/03/2017
Last updated:	28/03/2017
VIBASys IDs: sample 32354, genome 32355, sequence viba_32356, sequencing info 32357	

Most Closely Related Sequences

sequence	virus name	Host	% Id.	# Ambig.	serotype	topotype	lineage	sublineage
viba_32340	PAT/2/2017	cattle	100.0	0	O	EA-3		
viba_32364	PAT/10/2017	cattle	100.0	0	O	EA-3		
viba_32348	PAT/5/2017	cattle	100.0	0	O	EA-3		
viba_32344	PAT/4/2017	cattle	99.7	0	O	EA-3		
viba_32311	ISR/3/2017	cattle	99.7	0	O	EA-3		
viba_32336	PAT/1/2017	cattle	99.7	0	O	EA-3		
viba_32315	ISR/4/2017	cattle	99.7	0	O	EA-3		
viba_32307	ISR/2/2017	cattle	99.7	0	O	EA-3		
viba_32319	ISR/5/2017	cattle	99.7	0	O	EA-3		
viba_32360	PAT/9/2017	cattle	99.7	0	O	EA-3		

Most Closely Related Prototype Sequences

see http://www.wrlfmd.org/fmd_genotyping/prototypes.htm

sequence	virus name	Host	% Id.	# Ambig.	serotype	topotype	lineage	sublineage
viba_116	SUD/2/86	bovine	88.5	0	O	EA-3		
viba_854	ETH/1/2007	cattle	85.0	0	O	EA-3		
viba_617	IND/53/79	bovine	84.4	0	O	ME-SA		
viba_408	ETH/3/2004	cattle	84.3	0	O	EA-3		
viba_285	UKG/35/2001	porcine	84.3	0	O	ME-SA	PanAsia	
viba_263	TAN/2/2004	bovine	83.9	0	O	EA-2		
viba_85	UGA/3/2002		83.9	0	O	EA-2		
viba_221	MAL/1/98		83.6	0	O	EA-2		
viba_523	K83/79		83.6	0	O	EA-1		
viba_359	Manisa/TUR/69		83.5	0	O	ME-SA		

Virus sample name:	PAT/9/2017
Sender reference:	(16) 283479-703
Location of origin:	Rafah Khirbet Adas, Gaza Strip
Country of origin:	Palestinian AT
Date of collection:	12/02/2017
Host species:	cattle
Serotype:	O
Topotype:	EA-3
Lineage:	
Sublineage:	
Sequence length:	633
Ambiguities:	0
Material submitted for sequencing:	BTy1
Harvest date of material:	21/03/2017
Primers:	O-1C244F/EUR-2B52R; O-1C272F/EUR-2B52R
Received for sequencing:	27/03/2017
Created:	28/03/2017
Last updated:	28/03/2017
VIBASys IDs: sample 32358, genome 32359, sequence viba_32360, sequencing info 32361	

Most Closely Related Sequences

sequence	virus name	Host	% Id.	# Ambig.	serotype	topotype	lineage	sublineage
viba_32344	PAT/4/2017	cattle	100.0	0	O	EA-3		
viba_32311	ISR/3/2017	cattle	100.0	0	O	EA-3		
viba_32336	PAT/1/2017	cattle	100.0	0	O	EA-3		
viba_32315	ISR/4/2017	cattle	100.0	0	O	EA-3		
viba_32307	ISR/2/2017	cattle	100.0	0	O	EA-3		
viba_32319	ISR/5/2017	cattle	100.0	0	O	EA-3		
viba_32327	ISR/7/2017	cattle	100.0	0	O	EA-3		
viba_32303	ISR/1/2017	cattle	100.0	0	O	EA-3		
viba_32331	ISR/8/2017	cattle	100.0	0	O	EA-3		
viba_32323	ISR/6/2017	cattle	100.0	0	O	EA-3		

Most Closely Related Prototype Sequences

see http://www.wrlfmd.org/fmd_genotyping/prototypes.htm

sequence	virus name	Host	% Id.	# Ambig.	serotype	topotype	lineage	sublineage
viba_116	SUD/2/86	bovine	88.2	0	O	EA-3		
viba_854	ETH/1/2007	cattle	84.7	0	O	EA-3		
viba_617	IND/53/79	bovine	84.2	0	O	ME-SA		
viba_285	UKG/35/2001	porcine	84.1	0	O	ME-SA	PanAsia	
viba_408	ETH/3/2004	cattle	84.0	0	O	EA-3		
viba_263	TAN/2/2004	bovine	83.6	0	O	EA-2		
viba_221	MAL/1/98		83.6	0	O	EA-2		
viba_85	UGA/3/2002		83.6	0	O	EA-2		
viba_359	Manisa/TUR/69		83.6	0	O	ME-SA		
viba_523	K83/79		83.3	0	O	EA-1		

Virus sample name:	PAT/10/2017
Sender reference:	(18) 283479-704
Location of origin:	Rafah Tel Al-Sultan, Gaza Strip
Country of origin:	Palestinian AT
Date of collection:	12/02/2017
Host species:	cattle
Serotype:	O
Topotype:	EA-3
Lineage:	
Sublineage:	
Sequence length:	633
Ambiguities:	0
Material submitted for sequencing:	BTy1
Harvest date of material:	21/03/2017
Primers:	O-1C244F/EUR-2B52R; O-1C272F/EUR-2B52R
Received for sequencing:	27/03/2017
Created:	28/03/2017
Last updated:	28/03/2017
VIBASys IDs: sample 32362, genome 32363, sequence viba_32364, sequencing info 32365	

Most Closely Related Sequences

sequence	virus name	Host	% Id.	# Ambig.	serotype	topotype	lineage	sublineage
viba_32356	PAT/7/2017	cattle	100.0	0	O	EA-3		
viba_32340	PAT/2/2017	cattle	100.0	0	O	EA-3		
viba_32348	PAT/5/2017	cattle	100.0	0	O	EA-3		
viba_32344	PAT/4/2017	cattle	99.7	0	O	EA-3		
viba_32311	ISR/3/2017	cattle	99.7	0	O	EA-3		
viba_32336	PAT/1/2017	cattle	99.7	0	O	EA-3		
viba_32315	ISR/4/2017	cattle	99.7	0	O	EA-3		
viba_32307	ISR/2/2017	cattle	99.7	0	O	EA-3		
viba_32319	ISR/5/2017	cattle	99.7	0	O	EA-3		
viba_32360	PAT/9/2017	cattle	99.7	0	O	EA-3		

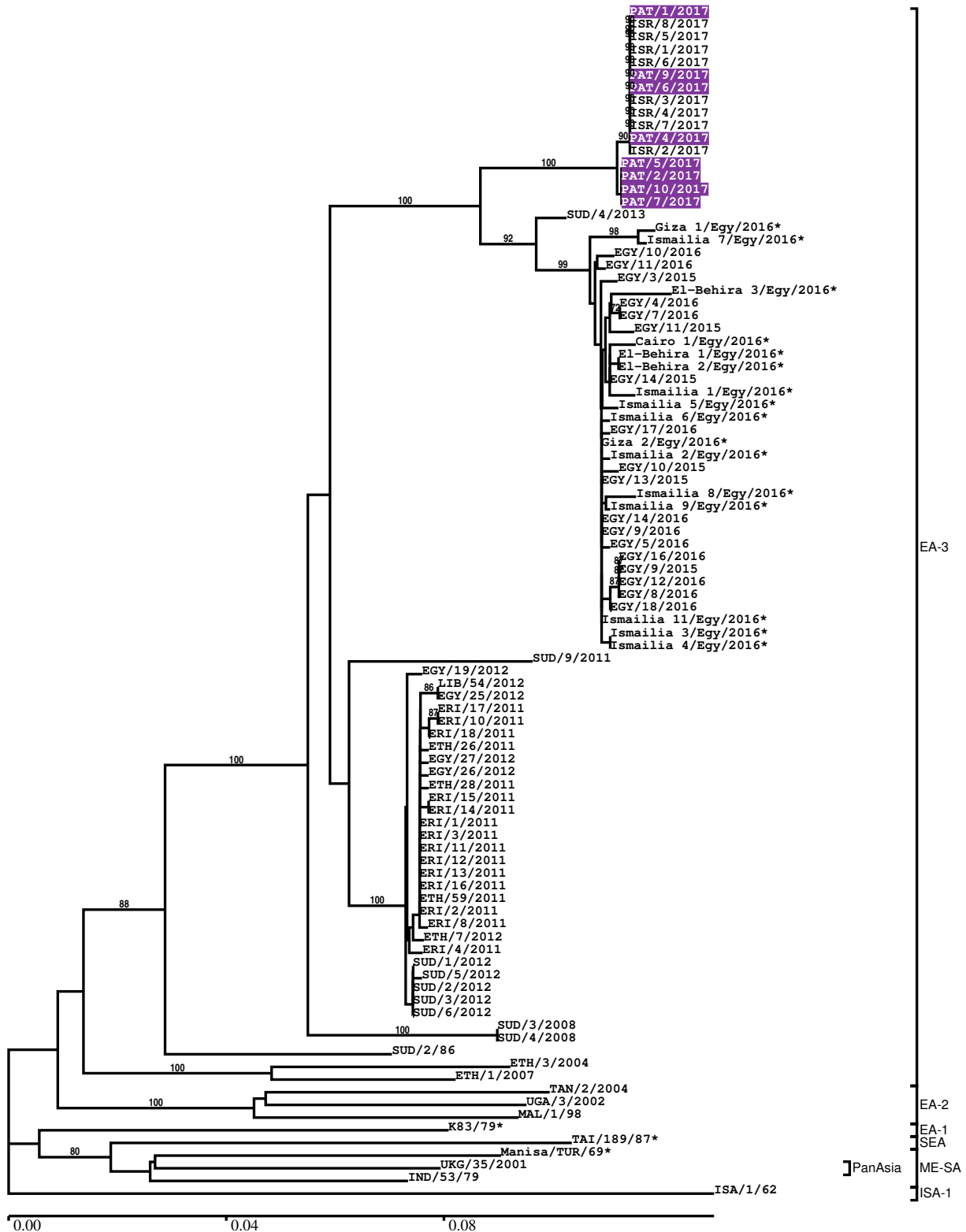
Most Closely Related Prototype Sequences

see http://www.wrlfmd.org/fmd_genotyping/prototypes.htm

sequence	virus name	Host	% Id.	# Ambig.	serotype	topotype	lineage	sublineage
viba_116	SUD/2/86	bovine	88.5	0	O	EA-3		
viba_854	ETH/1/2007	cattle	85.0	0	O	EA-3		
viba_617	IND/53/79	bovine	84.4	0	O	ME-SA		
viba_408	ETH/3/2004	cattle	84.3	0	O	EA-3		
viba_285	UKG/35/2001	porcine	84.3	0	O	ME-SA	PanAsia	
viba_263	TAN/2/2004	bovine	83.9	0	O	EA-2		
viba_85	UGA/3/2002		83.9	0	O	EA-2		
viba_221	MAL/1/98		83.6	0	O	EA-2		
viba_523	K83/79		83.6	0	O	EA-1		
viba_359	Manisa/TUR/69		83.5	0	O	ME-SA		

Report on FMDV O in Palestinian AT in 2017

Batch: WRLFMD/2017/00005



*, not a WRLFMD Reference Number

Analysis Parameters

VP1 subsequence extractor: vp1_O
 Query sequence set: WRLFMD/2017/00005-Palestinian AT-O (8 sequences)
 Sequence database set: allseqs_O (3347 sequences)
 Prototype sequence set: !prototypes_O (47 sequences)
 Number of related sequences reported: 10
 Minimal VP1 subsequence match length: 600
 Sequence alignment method: muscle (default parameters)
 Sequence alignment length: 636
 Phylogeny reconstruction method: fdnadist, fneighbor
 Number of bootstrap samples: 1000
 Random seed for bootstrapping: 1
 Displaying bootstrap values above: 70.0%
 Number of sequences in tree capped at: 100
 Number of prototype sequences in tree: 10
 VIBASys version: master-1.1.0-17-gf69a4d1

Sequences in the Phylogenetic Tree

All sequences in the tree are in taxonomic group FMDV/O

label	accession	host(s)	lab	country	taxonomic information
PAT/1/2017	n/a	cattle	WRLFMD	Palestinian AT	EA-3
ISR/8/2017	n/a	cattle	WRLFMD	Israel	EA-3
ISR/5/2017	n/a	cattle	WRLFMD	Israel	EA-3
ISR/1/2017	n/a	cattle	WRLFMD	Israel	EA-3
ISR/6/2017	n/a	cattle	WRLFMD	Israel	EA-3
PAT/9/2017	n/a	cattle	WRLFMD	Palestinian AT	EA-3
PAT/6/2017	n/a	cattle	WRLFMD	Palestinian AT	EA-3
ISR/3/2017	n/a	cattle	WRLFMD	Israel	EA-3
ISR/4/2017	n/a	cattle	WRLFMD	Israel	EA-3
ISR/7/2017	n/a	cattle	WRLFMD	Israel	EA-3
PAT/4/2017	n/a	cattle	WRLFMD	Palestinian AT	EA-3
ISR/2/2017	n/a	cattle	WRLFMD	Israel	EA-3
PAT/5/2017	n/a	cattle	WRLFMD	Palestinian AT	EA-3
PAT/2/2017	n/a	cattle	WRLFMD	Palestinian AT	EA-3
PAT/10/2017	n/a	cattle	WRLFMD	Palestinian AT	EA-3
PAT/7/2017	n/a	cattle	WRLFMD	Palestinian AT	EA-3
SUD/4/2013	n/a	cattle	WRLFMD	Sudan	EA-3
Giza 1/Egy/2016*	KX447131	cattle	Suez Canal Univ	Egypt	EA-3
Ismailia 7/Egy/2016*	KX447133	cattle	Suez Canal Univ	Egypt	EA-3
EGY/10/2016	n/a	cattle	WRLFMD	Egypt	EA-3
EGY/11/2016	n/a	cattle	WRLFMD	Egypt	EA-3
EGY/3/2015	n/a	cattle	WRLFMD	Egypt	EA-3
El-Behira 3/Egy/2016*	KX447123	cattle	Suez Canal Univ	Egypt	EA-3
EGY/4/2016	n/a	cattle	WRLFMD	Egypt	EA-3
EGY/7/2016	n/a	water buffalo	WRLFMD	Egypt	EA-3
EGY/11/2015	n/a	water buffalo	WRLFMD	Egypt	EA-3
Cairo 1/Egy/2016*	KX447130	cattle	Suez Canal Univ	Egypt	EA-3
El-Behira 1/Egy/2016*	KX447121	cattle	Suez Canal Univ	Egypt	EA-3
El-Behira 2/Egy/2016*	KX447122	cattle	Suez Canal Univ	Egypt	EA-3
EGY/14/2015	n/a	cattle	WRLFMD	Egypt	EA-3

continued on next page

label	accession	host(s)	lab	country	taxonomic information
Ismailia 1/Egy/2016*	KX447124	cattle	Suez Canal Univ	Egypt	EA-3
Ismailia 5/Egy/2016*	KX447128	cattle	Suez Canal Univ	Egypt	EA-3
Ismailia 6/Egy/2016*	KX447129	cattle	Suez Canal Univ	Egypt	EA-3
EGY/17/2016	n/a	cattle	WRLFMD	Egypt	EA-3
Giza 2/Egy/2016*	KX447132	cattle	Suez Canal Univ	Egypt	EA-3
Ismailia 2/Egy/2016*	KX447125	cattle	Suez Canal Univ	Egypt	EA-3
EGY/10/2015	n/a	cattle	WRLFMD	Egypt	EA-3
EGY/13/2015	n/a	cattle	WRLFMD	Egypt	EA-3
Ismailia 8/Egy/2016*	KX447134	cattle	Suez Canal Univ	Egypt	EA-3
Ismailia 9/Egy/2016*	KX447135	cattle	Suez Canal Univ	Egypt	EA-3
EGY/14/2016	n/a	cattle	WRLFMD	Egypt	EA-3
EGY/9/2016	n/a	cattle	WRLFMD	Egypt	EA-3
EGY/5/2016	n/a	cattle	WRLFMD	Egypt	EA-3
EGY/16/2016	n/a	cattle	WRLFMD	Egypt	EA-3
EGY/9/2015	n/a	cattle	WRLFMD	Egypt	EA-3
EGY/12/2016	n/a	cattle	WRLFMD	Egypt	EA-3
EGY/8/2016	n/a	cattle	WRLFMD	Egypt	EA-3
EGY/18/2016	n/a	cattle	WRLFMD	Egypt	EA-3
Ismailia 11/Egy/2016*	KX447138	cattle	Suez Canal Univ	Egypt	EA-3
Ismailia 3/Egy/2016*	KX447126	cattle	Suez Canal Univ	Egypt	EA-3
Ismailia 4/Egy/2016*	KX447127	cattle	Suez Canal Univ	Egypt	EA-3
SUD/9/2011	n/a	cattle	WRLFMD	Sudan	EA-3
EGY/19/2012	n/a	cattle	WRLFMD	Egypt	EA-3
LIB/54/2012	n/a	goats	WRLFMD	Libya	EA-3
EGY/25/2012	n/a	sheep	WRLFMD	Egypt	EA-3
ERI/17/2011	n/a	cattle	WRLFMD	Eritrea	EA-3
ERI/10/2011	n/a	porcine	WRLFMD	Eritrea	EA-3
ERI/18/2011	n/a	cattle	WRLFMD	Eritrea	EA-3
ETH/26/2011	n/a	cattle	WRLFMD	Ethiopia	EA-3
EGY/27/2012	n/a	cattle	WRLFMD	Egypt	EA-3
EGY/26/2012	n/a	sheep	WRLFMD	Egypt	EA-3
ETH/28/2011	n/a	cattle	WRLFMD	Ethiopia	EA-3
ERI/15/2011	n/a	porcine	WRLFMD	Eritrea	EA-3
ERI/14/2011	n/a	porcine	WRLFMD	Eritrea	EA-3
ERI/1/2011	n/a	cattle	WRLFMD	Eritrea	EA-3
ERI/3/2011	n/a	cattle	WRLFMD	Eritrea	EA-3
ERI/11/2011	n/a	porcine	WRLFMD	Eritrea	EA-3
ERI/12/2011	n/a	porcine	WRLFMD	Eritrea	EA-3
ERI/13/2011	n/a	porcine	WRLFMD	Eritrea	EA-3
ERI/16/2011	n/a	porcine	WRLFMD	Eritrea	EA-3
ETH/59/2011	n/a	cattle	WRLFMD	Ethiopia	EA-3
ERI/2/2011	n/a	cattle	WRLFMD	Eritrea	EA-3
ERI/8/2011	n/a	porcine	WRLFMD	Eritrea	EA-3
ETH/7/2012	n/a	cattle	WRLFMD	Ethiopia	EA-3
ERI/4/2011	n/a	cattle	WRLFMD	Eritrea	EA-3
SUD/1/2012	n/a	cattle	WRLFMD	Sudan	EA-3
SUD/5/2012	n/a	cattle	WRLFMD	Sudan	EA-3
SUD/2/2012	n/a	cattle	WRLFMD	Sudan	EA-3
SUD/3/2012	n/a	cattle	WRLFMD	Sudan	EA-3
SUD/6/2012	n/a	cattle	WRLFMD	Sudan	EA-3
SUD/3/2008	GU566059	cattle	WRLFMD	Sudan	EA-3
SUD/4/2008	GU566060	cattle	WRLFMD	Sudan	EA-3
SUD/2/86	DQ165075	bovine	WRLFMD	Sudan	EA-3
ETH/3/2004	FJ798109	cattle	WRLFMD	Ethiopia	EA-3
ETH/1/2007	FJ798137	cattle	WRLFMD	Ethiopia	EA-3
TAN/2/2004	KF561679	bovine	WRLFMD	Tanzania	EA-2
UGA/3/2002	DQ165077	n/a	WRLFMD	Uganda	EA-2

continued on next page

label	accession	host(s)	lab	country	taxonomic information
MAL/1/98	DQ165074	n/a	WRLFMD	Malawi	EA-2
K83/79*	AJ303511	n/a	WRLFMD	Kenya	EA-1
TAI/189/87*	KY091288	bovine	TRRL	Thailand	SEA
Manisa/TUR/69*	AY593823	n/a	PIADC	Turkey	ME-SA
UKG/35/2001	AJ539141	porcine	PIADC	United Kingdom	ME-SA/PanAsia
IND/53/79	AF292107	bovine	PD-FMD	India	ME-SA
ISA/1/62	AJ303500	n/a	WRLFMD	Indonesia	ISA-1

*, not a WRLFMD Reference Number

n/a, not available