

FAO World Reference Laboratory for Foot-and-Mouth Disease (WRLFMD)

Genotyping Report

FMDV serotype: O
Country: Turkey
Year: 2016, 2017, 2018, 2019
Batch: WRLFMD/2019/00023
No. of sequences: 20
Report date: 23rd May 2019
Report generated by: Nick Knowles
Report checked by: Jemma Wadsworth



Copyright © 2019 The Pirbright Institute, Ash Road, Pirbright, Woking GU24 0NF, United Kingdom.

www: <http://www.wrlfmd.org/>

email: reporting@pirbright.ac.uk

The contents of this report should not be reproduced without permission.

Virus sample name:	TUR/2/2016
Sender reference:	2017-9 (2)
Location of origin:	Kanberli, Altinozu, Hatay
Country of origin:	Turkey
Date of collection:	30/12/2016
Host species:	cattle
Serotype:	O
Topotype:	ME-SA
Lineage:	PanAsia-2
Sublineage:	QOM-15
Sequence length:	633
Ambiguities:	0
Material submitted for sequencing:	BTy1
Harvest date of material:	26/04/2019
Primers:	FMD-3161F/FMD-4303R
Received for sequencing:	21/05/2019
Created:	23/05/2019
Last updated:	23/05/2019

VIBASys IDs: sample 41767, genome 41768, sequence viba_41769, sequencing info 41770

Most Closely Related Sequences

sequence	virus name	Host	% Id.	# Ambig.	serotype	topotype	lineage	sublineage
viba_41781	TUR/5/2017	cattle	99.8	0	O	ME-SA	PanAsia-2	QOM-15
viba_41777	TUR/4/2017	cattle	99.5	0	O	ME-SA	PanAsia-2	QOM-15
viba_23736	KUW/1/2016	cattle	99.2	0	O	ME-SA	PanAsia-2	QOM-15
viba_23740	KUW/2/2016	cattle	99.2	0	O	ME-SA	PanAsia-2	QOM-15
viba_27677	IRN/13/2016	cattle	99.2	0	O	ME-SA	PanAsia-2	QOM-15
viba_27681	IRN/15/2016	sheep	99.2	0	O	ME-SA	PanAsia-2	QOM-15
viba_27685	IRN/16/2016	sheep	99.2	0	O	ME-SA	PanAsia-2	QOM-15
viba_23744	KUW/4/2016	cattle	99.2	0	O	ME-SA	PanAsia-2	QOM-15
viba_27669	IRN/9/2016	dog	99.2	0	O	ME-SA	PanAsia-2	QOM-15
viba_27701	IRN/21/2016	cattle	99.1	0	O	ME-SA	PanAsia-2	QOM-15

Most Closely Related Prototype Sequences

see http://www.wrlfmd.org/fmd_genotyping/prototypes.htm

sequence	virus name	Host	% Id.	# Ambig.	serotype	topotype	lineage	sublineage
viba_860	IRN/6/2015	cattle	98.6	0	O	ME-SA	PanAsia-2	QOM-15
viba_666	IRN/18/2010	cattle	94.5	0	O	ME-SA	PanAsia-2	BAL-09
viba_766	IRN/31/2009	cattle	92.7	0	O	ME-SA	PanAsia-2	FAR-09
viba_650	IRN/8/2005	ovine	92.1	0	O	ME-SA	PanAsia-2	
viba_491	TUR/257/2008		91.5	0	O	ME-SA	PanAsia-2	TER-08
viba_719	IRN/88/2009		91.5	0	O	ME-SA	PanAsia-2	ANT-10
viba_850	NEP/1/2015	cattle	91.3	1	O	ME-SA	PanAsia-2	KAT-15
viba_354	PAK/16/2010	cattle	91.0	0	O	ME-SA	PanAsia-2	PUN-10
viba_505	TUR/264/2009		90.5	0	O	ME-SA	PanAsia-2	SAN-09
viba_285	UKG/35/2001	porcine	90.0	0	O	ME-SA	PanAsia	

Virus sample name:	TUR/2/2017
Sender reference:	2017-77 (40)
Location of origin:	Karacaviran, Develi, Kayseri
Country of origin:	Turkey
Date of collection:	30/01/2017
Host species:	cattle
Serotype:	O
Topotype:	ME-SA
Lineage:	PanAsia-2
Sublineage:	QOM-15
Sequence length:	633
Ambiguities:	0
Material submitted for sequencing:	BTy1
Harvest date of material:	26/04/2019
Primers:	FMD-3161F/FMD-4303R
Received for sequencing:	21/05/2019
Created:	23/05/2019
Last updated:	23/05/2019
VIBASys IDs: sample 41771, genome 41772, sequence viba_41773, sequencing info 41774	

Most Closely Related Sequences

sequence	virus name	Host	% Id.	# Ambig.	serotype	topotype	lineage	sublineage
viba_27721	IRN/29/2016	sheep	98.7	0	O	ME-SA	PanAsia-2	QOM-15
viba_23736	KUW/1/2016	cattle	98.6	0	O	ME-SA	PanAsia-2	QOM-15
viba_23740	KUW/2/2016	cattle	98.6	0	O	ME-SA	PanAsia-2	QOM-15
viba_27677	IRN/13/2016	cattle	98.6	0	O	ME-SA	PanAsia-2	QOM-15
viba_27681	IRN/15/2016	sheep	98.6	0	O	ME-SA	PanAsia-2	QOM-15
viba_27685	IRN/16/2016	sheep	98.6	0	O	ME-SA	PanAsia-2	QOM-15
viba_23744	KUW/4/2016	cattle	98.6	0	O	ME-SA	PanAsia-2	QOM-15
viba_27713	IRN/27/2016	sheep	98.6	0	O	ME-SA	PanAsia-2	QOM-15
viba_27669	IRN/9/2016	dog	98.6	0	O	ME-SA	PanAsia-2	QOM-15
viba_27701	IRN/21/2016	cattle	98.4	0	O	ME-SA	PanAsia-2	QOM-15

Most Closely Related Prototype Sequences

see http://www.wrlfmd.org/fmd_genotyping/prototypes.htm

sequence	virus name	Host	% Id.	# Ambig.	serotype	topotype	lineage	sublineage
viba_860	IRN/6/2015	cattle	97.9	0	O	ME-SA	PanAsia-2	QOM-15
viba_666	IRN/18/2010	cattle	94.2	0	O	ME-SA	PanAsia-2	BAL-09
viba_766	IRN/31/2009	cattle	93.0	0	O	ME-SA	PanAsia-2	FAR-09
viba_650	IRN/8/2005	ovine	91.8	0	O	ME-SA	PanAsia-2	
viba_719	IRN/88/2009		91.6	0	O	ME-SA	PanAsia-2	ANT-10
viba_491	TUR/257/2008		91.5	0	O	ME-SA	PanAsia-2	TER-08
viba_354	PAK/16/2010	cattle	90.7	0	O	ME-SA	PanAsia-2	PUN-10
viba_850	NEP/1/2015	cattle	90.7	1	O	ME-SA	PanAsia-2	KAT-15
viba_505	TUR/264/2009		90.5	0	O	ME-SA	PanAsia-2	SAN-09
viba_285	UKG/35/2001	porcine	90.4	0	O	ME-SA	PanAsia	

Virus sample name:	TUR/4/2017
Sender reference:	2017-156 (6)
Location of origin:	Keremli, Merkez, Kastamonu
Country of origin:	Turkey
Date of collection:	01/03/2017
Host species:	cattle
Serotype:	O
Topotype:	ME-SA
Lineage:	PanAsia-2
Sublineage:	QOM-15
Sequence length:	633
Ambiguities:	0
Material submitted for sequencing:	BTy1
Harvest date of material:	27/04/2019
Primers:	FMD-3161F/FMD-4303R
Received for sequencing:	21/05/2019
Created:	23/05/2019
Last updated:	23/05/2019
VIBASys IDs: sample 41775, genome 41776, sequence viba_41777, sequencing info 41778	

Most Closely Related Sequences

sequence	virus name	Host	% Id.	# Ambig.	serotype	topotype	lineage	sublineage
viba_41781	TUR/5/2017	cattle	99.7	0	O	ME-SA	PanAsia-2	QOM-15
viba_41769	TUR/2/2016	cattle	99.5	0	O	ME-SA	PanAsia-2	QOM-15
viba_23736	KUW/1/2016	cattle	99.1	0	O	ME-SA	PanAsia-2	QOM-15
viba_23740	KUW/2/2016	cattle	99.1	0	O	ME-SA	PanAsia-2	QOM-15
viba_27677	IRN/13/2016	cattle	99.1	0	O	ME-SA	PanAsia-2	QOM-15
viba_27681	IRN/15/2016	sheep	99.1	0	O	ME-SA	PanAsia-2	QOM-15
viba_27685	IRN/16/2016	sheep	99.1	0	O	ME-SA	PanAsia-2	QOM-15
viba_23744	KUW/4/2016	cattle	99.1	0	O	ME-SA	PanAsia-2	QOM-15
viba_27669	IRN/9/2016	dog	99.1	0	O	ME-SA	PanAsia-2	QOM-15
viba_27701	IRN/21/2016	cattle	98.9	0	O	ME-SA	PanAsia-2	QOM-15

Most Closely Related Prototype Sequences

see http://www.wrlfmd.org/fmd_genotyping/prototypes.htm

sequence	virus name	Host	% Id.	# Ambig.	serotype	topotype	lineage	sublineage
viba_860	IRN/6/2015	cattle	98.4	0	O	ME-SA	PanAsia-2	QOM-15
viba_666	IRN/18/2010	cattle	94.6	0	O	ME-SA	PanAsia-2	BAL-09
viba_766	IRN/31/2009	cattle	92.9	0	O	ME-SA	PanAsia-2	FAR-09
viba_650	IRN/8/2005	ovine	92.3	0	O	ME-SA	PanAsia-2	
viba_491	TUR/257/2008		91.6	0	O	ME-SA	PanAsia-2	TER-08
viba_719	IRN/88/2009		91.6	0	O	ME-SA	PanAsia-2	ANT-10
viba_850	NEP/1/2015	cattle	91.5	1	O	ME-SA	PanAsia-2	KAT-15
viba_354	PAK/16/2010	cattle	91.2	0	O	ME-SA	PanAsia-2	PUN-10
viba_505	TUR/264/2009		90.7	0	O	ME-SA	PanAsia-2	SAN-09
viba_285	UKG/35/2001	porcine	90.5	0	O	ME-SA	PanAsia	

Virus sample name:	TUR/5/2017
Sender reference:	2017-135 (5)
Location of origin:	Koyunlu, Gole, Ardahan
Country of origin:	Turkey
Date of collection:	16/07/2017
Host species:	cattle
Serotype:	O
Topotype:	ME-SA
Lineage:	PanAsia-2
Sublineage:	QOM-15
Sequence length:	633
Ambiguities:	0
Material submitted for sequencing:	BTy1
Harvest date of material:	27/04/2019
Primers:	FMD-3161F/FMD-4303R
Received for sequencing:	21/05/2019
Created:	23/05/2019
Last updated:	23/05/2019
VIBASys IDs: sample 41779, genome 41780, sequence viba_41781, sequencing info 41782	

Most Closely Related Sequences

sequence	virus name	Host	% Id.	# Ambig.	serotype	topotype	lineage	sublineage
viba_41769	TUR/2/2016	cattle	99.8	0	O	ME-SA	PanAsia-2	QOM-15
viba_41777	TUR/4/2017	cattle	99.7	0	O	ME-SA	PanAsia-2	QOM-15
viba_23736	KUW/1/2016	cattle	99.4	0	O	ME-SA	PanAsia-2	QOM-15
viba_23740	KUW/2/2016	cattle	99.4	0	O	ME-SA	PanAsia-2	QOM-15
viba_27677	IRN/13/2016	cattle	99.4	0	O	ME-SA	PanAsia-2	QOM-15
viba_27681	IRN/15/2016	sheep	99.4	0	O	ME-SA	PanAsia-2	QOM-15
viba_27685	IRN/16/2016	sheep	99.4	0	O	ME-SA	PanAsia-2	QOM-15
viba_23744	KUW/4/2016	cattle	99.4	0	O	ME-SA	PanAsia-2	QOM-15
viba_27669	IRN/9/2016	dog	99.4	0	O	ME-SA	PanAsia-2	QOM-15
viba_27701	IRN/21/2016	cattle	99.2	0	O	ME-SA	PanAsia-2	QOM-15

Most Closely Related Prototype Sequences

see http://www.wrlfmd.org/fmd_genotyping/prototypes.htm

sequence	virus name	Host	% Id.	# Ambig.	serotype	topotype	lineage	sublineage
viba_860	IRN/6/2015	cattle	98.7	0	O	ME-SA	PanAsia-2	QOM-15
viba_666	IRN/18/2010	cattle	94.6	0	O	ME-SA	PanAsia-2	BAL-09
viba_766	IRN/31/2009	cattle	92.9	0	O	ME-SA	PanAsia-2	FAR-09
viba_650	IRN/8/2005	ovine	92.3	0	O	ME-SA	PanAsia-2	
viba_491	TUR/257/2008		91.6	0	O	ME-SA	PanAsia-2	TER-08
viba_719	IRN/88/2009		91.6	0	O	ME-SA	PanAsia-2	ANT-10
viba_850	NEP/1/2015	cattle	91.5	1	O	ME-SA	PanAsia-2	KAT-15
viba_354	PAK/16/2010	cattle	91.2	0	O	ME-SA	PanAsia-2	PUN-10
viba_505	TUR/264/2009		90.7	0	O	ME-SA	PanAsia-2	SAN-09
viba_285	UKG/35/2001	porcine	90.2	0	O	ME-SA	PanAsia	

Virus sample name:	TUR/7/2017
Sender reference:	2017-346 (28)
Location of origin:	Badilli, Tuzluca, Igdir
Country of origin:	Turkey
Date of collection:	20/09/2017
Host species:	cattle
Serotype:	O
Topotype:	ME-SA
Lineage:	PanAsia-2
Sublineage:	QOM-15
Sequence length:	633
Ambiguities:	0
Material submitted for sequencing:	BTy1
Harvest date of material:	27/04/2019
Primers:	FMD-3161F/FMD-4303R
Received for sequencing:	21/05/2019
Created:	23/05/2019
Last updated:	23/05/2019
VIBASys IDs: sample 41783, genome 41784, sequence viba_41785, sequencing info 41786	

Most Closely Related Sequences

sequence	virus name	Host	% Id.	# Ambig.	serotype	topotype	lineage	sublineage
viba_34055	TUR/276/2017.519		99.4	1	O	ME-SA	PanAsia-2	QOM-15
viba_41841	TUR/4/2019	cattle	97.8	0	O	ME-SA	PanAsia-2	QOM-15
viba_41837	TUR/3/2019	cattle	97.8	0	O	ME-SA	PanAsia-2	QOM-15
viba_23736	KUW/1/2016	cattle	97.6	0	O	ME-SA	PanAsia-2	QOM-15
viba_23740	KUW/2/2016	cattle	97.6	0	O	ME-SA	PanAsia-2	QOM-15
viba_27677	IRN/13/2016	cattle	97.6	0	O	ME-SA	PanAsia-2	QOM-15
viba_27681	IRN/15/2016	sheep	97.6	0	O	ME-SA	PanAsia-2	QOM-15
viba_27685	IRN/16/2016	sheep	97.6	0	O	ME-SA	PanAsia-2	QOM-15
viba_23744	KUW/4/2016	cattle	97.6	0	O	ME-SA	PanAsia-2	QOM-15
viba_27669	IRN/9/2016	dog	97.6	0	O	ME-SA	PanAsia-2	QOM-15

Most Closely Related Prototype Sequences

see http://www.wrlfmd.org/fmd_genotyping/prototypes.htm

sequence	virus name	Host	% Id.	# Ambig.	serotype	topotype	lineage	sublineage
viba_860	IRN/6/2015	cattle	97.5	0	O	ME-SA	PanAsia-2	QOM-15
viba_666	IRN/18/2010	cattle	94.3	0	O	ME-SA	PanAsia-2	BAL-09
viba_766	IRN/31/2009	cattle	93.5	0	O	ME-SA	PanAsia-2	FAR-09
viba_650	IRN/8/2005	ovine	92.4	0	O	ME-SA	PanAsia-2	
viba_719	IRN/88/2009		92.1	0	O	ME-SA	PanAsia-2	ANT-10
viba_491	TUR/257/2008		91.9	0	O	ME-SA	PanAsia-2	TER-08
viba_354	PAK/16/2010	cattle	91.8	0	O	ME-SA	PanAsia-2	PUN-10
viba_850	NEP/1/2015	cattle	91.2	1	O	ME-SA	PanAsia-2	KAT-15
viba_505	TUR/264/2009		91.0	0	O	ME-SA	PanAsia-2	SAN-09
viba_285	UKG/35/2001	porcine	91.0	0	O	ME-SA	PanAsia	

Virus sample name:	TUR/17/2017
Sender reference:	2017-476 (11)
Location of origin:	Gulnar, Gulnar, Mersin
Country of origin:	Turkey
Date of collection:	21/12/2017
Host species:	cattle
Serotype:	O
Topotype:	ME-SA
Lineage:	PanAsia-2
Sublineage:	QOM-15
Sequence length:	633
Ambiguities:	0
Material submitted for sequencing:	BTy1
Harvest date of material:	28/04/2019
Primers:	FMD-3161F/FMD-4303R
Received for sequencing:	21/05/2019
Created:	23/05/2019
Last updated:	23/05/2019
VIBASys IDs: sample 41787, genome 41788, sequence viba_41789, sequencing info 41790	

Most Closely Related Sequences

sequence	virus name	Host	% Id.	# Ambig.	serotype	topotype	lineage	sublineage
viba_41793	TUR/1/2018	cattle	99.5	0	O	ME-SA	PanAsia-2	QOM-15
viba_41813	TUR/10/2018	cattle	99.5	0	O	ME-SA	PanAsia-2	QOM-15
viba_41809	TUR/9/2018	cattle	99.5	0	O	ME-SA	PanAsia-2	QOM-15
viba_37492	TUR/65/2018		99.5	0	O	ME-SA	PanAsia-2	QOM-15
viba_41801	TUR/5/2018	cattle	99.5	0	O	ME-SA	PanAsia-2	QOM-15
viba_39896	ISR/33/2018	cattle	99.2	0	O	ME-SA	PanAsia-2	QOM-15
viba_36400	ISR/1/2018	cattle	99.2	0	O	ME-SA	PanAsia-2	QOM-15
viba_39852	ISR/15/2018	gazelle	99.2	0	O	ME-SA	PanAsia-2	QOM-15
viba_36412	ISR/4/2018	cattle	99.2	0	O	ME-SA	PanAsia-2	QOM-15
viba_39868	ISR/26/2018	cattle	99.2	0	O	ME-SA	PanAsia-2	QOM-15

Most Closely Related Prototype Sequences

see http://www.wrlfmd.org/fmd_genotyping/prototypes.htm

sequence	virus name	Host	% Id.	# Ambig.	serotype	topotype	lineage	sublineage
viba_860	IRN/6/2015	cattle	97.8	0	O	ME-SA	PanAsia-2	QOM-15
viba_666	IRN/18/2010	cattle	94.3	0	O	ME-SA	PanAsia-2	BAL-09
viba_766	IRN/31/2009	cattle	92.9	0	O	ME-SA	PanAsia-2	FAR-09
viba_650	IRN/8/2005	ovine	92.6	0	O	ME-SA	PanAsia-2	
viba_719	IRN/88/2009		92.1	0	O	ME-SA	PanAsia-2	ANT-10
viba_491	TUR/257/2008		91.6	0	O	ME-SA	PanAsia-2	TER-08
viba_850	NEP/1/2015	cattle	91.5	1	O	ME-SA	PanAsia-2	KAT-15
viba_354	PAK/16/2010	cattle	90.8	0	O	ME-SA	PanAsia-2	PUN-10
viba_505	TUR/264/2009		90.7	0	O	ME-SA	PanAsia-2	SAN-09
viba_285	UKG/35/2001	porcine	90.2	0	O	ME-SA	PanAsia	

Virus sample name:	TUR/1/2018
Sender reference:	2018-372 (24)
Location of origin:	Bolatli, Tarsus, Mersin
Country of origin:	Turkey
Date of collection:	02/05/2018
Host species:	cattle
Serotype:	O
Topotype:	ME-SA
Lineage:	PanAsia-2
Sublineage:	QOM-15
Sequence length:	633
Ambiguities:	0
Material submitted for sequencing:	BTy1
Harvest date of material:	27/04/2019
Primers:	FMD-3161F/FMD-4303R
Received for sequencing:	21/05/2019
Created:	23/05/2019
Last updated:	23/05/2019
VIBASys IDs: sample 41791, genome 41792, sequence viba_41793, sequencing info 41794	

Most Closely Related Sequences

sequence	virus name	Host	% Id.	# Ambig.	serotype	topotype	lineage	sublineage
viba_41813	TUR/10/2018	cattle	99.7	0	O	ME-SA	PanAsia-2	QOM-15
viba_41809	TUR/9/2018	cattle	99.7	0	O	ME-SA	PanAsia-2	QOM-15
viba_41801	TUR/5/2018	cattle	99.7	0	O	ME-SA	PanAsia-2	QOM-15
viba_41789	TUR/17/2017	cattle	99.5	0	O	ME-SA	PanAsia-2	QOM-15
viba_39896	ISR/33/2018	cattle	99.4	0	O	ME-SA	PanAsia-2	QOM-15
viba_36400	ISR/1/2018	cattle	99.4	0	O	ME-SA	PanAsia-2	QOM-15
viba_39852	ISR/15/2018	gazelle	99.4	0	O	ME-SA	PanAsia-2	QOM-15
viba_36412	ISR/4/2018	cattle	99.4	0	O	ME-SA	PanAsia-2	QOM-15
viba_39868	ISR/26/2018	cattle	99.4	0	O	ME-SA	PanAsia-2	QOM-15
viba_36251	Gazit/317556-110/ISR/2018	cattle	99.4	0	O	ME-SA	PanAsia-2	QOM-15

Most Closely Related Prototype Sequences

see http://www.wrlfmd.org/fmd_genotyping/prototypes.htm

sequence	virus name	Host	% Id.	# Ambig.	serotype	topotype	lineage	sublineage
viba_860	IRN/6/2015	cattle	97.6	0	O	ME-SA	PanAsia-2	QOM-15
viba_666	IRN/18/2010	cattle	94.2	0	O	ME-SA	PanAsia-2	BAL-09
viba_766	IRN/31/2009	cattle	92.7	0	O	ME-SA	PanAsia-2	FAR-09
viba_650	IRN/8/2005	ovine	92.4	0	O	ME-SA	PanAsia-2	
viba_719	IRN/88/2009		91.8	0	O	ME-SA	PanAsia-2	ANT-10
viba_491	TUR/257/2008		91.5	0	O	ME-SA	PanAsia-2	TER-08
viba_850	NEP/1/2015	cattle	91.3	1	O	ME-SA	PanAsia-2	KAT-15
viba_354	PAK/16/2010	cattle	90.7	0	O	ME-SA	PanAsia-2	PUN-10
viba_505	TUR/264/2009		90.5	0	O	ME-SA	PanAsia-2	SAN-09
viba_285	UKG/35/2001	porcine	90.0	0	O	ME-SA	PanAsia	

Virus sample name:	TUR/2/2018
Sender reference:	2018/381 (26)
Location of origin:	Mihaliccik, Yesilyurt, Eskisehir
Country of origin:	Turkey
Date of collection:	09/05/2018
Host species:	cattle
Serotype:	O
Topotype:	ME-SA
Lineage:	PanAsia-2
Sublineage:	QOM-15
Sequence length:	633
Ambiguities:	0
Material submitted for sequencing:	BTy1
Harvest date of material:	30/04/2019
Primers:	FMD-3161F/FMD-4303R
Received for sequencing:	21/05/2019
Created:	23/05/2019
Last updated:	23/05/2019
VIBASys IDs: sample 41795, genome 41796, sequence viba_41797, sequencing info 41798	

Most Closely Related Sequences

sequence	virus name	Host	% Id.	# Ambig.	serotype	topotype	lineage	sublineage
viba_37492	TUR/65/2018		99.4	0	O	ME-SA	PanAsia-2	QOM-15
viba_41789	TUR/17/2017	cattle	98.9	0	O	ME-SA	PanAsia-2	QOM-15
viba_41793	TUR/1/2018	cattle	98.7	0	O	ME-SA	PanAsia-2	QOM-15
viba_41813	TUR/10/2018	cattle	98.7	0	O	ME-SA	PanAsia-2	QOM-15
viba_41809	TUR/9/2018	cattle	98.7	0	O	ME-SA	PanAsia-2	QOM-15
viba_41801	TUR/5/2018	cattle	98.7	0	O	ME-SA	PanAsia-2	QOM-15
viba_39896	ISR/33/2018	cattle	98.4	0	O	ME-SA	PanAsia-2	QOM-15
viba_36400	ISR/1/2018	cattle	98.4	0	O	ME-SA	PanAsia-2	QOM-15
viba_39852	ISR/15/2018	gazelle	98.4	0	O	ME-SA	PanAsia-2	QOM-15
viba_36412	ISR/4/2018	cattle	98.4	0	O	ME-SA	PanAsia-2	QOM-15

Most Closely Related Prototype Sequences

see http://www.wrlfmd.org/fmd_genotyping/prototypes.htm

sequence	virus name	Host	% Id.	# Ambig.	serotype	topotype	lineage	sublineage
viba_860	IRN/6/2015	cattle	97.6	0	O	ME-SA	PanAsia-2	QOM-15
viba_666	IRN/18/2010	cattle	93.7	0	O	ME-SA	PanAsia-2	BAL-09
viba_766	IRN/31/2009	cattle	92.6	0	O	ME-SA	PanAsia-2	FAR-09
viba_650	IRN/8/2005	ovine	92.3	0	O	ME-SA	PanAsia-2	
viba_719	IRN/88/2009		91.6	0	O	ME-SA	PanAsia-2	ANT-10
viba_491	TUR/257/2008		91.3	0	O	ME-SA	PanAsia-2	TER-08
viba_850	NEP/1/2015	cattle	91.3	1	O	ME-SA	PanAsia-2	KAT-15
viba_354	PAK/16/2010	cattle	91.0	0	O	ME-SA	PanAsia-2	PUN-10
viba_505	TUR/264/2009		90.4	0	O	ME-SA	PanAsia-2	SAN-09
viba_285	UKG/35/2001	porcine	90.2	0	O	ME-SA	PanAsia	

Virus sample name:	TUR/5/2018
Sender reference:	2018/397 (27)
Location of origin:	Toros, Erdemli, Mersin
Country of origin:	Turkey
Date of collection:	24/05/2018
Host species:	cattle
Serotype:	O
Topotype:	ME-SA
Lineage:	PanAsia-2
Sublineage:	QOM-15
Sequence length:	633
Ambiguities:	0
Material submitted for sequencing:	BTy1
Harvest date of material:	30/04/2019
Primers:	FMD-3161F/FMD-4303R
Received for sequencing:	21/05/2019
Created:	23/05/2019
Last updated:	23/05/2019
VIBASys IDs: sample 41799, genome 41800, sequence viba_41801, sequencing info 41802	

Most Closely Related Sequences

sequence	virus name	Host	% Id.	# Ambig.	serotype	topotype	lineage	sublineage
viba_41793	TUR/1/2018	cattle	99.7	0	O	ME-SA	PanAsia-2	QOM-15
viba_41813	TUR/10/2018	cattle	99.7	0	O	ME-SA	PanAsia-2	QOM-15
viba_41809	TUR/9/2018	cattle	99.7	0	O	ME-SA	PanAsia-2	QOM-15
viba_41789	TUR/17/2017	cattle	99.5	0	O	ME-SA	PanAsia-2	QOM-15
viba_39896	ISR/33/2018	cattle	99.4	0	O	ME-SA	PanAsia-2	QOM-15
viba_36400	ISR/1/2018	cattle	99.4	0	O	ME-SA	PanAsia-2	QOM-15
viba_39852	ISR/15/2018	gazelle	99.4	0	O	ME-SA	PanAsia-2	QOM-15
viba_36412	ISR/4/2018	cattle	99.4	0	O	ME-SA	PanAsia-2	QOM-15
viba_39868	ISR/26/2018	cattle	99.4	0	O	ME-SA	PanAsia-2	QOM-15
viba_36251	Gazit/317556-110/ISR/2018	cattle	99.4	0	O	ME-SA	PanAsia-2	QOM-15

Most Closely Related Prototype Sequences

see http://www.wrlfmd.org/fmd_genotyping/prototypes.htm

sequence	virus name	Host	% Id.	# Ambig.	serotype	topotype	lineage	sublineage
viba_860	IRN/6/2015	cattle	97.6	0	O	ME-SA	PanAsia-2	QOM-15
viba_666	IRN/18/2010	cattle	94.2	0	O	ME-SA	PanAsia-2	BAL-09
viba_650	IRN/8/2005	ovine	92.7	0	O	ME-SA	PanAsia-2	
viba_766	IRN/31/2009	cattle	92.7	0	O	ME-SA	PanAsia-2	FAR-09
viba_719	IRN/88/2009		91.8	0	O	ME-SA	PanAsia-2	ANT-10
viba_491	TUR/257/2008		91.5	0	O	ME-SA	PanAsia-2	TER-08
viba_850	NEP/1/2015	cattle	91.3	1	O	ME-SA	PanAsia-2	KAT-15
viba_354	PAK/16/2010	cattle	90.7	0	O	ME-SA	PanAsia-2	PUN-10
viba_505	TUR/264/2009		90.5	0	O	ME-SA	PanAsia-2	SAN-09
viba_285	UKG/35/2001	porcine	90.4	0	O	ME-SA	PanAsia	

Virus sample name:	TUR/8/2018
Sender reference:	2018-445 (19)
Location of origin:	Tusba, Tusba, Van
Country of origin:	Turkey
Date of collection:	18/07/2018
Host species:	cattle
Serotype:	O
Topotype:	ME-SA
Lineage:	PanAsia-2
Sublineage:	QOM-15
Sequence length:	633
Ambiguities:	0
Material submitted for sequencing:	BTy1
Harvest date of material:	30/04/2019
Primers:	FMD-3161F/FMD-4303R
Received for sequencing:	21/05/2019
Created:	23/05/2019
Last updated:	23/05/2019
VIBASys IDs: sample 41803, genome 41804, sequence viba_41805, sequencing info 41806	

Most Closely Related Sequences

sequence	virus name	Host	% Id.	# Ambig.	serotype	topotype	lineage	sublineage
viba_36080	IRN/13/2018	cattle	99.7	0	O	ME-SA	PanAsia-2	QOM-15
viba_36068	IRN/8/2018	sheep	99.7	0	O	ME-SA	PanAsia-2	QOM-15
viba_36088	IRN/16/2018	cattle	99.7	0	O	ME-SA	PanAsia-2	QOM-15
viba_36072	IRN/11/2018	cattle	99.7	0	O	ME-SA	PanAsia-2	QOM-15
viba_36100	IRN/22/2018	cattle	99.7	0	O	ME-SA	PanAsia-2	QOM-15
viba_36104	IRN/24/2018	cattle	99.5	0	O	ME-SA	PanAsia-2	QOM-15
viba_36084	IRN/15/2018	sheep	99.5	0	O	ME-SA	PanAsia-2	QOM-15
viba_37500	TUR/435/2018		99.5	0	O	ME-SA	PanAsia-2	QOM-15
viba_36092	IRN/20/2018	sheep	99.5	0	O	ME-SA	PanAsia-2	QOM-15
viba_23736	KUW/1/2016	cattle	99.4	0	O	ME-SA	PanAsia-2	QOM-15

Most Closely Related Prototype Sequences

see http://www.wrlfmd.org/fmd_genotyping/prototypes.htm

sequence	virus name	Host	% Id.	# Ambig.	serotype	topotype	lineage	sublineage
viba_860	IRN/6/2015	cattle	98.7	0	O	ME-SA	PanAsia-2	QOM-15
viba_666	IRN/18/2010	cattle	94.3	0	O	ME-SA	PanAsia-2	BAL-09
viba_766	IRN/31/2009	cattle	92.9	0	O	ME-SA	PanAsia-2	FAR-09
viba_650	IRN/8/2005	ovine	92.3	0	O	ME-SA	PanAsia-2	
viba_491	TUR/257/2008		91.9	0	O	ME-SA	PanAsia-2	TER-08
viba_850	NEP/1/2015	cattle	91.6	1	O	ME-SA	PanAsia-2	KAT-15
viba_719	IRN/88/2009		91.6	0	O	ME-SA	PanAsia-2	ANT-10
viba_354	PAK/16/2010	cattle	91.2	0	O	ME-SA	PanAsia-2	PUN-10
viba_505	TUR/264/2009		91.0	0	O	ME-SA	PanAsia-2	SAN-09
viba_285	UKG/35/2001	porcine	90.2	0	O	ME-SA	PanAsia	

Virus sample name:	TUR/9/2018
Sender reference:	2018/444 (25)
Location of origin:	Ilicak, Baskale, Van
Country of origin:	Turkey
Date of collection:	20/07/2018
Host species:	cattle
Serotype:	O
Topotype:	ME-SA
Lineage:	PanAsia-2
Sublineage:	QOM-15
Sequence length:	633
Ambiguities:	0
Material submitted for sequencing:	BTy1
Harvest date of material:	30/04/2019
Primers:	FMD-3161F/FMD-4303R
Received for sequencing:	21/05/2019
Created:	23/05/2019
Last updated:	23/05/2019
VIBASys IDs: sample 41807, genome 41808, sequence viba_41809, sequencing info 41810	

Most Closely Related Sequences

sequence	virus name	Host	% Id.	# Ambig.	serotype	topotype	lineage	sublineage
viba_41813	TUR/10/2018	cattle	100.0	0	O	ME-SA	PanAsia-2	QOM-15
viba_41793	TUR/1/2018	cattle	99.7	0	O	ME-SA	PanAsia-2	QOM-15
viba_41801	TUR/5/2018	cattle	99.7	0	O	ME-SA	PanAsia-2	QOM-15
viba_41789	TUR/17/2017	cattle	99.5	0	O	ME-SA	PanAsia-2	QOM-15
viba_39896	ISR/33/2018	cattle	99.4	0	O	ME-SA	PanAsia-2	QOM-15
viba_36400	ISR/1/2018	cattle	99.4	0	O	ME-SA	PanAsia-2	QOM-15
viba_39852	ISR/15/2018	gazelle	99.4	0	O	ME-SA	PanAsia-2	QOM-15
viba_36412	ISR/4/2018	cattle	99.4	0	O	ME-SA	PanAsia-2	QOM-15
viba_39868	ISR/26/2018	cattle	99.4	0	O	ME-SA	PanAsia-2	QOM-15
viba_36251	Gazit/317556-110/ISR/2018	cattle	99.4	0	O	ME-SA	PanAsia-2	QOM-15

Most Closely Related Prototype Sequences

see http://www.wrlfmd.org/fmd_genotyping/prototypes.htm

sequence	virus name	Host	% Id.	# Ambig.	serotype	topotype	lineage	sublineage
viba_860	IRN/6/2015	cattle	97.6	0	O	ME-SA	PanAsia-2	QOM-15
viba_666	IRN/18/2010	cattle	94.2	0	O	ME-SA	PanAsia-2	BAL-09
viba_766	IRN/31/2009	cattle	92.7	0	O	ME-SA	PanAsia-2	FAR-09
viba_650	IRN/8/2005	ovine	92.4	0	O	ME-SA	PanAsia-2	
viba_719	IRN/88/2009		91.8	0	O	ME-SA	PanAsia-2	ANT-10
viba_491	TUR/257/2008		91.5	0	O	ME-SA	PanAsia-2	TER-08
viba_850	NEP/1/2015	cattle	91.3	1	O	ME-SA	PanAsia-2	KAT-15
viba_354	PAK/16/2010	cattle	90.7	0	O	ME-SA	PanAsia-2	PUN-10
viba_505	TUR/264/2009		90.5	0	O	ME-SA	PanAsia-2	SAN-09
viba_285	UKG/35/2001	porcine	90.2	0	O	ME-SA	PanAsia	

Virus sample name:	TUR/10/2018
Sender reference:	2018-443 (34)
Location of origin:	Ilicak, Baskale, Van
Country of origin:	Turkey
Date of collection:	20/07/2018
Host species:	cattle
Serotype:	O
Topotype:	ME-SA
Lineage:	PanAsia-2
Sublineage:	QOM-15
Sequence length:	633
Ambiguities:	0
Material submitted for sequencing:	BTy1
Harvest date of material:	30/04/2019
Primers:	FMD-3161F/FMD-4303R
Received for sequencing:	21/05/2019
Created:	23/05/2019
Last updated:	23/05/2019
VIBASys IDs: sample 41811, genome 41812, sequence viba_41813, sequencing info 41814	

Most Closely Related Sequences

sequence	virus name	Host	% Id.	# Ambig.	serotype	topotype	lineage	sublineage
viba_41809	TUR/9/2018	cattle	100.0	0	O	ME-SA	PanAsia-2	QOM-15
viba_41793	TUR/1/2018	cattle	99.7	0	O	ME-SA	PanAsia-2	QOM-15
viba_41801	TUR/5/2018	cattle	99.7	0	O	ME-SA	PanAsia-2	QOM-15
viba_41789	TUR/17/2017	cattle	99.5	0	O	ME-SA	PanAsia-2	QOM-15
viba_39896	ISR/33/2018	cattle	99.4	0	O	ME-SA	PanAsia-2	QOM-15
viba_36400	ISR/1/2018	cattle	99.4	0	O	ME-SA	PanAsia-2	QOM-15
viba_39852	ISR/15/2018	gazelle	99.4	0	O	ME-SA	PanAsia-2	QOM-15
viba_36412	ISR/4/2018	cattle	99.4	0	O	ME-SA	PanAsia-2	QOM-15
viba_39868	ISR/26/2018	cattle	99.4	0	O	ME-SA	PanAsia-2	QOM-15
viba_36251	Gazit/317556-110/ISR/2018	cattle	99.4	0	O	ME-SA	PanAsia-2	QOM-15

Most Closely Related Prototype Sequences

see http://www.wrlfmd.org/fmd_genotyping/prototypes.htm

sequence	virus name	Host	% Id.	# Ambig.	serotype	topotype	lineage	sublineage
viba_860	IRN/6/2015	cattle	97.6	0	O	ME-SA	PanAsia-2	QOM-15
viba_666	IRN/18/2010	cattle	94.2	0	O	ME-SA	PanAsia-2	BAL-09
viba_766	IRN/31/2009	cattle	92.7	0	O	ME-SA	PanAsia-2	FAR-09
viba_650	IRN/8/2005	ovine	92.4	0	O	ME-SA	PanAsia-2	
viba_719	IRN/88/2009		91.8	0	O	ME-SA	PanAsia-2	ANT-10
viba_491	TUR/257/2008		91.5	0	O	ME-SA	PanAsia-2	TER-08
viba_850	NEP/1/2015	cattle	91.3	1	O	ME-SA	PanAsia-2	KAT-15
viba_354	PAK/16/2010	cattle	90.7	0	O	ME-SA	PanAsia-2	PUN-10
viba_505	TUR/264/2009		90.5	0	O	ME-SA	PanAsia-2	SAN-09
viba_285	UKG/35/2001	porcine	90.2	0	O	ME-SA	PanAsia	

Virus sample name:	TUR/11/2018
Sender reference:	2018-456 (20)
Location of origin:	Pinarbasi, Derebucak, Konya
Country of origin:	Turkey
Date of collection:	13/08/2018
Host species:	cattle
Serotype:	O
Topotype:	ME-SA
Lineage:	PanAsia-2
Sublineage:	QOM-15
Sequence length:	633
Ambiguities:	0
Material submitted for sequencing:	BTy1
Harvest date of material:	30/04/2019
Primers:	FMD-3161F/FMD-4303R
Received for sequencing:	21/05/2019
Created:	23/05/2019
Last updated:	23/05/2019
VIBASys IDs: sample 41815, genome 41816, sequence viba_41817, sequencing info 41818	

Most Closely Related Sequences

sequence	virus name	Host	% Id.	# Ambig.	serotype	topotype	lineage	sublineage
viba_37492	TUR/65/2018		99.1	0	O	ME-SA	PanAsia-2	QOM-15
viba_41789	TUR/17/2017	cattle	98.9	0	O	ME-SA	PanAsia-2	QOM-15
viba_41793	TUR/1/2018	cattle	98.7	0	O	ME-SA	PanAsia-2	QOM-15
viba_41813	TUR/10/2018	cattle	98.7	0	O	ME-SA	PanAsia-2	QOM-15
viba_41809	TUR/9/2018	cattle	98.7	0	O	ME-SA	PanAsia-2	QOM-15
viba_41801	TUR/5/2018	cattle	98.7	0	O	ME-SA	PanAsia-2	QOM-15
viba_39896	ISR/33/2018	cattle	98.4	0	O	ME-SA	PanAsia-2	QOM-15
viba_36400	ISR/1/2018	cattle	98.4	0	O	ME-SA	PanAsia-2	QOM-15
viba_39852	ISR/15/2018	gazelle	98.4	0	O	ME-SA	PanAsia-2	QOM-15
viba_36412	ISR/4/2018	cattle	98.4	0	O	ME-SA	PanAsia-2	QOM-15

Most Closely Related Prototype Sequences

see http://www.wrlfmd.org/fmd_genotyping/prototypes.htm

sequence	virus name	Host	% Id.	# Ambig.	serotype	topotype	lineage	sublineage
viba_860	IRN/6/2015	cattle	97.3	0	O	ME-SA	PanAsia-2	QOM-15
viba_666	IRN/18/2010	cattle	93.8	0	O	ME-SA	PanAsia-2	BAL-09
viba_766	IRN/31/2009	cattle	92.4	0	O	ME-SA	PanAsia-2	FAR-09
viba_650	IRN/8/2005	ovine	92.1	0	O	ME-SA	PanAsia-2	
viba_719	IRN/88/2009		91.6	0	O	ME-SA	PanAsia-2	ANT-10
viba_491	TUR/257/2008		91.2	0	O	ME-SA	PanAsia-2	TER-08
viba_850	NEP/1/2015	cattle	91.2	1	O	ME-SA	PanAsia-2	KAT-15
viba_354	PAK/16/2010	cattle	90.4	0	O	ME-SA	PanAsia-2	PUN-10
viba_505	TUR/264/2009		90.2	0	O	ME-SA	PanAsia-2	SAN-09
viba_285	UKG/35/2001	porcine	89.7	0	O	ME-SA	PanAsia	

Virus sample name:	TUR/12/2018
Sender reference:	2018-467 (23)
Location of origin:	Geycek, Mucur, Kirsehir
Country of origin:	Turkey
Date of collection:	03/09/2018
Host species:	cattle
Serotype:	O
Topotype:	ME-SA
Lineage:	PanAsia-2
Sublineage:	QOM-15
Sequence length:	633
Ambiguities:	0
Material submitted for sequencing:	BTy1
Harvest date of material:	30/04/2019
Primers:	FMD-3161F/FMD-4303R
Received for sequencing:	21/05/2019
Created:	23/05/2019
Last updated:	23/05/2019

VIBASys IDs: sample 41819, genome 41820, sequence viba_41821, sequencing info 41822

Most Closely Related Sequences

sequence	virus name	Host	% Id.	# Ambig.	serotype	topotype	lineage	sublineage
viba_41789	TUR/17/2017	cattle	98.6	0	O	ME-SA	PanAsia-2	QOM-15
viba_41793	TUR/1/2018	cattle	98.4	0	O	ME-SA	PanAsia-2	QOM-15
viba_41813	TUR/10/2018	cattle	98.4	0	O	ME-SA	PanAsia-2	QOM-15
viba_41809	TUR/9/2018	cattle	98.4	0	O	ME-SA	PanAsia-2	QOM-15
viba_37492	TUR/65/2018		98.4	0	O	ME-SA	PanAsia-2	QOM-15
viba_41801	TUR/5/2018	cattle	98.4	0	O	ME-SA	PanAsia-2	QOM-15
viba_39896	ISR/33/2018	cattle	98.1	0	O	ME-SA	PanAsia-2	QOM-15
viba_36400	ISR/1/2018	cattle	98.1	0	O	ME-SA	PanAsia-2	QOM-15
viba_39852	ISR/15/2018	gazelle	98.1	0	O	ME-SA	PanAsia-2	QOM-15
viba_36412	ISR/4/2018	cattle	98.1	0	O	ME-SA	PanAsia-2	QOM-15

Most Closely Related Prototype Sequences

see http://www.wrlfmd.org/fmd_genotyping/prototypes.htm

sequence	virus name	Host	% Id.	# Ambig.	serotype	topotype	lineage	sublineage
viba_860	IRN/6/2015	cattle	97.3	0	O	ME-SA	PanAsia-2	QOM-15
viba_666	IRN/18/2010	cattle	93.8	0	O	ME-SA	PanAsia-2	BAL-09
viba_766	IRN/31/2009	cattle	92.4	0	O	ME-SA	PanAsia-2	FAR-09
viba_650	IRN/8/2005	ovine	91.8	0	O	ME-SA	PanAsia-2	
viba_850	NEP/1/2015	cattle	91.6	1	O	ME-SA	PanAsia-2	KAT-15
viba_719	IRN/88/2009		91.2	0	O	ME-SA	PanAsia-2	ANT-10
viba_491	TUR/257/2008		90.8	0	O	ME-SA	PanAsia-2	TER-08
viba_354	PAK/16/2010	cattle	90.7	0	O	ME-SA	PanAsia-2	PUN-10
viba_505	TUR/264/2009		89.9	0	O	ME-SA	PanAsia-2	SAN-09
viba_285	UKG/35/2001	porcine	89.4	0	O	ME-SA	PanAsia	

Virus sample name:	TUR/14/2018
Sender reference:	2018-510 (35)
Location of origin:	Cikrikci, Edremit, Balikesir
Country of origin:	Turkey
Date of collection:	30/10/2018
Host species:	cattle
Serotype:	O
Topotype:	ME-SA
Lineage:	PanAsia-2
Sublineage:	QOM-15
Sequence length:	633
Ambiguities:	0
Material submitted for sequencing:	BTy1
Harvest date of material:	30/04/2019
Primers:	FMD-3161F/FMD-4303R
Received for sequencing:	21/05/2019
Created:	23/05/2019
Last updated:	23/05/2019

VIBASys IDs: sample 41823, genome 41824, sequence viba_41825, sequencing info 41826

Most Closely Related Sequences

sequence	virus name	Host	% Id.	# Ambig.	serotype	topotype	lineage	sublineage
viba_41789	TUR/17/2017	cattle	99.1	0	O	ME-SA	PanAsia-2	QOM-15
viba_41793	TUR/1/2018	cattle	98.9	0	O	ME-SA	PanAsia-2	QOM-15
viba_41813	TUR/10/2018	cattle	98.9	0	O	ME-SA	PanAsia-2	QOM-15
viba_41809	TUR/9/2018	cattle	98.9	0	O	ME-SA	PanAsia-2	QOM-15
viba_37492	TUR/65/2018		98.9	0	O	ME-SA	PanAsia-2	QOM-15
viba_41801	TUR/5/2018	cattle	98.9	0	O	ME-SA	PanAsia-2	QOM-15
viba_39896	ISR/33/2018	cattle	98.6	0	O	ME-SA	PanAsia-2	QOM-15
viba_36400	ISR/1/2018	cattle	98.6	0	O	ME-SA	PanAsia-2	QOM-15
viba_39852	ISR/15/2018	gazelle	98.6	0	O	ME-SA	PanAsia-2	QOM-15
viba_36412	ISR/4/2018	cattle	98.6	0	O	ME-SA	PanAsia-2	QOM-15

Most Closely Related Prototype Sequences

see http://www.wrlfmd.org/fmd_genotyping/prototypes.htm

sequence	virus name	Host	% Id.	# Ambig.	serotype	topotype	lineage	sublineage
viba_860	IRN/6/2015	cattle	97.2	0	O	ME-SA	PanAsia-2	QOM-15
viba_666	IRN/18/2010	cattle	93.7	0	O	ME-SA	PanAsia-2	BAL-09
viba_766	IRN/31/2009	cattle	92.4	0	O	ME-SA	PanAsia-2	FAR-09
viba_650	IRN/8/2005	ovine	92.1	0	O	ME-SA	PanAsia-2	
viba_719	IRN/88/2009		91.5	0	O	ME-SA	PanAsia-2	ANT-10
viba_850	NEP/1/2015	cattle	91.3	1	O	ME-SA	PanAsia-2	KAT-15
viba_491	TUR/257/2008		91.2	0	O	ME-SA	PanAsia-2	TER-08
viba_354	PAK/16/2010	cattle	91.0	0	O	ME-SA	PanAsia-2	PUN-10
viba_505	TUR/264/2009		90.2	0	O	ME-SA	PanAsia-2	SAN-09
viba_285	UKG/35/2001	porcine	89.7	0	O	ME-SA	PanAsia	

Virus sample name:	TUR/1/2019
Sender reference:	2019-11 (36)
Location of origin:	Arpaoz, Merkez, Corum
Country of origin:	Turkey
Date of collection:	06/02/2019
Host species:	cattle
Serotype:	O
Topotype:	ME-SA
Lineage:	PanAsia-2
Sublineage:	QOM-15
Sequence length:	633
Ambiguities:	0
Material submitted for sequencing:	BTy1
Harvest date of material:	08/05/2019
Primers:	FMD-3161F/FMD-4303R
Received for sequencing:	21/05/2019
Created:	23/05/2019
Last updated:	23/05/2019
VIBASys IDs: sample 41827, genome 41828, sequence viba_41829, sequencing info 41830	

Most Closely Related Sequences

sequence	virus name	Host	% Id.	# Ambig.	serotype	topotype	lineage	sublineage
viba_41841	TUR/4/2019	cattle	99.5	0	O	ME-SA	PanAsia-2	QOM-15
viba_41837	TUR/3/2019	cattle	99.2	0	O	ME-SA	PanAsia-2	QOM-15
viba_41845	TUR/7/2019	cattle	99.2	0	O	ME-SA	PanAsia-2	QOM-15
viba_34055	TUR/276/2017.519		97.6	1	O	ME-SA	PanAsia-2	QOM-15
viba_23736	KUW/1/2016	cattle	97.3	0	O	ME-SA	PanAsia-2	QOM-15
viba_41785	TUR/7/2017	cattle	97.3	0	O	ME-SA	PanAsia-2	QOM-15
viba_23740	KUW/2/2016	cattle	97.3	0	O	ME-SA	PanAsia-2	QOM-15
viba_27677	IRN/13/2016	cattle	97.3	0	O	ME-SA	PanAsia-2	QOM-15
viba_27681	IRN/15/2016	sheep	97.3	0	O	ME-SA	PanAsia-2	QOM-15
viba_27685	IRN/16/2016	sheep	97.3	0	O	ME-SA	PanAsia-2	QOM-15

Most Closely Related Prototype Sequences

see http://www.wrlfmd.org/fmd_genotyping/prototypes.htm

sequence	virus name	Host	% Id.	# Ambig.	serotype	topotype	lineage	sublineage
viba_860	IRN/6/2015	cattle	96.8	0	O	ME-SA	PanAsia-2	QOM-15
viba_666	IRN/18/2010	cattle	94.0	0	O	ME-SA	PanAsia-2	BAL-09
viba_766	IRN/31/2009	cattle	92.7	0	O	ME-SA	PanAsia-2	FAR-09
viba_650	IRN/8/2005	ovine	91.5	0	O	ME-SA	PanAsia-2	
viba_719	IRN/88/2009		91.5	0	O	ME-SA	PanAsia-2	ANT-10
viba_491	TUR/257/2008		91.0	0	O	ME-SA	PanAsia-2	TER-08
viba_354	PAK/16/2010	cattle	90.7	0	O	ME-SA	PanAsia-2	PUN-10
viba_850	NEP/1/2015	cattle	90.5	1	O	ME-SA	PanAsia-2	KAT-15
viba_505	TUR/264/2009		90.0	0	O	ME-SA	PanAsia-2	SAN-09
viba_285	UKG/35/2001	porcine	90.0	0	O	ME-SA	PanAsia	

Virus sample name:	TUR/2/2019
Sender reference:	2019-16 (37)
Location of origin:	Ozanli, Sebinkarahisar, Giresun
Country of origin:	Turkey
Date of collection:	07/02/2019
Host species:	cattle
Serotype:	O
Topotype:	ME-SA
Lineage:	PanAsia-2
Sublineage:	QOM-15
Sequence length:	633
Ambiguities:	0
Material submitted for sequencing:	BTY2
Harvest date of material:	10/05/2019
Primers:	FMD-3161F/FMD-4303R
Received for sequencing:	21/05/2019
Created:	23/05/2019
Last updated:	23/05/2019
VIBASys IDs: sample 41831, genome 41832, sequence viba_41833, sequencing info 41834	

Most Closely Related Sequences

sequence	virus name	Host	% Id.	# Ambig.	serotype	topotype	lineage	sublineage
viba_37492	TUR/65/2018		98.3	0	O	ME-SA	PanAsia-2	QOM-15
viba_41789	TUR/17/2017	cattle	97.9	0	O	ME-SA	PanAsia-2	QOM-15
viba_41793	TUR/1/2018	cattle	97.8	0	O	ME-SA	PanAsia-2	QOM-15
viba_41813	TUR/10/2018	cattle	97.8	0	O	ME-SA	PanAsia-2	QOM-15
viba_41809	TUR/9/2018	cattle	97.8	0	O	ME-SA	PanAsia-2	QOM-15
viba_41817	TUR/11/2018	cattle	97.8	0	O	ME-SA	PanAsia-2	QOM-15
viba_41801	TUR/5/2018	cattle	97.8	0	O	ME-SA	PanAsia-2	QOM-15
viba_41797	TUR/2/2018	cattle	97.6	0	O	ME-SA	PanAsia-2	QOM-15
viba_39896	ISR/33/2018	cattle	97.5	0	O	ME-SA	PanAsia-2	QOM-15
viba_36400	ISR/1/2018	cattle	97.5	0	O	ME-SA	PanAsia-2	QOM-15

Most Closely Related Prototype Sequences

see http://www.wrlfmd.org/fmd_genotyping/prototypes.htm

sequence	virus name	Host	% Id.	# Ambig.	serotype	topotype	lineage	sublineage
viba_860	IRN/6/2015	cattle	96.4	0	O	ME-SA	PanAsia-2	QOM-15
viba_666	IRN/18/2010	cattle	92.9	0	O	ME-SA	PanAsia-2	BAL-09
viba_766	IRN/31/2009	cattle	91.5	0	O	ME-SA	PanAsia-2	FAR-09
viba_650	IRN/8/2005	ovine	91.2	0	O	ME-SA	PanAsia-2	
viba_719	IRN/88/2009		90.7	0	O	ME-SA	PanAsia-2	ANT-10
viba_491	TUR/257/2008		90.2	0	O	ME-SA	PanAsia-2	TER-08
viba_354	PAK/16/2010	cattle	90.0	0	O	ME-SA	PanAsia-2	PUN-10
viba_850	NEP/1/2015	cattle	90.0	1	O	ME-SA	PanAsia-2	KAT-15
viba_505	TUR/264/2009		89.3	0	O	ME-SA	PanAsia-2	SAN-09
viba_285	UKG/35/2001	porcine	88.8	0	O	ME-SA	PanAsia	

Virus sample name:	TUR/3/2019
Sender reference:	2019-29 (31)
Location of origin:	Camurlu, Merkez, Kars
Country of origin:	Turkey
Date of collection:	25/02/2019
Host species:	cattle
Serotype:	O
Topotype:	ME-SA
Lineage:	PanAsia-2
Sublineage:	QOM-15
Sequence length:	633
Ambiguities:	0
Material submitted for sequencing:	BTy1
Harvest date of material:	08/05/2019
Primers:	FMD-3161F/FMD-4303R
Received for sequencing:	21/05/2019
Created:	23/05/2019
Last updated:	23/05/2019
VIBASys IDs: sample 41835, genome 41836, sequence viba_41837, sequencing info 41838	

Most Closely Related Sequences

sequence	virus name	Host	% Id.	# Ambig.	serotype	topotype	lineage	sublineage
viba_41841	TUR/4/2019	cattle	99.7	0	O	ME-SA	PanAsia-2	QOM-15
viba_41845	TUR/7/2019	cattle	99.4	0	O	ME-SA	PanAsia-2	QOM-15
viba_41829	TUR/1/2019	cattle	99.2	0	O	ME-SA	PanAsia-2	QOM-15
viba_34055	TUR/276/2017.519		98.1	1	O	ME-SA	PanAsia-2	QOM-15
viba_23736	KUW/1/2016	cattle	97.8	0	O	ME-SA	PanAsia-2	QOM-15
viba_41785	TUR/7/2017	cattle	97.8	0	O	ME-SA	PanAsia-2	QOM-15
viba_23740	KUW/2/2016	cattle	97.8	0	O	ME-SA	PanAsia-2	QOM-15
viba_27677	IRN/13/2016	cattle	97.8	0	O	ME-SA	PanAsia-2	QOM-15
viba_27681	IRN/15/2016	sheep	97.8	0	O	ME-SA	PanAsia-2	QOM-15
viba_27685	IRN/16/2016	sheep	97.8	0	O	ME-SA	PanAsia-2	QOM-15

Most Closely Related Prototype Sequences

see http://www.wrlfmd.org/fmd_genotyping/prototypes.htm

sequence	virus name	Host	% Id.	# Ambig.	serotype	topotype	lineage	sublineage
viba_860	IRN/6/2015	cattle	97.3	0	O	ME-SA	PanAsia-2	QOM-15
viba_666	IRN/18/2010	cattle	94.5	0	O	ME-SA	PanAsia-2	BAL-09
viba_766	IRN/31/2009	cattle	93.2	0	O	ME-SA	PanAsia-2	FAR-09
viba_650	IRN/8/2005	ovine	91.9	0	O	ME-SA	PanAsia-2	
viba_719	IRN/88/2009		91.6	0	O	ME-SA	PanAsia-2	ANT-10
viba_491	TUR/257/2008		91.5	0	O	ME-SA	PanAsia-2	TER-08
viba_354	PAK/16/2010	cattle	91.2	0	O	ME-SA	PanAsia-2	PUN-10
viba_850	NEP/1/2015	cattle	91.0	1	O	ME-SA	PanAsia-2	KAT-15
viba_505	TUR/264/2009		90.5	0	O	ME-SA	PanAsia-2	SAN-09
viba_285	UKG/35/2001	porcine	90.5	0	O	ME-SA	PanAsia	

Virus sample name:	TUR/4/2019
Sender reference:	2019-34 (38)
Location of origin:	Merkez Safak, Omerli, Mardin
Country of origin:	Turkey
Date of collection:	25/02/2019
Host species:	cattle
Serotype:	O
Topotype:	ME-SA
Lineage:	PanAsia-2
Sublineage:	QOM-15
Sequence length:	633
Ambiguities:	0
Material submitted for sequencing:	BTy1
Harvest date of material:	08/05/2019
Primers:	FMD-3161F/FMD-4303R
Received for sequencing:	21/05/2019
Created:	23/05/2019
Last updated:	23/05/2019
VIBASys IDs: sample 41839, genome 41840, sequence viba_41841, sequencing info 41842	

Most Closely Related Sequences

sequence	virus name	Host	% Id.	# Ambig.	serotype	topotype	lineage	sublineage
viba_41837	TUR/3/2019	cattle	99.7	0	O	ME-SA	PanAsia-2	QOM-15
viba_41845	TUR/7/2019	cattle	99.7	0	O	ME-SA	PanAsia-2	QOM-15
viba_41829	TUR/1/2019	cattle	99.5	0	O	ME-SA	PanAsia-2	QOM-15
viba_34055	TUR/276/2017.519		98.1	1	O	ME-SA	PanAsia-2	QOM-15
viba_23736	KUW/1/2016	cattle	97.8	0	O	ME-SA	PanAsia-2	QOM-15
viba_41785	TUR/7/2017	cattle	97.8	0	O	ME-SA	PanAsia-2	QOM-15
viba_23740	KUW/2/2016	cattle	97.8	0	O	ME-SA	PanAsia-2	QOM-15
viba_27677	IRN/13/2016	cattle	97.8	0	O	ME-SA	PanAsia-2	QOM-15
viba_27681	IRN/15/2016	sheep	97.8	0	O	ME-SA	PanAsia-2	QOM-15
viba_27685	IRN/16/2016	sheep	97.8	0	O	ME-SA	PanAsia-2	QOM-15

Most Closely Related Prototype Sequences

see http://www.wrlfmd.org/fmd_genotyping/prototypes.htm

sequence	virus name	Host	% Id.	# Ambig.	serotype	topotype	lineage	sublineage
viba_860	IRN/6/2015	cattle	97.3	0	O	ME-SA	PanAsia-2	QOM-15
viba_666	IRN/18/2010	cattle	94.5	0	O	ME-SA	PanAsia-2	BAL-09
viba_766	IRN/31/2009	cattle	93.2	0	O	ME-SA	PanAsia-2	FAR-09
viba_650	IRN/8/2005	ovine	91.9	0	O	ME-SA	PanAsia-2	
viba_719	IRN/88/2009		91.6	0	O	ME-SA	PanAsia-2	ANT-10
viba_491	TUR/257/2008		91.5	0	O	ME-SA	PanAsia-2	TER-08
viba_354	PAK/16/2010	cattle	91.2	0	O	ME-SA	PanAsia-2	PUN-10
viba_850	NEP/1/2015	cattle	91.0	1	O	ME-SA	PanAsia-2	KAT-15
viba_505	TUR/264/2009		90.5	0	O	ME-SA	PanAsia-2	SAN-09
viba_285	UKG/35/2001	porcine	90.5	0	O	ME-SA	PanAsia	

Virus sample name:	TUR/7/2019
Sender reference:	2019-66 (14)
Location of origin:	Davraz, Merkez, Isparta
Country of origin:	Turkey
Date of collection:	03/04/2019
Host species:	cattle
Serotype:	O
Topotype:	ME-SA
Lineage:	PanAsia-2
Sublineage:	QOM-15
Sequence length:	633
Ambiguities:	0
Material submitted for sequencing:	BTy1
Harvest date of material:	08/05/2019
Primers:	FMD-3161F/FMD-4303R
Received for sequencing:	21/05/2019
Created:	23/05/2019
Last updated:	23/05/2019

VIBASys IDs: sample 41843, genome 41844, sequence viba_41845, sequencing info 41846

Most Closely Related Sequences

sequence	virus name	Host	% Id.	# Ambig.	serotype	topotype	lineage	sublineage
viba_41841	TUR/4/2019	cattle	99.7	0	O	ME-SA	PanAsia-2	QOM-15
viba_41837	TUR/3/2019	cattle	99.4	0	O	ME-SA	PanAsia-2	QOM-15
viba_41829	TUR/1/2019	cattle	99.2	0	O	ME-SA	PanAsia-2	QOM-15
viba_34055	TUR/276/2017.519		97.8	1	O	ME-SA	PanAsia-2	QOM-15
viba_23736	KUW/1/2016	cattle	97.5	0	O	ME-SA	PanAsia-2	QOM-15
viba_41785	TUR/7/2017	cattle	97.5	0	O	ME-SA	PanAsia-2	QOM-15
viba_23740	KUW/2/2016	cattle	97.5	0	O	ME-SA	PanAsia-2	QOM-15
viba_27677	IRN/13/2016	cattle	97.5	0	O	ME-SA	PanAsia-2	QOM-15
viba_27681	IRN/15/2016	sheep	97.5	0	O	ME-SA	PanAsia-2	QOM-15
viba_27685	IRN/16/2016	sheep	97.5	0	O	ME-SA	PanAsia-2	QOM-15

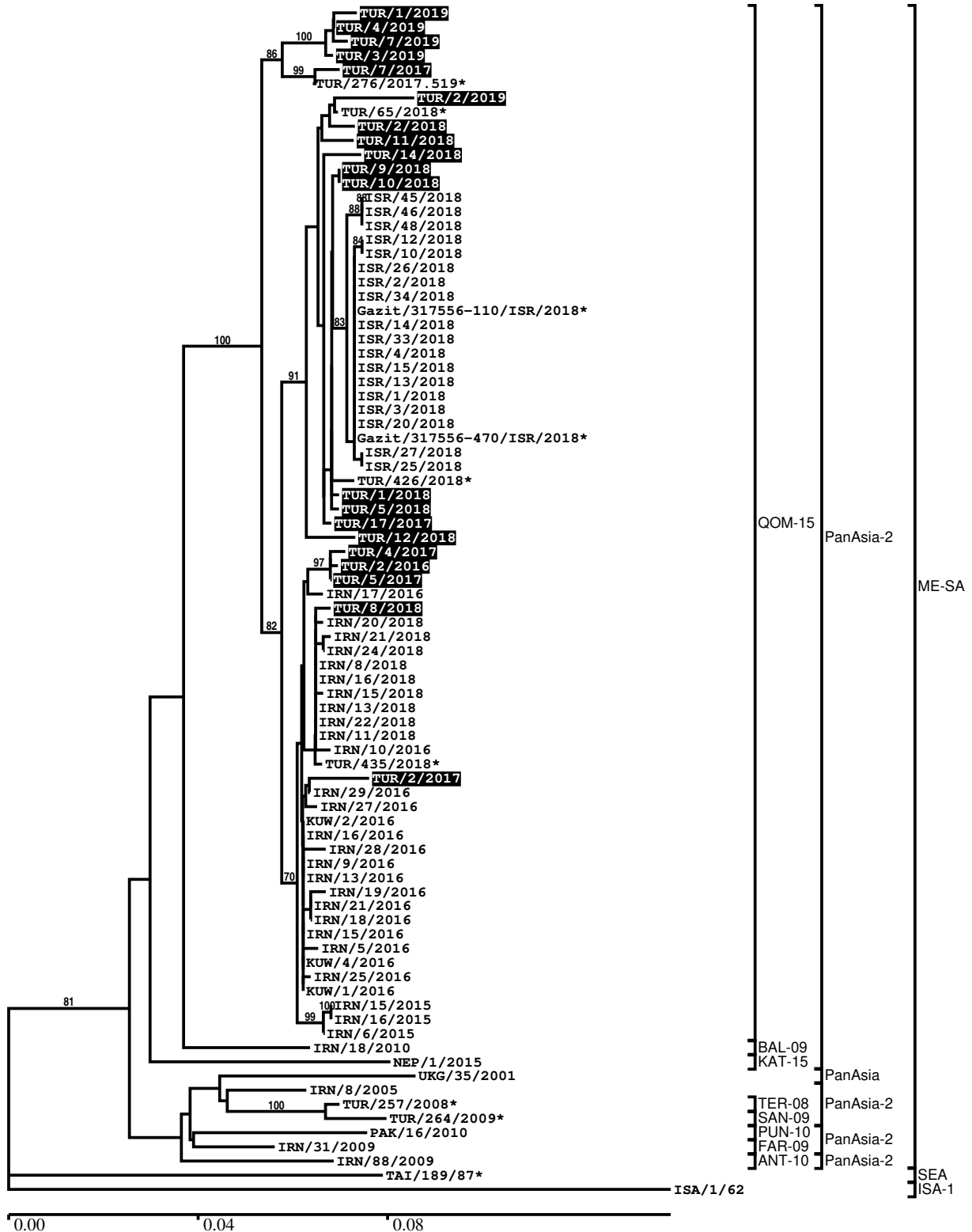
Most Closely Related Prototype Sequences

see http://www.wrlfmd.org/fmd_genotyping/prototypes.htm

sequence	virus name	Host	% Id.	# Ambig.	serotype	topotype	lineage	sublineage
viba_860	IRN/6/2015	cattle	97.3	0	O	ME-SA	PanAsia-2	QOM-15
viba_666	IRN/18/2010	cattle	94.8	0	O	ME-SA	PanAsia-2	BAL-09
viba_766	IRN/31/2009	cattle	93.2	0	O	ME-SA	PanAsia-2	FAR-09
viba_650	IRN/8/2005	ovine	92.1	0	O	ME-SA	PanAsia-2	
viba_491	TUR/257/2008		91.8	0	O	ME-SA	PanAsia-2	TER-08
viba_719	IRN/88/2009		91.6	0	O	ME-SA	PanAsia-2	ANT-10
viba_354	PAK/16/2010	cattle	91.5	0	O	ME-SA	PanAsia-2	PUN-10
viba_850	NEP/1/2015	cattle	90.8	1	O	ME-SA	PanAsia-2	KAT-15
viba_505	TUR/264/2009		90.8	0	O	ME-SA	PanAsia-2	SAN-09
viba_285	UKG/35/2001	porcine	90.4	0	O	ME-SA	PanAsia	

Report on FMDV O in Turkey in 2016, 2017, 2018, 2019

Batch: WRLFMD/2019/00023



*, not a WRLFMD Reference Number

Analysis Parameters

VP1 subsequence extractor:	vp1_O
Query sequence set:	WRLFMD/2019/00023-Turkey-O (20 sequences)
Sequence database set:	allseqs_O (4548 sequences)
Prototype sequence set:	!prototypes_O (49 sequences)
Number of related sequences reported:	10
Minimal VP1 subsequence match length	600
Sequence alignment method:	muscle (default parameters)
Sequence alignment length:	636
Phylogeny reconstruction method:	fdnadist, fneighbor
Number of bootstrap samples:	1000
Random seed for bootstrapping:	1
Displaying bootstrap values above:	70.0%
Number of sequences in tree capped at:	100
Number of prototype sequences in tree:	10
VIBASys version:	reflabs-1.1.2

Sequences in the Phylogenetic Tree

All sequences in the tree are in taxonomic group FMDV/O

label	accession	host(s)	lab	country	taxonomic information
TUR/1/2019	n/a	cattle	WRLFMD	Turkey	ME-SA/PanAsia-2/QOM-15
TUR/4/2019	n/a	cattle	WRLFMD	Turkey	ME-SA/PanAsia-2/QOM-15
TUR/7/2019	n/a	cattle	WRLFMD	Turkey	ME-SA/PanAsia-2/QOM-15
TUR/3/2019	n/a	cattle	WRLFMD	Turkey	ME-SA/PanAsia-2/QOM-15
TUR/7/2017	n/a	cattle	WRLFMD	Turkey	ME-SA/PanAsia-2/QOM-15
TUR/276/2017.519*	n/a	n/a	FMDI	Turkey	ME-SA/PanAsia-2/QOM-15
TUR/2/2019	n/a	cattle	WRLFMD	Turkey	ME-SA/PanAsia-2/QOM-15
TUR/65/2018*	n/a	n/a	FMDI	Turkey	ME-SA/PanAsia-2/QOM-15
TUR/2/2018	n/a	cattle	WRLFMD	Turkey	ME-SA/PanAsia-2/QOM-15
TUR/11/2018	n/a	cattle	WRLFMD	Turkey	ME-SA/PanAsia-2/QOM-15
TUR/14/2018	n/a	cattle	WRLFMD	Turkey	ME-SA/PanAsia-2/QOM-15
TUR/9/2018	n/a	cattle	WRLFMD	Turkey	ME-SA/PanAsia-2/QOM-15
TUR/10/2018	n/a	cattle	WRLFMD	Turkey	ME-SA/PanAsia-2/QOM-15
ISR/45/2018	n/a	cattle	WRLFMD	Israel	ME-SA/PanAsia-2/QOM-15
ISR/46/2018	n/a	cattle	WRLFMD	Israel	ME-SA/PanAsia-2/QOM-15
ISR/48/2018	n/a	cattle	WRLFMD	Israel	ME-SA/PanAsia-2/QOM-15
ISR/12/2018	n/a	cattle	WRLFMD	Israel	ME-SA/PanAsia-2/QOM-15
ISR/10/2018	n/a	cattle	WRLFMD	Israel	ME-SA/PanAsia-2/QOM-15
ISR/26/2018	n/a	cattle	WRLFMD	Israel	ME-SA/PanAsia-2/QOM-15
ISR/2/2018	n/a	cattle	WRLFMD	Israel	ME-SA/PanAsia-2/QOM-15
ISR/34/2018	n/a	cattle	WRLFMD	Israel	ME-SA/PanAsia-2/QOM-15
Gazit/317556-110/ISR/2018*	n/a	cattle	KVI	Israel	ME-SA/PanAsia-2/QOM-15
ISR/14/2018	n/a	gazelle	WRLFMD	Israel	ME-SA/PanAsia-2/QOM-15
ISR/33/2018	n/a	cattle	WRLFMD	Israel	ME-SA/PanAsia-2/QOM-15
ISR/4/2018	n/a	cattle	WRLFMD	Israel	ME-SA/PanAsia-2/QOM-15
ISR/15/2018	n/a	gazelle	WRLFMD	Israel	ME-SA/PanAsia-2/QOM-15
ISR/13/2018	n/a	gazelle	WRLFMD	Israel	ME-SA/PanAsia-2/QOM-15
ISR/1/2018	n/a	cattle	WRLFMD	Israel	ME-SA/PanAsia-2/QOM-15
ISR/3/2018	n/a	cattle	WRLFMD	Israel	ME-SA/PanAsia-2/QOM-15
ISR/20/2018	n/a	gazelle	WRLFMD	Israel	ME-SA/PanAsia-2/QOM-15
Gazit/317556-470/ISR/2018*	n/a	cattle	KVI	Israel	ME-SA/PanAsia-2/QOM-15
ISR/27/2018	n/a	cattle	WRLFMD	Israel	ME-SA/PanAsia-2/QOM-15
ISR/25/2018	n/a	cattle	WRLFMD	Israel	ME-SA/PanAsia-2/QOM-15
TUR/426/2018*	n/a	n/a	FMDI	Turkey	ME-SA/PanAsia-2/QOM-15
TUR/1/2018	n/a	cattle	WRLFMD	Turkey	ME-SA/PanAsia-2/QOM-15
TUR/5/2018	n/a	cattle	WRLFMD	Turkey	ME-SA/PanAsia-2/QOM-15

continued on next page

label	accession	host(s)	lab	country	taxonomic information
TUR/17/2017	n/a	cattle	WRLFMD	Turkey	ME-SA/PanAsia-2/QOM-15
TUR/12/2018	n/a	cattle	WRLFMD	Turkey	ME-SA/PanAsia-2/QOM-15
TUR/4/2017	n/a	cattle	WRLFMD	Turkey	ME-SA/PanAsia-2/QOM-15
TUR/2/2016	n/a	cattle	WRLFMD	Turkey	ME-SA/PanAsia-2/QOM-15
TUR/5/2017	n/a	cattle	WRLFMD	Turkey	ME-SA/PanAsia-2/QOM-15
IRN/17/2016	n/a	sheep	WRLFMD	Iran	ME-SA/PanAsia-2/QOM-15
TUR/8/2018	n/a	cattle	WRLFMD	Turkey	ME-SA/PanAsia-2/QOM-15
IRN/20/2018	n/a	sheep	WRLFMD	Iran	ME-SA/PanAsia-2/QOM-15
IRN/21/2018	n/a	cattle	WRLFMD	Iran	ME-SA/PanAsia-2/QOM-15
IRN/24/2018	n/a	cattle	WRLFMD	Iran	ME-SA/PanAsia-2/QOM-15
IRN/8/2018	n/a	sheep	WRLFMD	Iran	ME-SA/PanAsia-2/QOM-15
IRN/16/2018	n/a	cattle	WRLFMD	Iran	ME-SA/PanAsia-2/QOM-15
IRN/15/2018	n/a	sheep	WRLFMD	Iran	ME-SA/PanAsia-2/QOM-15
IRN/13/2018	n/a	cattle	WRLFMD	Iran	ME-SA/PanAsia-2/QOM-15
IRN/22/2018	n/a	cattle	WRLFMD	Iran	ME-SA/PanAsia-2/QOM-15
IRN/11/2018	n/a	cattle	WRLFMD	Iran	ME-SA/PanAsia-2/QOM-15
IRN/10/2016	n/a	sheep	WRLFMD	Iran	ME-SA/PanAsia-2/QOM-15
TUR/435/2018*	n/a	n/a	FMDI	Turkey	ME-SA/PanAsia-2/QOM-15
TUR/2/2017	n/a	cattle	WRLFMD	Turkey	ME-SA/PanAsia-2/QOM-15
IRN/29/2016	n/a	sheep	WRLFMD	Iran	ME-SA/PanAsia-2/QOM-15
IRN/27/2016	n/a	sheep	WRLFMD	Iran	ME-SA/PanAsia-2/QOM-15
KUW/2/2016	n/a	cattle	WRLFMD	Kuwait	ME-SA/PanAsia-2/QOM-15
IRN/16/2016	n/a	sheep	WRLFMD	Iran	ME-SA/PanAsia-2/QOM-15
IRN/28/2016	n/a	sheep	WRLFMD	Iran	ME-SA/PanAsia-2/QOM-15
IRN/9/2016	n/a	dog	WRLFMD	Iran	ME-SA/PanAsia-2/QOM-15
IRN/13/2016	n/a	cattle	WRLFMD	Iran	ME-SA/PanAsia-2/QOM-15
IRN/19/2016	n/a	sheep	WRLFMD	Iran	ME-SA/PanAsia-2/QOM-15
IRN/21/2016	n/a	cattle	WRLFMD	Iran	ME-SA/PanAsia-2/QOM-15
IRN/18/2016	n/a	sheep	WRLFMD	Iran	ME-SA/PanAsia-2/QOM-15
IRN/15/2016	n/a	sheep	WRLFMD	Iran	ME-SA/PanAsia-2/QOM-15
IRN/5/2016	n/a	n/a	WRLFMD	Iran	ME-SA/PanAsia-2/QOM-15
KUW/4/2016	n/a	cattle	WRLFMD	Kuwait	ME-SA/PanAsia-2/QOM-15
IRN/25/2016	n/a	cattle	WRLFMD	Iran	ME-SA/PanAsia-2/QOM-15
KUW/1/2016	n/a	cattle	WRLFMD	Kuwait	ME-SA/PanAsia-2/QOM-15
IRN/15/2015	n/a	cattle	WRLFMD	Iran	ME-SA/PanAsia-2/QOM-15
IRN/16/2015	n/a	cattle	WRLFMD	Iran	ME-SA/PanAsia-2/QOM-15
IRN/6/2015	n/a	cattle	WRLFMD	Iran	ME-SA/PanAsia-2/QOM-15
IRN/18/2010	KY091283	cattle	WRLFMD	Iran	ME-SA/PanAsia-2/BAL-09
NEP/1/2015	n/a	cattle	WRLFMD	Nepal	ME-SA/PanAsia-2/KAT-15
UKG/35/2001	AJ539141	porcine	PIADC	United Kingdom	ME-SA/PanAsia
IRN/8/2005	KY091281	ovine	WRLFMD	Iran	ME-SA/PanAsia-2
TUR/257/2008*	n/a	n/a	FMDI-Ankara	Turkey	ME-SA/PanAsia-2/TER-08
TUR/264/2009*	n/a	n/a	FMDI-Ankara	Turkey	ME-SA/PanAsia-2/SAN-09
PAK/16/2010	KY091285	cattle	WRLFMD	Pakistan	ME-SA/PanAsia-2/PUN-10
IRN/31/2009	KY091284	cattle	WRLFMD	Iran	ME-SA/PanAsia-2/FAR-09
IRN/88/2009	KY091282	n/a	WRLFMD	Iran	ME-SA/PanAsia-2/ANT-10
TAI/189/87*	KY091288	bovine	TRRL	Thailand	SEA
ISA/1/62	AJ303500	n/a	WRLFMD	Indonesia	ISA-1

*, not a WRLFMD Reference Number

n/a, not available