

# FAO World Reference Laboratory for Foot-and-Mouth Disease (WRLFMD)

## Genotyping Report

FMDV serotype: O  
Country: Saudi Arabia  
Year: 2018  
Batch: WRLFMD/2019/00011  
No. of sequences: 6  
Report date: 19th March 2019  
Report generated by: Nick Knowles  
Report checked by: Jemma Wadsworth



Copyright © 2019 The Pirbright Institute, Ash Road, Pirbright, Woking GU24 0NF, United Kingdom.

www: <http://www.wrlfmd.org/>

email: [reporting@pirbright.ac.uk](mailto:reporting@pirbright.ac.uk)

The contents of this report should not be reproduced without permission.

Virus sample name:	SAU/1/2018
Sender reference:	651
Location of origin:	Alhassa, Alhassa
Country of origin:	Saudi Arabia
Date of collection:	14/01/2018
Host species:	oryx
Serotype:	O
Topotype:	ME-SA
Lineage:	Ind-2001
Sublineage:	e
Sequence length:	633
Ambiguities:	0
Material submitted for sequencing:	BTy2
Harvest date of material:	12/03/2019
Primers:	FMD-3161F/FMD-4303R
Received for sequencing:	18/03/2019
Created:	19/03/2019
Last updated:	19/03/2019
VIBASys IDs: sample 40546, genome 40547, sequence viba_40548, sequencing info 40549	

#### Most Closely Related Sequences

sequence	virus name	Host	% Id.	# Ambig.	serotype	topotype	lineage	sublineage
viba_40556	SAU/8/2018	sheep	100.0	0	O	ME-SA	Ind-2001	e
viba_40552	SAU/2/2018	gazelle	100.0	0	O	ME-SA	Ind-2001	e
viba_23808	SAU/1/2016	cattle	98.9	0	O	ME-SA	Ind-2001	e
viba_23824	SAU/10/2016	bovine	98.7	0	O	ME-SA	Ind-2001	e
viba_25914	UAE/1/2015	gazelle	98.7	0	O	ME-SA	Ind-2001	e
viba_26244	SAU/19/2015	bovine	98.6	0	O	ME-SA	Ind-2001	e
viba_26248	SAU/20/2015	bovine	98.6	0	O	ME-SA	Ind-2001	e
viba_35914	JOR/1/2017	sheep	98.6	0	O	ME-SA	Ind-2001	e
viba_35878	SAU/17/2016	cattle	98.6	0	O	ME-SA	Ind-2001	e
viba_26240	SAU/18/2015	bovine	98.6	0	O	ME-SA	Ind-2001	e

#### Most Closely Related Prototype Sequences

see [http://www.wrlfmd.org/fmd\\_genotyping/prototypes.htm](http://www.wrlfmd.org/fmd_genotyping/prototypes.htm)

sequence	virus name	Host	% Id.	# Ambig.	serotype	topotype	lineage	sublineage
viba_30238	MUR/19/2016	cattle	97.6	0	O	ME-SA	Ind-2001	e
viba_293	BHU/3/2009	cattle	93.7	0	O	ME-SA	Ind-2001	d
viba_541	OMN/7/2001	bovine	92.0	0	O	ME-SA	Ind-2001	b
viba_705	KUW/3/97	bovine	90.7	0	O	ME-SA	Ind-2001	a
viba_397	UAE/4/2008	gazelle	89.8	0	O	ME-SA	Ind-2001	c
viba_285	UKG/35/2001	porcine	88.8	0	O	ME-SA	PanAsia	
viba_359	Manisa/TUR/69		88.5	0	O	ME-SA		
viba_650	IRN/8/2005	ovine	87.4	0	O	ME-SA	PanAsia-2	
viba_719	IRN/88/2009		87.3	0	O	ME-SA	PanAsia-2	ANT-10
viba_766	IRN/31/2009	cattle	87.3	0	O	ME-SA	PanAsia-2	FAR-09

Virus sample name:	SAU/2/2018
Sender reference:	665
Location of origin:	Riyadh, Riyadh
Country of origin:	Saudi Arabia
Date of collection:	23/01/2018
Host species:	gazelle
Serotype:	O
Topotype:	ME-SA
Lineage:	Ind-2001
Sublineage:	e
Sequence length:	633
Ambiguities:	0
Material submitted for sequencing:	BTy1
Harvest date of material:	08/03/2019
Primers:	FMD-3161F/FMD-4303R
Received for sequencing:	18/03/2019
Created:	19/03/2019
Last updated:	19/03/2019

VIBASys IDs: sample 40550, genome 40551, sequence viba\_40552, sequencing info 40553

#### Most Closely Related Sequences

sequence	virus name	Host	% Id.	# Ambig.	serotype	topotype	lineage	sublineage
viba_40556	SAU/8/2018	sheep	100.0	0	O	ME-SA	Ind-2001	e
viba_40548	SAU/1/2018	oryx	100.0	0	O	ME-SA	Ind-2001	e
viba_23808	SAU/1/2016	cattle	98.9	0	O	ME-SA	Ind-2001	e
viba_23824	SAU/10/2016	bovine	98.7	0	O	ME-SA	Ind-2001	e
viba_25914	UAE/1/2015	gazelle	98.7	0	O	ME-SA	Ind-2001	e
viba_26244	SAU/19/2015	bovine	98.6	0	O	ME-SA	Ind-2001	e
viba_26248	SAU/20/2015	bovine	98.6	0	O	ME-SA	Ind-2001	e
viba_35914	JOR/1/2017	sheep	98.6	0	O	ME-SA	Ind-2001	e
viba_35878	SAU/17/2016	cattle	98.6	0	O	ME-SA	Ind-2001	e
viba_26240	SAU/18/2015	bovine	98.6	0	O	ME-SA	Ind-2001	e

#### Most Closely Related Prototype Sequences

see [http://www.wrlfmd.org/fmd\\_genotyping/prototypes.htm](http://www.wrlfmd.org/fmd_genotyping/prototypes.htm)

sequence	virus name	Host	% Id.	# Ambig.	serotype	topotype	lineage	sublineage
viba_30238	MUR/19/2016	cattle	97.6	0	O	ME-SA	Ind-2001	e
viba_293	BHU/3/2009	cattle	93.7	0	O	ME-SA	Ind-2001	d
viba_541	OMN/7/2001	bovine	92.0	0	O	ME-SA	Ind-2001	b
viba_705	KUW/3/97	bovine	90.7	0	O	ME-SA	Ind-2001	a
viba_397	UAE/4/2008	gazelle	89.8	0	O	ME-SA	Ind-2001	c
viba_285	UKG/35/2001	porcine	88.8	0	O	ME-SA	PanAsia	
viba_359	Manisa/TUR/69		88.5	0	O	ME-SA		
viba_650	IRN/8/2005	ovine	87.4	0	O	ME-SA	PanAsia-2	
viba_719	IRN/88/2009		87.3	0	O	ME-SA	PanAsia-2	ANT-10
viba_766	IRN/31/2009	cattle	87.3	0	O	ME-SA	PanAsia-2	FAR-09

Virus sample name:	SAU/8/2018
Sender reference:	836
Location of origin:	Riyadh, Riyadh
Country of origin:	Saudi Arabia
Date of collection:	27/02/2018
Host species:	sheep
Serotype:	O
Topotype:	ME-SA
Lineage:	Ind-2001
Sublineage:	e
Sequence length:	633
Ambiguities:	0
Material submitted for sequencing:	BTy1
Harvest date of material:	08/03/2019
Primers:	FMD-3161F/FMD-4303R
Received for sequencing:	18/03/2019
Created:	19/03/2019
Last updated:	19/03/2019
VIBASys IDs: sample 40554, genome 40555, sequence viba_40556, sequencing info 40557	

#### Most Closely Related Sequences

sequence	virus name	Host	% Id.	# Ambig.	serotype	topotype	lineage	sublineage
viba_40548	SAU/1/2018	oryx	100.0	0	O	ME-SA	Ind-2001	e
viba_40552	SAU/2/2018	gazelle	100.0	0	O	ME-SA	Ind-2001	e
viba_23808	SAU/1/2016	cattle	98.9	0	O	ME-SA	Ind-2001	e
viba_23824	SAU/10/2016	bovine	98.7	0	O	ME-SA	Ind-2001	e
viba_25914	UAE/1/2015	gazelle	98.7	0	O	ME-SA	Ind-2001	e
viba_26244	SAU/19/2015	bovine	98.6	0	O	ME-SA	Ind-2001	e
viba_26248	SAU/20/2015	bovine	98.6	0	O	ME-SA	Ind-2001	e
viba_35914	JOR/1/2017	sheep	98.6	0	O	ME-SA	Ind-2001	e
viba_35878	SAU/17/2016	cattle	98.6	0	O	ME-SA	Ind-2001	e
viba_26240	SAU/18/2015	bovine	98.6	0	O	ME-SA	Ind-2001	e

#### Most Closely Related Prototype Sequences

see [http://www.wrlfmd.org/fmd\\_genotyping/prototypes.htm](http://www.wrlfmd.org/fmd_genotyping/prototypes.htm)

sequence	virus name	Host	% Id.	# Ambig.	serotype	topotype	lineage	sublineage
viba_30238	MUR/19/2016	cattle	97.6	0	O	ME-SA	Ind-2001	e
viba_293	BHU/3/2009	cattle	93.7	0	O	ME-SA	Ind-2001	d
viba_541	OMN/7/2001	bovine	92.0	0	O	ME-SA	Ind-2001	b
viba_705	KUW/3/97	bovine	90.7	0	O	ME-SA	Ind-2001	a
viba_397	UAE/4/2008	gazelle	89.8	0	O	ME-SA	Ind-2001	c
viba_285	UKG/35/2001	porcine	88.8	0	O	ME-SA	PanAsia	
viba_359	Manisa/TUR/69		88.5	0	O	ME-SA		
viba_650	IRN/8/2005	ovine	87.4	0	O	ME-SA	PanAsia-2	
viba_719	IRN/88/2009		87.3	0	O	ME-SA	PanAsia-2	ANT-10
viba_766	IRN/31/2009	cattle	87.3	0	O	ME-SA	PanAsia-2	FAR-09

Virus sample name:	SAU/9/2018
Sender reference:	A1
Location of origin:	Riyadh, Riyadh
Country of origin:	Saudi Arabia
Date of collection:	01/12/2018
Host species:	cattle
Serotype:	O
Topotype:	ME-SA
Lineage:	Ind-2001
Sublineage:	e
Sequence length:	633
Ambiguities:	0
Material submitted for sequencing:	BTy1
Harvest date of material:	08/03/2019
Primers:	FMD-3161F/FMD-4303R
Received for sequencing:	18/03/2019
Created:	19/03/2019
Last updated:	19/03/2019
VIBASys IDs: sample 40558, genome 40559, sequence viba_40560, sequencing info 40561	

#### Most Closely Related Sequences

sequence	virus name	Host	% Id.	# Ambig.	serotype	topotype	lineage	sublineage
viba_40568	SAU/11/2018	cattle	100.0	0	O	ME-SA	Ind-2001	e
viba_40564	SAU/10/2018	cattle	99.8	0	O	ME-SA	Ind-2001	e
viba_40556	SAU/8/2018	sheep	98.4	0	O	ME-SA	Ind-2001	e
viba_23824	SAU/10/2016	bovine	98.4	0	O	ME-SA	Ind-2001	e
viba_40548	SAU/1/2018	oryx	98.4	0	O	ME-SA	Ind-2001	e
viba_40552	SAU/2/2018	gazelle	98.4	0	O	ME-SA	Ind-2001	e
viba_35878	SAU/17/2016	cattle	98.3	0	O	ME-SA	Ind-2001	e
viba_23808	SAU/1/2016	cattle	98.3	0	O	ME-SA	Ind-2001	e
viba_25914	UAE/1/2015	gazelle	98.1	0	O	ME-SA	Ind-2001	e
viba_26244	SAU/19/2015	bovine	97.9	0	O	ME-SA	Ind-2001	e

#### Most Closely Related Prototype Sequences

see [http://www.wrlfmd.org/fmd\\_genotyping/prototypes.htm](http://www.wrlfmd.org/fmd_genotyping/prototypes.htm)

sequence	virus name	Host	% Id.	# Ambig.	serotype	topotype	lineage	sublineage
viba_30238	MUR/19/2016	cattle	97.3	0	O	ME-SA	Ind-2001	e
viba_293	BHU/3/2009	cattle	92.9	0	O	ME-SA	Ind-2001	d
viba_541	OMN/7/2001	bovine	91.8	0	O	ME-SA	Ind-2001	b
viba_705	KUW/3/97	bovine	90.3	0	O	ME-SA	Ind-2001	a
viba_397	UAE/4/2008	gazelle	89.6	0	O	ME-SA	Ind-2001	c
viba_359	Manisa/TUR/69		88.2	0	O	ME-SA		
viba_285	UKG/35/2001	porcine	87.7	0	O	ME-SA	PanAsia	
viba_650	IRN/8/2005	ovine	87.6	0	O	ME-SA	PanAsia-2	
viba_719	IRN/88/2009		87.5	0	O	ME-SA	PanAsia-2	ANT-10
viba_576	IND/R2/75		87.4	0	O	ME-SA		

Virus sample name:	SAU/10/2018
Sender reference:	A2
Location of origin:	Riyadh, Riyadh
Country of origin:	Saudi Arabia
Date of collection:	01/12/2018
Host species:	cattle
Serotype:	O
Topotype:	ME-SA
Lineage:	Ind-2001
Sublineage:	e
Sequence length:	633
Ambiguities:	0
Material submitted for sequencing:	BTy1
Harvest date of material:	12/03/2019
Primers:	FMD-3161F/FMD-4303R
Received for sequencing:	18/03/2019
Created:	19/03/2019
Last updated:	19/03/2019
VIBASys IDs: sample 40562, genome 40563, sequence viba_40564, sequencing info 40565	

#### Most Closely Related Sequences

sequence	virus name	Host	% Id.	# Ambig.	serotype	topotype	lineage	sublineage
viba_40560	SAU/9/2018	cattle	99.8	0	O	ME-SA	Ind-2001	e
viba_40568	SAU/11/2018	cattle	99.8	0	O	ME-SA	Ind-2001	e
viba_40556	SAU/8/2018	sheep	98.6	0	O	ME-SA	Ind-2001	e
viba_23824	SAU/10/2016	bovine	98.6	0	O	ME-SA	Ind-2001	e
viba_40548	SAU/1/2018	oryx	98.6	0	O	ME-SA	Ind-2001	e
viba_40552	SAU/2/2018	gazelle	98.6	0	O	ME-SA	Ind-2001	e
viba_35878	SAU/17/2016	cattle	98.4	0	O	ME-SA	Ind-2001	e
viba_23808	SAU/1/2016	cattle	98.4	0	O	ME-SA	Ind-2001	e
viba_25914	UAE/1/2015	gazelle	98.3	0	O	ME-SA	Ind-2001	e
viba_26244	SAU/19/2015	bovine	98.1	0	O	ME-SA	Ind-2001	e

#### Most Closely Related Prototype Sequences

see [http://www.wrlfmd.org/fmd\\_genotyping/prototypes.htm](http://www.wrlfmd.org/fmd_genotyping/prototypes.htm)

sequence	virus name	Host	% Id.	# Ambig.	serotype	topotype	lineage	sublineage
viba_30238	MUR/19/2016	cattle	97.5	0	O	ME-SA	Ind-2001	e
viba_293	BHU/3/2009	cattle	93.0	0	O	ME-SA	Ind-2001	d
viba_541	OMN/7/2001	bovine	92.0	0	O	ME-SA	Ind-2001	b
viba_705	KUW/3/97	bovine	90.4	0	O	ME-SA	Ind-2001	a
viba_397	UAE/4/2008	gazelle	89.8	0	O	ME-SA	Ind-2001	c
viba_359	Manisa/TUR/69		88.3	0	O	ME-SA		
viba_285	UKG/35/2001	porcine	87.9	0	O	ME-SA	PanAsia	
viba_650	IRN/8/2005	ovine	87.4	0	O	ME-SA	PanAsia-2	
viba_850	NEP/1/2015	cattle	87.4	1	O	ME-SA	PanAsia-2	KAT-15
viba_719	IRN/88/2009		87.3	0	O	ME-SA	PanAsia-2	ANT-10

Virus sample name:	SAU/11/2018
Sender reference:	A3
Location of origin:	Riyadh, Riyadh
Country of origin:	Saudi Arabia
Date of collection:	01/12/2018
Host species:	cattle
Serotype:	O
Topotype:	ME-SA
Lineage:	Ind-2001
Sublineage:	e
Sequence length:	633
Ambiguities:	0
Material submitted for sequencing:	BTy1
Harvest date of material:	12/03/2019
Primers:	FMD-3161F/FMD-4303R
Received for sequencing:	18/03/2019
Created:	19/03/2019
Last updated:	19/03/2019
VIBASys IDs: sample 40566, genome 40567, sequence viba_40568, sequencing info 40569	

#### Most Closely Related Sequences

sequence	virus name	Host	% Id.	# Ambig.	serotype	topotype	lineage	sublineage
viba_40560	SAU/9/2018	cattle	100.0	0	O	ME-SA	Ind-2001	e
viba_40564	SAU/10/2018	cattle	99.8	0	O	ME-SA	Ind-2001	e
viba_40556	SAU/8/2018	sheep	98.4	0	O	ME-SA	Ind-2001	e
viba_23824	SAU/10/2016	bovine	98.4	0	O	ME-SA	Ind-2001	e
viba_40548	SAU/1/2018	oryx	98.4	0	O	ME-SA	Ind-2001	e
viba_40552	SAU/2/2018	gazelle	98.4	0	O	ME-SA	Ind-2001	e
viba_35878	SAU/17/2016	cattle	98.3	0	O	ME-SA	Ind-2001	e
viba_23808	SAU/1/2016	cattle	98.3	0	O	ME-SA	Ind-2001	e
viba_25914	UAE/1/2015	gazelle	98.1	0	O	ME-SA	Ind-2001	e
viba_26244	SAU/19/2015	bovine	97.9	0	O	ME-SA	Ind-2001	e

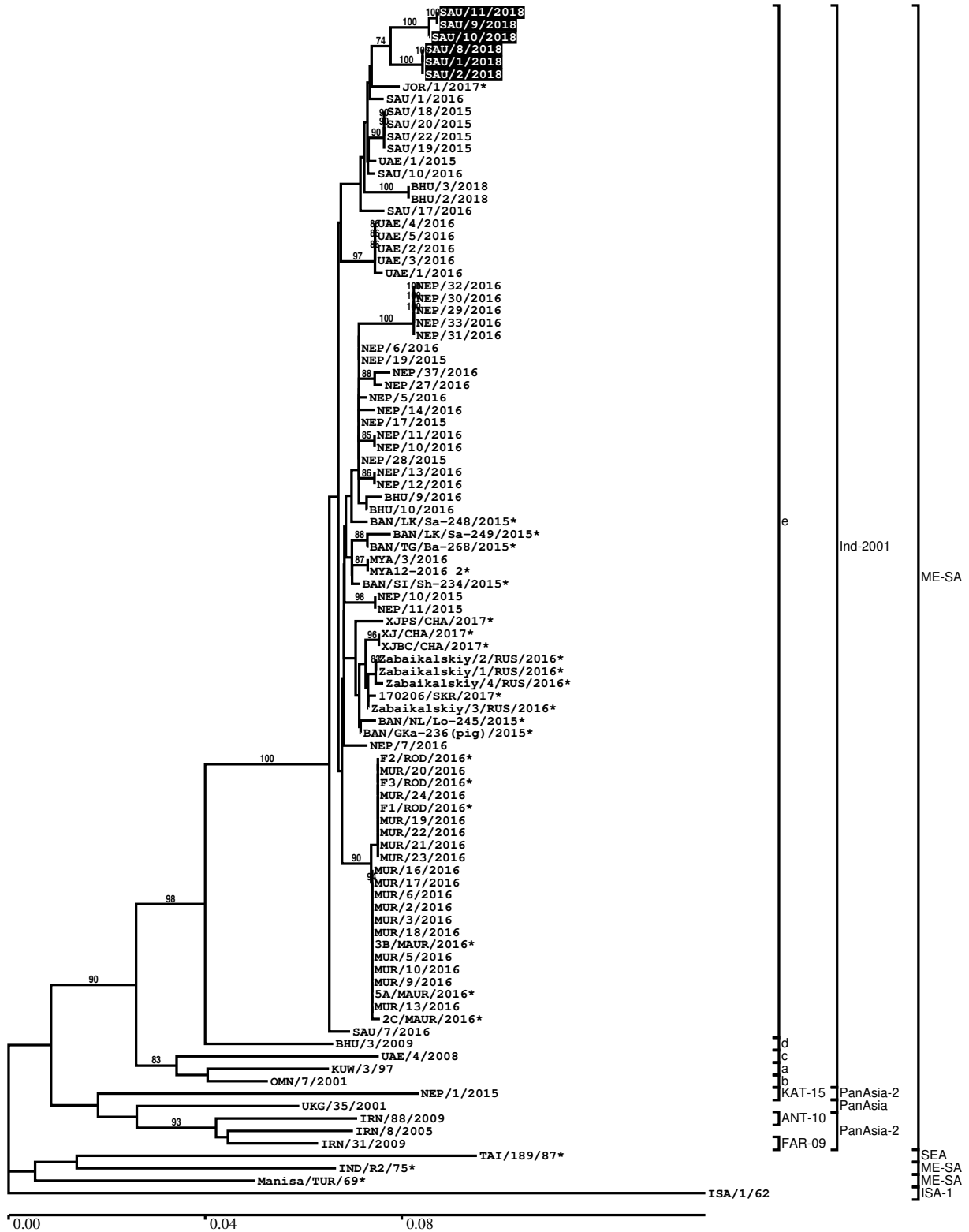
#### Most Closely Related Prototype Sequences

see [http://www.wrlfmd.org/fmd\\_genotyping/prototypes.htm](http://www.wrlfmd.org/fmd_genotyping/prototypes.htm)

sequence	virus name	Host	% Id.	# Ambig.	serotype	topotype	lineage	sublineage
viba_30238	MUR/19/2016	cattle	97.3	0	O	ME-SA	Ind-2001	e
viba_293	BHU/3/2009	cattle	92.9	0	O	ME-SA	Ind-2001	d
viba_541	OMN/7/2001	bovine	91.8	0	O	ME-SA	Ind-2001	b
viba_705	KUW/3/97	bovine	90.3	0	O	ME-SA	Ind-2001	a
viba_397	UAE/4/2008	gazelle	89.6	0	O	ME-SA	Ind-2001	c
viba_359	Manisa/TUR/69		88.2	0	O	ME-SA		
viba_285	UKG/35/2001	porcine	87.7	0	O	ME-SA	PanAsia	
viba_650	IRN/8/2005	ovine	87.6	0	O	ME-SA	PanAsia-2	
viba_719	IRN/88/2009		87.5	0	O	ME-SA	PanAsia-2	ANT-10
viba_576	IND/R2/75		87.4	0	O	ME-SA		

Report on FMDV O in Saudi Arabia in 2018

Batch: WRLFMD/2019/00011



\*, not a WRLFMD Reference Number



## Analysis Parameters

VP1 subsequence extractor:	vp1_O
Query sequence set:	WRLFMD/2019/00011-Saudi Arabia-O (6 sequences)
Sequence database set:	allseqs_O (4343 sequences)
Prototype sequence set:	!prototypes_O (49 sequences)
Number of related sequences reported:	10
Minimal VP1 subsequence match length	600
Sequence alignment method:	muscle (default parameters)
Sequence alignment length:	636
Phylogeny reconstruction method:	fdnadist, fneighbor
Number of bootstrap samples:	1000
Random seed for bootstrapping:	1
Displaying bootstrap values above:	70.0%
Number of sequences in tree capped at:	100
Number of prototype sequences in tree:	12
VIBASys version:	reflabs-1.1.2

## Sequences in the Phylogenetic Tree

All sequences in the tree are in taxonomic group FMDV/O

label	accession	host(s)	lab	country	taxonomic information
SAU/11/2018	n/a	cattle	WRLFMD	Saudi Arabia	ME-SA/Ind-2001/e
SAU/9/2018	n/a	cattle	WRLFMD	Saudi Arabia	ME-SA/Ind-2001/e
SAU/10/2018	n/a	cattle	WRLFMD	Saudi Arabia	ME-SA/Ind-2001/e
SAU/8/2018	n/a	sheep	WRLFMD	Saudi Arabia	ME-SA/Ind-2001/e
SAU/1/2018	n/a	oryx	WRLFMD	Saudi Arabia	ME-SA/Ind-2001/e
SAU/2/2018	n/a	gazelle	WRLFMD	Saudi Arabia	ME-SA/Ind-2001/e
JOR/1/2017*	MH053353	sheep	JUST	Jordan	ME-SA/Ind-2001/e
SAU/1/2016	MG972593	cattle	WRLFMD	Saudi Arabia	ME-SA/Ind-2001/e
SAU/18/2015	MG972589	bovine	WRLFMD	Saudi Arabia	ME-SA/Ind-2001/e
SAU/20/2015	MG972591	bovine	WRLFMD	Saudi Arabia	ME-SA/Ind-2001/e
SAU/22/2015	MG972592	bovine	WRLFMD	Saudi Arabia	ME-SA/Ind-2001/e
SAU/19/2015	MG972590	bovine	WRLFMD	Saudi Arabia	ME-SA/Ind-2001/e
UAE/1/2015	MG972605	gazelle	WRLFMD	United Arab Emirates	ME-SA/Ind-2001/e
SAU/10/2016	MG972597	bovine	WRLFMD	Saudi Arabia	ME-SA/Ind-2001/e
BHU/3/2018	n/a	cattle	WRLFMD	Bhutan	ME-SA/Ind-2001/e
BHU/2/2018	n/a	cattle	WRLFMD	Bhutan	ME-SA/Ind-2001/e
SAU/17/2016	MG972598	cattle	WRLFMD	Saudi Arabia	ME-SA/Ind-2001/e
UAE/4/2016	MG972609	cattle	WRLFMD	United Arab Emirates	ME-SA/Ind-2001/e
UAE/5/2016	MG972610	cattle	WRLFMD	United Arab Emirates	ME-SA/Ind-2001/e
UAE/2/2016	MG972607	cattle	WRLFMD	United Arab Emirates	ME-SA/Ind-2001/e
UAE/3/2016	MG972608	cattle	WRLFMD	United Arab Emirates	ME-SA/Ind-2001/e
UAE/1/2016	MG972606	cattle	WRLFMD	United Arab Emirates	ME-SA/Ind-2001/e
NEP/32/2016	MG972574	cattle	WRLFMD	Nepal	ME-SA/Ind-2001/e
NEP/30/2016	MG972572	cattle	WRLFMD	Nepal	ME-SA/Ind-2001/e
NEP/29/2016	MG972571	cattle	WRLFMD	Nepal	ME-SA/Ind-2001/e
NEP/33/2016	MG972575	cattle	WRLFMD	Nepal	ME-SA/Ind-2001/e
NEP/31/2016	MG972573	cattle	WRLFMD	Nepal	ME-SA/Ind-2001/e
NEP/6/2016	KY449054	cattle	WRLFMD	Nepal	ME-SA/Ind-2001/e
NEP/19/2015	KY449051	cattle	WRLFMD	Nepal	ME-SA/Ind-2001/e
NEP/37/2016	MG972579	cattle	WRLFMD	Nepal	ME-SA/Ind-2001/e
NEP/27/2016	MG972569	cattle	WRLFMD	Nepal	ME-SA/Ind-2001/e

*continued on next page*

label	accession	host(s)	lab	country	taxonomic information
NEP/5/2016	KY449053	cattle	WRLFMD	Nepal	ME-SA/Ind-2001/e
NEP/14/2016	MG972562	water buffalo	WRLFMD	Nepal	ME-SA/Ind-2001/e
NEP/17/2015	KY449050	cattle	WRLFMD	Nepal	ME-SA/Ind-2001/e
NEP/11/2016	MG972559	goat	WRLFMD	Nepal	ME-SA/Ind-2001/e
NEP/10/2016	MG972558	goat	WRLFMD	Nepal	ME-SA/Ind-2001/e
NEP/28/2015	KY449052	cattle	WRLFMD	Nepal	ME-SA/Ind-2001/e
NEP/13/2016	MG972561	cattle	WRLFMD	Nepal	ME-SA/Ind-2001/e
NEP/12/2016	MG972560	cattle	WRLFMD	Nepal	ME-SA/Ind-2001/e
BHU/9/2016	MG972483	cattle	WRLFMD	Bhutan	ME-SA/Ind-2001/e
BHU/10/2016	MG972484	cattle	WRLFMD	Bhutan	ME-SA/Ind-2001/e
BAN/LK/Sa-248/2015*	KY077612	cattle	Univ Dhaka	Bangladesh	ME-SA/Ind-2001/e
BAN/LK/Sa-249/2015*	KY077613	cattle	Univ Dhaka	Bangladesh	ME-SA/Ind-2001/e
BAN/TG/Ba-268/2015*	KY077621	cattle	Univ Dhaka	Bangladesh	ME-SA/Ind-2001/e
MYA/3/2016	MG972516	cattle	WRLFMD	Myanmar	ME-SA/Ind-2001/e
MYA12-2016 2*	n/a	n/a	TRRL	Myanmar	ME-SA/Ind-2001/e
BAN/SI/Sh-234/2015*	KY077610	cattle	Univ Dhaka	Bangladesh	ME-SA/Ind-2001/e
NEP/10/2015	MG972543	cattle	WRLFMD	Nepal	ME-SA/Ind-2001/e
NEP/11/2015	MG972544	cattle	WRLFMD	Nepal	ME-SA/Ind-2001/e
XJPS/CHA/2017*	KY696707	n/a	LVRI	China	ME-SA/Ind-2001/e
XJ/CHA/2017*	MF461724	cattle	LVRI	China	ME-SA/Ind-2001/e
XJBC/CHA/2017*	KY696708	n/a	LVRI	China	ME-SA/Ind-2001/e
Zabaikalskiy/2/RUS/2016*	MG972583	cattle	ARRIAH	Russia	ME-SA/Ind-2001/e
Zabaikalskiy/1/RUS/2016*	MG983720	cattle	ARRIAH	Russia	ME-SA/Ind-2001/e
Zabaikalskiy/4/RUS/2016*	MG972585	cattle	ARRIAH	Russia	ME-SA/Ind-2001/e
170206/SKR/2017*	n/a	cattle	QIA	Republic of Korea (South Korea)	ME-SA/Ind-2001/e
Zabaikalskiy/3/RUS/2016*	MG972584	cattle	ARRIAH	Russia	ME-SA/Ind-2001/e
BAN/NL/Lo-245/2015*	KY077611	cattle	Univ Dhaka	Bangladesh	ME-SA/Ind-2001/e
BAN/GKa-236(pig)/2015*	KX712091	porcine	Univ Dhaka	Bangladesh	ME-SA/Ind-2001/e
NEP/7/2016	KY449055	cattle	WRLFMD	Nepal	ME-SA/Ind-2001/e
F2/ROD/2016*	n/a	bovine	ANSES	Mauritius	ME-SA/Ind-2001/e
MUR/20/2016	MG972511	cattle	WRLFMD	Mauritius	ME-SA/Ind-2001/e
F3/ROD/2016*	n/a	bovine	ANSES	Mauritius	ME-SA/Ind-2001/e
MUR/24/2016	MG972515	cattle	WRLFMD	Mauritius	ME-SA/Ind-2001/e
F1/ROD/2016*	n/a	bovine	ANSES	Mauritius	ME-SA/Ind-2001/e
MUR/19/2016	MG972510	cattle	WRLFMD	Mauritius	ME-SA/Ind-2001/e
MUR/22/2016	MG972513	cattle	WRLFMD	Mauritius	ME-SA/Ind-2001/e
MUR/21/2016	MG972512	cattle	WRLFMD	Mauritius	ME-SA/Ind-2001/e
MUR/23/2016	MG972514	cattle	WRLFMD	Mauritius	ME-SA/Ind-2001/e
MUR/16/2016	MG972507	cattle	WRLFMD	Mauritius	ME-SA/Ind-2001/e
MUR/17/2016	MG972508	cattle	WRLFMD	Mauritius	ME-SA/Ind-2001/e
MUR/6/2016	MG972498	cattle	WRLFMD	Mauritius	ME-SA/Ind-2001/e
MUR/2/2016	MG972494	cattle	WRLFMD	Mauritius	ME-SA/Ind-2001/e
MUR/3/2016	MG972495	cattle	WRLFMD	Mauritius	ME-SA/Ind-2001/e
MUR/18/2016	MG972509	cattle	WRLFMD	Mauritius	ME-SA/Ind-2001/e
3B/MAUR/2016*	n/a	bovine	ANSES	Mauritius	ME-SA/Ind-2001/e
MUR/5/2016	MG972497	cattle	WRLFMD	Mauritius	ME-SA/Ind-2001/e
MUR/10/2016	MG972502	cattle	WRLFMD	Mauritius	ME-SA/Ind-2001/e
MUR/9/2016	MG972501	cattle	WRLFMD	Mauritius	ME-SA/Ind-2001/e
5A/MAUR/2016*	n/a	bovine	ANSES	Mauritius	ME-SA/Ind-2001/e
MUR/13/2016	MG972504	cattle	WRLFMD	Mauritius	ME-SA/Ind-2001/e
2C/MAUR/2016*	n/a	bovine	ANSES	Mauritius	ME-SA/Ind-2001/e
SAU/7/2016	MG972596	bovine	WRLFMD	Saudi Arabia	ME-SA/Ind-2001/e
BHU/3/2009	KM921814	cattle	WRLFMD	Bhutan	ME-SA/Ind-2001/d
UAE/4/2008	KM921876	gazelle	WRLFMD	United Arab Emirates	ME-SA/Ind-2001/c
KUW/3/97	DQ164904	bovine	WRLFMD	Kuwait	ME-SA/Ind-2001/a
OMN/7/2001	DQ164941	bovine	WRLFMD	Oman	ME-SA/Ind-2001/b
NEP/1/2015	n/a	cattle	WRLFMD	Nepal	ME-SA/PanAsia-2/KAT-15
UKG/35/2001	AJ539141	porcine	PIADC	United Kingdom	ME-SA/PanAsia
IRN/88/2009	KY091282	n/a	WRLFMD	Iran	ME-SA/PanAsia-2/ANT-10
IRN/8/2005	KY091281	ovine	WRLFMD	Iran	ME-SA/PanAsia-2
IRN/31/2009	KY091284	cattle	WRLFMD	Iran	ME-SA/PanAsia-2/FAR-09
TAI/189/87*	KY091288	bovine	TRRL	Thailand	SEA
IND/R2/75*	AF204276	n/a	PD-FMD	India	ME-SA

continued on next page

---

<b>label</b>	<b>accession</b>	<b>host(s)</b>	<b>lab</b>	<b>country</b>	<b>taxonomic information</b>
Manisa/TUR/69*	<a href="#">AY593823</a>	n/a	PIADC	Turkey	ME-SA
ISA/1/62	<a href="#">AJ303500</a>	n/a	WRLFMD	Indonesia	ISA-1

\*, not a WRLFMD Reference Number

n/a, not available